

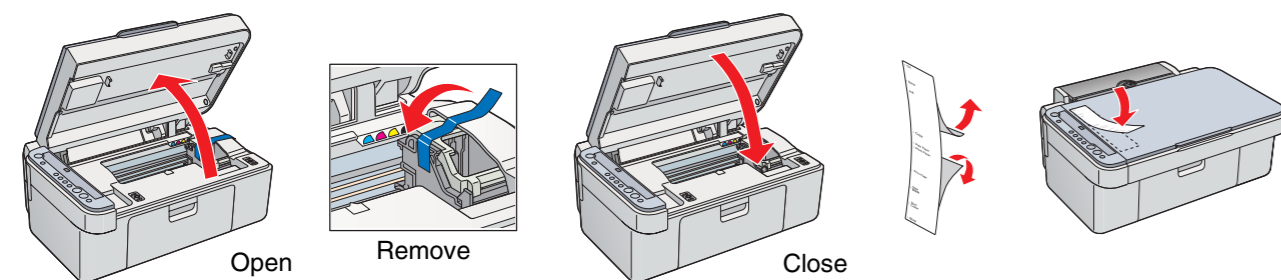
# Setup Guide

4049840-00  
XXXX  
English

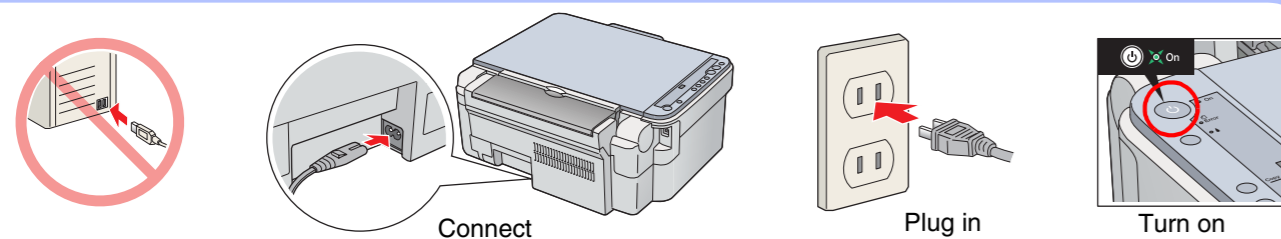
## 1. Unpacking



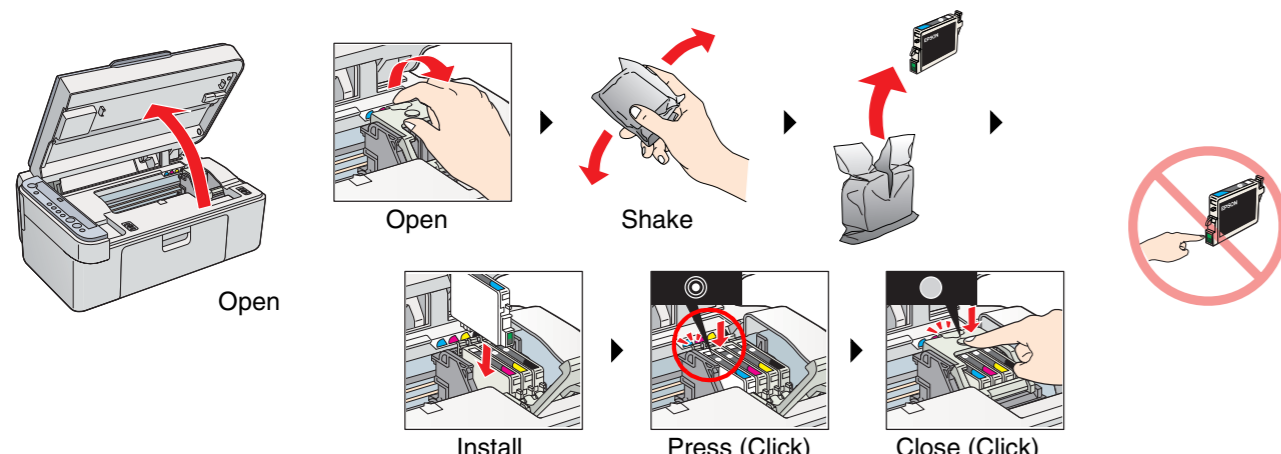
## 2. Removing Protective Materials and Affix a Panel Sticker



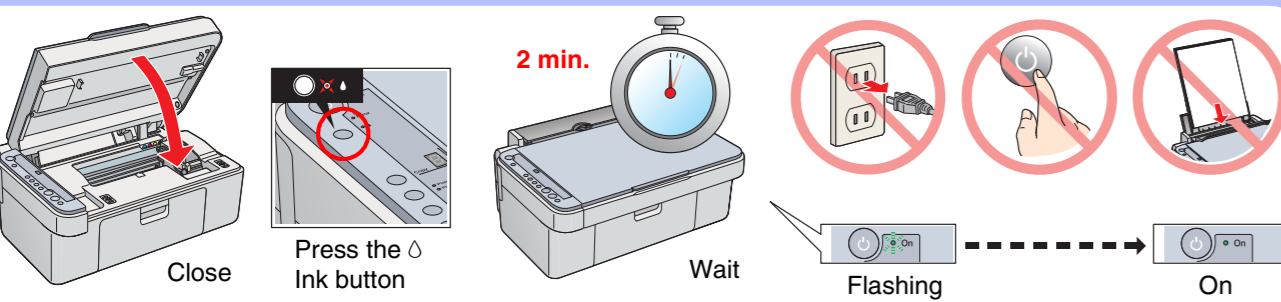
## 3. Turning On



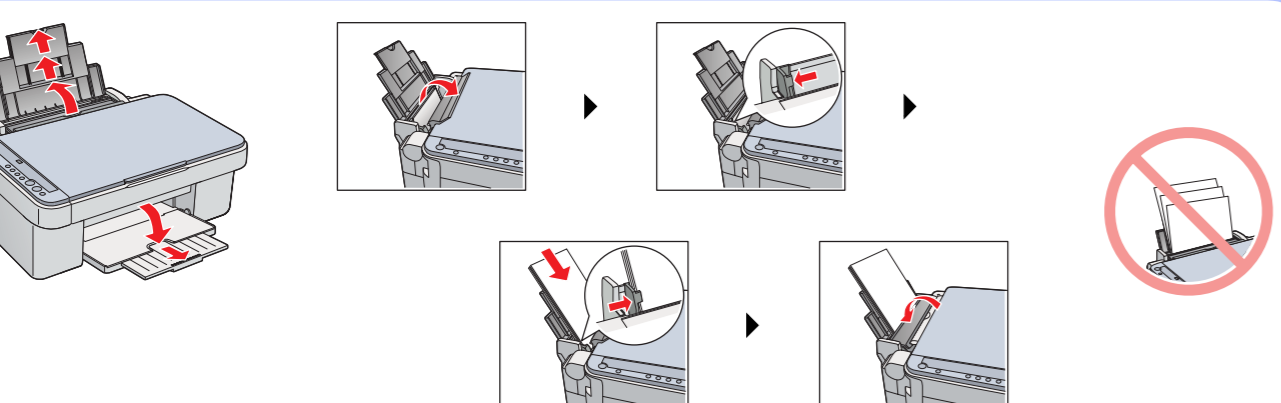
## 4. Installing Ink Cartridges



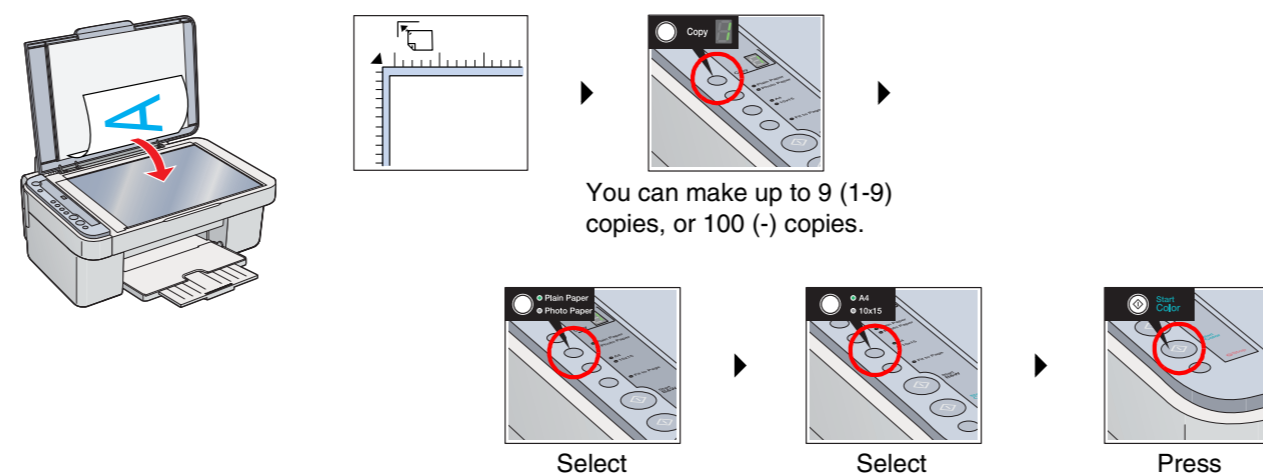
## 5. Ink Charging



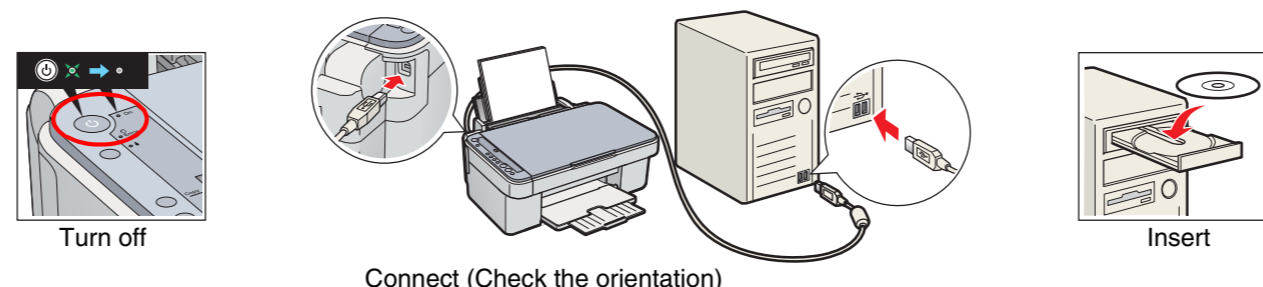
## 6. Loading Paper



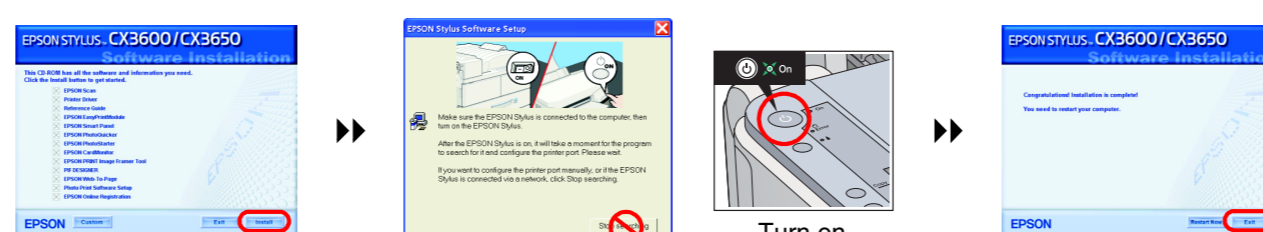
## 7. Making Copies



## 8. Connecting to a Computer and Installing the Software

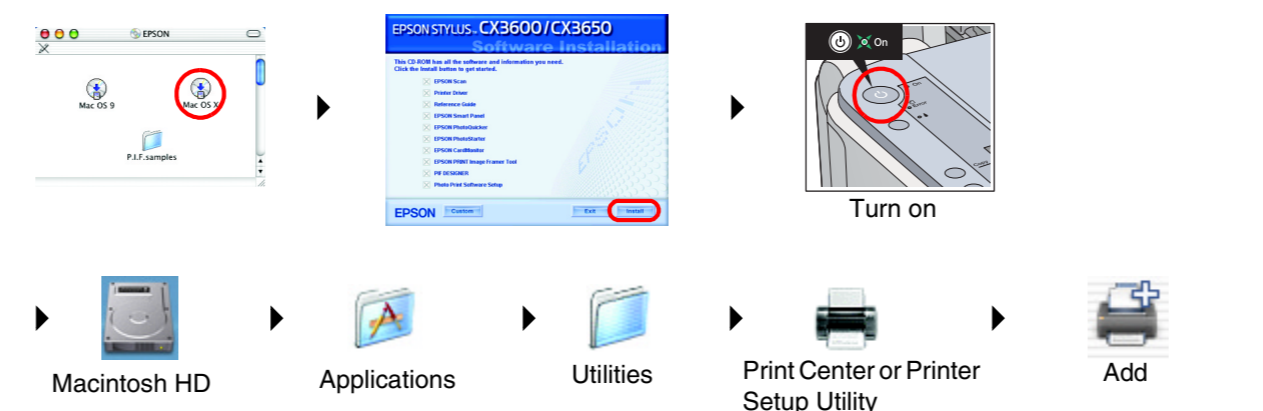


### For Windows

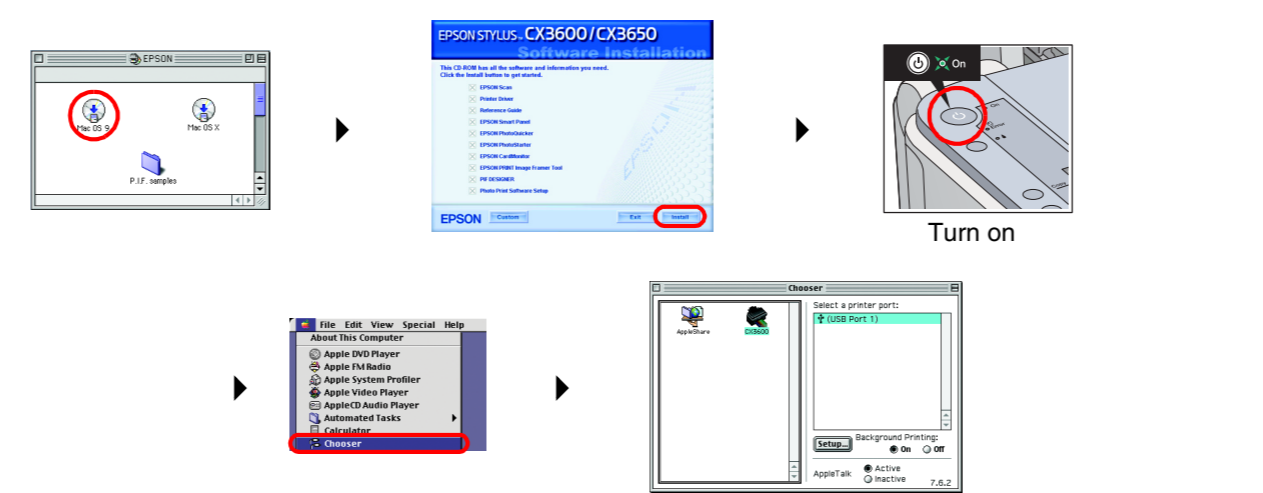


- ❑ If the installer dialog box does not appear, double-click CD-ROM icon.
- ❑ A screen appears after installation has been completed successfully. Restart your computer to start using this product from your computer.

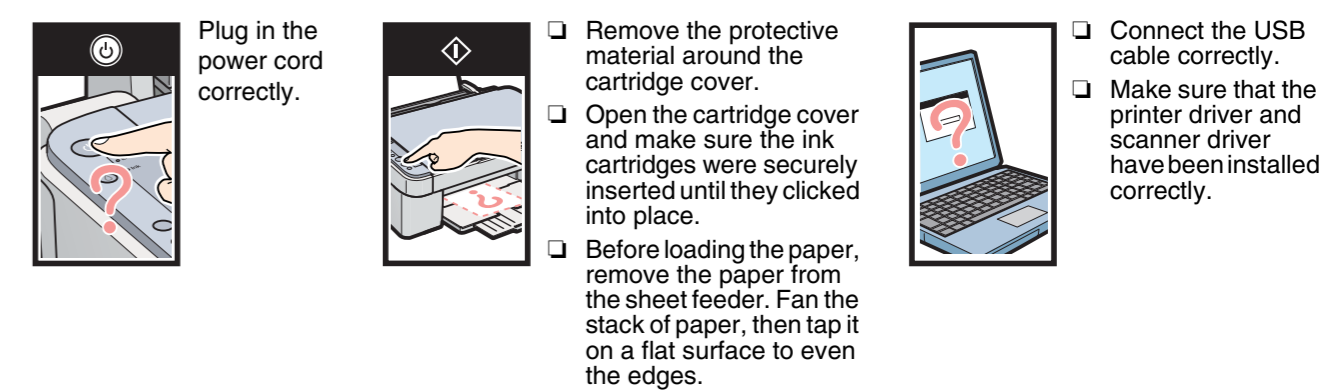
### For Mac OS X



### For Mac OS 9



## Troubleshooting

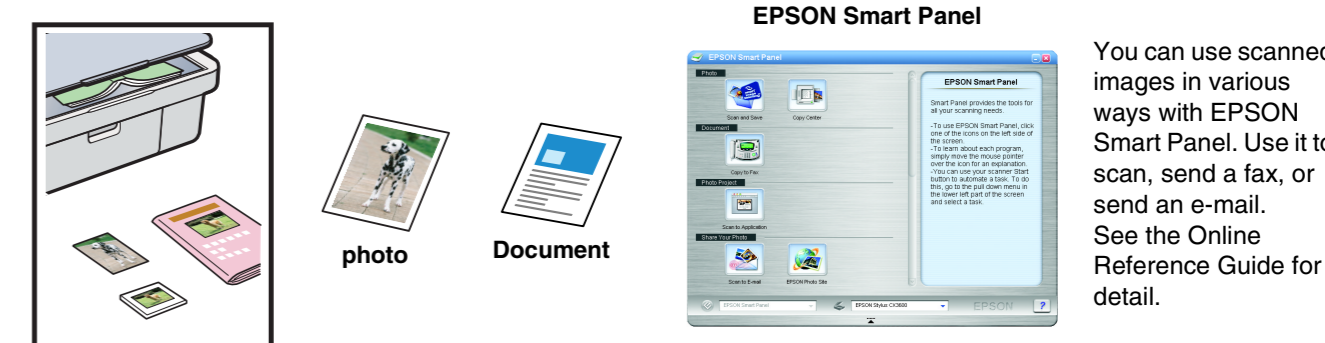


## Features

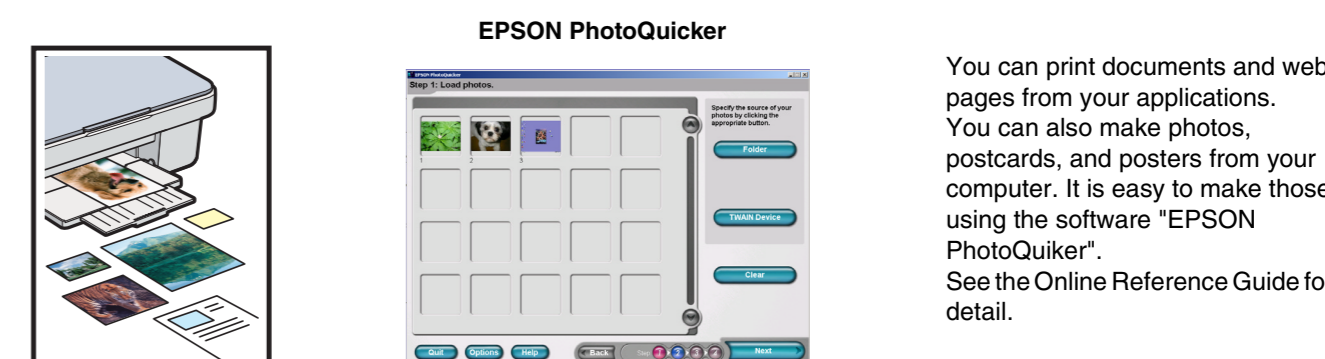
### Copying



### Scanning



### Printing



## Getting More Information

<b>Basic Operation Guide</b>	Describes the basic procedures for copying, printing, scanning and other information.
<b>Online Reference Guide</b>	Describes how to print and scan in detail. Maintenance and troubleshooting tips, in addition to technical and customer support information are also included. Double-click the ESCX3600 Reference Guide icon on the desktop.