

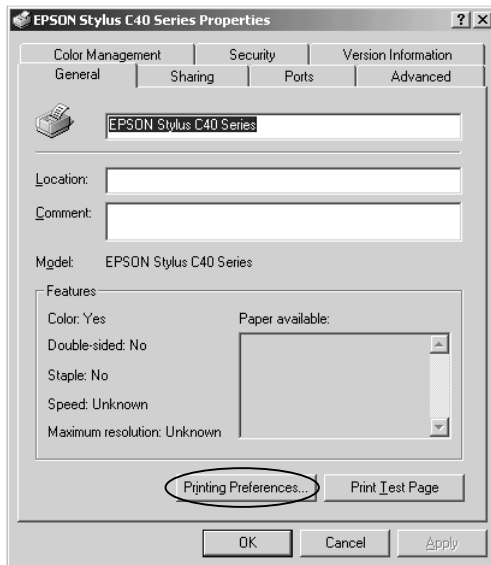
Read this sheet if you intend to use Windows 2000, the Robbie Williams CD or Windows XP

Note: Screen images for the the EPSON Stylus C40 series printer have been used in this document. You will see the model name of your printer.

Windows 2000 Users

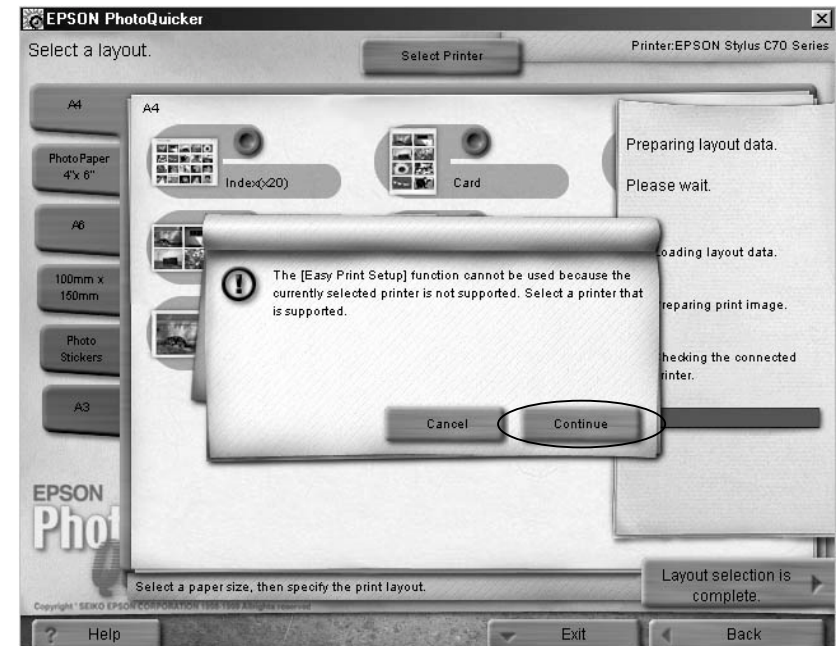
When you check the print head nozzles as described in the Setup sheet, step 2 is different:

2. Select the icon for your printer, click **Properties** on the File menu, **click Printing Preferences** on the Properties dialog box, then click the **Utility** tab.



Robbie Williams CD Users

After clicking on the button titled 'Layout selection is complete', the following screen will appear. This is normal. Please click Continue to proceed.



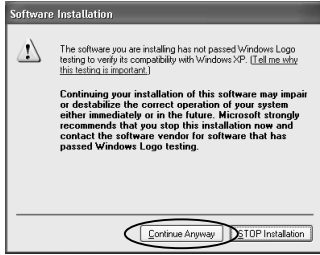

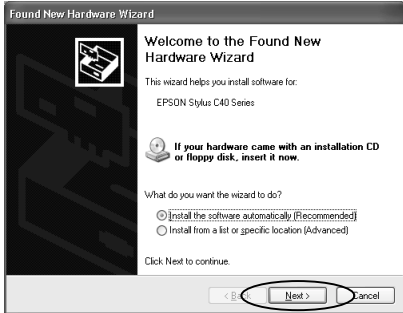
You can request an updated CD by calling EPSON on 08702 416900.

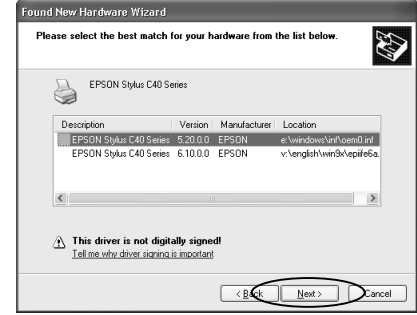
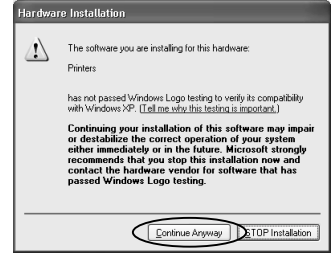

Windows XP Users

Install the printer driver by following the instructions for Windows 2000 in your Setup sheet and see the additional notes below.

Notes:

- ❑ In addition to the EPSON printer driver, the Microsoft printer driver may also be installed. EPSON recommends using the EPSON printer driver.
- ❑ Even if you are installing the latest version of the printer driver, the screens below may appear. If this occurs, follow the instructions below to finish installing the driver.

Action	Screen
Click Continue Anyway.	
Turn the printer on.	
Click Next. It is not necessary to insert an installation CD or floppy disk.	

Action	Screen
If an installation CD is already inserted in the CD-ROM drive, this screen will appear. Click Next. It is not necessary to change the selected printer driver.	
Click Continue Anyway.	
Click Finish.	

- ❑ You can access the printer software, Head Cleaning Utility and Print Head Alignment Utility from most Windows applications and from the Start Menu. They cannot be accessed from the task bar or from Problem Solver in Windows XP.
- ❑ Your computer should meet the minimum or recommended requirements for Windows XP. In addition to these system and memory requirements, you also need 50 MB of free hard disk space to install your printer software. To print, you need free hard disk space amounting to about double the size of the file you want to print.