

Vejledning i papirstop



Advarsler! Skal følges omhyggeligt for at undgå personskade.

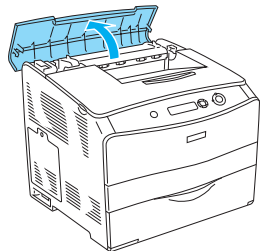
Bemærkninger Indeholder vigtige oplysninger og nyttige tip om betjeningen af printerens.

Hvis LCD-panelet viser fejlmeddelelsen Jam WWWW, skal du vælge den relevante beskrivelse for at fjerne det fastsiddende papir.

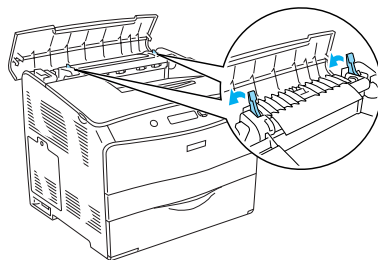
Yderligere oplysninger findes i brugervejledningen, som findes online.

Papirstop C (afdækning C)

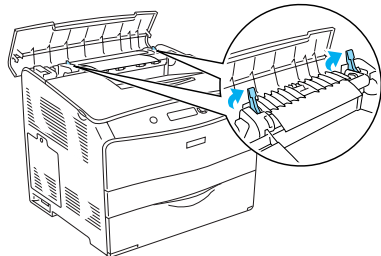
1



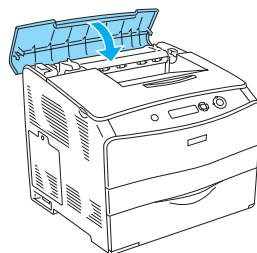
4



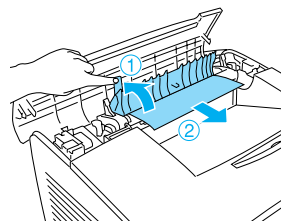
2



5



3

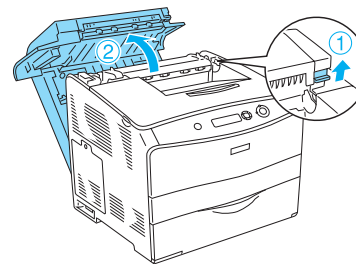


Advarsel!

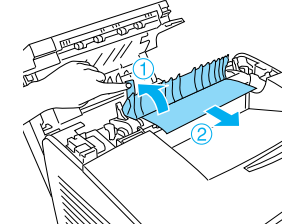
Undgå omhyggeligt at berøre fikseringsenheden, som er mærket CAUTION HIGH TEMPERATURE (FORSIGTIG, HØJ TEMPERATUR) eller de omkringliggende områder. Hvis printerens har været i brug, kan fikseringsenheden og de omgivende områder være meget varme.

Papirstop D (afdækning D)

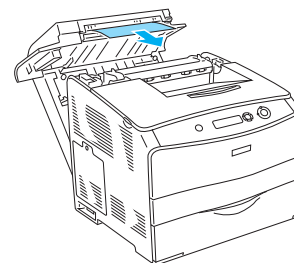
1



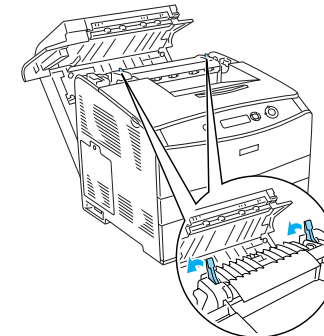
4



2



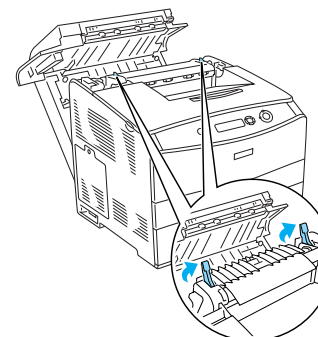
5



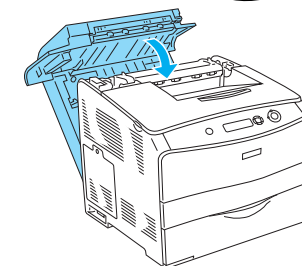
Bemærk:

Hvis du ikke kan se fastklemmt papir, skal du fortsætte til næste trin.

3

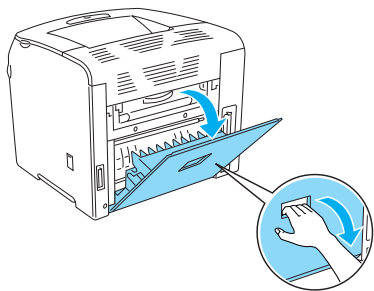


6



Papirstop E (afdækning E)

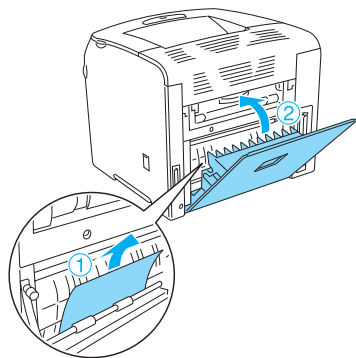
1



Bemærk:

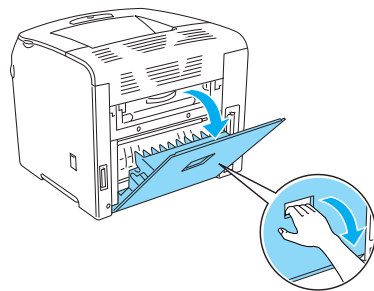
Hvis dupleksenheden (ekstra tilbehør) er monteret, skal afdækning D åbnes først.

2



Papirstop F (afdækning F)

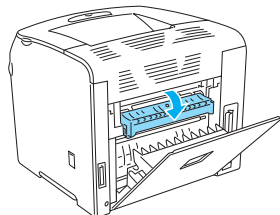
1



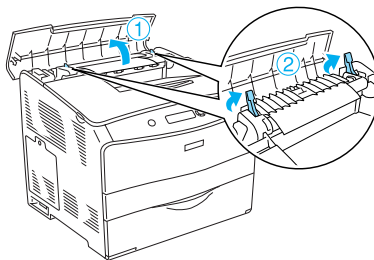
Bemærk:

Hvis dupleksenheden (ekstra tilbehør) er monteret, skal afdækning D åbnes først.

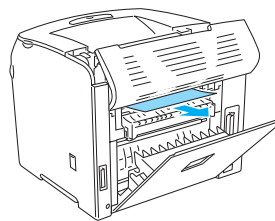
2



3



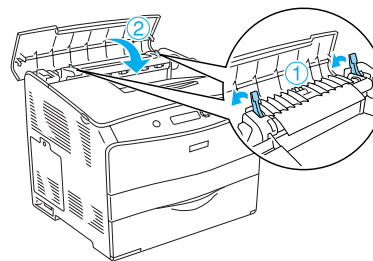
4



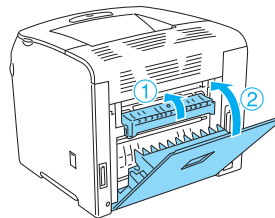
Bemærk:

Hvis det er vanskeligt at se det fastklebte papir, sidder papiret inden i printeren. I dette tilfælde skal du forsigtigt trække i papiret, til det når positionen vist ovenfor og derefter langsomt trække papiret ud.

5



6

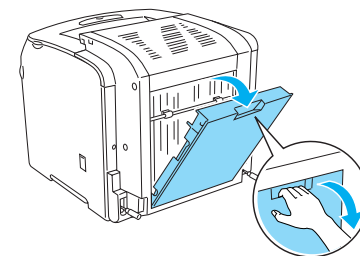


Bemærk:

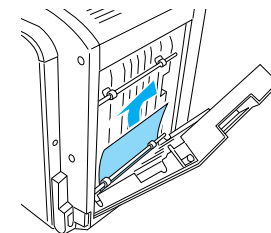
Hvis dupleksenheden (ekstra tilbehør) er monteret, skal afdækning D lukkes til sidst.

Papirstop DM (afdækning DM)

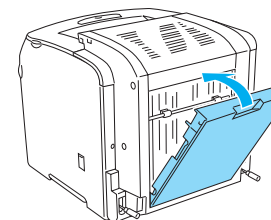
1



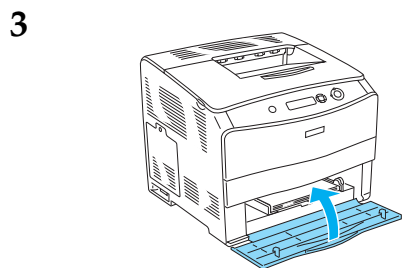
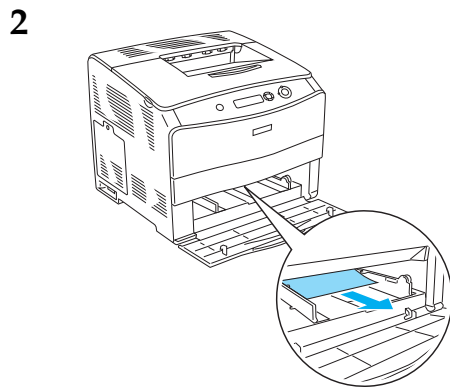
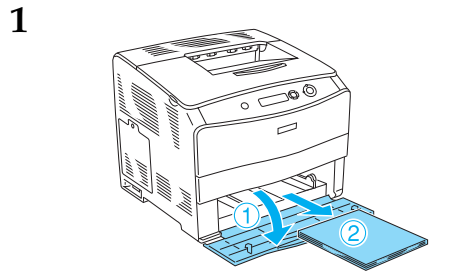
2



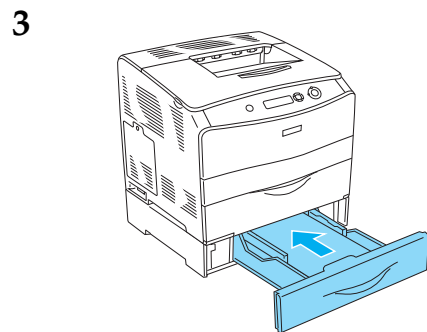
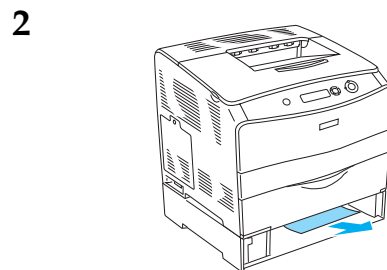
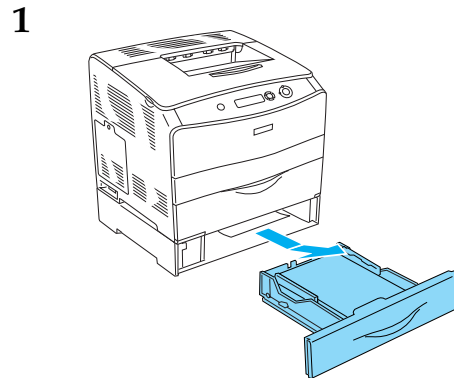
3



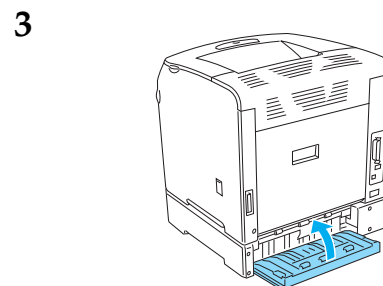
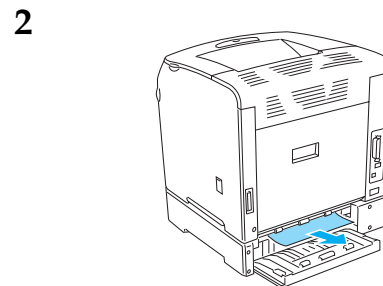
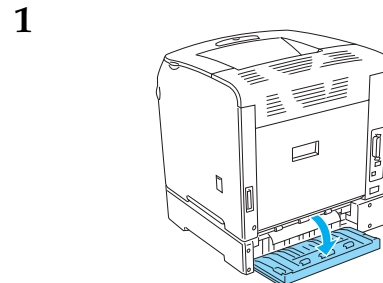
**Papirstop MP
(MP-bakken)**



**Papirstop LC
(paperkassette)**



**Papirstop G
(afdækning G)**



**Hvis transparente sidder
fast ved MP-bakken**

