

Stampante laser a colori

EPSON AcuLaser™ C1100 series

Guida per inceppamenti



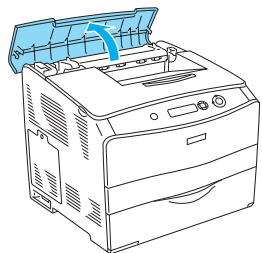
Avvisi Le informazioni contenute negli Avvisi devono essere seguite attentamente per evitare danni fisici.

Note Le note contengono importanti informazioni e utili consigli sull'utilizzo della stampante.

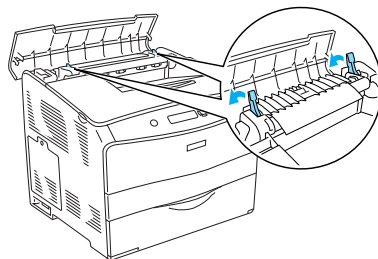
Quando sul pannello LCD viene visualizzato il messaggio di errore Jam WWWW (INC. WWWW), scegliere la descrizione appropriata per rimuovere la carta inceppata. Per ulteriori informazioni, vedere la Guida di riferimento in linea.

Inceppamento C (coperchio C)

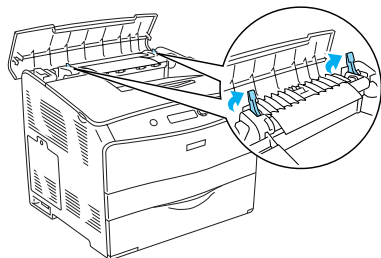
1



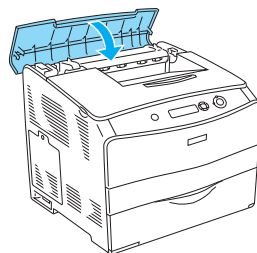
4



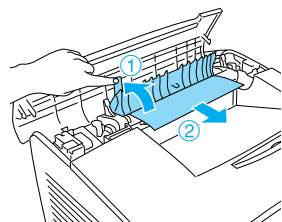
2



5



3

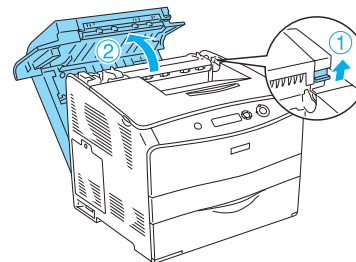


Avviso

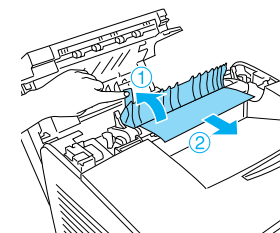
Fare attenzione a non toccare né il fusore, contrassegnato dall'etichetta ATTENZIONE - SUPERFICIE A TEMPERATURA ELEVATA, né le aree circostanti. Se la stampante è in funzione da un certo periodo di tempo, il fusore e queste aree possono raggiungere temperature molto elevate.

Inceppamento D (coperchio D)

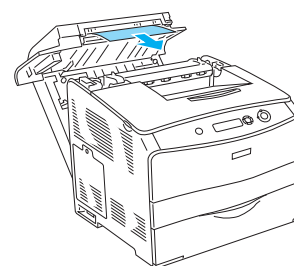
1



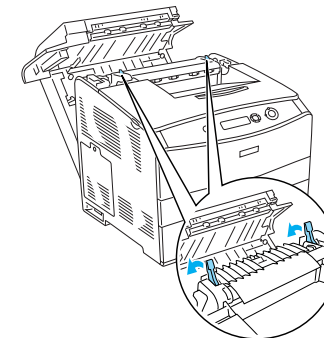
4



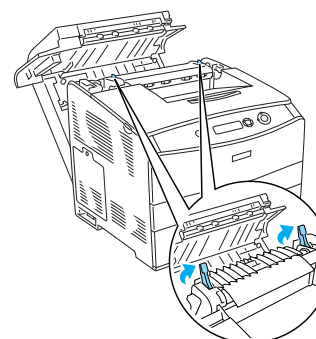
2



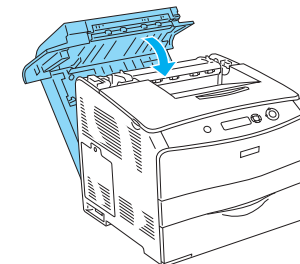
5



3



6



Nota

Quando non risulta possibile individuare la carta inceppata, procedere al punto successivo.

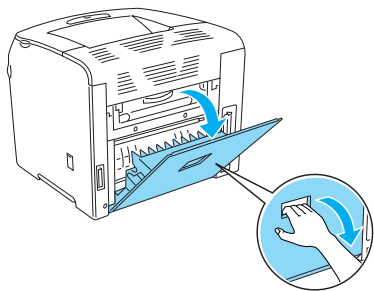


Avviso

Fare attenzione a non toccare né il fusore, contrassegnato dall'etichetta ATTENZIONE - SUPERFICIE A TEMPERATURA ELEVATA, né le aree circostanti. Se la stampante è in funzione da un certo periodo di tempo, il fusore e queste aree possono raggiungere temperature molto elevate.

Inceppamento E (coperchio E)

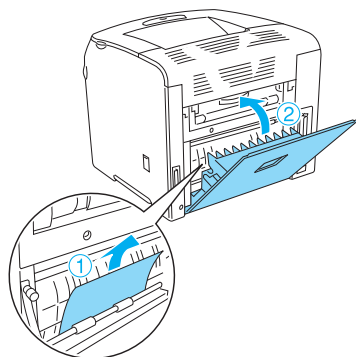
1



Nota

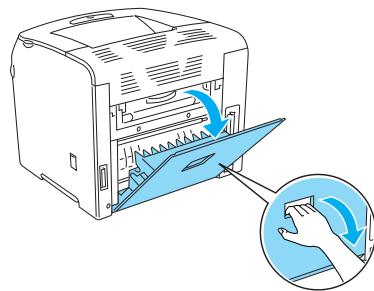
Quando è installata l'unità fronte/retro opzionale, aprire innanzitutto il coperchio D.

2



Inceppamento F (coperchio F)

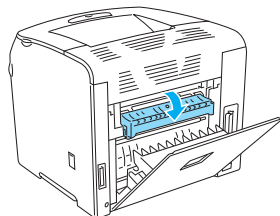
1



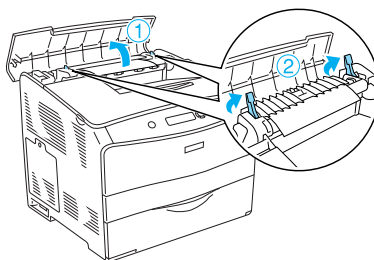
Nota

Quando è installata l'unità fronte/retro opzionale, aprire innanzitutto il coperchio D.

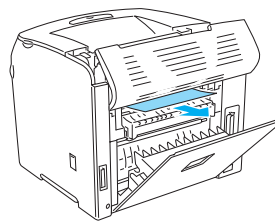
2



3



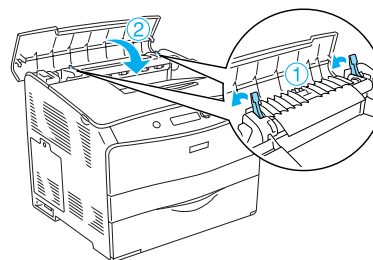
4



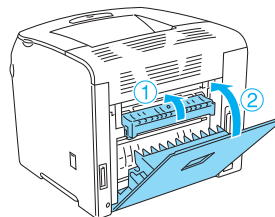
Nota

Quando la carta inceppata non è visibile, l'inceppamento si è verificato all'interno della stampante. In tal caso, tirare delicatamente la carta fino alla posizione illustrata sopra, quindi estrarla lentamente.

5



6

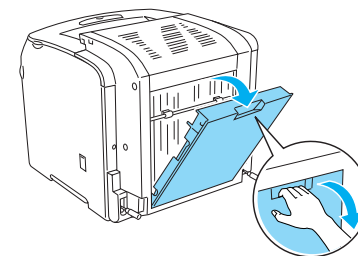


Nota

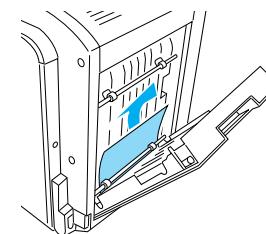
Quando è installata l'unità fronte/retro opzionale, chiudere per ultimo il coperchio D.

Inceppamento DM (coperchio DM)

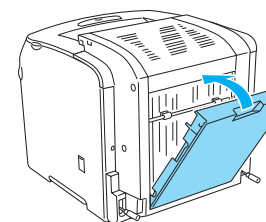
1



2

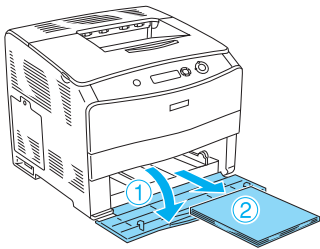


3

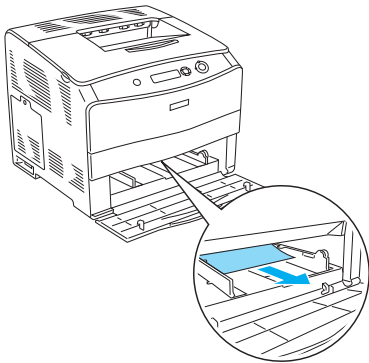


Inceppamento MF (cassetto MF)

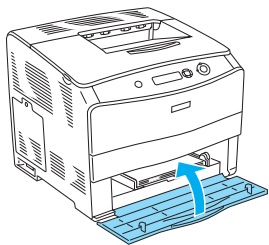
1



2

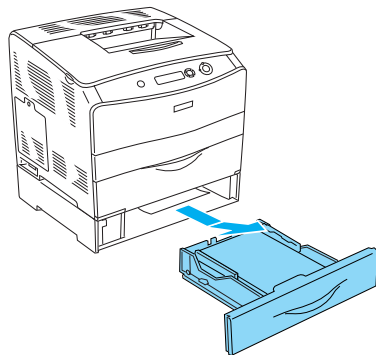


3

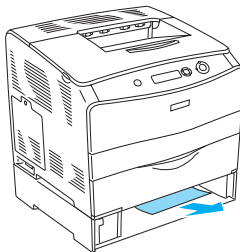


Inceppamento LC (cassetto carta inferiore)

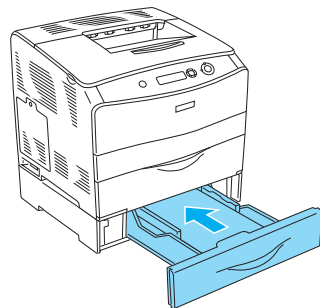
1



2

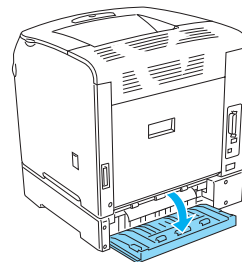


3

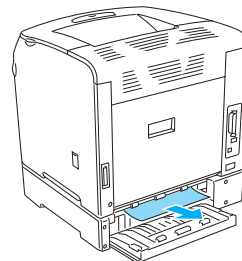


Inceppamento G (coperchio G)

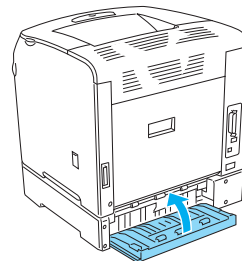
1



2

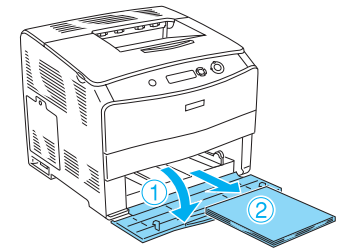


3

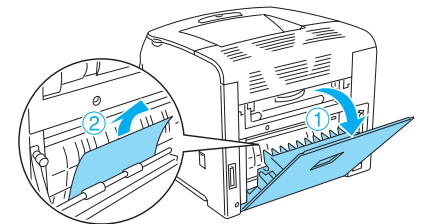


Quando si inceppano dei lucidi nel cassetto MF

1



2



3

