

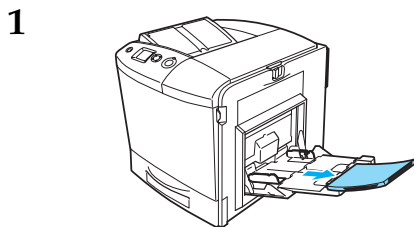
EPSON AcuLaser™ C2600/2600 Series Paper Jam Guide



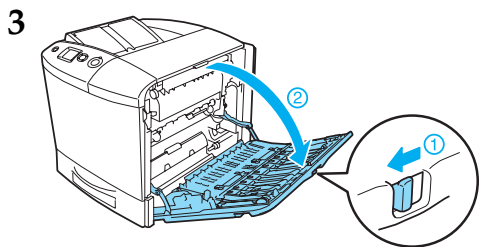
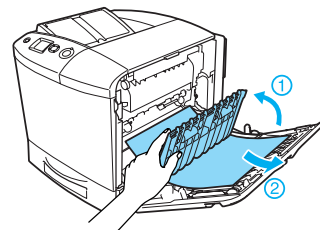
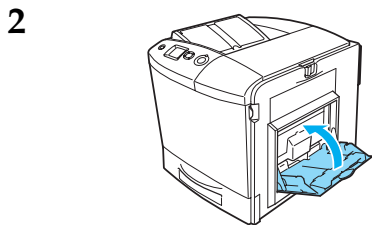
Warnings must be followed carefully to avoid bodily injury.

When the LCD panel displays the Jam WWWW error message, choose the appropriate description to clear the jammed paper.
For more information, see the Online User's Guide.

Jam A (cover A)

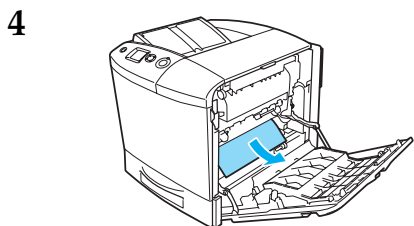


If the optional Duplex Unit is installed, lift up the Duplex Unit. Hold it and gently pull out any sheets of paper. Be careful not to tear the jammed paper.

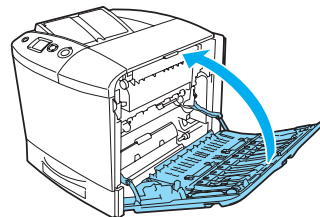


Warning:

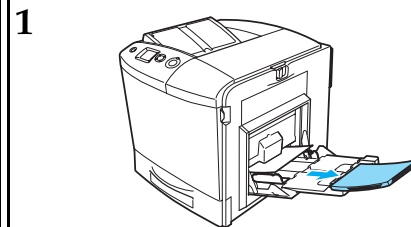
Be careful not to touch the fuser, which is marked CAUTION HIGH TEMPERATURE, or the surrounding areas. If the printer has been in use, the fuser and the surrounding areas may be very hot. If you must touch one of these areas, open cover A and B, then wait 30 minutes to allow the heat to subside before doing so.



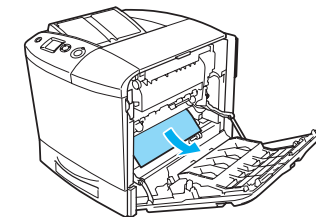
5



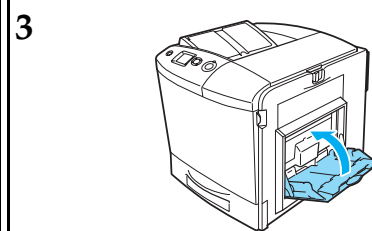
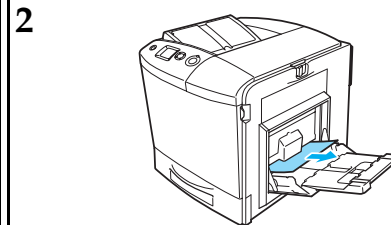
Jam MP, A (MP tray and cover A)



5

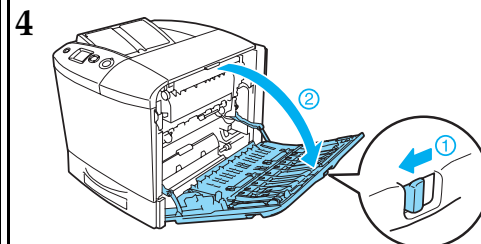


If the optional Duplex Unit is installed, lift up the Duplex Unit. Hold it and gently pull out any sheets of paper. Be careful not to tear the jammed paper.

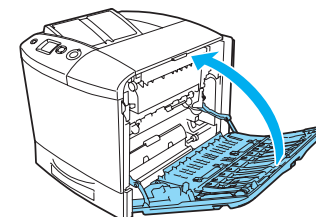


Warning:

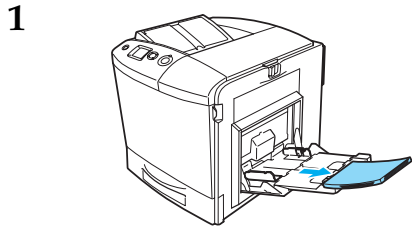
Be careful not to touch the fuser, which is marked CAUTION HIGH TEMPERATURE, or the surrounding areas. If the printer has been in use, the fuser and the surrounding areas may be very hot. If you must touch one of these areas, open cover A and B, then wait 30 minutes to allow the heat to subside before doing so.



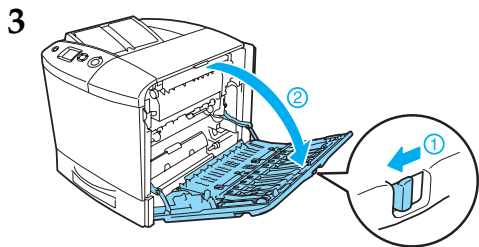
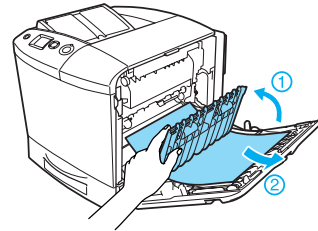
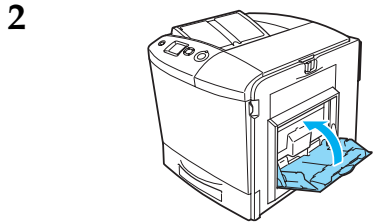
6



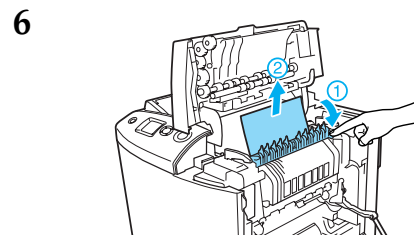
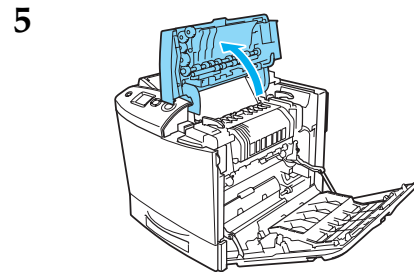
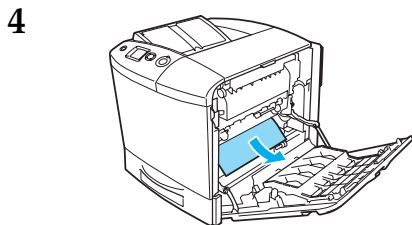
Jam A, B (cover A and B)



If the optional Duplex Unit is installed, lift up the Duplex Unit. Hold it and gently pull out any sheets of paper. Be careful not to tear the jammed paper.

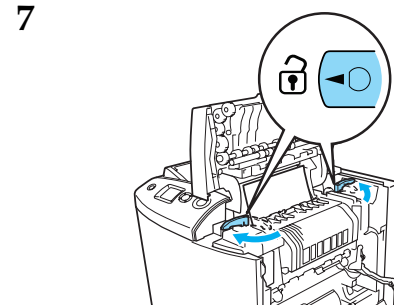


Warning: Be careful not to touch the fuser, which is marked CAUTION HIGH TEMPERATURE, or the surrounding areas. If the printer has been in use, the fuser and the surrounding areas may be very hot. If you must touch one of these areas, open cover A and B, then wait 30 minutes to allow the heat to subside before doing so.

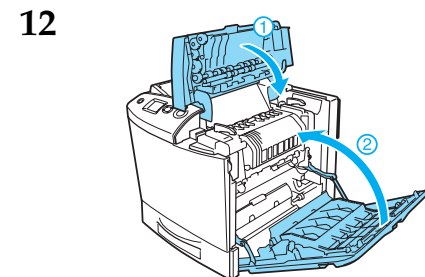
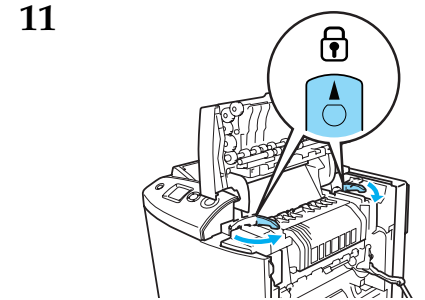
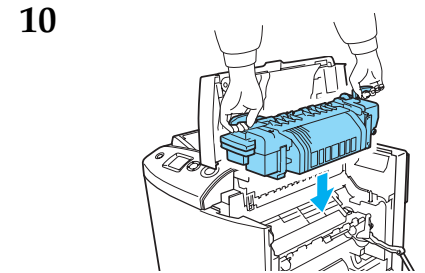
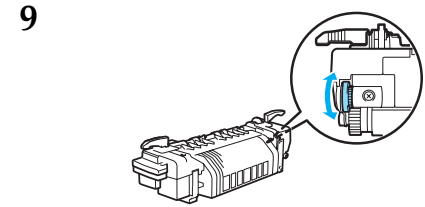
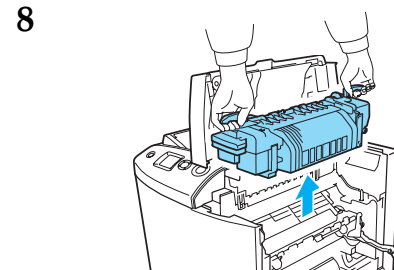


Warning: Be careful not to touch the fuser, which is marked CAUTION HIGH TEMPERATURE, or the surrounding areas. If the printer has been in use, the fuser and the surrounding areas may be very hot. If you must touch one of these areas, open cover A and B, then wait 30 minutes to allow the heat to subside before doing so.

If you can remove the paper, close covers B and A. If you cannot remove the paper, go to the next step.

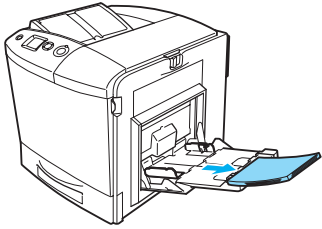


Warning: Be careful not to touch the fuser, which is marked CAUTION HIGH TEMPERATURE, or the surrounding areas. If the printer has been in use, the fuser and the surrounding areas may be very hot. If you must touch one of these areas, open cover A and B, then wait 30 minutes to allow the heat to subside before doing so.

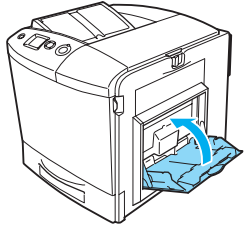


Jam A, C1 (cover A and standard lower paper cassette)

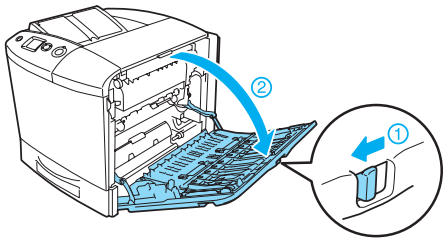
1



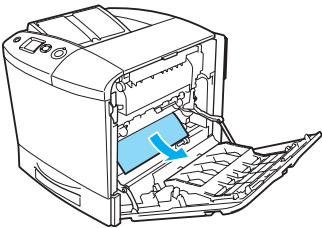
2



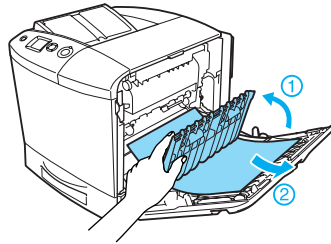
3



4



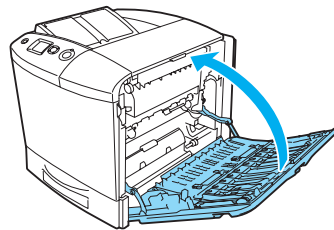
If the optional Duplex Unit is installed, lift up the Duplex Unit. Hold it and gently pull out any sheets of paper. Be careful not to tear the jammed paper.



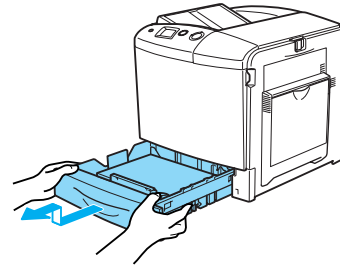
Warning:

Be careful not to touch the fuser, which is marked CAUTION HIGH TEMPERATURE, or the surrounding areas. If the printer has been in use, the fuser and the surrounding areas may be very hot. If you must touch one of these areas, open cover A and B, then wait 30 minutes to allow the heat to subside before doing so.

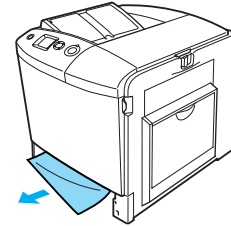
5



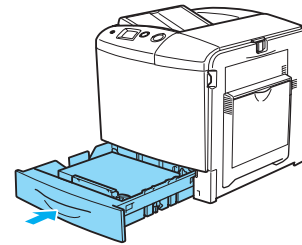
6



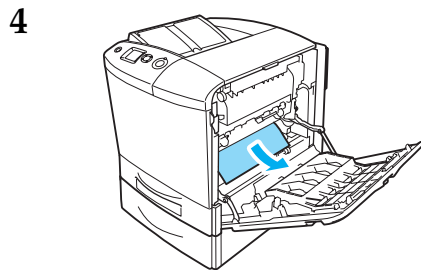
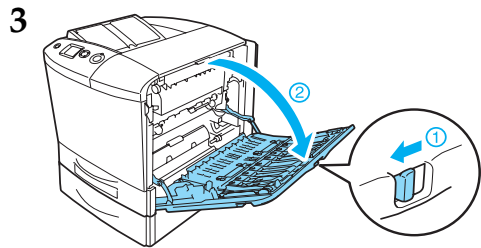
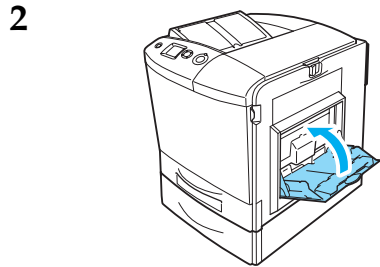
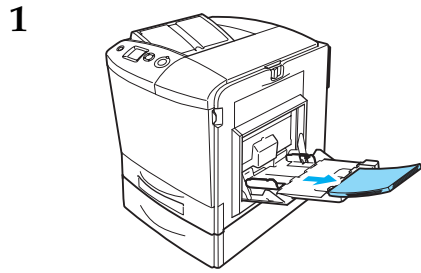
7



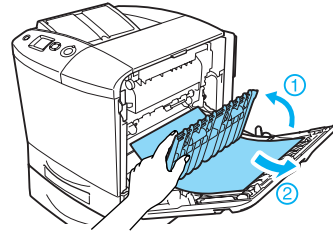
8



Jam A, E, C2 (cover A, E, and optional paper cassette)



If the optional Duplex Unit is installed, lift up the Duplex Unit. Hold it and gently pull out any sheets of paper. Be careful not to tear the jammed paper.



Warning:

Be careful not to touch the fuser, which is marked CAUTION HIGH TEMPERATURE, or the surrounding areas. If the printer has been in use, the fuser and the surrounding areas may be very hot. If you must touch one of these areas, open cover A and B, then wait 30 minutes to allow the heat to subside before doing so.

