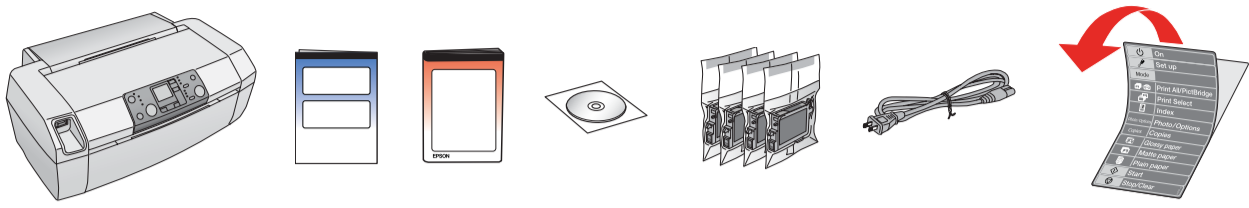


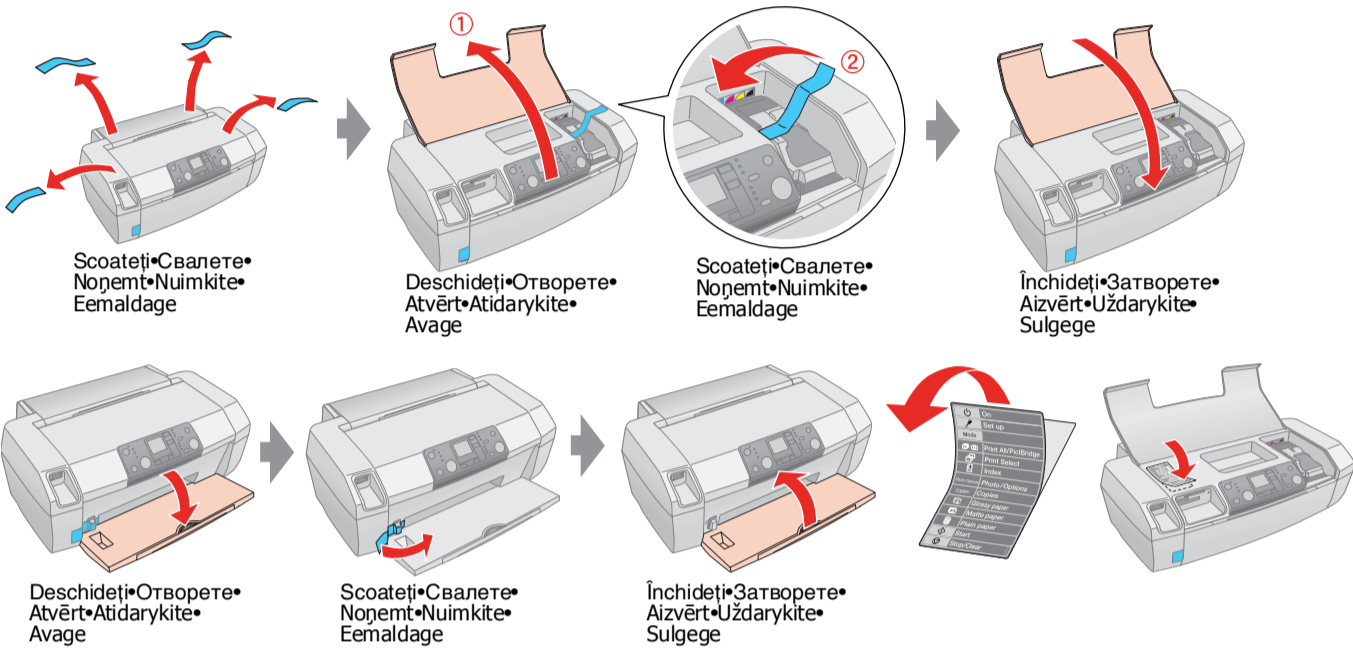
EPSON STYLUS™ PHOTO R240 Series

Începeți de aici • Започнете отук • Sākt darbu • Pradēti ģia • Alustage siit

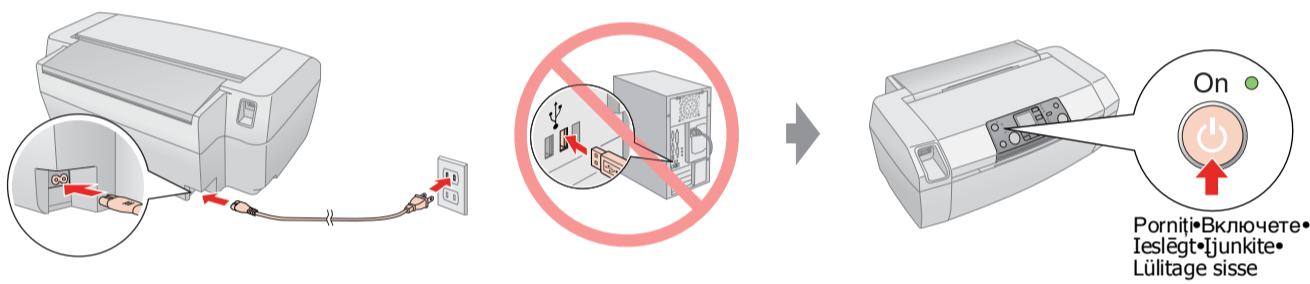
1. Despachetarea • Разопаковане • Izsainošana • Išpakavimas • Lahtipakkimine



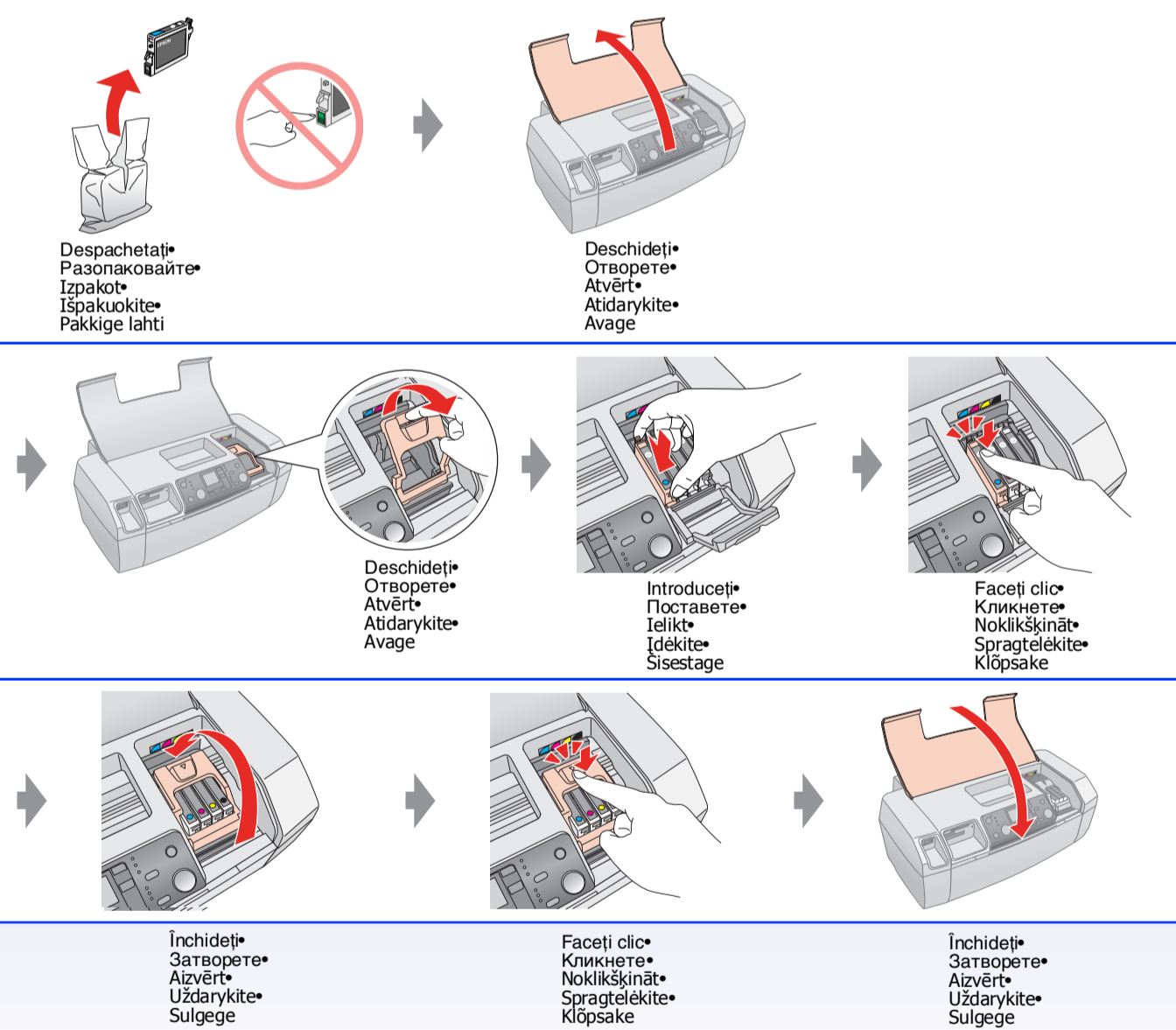
2. Scoaterea benzilor protectoare și lipirea autocolantului pentru panou • Сваляне на защитната лента и слагане лепенката на панела • Aizsarglentes un panela uzlimes nonemšana • Apsauginēs juostos nuēmimas ir skydeliolipdukopritvirtinimas • Kaitselindieemaldamine japaneelikleebise kinnitamine



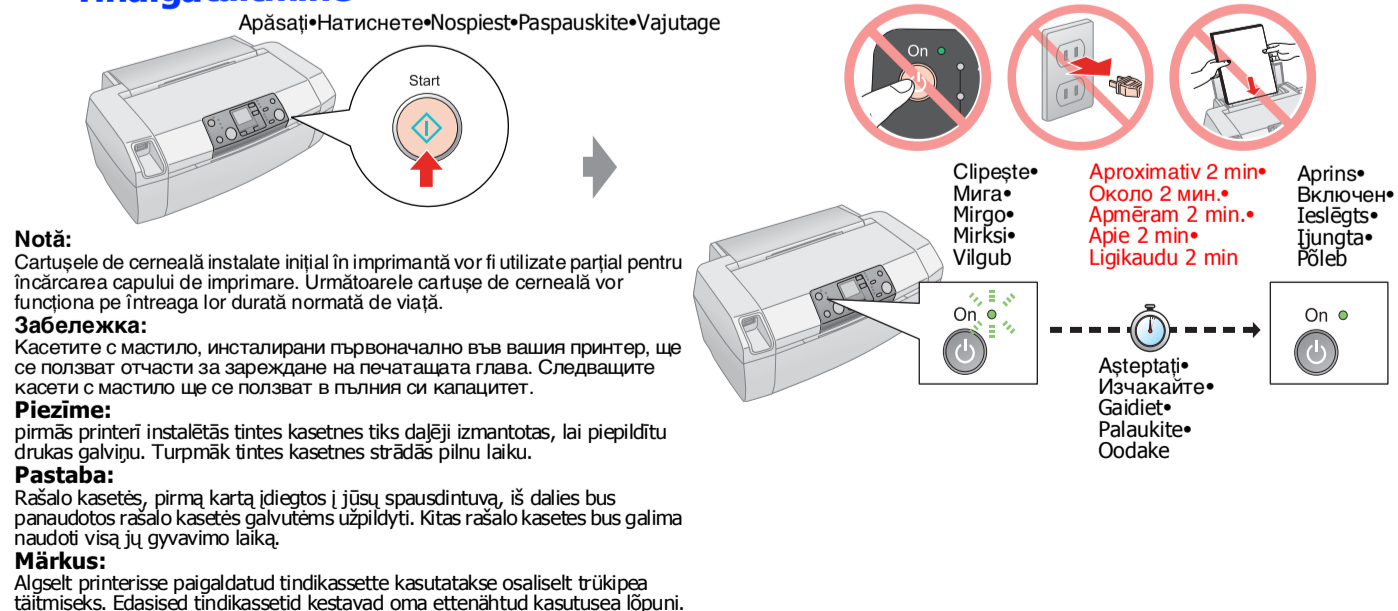
3. Conectarea cablului de alimentare • Включете захранващия кабел • Pievienot stravas vadu • Elektroskabeli prijungimas • Ūhendagetoitekaabepistikupessa



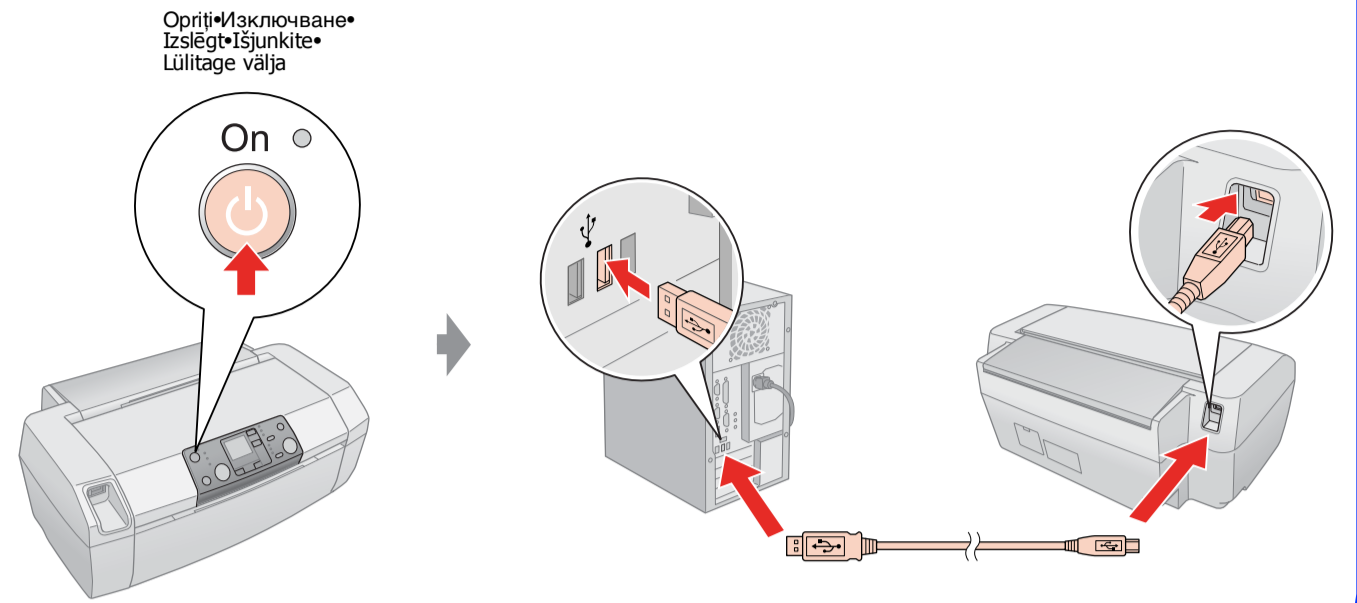
4. Instalarea cartușelor de cerneală • Поставяне на касетите с мастило • Tintes kasetnu instalešana • Rašalo kasečių įdiegimas • Tindikassettide paigaldamine



5. Încărcarea cernelei • Зареждане с мастило • Tintes uzpilde • Uzpildymas rašalu • Tindigatāitmine

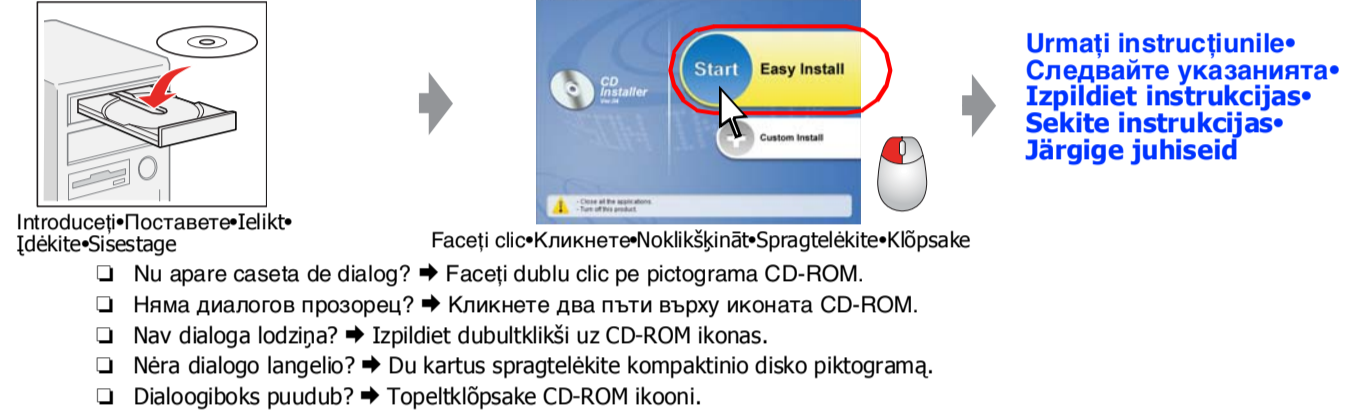


6. Conectarea la port-ul USB al computerului • Свързване към USB порта на вашия компютър • Pieslēgšanas datora USB portam • USB prievado prijungimas prie kompiuterio • Ūhendamine arvuti USB porti

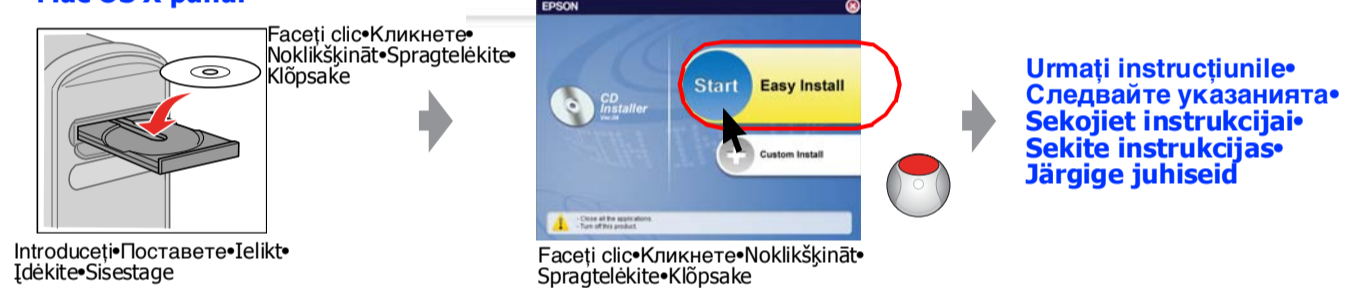


7. Instalarea software-ului • Инсталиране на софтуера • Programmaturas instalešana • Programinēs ģrangos ģdiegimas • Tarkvara installeerimine

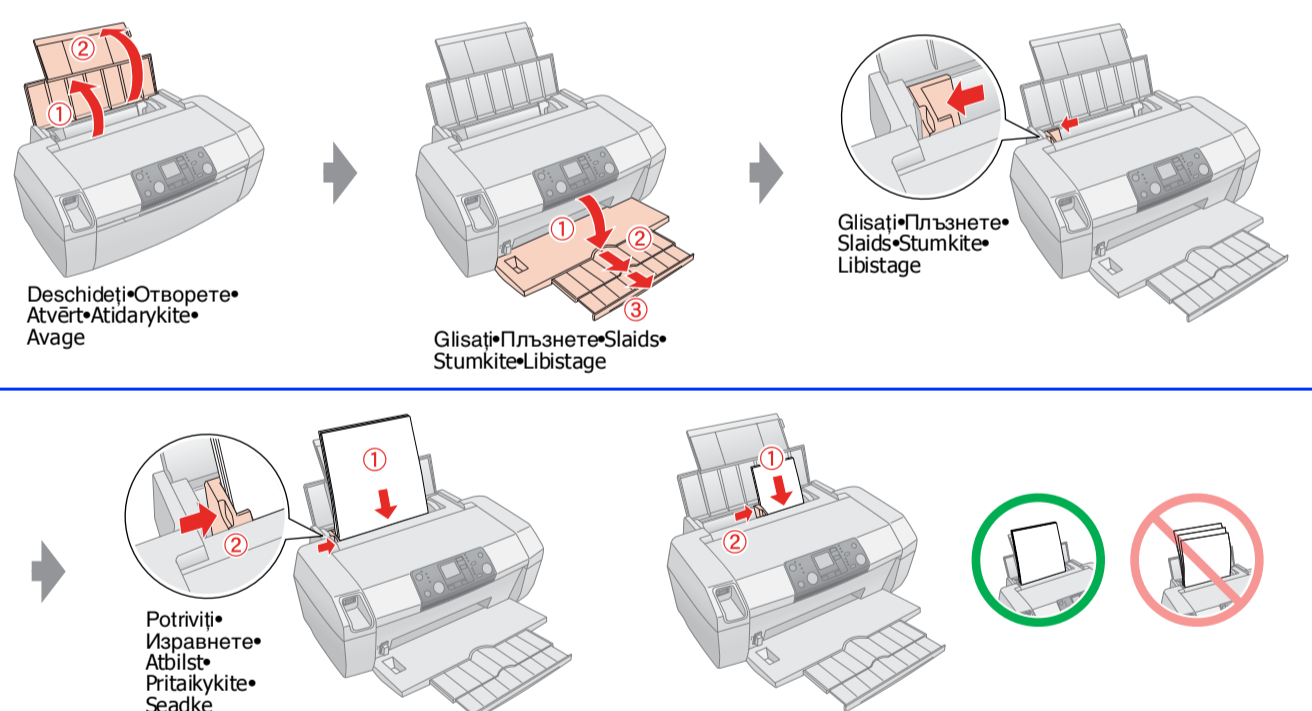
Pentru Windows • За Windows • Windows vidē • „Windows” vartotojams • Windowsi puhul



Pentru Mac OS X • За Mac OS X • Sistemā Mac OS X • „Mac OS X” vartotojams • Mac OS X puhul



8. Încărcarea hârtiei • Зареждане на хартия • Papira ielikšana • Popieriaus ģdējimas • Paberi laadimine



9. Cum se obțin mai multe informații • Получаване на повече информация • Papildinformācijas iegūšana • Kaip gauti daugiau informacijos • Lisateave

