

Basic Operation Guide



Introduction	2
Parts	2
Control Panel	3



Handling Paper	4
Selecting Paper	4
Loading Paper	4



Handling a CD/DVD	6
Loading a CD/DVD	6
Ejecting the CD/DVD Tray	7
Adjusting the Print Position	7



Copying	8
Placing Your Original on the Document Table	8
Copying Your Original	8
Reprinting a Photo	9
Printing With Fun Frames	11
Copying on a CD/DVD	11
Copying With Special Layouts	12
Selecting Special Print Settings	13



Making Prints From Your Memory Card	15
Inserting a Memory Card	15
Checking the Photos on Your Memory Card	16
Printing Your Photos	16
Printing From an Index Sheet	20
Cropping a Photo	22
Printing a CD/DVD	22
Creating a Jewel Case Insert	24
Printing Using a Combo Printing Sheet	24
Printing Your Stored Photos	27



Making Prints From Your Digital Camera	29
Connecting and Printing	29



Making Prints From Slides or Negatives	30
Removing the Document Mat and Film Holder	30
Placing 35-mm Slides in the Holder	30
Placing 35-mm Film Strips in the Holder	31
Printing Your Photos	31



Scanning to a Memory Card	35
Scanning a Photo	35
Scanning Slides or Film	35



Making Prints From Your Mobile Phone	37
Printing Snapshots	37
Infrared Specification	37



Maintaining and Transporting	38
Replacing Ink Cartridges	38
Checking and Cleaning the Print Head	39
Aligning the Print Head	40
Transporting Your EPSON STYLUS PHOTO RX	41
Changing the Language Displayed on the LCD Screen ..	41



Solving Problems	42
Error Messages	42
Problems and Solutions	42
Customer Support	45



Notices	46
Important Safety Instructions	46
Copyright Notice	47

Index	48
-------------	----

Summary of Panel Settings	52
---------------------------------	----

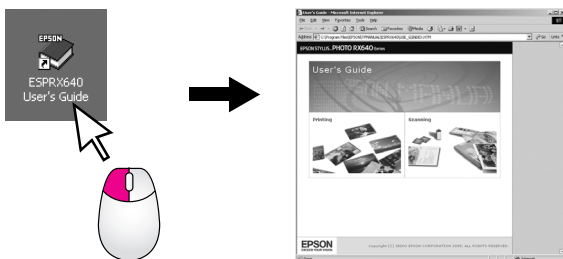
Introduction

After you have set up your EPSON STYLUS™ PHOTO RX as described on the *Start Here* sheet, turn here to:

- Load paper
- Load a CD/DVD
- Make a quick copy of a document or photo
- Print photos stored on a memory card
- Print photos from a digital camera
- Print photos from slides and negatives
- Scan to a memory card
- Print photos from a mobile phone
- Perform routine maintenance
- Solve simple problems

This book tells you how to do these things without ever turning on your computer! Of course your EPSON STYLUS PHOTO RX can do lots more when you connect it to your Windows® or Macintosh® computer—such as improving the color and quality of your prints and scanned images or scanning part of a photo.

For complete instructions on using the EPSON STYLUS PHOTO RX with your computer, see the on-screen *User's Guide*. An icon for the guide was automatically placed on your desktop when you installed the software.



Please follow these guidelines as you read your instructions:

Warning:

Warnings must be followed carefully to avoid bodily injury.

Caution:

Cautions must be observed to avoid damage to your equipment.

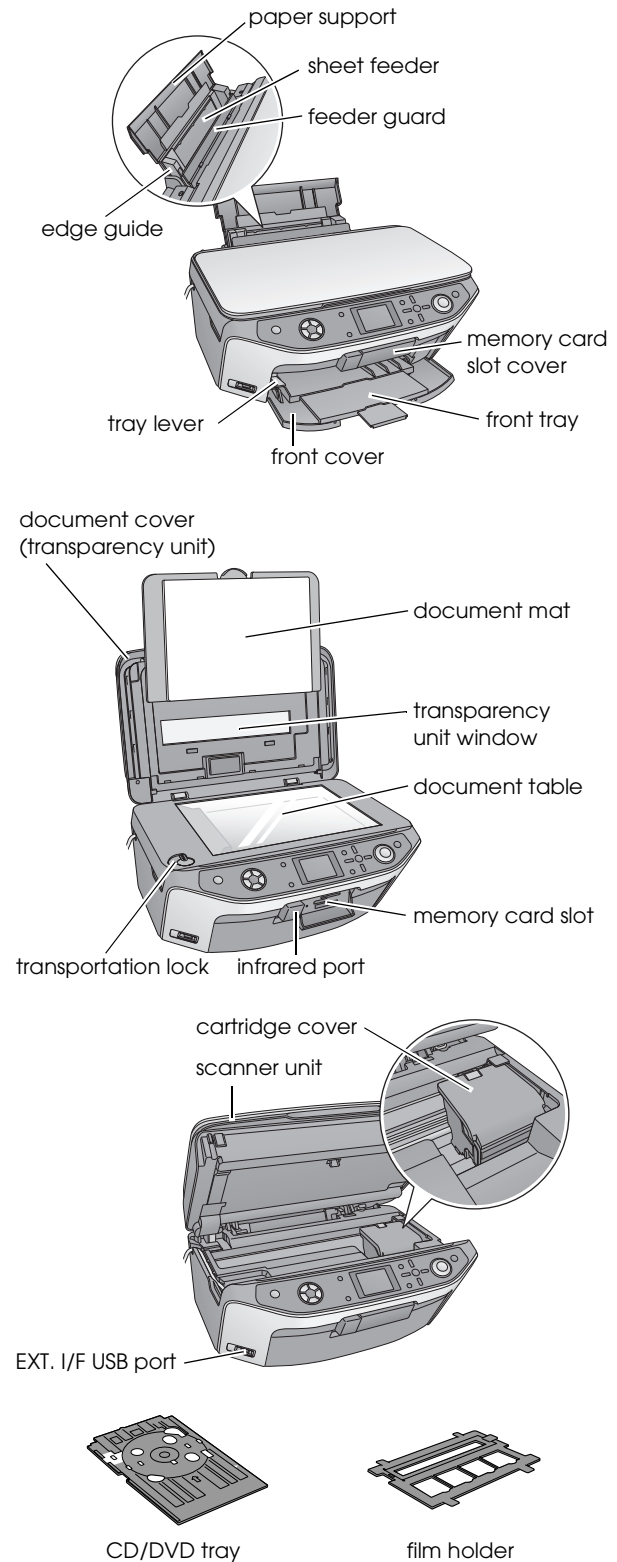
Note:

Notes contain important information about your EPSON STYLUS PHOTO RX.

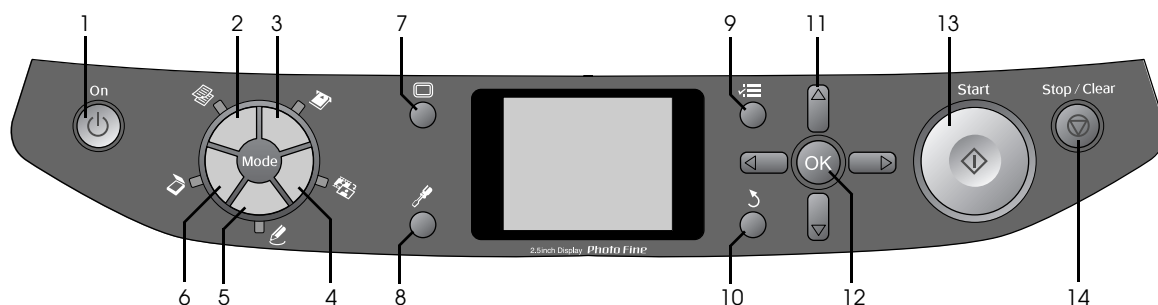
Tip:

Tips contain hints for better copying, printing, and scanning.

Parts



Control Panel



Buttons

	Buttons	Function
1	On	Press to turn the EPSON STYLUS PHOTO RX on and off.
2	Copy	Press to copy a photo or a document.
3	Memory Card	Press to print from a memory card.
4	Slide/Negative	Press to print from slides, negatives, or film strips.
5	Specialty Print	Press to print photos using a combo printing sheet, print on CD/DVDs, make copies or restore faded photos, or print with colorful frames.
6	Scan	Press to scan to a memory card or to your computer.
7	Display	Press to change the view of photos on the LCD screen when selecting photos.
8	Setup	Press to run maintenance programs or adjust miscellaneous settings.
9	Print Settings	Press to display detailed settings for each mode.
10	Back	Press to cancel the current operation on the LCD screen and return to the previous menu.
11	4-way Scroll	Press to select menu items.
12	OK	Press to activate the settings you have selected.
13	Start	Press to start copying, printing, or scanning.
14	Stop/Clear Settings	Press to stop copying, printing, scanning, or reset the settings you have made.

LCD screen

The screen displays a preview of the selected images, or displays settings that you can change with the buttons.



Saving power

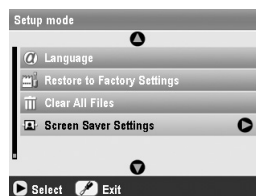
If the EPSON STYLUS PHOTO RX is inactive for more than three minutes and **Screen Saver Settings** is set to **Memory Card Data**, the slide show begins.

After 13 minutes of inactivity, the screen turns black to save energy and the LEDs for the mode buttons turn on and off in a clockwise rotation.

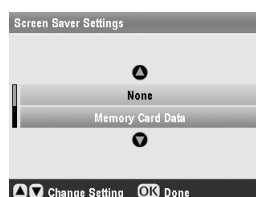
Press any button (except **On**) to return the screen to its previous state.

Setting the screen saver

1. Press the **Setup** button.
2. Use the **▲** or **▼** button to select **Screen Saver Settings**, then press the **►** button.



3. Select **Memory Card Data** or **None**.



4. Press **OK**.

Handling Paper

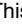
Epson offers an extensive line of specialty papers that provide outstanding results when used with Epson printers and ink. The type of paper you choose affects the way your printout looks, so be sure to select the correct paper for your job.

Selecting Paper

Before printing, you need to select the correct Paper Type setting on the LCD screen. This important setting tells the EPSON STYLUS PHOTO RX what kind of paper you are using so it can adjust how to apply the ink.

Choose from these papers and settings:

Paper Type	Size	Paper Type Setting	Max. no. of Sheets
Plain paper	A4 A5 *1	Plain Paper	120
Epson Bright White Paper	A4	Plain Paper	80
Epson Matte Paper Heavyweight	A4	Matte	20
Epson Photo Quality Ink Jet Paper	A4	PQIJ	100
Epson Photo Quality Self Adhesive Sheets	A4	PQIJ	1
Epson Premium Glossy Photo Paper	10 × 15 cm (4 × 6 in.) 13 × 18 cm (5 × 7 in.) A4 16:9 wide size (102 × 181 mm)	Prem.Glossy	20
Epson Premium Semigloss Photo Paper	10 × 15 cm (4 × 6 in.) A4	SemiGloss	20
Epson Photo Paper	10 × 15 cm (4 × 6 in.) A4	Photo Paper	20
Epson Photo Stickers *2	A6	Photo Stickers	1
Epson Ultra Glossy Photo Paper	A4 10 × 15 cm (4 × 6 in.) 13 × 18 cm (5 × 7 in.)	Ultra Glossy	20

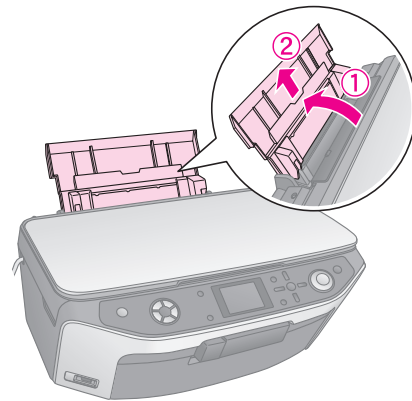
*1 This paper size is only available in  **Copy** mode.

*2 This paper type is only available when making prints from your memory card, digital camera, or mobile phone.

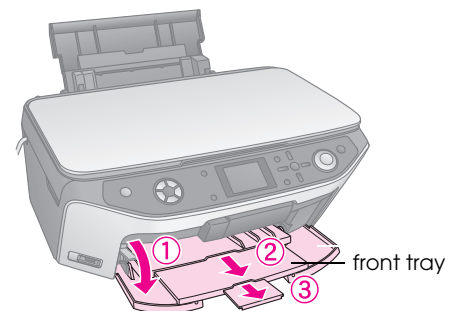
Make sure you return unused paper to the original package as soon as you finish printing. Store your printouts in a photo album, resealable plastic bag, or protective plastic sleeves. Keep them away from high temperature, humidity, and direct sunlight.

Loading Paper

1. Open and extend the paper support.

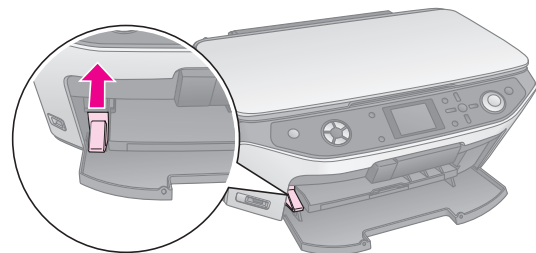


2. Open the front cover and slide out the front tray.

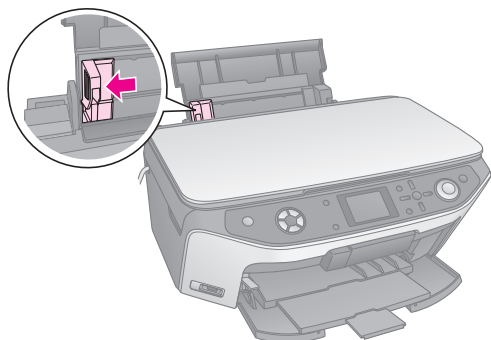


Note:


Make sure the front tray is in the paper position (lower position). If it is not, move the tray lever up and reposition the front tray.



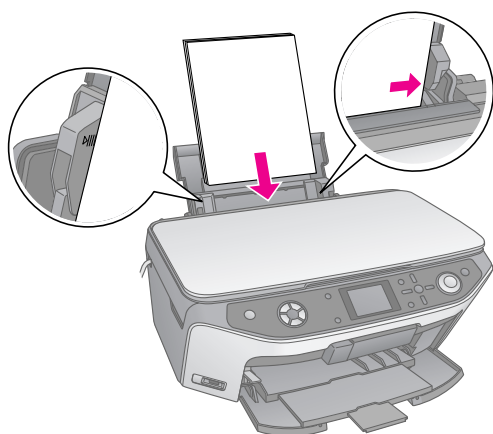
3. Slide the edge guide to the left.



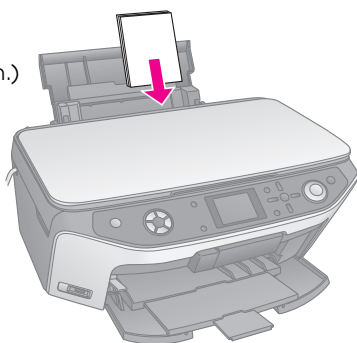
4. Load the paper against the right side of the sheet feeder with the printable side up. The printable side is usually whiter or glossier.

Place the stack of paper behind the tabs and make sure it fits under the  arrow mark inside the left edge guide. Always load paper short edge first, even for landscape printing.

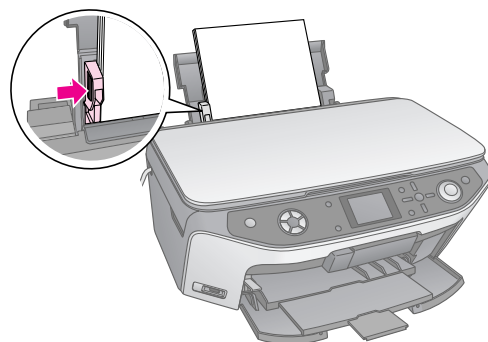
The printable side is often whiter or brighter than the other side.



10 × 15 cm (4 × 6 in.)
photo paper



5. Slide the edge guide lightly against the left side of the paper.



Note:

If you are using special Epson paper, follow any instructions that came with it. Make sure you do not load more than the recommended number of sheets. Check the **Paper Type** setting before printing to make sure it matches the type of paper you have loaded (➔ page 4).

Now you are ready for copying or making prints, see these sections:

- “Copying” on page 8
- “Making Prints From Your Memory Card” on page 15
- “Making Prints From Your Digital Camera” on page 29
- “Making Prints From Slides or Negatives” on page 30
- “Making Prints From Your Mobile Phone” on page 37

Handling a CD/DVD

Your EPSON STYLUS PHOTO RX includes a special tray that lets you print directly on any ink-jet printable CD/DVD.

⚠ Caution:

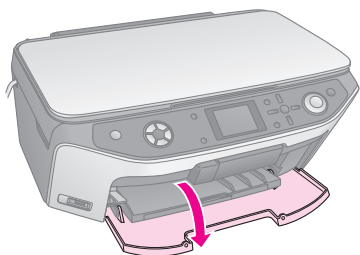
You cannot print on thermal-printable CD/DVDs.

To print on 8-cm mini CDs, use the EPSON Print CD software included with your EPSON STYLUS PHOTO RX. See the instructions in your on-screen *User's Guide*.

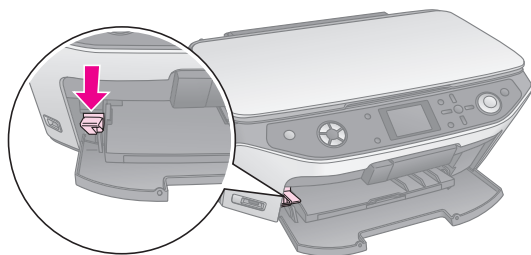
Loading a CD/DVD

Make sure the data, music, or video is burned on your ink-jet printable CD/DVDs before you print. Otherwise, dirt or scratches on the surface may cause errors when you burn the data. If you plan to print large numbers of CD/DVDs, it is a good idea to print a small sample, then wait a day and check the quality to make sure it is satisfactory.

1. Turn on the EPSON STYLUS PHOTO RX and open the front cover.



2. Move the tray lever down until the front tray is lifted to the CD/DVD position.



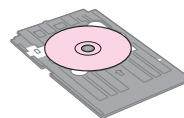
⚠ Caution

- ❑ Do not touch the front tray when operating the tray lever.
- ❑ Do not move the tray lever while the EPSON STYLUS PHOTO RX is operating.

Note:

Before you move the tray lever, make sure no paper or other objects are on the front tray and the front tray is not extended.

3. Place your CD/DVD on the CD/DVD tray with the label surface up. (Make sure the surface is clean.)



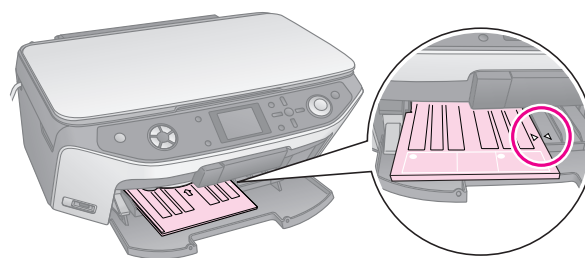
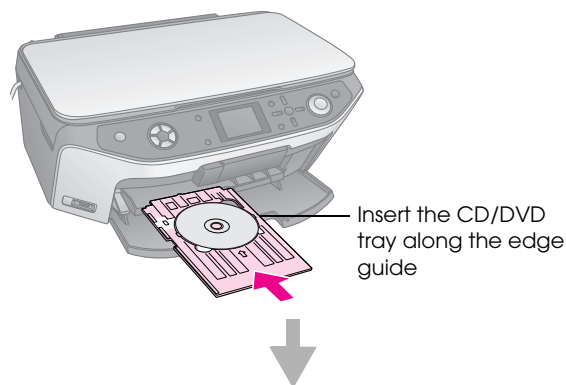
Note:

Use the CD/DVD tray that comes with the EPSON STYLUS PHOTO RX. The tray cannot be used with other products.

4. Insert the tray into the EPSON STYLUS PHOTO RX until the arrow mark on the CD/DVD tray is aligned with the arrow mark on the front tray.

⚠ Caution:

Do not insert the CD/DVD tray while the EPSON STYLUS PHOTO RX is operating. Otherwise, your EPSON STYLUS PHOTO RX may be damaged or the surface of the CD/DVD may become dirty or scratched.

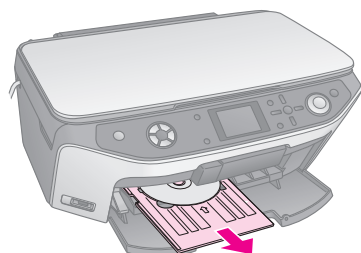


Now you are ready to copy or print on a CD/DVD.

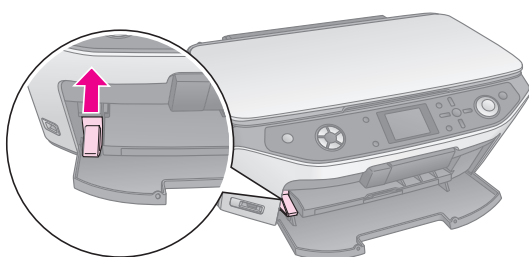
- To copy on a CD/DVD, see "Copying on a CD/DVD" on page 11
- To print on a CD/DVD, see "Printing a CD/DVD" on page 22

Ejecting the CD/DVD Tray

1. Make sure that printing is finished.
2. Eject the CD/DVD tray by pulling it straight out of the front tray.



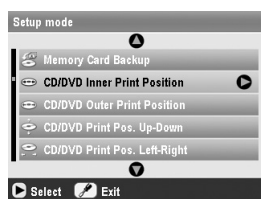
3. Move the tray lever up to reposition the front tray.



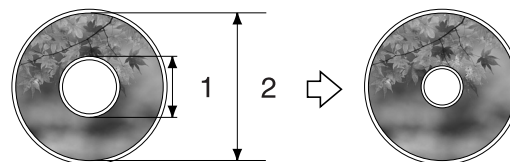
Adjusting the Print Position

If your printed image is not centered on the CD/DVD, you can adjust its printing position.

1. If necessary, print a test sample using an extra CD/DVD.
2. Press the **Setup** button.
3. Use the or button to select the print position options.



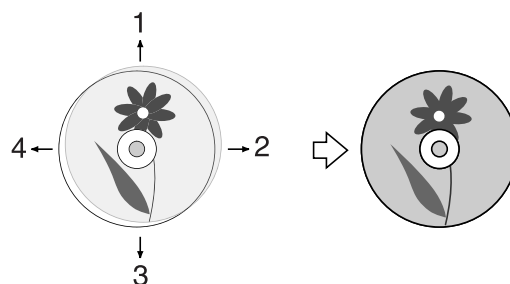
Inner/Outer Print Position



1. Inner
2. Outer

Options	Description
CD/DVD Inner Print Position	Select to resize the print position for the inside diameter of the CD/DVD label. You can adjust it by 1 mm from 18 to 46 mm.
CD/DVD Outer Print Position	Select to resize the print position for the outside diameter of the CD/DVD label. You can adjust it by 1 mm from 114 to 120 mm.

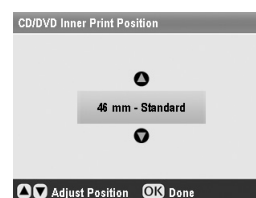
Up-Down/Left-Right Print Position



1. Move the CD/DVD up
2. Move the CD/DVD right
3. Move the CD/DVD down
4. Move the CD/DVD left

Options	Description
CD/DVD Print Pos. Up-Down	Select to finely adjust the CD/DVD print position. You can adjust it by 0.1 mm from -2 to +2 mm up and down.
CD/DVD Print Pos. Left-Right	Select to finely adjust the CD/DVD print position. You can adjust it by 0.1 mm from -2 to +2 mm left and right.

4. Press the button and then use the , , , or buttons to select how far (in millimetres) to move the print position.



5. Press **OK** to apply the new setting.

Note:

The EPSON STYLUS PHOTO RX retains your settings even after it has been turned off, so you do not need to readjust the printing position each time you print a CD/DVD.

Copying

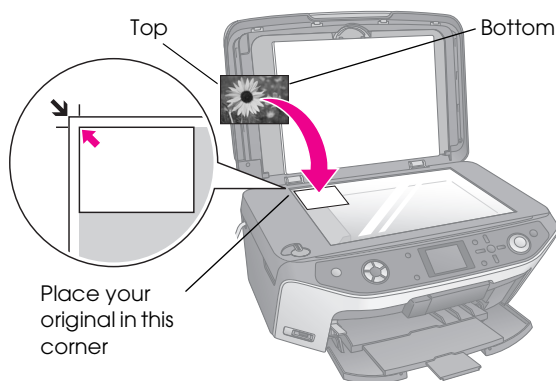
You can use your EPSON STYLUS PHOTO RX to copy documents and photos without a computer. If you have photos that have become faded over time, you can even bring them back to life with Color Restoration.

Notes for copying

- The copied image may not be exactly the same size as the original.
- Depending on the type of paper used, print quality may decline in the top and bottom areas of the printout, or these areas may be smeared.
- If the EPSON STYLUS PHOTO RX runs out of paper while copying, make sure you replace the paper as soon as possible. Color accuracy may be affected if you leave the EPSON STYLUS PHOTO RX without paper for a long period of time.
- If you see a low ink message while you are copying, you can either continue copying until the ink runs out, or stop and replace the cartridge.
- Keep the document table clean.
- Make sure the document or photo is flat against the document table; otherwise, the copy will be out of focus.
- If a moiré pattern (cross-hatch) appears on your copy, change the Zoom setting or shift the position of your original.

Placing Your Original on the Document Table

1. Open the document cover and place your original face-down on the document table, in the upper left corner.



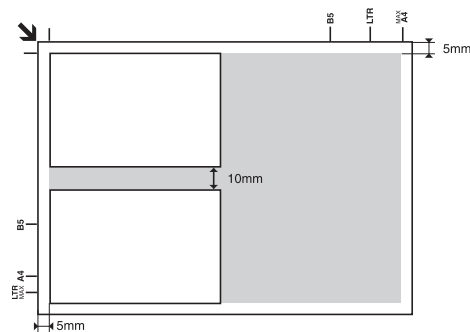
Note:

If the edges of the copy are cropped off, move the original away from the corner slightly.

2. Close the cover gently so you do not move the original.

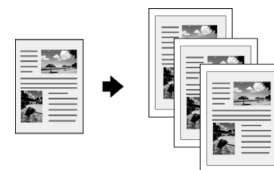
Copying multiple photos

You can place several photos on the document table at one time to make extra prints; a separate print is made of each photo (➔ page 9). Place each photo horizontally as shown in the illustration below.



- You can copy photos from 30 × 40 mm to 127 × 178 mm.
- Position each photo at least 10 mm away from the adjacent photo.
- You can copy two 10 × 15 cm (4 × 6 in.) size photos at a time.

Copying Your Original



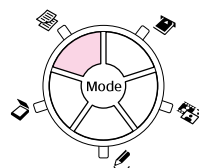
You can copy black-and-white materials such as books and newspaper clippings—or materials with colorful graphic designs such as magazine articles and scrapbook elements.

Tip:

Plain photocopier paper works well for making everyday copies. For crisper text and more vivid colors, try one of the special Epson papers listed on page 4.





1. Load your paper (➔ page 4), then place your original on the document table (➔ page 8).

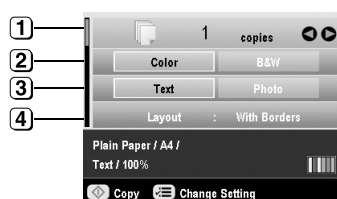
- Press the  **Copy** mode button.



Note:

The EPSON STYLUS PHOTO RX retains the last settings you used, so always check them to make sure they are the ones you want.

- Use the  or  button to select the menu item and use the  or  button to select the setting item.



- Select the number of copies.

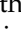
- Select **Color** for color copies or **B&W** for black-and-white copies.

- Select **Text** for text documents or **Photo** for photos and graphics.

- Select **With Borders** (➔ page 12 for layout options).


Note:

- To reprint a photo with a professional finish, see the next section.
- When **CD Copy** is selected as the **Layout** you cannot change the number of copies.

- Check the print settings under the menu items. If necessary, press the  **Print Settings** button and change these settings. (➔ page 13 for print settings.) Then press **OK** to apply the new settings.



Check the print settings


- Press the  **Start** button. Your document is copied.

If you need to stop copying, press the  **Stop/Clear Settings** button.

Caution:

To avoid damaging the EPSON STYLUS PHOTO RX, never open the scanner unit while scanning or copying.

Tip:


If you need to make your copies lighter or darker, press the  **Print Settings** button and adjust the **Copy Density**. Then press **OK** to apply the setting.

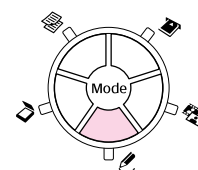
Reprinting a Photo



You can print long-lasting photos with a professional finish by choosing one of the following Epson papers specially designed for photos.

Paper Type	Size	Paper Type Setting	Max. no. of Sheets
Epson Matte Paper Heavyweight	A4	Matte	20
Epson Premium Glossy Photo Paper	10 × 15 cm (4 × 6 in.) 13 × 18 cm (5 × 7 in.) A4	Prem.Glossy	20
Epson Premium Semigloss Photo Paper	10 × 15 cm (4 × 6 in.) A4	SemiGloss	20
Epson Photo Paper	10 × 15 cm (4 × 6 in.) A4	Photo Paper	20
Epson Ultra Glossy Photo Paper	A4 10 × 15 cm (4 × 6 in.) 13 × 18 cm (5 × 7 in.)	Ultra Glossy	20

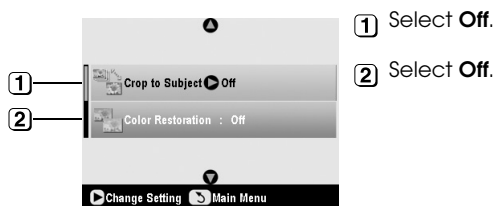
- Load your paper (➔ page 4), then place your original on the document table (➔ page 8).
- Press the  **Specialty Print** mode button.



- Use the  or  button to select **Reprint/Restore Photos**, and then press **OK**.

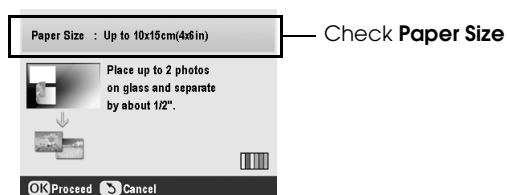


- Use the ▲ or ▼ button to select the menu item, and then press the ► button. Use the ▲ or ▼ button to select the setting item. Then press **OK** to apply the new settings.



Setting	Description
Crop to Subject	Select On if you have a photo with a subject in it that you want to emphasize. Then you can crop out the rest of the photo and print the main subject by itself (see the next section).
Color Restoration	Select On if you want to restore color to faded photos. ➔ "Restoring color in photos" on page 11

- Press **OK** and then check the **Paper Size** setting at the top of the screen and then press **OK** again. Your photo is previewed.



- Use the ◀ or ▶ button to select the photo, and use the ▲ or ▼ button to select the number of copies.
- Check the print settings. If necessary, press the ≡ Print Settings button and change these settings (➔ page 13 for print settings). Then press **OK** to apply the new settings.



- Press the ⬢ **Start** button. Your photo is copied.

If you need to stop copying, press the ⏻ **Stop/Clear Settings** button.

Note:

If you select the **Borderless** layout, your image is slightly enlarged and cropped to fill the sheet of paper.

Cropping a photo

You can crop and enlarge photos when you copy. Before you start, place your photo on the document table (➔ page 8) and load the paper you want to print on (➔ page 4).

- Press the **Specialty Print** mode button and select **Reprint/Restore Photos**. Then press **OK**.
- Make sure **Crop to Subject** is set to **On**.



- Press **OK**. The EPSON STYLUS PHOTO RX displays your photos on the screen.



- Use the ◀ or ▶ button to select the photo you want to crop, then press **OK**.

You see the first cropping screen.



- Use the ▲, ▼, ◀, and ▶ buttons to move the frame to the center of the area you want to crop. (If the frame stops moving when it reaches an edge, you can come back to this step later after resizing the frame.) Press **OK** when done.

You see the second cropping screen.



- Use the ▲ or ▼ button to increase or decrease the size of the frame.

Note:

To readjust the frame's position, press the ⏮ Back button to return to the previous screen.

- When you have finished framing the photo, press **OK**. (If you need to adjust it further, press the **Back** button to return to the previous screens.)
- Use the **▲** or **▼** button to select the number of copies (1 to 99).



- Check the print settings. If necessary, press the **Print Settings** button and change these settings. (➔ page 13 for print settings.) Then press **OK** to apply the new settings.
- Press the **Start** button to start printing.

If you need to cancel printing, press the **Stop/Clear Settings** button.

Restoring color in photos

If you have photos that have become faded over time, you can bring them back to life with color restoration.

To restore color to faded photos, follow the instructions on the preceding pages to place your photos on the document table (➔ page 8) and adjust the settings.

- Press the **Specialty Print** mode button and select **Reprint/Restore Photos**. Then press **OK**.
- Make sure **Color Restoration** is set to **On**.



- Continue from step 5 from "Reprinting a Photo" on page 9 to reprint your photos.

Note:

- You can restore color to faded photos up to 10 × 15 cm (4 × 6 in.).
- You can also restore color to photos larger than 10 × 15 cm (4 × 6 in.) when you scan them to your computer. See your on-screen *User's Guide* for details.

Printing With Fun Frames



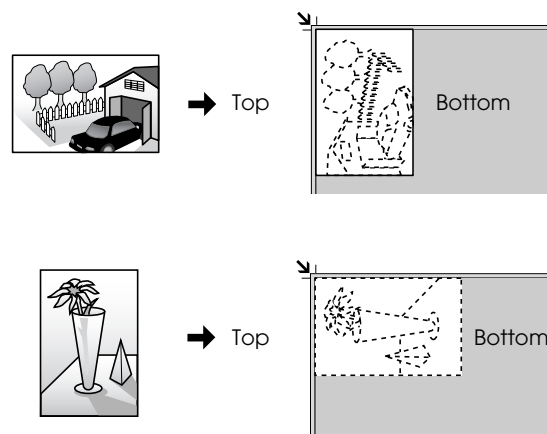
You can add colorful frames to your favorite photographs with **PRINT Image Framer**.

- Choose from a variety of frames on the CD-ROM that came with your **EPSON STYLUS PHOTO RX** and save them to a memory card using **EPSON PRINT Image Framer Tool**. For details, see the software help.

Tip:

You can also use the **PIF DESIGNER** software to edit the existing frames or create your own frames. For details, see the software help.

- Load the appropriate paper for the frame size (➔ page 4).
- Place your original on the document table.




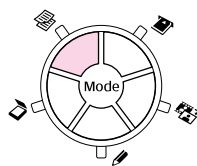
- Insert a memory card containing **P.I.F.** frames (➔ page 15).
- Continue from step 4 "Printing with fun frames" on page 19 to print the frame photos.





Copying on a CD/DVD

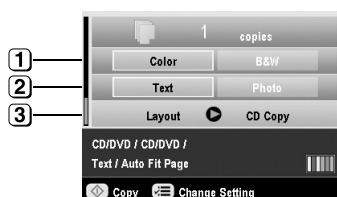
You can copy colorful designs directly onto a **CD/DVD** without using your computer. You can either scan a design and copy it onto the **CD/DVD** or use one of your photos.

- Place your **CD/DVD** on the **CD/DVD** tray and insert it into the **EPSON STYLUS PHOTO RX** (➔ page 6).


- Place the original you want to copy on the document table (➔ page 8). The image is automatically cropped and resized to fit on the CD/DVD label.
- Press the  **Copy** mode button.



- Use the , , , and  buttons to select these settings.



- Select **Color** for color copies or **B&W** for black-and-white copies.
- Select **Text** or **Photo**.
- Select **CD Copy** (➔ page 12 for layout options).


- Check the print settings under the menu items. If necessary, press the  Print Settings button and change these settings. (➔ page 13 for print settings.) Then press **OK** to apply the new settings.



Check the print settings

Tip:


If you want to check the print output before, select **Plain Paper** as the **Paper Type** setting and load plain paper.

- Press the  **Start** button. Your CD/DVD is printed.

If you need to stop copying, press the  **Stop/Clear Settings** button.

- When printing is complete, pull the tray out of the EPSON STYLUS PHOTO RX (➔ page 7) and let the CD/DVD dry fully before handling it.
- When you finish printing CD/DVDs, raise the tray lever to return the front tray to its former position (➔ page 7).

Tip:

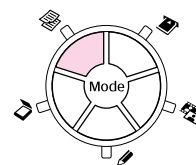
If ink smears on your printed CD/DVDs, you may need to adjust the ink density. CD/DVDs from different manufacturers absorb ink differently, so you may need to adjust the setting for each brand. After making basic print settings, press the  Print Settings button. Change the **Copy Density** as needed, then press **OK**.




Copying With Special Layouts

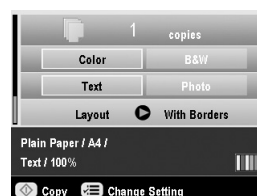
Whether you are copying a newspaper clipping or a photograph, your EPSON STYLUS PHOTO RX lets you print your copies using a variety of layouts.



Selecting a Copy Layout

- Press the  **Copy** mode button.



- Use the  or  button to select **Layout** and press the  button.

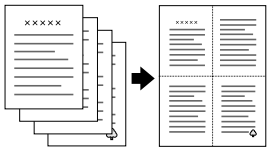
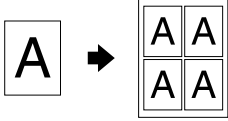
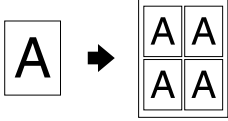


- Use the  or  button to select one of these layout options, then press **OK**.



- Select the Copy Layout.
- Press the **OK** button.

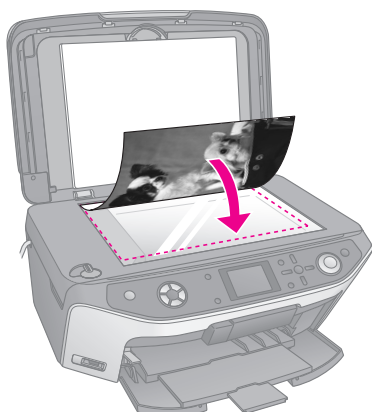
Copy Layout Setting	Result
With Borders Copies your original with a standard 3 mm margin.	
Borderless* Copies your photo all the way to the edges of the paper.	
CD Copy Copies your photo onto a CD label using the Auto-fit function.	
2-up Copy Copies two originals onto one sheet.	

Copy Layout Setting	Result
4-up Copy Copies four originals onto one sheet.	
Repeat Copy Prints a photo at actual size as many times as it will fit on one sheet.	
Repeat Copy-4, 9, or 16 Prints a photo multiple times on one sheet; select 4, 9, or 16 photos per sheet.	

* Borderless copying is available only when you are using Epson photo paper in the sizes listed. If you notice reduced print quality at the bottom of your print, try using a layout with borders.

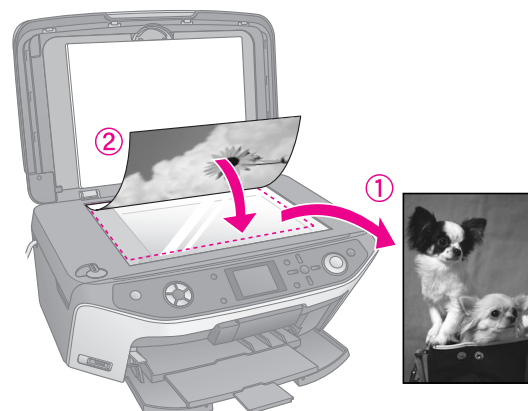
Copying 2 or 4 originals on one sheet

1. Place the first original on the document table (➡ page 8).

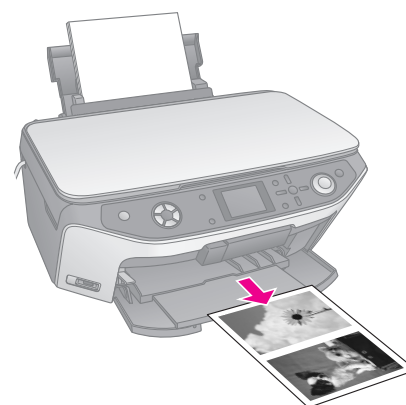


2. Select **2-up Copy** as the Copy Layout. If you want to copy four originals on one sheet, select **4-up Copy**. Press **OK**.
➡ "Selecting a Copy Layout" on page 12
Note:
If you choose **4-up** as the layout setting, but you do not select four originals, a blank space is left for any missing originals.
3. Press the **Print Settings** button and change the settings if necessary (➡ page 13). Then press **OK** to apply the new settings.
4. Press the **Start** button. The first original is scanned and the EPSON STYLUS PHOTO RX starts copying.

5. When the EPSON STYLUS PHOTO RX finishes scanning the first original, place the second original on the document table.



6. Press the **Start** button again. The second original is scanned, and the copy is printed.

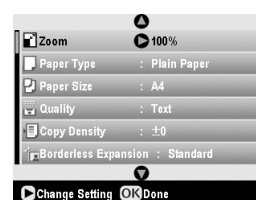


If you want to copy four originals on one sheet, repeat steps 5 and 6 twice.

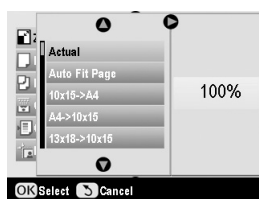
Selecting Special Print Settings

You can choose from various sizes and types of Epson paper to get just the results you want.

1. After pressing the **Copy** mode button, or pressing the **Specialty Print** mode button and making copy settings, press the **Print Settings** button.
2. Use the **▲** or **▼** button to select the menu item, then press the **►** button.



- Use the ▲ or ▼ button to select the setting item, and then press **OK** to apply the new setting.



Copy mode	
Zoom	For borderless printing, select Auto Fit Page . Otherwise, select Actual to print your photo at its original size; or resize the image to fit various common paper sizes. You can also resize the original by a specific amount (25 to 400%).
Paper Type	Select the setting for the type of paper you loaded (➡ page 4).
Paper Size	Select the paper size you loaded.
Quality	Select the quality of the copy to be made.
Copy Density	Adjust the density of copied documents.
Borderless Expansion	Adjust the margins that are trimmed when you select Borderless . Standard: No margins are printed. Mid: The expansion rate is low. (The margins might be printed.) Min: The expansion rate is lower than Mid . (The margins might be printed.)
Specialty Print mode	
Paper Type	Select the setting for the type of paper you loaded (➡ page 4).
Paper Size	Select the paper size you loaded.
Layout	Select Borderless to print your photo without white borders around the edge.
Quality	Select the quality of the copy to be made.
Borderless Expansion	Adjust the margins that are trimmed when you select Borderless . Standard: No margins are printed. Mid: The expansion rate is low. (The margins might be printed.) Min: The expansion rate is lower than Mid . (The margins might be printed.)
Filter	Select B&W to print your photo in black and white.

Making Prints From Your Memory Card

You can print photos from your digital camera by inserting its memory card in your EPSON STYLUS PHOTO RX. If you have a PictBridge - or USB DIRECT-PRINT-enabled camera, you can connect it to the EPSON STYLUS PHOTO RX with a USB cable (➔ page 29).

After inserting your memory card, you can select photos by viewing them on the LCD screen or by printing and scanning an index sheet.

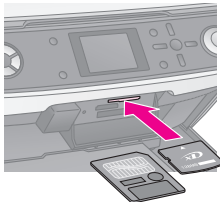


Note:

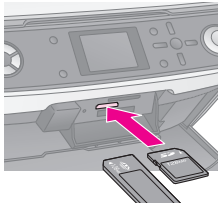




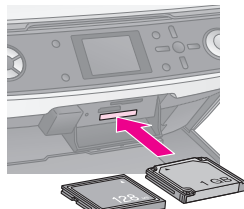


If your camera supports DPOF (Digital Print Order Format), you can pre-select the photos you want to print while the card is still in your camera (➔ page 19).

Inserting a Memory Card

Compatible cards and inserting positions

You can use the following types of memory cards with your EPSON STYLUS PHOTO RX:

Slot	Type of Card
	 Smart Media  xD-Picture Card xD-Picture Card Type M

Slot	Type of Card
	 Memory Stick Memory Stick PRO MagicGate Memory Stick  Memory Stick Duo* Memory Stick PRO Duo* MagicGate Memory Stick Duo*  SD Memory Card MultiMediaCard  miniSD card* *Adapter required
	 Compact Flash  Microdrive

Caution:

Make sure you check which direction the card should be inserted, and if the card needs an adapter make sure you attach the adapter before inserting the card. Otherwise, you may not be able to remove the card from the EPSON STYLUS PHOTO RX.

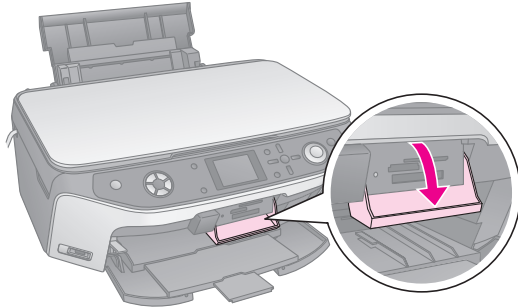
Make sure the photos on your card meet these requirements:

Media format	DCF (Design rule for Camera File system) version 1.0 or 2.0 compliant
File format	JPEG or TIFF, DOS FAT (FAT 12 or 16, one partition) taken with a DCF version 1.0 or 2.0 compliant digital camera Support Exif Versions 2.21
Image size	80 x 80 pixels to 9200 x 9200 pixels
Number of files	Up to 999

Inserting a memory card

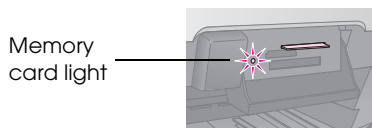
When you are printing directly from a memory card, it is best if the EPSON STYLUS PHOTO RX is not connected to your computer or your computer is turned off. Otherwise, printing may take longer.

1. Turn off your computer or disconnect it from the EPSON STYLUS PHOTO RX.
2. Open the memory card slot cover.



3. Make sure the memory card light (next to the card slots) is off and all the slots are empty. Then insert your card (➡ page 15).

The memory card light flashes, then turns green.



4. Close the memory card slot cover.

Caution:

- ❑ Do not insert more than one card at a time.
- ❑ Do not try to force the card into the slot. Cards will not go all the way in. Forcing a card may damage the EPSON STYLUS PHOTO RX, the memory card, or both.
- ❑ Keep the memory card slot cover closed while a card is inserted. This protects the card and the slot from dust and static; otherwise data on the memory card may be lost, or the EPSON STYLUS PHOTO RX may be damaged.
- ❑ The static charge on some memory cards may cause the EPSON STYLUS PHOTO RX to malfunction.
- ❑ If the card is not correctly formatted, you see a message on the LCD screen. Press the button indicated on the screen to format the card. Any data stored on the card will be erased.

Removing a memory card

1. Make sure all print jobs are finished.
2. Open the memory card slot cover.
3. Make sure the memory card light is not flashing.
4. Remove the memory card by pulling it straight out of its slot.
5. Close the memory card slot cover.

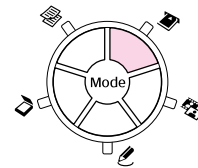
Caution:

- ❑ Wait for the memory card light to stop flashing before removing your card or turning off the EPSON STYLUS PHOTO RX, or you may lose data on the card.
- ❑ If your computer uses Windows 2000 or XP, never turn off the EPSON STYLUS PHOTO RX or disconnect the USB cable when a memory card is inserted; you may lose data on the card. See your on-screen *User's Guide* for details.

Checking the Photos on Your Memory Card

After inserting a memory card, you can view all the photos on your memory card.

1. Press the  **Memory Card** mode button.



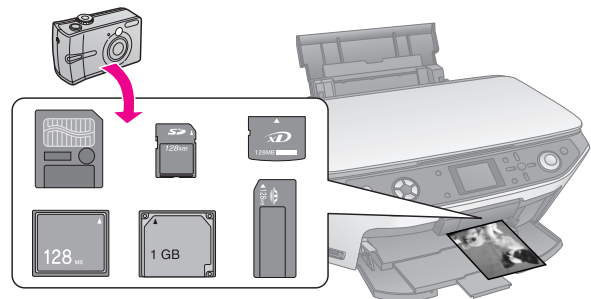
2. Use the ◀ or ▶ button to select **Play Slide Show**.



3. Press **OK** to start the slide show. Your EPSON STYLUS PHOTO RX displays one photo stored on the memory card at a time and advances to the next photo automatically.

If you want to stop the slide show, press **OK**.

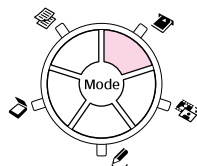
Printing Your Photos





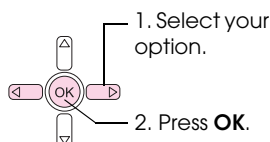
You can make the print settings to match your paper and get just the results you want.

1. Load Epson photo paper.
2. Insert a memory card (➡ page 15).

3. Press the  **Memory Card** mode button.



4. Use the  or  button to select one of the options for choosing your photos, and then press **OK**.


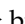
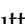
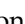

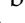


Setting	Description
View and Print Photos	Prints only the photos that you choose.
Print All Photos	Prints all the photos on your card.
Print by Date	Prints photos by the date they were taken.
Print Range of Photos	Prints a sequence of photos, for example 3 through 8.
Print Cropped Photos	Prints only the part of the photo that you crop. (➔ page 22)
Print Index Sheet	Prints thumbnails of the photos on your card and lets you select which ones you want to print. (➔ page 20)


Depending on your selection, you see a screen like this:

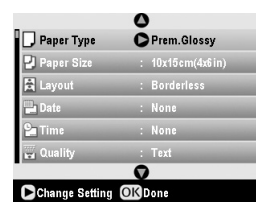


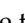

5. Follow the instructions at the bottom of the screen to select the photos you want to print and the number of copies.

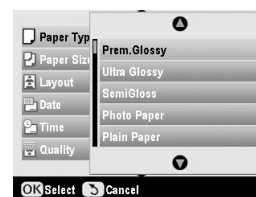
Use the , , , and  buttons to select a photo; use the  or  button to set the number of copies.

6. Press the  **Print Settings** button.

7. Use the  or  button to select the menu item, then press the  button.



8. Use the  or  button to select the setting item. Then press **OK** to apply the new settings.



Setting	Description
Paper Type	Select the setting for the type of paper you loaded (➔ page 4).
Paper Size	Select the paper size you loaded.
Layout	If you want to print without white borders around the edges, choose Borderless . Otherwise choose Border or another layout option as described on page 18.
Date	Prints the date your photo was taken in one of the following formats: yyyy.mm.dd (2005.10.01), mmm.dd.yyyy (Oct.01.2005), dd.mmm.yyyy (01.Oct.2005), or None (no date).
Time	Prints the time your photo was taken in one of the following formats: 12-hour system (8:35), 24-hour system (20:35), or None (no time printed).
Quality	Select the quality of the print to be made.
Filter	Select B&W to print your photo in black and white. Select Sepia to print your photo in sepia.
Auto Correct	P.I.M. uses your camera's PRINT Image Matching or Exif Print settings. PhotoEnhance : adjust the brightness, contrast, and saturation of your photos.
Brightness	Adjust this setting if your prints are too light or too dark.
Contrast	Adjust this setting to increase the contrast.
Sharpness	Adjust this setting to sharpen or soften your prints.

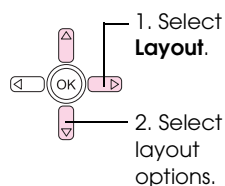
Setting	Description
Saturation	Select from Highest , Higher , Standard , Lower , or Lowest .
Print Info.	Set this to On to print your camera's exposure time (shutter speed), F-stop (aperture), and ISO speed.
Small Image	Set this to On to remove digital noise and improve the quality of low resolution images. Note: This function does not work if Auto Correct is set to None .
Fit to Frame	If your photo is too long or wide to fit inside the available space on your selected layout, part of it is automatically cropped (when this setting is On). Select Off to turn off automatic cropping and leave white space at the edges of the photo.
Bidirectional	Increases the print speed when turned On . Select Off to improve the print quality (but your photos print more slowly).
Borderless Expansion	Adjust the margins that are trimmed when you select Borderless . Standard: No margins are printed. Mid: The expansion rate is low. (The margins might be printed.) Min: The expansion rate is lower than Mid . (The margins might be printed.)
PIF Relation	If each photo has a P.I.F. frame specified for it, select On to print your photos according to the related P.I.F. layouts.


9. Press the **Start** button to print your photos.









If you need to cancel printing, press the **Stop/Clear Settings** button.

Selecting the Layout

These photo layouts are available when making your print settings (➔ page 16). Select **Layout**, press the **►** button, and then use the **▲** or **▼** button to select one of the following layouts.



Setting	Description
 Borderless	Prints your photo all the way to the edges of the paper.

Setting	Description
 Border	Prints your photo with a white margin around the edge.
 Upper Half	Prints your photo on the upper half of the paper.
 2-up	Prints two photos per sheet.
 4-up	Prints four photos per sheet.
 8-up	Prints eight photos per sheet.
 20-up	Prints 20 photos per sheet.
 Index	Prints 80 photos on A4 size paper. Note: When Index is selected, the Auto Correct and Filter functions are not available.
 16-up	Prints 16 photos on one sticker sheet. If you select only one photo, 16 copies of the same photo are printed. If you select two or more, one copy of each is printed in a 16-up layout.

Note:

For most multi-photo layouts, one copy of each selected photo is printed. If you have selected **Print Cropped Photos**, multiple copies of the cropped photo only are printed.

Adjusting the print position on a Photo Stickers sheet


If your printed image is not centered on the Photo Stickers sheet, you can adjust its printing position. If necessary, print a test sample using a blank sheet of plain paper.

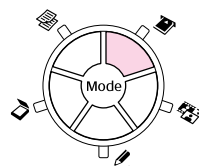
1. Press the **Setup** button.
2. Use the **▲** or **▼** button to select **Stickers Position Up-Down** or **Stickers Position Left-Right**, then press the **►** button.
3. Use the **▲**, **▼**, **◀**, or **▶** buttons to adjust the stickers print positions.
4. Press **OK** when you finish making your settings.

Print Position Options	Description
Stickers Position Up-Down	Select to finely adjust the Photo Stickers sheet position. You can adjust it by 0.1 mm from -2.5 to +2.5 mm up and down.
Stickers Position Left-Right	Select to finely adjust the Photo Stickers sheet position. You can adjust it by 0.1 mm from -2.5 to +2.5 mm left and right.

Using DPOF to select your photos


If your camera supports DPOF (Digital Print Order Format), you can use it to preselect photos and the number of copies to print while the card is still in your camera. See your camera's instruction manual for details.

1. Load photo paper (➡ page 4).
2. Insert a memory card (➡ page 15) containing DPOF data.
3. Press the  **Memory Card** mode button.



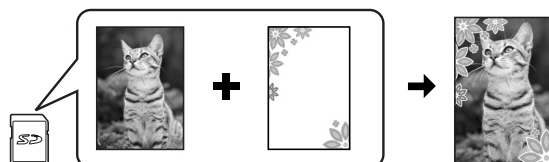
4. Select **View and Print Photos**, **Print All Photos**, or **Print Range of Photos**, and then press **OK**. You see this screen:



5. Select **Yes** and then press **OK**.
6. If necessary, continue with the steps on page 16 to make your print settings.
7. Press the  **Start** button to print your photos.

If you need to cancel printing, press the  **Stop/Clear Settings** button.

Printing with fun frames



You can add colorful frames to your favorite photographs with PRINT Image Framer.

1. Choose from a variety of frames on the CD-ROM that came with your EPSON STYLUS PHOTO RX and save them to a memory card using EPSON PRINT Image Framer Tool. For details, see the software help.

Tip:

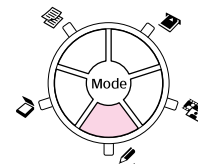
You can also use the PIF DESIGNER software to edit the existing frames or create your own frames. For details, see the software help.

2. Load the appropriate paper for the frame size (➡ page 4).
3. Insert a memory card containing photos and P.I.F. frames.

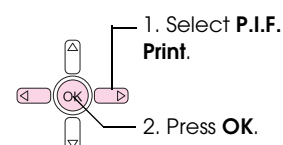
Note:

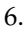
Be sure to save the P.I.F. frames to the memory card using the EPSON PRINT Image Framer Tool; otherwise the P.I.F. file name will not appear on the LCD screen.

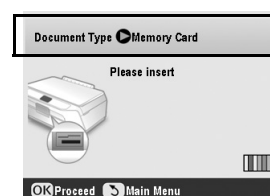
4. Press the  **Specialty Print** mode button.





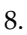

5. Select **P.I.F. Print**, and then press **OK**.


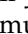




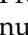
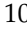
6. Press the  button to select the **Document Type** setting at the top of the screen. If you want to print a photo from your memory card with a P.I.F. frame, select **Memory Card**. If you want to print a photo with a P.I.F. frame, select **Photo**, and then press **OK**.



Select the **Document Type**

7. Press **OK** again, and then use the  or  button to select the P.I.F. frame you want to print, and then press **OK**.
8. Use the  or  button to select the photos you want to print, and then press **OK**.

If you select a P.I.F. frame that can contain multiple photos, use the  or  button to select the photo, and then use the  button to set the photo. A light blue frame appears around the selected photo.

9. Press **OK** to confirm the layout, then set the number of copies using the  or  button.
10. Check the print settings. If necessary, press the  **Print Settings** button and change the settings as described in step 8 from "Printing Your Photos" on page 16. Then press **OK** to apply the new setting.

Note:

The EPSON STYLUS PHOTO RX selects the paper size automatically depending on the frame you choose. Also, you cannot adjust **Borderless Expansion** with borderless P.I.F. frame.

11. Press the **Start** button to start printing.

Note:

If you specified a frame for each photo, set **PIF Relation** to **On** under Print Settings in **Memory Card** mode before you print.

Restoring default settings

If you want to reset the print and copy settings to their original factory defaults, follow these steps:

1. Press the **Setup** button.
2. Use the **▲** or **▼** button to select **Restore to Factory Settings**.
3. Press the **►** button, then press **OK** to restore the settings.

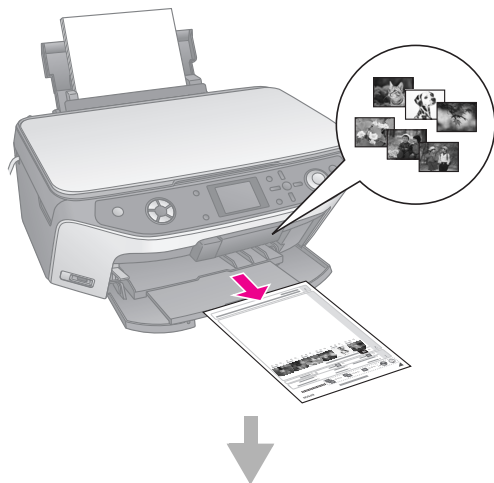
Printing From an Index Sheet

Overview of printing from an index sheet

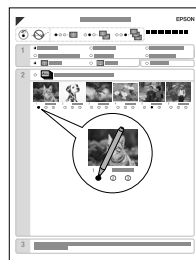
An index sheet gives you a thumbnail printout of the photos on your memory card and lets you select which ones you want to print. You can use the index sheet to make borderless prints on 10 × 15 cm (4 × 6 in.), 13 × 18 cm (5 × 7 in.), and A4 size paper.

Use plain paper to print out the index sheet. When you are ready to print your photos, you will need to load one of the Epson photo papers.

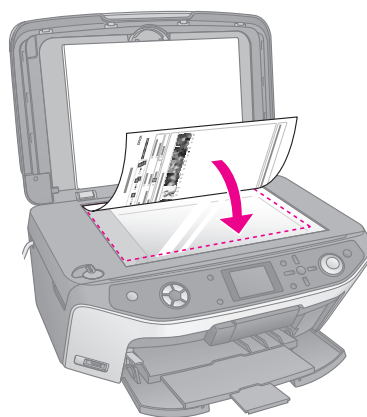
Printing the index sheet.



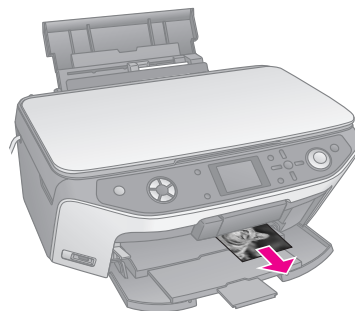
Selecting photos from the index sheet.



Scanning the index sheet.

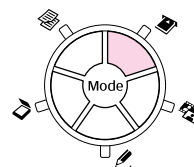


Printing the selected photos.



Printing an index sheet

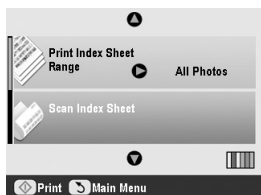
1. Load several sheets of plain paper. (If there are more than 30 photos on your memory card, you will need more than one sheet to print the index.)
2. Insert a memory card (► page 15).
3. Press the **Memory Card** mode button.



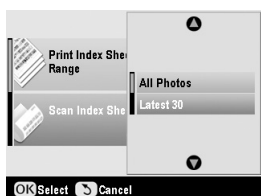
4. Select **Print Index Sheet**, and then press **OK**.



5. Select **Print Index Sheet Range**.



6. Press the **►** button and then use the **▲** or **▼** button to select the range of photos you want to print on the index sheet. Then press **OK**.



Range	Description
All Photos	Prints all the photos stored on a memory card.
Latest 30	Prints 30 photos from the latest one in order of the file name.
Latest 60	Prints 60 photos from the latest one in order of the file name.
Latest 90	Prints 90 photos from the latest one in order of the file name.

7. Press the **◆ Start** button to print the index sheet.

Note:

If you need to cancel printing, press the **⊙ Stop/Clear Settings** button. If there are a lot of photos on your card, allow time for them to be processed before printing begins.

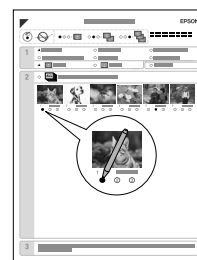
Selecting photos from the index sheet

On the index sheet, use a dark pen or pencil to fill in the ovals and make your selections.

OK:



No
good:



1. In section 1, select the size and type of paper you want to print on as listed below. Fill in the oval to the left of your selection.

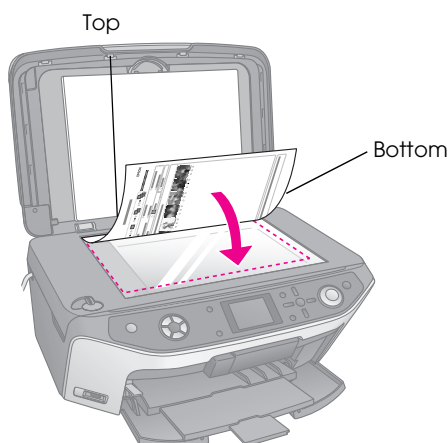
If you want to print on this paper ...	Choose one of these options
Epson Matte Paper Heavyweight	Matte - A4
Epson Premium Glossy Photo Paper	Prem./Ultra Glossy - 10 × 15 cm (4 × 6 in) Prem./Ultra Glossy - 13 × 18 cm (5 × 7 in) Prem./Ultra Glossy - A4
Epson Ultra Glossy Photo Paper	
Epson Premium Semigloss Photo Paper	SemiGloss - 10 × 15 cm (4 × 6 in) SemiGloss - A4

2. Select whether to print your photos with or without borders.
3. Fill in the **Date** oval to include an optional data stamp.
4. In section 2, select **All** to print one copy of each photo, or fill in the number beneath each photo to select 1, 2, or 3 copies.

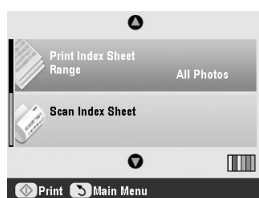
Scanning the index sheet and printing the selected photos

1. Load the type of paper you selected. Load enough sheets for the number of photos you want to print.

- Place the index sheet face-down on the document table, so that the top edge of the sheet is aligned with the left edge of the document table.



- Close the document cover.
- On the LCD screen, make sure **Scan Index Sheet** is selected, then press the **Start** button. The sheet is scanned and your photos are printed.

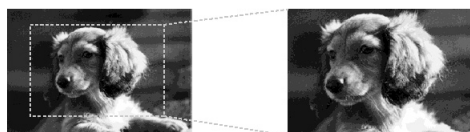


If you need to cancel printing, press the **Stop/Clear Settings** button.

Note:

If you have more than one index sheet, wait for the EPSON STYLUS PHOTO RX to finish printing. Then repeat the steps above to scan and print from each additional sheet.

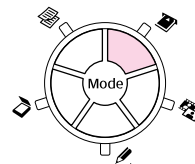
Cropping a Photo



If you have a photo with a subject in it you want to emphasize, you can crop out the rest of the photo. Then you can print just the main subject by itself.

- Load the type of paper you want to print with (➔ page 4).
- Insert a memory card (➔ page 15).

- Press the **Memory Card** mode button.



- Use the **◀** or **▶** button to select **Print Cropped Photos**, then press **OK**.



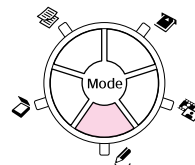
- Use the **◀** or **▶** button to select the photo you want to crop, then press **OK**.
- Adjust the cropping area and start printing as described on page 10.

Printing a CD/DVD

You can use your EPSON STYLUS PHOTORX to print photos from your memory card directly onto a CD/DVD without using your computer.

You can further enhance your CD/DVD collection by making your own jewel case insert (➔ page 24).

- Place your CD/DVD on the CD/DVD tray and insert it into the EPSON STYLUS PHOTO RX (➔ page 6).
- Insert a memory card (➔ page 15).
- Press the **Specialty Print** mode button.



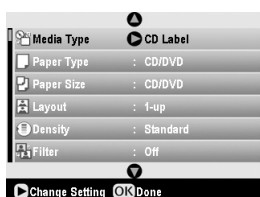
- Use the **◀** or **▶** button to select **CD/DVD Print**, then press **OK**.



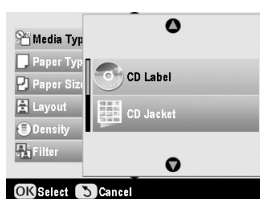
You see your memory card's first photo displayed on the screen:



5. Press the Print Settings button.
6. Use the button to select the menu item, then press the button.



7. Use the or button to select the setting item. Then press **OK** to apply the new settings.



Setting	Description
Media Type	Select CD Label to print photos on a CD/DVD label.
Paper Type	Select CD/DVD to print photos on a CD/DVD label directly. If you want to check the print output before, select Plain Paper .
Paper Size	Select CD/DVD .
Layout	Select the layout option as described in the next section.

8. When you finish making Print Settings press **OK**, and then use the or button to select a photo; use the or button to set the number of copies.

Note:

If you choose **4-up** as the layout setting, but you do not select four photos, a blank space is left for any missing photos.

9. Press the **Start** button. Your CD/DVD is printed.

If you need to cancel printing, press the **Stop/Clear Settings** button.

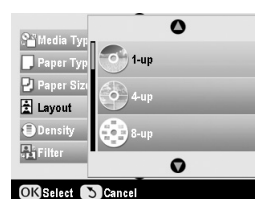
10. If you want to print another CD/DVD, select **Yes** on the LCD screen after printing has finished.



11. When printing is complete, pull the tray out of the EPSON STYLUS PHOTO RX (➡ page 7) and let the CD/DVD dry fully before handling it.
12. When you finish printing CD/DVDs, raise the tray lever to return the front tray to its former position (➡ page 7).

Selecting the Layout


These photo layouts are available when printing your photos onto a CD/DVD (➡ page 22). Press the Print Settings button and select **Layout**. Press the button and then use the or button to select one of the following settings. Press **OK** to apply the new setting.

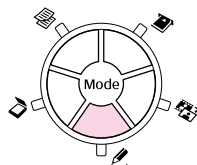


Setting	Description
1-up	Prints one photo on the CD/DVD, centered on the hole in the middle of the disk.
4-up	Prints four photos on the CD/DVD, with one image in each of the four quarters.
8-up	Prints eight photos on the CD/DVD, arranged in a circle around the outer edge of the disk.
12-up	Prints 12 photos on the CD/DVD, arranged in a circle around the outer edge of the disk.

Creating a Jewel Case Insert

You can use a photo from your camera's memory card to print a jewel case insert that matches your printed CD/DVD.

1. Load A4 size paper (➔ page 4).
2. Insert a memory card (➔ page 15).
3. Press the  **Specialty Print** mode button.



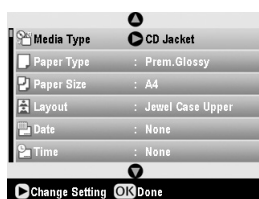
4. Use the ◀ or ▶ button to select **CD/DVD Print**, then press **OK**.




You see your memory card's first photo displayed on the screen:



5. Press the  **Print Settings** button. Select **CD Jacket** as the **Media Type** to print a CD/DVD jewel case insert.



6. Use the ▲, ▼, ◀, and ▶ buttons to change other settings if necessary, then press **OK**.
7. Use the ◀ or ▶ button to select a photo; use the ▲ or ▼ button to set the number of copies.
8. Press the  **Start** button to start printing.

If you need to cancel printing, press the  **Stop/Clear Settings** button.

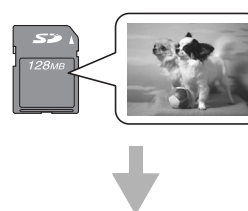
Printing Using a Combo Printing Sheet

Overview of printing using a Combo Printing Sheet

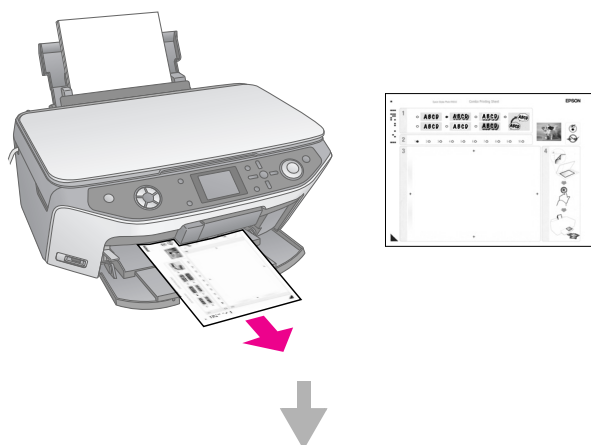
You can easily add personal, handwritten messages or drawings to your favorite photo using the Combo Printing Sheet.

Use plain paper to print out the template (Combo Printing Sheet). When you are ready to print your photo with handwritten drawings, you will need to load one of the 10 × 15 cm (4 × 6 in.) Epson photo papers.

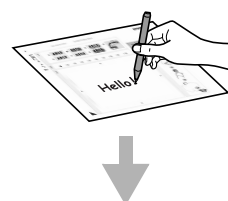
Selecting a photo on the memory card.



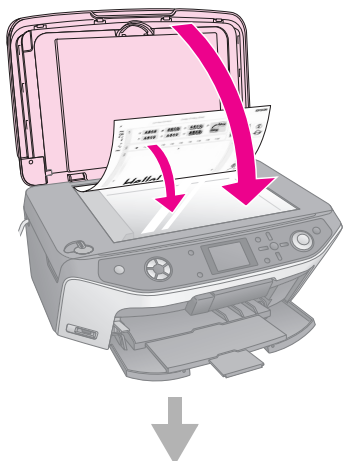
Printing a template.



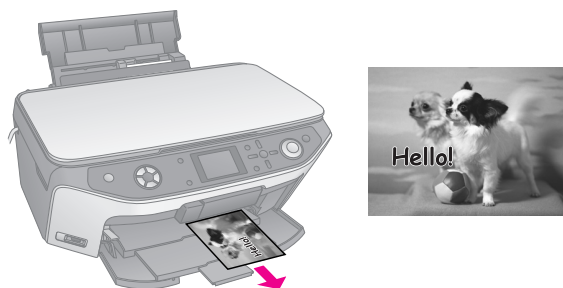
Writing a message or drawing on the template.




Scanning the template.

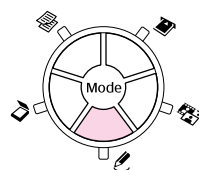


Printing the photo with handwritten drawings.



Selecting a photo and printing a template

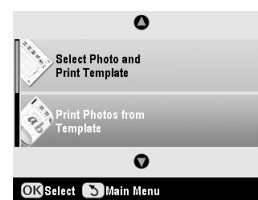
1. Load A4 plain paper (➡ page 4).
2. Insert a memory card (➡ page 15).
3. Press the  **Specialty Print** mode button.



4. Use the ◀ or ▶ button to choose **Combo Printing Sheet**, then press **OK**.






5. Choose **Select Photo and Print Template**, then press **OK**.





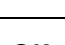
6. Select **Paper Type** and press the ▶ button. Then use the ▲ or ▼ button to select the type of paper you want to print on as listed below, and then press **OK**.

If you want to print on this paper...	Choose this option
Epson Premium Glossy Photo Paper	Prem.Glossy
Epson Premium Semigloss Photo Paper	SemiGloss
Epson Ultra Glossy Photo Paper	Ultra Glossy

7. Select **Frame** and press the ▶ button. Then use the ▲ or ▼ button to select one of the following settings, and then press **OK**.

Frame	Description
Standard 	No frames.
Ellipse 	Prints a photo with an elliptical frame.
Ellipse-shading 	Prints a photo with a shaded elliptical frame.

8. Select **Layout** and press the ▶ button. Then use the ▲ or ▼ button to select one of the following settings, and then press **OK**.

Layout	Description
	Prints handwritten drawings on the lower half and a photo on the upper half of the paper.
	Prints a photo on the paper.
	Prints handwritten drawings on the upper half and a photo on the lower half of the paper.

9. Press **OK**.

- Use the ◀ or ▶ button to select the photo you want to use.
- Press the ♦ **Start** button to start printing.

If you need to cancel printing, press the
⊗ **Stop/Clear Settings** button.

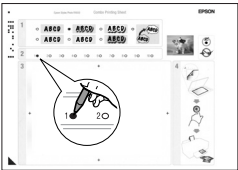
Writing a message or drawing on the template

On the template, use a dark pen or pencil to fill in the ovals and make your selections.

OK:



No good:

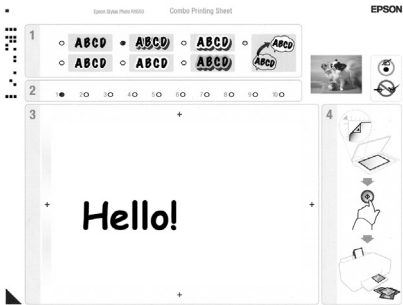


- In section 1, select the type of handwritten drawings you want to use. Fill in the oval to the left of your selection.

Handwritten Drawings	Descriptions
	Your message or drawing is printed with no border.
	Your message or drawing is printed with a thin border.
	Your message or drawing is printed with a thin border and a shadow.
	Your message or drawing is printed with a thick border.
	Your message or drawing is printed with a thick border and a shadow.
	Your message or drawing is printed with a gold border and a shadow.
	Your message or drawing is printed with a speech balloon, and the inside of the balloon becomes white.

- In section 2, select the number of copies you want to print from 1 to 10. Fill in the oval to the right of your selection.

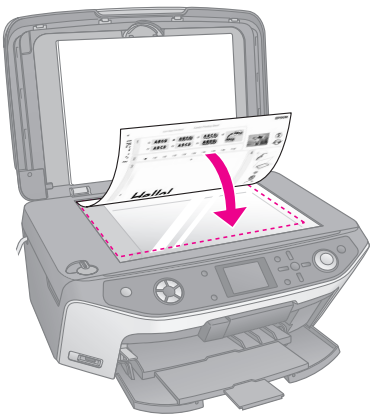
- In section 3, write the message or drawing you want to add to the photo using a dark pen. The handwriting area differs depending on the layout you choose.



Layout	Handwriting Area
	Write or draw in the white box on the right.
	Write or draw on the photo.
	Write or draw in the white box on the left.

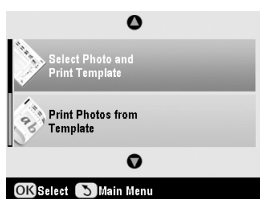
Scanning the template and printing the photo

- Load 10 × 15 cm (4 × 6 in.) Epson photo paper you selected. Load enough sheets for the number of photos you want to print.
- Place the template face-down on the document table, so that the triangle mark on the bottom left of the template is aligned with the top left corner of the document table.



- Close the document cover.

4. Make sure **Print Photos from Template** is highlighted, then press the **Start** button. The template is scanned and your photos are printed.



If you need to cancel printing, press the **Stop/Clear Settings** button.

Printing Your Stored Photos

You can copy pictures from your memory card to a USB storage device, such as a Zip drive, recordable CD-R/RW drive (with a USB connection), MO (Magneto-Optical) drive, or USB flash drive. This lets you delete the photos on your memory card and reuse it without losing your originals.

If you use a CD-ROM or Zip drive, it must provide its own power (from an external power supply or adapter).

Note:

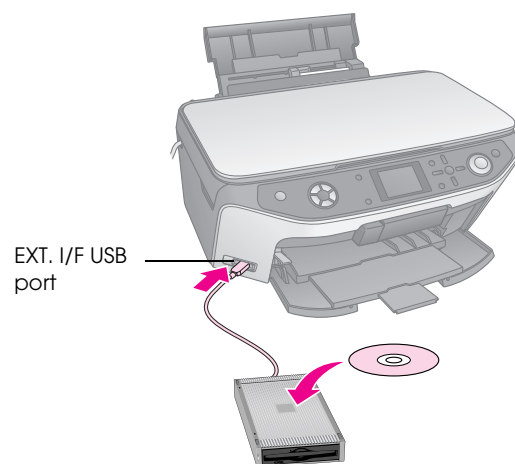
Not all USB devices are supported. For details, contact your regional Customer Support.

Once your files are copied, you can print them at any time from the storage device, as described on page 27.

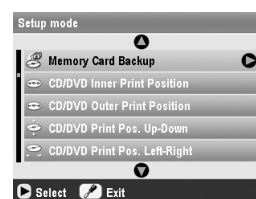
Copying photos to a USB drive

1. If the EPSON STYLUS PHOTO RX is connected to your computer, unplug the USB cable or turn off your computer.
2. Make sure the EPSON STYLUS PHOTO RX is turned on and the memory card containing your photos is inserted in it.

3. Connect a USB cable from your storage drive to the **EXT. I/F USB** port on the front of the EPSON STYLUS PHOTO RX. (If you are using a thumb drive, plug it in directly.) Then, insert your media into the storage drive.



4. Press the **Setup** button.
5. Use the **▲** or **▼** button to select **Memory Card Backup**, then press the **►** button.



6. Press **OK**.
7. Press **OK** again to start the backup procedure. You may have to follow additional instructions on the LCD screen.

All the photos on your card are copied to your connected storage device. Depending on how many photos there are, this may take several minutes.

8. When you are done copying photos, press **OK** and remove the card as described on page 16.

Note:

When backing up photos to a CD-R/RW, the EPSON STYLUS PHOTO RX creates a folder for each backup session. You can store multiple backup sessions on a CD-R/RW.

Printing your photos

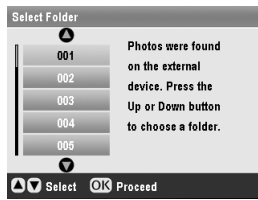
Once you have copied photos to your storage drive, you can print them by following these steps.

1. Connect your drive to the EPSON STYLUS PHOTO RX as described on page 27.

Note:

Remove any memory cards from the EPSON STYLUS PHOTO RX. The EPSON STYLUS PHOTO RX does not recognize peripheral devices when a memory card is inserted.

- When you see this screen, use the ▲ or ▼ button to select which folder to print from, then press **OK**.

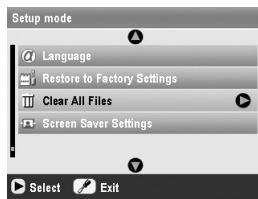


- Press the **Memory Card** mode button, then follow the same steps as you would to print from your camera's memory card (➔ page 16).

Deleting all the photos on your memory card

If you want to delete all the photos on your memory card, follow these steps.

- Press the **Setup** button.
- Use the ▲ or ▼ button to select **Clear All Files**.



- Press the ► button, and then press **OK**.
- Press **OK** again to start clearing files.

All the photos on your card are cleared.
Depending on how many photos there are, this may take several minutes.

- When you are done clearing files, press **OK**.

Making Prints From Your Digital Camera

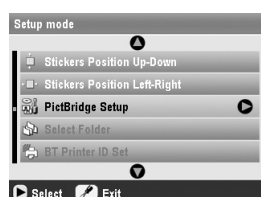
PictBridge and USB DIRECT-PRINT let you print your photos by connecting your digital camera directly to the EPSON STYLUS PHOTO RX.

Connecting and Printing

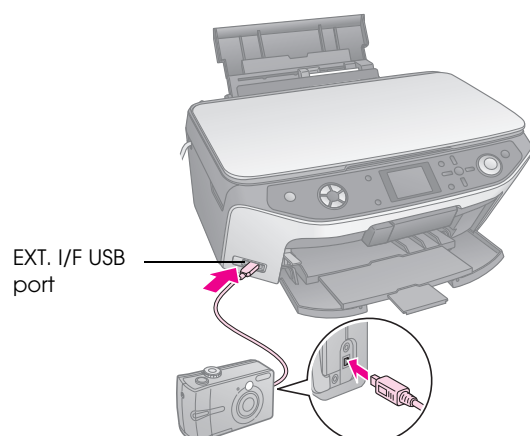
Make sure your camera is compatible with PictBridge or USB DIRECT-PRINT and your photos meet the following requirements.

File format	JPEG
Resolution	80 × 80 pixels to 9200 × 9200 pixels

1. Remove any memory cards from the EPSON STYLUS PHOTO RX. (If you leave a card inserted, photos will be read from it instead of the card in your camera.)
2. Press the **Setup** button.
3. Use the **▲** or **▼** button to select **PictBridge Setup**, then press the **▶** button.



4. Use the LCD screen to select the print settings (➡ page 17).
5. When you finish selecting your print settings, press **OK**.
6. Connect the USB cable that came with your camera to the **EXT. I/F USB** port on the front of the EPSON STYLUS PHOTO RX.



7. Load the type of paper you want to print on (➡ page 4).
8. Make sure your camera is turned on.
9. Use your camera to select the photos you want to print, adjust any necessary settings, and print your photos. See your camera's manual for details.

Note:

- ❑ If your camera is not compatible with PictBridge or USB DIRECT-PRINT, you will see a message saying that the connected device cannot be used. Epson cannot guarantee the compatibility of any cameras.
- ❑ Some of the settings on your digital camera may not be reflected in the output.

Making Prints From Slides or Negatives

You can use the film holder that came with your EPSON STYLUS PHOTO RX to scan 35-mm slides and strips of negatives or positive film. You can then print directly from the scanned images.

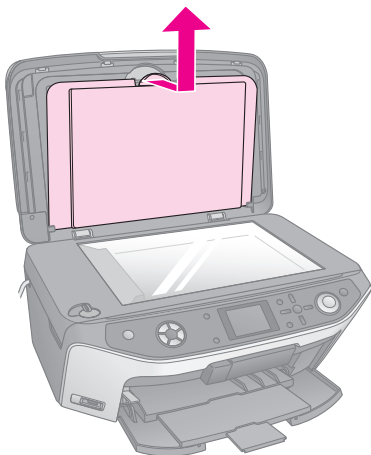
To get professional results that look and feel like traditional photos, try one of the special Epson photo papers listed on page 4.

Caution:

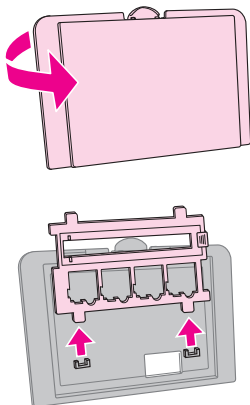
Make sure you handle film or negative strips by the edges or wear gloves. Touching the film surface with bare hands can leave fingerprints or other marks on the film.

Removing the Document Mat and Film Holder

1. Open the document cover and remove the document mat.



2. If you have stored the film holder on the back of the document mat, turn over the document mat and take out the holder.

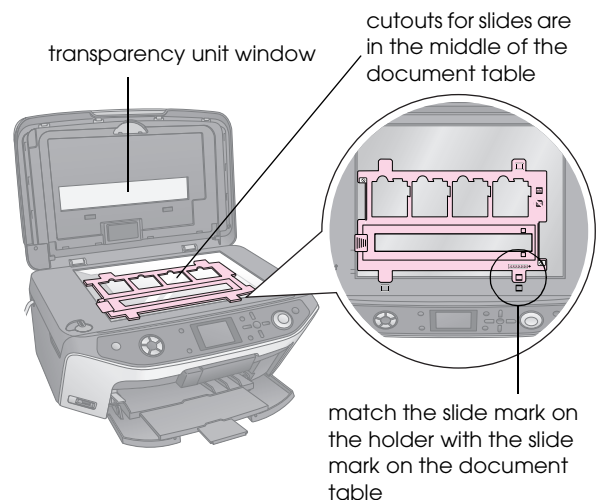


3. Place your film or slides in the holder as described on the following pages.

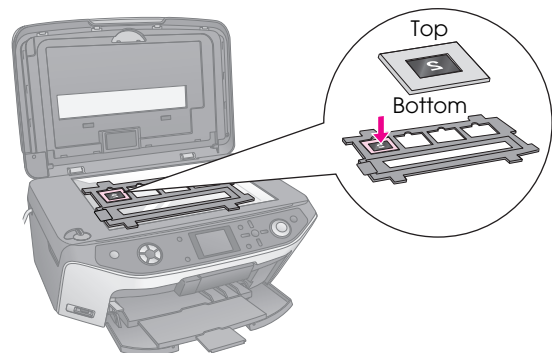
Placing 35-mm Slides in the Holder

1. Fit the holder's tabs into the two small holes at the front edge of the document table.

Make sure the cutouts for 35-mm slides are in the middle of the document table (not at the front edge) to align them with the transparency unit window when you close the cover.



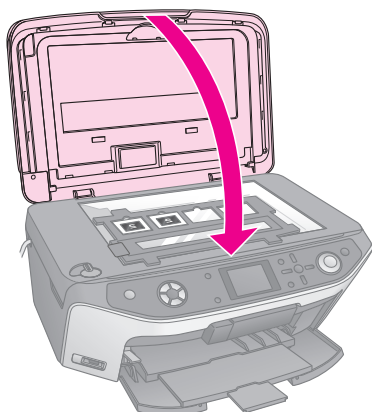
2. Place your slides in the film holder as shown.



Note:

- ❑ The photos should be mirror-imaged when viewed from overhead. (The shinier side faces down; the duller side faces up.)
- ❑ Make sure you do not press too hard on the document table.

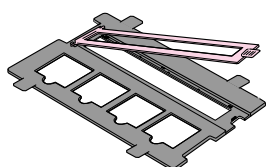
3. Close the document cover completely.



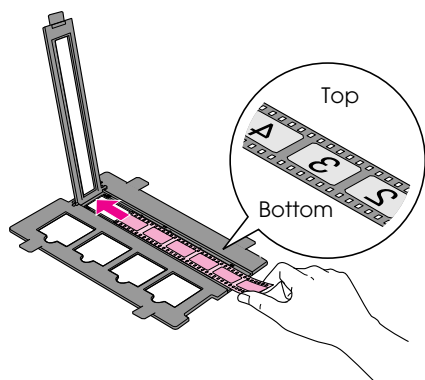
Continue with the steps in “Printing Your Photos” on page 31 to scan and print your photos.

Placing 35-mm Film Strips in the Holder

1. Open the film strip cover.



2. Slide your negative or positive film strip into the holder, under the tabs.

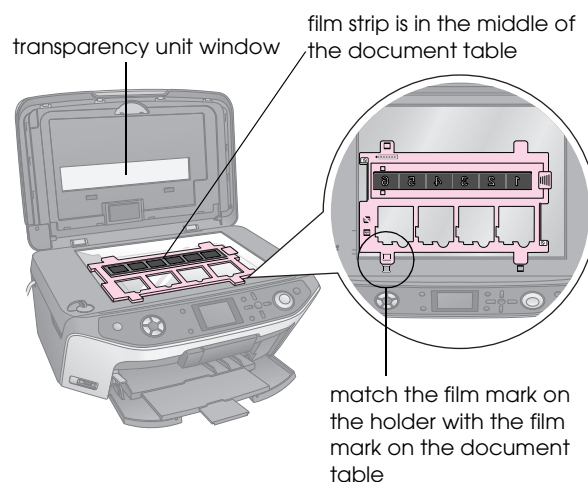


Note:

The photos should be mirror-imaged when viewed from overhead. (The shinier side faces down; the duller side faces up.)

3. Close the film strip cover.
4. Fit the holder's tabs into the two small holes at the front edge of the document table.

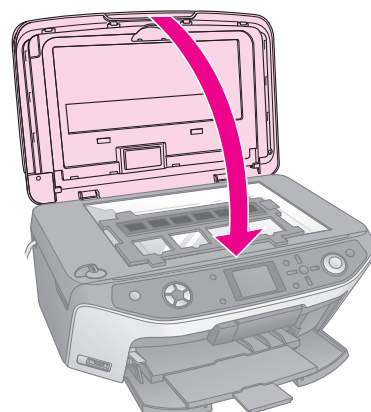
Make sure the film strip is in the middle of the document table (not at the front edge) to align it with the transparency unit window when you close the cover.



Caution:

Make sure you do not press too hard on the document table.

5. Close the document cover.



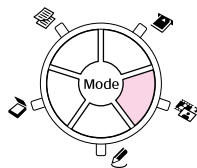
Continue with the steps in the next section to scan and print your photos.

Printing Your Photos

Once you have placed your slides, negatives, or film strips on the document table, you can view and select the photos you want to print from the LCD screen. You can choose from various sizes and types of Epson paper.

1. Load the type of paper you want to print on (➔ page 4).

- Press the  **Slide/Negative** mode button.






- Select the film type.

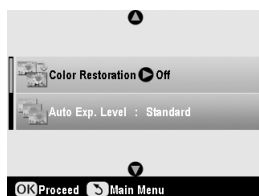


If you are scanning slides, select **Color Positive(slide)**. If you are scanning a film strip, select one of these options:

- **Color Negative** (used in most cases)
- **BW Negative**
- **Color Positive(strip)**


Press **OK** after making your selection.

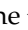
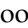
- Use the  or  button to select **Color Restoration** or **Auto Exp. Level**, then press the  button to select the setting item.

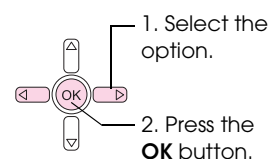


Setting	Description
Color Restoration	Select On to restore the original color of faded slides, negatives, or film.
Auto Exp. Level	Lower: Decrease exposure level Standard: Standard exposure level Higher: Increase exposure level

- Press **OK**. The EPSON STYLUS PHOTO RX starts previewing your slides.
- Press **OK** if the photo is previewed the way you want it.

If you want to scan again, press the  Back button.

- Use the  or  button to select one of the options for choosing your photos, then press **OK**.




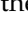

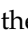


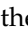

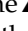
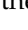
Setting	Description
View and Print Photos	Prints only the photos that you choose.
Print All	Prints all the photos.
Print Range	Prints a sequence of photos, for example 3 through 8.
Print Crop	Prints only the part of the photo that you crop (➡ page 33).
Save to Memory Card	Save the photos to a memory card (➡ page 35).
Rescan	Scan the slides, film, or negative one more time.

Depending on your selection, you see a screen like this:



- Follow the instructions at the bottom of the screen to select the photos you want to print and the number of copies.

Use the , , , and  buttons to select a photo; use the  or  button to set the number of copies.

- Press the  Print Settings button.
- Use the  or  button to select the menu item, then press the  button.



11. Use the ▲ or ▼ button to select the setting item. Then press **OK** to apply the new setting.



Setting	Description
Paper Type	Select the setting for the type of paper you loaded (➡ page 4).
Paper Size	Select the paper size you loaded.
Layout	If you want to print without white borders around the edges, choose Borderless . Otherwise choose Border .
Quality	Select the quality of the print to be made.
Borderless Expansion	Adjust the margins that are trimmed when you select Borderless . Standard : No margins are printed. Mid : The expansion rate is low. (The margins might be printed.) Min : The expansion rate is lower than Mid . (The margins might be printed.)
Filter	Select B&W to print your photo in black and white.

12. Press **OK** again, and then press the ⬠ **Start** button to start printing.

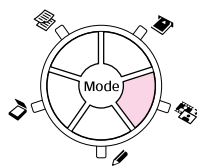
If you need to cancel printing, press the ⬢ **Stop/Clear Settings** button.

Restoring color in slides and negatives

If you have slides or negatives that have become faded over time, you can bring them back to life with Color Restoration.

To restore color in faded slides or negatives, place your slides or negatives on the document table as described on page 30 or 31 and adjust the settings.

1. Press the 📷 **Slide/Negative** mode button.



2. Select the film type.

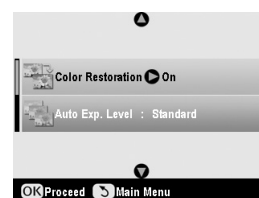


If you are scanning slides, select **Color Positive(slide)**. If you are scanning a film strip, select one of these options:

- **Color Negative** (used in most cases)
- **BW Negative**
- **Color Positive(strip)**

Press **OK** after making your selection.

3. Make sure **Color Restoration** is set to **On**.



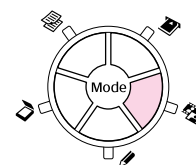
4. Continue from step 5 on page 32 to print from slides, negatives, or film.

Cropping a photo



You can crop and enlarge photos when you print from slides, negatives, or film. Before you start, place your slides, negatives, or film on the document table as described on page 30 or 31 and load the paper you want to print on (➡ page 4).

1. Press the 📷 **Slide/Negative** mode button.



2. Select the film type.



If you are scanning slides, select **Color Positive(slide)**. If you are scanning a film strip, select one of these options:

- **Color Negative** (used in most cases)
- **BW Negative**
- **Color Positive(strip)**

Press **OK** after making your selection.

3. If necessary, adjust **Color Restoration** and **Auto Exp. Level**.
4. Press **OK**. The EPSON STYLUS PHOTO RX starts previewing your slides.
5. Press **OK** if the photo is previewed the way you want.

If you want to scan again, press the **3 Back** button.

6. Use the **◀** or **▶** button to select **Print Crop**, and then press **OK**.



7. Use the **◀** or **▶** button to select the photo you want to crop, then press **OK**.
8. Adjust the cropping area and start printing as described on page 10.

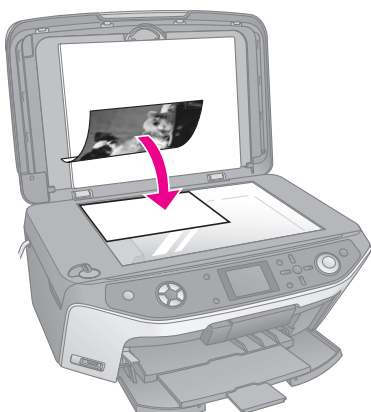
Scanning to a Memory Card

You can use your EPSON STYLUS PHOTO RX to save scans of photos, film, and slides to your memory card. You can also scan to your computer instead of a memory card (see the instructions in your on-screen *User's Guide*).

Scanning a Photo

After inserting a memory card (➔ page 15), follow these steps to scan a photo to the card and save it in JPEG format.

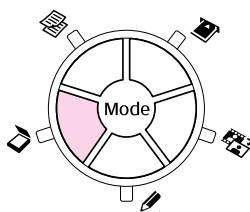
1. Open the document cover.
2. Place your photo face-down on the document table in the upper-left corner, as shown.



Note:

If the edges of the scan are cropped off, move the photo away from the corner slightly.

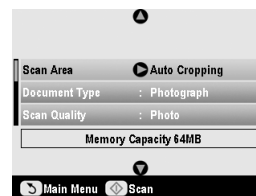
3. Close the document cover.
4. Press the ➤ **Scan** mode button.



5. Use the ◀ or ▶ button to select **Save to Memory Card**, then press **OK**.



6. Use the ▲, ▼, ◀, and ▶ buttons to select the following options:



Setting	Description
Scan Area	If the edges of the photo are light in color, select Max Area . Otherwise, select Auto Cropping .
Document Type	Select Photograph .
Scan Quality	Select Photo .

7. Press the ◆ **Start** button. The photo is scanned and saved to the **EPSCAN** folder on your memory card.

When scanning is finished, you see a confirmation screen. Note the name given to your image and its location on the card.

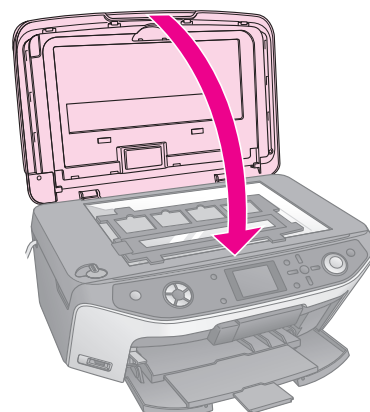
Caution:

- ❑ Never open the scanner unit while scanning; otherwise, you may damage the EPSON STYLUS PHOTO RX.
- ❑ Do not remove the card or turn off the EPSON STYLUS PHOTO RX while the memory card light is flashing, or you may lose data.

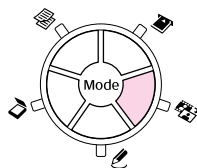
Scanning Slides or Film

After inserting a memory card (➔ page 15), you can scan slides or film to the card and save your photos in JPEG format.

1. Place your slides or film on the document table as described on page 30 or 31.
2. Close the document cover.



- Press the  **Slide/Negative** mode button.



- Select the film type.




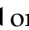

If you are scanning slides, select **Color Positive(slide)**. If you are scanning a film strip, select one of these options:

- **Color Negative** (used in most cases)
- **BW Negative**
- **Color Positive(strip)**

Press **OK** after making your selection.

- If necessary, adjust **Color Restoration** and **Auto Exp. Level**.
- Press **OK**. The EPSON STYLUS PHOTO RX starts previewing your slides.
- Press **OK** if the photos are previewed the way you want.

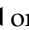

If you want to scan again, press the  Back button.

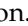

- Use the  or  button to select **Save to Memory Card**, then press **OK**.



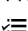

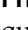

The EPSON STYLUS PHOTO RX displays your first photo on its screen.

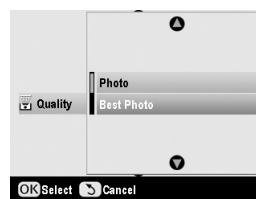



- Use the  or  button to preview each of your photos.

- While a photo is displayed, you can select it by placing a checkmark in the box in the top right corner by using the  or  button.



- When you finish selecting photos, press the  Print Settings button and then press the  button. Then use the  or  button to select **Photo** (for good quality), or **Best Photo** (for best quality) as the **Quality** option, and then press **OK**.



- Press **OK** again to apply the new setting.
- Press the  **Start** button. The photo is scanned and saved to the **EPSCAN** folder on your memory card.

When scanning is finished, you see a confirmation screen. Note the name given to your image and the location on the card.

Caution:


Do not remove the card or turn off the EPSON STYLUS PHOTO RX while the memory card light is flashing, or you may lose data.

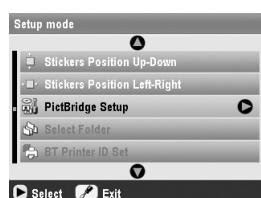
Making Prints From Your Mobile Phone

If your mobile phone has an infrared port, you can send your JPEG photo data from your phone to the EPSON STYLUS PHOTO RX and print it.

Printing Snapshots

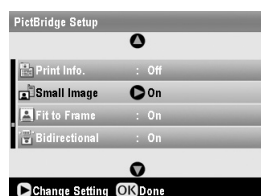
Make sure your mobile phone allows you to send photo data via infrared.

1. Load the type of paper you want to print on (➡ page 4).
2. Press the  **Setup** button.
3. Use the **▲** or **▼** button to select **PictBridge Setup**, then press the **▶** button.



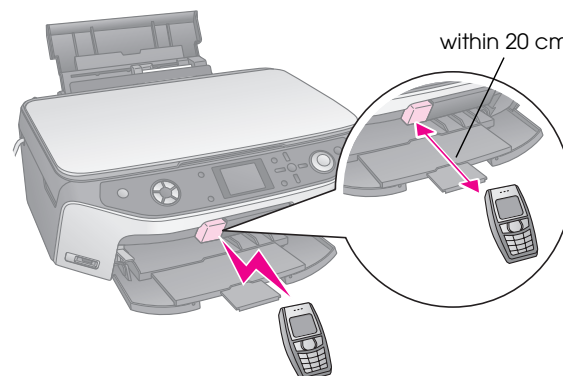
4. Use the LCD screen to select the print settings (➡ page 17).

Make sure the **Small Image** setting is set to **On**, as shown.



5. When you have finished selecting your print settings, press **OK**.
6. Aim your phone's infrared port at the infrared port on the EPSON STYLUS PHOTO RX and send your photo data. See your mobile phone's manual for details.

The EPSON STYLUS PHOTO RX starts printing after it receives the data properly.



Note:

- ☐ The infrared port can receive data from up to 20 cm away.
- ☐ You can send up to 10 pieces of image data (the maximum total image size is 3 M), including documents that are being printed.
- ☐ You may not be able to transmit your data if direct sunlight or fluorescent light is shining onto either of the infrared ports.

Infrared Specification

Version	Compliant to the IrDA® Standard specifications. (Ver.1.3 Low Power)
Maximum data rate	Up to 4 M bit/s
Minimum link distance upper limit	0.2 meters

Maintaining and Transporting

Replacing Ink Cartridges

When you print with low or empty ink cartridges, you see a message on the LCD screen. Check this icon in the lower-right corner of the screen to see which cartridge is low or empty.



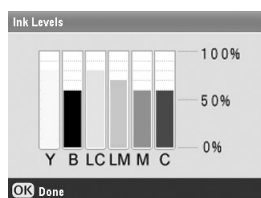
When a cartridge is more than six months old, print quality may decline. If necessary, try cleaning the print head as described on page 39. If printouts still do not look their best, you may need to replace the cartridge.

Checking the ink supply

To check your ink supply, do the following:

1. Press the **Setup** button.
2. Use the **▲** or **▼** button to select **Ink Levels**, then press the **▶** button.

You see a graphic showing the amount of ink available in each cartridge:



Y (Yellow), **B** (Black), **LC** (Light Cyan), **LM** (Light Magenta), **M** (Magenta), and **C** (Cyan).

3. When you are done checking the ink levels, press **OK**.

When your ink starts getting low, make sure you have replacement cartridges available. You cannot print if a cartridge is empty.

Purchasing ink cartridges

Use these Epson ink cartridges within six months of installing them and before the expiration date.

Color	Part number
Black	T0481
Cyan	T0482
Magenta	T0483

Color	Part number
Yellow	T0484
Light Cyan	T0485
Light Magenta	T0486

Caution:

To ensure good results, use genuine Epson ink cartridges and do not refill them. Other products not manufactured by Epson may cause damage that is not covered by Epson's warranties, and under certain circumstances, may cause your EPSON STYLUS PHOTO RX to behave erratically.

Ink cartridge precautions

Warning:

If ink gets on your hands, wash them thoroughly with soap and water. If ink gets in your eyes, flush them immediately with water. If you still have discomfort or vision problems, see a doctor immediately.

Caution:

- ☐ To avoid damaging the EPSON STYLUS PHOTO RX, never move the print head by hand.
- ☐ When an ink cartridge is empty, you cannot continue copying or printing even if the other cartridges still contain ink.
- ☐ Leave the empty cartridge installed in the EPSON STYLUS PHOTO RX until you have obtained a replacement. Otherwise the ink remaining in the print head nozzles may dry out.
- ☐ An IC chip on each ink cartridge accurately monitors the amount of ink used from the cartridge. Even if a cartridge is removed and then inserted again, all of its ink can be used. However, some ink is consumed each time the cartridge is inserted because the EPSON STYLUS PHOTO RX automatically checks its reliability.

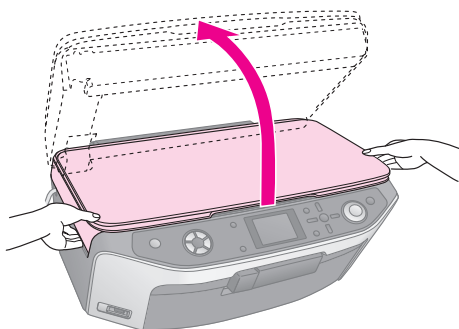
Removing and installing ink cartridges

Make sure you have a new ink cartridge before you begin. Once you start replacing a cartridge, you must complete all the steps in one session.

1. Do one of the following:

- **If an ink cartridge is empty:**
Look at the message on the LCD screen to find out which cartridge is empty, then press **OK**.
- **If an ink cartridge is low:**
Look at the icon in the lower right corner of the LCD screen to see which cartridge is low or check the ink levels as described on page 38. Then press the **Setup** button. Use the **▲** or **▼** button to select **Change Ink Cartridge**, then press the **▶** button. At the confirmation screen, press the **Start** button.

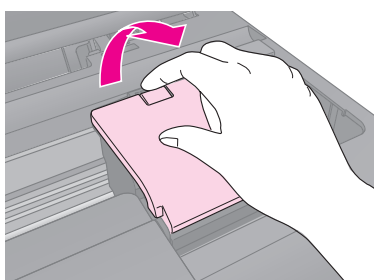
2. Lift up the scanner unit to access the printer area.



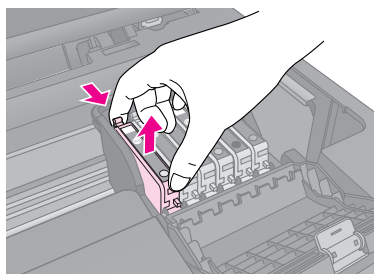
3. Open the cartridge cover.

Caution:

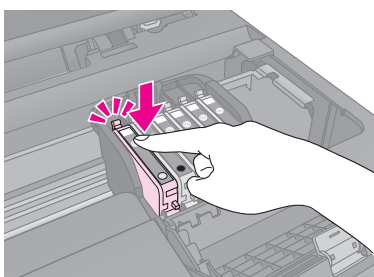
Never attempt to open the cartridge cover while the print head is moving. Wait until the cartridges have moved to the replacement position.



4. Remove the cartridge you need to replace. Squeeze the tab at the back of the cartridge and lift it straight out. Dispose of it carefully. Do not take the used cartridge apart or try to refill it.



5. Unwrap the new cartridge.
6. Place the new cartridge into the holder and push it down until it clicks into place.

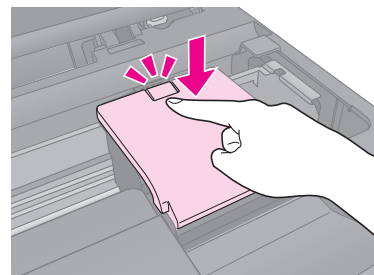


If you need to replace other ink cartridges, repeat steps 4 through 6 before continuing with the next step.

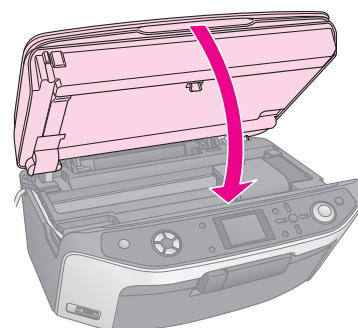
7. Close the ink cartridge cover and press it until it clicks into place.

Caution:

If you find it difficult to close the cover, make sure all the cartridges are firmly seated. Press down on each cartridge until you hear it click into place. Do not attempt to force the cover closed.



8. Close the scanner unit.



9. Press **OK**.

The EPSON STYLUS PHOTO RX begins charging ink and the **Charging ink. Please wait.** message appears on the LCD screen.

Wait until the message **Ink cartridge replacement is complete.** appears on the LCD screen before you continue printing.

Caution:

Never turn off the EPSON STYLUS PHOTO RX during ink charging or you will waste ink.

Checking and Cleaning the Print Head

If your printouts are unexpectedly light, colors are missing, or you see light or dark lines across the page, you may need to clean the print head. This clears the print head nozzles, which can become clogged if you do not use the EPSON STYLUS PHOTO RX for a long time.

Note:

Make sure the front tray is in the paper position (lower position) and the CD/DVD tray is not inserted in the EPSON STYLUS PHOTO RX. For detailed information, see "Loading Paper" on page 4.

Tip:

It is a good idea to turn on your EPSON STYLUS PHOTO RX at least once a month to maintain good print quality.

Checking the print head

You can print a nozzle check pattern to see if any print head nozzles are clogged, or to check the results after cleaning the print head.

1. Press the **Setup** button. (If you have just finished cleaning the print head, you can start the nozzle check by pressing the **Start** button.)
2. Use the **▲** or **▼** button to select **Nozzle Check**, then press the **►** button.
3. Make sure plain paper is loaded, then press the **Start** button to print the nozzle check pattern.
4. Examine the nozzle check pattern you printed. Each staggered line should be solid, with no gaps, as shown.



- If your printout looks okay, press the **Back** button to return to the main menu.
- If you see any gaps, as shown below, press the **Start** button to clean the print head as described in the next section.



Cleaning the print head

Follow these steps to clean the print head so it can deliver ink properly. Print head cleaning uses ink, so clean it only if quality declines.

Note:

If a message on the LCD screen tells you that a cartridge is empty or low on ink, you cannot clean the print head. You must first replace the indicated ink cartridge.

1. Make sure the EPSON STYLUS PHOTO RX is turned on but not printing.
2. Press the **Setup** button.
3. Use the **▲** or **▼** button to select **Head Cleaning**, then press the **►** button.
4. Press the **Start** button to start cleaning the print head.

Cleaning takes about 60 seconds, during which the message **Print head cleaning in progress. Please wait.** appears on the LCD screen.

Caution:

To avoid damaging the EPSON STYLUS PHOTO RX, never turn it off while head cleaning is in progress.

5. When cleaning finishes, press the **Start** button to print a nozzle check pattern to check the results.

If you do not see any improvement after cleaning three or four times, check the solutions beginning on page 42. You can also turn the EPSON STYLUS PHOTO RX off and wait overnight to allow any dried ink to soften. Then try cleaning the print head again.

Aligning the Print Head

If your printouts look grainy or vertical lines appear jagged, you may need to align the print head.

Note:

Make sure the front tray is in the paper position (lower position) and the CD/DVD tray is not inserted in the EPSON STYLUS PHOTO RX. For detailed information, see "Loading Paper" on page 4.

1. Make sure the EPSON STYLUS PHOTO RX is turned on and not printing.
2. Load several sheets of plain paper.
3. Press the **Setup** button.
4. Use the **▲** or **▼** button to select **Head Alignment**, then press the **►** button.
5. Press the **Start** button to print the alignment pattern.

The following alignment sheet is printed.

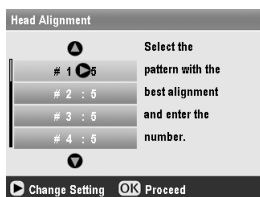
Note:

Do not press the **Stop/Clear Settings** button while printing an alignment pattern.

6. Look at pattern #1 and find the patch that is most evenly printed, with no noticeable streaks or lines.



- Press the ► button then use the ▲ or ▼ button to select the number for that patch.



- Press **OK**, then enter the numbers for the other patterns in the same way.
- When you are done, press **OK** and you see a **Print head alignment is complete.** message. Press **OK** to return to the Setup mode.

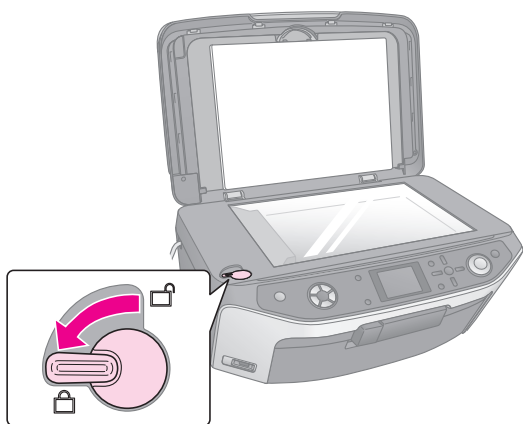
Transporting Your EPSON STYLUS PHOTO RX

If you need to move your EPSON STYLUS PHOTO RX some distance, carefully repack it using the original box (or one of a similar size).

⚠ Caution:

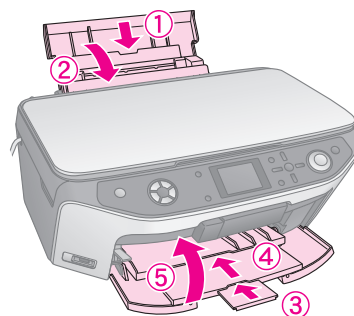
- ❑ When storing or transporting the EPSON STYLUS PHOTO RX, avoid tilting it, placing it vertically, or turning it upside down; otherwise ink may leak from the cartridges.
- ❑ Leave the ink cartridges installed; removing the cartridges for transportation may damage the EPSON STYLUS PHOTO RX.

- Remove all paper from the sheet feeder and make sure the EPSON STYLUS PHOTO RX is off.
- Open the scanner unit and make sure the print head is in the home position on the right.
- Close the scanner unit.
- Open the document cover and turn the transportation lock to secure the scanner, as shown.



- Unplug the power cord from the outlet, then disconnect the USB cable from your computer.

- Close the paper support, the front tray, and the front cover.



- Repack the EPSON STYLUS PHOTO RX in the box, using the protective materials that came with it.

Keep the EPSON STYLUS PHOTO RX level as you transport it. After you move it, make sure you unlock the scanner.

Changing the Language Displayed on the LCD Screen

You can change the language displayed on the LCD screen.

- Press the **Setup** button.
- Use the ▲ or ▼ button to select **Language**, then press the ► button.
- Use the ▲ or ▼ button to select the language that you want to display.
- Press **OK**.

Solving Problems

If you have a problem with your EPSON STYLUS PHOTO RX, check the messages on the LCD screen, run a nozzle check (➔ page 40), or see “Problems and Solutions” on page 42.

Error Messages

You can diagnose and solve most problems by checking the error messages on the LCD screen. If you cannot solve the problems by checking the messages, use the following table and try the recommended solution.

Note:

The solutions are for problems that happen when using the EPSON STYLUS PHOTO RX stand alone. Refer to the online *User's Guide* for detailed solutions for printing, scanning, print quality, or computer-related problems.

Error Messages	Solution
A printer error occurred. Please see your manual.	Turn the EPSON STYLUS PHOTO RX off and then back on. Make sure the protective tapes or papers are not still in the printer. If the error message still appears, contact your dealer.
A scanner error has occurred. Please see your manual.	Turn the EPSON STYLUS PHOTO RX off and then back on. Make sure the transportation lock is released. If the error message still appears, contact your dealer.
Service required. Parts inside your printer are near the end of their service life. See your manual for details.	Waste ink pad in the printer is saturated. Contact your dealer to replace it.
Service required. Parts inside your printer are at the end of their service life. See your manual for details.	
Cannot recognize the USB device.	Make sure the memory card has been inserted correctly. If you connected a USB storage device, make sure the storage disk has been inserted correctly.
Cannot recognize the memory card or disk.	Make sure the memory card or storage disk has been inserted correctly. If so, check to see if there is a problem with the card or disk and try again.

Error Messages	Solution
A problem occurred while formatting. Formatting canceled.	Retry the procedure. If the error reoccurs, there may be a problem with your memory card or storage disk. Check the card or disk and try again.
An error occurred while saving. Save canceled.	
An error occurred while clearing files. Operation canceled.	
Cannot create a folder on the memory card or disk. Operation canceled.	Insert a new memory card and try again.
Print head cleaning failed.	Retry the procedure. If the error message still appears, contact your dealer.
Cannot perform print head cleaning due to low ink level.	Check the ink levels and replace the ink cartridge as described on page 38. Then try again.

Problems and Solutions

Check the solutions below if you are having trouble using your EPSON STYLUS PHOTO RX.

Setup problems

The EPSON STYLUS PHOTO RX makes noise after you turn it on.

- Make sure the protective tape is not blocking the print head.
- Make sure the scanner lock is in the unlocked position, as shown on the *Start Here* sheet.

After releasing the print head or scanner lock, turn off the power, wait a moment, then turn it back on.

The EPSON STYLUS PHOTO RX makes noise after ink cartridge installation.

- When you install ink cartridges, the EPSON STYLUS PHOTO RX must charge its ink delivery system. Wait until it is finished (the Charging message disappears from the LCD screen), then turn it off. If it is turned off early, it may use extra ink the next time you turn it on.
- Make sure the ink cartridges are seated securely and no packing material remains in the EPSON STYLUS PHOTO RX. Open the cartridge cover and push the cartridges down until they click into place. Turn off the power, wait a moment, then turn it back on.

The terms on the LCD screen are not displayed in your language.

If the language displayed on the LCD screen is not the one you want to display, select the language you want from the Setup menu. See “Changing the Language Displayed on the LCD Screen” on page 41 for details.

Printing and copying problems

The EPSON STYLUS PHOTO RX is on, but nothing prints.

- Make sure the USB cable is securely connected at both ends.
- Run a nozzle check as described on page 40. If nothing prints, you may need to clean the print head.

The EPSON STYLUS PHOTO RX makes printing sounds, but nothing prints.

- The print head nozzles may need cleaning; ➔ page 40.
- Make sure the EPSON STYLUS PHOTO RX is on a flat, stable surface.

The margins are incorrect.

- Make sure the paper size settings are correct for the paper you have loaded.
- Choose the correct margins for your paper size.
- Make sure your paper is loaded short edge first on the right side of the sheet feeder, with the left edge guide lightly against the paper.
- Do not load too many sheets at once (do not go past the ≡ arrow mark on the left edge guide); ➔ page 4.
- Select **Actual** instead of **Auto Fit Page** or adjust the zoom settings.

The EPSON STYLUS PHOTO RX prints blank pages.

- Make sure the paper size settings are correct for the paper you have loaded; ➔ page 4.
- The print head nozzles may need cleaning; ➔ page 40.

Your printout is too dark.

If you are copying, press the ≡ Print Settings button and adjust the **Copy Density**.



Scanning problems

The transparency unit window is not on.

- The lamp turns off automatically to save power (sleep mode); it comes on when you start scanning.
- Make sure the EPSON STYLUS PHOTO RX is plugged into a working power outlet.

The EPSON STYLUS PHOTO RX does not scan.

- Wait until the transparency unit window stays on (ready for scanning). You may need to preview your scan to make the lamp come on.
- If you are scanning slides, negatives, or film, make sure that you have removed the white document mat and that the film holder is positioned correctly.

Paper feed problems

Paper does not feed correctly or is jammed.

- If paper does not feed, remove it from the sheet feeder. Fan the paper, load it against the right side, and slide the left edge guide against the paper (but not too tightly). Do not load too many sheets at once (do not go past the ≡ arrow mark on the left edge guide); ➔ page 4.
- If paper is jammed, press the ◇ **Start** button to eject the jammed paper. If the paper is not ejected, turn off the power, lift open the scanner unit, and remove any paper that is inside, including any torn pieces. Carefully reload paper, turn the power back on, and press the ◇ **Start** button.
- If paper jams frequently, make sure the left edge guide is not pushed too tightly against the paper. Try loading fewer sheets of paper. Do not load too many sheets at once (do not go past the ≡ arrow mark on the left edge guide); ➔ page 4.

Print quality problems

You see banding (light lines) in your printouts or copies.



- Clean the print head; ➔ page 39.

- Make sure you select the correct paper type; ➔ page 4.
- Make sure the printable (whiter or glossier) side of the paper is face up.
- The ink cartridges may need replacing; ➔ page 38.
- Align the print head; ➔ page 40.

Your printout is blurry or smeared.



- Make sure your paper is not damp, curled, or loaded face down (the whiter or glossier printable side should be face up). Load new paper face-up.
- Use a support sheet with special paper or try loading your paper one sheet at a time.
- Align the print head; ➔ page 40.
- Make several copies without placing a document on the document table.
- Use only paper recommended by Epson and genuine Epson cartridges.

Your printout is faint or has gaps.

- Clean the print head; ➔ page 40.
- The ink cartridges may be old or low on ink; ➔ page 38.
- Make sure you select the correct paper type. ➔ page 4.
- Make sure your paper is not damaged, old, dirty, or loaded face-down. If it is, load new paper with the whiter or glossier side face-up.

Your printout is grainy.

- Make sure you select **Best Photo** as the quality setting.
- If you are printing or copying a photo, make sure you are not enlarging it too much. Try printing it smaller.
- Align the print head; ➔ page 40.

You see wrong or missing colors.

- Clean the print head; ➔ page 40.
- The ink cartridges may be old or low on ink; ➔ page 38.

- Make sure you loaded the right paper and selected the correct setting for it on the LCD screen.
- Make sure you are not using a special effect that alters image colors, like Sepia.
- If your paper runs out, replace it as soon as possible. If the EPSON STYLUS PHOTO RX is left without paper for a long period of time, the colors of your next copy or print job may be incorrect.

Miscellaneous printing problems

The image size or position is incorrect.

- Make sure the paper and/or layout options are set correctly. Check the layout settings on the LCD screen.
- Make sure the original is placed correctly on the document table; ➔ page 8.

Scan quality problems

Your scanned image is blurry or distorted.

- Make sure the original is placed flat against the document table. If only part of the image is blurred, your original may be wrinkled or warped.
- Clean the document table with a soft, dry, lint-free cloth (paper towels are not recommended). If the glass is still not clean, use a small amount of glass cleaner on a soft cloth. Make sure you wipe off any remaining cleaner. Do not spray glass cleaner directly on the glass.
- Make sure the EPSON STYLUS PHOTO RX is not tilted or placed on an unstable or uneven surface.



Only part of the photo is scanned.

The scanner has non-readable areas at the edges. Move the photo away from the edges slightly.



The file size is too big.

Try changing the quality settings.

A dotted line appears in the image.

- Clean the document table with a soft, dry, lint-free cloth (paper towels are not recommended). If the document table is still not clean, use a small amount of glass cleaner on a soft cloth. Make sure you wipe off any remaining cleaner. Do not spray glass cleaner directly on the glass.
- If the line is just on your printouts, you may need to clean the print head; ➡ page 40.

Customer Support

Contacting Customer Support

If your Epson product is not operating properly and you cannot solve the problem using the troubleshooting information in your product documentation, contact customer support services for assistance. Check your Pan-European Warranty Document for information on how to contact EPSON Customer support. They will be able to help you much more quickly if you give them the following information:

- Product serial number
(The serial number label is usually on the back of the product.)
- Product model
- Product software version
(Click **About**, **Version Info**, or similar button in the product software.)
- Brand and model of your computer
- Your computer operating system name and version
- Names and versions of the software applications you normally use with your product

Technical Support Web Site

Go to <http://www.epson.com> and select the Support section of your local EPSON web site for the latest drivers, FAQs, manuals and other downloadables.

Epson's Technical Support Web Site provides help with problems that cannot be solved using the troubleshooting information in your printer documentation.

Important Safety Instructions

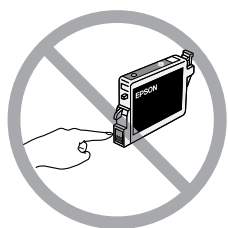
Before using your EPSON STYLUS PHOTO RX, read and follow these safety instructions:

- Use only the power cord that comes with the EPSON STYLUS PHOTO RX. Use of another cord may cause fire or shock. Do not use the cord with any other equipment.
- Make sure the power cord meets all relevant local safety standards.
- Use only the type of power source indicated on the label.
- Place the EPSON STYLUS PHOTO RX near a wall outlet where the plug can be easily unplugged.
- Do not let the power cord become damaged or frayed.
- If you use an extension cord with the EPSON STYLUS PHOTO RX, make sure the total ampere rating of the devices plugged into the extension cord does not exceed the cord's ampere rating. Also, make sure the total ampere rating of all devices plugged into the wall outlet does not exceed the wall outlet's ampere rating.
- Avoid locations that are subject to rapid changes in heat or humidity, shocks or vibrations, or dust.
- Leave enough room around the EPSON STYLUS PHOTO RX for sufficient ventilation.
- Do not place the EPSON STYLUS PHOTO RX near a radiator or heating vent or in direct sunlight.
- Place the EPSON STYLUS PHOTO RX on a flat, stable surface that extends beyond its base in all directions. It will not operate properly if it is tilted or at an angle.
- Make sure the back of the EPSON STYLUS PHOTO RX is at least 10 cm away from the wall.
- Do not spill liquid on the EPSON STYLUS PHOTO RX.
- Do not use aerosol products that contain flammable gases inside or around the EPSON STYLUS PHOTO RX. Doing so may cause fire.
- Never open the document cover beyond where it stops, and do not place heavy objects on top of the EPSON STYLUS PHOTO RX.
- Do not block or cover openings in the case or insert objects through the slots.
- Except as specifically explained in your documentation, do not attempt to service the EPSON STYLUS PHOTO RX yourself.
- Unplug the EPSON STYLUS PHOTO RX and refer servicing to qualified service personnel under the following conditions: if the power cord or plug is damaged; if liquid has entered the product; if the product has been dropped or the case damaged; if the product does not operate normally or exhibits a distinct change in performance. Adjust only those controls that are covered by the operating instructions.
- When storing or transporting the EPSON STYLUS PHOTO RX, do not tilt it, stand it on its side, or turn it upside down. Otherwise ink may leak from the cartridges.
- Be careful not to trap your fingers when closing the scanner unit.

Ink cartridge safety instructions

- Keep ink cartridges out of the reach of children and do not drink the ink.
- Be careful when you handle used ink cartridges; there may be ink remaining around the ink supply port. If ink gets on your skin, wash it off with soap and water. If it gets in your eyes, flush them immediately with water. If you still have discomfort or vision problems, see a doctor immediately.
- Do not put your hand inside the EPSON STYLUS PHOTO RX or touch the cartridges during printing.
- Do not shake cartridges, as this might cause leakage.
- Install an ink cartridge immediately after you remove it from its package. Leaving the cartridge unpacked for a long time before use may result in reduced print quality.
- Do not remove or tear the label on an ink cartridge; this can cause leakage.

- Do not touch the green IC chip on the side of the cartridge. This may affect normal operation and printing.



- If you remove an ink cartridge for later use, protect the ink supply area from dirt and store it in the same environment as the EPSON STYLUS PHOTO RX. There is a valve in the ink supply port, making covers or plugs unnecessary, but care is needed to prevent the ink from staining items that the cartridge touches. Do not touch the ink supply port or surrounding area.

ENERGY STAR® Compliance



As an ENERGY STAR Partner, Epson has determined that this product meets the ENERGY STAR guidelines for energy efficiency.

The International ENERGY STAR Office Equipment Program is a voluntary partnership with the computer and office equipment industry to promote the introduction of energy-efficient personal computers, monitors, printers, fax machines, copiers, scanners, and multi function devices in an effort to reduce air pollution caused by power generation. Their standards and logos are uniform among participating nations.

Copyright Notice

No part of this publication may be reproduced, stored in a retrieval system, or transmitted in any form or by any means, electronic, mechanical, photocopying, recording, or otherwise, without the prior written permission of Seiko Epson Corporation. The information contained herein is designed only for use with this product. Epson is not responsible for any use of this information as applied to other printers.

Neither Seiko Epson Corporation nor its affiliates shall be liable to the purchaser of this product or third parties for damages, losses, costs, or expenses incurred by the purchaser or third parties as a result of accident, misuse, or abuse of this product or unauthorized modifications, repairs, or alterations to this product, or (excluding the U.S.) failure to strictly comply with Seiko Epson Corporation's operating and maintenance instructions.

Seiko Epson Corporation shall not be liable for any damages or problems arising from the use of any options or any consumable products other than those designated as Original Epson Products or Epson Approved Products by Seiko Epson Corporation.

Seiko Epson Corporation shall not be held liable for any damage resulting from electromagnetic interference that occurs from the use of any interface cables other than those designated as Epson Approved Products by Seiko Epson Corporation.

EPSON® is a registered trademark, and EPSON STYLUS™ and Exceed Your Vision are trademarks of Seiko Epson Corporation.

PRINT Image Matching™ and the PRINT Image Matching logo are trademarks of Seiko Epson Corporation. Copyright© 2001 Seiko Epson Corporation. All rights reserved.

USB DIRECT-PRINT™ and the USB DIRECT-PRINT logo are trademarks of Seiko Epson Corporation. Copyright© 2002 Seiko Epson Corporation. All rights reserved.

Microsoft® and Windows® are registered trademarks of Microsoft Corporation.

Macintosh® is a registered trademark of Apple Computer, Inc.

DPOF™ is a trademark of CANON INC., Eastman Kodak Company, Fuji Photo Film Co., Ltd. and Matsushita Electric Industrial Co., Ltd.

SD™ is a trademark.

Memory Stick, Memory Stick Duo, Memory Stick PRO, and Memory Stick PRO Duo are trademarks of Sony Corporation.

xD-Picture Card™ is a trademark of Fuji Photo Film Co., Ltd.

Zip® is a registered trademark of Iomega Corporation.

General Notice: Other product names used herein are for identification purposes only and may be trademarks of their respective owners. Epson disclaims any and all rights in those marks.

Copyright © 2005 Seiko Epson Corporation. All rights reserved.

Index

A

Aligning print head, 40 to 41

B

Banding, 43 to 44

Blank pages, 43

Blurry

scan, 44

Brightness

copies, 9, 14, 44

Buttons, 3

C

Camera

connecting to printer, 29

printing from, 29

Canceling

copying, 3

printing, 3

Cartridge cover, 2

Cartridges, replacing, 38 to 39

CD/DVD

adjusting print position, 7

copying, 11

ejecting, 7

loading, 6

printing on, 22 to 23

CD/DVD tray, 2

CDs, saving files on, 27

Checking print nozzles, 40

Cleaning print head, 40

Color

incorrect, 44

restoration, 11, 33

Combo Printing Sheet, 24

Contact sheet, 20 to 22, 24 to 27

Control panel, 3

Copy Density setting, 9, 14

Copying

brightness, adjusting, 9, 14

canceling, 3

CD/DVD, 11

layout options, 12 to 13

multiple originals on one sheet, 13

photos, 8 to 9

slides and negatives, 30 to 34

text and graphics, 8 to 9

Correcting color, 44

Cropping

memory card images, 22

photos, 10

scanned images, 33 to 34

Customer support, 45

Cut off prints, 43

D

Darkening copies, 9, 14

Dark image, 44

Default settings, 20

Deleting all files on memory card, 28

Density setting, 9, 14

Digital camera

compatible file types, 29

connecting to printer, 29

printing from, 29

Document

placing on document table, 8

position problems, 44

Document cover, 2

Document mat, 2, 30

DPOF (Digital Print Order Format), 19

E

Edge guide, 2

Empty ink, 38

Energy, saving, 3

Epson

help, 45

paper, 4

PRINT Image Framing Tool, 11, 19

Error messages, 42

EXT. I/F USB port, 2

F

Factory settings, 20

Faded photos, 11, 33

Faint prints, 44

Feeder guard, 2

Feeding problems, 43

File size, 44

File types, memory card, 15

Film

crop print, 33 to 34

printing from, 30 to 34

restoring color, 33

scanning to memory card, 35 to 36

Film holder

loading film, 31

loading slides, 30

removing from document mat, 30

Flash memory card, 27 to 28

Front tray, 2

G

Gaps in prints, 44

Grainy printouts, 44

H

Help, Epson, 45

I

Image quality problems, 44
 Incorrect colors, 44
 Index sheet, 20 to 22
 Infrared port, 2
 Infrared specification, 37
 Ink cartridges
 checking levels, 38
 empty, 38
 purchasing, 38
 replacing, 38 to 39
 safety instructions, 46 to 47
 Ink nozzle check, 40
 Installing ink cartridges, 38 to 39

J

Jammed paper, 43

L

Layout
 CD/DVD, 23
 copy, 12 to 13
 print, 18
 problems, 44
 Lightening copies, 9, 14
 Lines in prints, 43 to 44
 Low ink, 38

M

Margin problems, 43
 Memory card light, 16
 Memory cards
 compatible, 15
 cropping photos from, 22
 index sheet of photos on, 20 to 22
 inserting, 16
 printing from, 15 to 27
 printing on CD/DVD, 22 to 23
 removing, 16
 saving files from, 27
 scanning to, 35 to 36
 supported file types, 15
 template, 24 to 27
 using Combo Printing Sheet, 24 to 27
 Memory card slot, 2
 Messages, error, 42
 MO (Magneto-Optical) drive, 27 to 28
 Mobile phone
 printing from, 37

N

Negatives
 loading, 31
 printing from, 30 to 34
 restoring color, 33
 scanning to memory card, 35 to 36
 Noise, 42
 Nozzle check, 40

P

Paper
 jams, 43
 loading, 4 to 5
 selecting, 4
 Paper support, 2
 Paper Type setting, 4
 Photos
 copying, 8 to 9
 cropping, 22, 33 to 34
 placing on document table, 8
 position problems, 44
 reprinting, 9 to 10
 restoring color in, 11, 33
 scanning to memory card, 35 to 36
 supported file types, 15
 PictBridge, 29
 PIF Designer, 11, 19
 PIF Tool, 11, 19
 Power, saving, 3
 Print head
 aligning, 40 to 41
 cleaning, 40
 noise, 42
 PRINT Image Framer, 11, 19
 Printing
 from camera, 15 to 29
 from Combo Printing Sheet, 24 to 27
 from index sheet, 20 to 22
 from memory card, 15 to 26
 from mobile phone, 37
 from slides or negatives, 30 to 34
 from template, 24 to 27
 from USB storage drive, 27
 Printing Sheet, 24
 Problems
 copying, 43
 image quality, 44
 paper feeding, 43
 printing, 39, 43, 44
 print quality, 43 to 44
 scanning, 43
 scan quality, 44
 setting up, 42
 solving, 42 to 45
 Proof sheet, 20 to 22

R

Removing ink cartridges, 38 to 39
 Replacing ink cartridges, 38 to 39
 Reprinting photos, 9 to 10
 Restoring color, 11, 33
 Restoring default settings, 20

S

Safety instructions, 46 to 47
 Saving files from memory cards, 27
 Scanner glass, 2
 Scanner unit, 2
 Scanning
 Combo Printing Sheet, 26
 film and slides, 35 to 36
 index sheet, 21

- problems, 43, 44
- template, 26
 - to a memory card, 35 to 36
- Screen saver, 3
- Setup mode, 20
- Setup problems, 42
- Sheet feeder, 2
- Sleep mode
 - LCD screen, 3
 - scanning lamp, 43
- Slides
 - printing from, 30 to 34
 - restoring color, 33
 - scanning to memory card, 35 to 36
- Slide show, 16
- Smears, 44
- Solving problems, 42 to 45
- Stopping
 - copying, 3
 - printing, 3

T

- Technical support, 45
- Thumb drive, 27 to 28
- Thumbnail printing, 20 to 22
- Transparency unit, 2, 31
- Transparency unit window, 2, 30, 43
- Transportation lock, 2, 41
- Transporting, 41
- Tray lever, 2
- Troubleshooting, 42 to 45

U

- USB device connector, 2
- USB DIRECT-PRINT, 29
- USB flash drive, 27 to 28
- Using Combo Printing Sheet, 24 to 27

W

- Wrinkled paper, 43

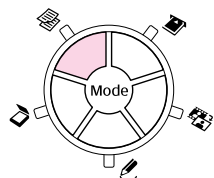
Z

- Zip drive, 27 to 28

Memo

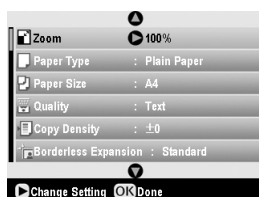
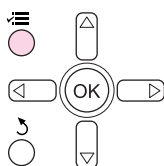
Summary of Panel Settings

Copy mode



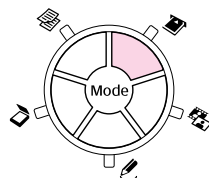
Copies	1 to 99
Color/B&W	Color, B&W
Document type	Text, Photo
Layout	With Borders, Borderless, CD Copy, 2-up Copy, 4-up Copy, Repeat Copy-4, Repeat Copy-9, Repeat Copy-16

Print settings for Copy mode



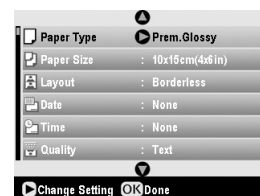
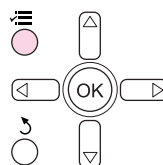
Zoom	Actual, Auto Fit Page, 10 × 15 → A4, A4 → 10 × 15, 13 × 18 → 10 × 15, 10 × 15 → 13 × 18, A5 → A4, A4 → A5
Paper Type	Plain Paper, Matte, PQIJ, Prem.Glossy, Ultra Glossy, SemiGloss, Photo Paper
Paper Size	A4, A5, 10 × 15 cm (4 × 6 in), 13 × 18 cm (5 × 7 in), 16:9 wide size
Quality	Draft, Text, Photo, Best Photo
Copy Density	-4 to +4
Borderless Expansion	Standard, Mid, Min

Memory Card mode



View and Print Photos	
Print All Photos	
Print by Date	
Print Range of Photos	
Print Cropped Photos	
Print Index Sheet	
Play Slide Show	

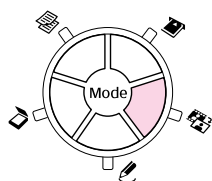
Print settings for Memory Card mode



Paper Type	Prem.Glossy, Ultra Glossy, SemiGloss, Photo Paper, Plain Paper, Matte, PQIJ, PhotoStickers
Paper Size	10 × 15 cm (4 × 6 in), 13 × 18 cm (5 × 7 in), A4, A6, 16:9 wide size
Layout	Borderless, Border, Upper Half, 2-up, 4-up, 8-up, 16-up, 20-up, Index
Date	None, yyyy.mm.dd, mmm.dd.yyyy, dd.mmm.yyyy
Time	None, 12-hour system, 24-hour system
Quality	Normal, Photo, Best Photo
Filter	Off, Sepia, B&W
Auto Correct	PhotoEnhance, P.I.M., None
Brightness	Brightest, Brighter, Standard, Darker, Darkest
Contrast	Standard, Higher, Highest

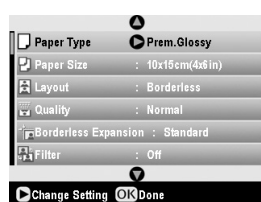
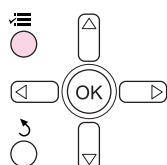
Sharpness	Sharpest, Sharper, Standard, Softer, Softest
Saturation	Highest, Higher, Standard, Lower, Lowest
Print Info.	Off, On
Small Image	Off, On
Fit to Frame	On, Off
Bidirectional	On, Off
Borderless Expansion	Standard, Mid, Min
PIF Relation	On, Off

Slide/Negative mode



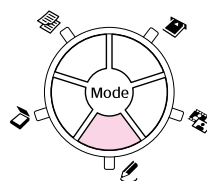
Color Negative	
Color Positive(slide)	
BW Negative	
Color Positive(strip)	

Print settings for Slide/Negative mode



Paper Type	Prem.Glossy, Ultra Glossy, SemiGloss, Photo Paper, Plain Paper, Matte, PQIJ
Paper Size	10 × 15 cm (4 × 6 in), 13 × 18 cm (5 × 7 in), A4, 16:9 wide size
Layout	Borderless, Border
Quality	Normal, Photo, Best Photo
Borderless Expansion	Standard, Mid, Min
Filter	Off, B&W

Specialty Print mode



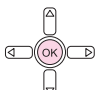
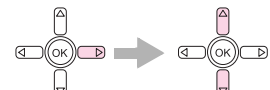

Reprint/Restore Photos	
CD/DVD Print	
Combo Printing Sheet	
P.I.F. Print	

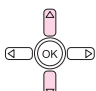
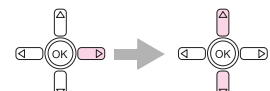
Print settings for Specialty Print mode

Reprint/Restore Photos	
Paper Type	Prem.Glossy, Ultra Glossy, SemiGloss, Photo Paper, Matte
Paper Size	10 × 15 cm (4 × 6 in.), 13 × 18 cm (5 × 7 in.), A4
Layout	Borderless, Border
Quality	Photo
Borderless Expansion	Standard, Mid, Min
Filter	Off, B&W

CD/DVD Print		
	Print settings when CD Label is selected as the Media Type.	Print settings when CD Jacket is selected as the Media Type.
Media Type	CD Label	CD Jacket
Paper Type	CD/DVD, Plain Paper	Prem.Glossy, Ultra Glossy, SemiGloss, Photo Paper, Plain Paper, Matte, PQIJ
Paper Size	CD/DVD	A4
Layout	1-up, 4-up, 8-up, 12-up	Jewel Case Upper, Jewel Case index
Density	Standard, Darker, Darkest	-

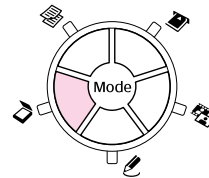
Date	-	None, yyyy.mm.dd, mmm.dd.yyyy, dd.mmm.yyyy
Time	-	None, 12-hour system, 24-hour system
Quality	-	Normal, Photo, Best Photo,
Filter	Off, Sepia, B&W	Off, Sepia, B&W
Auto Correct	Photo Enhance, P.I.M., None	Photo Enhance, P.I.M., None
Brightness	Brightest, Brighter, Standard, Darker, Darkest	Brightest, Brighter, Standard, Darker, Darkest
Contrast	-	Standard, Higher, Highest
Sharpness	Sharpest, Sharper, Standard, Softer, Softest	Sharpest, Sharper, Standard, Softer, Softest
Saturation	Highest, Higher, Standard, Lower, Lowest	Highest, Higher, Standard, Lower, Lowest
Print Info.	-	Off, On
Small Image	-	Off, On
Fit to Frame	-	On, Off
Bidirectional	-	On, Off
Borderless Expansion	-	Standard, Mid, Min

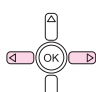
Combo Printing Sheet	
	
Paper Type	Prem.Glossy, Ultra Glossy, SemiGloss
Paper Size	10 × 15 cm (4 × 6 in.)
Frame	Standard, Ellipse, Ellipse-shading
Layout	

P.I.F. Print	
	
Paper Type	Prem.Glossy, Ultra Glossy, SemiGloss, Photo Paper, Plain Paper, Matte, PQIJ
Paper Size	10 × 15 cm (4 × 6 in.), 13 × 18 cm (5 × 7 in.), A4
Quality	Normal, Photo, Best Photo
Filter	Off, B&W, Sepia
Auto Correct	PhotoEnhance, P.I.M., None
Brightness	Brightest, Brighter, Standard, Darker, Darkest

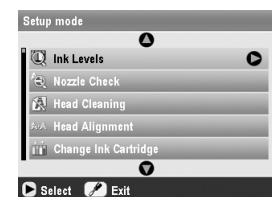
Contrast	Standard, Higher, Highest
Sharpness	Sharpest, Sharper, Standard, Softer, Softest
Saturation	Highest, Higher, Standard, Lower, Lowest
Small Image	Off, On
Bidirectional	On, Off

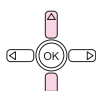
Scan mode




Save to Memory Card
Scan to PC
Scan to PDF
Scan to Email

Setup mode




Ink Levels
Nozzle Check
Head Cleaning
Head Alignment
Change Ink Cartridge
Memory Card Backup
CD/DVD Inner Print Position
CD/DVD Outer Print Position
CD/DVD Print Pos. Up-Down
CD/DVD Print Pos. Left-Right
Stickers Position Up-Down
Stickers Position Left-Right
PictBridge Setup
Select Folder
BT Printer ID Set
BT Connectivity Mode
BT Encryption

BT PIN Code Set
BT Device Address
Thick Paper
Language
Restore to Factory Settings
Clear All Files
Screen Saver Settings

EPSON

EXCEED YOUR VISION



MEMORY STICK PROTM



410531400

Printed in XXXXXX XX.XX-XX XXX