

User's Guide Update

Notice for C82363*/C82364* Users

Use a shielded twisted-pair cable (Category-5) to connect the interface card, otherwise the interface card may malfunction.

For C82363* Users

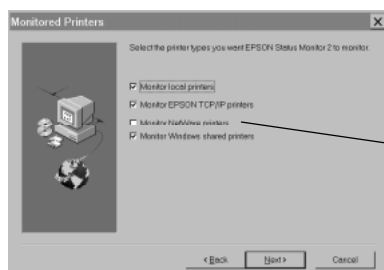
The C82363* Ethernet card also has a DC power connection. You can connect the C82363* Ethernet card to the following EPSON printers using AC adapter C82525* (Model EU-30);

EPSON Stylus COLOR 800/850
FX-880/ 1100/ 2170
DFX-8500
LQ-670/ 2070/ 2170
DLQ-3000+

Before connecting, change the power select switch on the board to the "A" position.

For Microsoft® Windows® 98 Users

- The EPSON Net!2 for Windows can be used with Windows 98. Follow the instructions for Windows 95 in the Administrator's Manual.
- If you are using a NetWare printer, EPSON Status Monitor 2 utility is not available. Make sure to deselect the Monitor NetWare printers check box when you install EPSON Status Monitor 2 utility.



Deselect here.

Using Bindery Emulation mode for Netware 4.x

Follow the steps below when using Bindery Emulation mode in Netware 4.x.

Making Settings in Print Server mode

1. Log in to the server as a SUPERVISOR. Make sure to log in as Bindery correspondence.
2. Run PCONSOLE.
3. From the Available Options screen, select Quick Setup.
4. Type the Print Server and Print Queue name, and select Parallel, Manual load, Polling mode, or LPT1 for the printer type.
5. Press Esc to exit PCONSOLE.
6. Using EPSON Net!2 for Windows, configure the Ethernet card in Print Server mode. Make sure to use the print server created in step 4.

Note:

To configure the Ethernet card using EPSON Net!2, see "Configuring the Ethernet card in Print Server mode" on page 4-8.

Making Settings in Remote Printer mode

1. Log in to the server as a SUPERVISOR. Make sure to log in as Bindery correspondence.
2. Run PCONSOLE.
3. From the Available Options screen, select Print Queues and press Enter. Press insert and type the print queue names. Then press Enter
4. Press Esc.
5. From the Available Options screen, select Print Servers and press Enter. Press Insert and type the print server name. Then press Enter.
6. Press Esc to exit PCONSOLE, and logout from the server.
7. Then, log in to the server as an ADMIN. Make sure to log in with NDS connection.
8. Start Nwadmin.
9. To create the Printer Object, click the container (with the Print Server object created in step 5) specified as the Bindery context and select Object, then Create, click OK and then select Printer. Type the printer name and click Create.
10. To assign the print queue, double-click the Printer object icon (created in step 9). The Printer dialog box appears.
11. Click Assignments and then click Add. From the print queue list, select the queue (created in step 3) and click OK.
12. Click Configuration in the Printer dialog box, and select Parallel from the Printer type pull-down menu.
13. Then, click Communication. Select LPT1 for the Port; check Polled for Interrupts; and check Manual load (Remote from Print Server) as the Connection type.
14. Click OK to close the dialog box, then click OK in the Printer dialog box.

15. To assign the printer, double-click the Printer Server object icon (created in step 5). The Print Server dialog appears.
16. Click Assignments and then click Add. From the printer object list, select the printer object (created in step 9) and click OK.
17. In the Print Server dialog box, select the assigned printer from the printer object list, and click the Printer Number button to set a printer number from 0 to 254. Then click OK.
18. To confirm the objects you have assigned, double-click the Print Server object icon. Click Print Layout, and check that the print server, printer, and print queue are connected.
19. From the System Console of the file server, load the print server module by the following command.

LOAD PSERVER print server name

20. Using EPSON Net!2 for Windows, configure the Ethernet card in Remote Printer mode. Make sure to use the print server name created in step 5 and the printer number set in step 17.

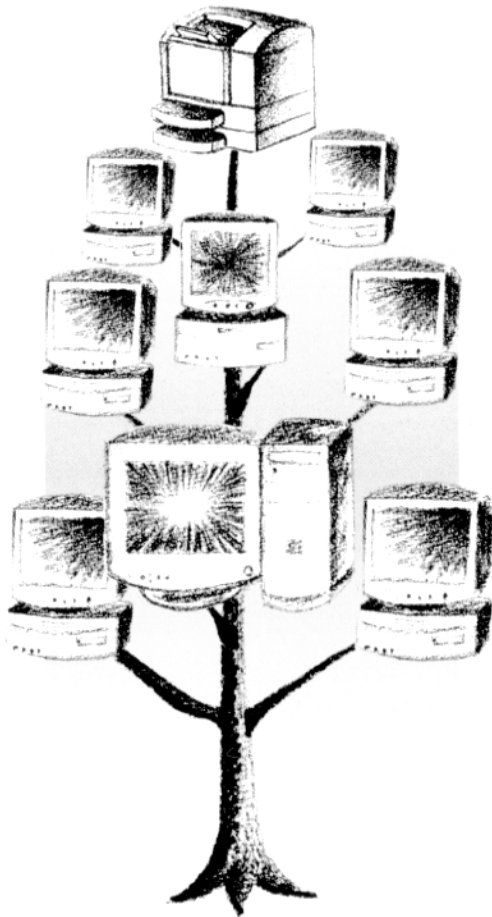
Note:

To configure the Ethernet card using EPSON Net!2, see "Configuring the Ethernet card in Remote Printer mode" on page 4-14.

EPSON

Type B Ethernet Interface Card

C82362*/C82363*/C82364*



Administrator's Manual

**FCC Compliance Statement
For United States Users**

This equipment has been tested and found to comply with the limits for a Class A digital device, pursuant to Part 15 of the FCC Rules. These limits are designed to provide reasonable protection against harmful interference when the equipment is operated in a commercial environment. This equipment generates, uses and can radiate radio frequency energy and, if not installed and used in accordance with the instruction manual, may cause harmful interference to radio communications. Operation of this equipment in a residential area is likely to cause harmful interference in which case the user will be required to correct the interference at his own expense.

This device complies with Part 15 of the FCC Rules. Operation is subject to the following two conditions:

- (1) this device may not cause harmful interference, and
- (2) this device must accept any interference received, including interference that may cause undesired operation.

WARNING

The connection of a non-shielded equipment interface cable to this equipment will invalidate the FCC Certification of this device and may cause interference levels which exceed the limits established by the FCC for this equipment. It is the responsibility of the user to obtain and use a shielded equipment interface cable with this device. If this equipment has more than one interface connector, do not leave cables connected to unused interfaces.

Changes or modifications not expressly approved by the manufacturer could void the user's authority to operate the equipment.

For Canadian Users

This Class A digital apparatus complies with Canadian ICES-003.

Cet appareil numérique de la classe A est conforme à la norme NMB-003 du Canada.

For European Users

This product conforms to CE marking requirements in accordance with EC Directive 89/336/EEC.

AC Adapter model EU-30 conforms to CE making requirements in accordance with EC Directives 73/23/EEC and 89/336/EEC.

WARNING

This is a Class A product. In a domestic environment this product may cause radio interference in which case the user may be required to take adequate measures.

EPSON®

C82362*/ C82363*/ C82364* EPSON Type B Ethernet Interface Card

All rights reserved. No part of this publication may be reproduced, stored in a retrieval system, or transmitted in any form or by any means, electronic, mechanical, photocopying, recording, or otherwise, without the prior written permission of SEIKO EPSON CORPORATION. The information contained herein is designed only for use with this EPSON printer. EPSON is not responsible for any use of this information as applied to other products.

Neither SEIKO EPSON CORPORATION nor its affiliates shall be liable to the purchaser of this product or third parties for damages, losses, costs, or expenses incurred by purchaser or third parties as a result of: accident, misuse, or abuse of this product or unauthorized modifications, repairs, or alterations to this product, or (excluding the U.S.) failure to strictly comply with SEIKO EPSON CORPORATION's operating and maintenance instructions.

SEIKO EPSON CORPORATION shall not be liable against any damages or problems arising from the use of any options or any consumable products other than those designated as Original EPSON Products or EPSON Approved Products by SEIKO EPSON CORPORATION.

EPSON and EPSON ESC/P are registered trademarks and EPSON ESC/P 2 and EPSON Stylus are trademarks of SEIKO EPSON CORPORATION.

General Notice: Other product names used herein are for identification purposes only and may be trademarks of their respective owners. EPSON disclaims any and all rights in those marks.

Copyright © 1998 by SEIKO EPSON CORPORATION, Nagano, Japan.



Printed on Recycled Paper.

Administrator's Manual

Declaration of Conformity

According to ISO/IEC Guide 22 and EN 45014

Manufacturer: SEIKO EPSON CORPORATION
Address: 3-5, Owa 3-chome, Suwa-shi,
Nagano-ken 392 Japan

Representative: EPSON EUROPE B.V.
Address: Prof. J. H. Bavincklaan 5 1183
AT Amstelveen
The Netherlands

Declares that the Product:

Product Name: EPSON Type B Ethernet
Interface Card
Model: C82362/ C82363/ C82364

Conforms to the following Directive(s) and Norm(s):

Directive 89/336/EEC:
EN 55022 Class A
EN 50082-1
IEC 801-2
IEC 801-3
IEC 801-4

April 1998

Y. Ishii
President of EPSON EUROPE B.V.

Contents

Introduction

Enclosed Items	2
Overview of Functions	3
Operating Environment	4
Supported operating systems and network protocols	4
Environment for the Setup Utility	5
EPSON Printers Supported by the Ethernet Card	10
Brief Overview of Installing and Configuring the Ethernet Card	11

Chapter 1 Getting Started

Ethernet Card Operation	1-1
Status lights	1-1
Status sheet button	1-2
Power select switch	1-3
Hardware Installation	1-4
Initializing the Ethernet Card	1-7

Chapter 2 Installing EPSON Net!2

Installing EPSON Net!2 for Windows	2-1
For Windows 95 and Windows NT 4.0	2-2
For Windows NT 3.51	2-3
Installing EPSON Net!2 for Macintosh	2-4

Chapter 3 Setting the IP Address

Overall Steps	3-2
Installing the TCP/IP Protocols in Your PC	3-3
Setting the IP Address Using the EPSON Net!2 for Windows/Macintosh	3-9
Setting the IP Address Using the arp Command	3-12
Changing the IP Address Using EPSON Net!2 for Intranet	3-16

Chapter 4 Using the Ethernet Card with NetWare

Overview	4-1
Applicable systems	4-1
Overall steps	4-2
About mode	4-2
Using NetWare 3.1x	4-4
Instructions for using NetWare	4-4
Using the Ethernet card in Print Server mode	4-4
Using the Ethernet card in Remote Printer mode	4-11
Using NetWare 4.1x	4-18
Instructions for using NetWare	4-18
Using the Ethernet card in Print Server mode	4-19
Using the Ethernet card in Remote Printer mode	4-27
Configuring the Ethernet Card for NetWare Using EPSON Net!2 for Intranet	4-37
Create and Set the Queue Using EPSON Net!2	4-39
Instructions for Using a Dial-Up Network	4-40

Chapter 5 Using the Ethernet Card with Macintosh

Overview	5-1
Applicable systems	5-1
Overall steps	5-2
Configuring the Ethernet Card Using EPSON Net!2 for Macintosh	5-3
Configuring the Ethernet Card for AppleTalk Using EPSON Net!2 for Intranet	5-6

Chapter 6 Using the Ethernet Card with Windows 95

Overview	6-1
Applicable systems	6-1
Overall steps	6-2
Printing with TCP/IP	6-3
Printing method	6-3
Printing with NetBEUI	6-3
Installing NetBEUI protocol	6-3
Configuring the Ethernet card for NetBEUI using EPSON Net!2 for Intranet	6-5
Setting up your printer	6-8

Chapter 7 Using the Ethernet Card with Windows NT

Overview	7-1
Applicable systems	7-1
Overall steps	7-2
Printing with TCP/IP	7-3
Printing via the LPR port for Windows NT 3.51	7-3
Printing via the LPR port for Windows NT 4.0	7-6
Printing with NetBEUI	7-8
Installing NetBEUI protocol in Windows NT 3.51	7-8
Installing NetBEUI protocol in Windows NT 4.0	7-9
Configuring the Ethernet card for NetBEUI using EPSON Net!2 for Intranet	7-10
Setting up your printer	7-12
Using the NET USE command	7-13

Chapter 8 Using the Ethernet Card with OS/2

Overview	8-1
Applicable systems	8-1
Overall steps	8-1
Printing with TCP/IP	8-2
Printing with NetBEUI	8-5

Chapter 9 *Using the Ethernet Card with UNIX*

Setting Up Different UNIX Systems Using the lpr Command . . .	9-1
Setting up for SunSoft Solaris 2.4 or later	9-2
Setting up for SunOS 4.1.4 or later	9-3
Setting up for IBM AIX 3.2.5 or later and 4.1.3 or later	9-4
Setting up for HP-UX 9.05 or later	9-5
Setting up for SCO UNIX 4.2 or later (Open Server)	9-6

Chapter 10 *The EPSON Net!2 Setup Utility*

EPSON Net!2 for Windows	10-1
Menu Bar	10-2
Setting dialog boxes	10-6
EPSON Net!2 for Macintosh	10-11
EPSON Net!2 dialog box	10-11
Setting dialog boxes	10-12
EPSON Net!2 for Intranet	10-14
Opening screen	10-14
Protocol information and Setting screen	10-16
Optional screen	10-18

Chapter 11 *EPSON Status Monitor 2 (Windows only)*

Installing EPSON Status Monitor 2	11-2
Selecting a Printer to Monitor	11-8
Windows 95	11-9
Making Status Monitor Settings	11-11
Starting EPSON Status Monitor 2	11-12
From Windows 95 and NT 4.0	11-12
From Windows NT 3.51	11-13
Basic Operating Procedure	11-14
Main window	11-16
Adding uninstalled network printers	11-21
Getting detailed information about the printer status	11-22
Setting monitoring preferences	11-26

Background Monitoring Icon and Status Alert	11-27
Background monitoring icon	11-27
Status Alert	11-28
Stopping Monitoring	11-29
Uninstalling EPSON Status Monitor 2	11-31
From Windows 95 and NT 4.0	11-31
From Windows NT 3.51	11-33
Tips for Using EPSON Status Monitor 2	11-34
Controlling the packet traffic on the network	11-34
Monitoring printers beyond routers	11-34
About uninstalled network printers	11-35

Chapter 12 Troubleshooting

General Problems	12-1
Problems Specific to Your Network Environment	12-3
Windows NT Environment	12-3
Windows 95 Environment	12-4
NetWare Environment	12-5
Macintosh Environment	12-6
Problems Using EPSON Status Monitor 2	12-7

Appendix A Uninstalling EPSON Net!2

For Windows 95 Windows NT 4.0	A-1
For Windows NT3.51	A-2

Appendix B Specifications

Environmental	B-1
Network Software	B-1
Network Connectors	B-1
Regulatory Approvals	B-2
Reliability	B-2
Regulatory Approvals for AC Adapter Model EU-30	B-2

Introduction

The C82362*/ C82363* /C82364* EPSON® Type B Ethernet Interface Card is a combination of hardware and software that lets you connect an EPSON printer equipped with an optional interface slot directly to your network. Just install the Ethernet card into your printer's optional interface slot (see your printer guide or contact your EPSON dealer for applicable models), and connect it anywhere on your network.

Note:

- ❑ *This manual is written for network administrators, and many of the steps included here require detailed network knowledge and administrator rights. The term network administrator refer to the person responsible for maintaining the customer network. “Administrator” is synonymous with “Supervisor” in this manual.*
- ❑ *The term “the Ethernet card” refers to C82362*, C82363*, and C82364* in this manual.*
- ❑ *The Ethernet card Model C82363* and C82364* do not support Level 1 printers.*

The Ethernet card automatically selects the correct interface when it connects to the network. In addition, it supports IEEE 802.2, IEEE 802.3, Ethernet II, and Ethernet SNAP network protocols.

Because the Ethernet card supports multiple protocols and automatically detects the protocols on your network, you can print from Microsoft® Windows®, Apple® Macintosh®, UNIX, and IBM® OS/2 applications.

Use EPSON Net!2, the utility software provided with your printer, to quickly and easily configure the Ethernet card to use protocols such as Novell® NetWare®, Microsoft IPX/SPX, Microsoft TCP/IP, EtherTalk®, and NetBEUI and TCP/IP for OS/2 Warp and Warp Connect.

Note:

The utility software configures the Ethernet card to work only with the protocols that exist on your network. This does not imply that you can use all of the above mentioned protocols in your network or operating system. The protocols that the Ethernet card can use may vary depending on the operating systems used and network configuration.

Cautions and Notes



Cautions must be observed to avoid damage to your equipment.

Notes contain important information and useful tips on the operation of the Ethernet card.

Enclosed Items

Your interface package includes:

- ❑ The Ethernet card
- ❑ EPSON C82362* /C82363* /C82364* Software CD-ROM including:
 - EPSON Net!2
 - For Windows
 - For Macintosh
 - For Intranet
 - EPSON Status Monitor 2 (Ver.2.0)
 - Internet Explorer
- ❑ This administrator manual
- ❑ Warranty sheet (for U.S. users)
- ❑ A coaxial Y-connector for 10BASE-2 (for C82362* only)
- ❑ An AC adapter Model EU-30 (for C82364* only)



Caution for C82364* :

Only use the AC adapter Model EU-30 to supply power to the Ethernet card Model C82364.*

Note:

Your interface package requires a network connection for the Ethernet card and a host EPSON printer. Use a 10BASE-2 or 10BASE-T cable for C82362, or a Category-5 cable for C82363* and C82364*.*

Overview of Functions

- ❑ The Ethernet card is an interface card that plugs into an EPSON printer's optional interface slot.
- ❑ The Ethernet card Model C82362* automatically selects either 10BASE-2 or 10BASE-T.
- ❑ The Ethernet card Model C82363*/C82364* automatically selects either 10BASE-T or 100BASE-TX when it is connected to a network.
- ❑ You can configure the Ethernet card for TCP/IP, NetWare, or AppleTalk using EPSON Net!2 for Windows/Macintosh.
- ❑ After setting the IP address for the Ethernet card, you can check the settings of the Ethernet card and change them using EPSON Net!2 for Intranet (a utility that runs on your browser).
- ❑ You can configure the Ethernet card for all the protocols supported by the Ethernet card using EPSON Net!2 for Intranet. You can also check the settings.
- ❑ You can select to either enable or disable the protocols, except TCP/IP, from EPSON Net!2 for Intranet.
- ❑ Supported browsers are Microsoft Internet Explorer version 4.0 or later and Netscape Navigator version 3.02 or later.

Operating Environment

Supported operating systems and network protocols

See the following chapters for more information.

- ❑ NetWare 3.1x / 4.1x and IntranetWare Print Server and Remote Printer mode
NetWare 4.1x and IntranetWare (NDS and Bindery Emulation) ▶ Chapter 4
- ❑ Macintosh ▶ Chapter 5
System 7.1, 7.5, 7.5.1, 7.5.2, 7.5.3, 7.5.5
Mac OS 7.6, 7.6.1, 8.0
AppleTalk
- ❑ Windows 95 ▶ Chapter 6
Printing via EPSON Status Monitor 2 (TCP/IP)
Microsoft Windows Network (NetBEUI)
- ❑ Windows NT 3.51 / 4.0 ▶ Chapter 7
LPRport (TCP/IP)
Microsoft Windows Network (NetBEUI)
- ❑ OS/2Warp 3 / 4 (OS/2Warp Connect and OS/2Warp Server) ▶ Chapter 8
lprport (TCP/IP)
Share Printer (NetBEUI)
- ❑ UNIX ▶ Chapter 9
Sun OS 4.1.4 or later: SPARC
SunSoft Solaris 2.4 or later: SPARC and x86
SCO UNIX 4.2 or later
SCO UnixWare 2.01 or later
HP/UX 9.05 or later
IBM AIX 3.2.5 or later and 4.1.3 or later
lpr, ftp: Filtering operation (TCP/IP)

Environment for the Setup Utility

EPSON Net!2 for Windows/ Macintosh

- ❑ EPSON Net!2 for Windows
You can configure the Ethernet card for TCP/IP and NetWare.
Applicable operating systems:
 - Windows 95
 - Windows NT 3.51 Server & Workstation
 - Windows NT 4.0 Server & Workstation

- ❑ EPSON Net!2 for Macintosh
You can configure the Ethernet card for TCP/IP and AppleTalk.
Applicable operating systems:
 - System 7.1, 7.5, 7.5.1, 7.5.2, 7.5.3, 7.5.5
 - Mac OS 7.6, 7.6.1, 8.0

EPSON Net!2 for Intranet

You don't need to install this utility. You can use EPSON Net!2 for Intranet by setting the IP address for the Ethernet card.

- ❑ Microsoft Internet Explorer version 4.0 or later

- ❑ Netscape Navigator version 3.02 or later

You can configure the Ethernet card for TCP/IP, NetWare, AppleTalk, and NetBEUI using EPSON Net!2 for Intranet. You can also check the settings.

Note:

When you use a Microsoft Internet Explorer version earlier than 4.0, you cannot use the Update Home Page under Optional of the Configuration menu of EPSON Net!2 for Intranet, or you cannot scroll properly in Windows NT 3.51.

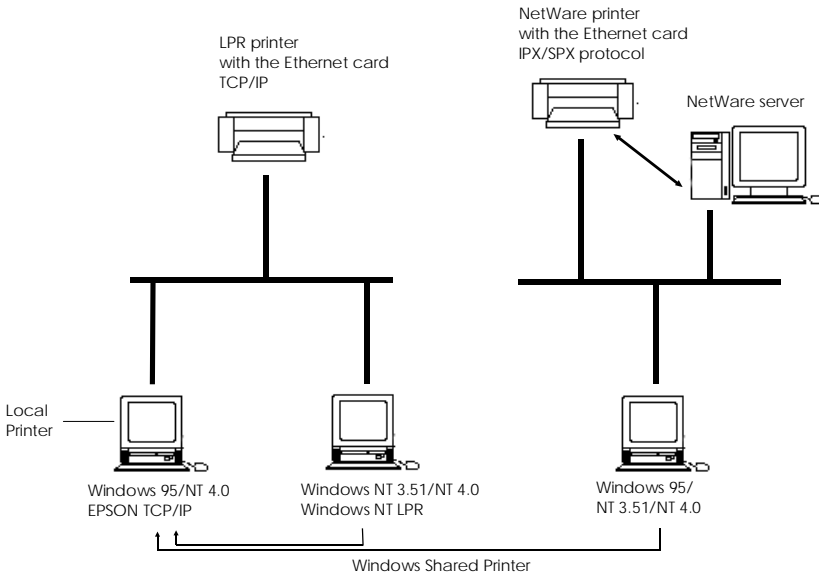
Environment for EPSON Status Monitor 2

Protocols

The protocols that must be installed to run EPSON Status Monitor 2 vary depending on your operating system and printer type. The following table divides printers into three categories: LPR printers, which use TCP/IP (generally in a Windows NT network environment); NetWare printers, which use Novell's IPX/SPX protocol in a NetWare environment; and Windows shared printers. Use this table to determine what protocols you need to install according to your operating system and printer type, then see the corresponding section for your operating system.

	LPR Printer (TCP/IP)	NetWare Printer (IPX/SPX)	Windows Shared Printers
Windows 95	TCP/IP & EPSON ¹	NetWare ³	Not available
Windows NT 3.51	TCP/IP & LPR ²	NetWare ³	TCP/IP & LPR ²
Windows NT 4.0	TCP/IP & LPR ²	NetWare ³	TCP/IP & LPR ²

EPSON¹ = EPSON TCP/IP Printing protocol
 LPR² = Windows NT LPR protocol
 NetWare³ = Necessary protocols already installed



Note:

- ❑ *To set up the Ethernet card for use with TCP/IP, see Chapter 3. To set up the card for use with NetWare, see your NetWare documentation.*
- ❑ *If you configure more than one interface card for one queue, the Status Monitor cannot monitor the printer that is assigned to that queue.*

LPR printers use LPR over TCP/IP as their communication protocol suite, and you must install both protocols to use the Status Monitor to monitor a LPR printer. See Chapter 3 for installing TCP/IP.

NetWare printer protocols are already installed in your NetWare network, so if you have a NetWare printer, skip to “Installing the EPSON Status Monitor 2” on page 11-2. For an explanation of NetWare printer protocols, see your NetWare documentation.

Note for Win 95:

Windows 95 does not come with LPR, so in addition to installing TCP/IP, as described in Chapter 3, you need to install the EPSON TCP/IP printer protocol. The Status Monitor installer program automatically prompts you when to install EPSON TCP/IP. See “Installing EPSON Status Monitor 2” on page 11-2 for instructions.

Windows shared printer (supported under Windows NT only)

To monitor a shared printer from the client through the server machine, select Allow monitoring in the Windows shared printer dialog box when you install EPSON Status Monitor 2 in the server machine.



- ① The port used for monitoring will differ from system to system.
- ② The environment must support normal printing from the shared printer is required.

See the Readme file for more information about support for Windows shared printers.

	LPT1	TCP/IP-LPR
Windows NT 3.51	X	○
Windows NT 4.0	○	○

Local Printer

Connect the printer directly with the printer port of your computer.

Windows 95	Windows NT 3.51	Windows NT 4.0
Bi-directional support is necessary.	Not able to monitor.	Do not need any special settings.

For Windows 95:

You need to set the bi-directional support in the printer's properties dialog box. Click the Details tab and click Spool Settings. Then click the Enable bi-directional support for this printer radio button.

Note:

When you monitor a local printer with Windows 95, use LPT1 for the printer port.

TCP/IP printing printer (Windows 95) / LPR printer (Windows NT 3.51/4.0)

To connect to the printer on the network and share the printer without using the server:

For Windows 95:

Select Yes to enable EPSON TCP/IP printing at the installation of EPSON Status Monitor 2.

For Windows NT 3.51/4.0:

You need to set for TCP/IP printing. See "Installing the TCP/IP Protocols in Your PC" in Chapter 3.

EPSON Printers Supported by the Ethernet Card

The EPSON Ethernet card can be installed in a variety of EPSON laser, ink jet, and dot-matrix printers.

The Ethernet card plugs into the optional interface slot of the following EPSON printers.

For C82362*

FX-880 / 1180 / 2180

DFX-5000+ / 8000

LQ-570+ / 1070+ / 670 / 870 / 1170 / 2070 / 2170

DLQ-3000 / 3000+

EPSON Stylus Pro XL+ / 5000

EPSON Stylus COLOR 800 / 850 / 1520 / 3000

EPSON Stylus 1500

EPL-N1200 / N2000

For C82363*

EPSON Stylus COLOR 1520 / 3000

EPL-N1200 / N2000

For C82364*

EPSON Stylus COLOR 800 / 850

FX-880 / 1180 / 2170

DFX-8500

LQ-670 / 2070 / 2170

DLQ-3000+

Brief Overview of Installing and Configuring the Ethernet Card

You need to go through these steps to configure the Ethernet card. See the following chapters for detailed information.

1. Install the Ethernet card in your printer. See Chapter 1.
2. Install the protocols in your operating system if necessary. See Chapter 3 or later.
3. Install EPSON Net!2. See Chapter 2.
4. Install the EPSON Status Monitor 2 if necessary. See Chapter 11.
5. Install Microsoft Internet Explorer or Netscape Navigator if you use EPSON Net!2 for Intranet. See your browser manual.
6. Set the IP address using EPSON Net!2 or arp command. See Chapter 3.
7. Configure the Ethernet card using EPSON Net!2. See Chapter 4 or later.
8. Configure your operating system to work with the printer. See Chapter 4 or later.

Note:

See “Supported operating systems and network protocols” in this chapter to refer to the supported protocols for each operating system.

Getting Started

This chapter explains the Ethernet card operation and hardware installation.

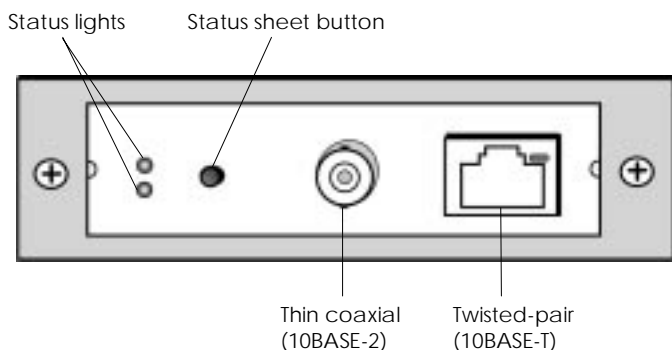
Ethernet Card Operation

The LEDs and the status sheet button can provide you with important information about the operation and configuration of the Ethernet card.

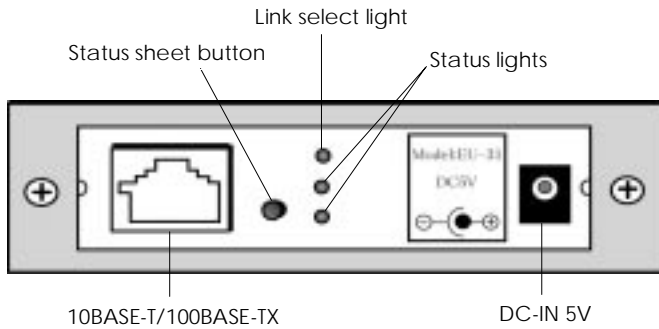
Status lights

The Ethernet card has two status LEDs (1 red and 1 green) that indicate the current operating status of the Ethernet card when you first turn on the printer, during normal operation, and when errors occur. The Ethernet card Model C82363* and C82364* also has a link select LED (Yellow light) to show the connection status, whether 10BASE-T or 100BASE-TX is used.

For C82362*



For C82363* and C82364*



Here is a brief explanation of the two status lights:

Red	Green	Status
flash simultaneously		Initializing status at power on or reset
Off	flash slowly	Printing data or the status sheet
Off	flash rapidly	Sending and receiving packets
Off	On	Normal ready status
On	Off	Error status

The link select light (yellow light) on C82363*/C82364* shows the connection status.

Light	Status
On	Connect with 100BASE-TX
Off	Connect with 10BASE-T

Status sheet button

The first time you use the Ethernet card after installing it in a printer or reinstalling it in a new printer, turn on the printer while pressing and holding down the status sheet button for about five seconds to initialize the Ethernet card.

Before you start configuring the Ethernet card, be sure to press the status sheet button on the card for about three seconds to print the current setting status sheet.

The status sheet will not print if the printer has started printing, if it is off line, or if it is not ready to print.

Note:

If the printer does not print the status sheet, first make sure that the printer is on line and no print jobs are being processed, then wait a minute. If it still does not print the status sheet, turn it off, wait until the status lights go out, and then turn it on again.



Caution:

After turning off the printer, wait until the status lights go out before turning it back on; otherwise the Ethernet card may not work correctly.

Power select switch

There is a power select switch on the board of the Ethernet card Model C82363* and C82364*.

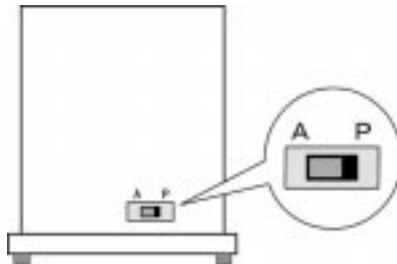
The default position is at P for C82363*, and at A for C82364*.



Caution:

Do not change the switch. You must use the default position. Otherwise, the Ethernet card won't work correctly.

The power select switch for Model C82363*



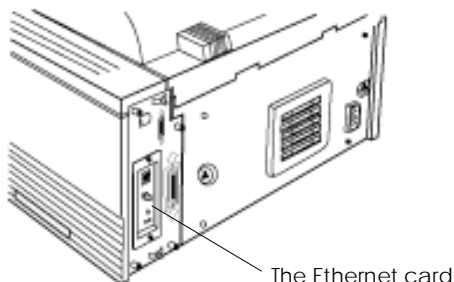
Hardware Installation

This section explains how to install the Ethernet card in your printer. You must install the interface card in the printer, connect it to the network, and turn on the printer before you can set up the software.

① *Installing the Ethernet card in your printer*

Before installing the Ethernet card, see the section on using printer options in your printer manual for further specific instructions on installing the optional interface card.

1. Turn off the printer.
2. Remove the printer's interface slot cover.
3. Insert the card into the optional interface slot of an EPSON printer, and fix the card in the slot using the screw.
4. If you are using the Ethernet card Model C82364*, connect the AC adapter (Model EU-30) to the Ethernet card and plug the adapter into a wall outlet.



5. Turn on the printer while pressing and holding down the status sheet button for about five seconds to initialize the Ethernet card.

**Caution:**

When you install or uninstall the Ethernet card, you must turn off the printer and unplug the AC adapter from the wall outlet to prevent electric shock.

② Connecting the network cable

Once the card is installed in your printer, you must attach the network cable to the interface.

The Ethernet card can detect which kind of cable is attached. You do not need to make any hardware or software settings to specify the cable type. However, you must not attach more than one cable at a time.

10BASE-2 connector (C82362* only)

Connect the Ethernet thin coaxial (10BASE-2) cable to the card using the supplied Y-connector.

10BASE-T connector (C82362* only)

Connect the Ethernet twisted-pair (10BASE-T) cable to the card using the RJ-45 connector.

10BASE-T/100BASE-TX connector (C82363*/C82364*)

Connect the Ethernet twisted-pair (Category-5) cable to the card using the RJ-45 connector. The Category-5 cable can use for both 10BASE-T and 100BASE-TX.

DC-IN connector (C82364* only)

Connect the AC adapter to the card.

**Caution:**

Attach only one cable at a time.

③ *Making printer settings using the printer's control panel*

Some EPSON printers require you to use the printer's control panel to select the interface you plan to use. See your printer manual for instructions on making the necessary interface settings.

Note:

If your printer automatically selects the interface and has been set to the Auto mode, it is not necessary to make the interface settings.

④ *Printing status sheets*

Press and hold down the status sheet button for about three seconds to print a status sheet.

If a status sheet prints, the Ethernet card has been installed correctly.



Caution:

- ❑ *After turning off the printer, wait until the status lights go out before turning it back on; otherwise the Ethernet card may not work correctly.*
- ❑ *You have to wait until the status lights go out before pulling the card out of the printer; otherwise the Ethernet card may not work correctly.*

Note:

After installing the Ethernet card, some printers take more than 30 seconds to start initializing the Ethernet card.

Initializing the Ethernet Card

In the following cases, you have to initialize the Ethernet card.

- ❑ *The first time you turn on the printer after installing the Ethernet card*
- ❑ *When you install the Ethernet card in another printer*
- ❑ *When the utility does not show the Ethernet card because of wrong settings in the Ethernet card*

Follow these steps to initialize the Ethernet card.

1. Make sure that the printer with the Ethernet card is turned off.
2. Turn on the printer while pressing and holding down the status sheet button for about five seconds.



status sheet button

3. When the red and green status lights on the Ethernet card start to flash simultaneously, you can remove your finger from the status sheet button (the lights show the Ethernet card is being initialized). Initialization is complete when the status lights stop flashing.

4. After initialization is complete, press the status sheet button to print the status sheet. Check the information on the status sheet.

Note:

You can also initialize the Ethernet card using EPSON Net!2. See Chapter 10 for more information.

Installing EPSON Net!2

To use the Ethernet card installed in Chapter 1 for Windows 95, Windows NT, or Macintosh, you need to install the setup utility software, EPSON Net!2 for Windows or EPSON Net!2 for Macintosh, in your computer.

You can configure the Ethernet card for TCP/IP, NetWare, or AppleTalk using EPSON Net!2. By setting the IP address for the Ethernet card, you can also configure the Ethernet card using EPSON Net!2 for Intranet, the setup utility that runs on your browser.


Installing EPSON Net!2 for Windows

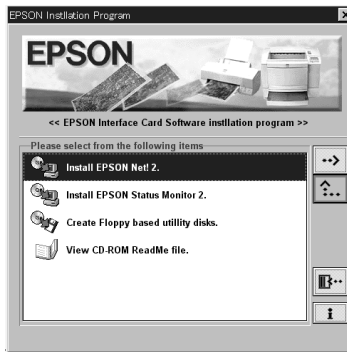
Note:

If you add or delete the protocols or services for the operating system after installing EPSON Net!2 for Windows, EPSON Net!2 for Windows will not start. If this happens, uninstall EPSON Net!2 for Windows, and then reinstall it. If you haven't installed TCP/IP or NetBEUI, see Chapter 3 for installing TCP/IP protocol, and see Chapter 6 or 7 for installing NetBEUI protocol.

Follow these steps to install EPSON Net!2.

For Windows 95 and Windows NT 4.0

1. Insert the Software CD-ROM shipped with this package in the CD-ROM drive.
2. The Installer screen will start automatically. If the screen does not appear, choose Run from the Start menu. Type D:\EPSETUP (if the CD-ROM is in drive D) and click OK.
3. Click the Install EPSON Net!2 on the installer screen, and then click  button.




4. Follow the on-screen instructions.



5. After installation is complete, click Start, point to Program and EPSON Net!2, then click EPSON Net!2 to start the utility.

For Windows NT 3.51

1. Insert the Software CD-ROM shipped with this package in the CD-ROM drive.
2. Choose Run from the File menu of the Program Manager dialog box. Type D:\EPSETUP (if the CD-ROM is in drive D) and click OK.
3. Click the Install EPSON Net!2 on the installer screen, and then click  button.
4. Follow the on-screen instructions.



5. After installation is complete, click the EPSON Net!2 icon in the EPSON Net!2 window to start the utility.

Installing EPSON Net!2 for Macintosh

To install EPSON Net!2 for Macintosh, follow these steps:

1. Insert the Software CD-ROM shipped with this package in the CD-ROM drive.
2. Double-click the EPSON Net!2 folder.
3. Drag the EPSON Net!2 icon from the CD-ROM to your hard disk.
4. Double-click the EPSON Net!2 icon on your hard disk to start the utility.



Setting the IP Address

To use the Ethernet card with TCP/IP, you need to set its IP address using EPSON Net!2 or the arp or ping command.

The IP address should be set in the following cases:

- When configuring the Ethernet card using EPSON Net!2 for Intranet
- TCP/IP (via EPSON Status Monitor 2) printing from Windows 95
- TCP/IP (LPR port) printing from Windows NT
- TCP/IP (lpr port) printing from OS/2 Warp and UNIX

Overall Steps

The following are the overall steps for setting the IP address. Go to the indicated chapters for more information.

1. Install TCP/IP protocol on the operating systems, if necessary. See page 3-3.
2. Install EPSON Net!2. See Chapter 2.
3. Set the IP address using EPSON Net!2 for Windows / Macintosh or the arp command. See page 3-9.

Note:

- ❑ *The first time you set the IP address for the Ethernet card after installing the Ethernet card, use EPSON Net!2 for Windows / Macintosh to set the IP address (you cannot set the IP address using EPSON Net!2 for Intranet).*
 - ❑ *EPSON Net!2 cannot be used for OS/2 or UNIX. When you set the IP address for OS/2 or UNIX, use the arp or ping command.*
4. Set up the printer. See Chapter 6 to 9.

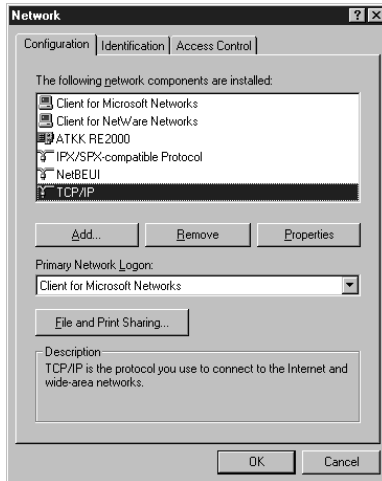
Installing the TCP/IP Protocols in Your PC

Before using the Ethernet card with TCP/IP, you must make sure that the TCP/IP protocol is installed on your operating system. After it is installed, you can use the computer to configure the Ethernet card for use with TCP/IP.

For Windows 95

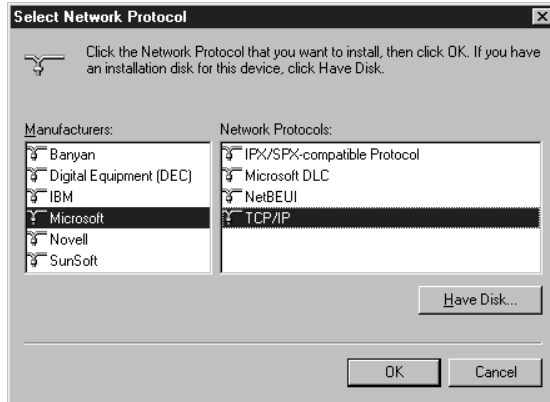
Follow the steps below to install TCP/IP.

1. Double-click the Network icon in the Control Panel, and check if TCP/IP is in the list of installed network components on the Configuration menu.



2. If TCP/IP is not in the list, click Add.
3. Select Protocol and click Add.

4. Select Microsoft from the Manufacturers list and TCP/IP from the Network protocols list. Then click Ok.



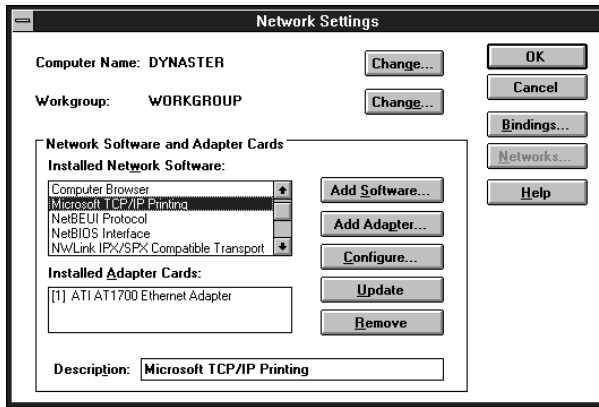
5. Double-click TCP/IP on the Configuration menu to open the TCP/IP Properties dialog box. Make necessary settings such as the IP address. Ask your network administrators for your IP address.

For Windows NT 3.51/4.0

Follow these steps below to install LPR software in Windows NT. If you have already installed the TCP/IP Network Print Service from TCP/IP Protocol and Related Components, you can skip these steps.

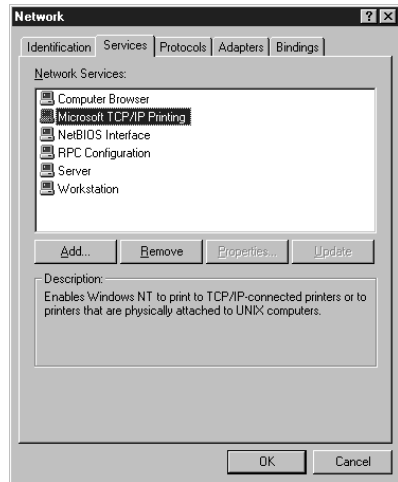
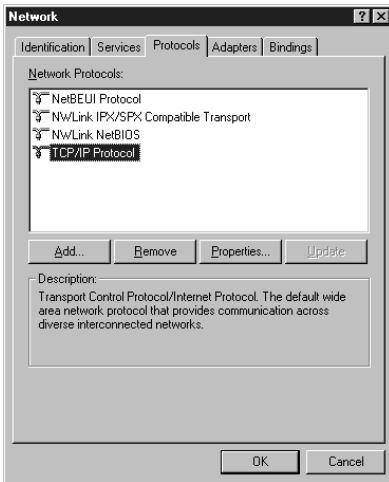
1. Double-click the Network icon in the Control Panel to check if the TCP/IP Protocol and Microsoft TCP/IP Printing are installed. If they are already installed, you can skip to the next section (“Setting the IP Address Using EPSON Net!2 for Windows/Macintosh”).

Windows NT 3.51



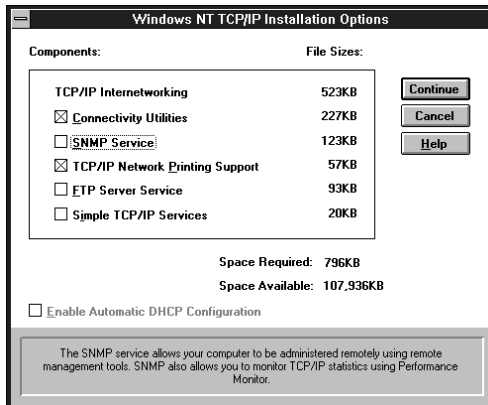
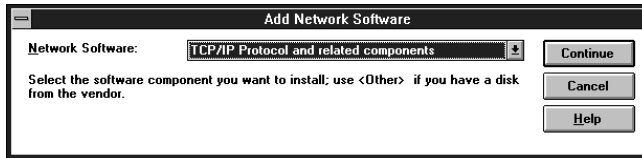
3

Windows NT 4.0



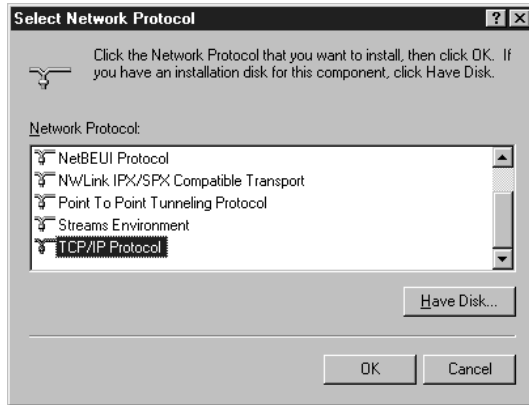
2. If the TCP/IP protocol and Microsoft TCP/IP Printing are not listed, click Add Software (for NT 3.51) or Add (for NT 4.0) to add them.

Windows NT 3.51

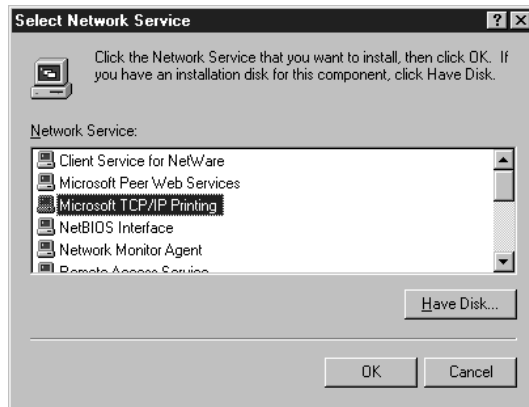


Check Connectivity Utilities and TCP/IP Network Printing Support

Windows NT 4.0

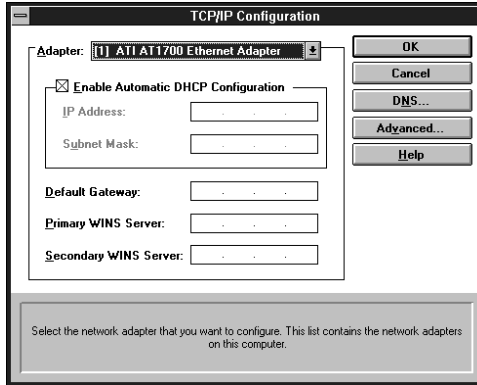


Select TCP/IP Protocol



Select Microsoft TCP/IP Printing

3. If you continue installing the TCP/IP protocol, the TCP/IP Configuration dialog box appears, and you can set the IP address.



Notes:

- ❑ **NT 3.51**
To check the IP addresses which have already been assigned, select TCP/IP Protocol in the Network Settings dialog box. Click the Configure button to open the TCP/IP Configuration dialog box.
 - ❑ **NT 4.0**
To check the IP addresses which have already been assigned, click the Protocols tab in the Network dialog box, select TCP/IP Protocol, and then click the Properties button.
4. When the installation is completed, check items such as the IP address to make sure they have been entered correctly. Ask your network administrator for your IP address.

Setting the IP Address Using the EPSON Net!2 for Windows/Macintosh

You can set the IP address for the Ethernet card using EPSON Net!2 in Windows 95 and Windows NT with TCP/IP or IPX.

Also, you can set the IP address for the Ethernet card using EPSON Net!2 in Macintosh with TCP/IP or AppleTalk.



Caution:

Once you make changes to the Ethernet card, you must wait until the changes have been completely set before turning off or sending data to the printer.

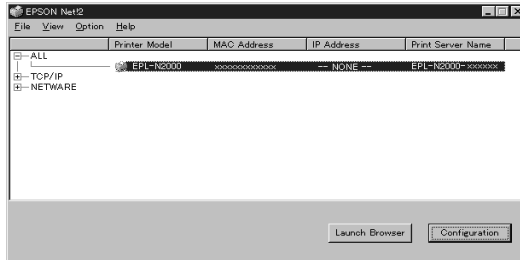
Note:

- Before configuring the Ethernet card using EPSON Net!2 for Intranet (a utility that runs on your browser), you need to set the IP address for the Ethernet card using EPSON Net!2 for Windows / Macintosh.*
- When using TCP/IP, it shows the Ethernet card information of the same segment as a default. To see the Ethernet card information of the other segment, see the last page of this section on page 3-12.*
- Ask your network administrator for the IP address and the default gateway of the Ethernet card to set.*

Here is an example of setting the IP address using EPSON Net!2, running under Windows 95.

1. Make sure Windows 95 is running, the Ethernet card is connected to the network, and the printer is turned on.
2. Click Start, point to Programs and EPSON Net!2, then click EPSON Net!2.

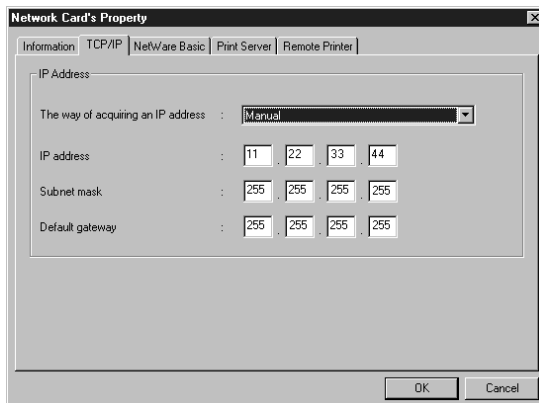
3. Click the printer where you want to set the IP address, and then click the Configuration button.



Note:

- ❑ *If you have connected more than one printer with the same type of Ethernet card to the network, you can distinguish the cards by pressing the status sheet button on the Ethernet card plate to print a status sheet for each printer, or by checking the sticker on the Ethernet card. Then check the MAC address.*
- ❑ *If the IP address is set to the default IP address, the printer model might not appear.*

4. Click the TCP/IP tab to display the TCP/IP menu.



5. Select The way of acquiring an IP address from the following: Manual, RARP, BOOTP, or DHCP.

Note:

To use RARP, BOOTP, or DHCP, the server for each protocol is necessary. If there is no corresponding server, do not use them. See your server manual for the settings.

6. Assign the IP address, the Subnet mask, and the Default gateway. If you select DHCP to acquire an IP address, you cannot assign the IP address, the subnet mask, or the default gateway.

Note:

- If you will be using EPSON Net!2 for Intranet (a utility that runs on your browser), you must assign an IP address manually here.*
 - The default IP address is 11.22.33.44, and the default subnet mask and the default gateway are 255.255.255.255. If you will be using EPSON Net!2 for Intranet, change the default IP address because these settings become invalid.*
 - If there are servers or routers which become a gateway, type the gateway address. If there is no gateway, type the IP address of your computer.*
7. Click OK to save the new settings. Updating is complete when the message "Configuration is successfully done" appears.



Caution:

After clicking OK, you must wait a while before turning off the printer because the new settings are sent to the Ethernet card.

To get the interface card's information of the other segments

To get the interface card's information of the other segments, use the Subnet Settings of the Option menu of EPSON Net!2 for Windows.

1. Type the subnet address you want to search from 0 to 255 at the box.
2. Click Add to add the subnet in the Subnet List box. The interface cards in the subnet address you added are searched and are listed on the EPSON Net!2 dialog box.
3. When you want to delete the subnet address from the list, click the subnet address in the Subnet List box, and then click Delete.
4. Click OK to exit.

Setting the IP Address Using the arp Command

If you are using UNIX or OS/2, you can use the arp command to set the IP address of the Ethernet card, and the ping command to check that you have set it correctly. You can also use these commands using Windows 95 or Windows NT, if you have correctly installed TCP/IP networking on these systems.

Before you start, you will need the following information:

- ❑ A valid IP address for the Ethernet card. Ask your system administrator for an IP address which will not cause conflicts with any other device on the network. If you are the system administrator, choose an address within your subnet which will not conflict with any other device.

- ❑ The MAC (Ethernet hardware) address of the Ethernet card. This is the hardware serial number of the card, which cannot be changed. You can check the MAC address on the status sheet.

Note:

To print the status sheet, press the status sheet button on the Ethernet card for about three seconds while the printer is turned on.

- ❑ If the host from which you will be setting up the Ethernet card is on a different LAN segment, make sure that the gateway to the Ethernet card (router or routing host) is correctly configured on your machine.

Checking the LAN

First, you need to check that the Ethernet card can be reached from the host.

1. If you have previously set the IP address of the Ethernet card to some value other than the factory default, go to step 2. Otherwise, go to step 3.
2. Re-initialize the Ethernet card by turning off the printer, waiting at least 10 seconds, and turning on the printer again while pressing and holding down the status sheet button for about five seconds. A status sheet is printed.
3. The default IP address of the Ethernet card is 11.22.33.44 (decimal). Check that the card is reachable by “pinging” it from the command line:
ping 11.22.33.44

4. If the card is reachable, you see results something like the following (the exact form of the message depends on your operating system, and the times probably vary from those shown here):

```
64 bytes from 11:22:33:44:icmp_seq=0. Time=34.ms
```

```
64 bytes from 11:22:33:44:icmp_seq=1. Time=4.ms
```

```
64 bytes from 11:22:33:44:icmp_seq=2. Time=4.ms
```

```
64 bytes from 11:22:33:44:icmp_seq=3. Time=4.ms
```

5. If the card is unreachable, you may see something like:

```
PING 11:22:33:44:56 data bytes
```

until you press Ctrl-C, when you may see something like:

```
11:22:33:44 PING Statistics
```

```
3 packets transmitted, 0 packets received,
```

```
100% packet loss
```

Again, the exact working of the message you see may differ from this, depending on your operating system. If you cannot “ping” the Ethernet card, you should check the following:

- The address is correct in the ping command.
- The Ethernet connection to the card and to the host has been made correctly, and all hubs, routers, etc. are switched on. If you are using 10BASE-2, make sure that both ends of the segment are terminated.
- The Ethernet card is operating normally (red LED off, green LED on).

Setting and checking the new IP address

To set the new IP address which you have obtained from your system administrator, use the arp command, with the -s flag (create ARP entry).

Note:

In the following, we will assume that the MAC address of your Ethernet card is 00:00:48:93:00:00 (hexadecimal), and that the IP address which you will be assigning is 192.135.223.6 (decimal). Substitute your values for these addresses when you type in the commands.

1. From the command line, type:
Example: arp -s 192.135.223.6 00:00:48:93:00:00
2. You can now check the new IP address, by “pinging” it:
Example: ping 192.135.223.6
3. The Ethernet card should now respond to the ping. If it does not, you may have mistyped the MAC address or the IP address in the arp -s command. Double-check and try again. If all else fails, re-initialize the Ethernet card and try again.

Note:

When you set the IP address of the Ethernet card in this way, you cannot change the subnet mask or gateway setting of the Ethernet card. You must use the EPSON Net!2 running on Windows (95 or NT), or Macintosh to change these parameters.

Changing the IP Address Using EPSON Net!2 for Intranet

After you have configured the Ethernet card for TCP/IP using EPSON Net!2 for Windows/Macintosh or the arp command, you can make changes to the IP address or other settings using EPSON Net!2 for Intranet (a utility that runs on your browser).



Caution:

- ❑ *You cannot use EPSON Net!2 for Windows/Macintosh and EPSON Net!2 for Intranet at the same time.*
- ❑ *Once you make changes to the Ethernet card by EPSON Net!2 for Intranet, wait until it completes the settings before turning off or sending data to the printer.*

Note:

- ❑ *See “Setting the IP Address Using EPSON Net!2 for Windows/Macintosh” for the cautions and notes for each step.*
- ❑ *There are some restrictions on the characters you can use depending on your browser. For details, see your browser or OS manual.*

Follow the steps below to make changes to the IP address using EPSON Net!2 for Intranet.

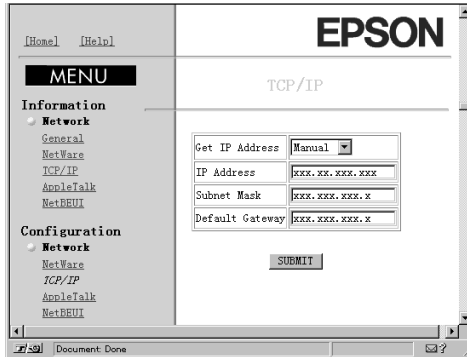
Before you go through these steps, make sure to assign the IP address for the Ethernet card on the TCP/IP menu of EPSON Net!2 for Windows/Macintosh.

1. Click the printer you want to configure from the list in the EPSON Net!2 dialog box and click the Launch Browser button.

Or, run your browser, and type the IP address of the Ethernet card directly. Do not run EPSON Net!2 for Windows/Macintosh with the browser.

URL: `http:// <the IP address of the Ethernet card> /`

- The browser will start running.
- Click TCP/IP under Network on the Configuration menu to view the TCP/IP setting screen.



- Select Get IP Address from the following: Manual, RARP, BOOTP, or DHCP.
- Type the IP address, the Subnet Mask, and the Default Gateway.
- Click the SUBMIT button to update the settings. If you have set the password in the Password under Optional, you need to type the password to update the settings.
- If the message "Configuration change is complete!" appears on your screen, the update is complete. Follow the message appears on your screen to enable the changes by pressing RESET or turning your printer off and on.

Note:

Since the IP address you set becomes available by pressing the RESET button or turning your printer off and on, you need to restart EPSON Net!2 for Intranet. Enter the new IP address and restart EPSON Net!2 for Intranet.

Using the Ethernet Card with NetWare

This chapter explains how to configure the Ethernet card for NetWare to use the printer on a NetWare environment, and how to configure the Ethernet card in one of two operating modes, Print Server or Remote Printer with EPSON Net!2. This chapter explains the steps for each mode.

Overview

Applicable systems

- Server environment

NetWare 3.1/3.11/3.12 (Bindery)

NetWare 4.1/4.11 (NDS, Bindery emulation)

IntranetWare (NDS, Bindery emulation)

- Client environment

The client environment must be supported by NetWare. It is possible to use the printer driver mounted on the Ethernet card.

Overall steps

The following are the overall steps for using NetWare. Go to the indicated chapters for more information.

1. Install EPSON Net!2. See Chapter 2.
2. Set the IP address when you use EPSON Net!2 for Intranet. See Chapter 3.
3. Set up the printer environment using NetWare PCONSOLE or Nwadmin.
4. Set the NetWare mode using EPSON Net!2.

About mode

You can choose the mode from Print Server, Remote Printer, or Standby mode. You should select the Print Server mode unless the number of users exceeds the limit. In this case, you should configure the Ethernet card in the Remote Printer mode.

Features of the modes are described below.

Print Server mode:

- High-speed printing by controlling printing directly
- Use of the NetWare user account
- Ability to register up to 32 print queues

Remote Printer mode:

- A NetWare user account is not required.
- A print server is necessary for controlling the remote printer.
- Printing speed is slower.
- Ability to attach up to 16 printers for NetWare 3.1x, and up to 255 for NetWare 4.1x.

Note:

When you turn on the printer, the user account is temporarily used in Remote Printer mode. If there is no room in the user account, turn on the printer before connecting the client to the network.

Standby mode (factory default mode):

The Standby mode is a default mode. With this mode, all NetWare related functions will stop. Use Standby mode when not using the Ethernet card in the NetWare environment.

Using NetWare 3.1x

Instructions for using NetWare

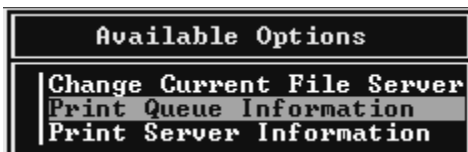
- ❑ **Printing a text file**
When you print a text file using the NPRINT command of NetWare or DOS redirection, misconversion or a gap in characters might occur depending on the client environment.
- ❑ **PCONSOLE limitation**
To set up the Ethernet card in Print Server mode, you cannot use the Print Server status display control by PCONSOLE.
- ❑ **Time required to recognize the Ethernet card**
It takes two minutes or less for the NetWare server to recognize the Ethernet card after turning on the printer. During this start-up time, EPSON Net!2 and the status sheet do not show the correct information.

Using the Ethernet card in Print Server mode

See the following sections to configure the Ethernet card in Print Server mode.

Creating print queues in a file server

1. From any NetWare client, log in to the network with supervisor privileges.
2. Run PCONSOLE. From the Available Options screen, select Print Queue Information and press Enter.



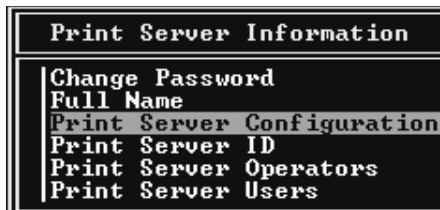
3. Press the Insert key on your keyboard and enter the print queue name. Press Enter .
4. From the Print Queue list, select the print queue name that you just entered and press Enter. From the Print Queue Information list, select Queue Users and press Enter. Next, select EVERYONE from the list. If EVERYONE is not in the list, press Insert and select EVERYONE from the queue users list.

Creating a print server

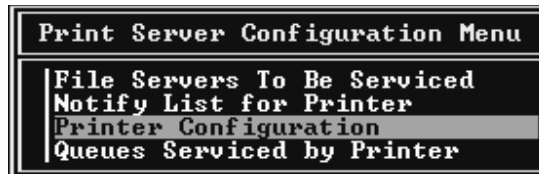
1. From the Available Options screen, select Print Server Information and press Enter.



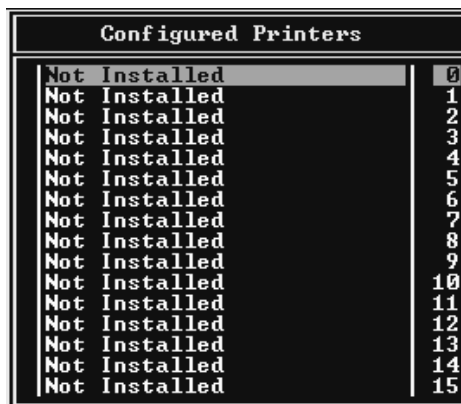
2. Press the Insert key on your keyboard and type the print server name. Press Enter. It is a good idea to write down the print server name for later use.
3. From the Print Server list, select the print server name that you just entered and press Enter. Then, from the Print Server Information list, select Print Server Configuration and press Enter.



4. Select Printer Configuration from the Print Server Configuration Menu and press Enter.



5. From the Configured Printers list, select Not Installed (port number = 0) and press Enter.



- From the Printer configuration screen, type the printer name. Then, highlight Type and press Enter. Select Local Parallel, LPT1.

```
Printer 0 configuration
Name: Printer 0
Type: Local Parallel, LPT1
Use interrupts: Yes
IRQ: 7
Buffer size in K: 3
Starting form: 0
Queue service mode: Change forms as needed
Baud rate:
Data bits:
Stop bits:
Parity:
Use X-On/X-Off:
```

Note:

Make sure to select Local Parallel, LPT1.

- Press Esc; then press Enter to save changes.
- Press Esc.
- Select Queues Serviced by Printer from the Print Server Configuration menu and press Enter.

```
Print Server Configuration Menu
File Servers To Be Serviced
Notify List for Printer
Printer Configuration
Queues Serviced by Printer
```

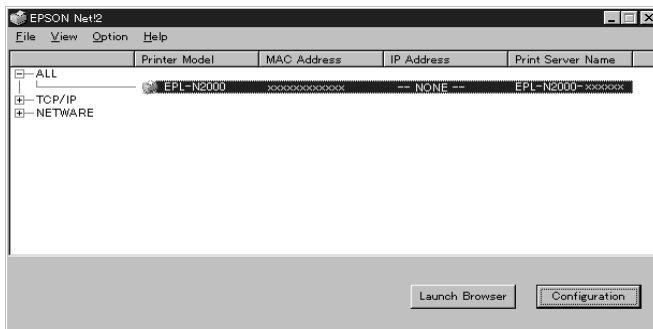
- Select the printer that you want to use from the Defined Printers list and press Enter.
- Press the Insert key and assign a queue to the print server port from the Available Queues list.

12. Specify the priority level between 1 to 10. One is top priority.
13. Press ESC to exit PCONSOLE.

Configuring the Ethernet card in Print Server mode

This section explains how to set up EPSON Net!2.

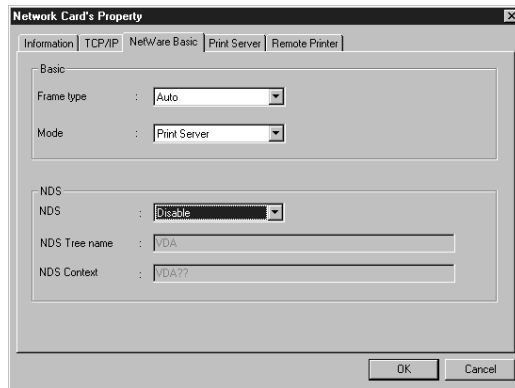
1. Turn on the printer with the Ethernet card.
2. Run EPSON Net!2 from the Start menu.
3. The EPSON Net!2 dialog box appears showing a list of interface cards on the network. Select the printer you want to configure from the list and click Configuration.



Note:

- ❑ *If you have connected more than one printer with the same type of Ethernet card to the network, you can distinguish the cards by pressing the status sheet button on the Ethernet card plate to print a status sheet for each printer, or by checking the sticker on the Ethernet card. Then check the MAC address.*
- ❑ *If the IP address is set to the default IP address, the printer model might not appear.*

4. Click the NetWare Basic tab and make the following settings.



Frame type:

You can select one from the following:
Auto, Ethernet 802.2, Ethernet 802.3, Ethernet II, or
Ethernet SNAP.

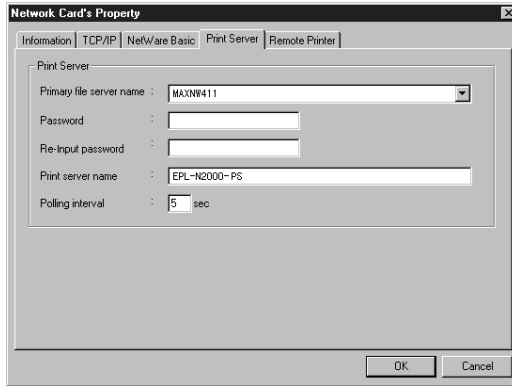
Mode:

Select Print Server from the following:
Print Server, Remote Printer, or Standby.

NDS:

Select Disable.

5. Click the Print Server tab and make the following settings.



Primary file server name:

Select the server where you created the queue.

Password:

Type any new password up to 19 characters. The characters you entered appear as “*”.

Print server name:

Type any new name up to 47 characters. The default name is shown below.

(Printer name) - (last 6 digits of the serial number)

Polling interval:

Set the polling time from 5 to 90 seconds.

6. Click OK to save changes. If the message “Configuration is successfully done” appears on your screen, updating is complete.



Caution:

Once you make changes to the Ethernet card, you must wait until it completes the settings before turning off the printer.

7. Select the Connection Information of File Server Console's MONITOR.NLM, and check if the print server name assigned to the Ethernet card has been logged in to the Active Connections list. It takes five minutes or less to complete this.

Using the Ethernet card in Remote Printer mode

See the following sections to configure the Ethernet card in Remote Printer mode.

Creating print queues in a file server

1. From any NetWare client, log in to the network with supervisor privileges.
2. Run PCONSOLE. From the Available Options screen, select Print Queue Information and press Enter.



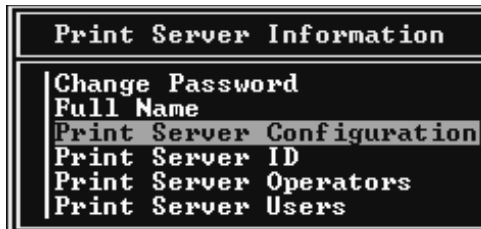
3. Press the Insert key on your keyboard and enter the print queue name. Press Enter.
4. Select the print queue name that you just entered and press Enter. From the Print Queue Information list, select Queue Users and press Enter. Next, select EVERYONE from the list. If EVERYONE is not in the list, press Insert and select EVERYONE from the queue user list.

Creating a print server

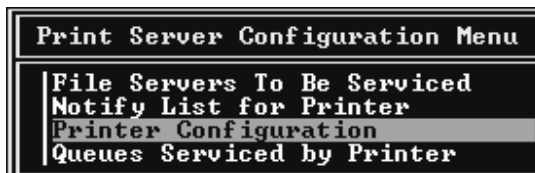
1. From the Available Options screen, select Print Server Information and press Enter.



2. Press the Insert key on your keyboard and enter the print server name. Press Enter. It is a good idea to write down the print server name for later use.
3. From the Print Server list, select the print server name that you just entered and press Enter. Then, from the Print Server Information list, select Print Server Configuration and press Enter.



4. Select Printer Configuration from the Print Server Configuration Menu and press Enter.



- From the Configured Printers list, select Not Installed (port number = 0) and press Enter.

Configured Printers	
Not Installed	0
Not Installed	1
Not Installed	2
Not Installed	3
Not Installed	4
Not Installed	5
Not Installed	6
Not Installed	7
Not Installed	8
Not Installed	9
Not Installed	10
Not Installed	11
Not Installed	12
Not Installed	13
Not Installed	14
Not Installed	15

4

- From the Printer configuration screen, type the printer name. Then, highlight Type and press Enter. Select Remote Parallel, LPT1.

```
Printer 0 configuration
Name: Printer 0
Type: Remote Parallel, LPT1

Use interrupts:      Yes
IRQ:                7

Buffer size in K:   3

Starting form:      0
Queue service mode: Change forms as needed

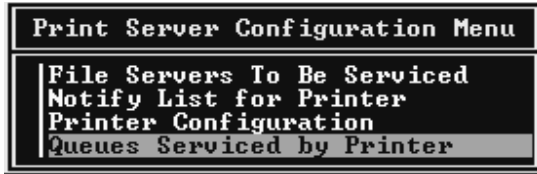
Baud rate:
Data bits:
Stop bits:
Parity:
Use X-On/X-Off:
```

Note:

Make sure to select Remote Parallel, LPT1.

- Press Esc; then press Enter to save changes.

8. Select Queues Serviced by Printer from the Print Server Configuration menu and press Enter.

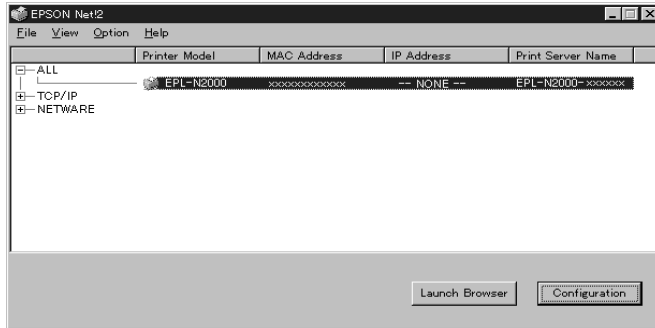


9. Select the Printer that you want to use from the Defined Printers list and press Enter.
10. Press the Insert key and assign a queue to the print server port from the Available Queues list.
11. Specify the priority from 1 to 10. One is top priority.
12. Press Esc to exit PCONSOLE.

Configuring the Ethernet card in Remote Printer mode

1. Run a print server.
 - For a file server as a print server
>LOAD PSERVER print server name
 - For a dedicated print server
> PSERVER print server name
2. Run EPSON Net!2 from the Start menu.

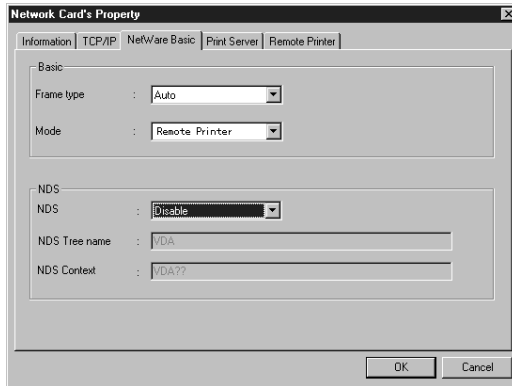
3. The EPSON Net!2 dialog box appears showing a list of the interface cards on the network. Select the printer you want to configure from the list and click Configuration.



Note:

- If you have connected more than one printer with the same type of Ethernet card to the network, you can distinguish the cards by pressing the status sheet button on the Ethernet card plate to print a status sheet for each printer, or by checking the sticker on the Ethernet card. Then check the MAC address.
- If the IP address is set to the default IP address, the printer model might not appear.

4. Click the NetWare Basic tab and make the following settings.



Frame type:

You can select one from the following: Auto, Ethernet 802.2, Ethernet 802.3, Ethernet II, or Ethernet SNAP.

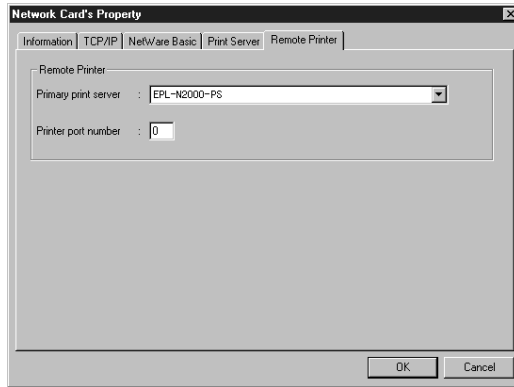
Mode:

Select Remote Printer from the following: Print Server, Remote Printer, or Standby.

NDS:

Select Disable.

5. Click the Remote Printer tab and make the following settings.



Primary print server:

Select the print server name you have created.

Printer port number:

Type the same port number you assigned to the print server (type 0).

6. Click OK to save changes. If the message "Configuration is successfully done" appears on your screen, updating is complete.



Caution:

Once you make changes to the Ethernet card, you must wait until it completes the settings before turning off the printer.

7. Switch to the Print Server screen of the File Server Console, and check if the status is standing by the job.

Instructions for using NetWare

Printing a text file

When you print a text file using the NPRINT command of NetWare or DOS redirection, misconversion or a gap in characters might occur depending on the client environment.

Bindery and NDS

- ❑ When printing on the network printer from the NDS non-correspondence client (Bindery correspondence), it is necessary to make the object related to the print right under the Bindery context in the directory tree.
- ❑ Bindery context path can be confirmed from the server console by the SET BINDERY CONTEXT command.
- ❑ If the bindery context path has not been set, or if you want to use the print environment of another context from the NDS non-correspondence client, it is necessary to specify the context for the bindery context. Use SET BINDERY CONTEXT command to set the context in the AUTOEXEC.NCF file.

See your Netware 4.1x manual for more information.

IPX routing protocol "NLSP"

It is possible to set the IPX routing protocols "NLSP" from NetWare4.1x; however, the Ethernet card does not support NLSP. RIP/SAP controls the communication.

You can select the routing protocol from a) NLSP with RIP/SAP Compatibility or b) RIP/SAP Only. If you arbitrarily remove the bind of RIP or SAP when NLSP with RIP/SAP Compatibility is specified, the Ethernet card is not able to communicate with the file server and NDS. (Reference: "Protocols" and "Bindings" in the task of the Utility INETCFG.)

Time required to recognize the Ethernet card

It takes two minutes or less for the NetWare server to recognize the Ethernet card after turning on the printer. During this start-up time, the EPSON Net!2 and the status sheet do not show the correct information.

Using the Ethernet card in Print Server mode

This section explains how to configure the Ethernet card in Print Server mode using the Nwadmin tool of NetWare 4.1x.

If the client who wants to print does not correspond to NDS, make the object in the Bindery context.

1. Log in to the NDS (or Bindery context) with Admin or supervisor privileges.
2. Run the administrator tool (Nwadmin).

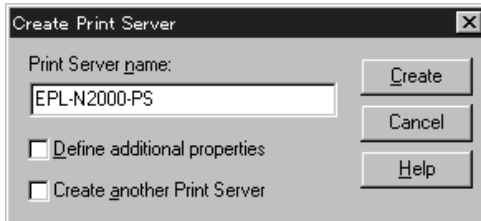
3. Create a printer:

Click the directory context icon (or Bindery context), and select Object, then Create, and then Printer. Type the printer name and click Create.



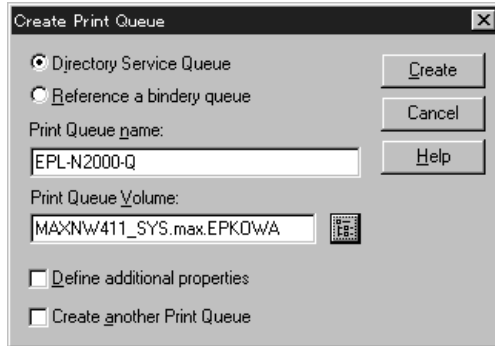
4. Create a print server:

Click the directory context icon (or Bindery context), and select Object, then Create, and then Print Server. Type the print server name and click Create.

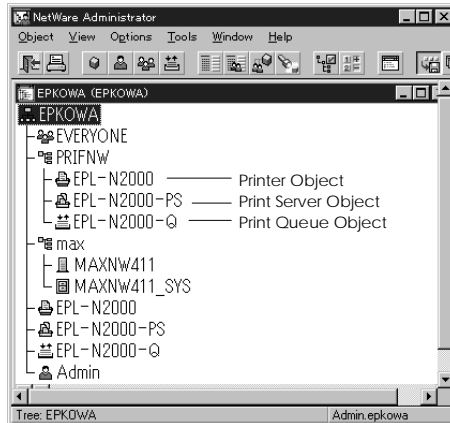


5. Create a print queue:

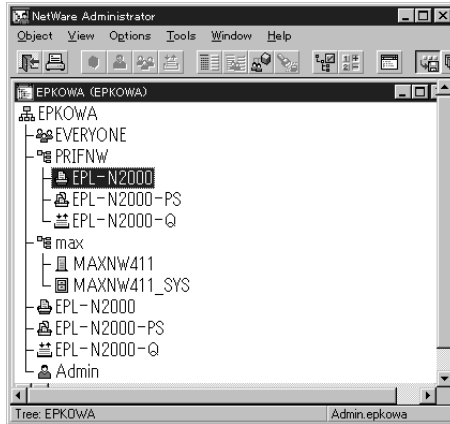
Click the directory context icon (or Bindery context), and select Object, then Create, and then Print Queue. Type the print queue name and select the print queue volume. Then click Create.



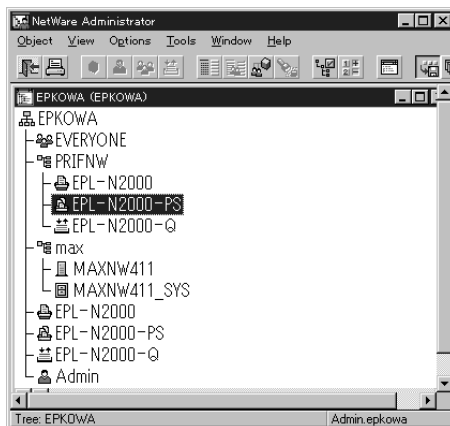
6. The objects you have just created are added to the directory context (or Bindery context).



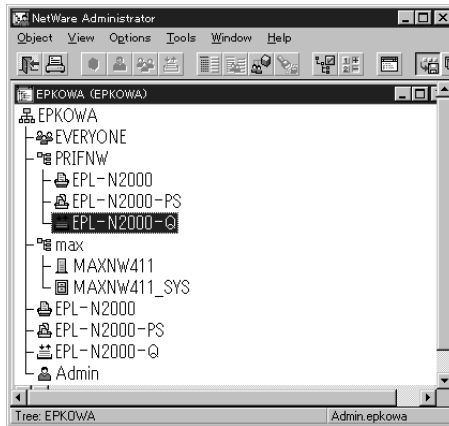
7. Double-click the Printer Object icon on the NetWare Administrator screen.



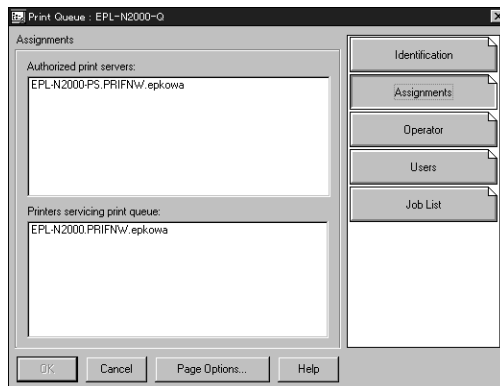
8. The Printer dialog box appears. Click Assignments and then click Add.
9. From the print queue list, select the queue you want to assign and click OK.
10. Double-click the Print Server Object icon on the NetWare Administrator screen.



11. The Print server dialog box appears. Click Assignments and then click Add.
12. From the printer object list, select the printer object you want to assign and click OK.
13. Double-click the Print Queue Object icon on the NetWare Administrator screen.



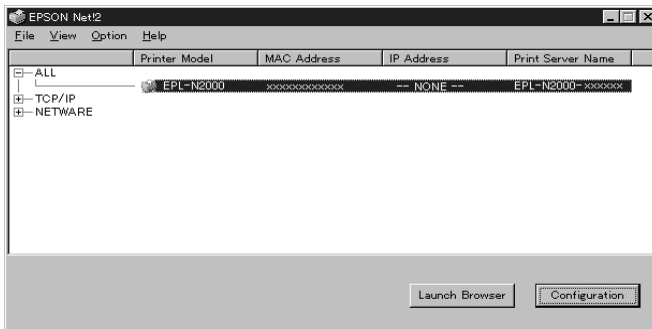
14. The Print Queue dialog box appears. Click Assignments. Check if the print server and the printer are assigned.



Configuring the Ethernet card in Print Server mode

This section explains how to set up EPSON Net!2.

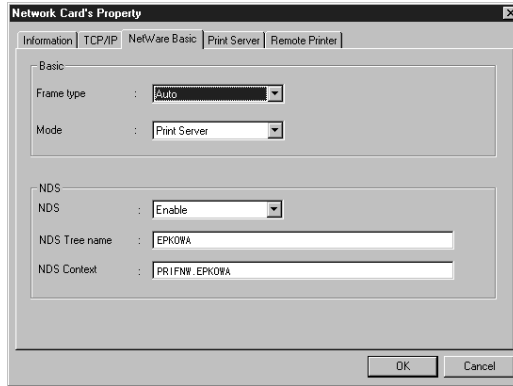
1. Turn on the printer with the Ethernet card.
2. Run EPSON Net!2 from the Start menu.
3. The EPSON Net!2 dialog box appears showing a list of the interface cards on the network. Select the printer you want to configure from the list, and click Configuration.



Note:

- ❑ *If you have connected more than one printer with the same type of Ethernet card to the network, you can distinguish the cards by pressing the status sheet button on the Ethernet card plate to print a status sheet for each printer, or by checking the sticker on the Ethernet card. Then check the MAC address.*
- ❑ *If the IP address is set to the default IP address, the printer model might not appear.*

4. Click the NetWare Basic tab and make the following settings.

**Frame type:**

You can select one from the following: Auto, Ethernet 802.2, Ethernet 802.3, Ethernet II, or Ethernet SNAP.

Mode:

Select Print Server from the following: Print Server, Remote Printer, or Standby.

NDS:

Select Enable or Disable.

NDS Tree Name:

Type the same name (up to 31 characters) as you set in Nwadmin if it is in NDS mode.

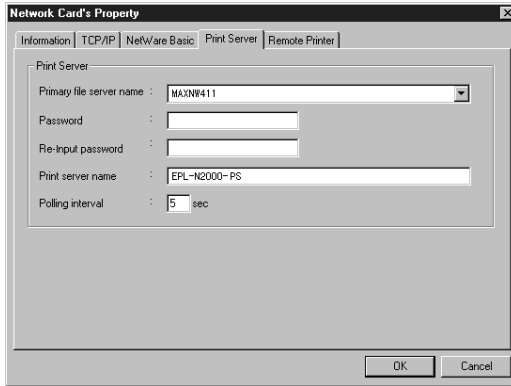
NDS Context:

NDS context is the Object rank in the Directory tree. Type the container object (up to 255 characters) from the Object to the Root. Do not type the "." at the top.

Note:

See your NetWare manual for the available characters and number of characters you can use.

5. Click the Print Server tab and make the following settings.



Primary file server name:

Select the server where you created the queue.

Password:

Type any new password up to 19 characters. The characters you entered appear as “*”.

Print server name:

Type any new name up to 47 characters. The default name is shown below.

(Printer name) - (last 6 digits of the serial number)

Polling interval:

Set the polling time from 5 to 90 seconds.

6. Click OK to save changes. If the message “Configuration is successfully done” appears on your screen, updating is complete.



Caution:

Once you make changes to the Ethernet card, you must wait until it completes the settings before turning off the printer.

7. Select the Connection Information of File Server Console's MONITOR.NLM, and check if the print server name assigned to the Ethernet card has been logged in to the Active Connections list. It takes five minutes or less to complete this.

Using the Ethernet card in Remote Printer mode

This section explains how to configure the Ethernet card in Remote Printer mode using the Nwadmin tool of NetWare 4.x.

If the client who wants to print does not correspond to NDS, make the object in the Bindery context.

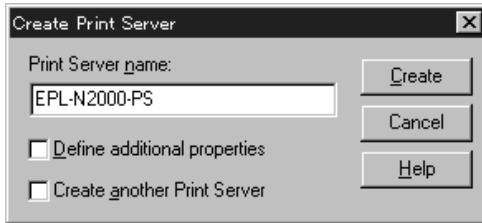
1. Log in to the NDS (or Bindery context) with Admin or supervisor privileges.
2. Run the administrator tool (Nwadmin).
3. Create a printer:

Click the directory context icon (or Bindery context), and select Object, then Create, and then Printer. Type the printer name and click Create.



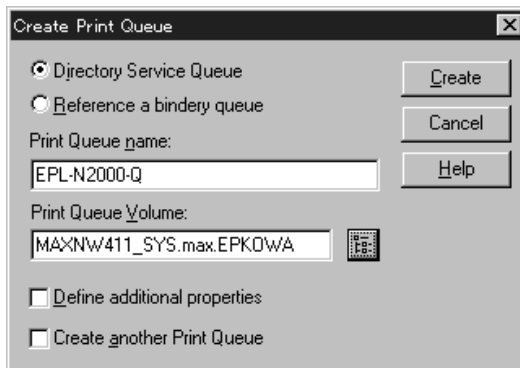
4. Create a print server:

Click the directory context icon (or Bindery context), and select Object, then Create, and then Print Server. Type the print server name and click Create.

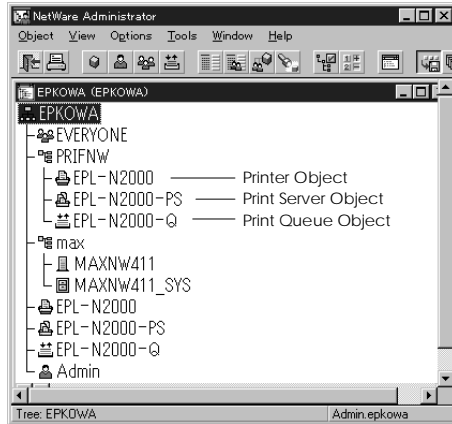


5. Create a print queue:

Click the directory context icon (or Bindery context), and select Object, then Create, and then Print Queue. Type the print queue name and select the print queue volume. Then click Create.

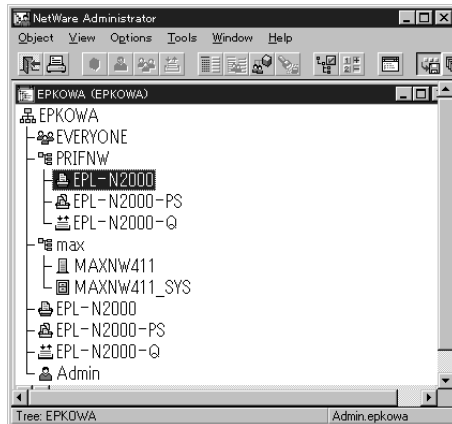


- The objects you have just created are added to the directory context (or Bindery context).

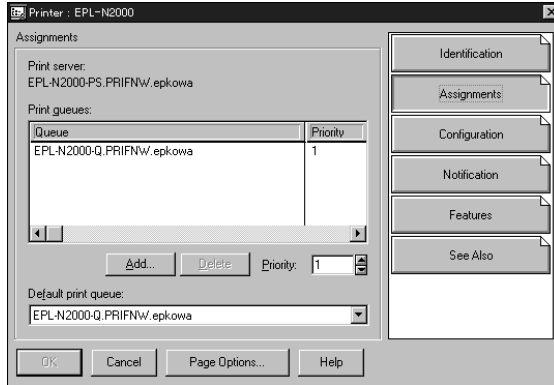


4

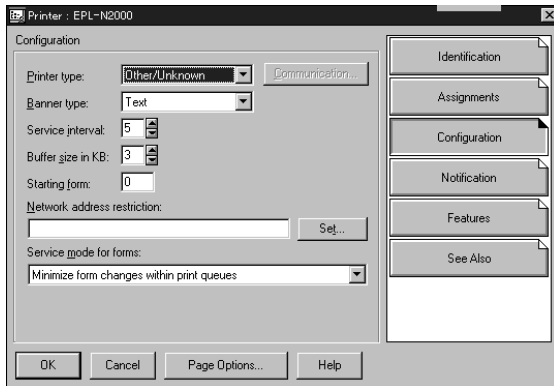
- Double-click the Printer Object icon on the NetWare Administrator screen.



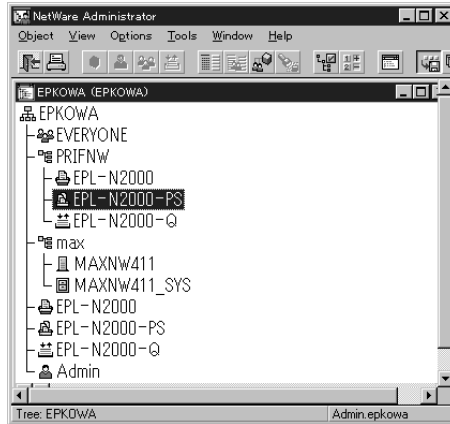
- The Printer dialog box appears. Click Assignments and then click Add.



- From the print queue list, select the queue you want to assign and click OK.
- Click Configuration, and select Other/Unknown for the Printer type box and click OK.

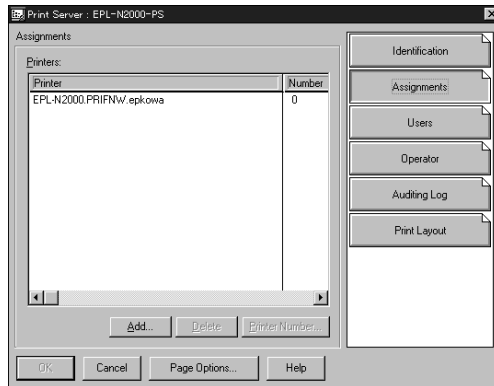


11. Double-click the Print Server Object icon on the NetWare Administrator screen.

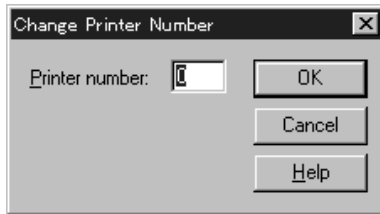


4

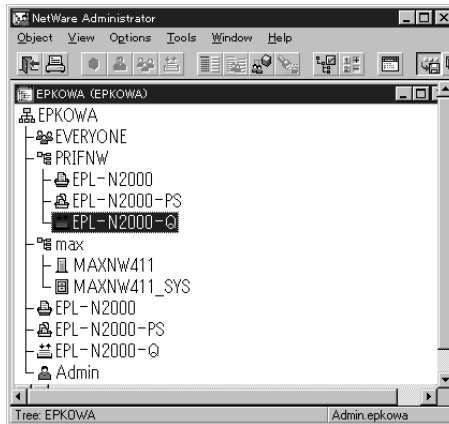
12. The Print Server dialog box appears. Click Assignments and then click Add.



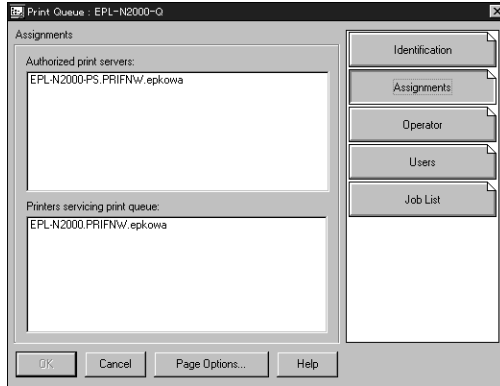
- From the printer object list, select the printer object you want to assign and click OK.
- Go back to the screen in step 12, and click the Printer Number button to set the printer number from 0 to 254.



- Double-click the Print Queue Object icon on the NetWare Administrator screen.



16. The Print Queue dialog box appears. Click Assignments. Check if the print server and a printer are assigned.



See your NetWare 4.1x manual for more detailed information.

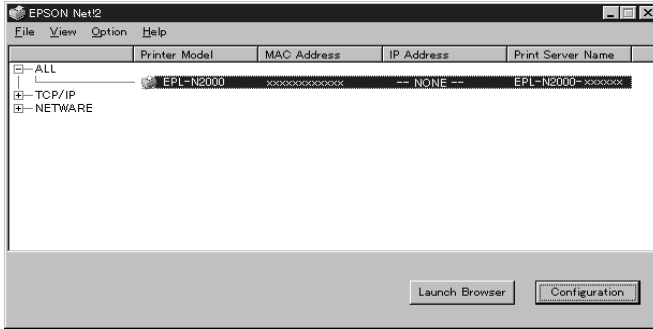
Configuring the Ethernet card in Remote Printer mode

1. From the System Console of the file server which you use to set the print queue, load the print server module by the following command. Type the print server name which you assigned in step 4 of the previous section on page 4-28.

>LOAD PSERVER print server name

2. Run EPSON Net!2 from the Start menu.

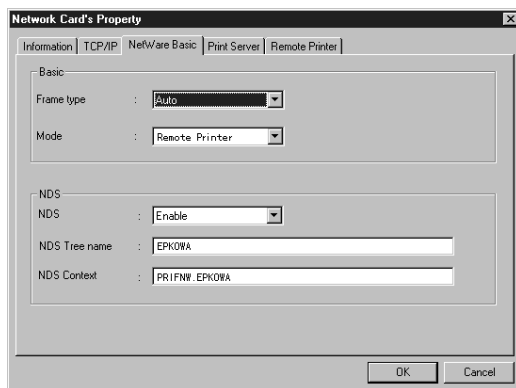
3. The EPSON Net!2 dialog box appears showing a list of the interface cards on the network. Select the printer you want to configure from the list and click Configuration.



Note:

- ❑ *If you have connected more than one printer with the same type of Ethernet card to the network, you can distinguish the cards by pressing the status sheet button on the Ethernet card plate to print a status sheet for each printer, or by checking the sticker on the Ethernet card. Then check the MAC address.*
- ❑ *If the IP address is set to the default IP address, the printer model might not appear.*

4. Click the NetWare Basic tab and make the following settings.

**Frame type:**

You can select one from the following: Auto, Ethernet 802.2, Ethernet 802.3, Ethernet II, or Ethernet SNAP.

Mode:

Select Remote Printer from the following: Print Server, Remote Printer, or Standby.

NDS:

Select Enable or Disable.

NDS Tree Name:

Type the same name (up to 31 characters) as you set in Nwadmin if it is in NDS mode.

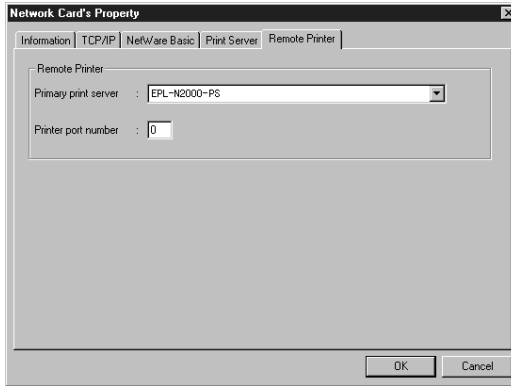
NDS Context:

NDS context is the Object rank in the Directory tree. Type the container object (up to 255 characters) from the Object to the Root. Do not type the "." at the top.

Note:

See your NetWare manual for the available characters and number of characters you can use.

5. Click the Remote Printer tab and make the following settings.



Primary print server name:

Select the print server name you have created.

Printer port number:

Type the same port number you assigned to the print server (type 0).

6. Click OK to save changes. If the message "Configuration is successfully done" appears on your screen, updating is complete.



Caution:

Once you make changes to the Ethernet card, you must wait until it completes the settings before turning off the printer.

7. Select Printer Status from the Console screen of the print server. Select a printer from the list. Then check the status.
8. Select Queues serviced. Check if the print queue name which you set in step 5 of "Using the Ethernet card in Remote Printer mode" exists in the Print Queues Serviced By Printer box.

Configuring the Ethernet Card for NetWare Using EPSON Net!2 for Intranet

If you have set the IP address for the Ethernet card in Chapter 3, you can configure the Ethernet card for NetWare using EPSON Net!2 for Intranet.



Caution:

- ❑ *You must not use EPSON Net!2 for Windows / Macintosh and EPSON Net!2 for Intranet at same time.*
- ❑ *Once you make changes to the Ethernet card, wait until the updating is complete before turning off or sending data to your printer.*

Note:

- ❑ *See the setting procedure of EPSON Net!2 for Windows of each section for the cautions and notes.*
- ❑ *There are some restrictions on the characters you can use depending on your browser. For details, see your browser or OS manual.*

1. Run EPSON Net!2. Select the printer you want to configure from the list, and click the Launch Browser button.

Or start the browser and type the IP address of the Ethernet card directly. Do not run EPSON Net!2 for Windows when the browser is running.

URL: `http://` (the IP address of the Ethernet card) /

2. EPSON Net!2 for Intranet starts running.
3. Click NetWare under Network on the Configuration menu to view the NetWare setting screen.

4. Make basic settings for NetWare.

You can select either Enable or Disable in the NetWare text box. Choose Enable to use NetWare.

Note:

If Disable is on, all NetWare related functions will stop. Because of that, you may not configure the Ethernet card for NetWare using EPSON Net!2 for Windows.

5. Select the Primary Frame Type.

6. Select the Mode.

- Select NDS Print Server or NDS Remote Printer when you use the NDS mode of NetWare 4.1x.
- Select Bindery Print Server or Bindery Remote Printer when you use the Bindery mode of NetWare 3.x or NetWare 4.1 or later.
- Select Standby when you don't use NetWare, or when there is some inconvenience by setting NetWare to Enable.

7. When you select NDS Print Server or NDS Remote Printer for the Mode, enter the NDS Tree name (up to 31 characters) and the NDS Context (up to 255 characters).

8. When you select NDS Print Server or Bindery Print Server for the Mode, make the Print Server settings.

9. Type the Primary File Server name (up to 47 characters), Print Server name (up to 47 characters), Polling Interval (from 5 to 90 seconds), and the NetWare Password (up to 19 characters).

10. When you select NDS Remote Printer or Bindery Remote Printer for Mode, make the Remote Printer settings.

11. Type the Primary Print Server name (up to 47 characters) and Printer Port Number (from 0 to 254).
12. Click the SUBMIT button to update the settings. If you set the password in the Password under the Optional menu, you need to type the password to update the settings.
13. If the message “Configuration change is complete!” appears on your screen, updating is complete. Follow the message appears on your screen to enable the changes by pressing RESET or turning your printer off and on.

Create and Set the Queue Using EPSON Net!2

You can create a print queue and set the queue information to the NetWare file server using Queue Settings of the Option menu of EPSON Net!2 for Windows.

Only Bindery queue is supported. You will have to log onto the NetWare server with supervisor privileges.

1. From any NetWare client, log in to the file server you want to set with supervisor privileges.
2. Run EPSON Net!2 from the Start menu.
3. Select the Queue Settings from the Option menu.
4. The file server list which logged in appears.
5. Click the file server in which you create a queue, and click New. The setting screen appears.
6. Type the queue name and printer name (up to 47 characters), and select the print server name you want to assign. Then click OK.
7. When you want to delete the queue, click the queue in the list, and click Delete.

Instructions for Using a Dial-Up Network

This section explains about instructions for using a dial-up network.

Note:

The primary server describes in this manual indicates a primary time server which offers time to the workstations on the network.

Using a dial-up network in each mode

Print Server mode

You must use a dedicated dial-up line.

Since polling is performed on the file server in the print server mode, no vicarious response by the router is possible. Therefore, no dial-up connection is possible in this case.

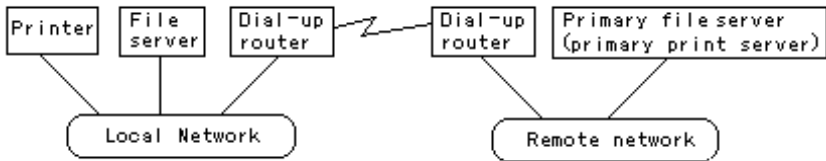
Remote Printer mode

In Remote Printer mode, use of a router with a vicarious response function allows the primary server to be installed at the dial-up destination. However, an extra account might be generated when the primary server is down. To avoid that, it is recommend to use connections via a dedicated dial-up line.

Follow the instructions for using a dial-up line.

When there is a primary server at dial-up destination

When local network has file server:



- When the power is turned on

A dial-up is generated because access is made to a local file server first and then to a primary server. There is no problem since this dial-up occurs only once at power on.

- When the Ethernet card is not correctly set

A dial-up is generated because access is made to a local file server first and then to a primary server. This dial-up is repeated at intervals of approximately 5 minutes. Make the Ethernet card settings correctly to avoid this phenomenon.

- During normal operation (standby)

A SPX Watchdog packet is sent according to the NetWare protocol convention. Use a router with a vicarious response function to avoid dial-up.

- During normal operation (printing)

A dial-up is generated while the printing data is being transferred. This is not a problem because it is a dial-up specific to the dial-up network.

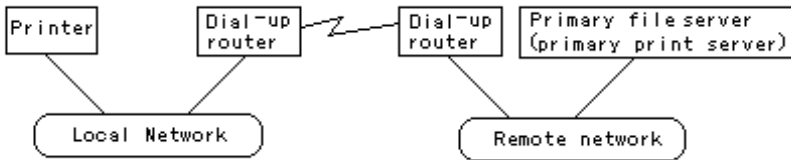
- ❑ When the primary server is down during operation

A dial-up is generated because connection to the primary server is periodically attempted. Since this is attributable to the automatic re-connection function, turn off the printer with the Ethernet card once.

- ❑ When the file server on the local network is down

When there is no file server on the local network, NetWare cannot be used on the local network. In this case, also the NetWare protocol for the Ethernet card is not available. No dial-up is generated under this condition. When the file server on the local network is restored, the Ethernet card is also automatically restored.

When local network has no file server:

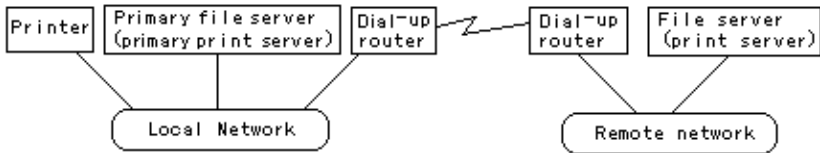


Depending on the router setting, the NetWare protocol can be used without a file server on the local network. This case also follows the first five described above.

When the local network has a primary server

Even if a primary server is installed on the local network, an unnecessary dial-up may be generated depending on the configuration.

The following problems are common to the both Print Server mode and the Remote Printer mode.



- When the power is turned on

Since access is made only to the primary server, no dial-up is generated.

- When the Ethernet card is not correctly set

Since access is made only to the primary server, no dial-up is generated. However, if the file server/print server of the remote network is erroneously set as the primary server, unnecessary dial-up might be generated. Correct the setting error to avoid this problem.

- During normal operation (standby)

Since access is made only to the primary server, no dial-up is generated.

- ❑ During normal operation (printing)

Since access is made only to the primary server, no dial-up is generated.

- ❑ When the primary server is down during operation

Connection to the primary server is periodically attempted, but no dial-up is generated. However, if the router is set to pass SAP packets (Find Nearest Server), an unnecessary dial-up might be generated. To avoid this, turn off the printer once, or do not allow the router to pass SAP packets (Find Nearest Server).

Using the Ethernet Card with Macintosh

This chapter describes how to configure the Ethernet card for TCP/IP or AppleTalk using EPSON Net!2 for Macintosh.

Overview

Applicable systems

- ❑ Macintosh OS
 - System 7.1, 7.5, 7.5.1, 7.5.2, 7.5.3, 7.5.5
 - Mac OS 7.6, 7.6.1, 8.0
- ❑ Apple network driver
 - EtherTalk Phase 1 and 2
- ❑ EPSON printer driver
 - AT-StylusCOLOR
 - EPSON Stylus (AT)
 - AT-Epson ESC/P2
 - AT-Epson DFX
 - AT-Epson FX
- ❑ Apple printer driver
 - LaserWriter, LaserWriter 8
- ❑ EPSONScript driver
 - EPSONScript Driver, EPSONScript Utility

Overall steps

The following are the overall steps for using the Ethernet card with Macintosh. Go to the indicated chapters for more information.

1. Install the correct printer driver in a Macintosh system.
2. Install EPSON Net!2 for Macintosh. See Chapter 2.
3. Make the TCP/IP setting using EPSON Net!2 (if you do not use EPSON Net!2 for Intranet, this setting is not necessary). See Chapter 3.
4. Set AppleTalk using EPSON Net!2 for Macintosh or EPSON Net!2 for Intranet. See this chapter.

Notes when using a Macintosh with the Ethernet card

EPSON Namer

Do not use EPSON Namer with the Ethernet card.

Configuring the Ethernet Card Using EPSON Net!2 for Macintosh

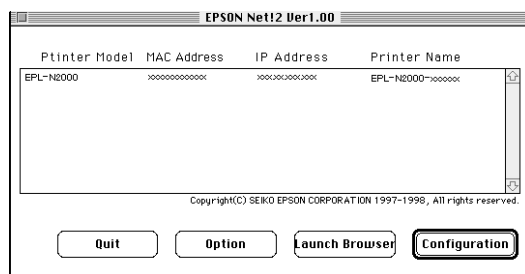
Use EPSON Net!2 for Macintosh to configure the Ethernet card as described below.



Caution:

Once you make changes to the Ethernet card using EPSON Net!2, wait until it completes the settings before turning off or sending data to the printer.

1. Connect the Ethernet card to the network and turn on the printer.
2. Double-click the EPSON Net!2 for Macintosh icon.
3. Highlight the printer you want to configure from the list and click Configuration.



Note:

- ❑ *If you have connected more than one printer with the same type of Ethernet card to the network, you can distinguish the cards by pressing the status sheet button on the Ethernet card to print a status sheet for each printer, or by checking the sticker on the Ethernet card. Then check the MAC address.*
- ❑ *If the IP address is set to the default IP address, the printer model might not appear.*

4. The IP Address Configuration and AppleTalk Configuration dialog box appears.

EPSON Net!2

IP Address Configuration

IP Address Setting

Enable DHCP

Enable BOOTP

Enable RARP

Manual

IP Address : [11] [22] [33] [44]

Subnet Mask : [255] [255] [255] [255]

Default Gateway : [255] [255] [255] [255]

AppleTalk Configuration

Printer Setting

Printer Name : [EPL-N2000-xxxxxx]

Entity Type : [EPSONPCL5]

AppleTalk Setting

Zone Name : [+]

Network Number Set : [AUTO]

NetWork Number for Manual Mode(0-65535) : []

[Return to Default] [Cancel] [Send]

Note:

See “Setting the IP address for EPSON Net!2 for Windows/Macintosh” in Chapter 3 for more information about setting the IP address.

5. Set the following options in the AppleTalk Configuration box.

Printer Setting:

Printer Name:

Type the printer name (up to 31 characters). The default name is shown below. (Printer name)-(last 6 digits of the serial number)

Entity Type:

If you are using a Level 2 printer, you do not have to set these options. It just shows the printer’s Entity type on an AppleTalk network.

If you are using a Level 1 printer, set the Entity type to match the printer driver for the printer with the Ethernet card.

AppleTalk Setting:

Zone Name:

Select the network zone in which you want the printer to appear. If the zone has not been set, “*” appears.

Network Number Set:

Select the network number setting. Usually you should select Auto.

Network Number for Manual Mode:

The default number is 65535. If you have selected Auto for the Network Number Set, you cannot type the network number manually.

Note:

If you cannot see the printer in the Chooser, check whether any AppleTalk routers have been set incorrectly. If you cannot change the router settings, select Manual for the Network Number Set and type a network number in the Network Number for Manual Mode box as a temporary solution. In this case, you must type the correct zone and the network number of the zone. If you do not make this setting correctly, you cannot configure the Ethernet card for use with the Macintosh.

Try one of the following:

- Start the browser from EPSON Net!2 for Windows and configure the Ethernet card again.*
 - Configure the Ethernet card using EPSON Net!2 for Intranet (TCP/IP must be set correctly).*
 - Re-initialize the Ethernet card. See page 1-7.*
6. Click the Send button to save the new settings to the Ethernet card. If the message “Configuration is successfully done” appears, updating is complete.

Configuring the Ethernet Card for AppleTalk Using EPSON Net!2 for Intranet

You can use EPSON Net!2 for Intranet after setting the IP address of the Ethernet card, as describes in Chapter 3.



Caution:

- ❑ *You cannot use EPSON Net!2 for Macintosh and EPSON Net!2 for Intranet at the same time.*
- ❑ *Once you make changes to the Ethernet card using EPSON Net!2 for Intranet, wait until it completes the settings before turning off or sending data to the printer.*

Note:

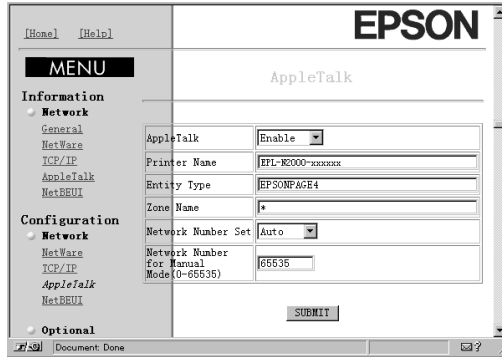
- ❑ *If you have not assigned the IP address or if you use the default setting (included when you select DHCP to acquire an IP address) with EPSON Net!2 for Macintosh, you cannot set the IP address for the Ethernet card using EPSON Net!2 for Intranet.*
 - ❑ *See the previous section “Configuring the Ethernet Card Using EPSON Net!2 for Macintosh” for the cautions and notes for each step.*
 - ❑ *There are some restrictions on the characters you can use depend on your browser. For details, see your browser or OS manual.*
1. Run EPSON Net!2 for Macintosh. Click the printer you want to configure from the list, and click the Launch Browser button.

Or, run the browser and type the IP address for the Ethernet card. Do not run EPSON Net!2 for Macintosh while the browser is running.

URL: `http:// (IP address of the Ethernet card) /`

2. EPSON Net!2 for Intranet starts running.

3. Click AppleTalk under Network on the Configuration menu to view the AppleTalk setting screen.



4. You can select either Enable or Disable in the AppleTalk text box. Choose Enable to use AppleTalk.

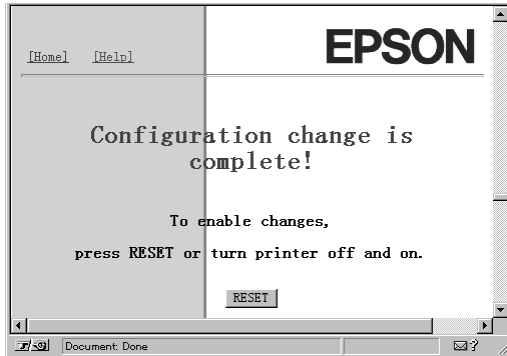
Note:

If Disable is on, all AppleTalk related functions will stop.

5. Type the Printer Name (up to 31 characters), Zone Name (up to 31 characters), and Entity Type (up to 31 characters). If you are using a Level 2 printer, you don't need to type at the Entity Type box.
6. Select either Auto or Manual for Network Number Set. Usually, set it to Auto. Type the network number at the Network Number for Manual Mode box when you select Manual for Network Number Set.
7. Click the SUBMIT button to update the settings.

If you have set the password in the Password under the Optional menu, you need to type the password to update the settings. See Chapter 10 for more information about passwords.

8. If the message “Configuration change is complete!” appears on your screen, the update is complete. Follow the instructions appearing on your screen to enable the changes by pressing RESET or turning your printer off and on.



Using the Ethernet Card with Windows 95

This chapter explains how to install the protocols when using the Ethernet card with Windows 95 and how to configure the Ethernet card for NetBEUI using EPSON Net!2 for Intranet.

Overview

Applicable systems

- ❑ Printing via EPSON Status Monitor 2 (TCP/IP)
- ❑ Microsoft Windows Network (NetBEUI)
It is necessary to install the NetBEUI protocol and the Client for Microsoft Networks.
Printing to the Ethernet card is equivalent to printing by printer sharing.

Overall steps

The following are the overall steps for using the Ethernet card with Windows 95. Go to the indicated chapters for more information.

1. Install TCP/IP components, if necessary. See Chapter 3.
2. Install NetBEUI components, if necessary. See this chapter.

Note:

If you use the Ethernet card with TCP/IP, you need to install TCP/IP. If you use the Ethernet card with NetBEUI, you need to install TCP/IP and NetBEUI. Because setting NetBEUI requires EPSON Net!2 for Intranet, you need to install TCP/IP.

3. Install EPSON Net!2 for Windows. See Chapter 2.
4. Assign an IP address to the Ethernet card using the EPSON Net!2 or the arp command. See Chapter 3.
5. Using this IP address, use EPSON Net!2 for Intranet to configure the Ethernet card for NetBEUI. See this chapter.
6. Set up the printer. See this chapter.

Printing with TCP/IP

If you haven't installed TCP/IP, you need to install TCP/IP, as described on page 3-3.

Printing method

Because Windows 95 does not support the LPR printing system, standard TCP/IP printing cannot be done with Windows 95. However, TCP/IP printing is possible using LPR via EPSON Status Monitor 2.

See Chapter 11 "EPSON Status Monitor 2 (Windows only)" for more information.

Printing with NetBEUI

Installing NetBEUI protocol

After installing TCP/IP, you need to install NetBEUI. If NetBEUI is already installed, skip the steps below.

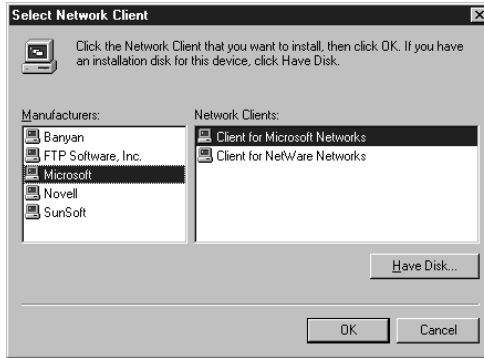
Follow the steps below to install the Client for Microsoft Networks and the NetBEUI Protocol.

1. Install the Client for Microsoft Networks.

Double-click **Network** in the Control Panel, and check if **Client for Microsoft Networks** is in the list of installed network components on the configuration menu.

2. If **Client for Microsoft Networks** is not in the list, click the **Add** button. Select **Client** and click **Add**.

3. **Select Microsoft from the Manufacturers list and Client for Microsoft Networks from the Network Clients list and click OK.**

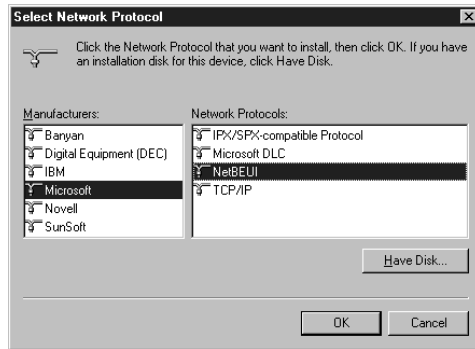


4. **Install the NetBEUI protocol.**

Double-click Network in the Control Panel, and check if NetBEUI is in the list of installed network components on the configuration menu.

5. **If NetBEUI is not in the list, click the Add button. Select Protocol and click Add.**

6. In the Select Network Protocol dialog box, select Microsoft from the Manufacturers list, and then select NetBEUI from the Network Protocols list and click OK.



Configuring the Ethernet card for NetBEUI using EPSON Net!2 for Intranet

6

You can configure the Ethernet card for NetBEUI using EPSON Net!2 for Intranet.



Caution:

- You cannot use EPSON Net!2 for Windows and EPSON Net!2 for Intranet at the same time.
- Once you make changes to the Ethernet card using EPSON Net!2, wait until it completes the settings before turning off or sending data to the printer.

Note:

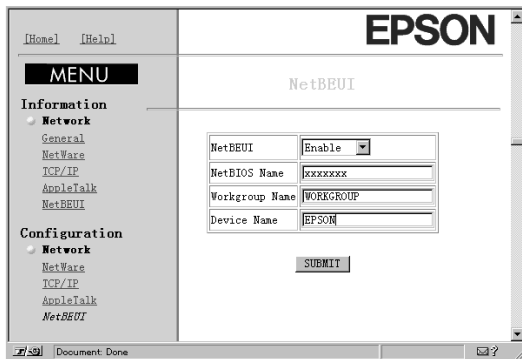
- If you have not assigned the IP address on the TCP/IP menu of EPSON Net!2 for Windows, or if you use the default setting (included when you select DHCP to acquire an IP address), you cannot configure the Ethernet card for NetBEUI using EPSON Net!2 for Intranet.
- There are some restrictions on the characters you can use depend on your browser. For details, see your browser or OS manual.

Before you follow these steps, make sure to set the IP address for the Ethernet card in the TCP/IP dialog box of EPSON Net!2 for Windows.

1. Run EPSON Net!2 from the Start menu.
2. Click the printer you want to configure from the list, and click the Launch Browser button, or start your browser and type the IP address of the Ethernet card directly as described below. Do not run EPSON Net!2 for Windows while using the browser.

URL: http:// (IP address of the Ethernet card) /

3. EPSON Net!2 for Intranet starts running.
4. Click NetBEUI under Network on the Configuration menu. The NetBEUI setting screen appears.



5. Select Enable in order to use NetBEUI.

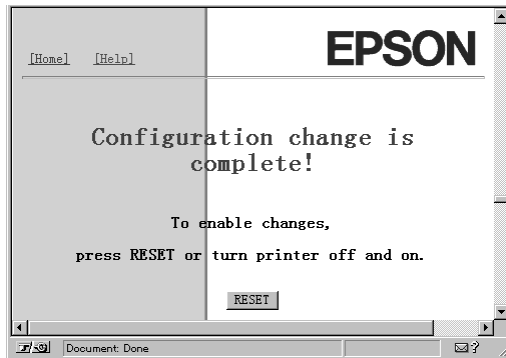
Note:

If Disable is on, all NetBEUI related functions will stop.

6. Type the NetBIOS name (up to 15 characters), the workgroup name (up to 15 characters), and the device name (up to 8 characters).

Note:

- The NetBIOS name is the computer name on the network. Make sure to give a unique name for the network.*
 - For the workgroup name, type the domain name or the workgroup name used for the Windows network environment.*
7. Click SUBMIT to update the settings. If you have set a password in the Password under the Optional menu, you need to type the password to update the settings. See Chapter 10 for more information about passwords.
 8. If the message “Configuration change is complete!” appears on your screen, the update is complete. Follow the instructions appearing on your screen to enable the changes by pressing RESET or turning your printer off and on.



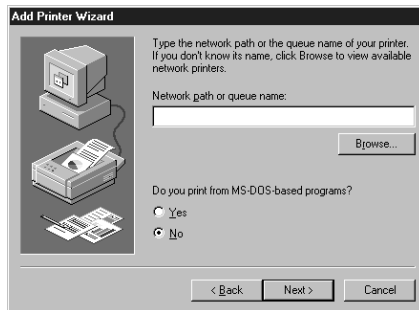
Setting up your printer

This section explains how to set up the printer with the Ethernet card.

1. Double-click Add Printer from the Printer window.
2. Click the Network Printer radio button and click Next.
3. Click the Browse button, and add the network path from the list.

If it is not possible to browse, type the following at the Network path or queue name box.

\\(NetBIOS name of the Ethernet card)\
(Device name of the Ethernet card)



4. Follow the on-screen instructions to set up the printer.

Chapter 7

Using the Ethernet Card with Windows NT

This chapter explains how to install the protocols when using an Ethernet card with Windows NT 3.51/4.0 and how to configure the Ethernet card for NetBEUI using EPSON Net!2 for Intranet.

Overview

Applicable systems

- ❑ Windows NT 3.51 and Windows NT 4.0
- ❑ LPR Port (TCP/IP)
- ❑ Microsoft Windows Network (NetBEUI)
It is necessary to install the NetBEUI protocol.
Printing to the Ethernet card is equivalent to printing by printer sharing.

Overall steps

The following are the overall steps for using the Ethernet card with Windows NT. Go to the indicated chapters for more information.

1. Install TCP/IP components, if necessary. See Chapter 3.
2. Install NetBEUI components, if necessary. See this chapter.

Note:

If you use the Ethernet card with TCP/IP, you need to install TCP/IP. If you use the Ethernet card with NetBEUI, you need to install TCP/IP and NetBEUI. Because setting NetBEUI requires EPSON Net!2 for Intranet, you need to install TCP/IP.

3. Install EPSON Net!2 for Windows. See Chapter 2.
4. Assign an IP address to the Ethernet card using the EPSON Net!2 or the arp command. See Chapter 3.
5. Using this IP address, use EPSON Net!2 for Intranet to configure the NetBEUI settings on the Ethernet card. See this chapter.
6. Set up the printer. See this chapter.

Printing with TCP/IP

If you haven't installed TCP/IP, you need to install TCP/IP, as described on page 3-3.

Printing via the LPR port for Windows NT 3.51

In order to use the printer with the Ethernet card with Windows NT, connect the network printer to your computer using the LPR port.

If you are using the printer on a TCP/IP network with Windows NT (LPR), follow the steps below.

Setting up your printer

Note:

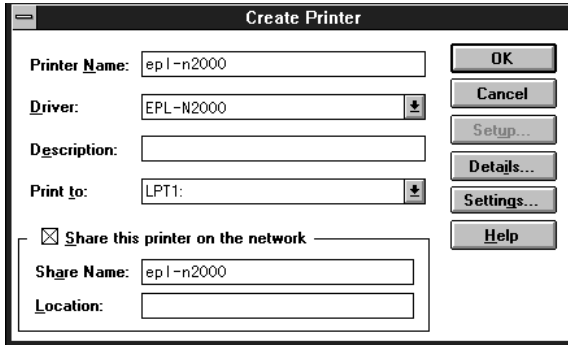
You must install the correct printer drivers before starting these operations.

1. Select Create Printer from the Printer menu of the Print Manager.
2. Type the printer name, and select the printer driver.

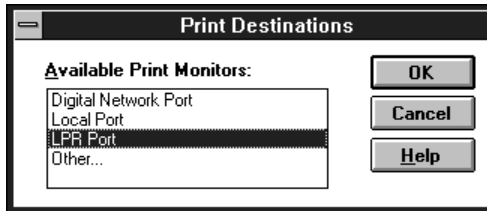
3. If you use the printer on a network, check Share this printer on the network on the network check box, and type the share name and the location.

Share Name: Type the shared printer name.

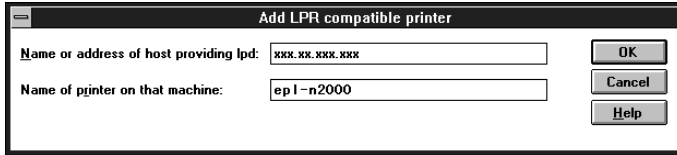
Location: Since it is treated as a comment, you don't have to type the location.



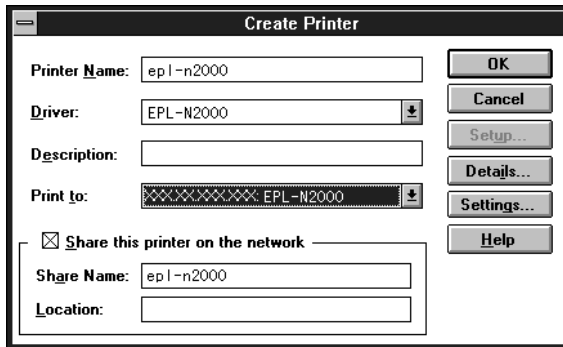
4. Select Other from the Print to pull-down menu.
5. The Print Destinations dialog box appears. Select LPR Port from the Available Print Monitors list and click OK.



- The Add LPR compatible printer dialog box appears. Type the IP address of the Ethernet card and the name of the printer, and click OK.



- In the Create Printer dialog box, if the Print to box shows "IP address: printer name", the setting is complete.

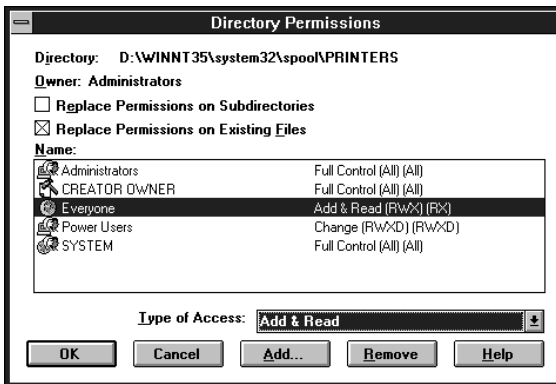


- Click OK to start installing the printer driver. Follow the on-screen instructions.

Change the type of access of the spool directory

You need to change the access rights of the spool directory when you create a shared printer on the Windows NT 3.51 Server (when you select NTFS file system).

1. Start the File Manager and point the cursor at \WINNT35\SYSTEM32\SPOOL\PRINTERS.
2. Select Permissions from the Security menu.
3. Change the type of access of Everyone to ADD & READ (RWX)(RX), and click OK.

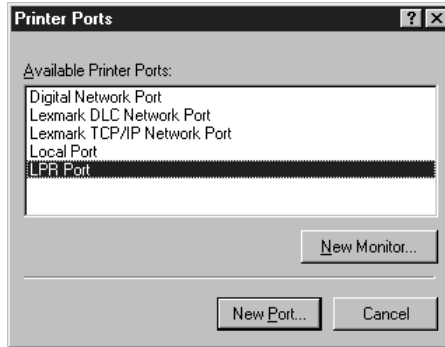


Printing via the LPR port for Windows NT 4.0

Setting up your printer

1. Double-click the My Computer icon on the desktop, then double-click the Printers icon.
2. Double-click the Add Printers icon, and click the My Computer radio button, then click Next.
3. Click Add Port in the Add Printer Wizard dialog box.

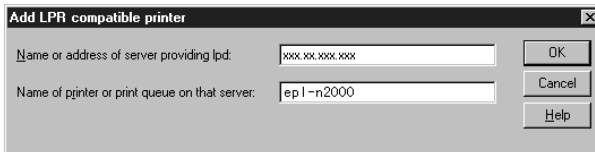
4. Select LPR Port from the Available Printer Port list, and click the New Port button.



Note:

You cannot use the Lexmark TCP/IP Network Port with this Ethernet card.

5. The Add LPR compatible printer dialog box appears. Type the IP address of the Ethernet card in the first text box and an appropriate printer name in the second text box, and click OK to return to the Printer Ports dialog box.



6. Follow the on-screen instructions to install the printer driver.

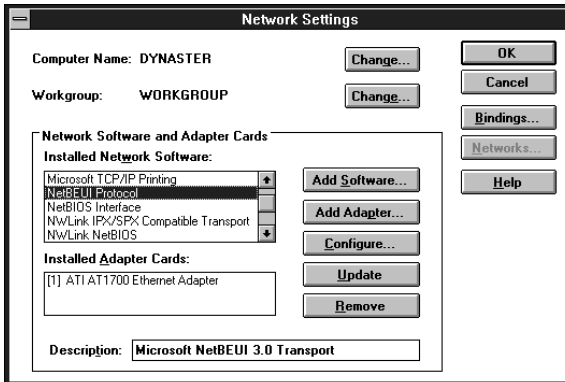
Printing with NetBEUI

After installing TCP/IP as described in Chapter 3, you need to install the NetBEUI protocol.

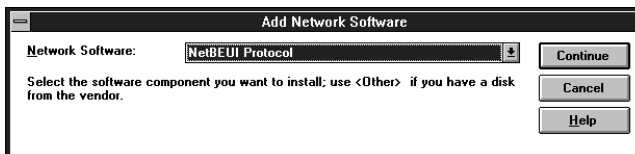
If NetBEUI is already installed, skip the steps below.

Installing NetBEUI protocol in Windows NT 3.51

1. Double-click the Network icon in the Control Panel to display the Network Settings dialog box. Check if NetBEUI Protocol is in the Installed Network Software list.

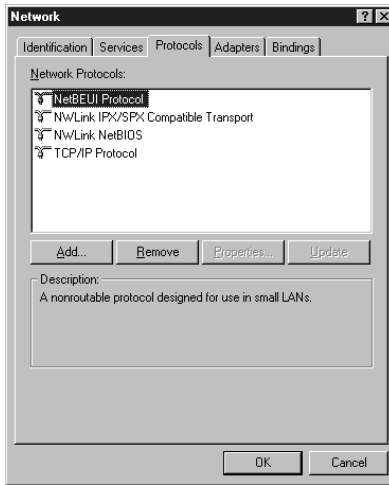


2. If NetBEUI Protocol is not in the list, click the Add Software button. Select NetBEUI Protocol from the Network Software pull-down menu, and click Continue to add NetBEUI.



Installing NetBEUI protocol in Windows NT 4.0

1. Double-click the Network icon in the Control Panel. Click the Protocols tab, and check if the NetBEUI Protocol is in the Network Protocols list.



2. If NetBEUI Protocol is not in the list, click Add. Select NetBEUI Protocol and click OK.

Configuring the Ethernet card for NetBEUI using EPSON Net!2 for Intranet

You can configure the Ethernet card for NetBEUI using EPSON Net!2 for Intranet.



Caution:

- ❑ *You cannot use EPSON Net!2 for Windows and EPSON Net!2 for Intranet at the same time.*
- ❑ *Once you make changes to the Ethernet card using EPSON Net!2, wait until it completes the settings before turning off or sending data to the printer.*

Note:

- ❑ *If you have not assigned the IP address on the TCP/IP menu of EPSON Net!2 for Windows, or if you use the default setting (included when you select DHCP to acquire an IP address), you cannot configure the Ethernet card for NetBEUI using EPSON Net!2 for Intranet.*
- ❑ *There are some restrictions on the characters you can use depending on your browser. For details, see your browser or OS manual.*

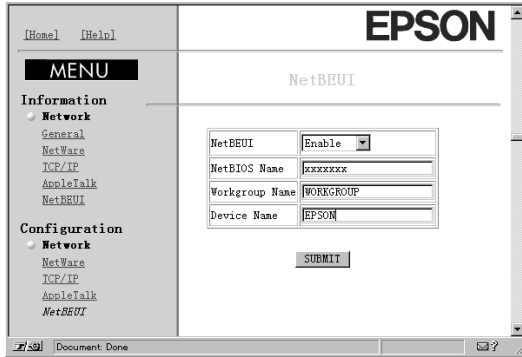
Before you follow these steps, make sure to set the IP address for the Ethernet card in the TCP/IP dialog box of the EPSON Net!2 for Windows.

1. Run EPSON Net!2 from the start menu.
2. Click the printer you want to configure from the list, and click the Launch Browser button, or start your browser and type the IP address of the Ethernet card directly as described below. Do not run the EPSON Net!2 for Windows while using the browser.

URL: `http:// (IP address of the Ethernet card) /`

3. EPSON Net!2 for Intranet starts running.

- Click NetBEUI under Network on the Configuration menu. The NetBEUI setting screen appears.



- Select Enable to use NetBEUI.

Note:

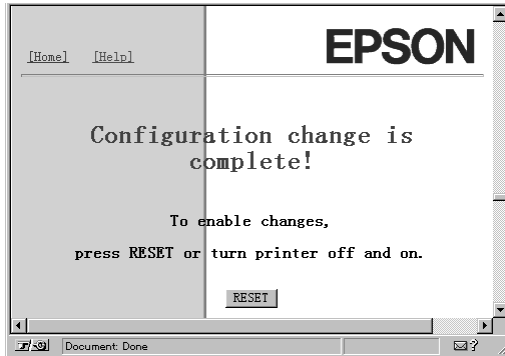
If Disable is on, all NetBEUI related functions will stop.

- Type the NetBIOS name (up to 15 characters), the workgroup name (up to 15 characters), and the device name (up to 8 characters).

Note:

- The NetBIOS name is the computer name on the network. Make sure to give a unique name for the network.*
 - For the workgroup name, type the domain name or the workgroup name used for the Windows network environment.*
- Click SUBMIT to update the settings. If you have set a password in the Password under the Optional menu, you need to type the password to update the settings. See Chapter 10 for more information about passwords.

8. If the message “Configuration change is complete!” appears on your screen, the update is complete. Follow the instructions appearing on your screen to enable the changes by pressing RESET or turning your printer off and on.



Setting up your printer

This section explains how to set up the printer with the Ethernet card.

For Windows NT 3.51

1. Double-click Print Manager from the Main dialog box, and select Connect to Printer from the Printer menu.
2. Select the printer you want to configure from the Shared Printers list and click OK.

If you cannot select the printer, type directly in the Printer box as follows:

\\ (NetBIOS name of the Ethernet card) \
(Device name of the Ethernet card)

For Windows NT4.0

1. Double-click Add Printer in the Printers dialog box.
2. Click the Network printer server radio button in the Add Printer Wizard dialog box.
3. The Connect to Printer dialog box appears. Select the printer you want to configure from the Shared Printers list.

If you cannot select the printer, type directly in the Printer box as follows:

\\ (NetBIOS name of the Ethernet card) \
(Device name of the Ethernet card)

4. Follow the on-screen instructions to set up the printer.

Using the NET USE command

When you are using Windows NT server and using NetBEUI to connect with the Ethernet card, we recommend that you use the NET USE command, as outlined below:

1. Double-click Network in the Control Panel and check that the following services are installed.

For Windows NT 4.0:

Check that Server or Workstation are listed in the Services menu.

For Windows NT 3.51:

Check that Server or Workstation are listed in the Installed Network Software list.

2. Open the command prompt of Windows NT and type in the following command.

NET USE (printer port): \\(NetBIOS name of the Ethernet card)\(Device name of the Ethernet card)

Using the Ethernet Card with OS/2

This chapter explains how to configure and use the Ethernet card with an IBM OS/2 System, which include OS/2 Warp3 and 4 (OS/2 Warp Connect and OS/2 Warp Server).

Overview

Applicable systems

- OS/2 Warp3, OS/2 Warp4
- lprportd (TCP/IP) of Warp
- Shared printer
It is necessary to install the IBM OS/2 NetBIOS protocol.

Overall steps

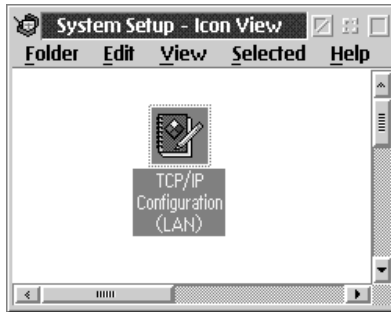
The following are the overall steps for using the Ethernet card with OS/2. Go to the indicated chapters for more information.

1. Install TCP/IP protocol or NetBEUI protocol if necessary.
2. Set the IP address using the arp command. See Chapter 3.
3. Set up the printer.

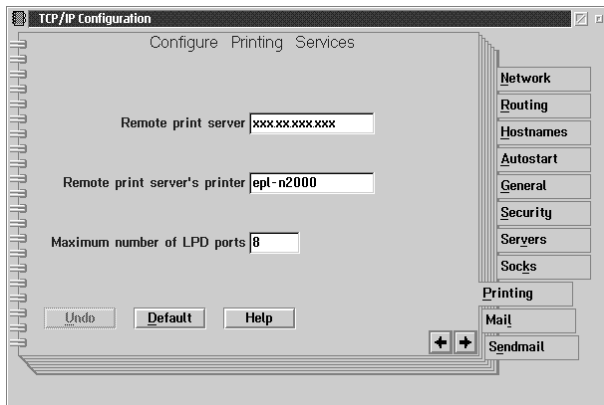
Printing with TCP/IP

This section explains TCP/IP printing using the LPR port supported by standard OS/2.

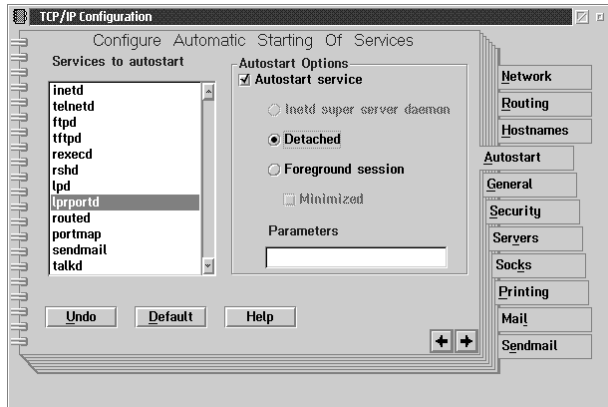
1. Double-click the OS/2 system folder, then the System Setup folder, and then double-click the TCP/IP Configuration icon.



2. Click the Printing tab. Type the IP address of the Ethernet card at the Remote print server box and the name of the remote print server's printer at the second text box. Type a value of 1 or greater at the Maximum number of LPD ports box.

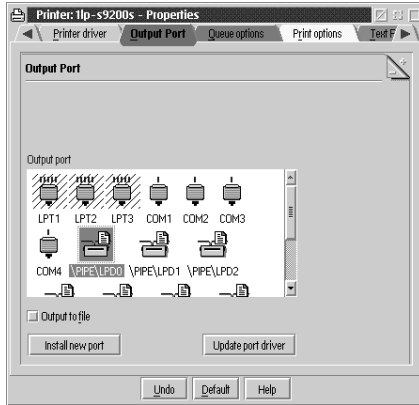


3. Click the Autostart tab. Select `lprportd` from the Services to autostart list. Check the Autostart service check box, and select the Detached radio button.

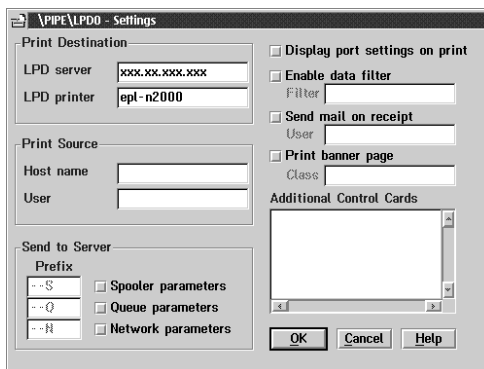


4. Save the settings you made on the TCP/IP Configuration dialog box, and restart your computer.
5. Double-click Template from the OS/2 System folder. Drag Printer to your desktop to create a printer.
6. Double-click the Printer icon to link `lprportd` to the printer, (see your OS/2 manual for more information about setting up the printer).

7. Select Properties from the control menu, then click the Output Port tab.



8. From the Output Port list box, select one from \PIPE\LPD0 to \PIPE\LPDn (where n is the maximum number of LPD ports). The \PIPE\LPD -Settings dialog box will appear.
9. Type the IP address of the Ethernet card at the LPD server box. Type the printer name set in step 2 at the LPD printer box.



10. Close the Printer icon to exit printer configuration.

Printing with NetBEUI

Setting up the printer connected with the Ethernet card.

1. Create a printer.
2. Connect to the printer from the command line.

Example: Connect the printer on LPT1.

```
net use LPT1: \\ (NetBIOS name of the Ethernet card)
  \ (Device name of the Ethernet card)
```


Using the Ethernet Card with UNIX

This chapter explains how to set up the printer for different UNIX systems using the `lpr` command.

The Ethernet card supports many standard UNIX commands and can be configured from a host computer without using a special setup utility.

The Ethernet card is able to function as a remote printer on systems using TCP/IP Ethernet transfer with `lpr` remote printing protocol, or standard `ftp` (file transfer protocol).

Note:

Because this Ethernet card does not convert data into the printer control language, a printer driver and filter are necessary for each system.

Setting Up Different UNIX Systems Using the `lpr` Command

The following UNIX systems can print using the standard `lpr` command.

- SunSoft Solaris 2.4 or later
- SunOS 4.1.4 or later
- IBM AIX 3.2.5 or later and 4.1.3 or later
- HP-UX 9.05 or later
- SCO UNIX 4.2 or later

Setting up for SunSoft Solaris 2.4 or later

In the following steps, substitute the name that your printer with the Ethernet card will be known by for HOSTNAME, and the name by which you want your printer to be known for Rprinter.

1. Add the IP address and printer host name to the `\etc\hosts` file.

For example:

```
22.33.44.55 HOSTNAME
```

2. Define the host name as a print server.

For example:

```
lpsystem -t bsd HOSTNAME
```

3. Create the printer.

For example:

```
lpadmin -p Rprinter -s HOSTNAME\aux-T unknown-1  
any
```

4. Enable the printer for use.

For example:

```
accept Rprinter  
enable Rprinter
```

Files are printed using the `lp` command.

For example:

```
lp -d Rprinter Print-File-Name
```

Setting up for SunOS 4.1.4 or later

In the following steps, substitute the name that your printer with the Ethernet card will be known by for `HOSTNAME`, and the name by which you want your printer to be known for `Rprinter`.

1. Add the IP address and printer host name to the `\etc\hosts` file.

For example:
22.33.44.55 HOSTNAME

2. Create a spool directory.

For example:
`mkdir\var\spool\lpd\PRIFx`

3. Add the printer entry to the `\etc\printcap` file.

For example:
`Rprinter |`
`LP-1700:lp=:rm=HOSTNAME:rp=aux:sd=/var/spool/`
`lpd/PRIFx`

Files are printed using the `lpr` command.

For example:
`lpt -s -PRPrinter Print-File-Name`



Caution:

Files that exceed 1MB may not be printed unless the `-s` option is used.

Setting up for IBM AIX 3.2.5 or later and 4.1.3 or later

In the following steps, substitute the name that your printer with the Ethernet card will be known by for `HOSTNAME`, and the name by which you want your printer to be known for `Rprinter`.

1. Add the IP address and printer host name to the `/etc/hosts` file.

For example:

```
22.33.44.55 HOSTNAME
```

2. Run `smit`.

For example:

```
smit printer
```

3. Set the printer name (for example: `Rprinter`) in:

“Manage Remote Printer”

“Client Services”

“Remote Printer Queues”

“NAME of queue to add”.

Set the host name (for example: `HOSTNAME`) in:

“DESTINATION HOST for remote jobs”.

Set the port name (for example: `aux`) in:

“Name of QUEUE on remote printer”.

Use the `lpr` command to print.

For example:

```
lpr -PRPrinter Print-File-Name
```

Setting up for HP-UX 9.05 or later

In the following steps, substitute the name that your printer with the Ethernet card will be known by for `HOSTNAME`, and the name by which you want your printer to be known for `Rprinter`.

1. Add the IP address and host name to the `/etc/hosts` file.

For example:
22.33.44.55 HOSTNAME

2. Terminate the printer service.

For example:
`lpshut`

3. Create the printer.

For example:
`lpadmin -pRprinter -v/dev/null -mrmmodel
-ormHOSTNAME -orpaux`

4. Restart the print service.

For example:
`lpshed`

5. Enable the printer for use.

For example:
`accept Rprinter
enable Rprinter`

Use the `lp` command to print.

For example:
`lp -DRprinter Print-File-Name`

Setting up for SCO UNIX 4.2 or later (Open Server)

In the following steps, substitute the name that your printer with the Ethernet card will be known by for `HOSTNAME`, and the name by which you want your printer to be known for `Rprinter`.

1. Add the IP address and host name to the `/etc/hosts` file.

For example:

```
22.33.44.55 HOSTNAME
```

2. Execute `rlpconf` to register the printer.

For example:

```
rlpconf
```

3. Enter the name of the printer.

For example:

```
Please enter the printer name (q to quit):RPrinter
```

4. Specify the remote printer as the printer type.

For example:

```
Is Rprinter a remote printer or a local printer (r/l)? r
```

5. Enter the name of the remote printer's host.

For example:

```
Please enter the name of the remote host that  
Rprinter
```

```
is attached to:
```

```
HOSTNAME
```

```
Printer RPrinter is connected to host HOSTNAME
```

6. Confirm that the entries are correct.

For example:

```
Is this correct?(y/n)y
```

7. Specify that the RLP extended function (valid when the print server is SCO-UNIX) will not be used.

For example:

If HOSTNAME currently runs SCO OpenServer Release 5 or above, it can support the extended remote line printer protocol. Do you want to turn on the "extended RLP protocol" support flag?
If you are not sure, answer "n"? (y/n)[n]n

8. Specify whether the created printer is to become the default printer.

For example:

Would you like this to be the system default printer?
(y/n)y

Files are printed using the lpr command.

For example:

lpr -d RPrinter Print-File-Name

Using the ftp command

ftp commands are common to all UNIX systems.

ftp programs use interface that are common for all unix systems.

The following is an example of printing using the ftp command (the entry operations are underlined).

```
ftp> open 22.33.44.55
```

```
Connected to 22.33.44.55
```

```
220 PR-Ifx(22.33.44.55) ftp server ready.
```

```
Name : __
```

```
331 Password Required for (No Name).
```

```
Password:___
```

```
230 User logged in.
```

```
200 Type set to I.
```

```
ftp> put binary file
```

```
200 PORT command successful.
```

```
150 Opening data connection for binary_file
```

```
226 Transfer complete
```

```
ftp> bye
```


Chapter 10

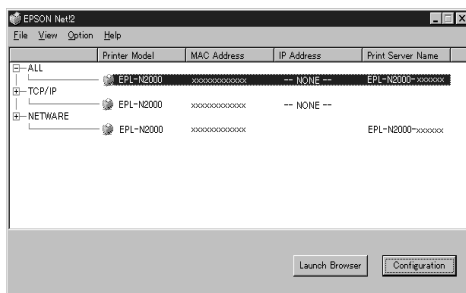
The EPSON Net!2 Setup Utility

This chapter describes the functions of EPSON Net!2 for Windows, Macintosh, and Intranet.

EPSON Net!2 for Windows

EPSON Net!2 dialog box

This section describes the EPSON Net!2 dialog box.



Category:

The three categories are ALL, TCP/IP, and NETWARE, and the printer list is shown as a tree structure. The details of each category can be shown or hidden by clicking the + or - at the head of each category.

Note:

If IPX the NetWare (communication protocol) is not used, the NetWare category will not be displayed.

Items:

Printer Model, MAC Address, IP Address, and Print Server Name items are shown. When you click an item header, the list is sorted in ascending or descending order depending on the item you click. The display width for each item can be controlled by dragging the right edges of the item headers.

Launch Browser button:

Select the printer you want to configure on the EPSON Net!2 screen, and then click the Launch Browser button. EPSON Net!2 for Intranet will start to configure the Ethernet card. EPSON Net!2 for Windows automatically closes when the browser launches.

Configuration button:

Select the printer you want to configure from the printer list on the EPSON Net!2 dialog box, and click this button to configure the Ethernet card using EPSON Net!2.

Menu Bar

File menu:

- Configuration
Starts to configure the printer you have selected.
This has the same effect as the Configuration button.
- Exit
Exits EPSON Net!2 for Windows.

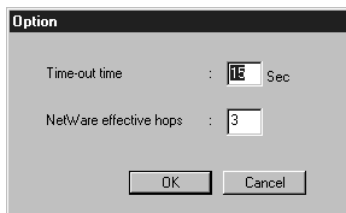
View menu:

- Refresh
All printers are accessed again, and the list is updated to the latest information.

Option menu:

❑ Option

Sets the performance of EPSON Net!2. The value set here is saved by clicking OK, and take effect the next time EPSON Net!2 is run.



Time-out time:

Sets the time-out used for communication by EPSON Net!2 for Windows to a value between 3 and 99. The default value is 15 seconds.

Note:

When the network is large and many Ethernet cards are used, a longer time-out is recommended.

NetWare effective hops:

Set the number of hops on the NetWare network to the Ethernet card when searching for printer information. All cards within this number of hops are searched and listed. You can set the number of hops from 0 to 15. The default value is 3.



Caution:

Set a small value for the number of hops. If you set a large number of hops, many search packets will be generated, causing a rise in network traffic. If you use a dial-up router, account faults may be caused by passing the search packets through the line.

❑ Subnet Settings

Use when you want to get the interface card's information of the other segment. See "To get the interface card's information of the other segments" on page 3-12.

Item	Explanation
Subnet	Type the subnet address you want to search from 0 to 255.
Subnet List box	The interface cards in the subnet address you added to the Subnet box are searched and are listed on the EPSON Net!2 dialog box.
Add button	Adds the subnet address to the Subnet List box.
Delete button	Deletes the subnet address from the Subnet List box by selecting the subnet address and then clicking the Delete button.
OK	Exit the Subnet Settings.

❑ Queue Settings

Use when create a print queue and set the queue information to the NetWare file server. See "Create and Set the Queue Using EPSON Net!2" on page 4-39.

Only Bindery queue is supported. You will have to log onto the NetWare server with supervisor privileges.

Item	Explanation
Queue List	Shows the file server's list which logged in as a supervisor mode. Double-click the file server to show the queues in the file server.
New button	Creates a new queue. When you click this button, the Create Queue dialog box appears.
Delete button	Deletes the queue by selecting the queue and then clicking the Delete button.

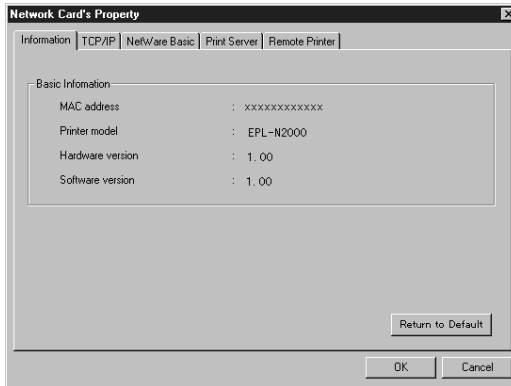
Create Queue dialog box

Item	Explanation
File server name	Shows the file server name selected in the tree.
Queue name	Type a queue name up to 47 characters.
Printer name	Type a printer name up to 47 characters.
Print server name	Select a print server from the drop-down list.
OK	Assigns the queue to the file server and returns to the previous dialog box.
Cancel	Cancels any changes and returns to the previous dialog box.

Setting dialog boxes

Information tab

The Information tab shows the Ethernet card parameters. Click the printer listed in the EPSON Net!2 dialog box, and click Configuration to display the following dialog box.



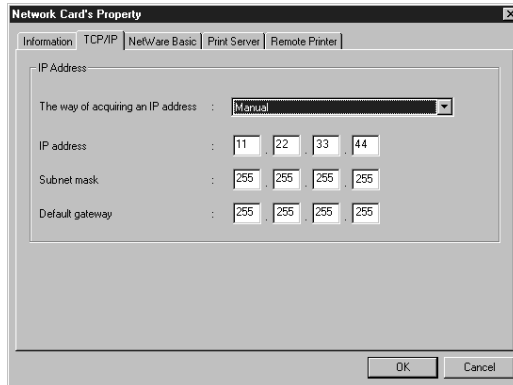
Items

Explanations

MAC address	Shows the name of Ethernet card. You can check the MAC address from the status sheet or the sticker on the card.
Printer model	Shows the printer name.
Hardware version	Shows the version of the Ethernet card.
Software version	Shows the version of the Ethernet card.
Return to Default	Resets all configuration settings of the Ethernet card to the default settings. This is the same as initializing the Ethernet card.
OK	Updates the settings and returns to the EPSON Net!2 dialog box.
Cancel	Cancels any changes and returns to the EPSON Net!2 dialog box.

TCP/IP tab

Specify TCP/IP settings on the TCP/IP tab. See Chapter 3 for details.



Items

The way of acquiring an IP address:

IP address

Subnet mask

Default gateway

OK

Cancel

Explanations

Select the way of acquiring an IP address from Manual, RARP, BOOTP, or DHCP.

Set the IP address for the Ethernet card.

Set the subnet mask of the IP address.

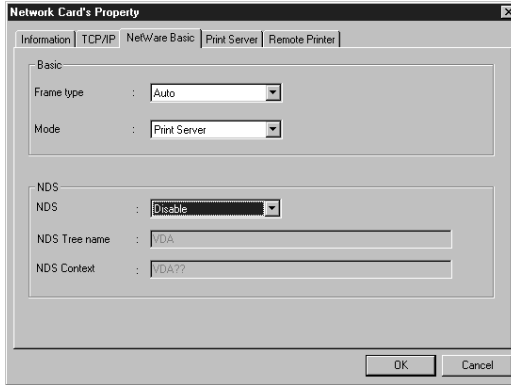
Set the gateway.

Updates the settings and returns to the EPSON Net!2 dialog box.

Cancels any the changes and returns to the EPSON Net!2 dialog box.

NetWare Basic tab

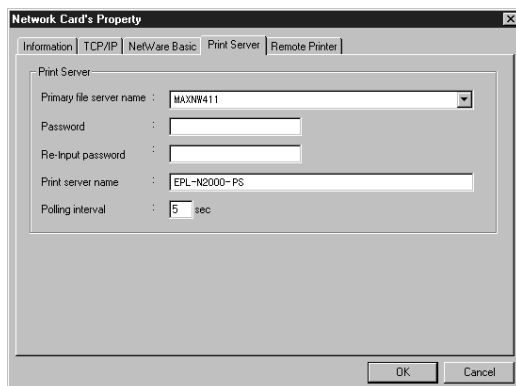
You can make NetWare basic settings on the NetWare Basic tab. See Chapter 4 for details.



Items	Explanations
Frame type	Select the frame type.
Mode	Select the mode from Print Server, Remote Printer, or Standby.
NDS	Enable or Disable NDS.
NDS Tree Name	Type the NDS tree name.
NDS Context	Type the NDS context.
OK	Updates the settings and returns to the EPSON Net!2 dialog box.
Cancel	Cancels any changes and returns to the EPSON Net!2 dialog box.

Print Server tab

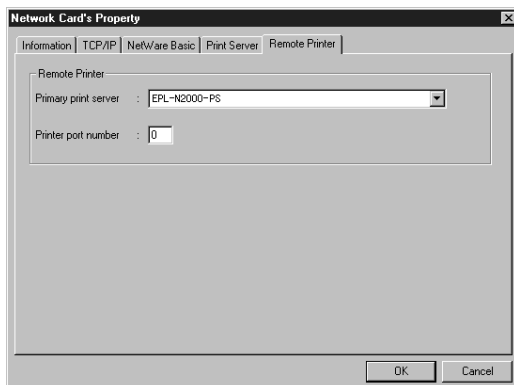
Make settings on this tab when you use the Ethernet card in Print Server mode. See Chapter 4 for details.



Items	Explanations
Primary file server name	Select the server where you create a print queue.
Password	Type the print server password if necessary.
Re-input password	Re-input the password.
Print server name	Type the print server name.
Polling interval	Type the polling interval in seconds.
OK	Updates the settings and returns to the EPSON Net!2 dialog box.
Cancel	Cancels any changes and returns to the EPSON Net!2 dialog box.

Remote Printer tab

Make settings on this tab when you use the Ethernet card in Remote Printer mode. See Chapter 4 for details.



Items

Primary print server

Printer port number

OK

Cancel

Explanations

Select the primary print server name.

Type the printer port number.

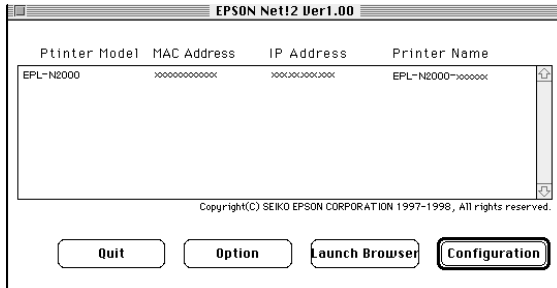
Updates the settings and returns to the EPSON Net!2 dialog box.

Cancels any changes and returns to the EPSON Net!2 dialog box.

EPSON Net!2 for Macintosh

EPSON Net!2 dialog box

This section describes the EPSON Net!2 dialog box.



List:

Lists the Printer Model, MAC Address, IP Address, and Printer Name.

Option (Time-Out):

Sets the time-out used for communication by EPSON Net!2 to a value between 3 and 99 seconds. The default value is 5 seconds.

Launch Browser button:

Select the printer you want to configure on the EPSON Net!2 screen, and then click the Launch Browser button. EPSON Net!2 for Intranet will start to configure the Ethernet card. EPSON Net!2 for Macintosh automatically closes when the browser launches.

Configuration button:

Select the printer you want to configure from the printer list in the EPSON Net!2 dialog box, and click this button to configure the Ethernet card using EPSON Net!2.

Quit button:

Click this button to exit EPSON Net!2.

Setting dialog boxes

You can make the IP address setting and AppleTalk setting in the dialog below. See Chapter 3 for Setting the IP Address and Chapter 5 for Using Macintosh for more details.

EPSON Net!2

IP Address Configuration

IP Address Setting

Enable DHCP

Enable BOOTP

Enable RARP

Manual

IP Address : 11 . 22 . 33 . 44

Subnet Mask : 255 . 255 . 255 . 255

Default Gateway : 255 . 255 . 255 . 255

AppleTalk Configuration

Printer Setting

Printer Name : EPL-N2000-xxxxxx

Entity Type : EPSONPCL5

AppleTalk Setting

Zone Name : *

Network Number Set : AUTO

Network Number for Manual Mode(0-65535) :

Return to Default Cancel Send

IP Address Configuration:

Items	Explanations
IP Address Setting	Select the method of acquiring an IP address as Manual, RARP, BOOTP, or DHCP.
IP Address	Set the IP address for the Ethernet card.
Subnet Mask	Set the subnet mask of the IP address.
Default Gateway	Set the gateway.

AppleTalk Configuration:

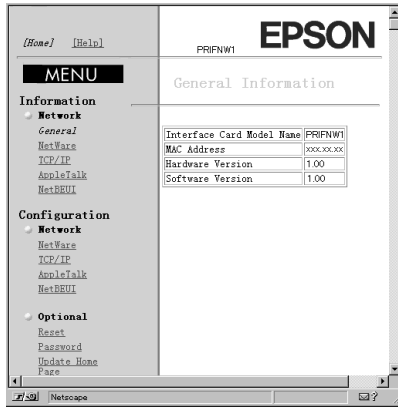
Items	Explanations
Printer Name	Shows the printer name with the interface card.
Entity Type	Shows the Entity type of the printer attached with the interface card.
Zone Name	Set the Zone for AppleTalk.
Network Number Set	Specify the setting method for the AppleTalk network number.
Network Number for Manual Mode	Type the network number.
Return to Default	Resets all configuration settings of the Ethernet card to the default settings. This is the same as initializing the Ethernet card.
Cancel	Cancels the changes and returns to the EPSON Net!2 dialog box.
Send	Sends the settings for the Ethernet card to the printer.

EPSON Net!2 for Intranet

This section describes the function of EPSON Net!2 for Intranet.

Opening screen

Any user can access the following screen.



□ Interface card information

Items	Explanations
Interface Card Model Name	Shows the model of the Ethernet card.
MAC Address	Shows the name of the Ethernet card. You can check the MAC address from the status sheet or the sticker on the card.
Hardware Version	Shows the version of the Ethernet card.
Software Version	Shows the version of the Ethernet card.

□ Menu

Items	Explanations
Home	Returns to the opening screen.
Help	Shows the Help.
Information	Click the protocol name to display the current setting information.
General	Shows interface card information.
NetWare	Shows information about NetWare.
TCP/IP	Shows information about TCP/IP.
AppleTalk	Shows information about AppleTalk.
NetBEUI	Shows information about NetBEUI.
Configuration	You can change the settings by clicking the protocol name.
NetWare	Configure for NetWare.
TCP/IP	Configure for TCP/IP.
AppleTalk	Configure for AppleTalk.
NetBEUI	Configure for NetBEUI.
Reset	Resets or returns to the default setting.
Password	Set the password. Protects the network settings.
Update Home Page	Update EPSON Net!2 for Intranet.

Protocol information and Setting screen

- ❑ **NetWare screen (contents are same for both Information and Configuration screens).**

NetWare Basic Configuration

Items	Explanations
NetWare	Enable or Disable NetWare.
Primary Frame type	Select the frame type.
Mode	Select the mode from NDS Print Server, NDS Remote Printer, Bindery Print Server, Bindery Remote Printer, or Standby.
NDS Tree Name	Type the NDS tree name.
NDS Context	Type the NDS context.

Print Server Mode

Items	Explanations
Primary File Server Name	Select the server where you create a print queue.
Print Server Name	Type the print server name.
Polling Interval	Type the polling interval in seconds.
NetWare Password	Type the print server password.

Remote Printer Mode

Items	Explanations
Primary Print Server Name	Select the primary print server name.
Printer Port Number	Type the printer port number.
SUBMIT	Updates the settings.

- ❑ **TCP/IP screen (contents are same for both Information and Configuration screens).**

Items	Explanations
Get IP Address	Select the method of acquiring the IP address as Manual, RARP, BOOTP, or DHCP.
IP Address	Type the IP address for the Ethernet card.
Subnet Mask	Type the subnet mask of the IP address.
Default Gateway	Type the gateway.
SUBMIT	Updates the changes.

- ❑ **AppleTalk screen (contents are same for both Information and Configuration screens).**

Items	Explanations
AppleTalk	Enable or Disable AppleTalk.
Printer Name	Shows the printer name attached with the interface card.
Entity Type	Shows the Entity type of the printer attached with the interface card.
Zone Name	Input the AppleTalk zone.
Network Number Set	Specify the setting method for the AppleTalk network number.
Network Number for Manual Mode	Input the network number when you select Manual for the Network Number Set.
SUBMIT	Update the changes.

- ❑ **NetBEUI screen (contents are same for both Information and Configuration screens).**

Items	Explanations
NetBEUI	Enable or Disable NetBEUI.
NetBIOS Name	Type the computer name (NetBIOS name) up to 15 characters.
Workgroup Name	Type the workgroup or domain name up to 15 characters.
Device Name	Type the device name up to 8 characters.
SUBMIT	Update the changes.

Optional screen

- ❑ **Reset screen**

You can initialize or reset the Ethernet card.

Update is complete when the message “Configuration change is complete!” appears after clicking the SUBMIT button.

Items	Explanations
RESET button	Click RESET to take effect the changes. If you click RESET for each setting screen, or when restart the printer, you do not need to click this RESET button.
RETURN TO DEFAULT	Returns the interface card to the default settings.

❑ Password setting screen

The password set here protects the settings. You will be asked for the password when you update or change the settings on each setting screen. Update is complete when the message “Password change is complete!” appears after clicking the SUBMIT button.

Items	Explanations
Old Password	Input the old password.
New Password	Input the new password.
Re-input Password	Re-input the new password.
SUBMIT	Update the changes.

Note:

If you forget your password, you need to return the all settings to the default settings by clicking RETURN TO DEFAULT in the Reset under the Optional menu. Then, input the password again.

❑ Update Home Page screen

Normally, you do not need to make any changes here.

Note:

Update the Home Page only if EPSON Net!2 for Intranet has been corrupted.

Items	Explanations
Filename	Type a file name. Mount the CD-ROM included in this package, and click the Browse button to select the Index E.pac file.
UPDATE button	Updates to the specified file in Filename.

EPSON Status Monitor 2 (Windows only)

EPSON Status Monitor 2 is a utility program that monitors your printer and gives you information about the current status of the printer, including the amount of remaining ink or toner. If a print error occurs, the Status Monitor also provides you with a message describing the error. The Status Monitor allows you to print using the TCP/IP protocol with Windows 95.

For more information on using the Status Monitor, open the online help included with this utility.

Before using the Status Monitor, be sure to read the Readme file located on the EPSON Status Monitor 2 Disk 1 folder. This file contains the latest information on the Status Monitor.

To use in a NetWare environment

You can use the network printer through the NetWare server. Connect the printer to a Bindery queue or NDS queue in Windows 95, Windows NT 3.51, or Windows NT 4.0. Use IntranetWare Client32 Ver1.12 or later if you are using Windows 95. Use IntranetWare Client if you are using Windows NT. See the EPSON Status Monitor 2 Readme file for more information about NDS support. You must set the port number to 0 when using Remote Printer mode.

If you use your printer in a NetWare environment, you need to connect to the print queue that is assigned to your printer before installing EPSON Status Monitor 2.

1. Click Start, point to Settings, and click Printers.
2. Click Add Printer.
3. Select Network printer, and click Next.
4. Double-click the NetWare file server that services the print queue assigned to your printer.
5. All of the queues serviced by that file server appear in a list. Select the correct print queue, and click OK. (If the printer driver is not installed, a dialog box appears prompting you to select the printer driver.)
6. Make the default printer setting and click Next.
7. Click Finish.

Installing EPSON Status Monitor 2

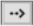
Note:

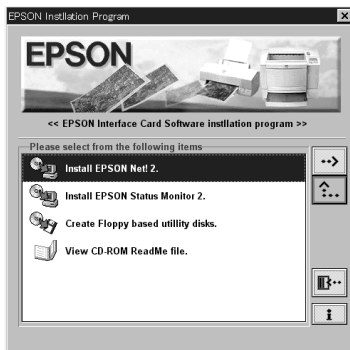
Turn off all other active applications (such as virus protection). For instructions on how to do this, see your application or Windows documentation.

Note for NT 3.51 & 4.0:

Before starting the installation, you need to log on as Administrator.

1. Insert the Software CD-ROM shipped with this package in the CD-ROM drive.

2. Click Install EPSON Status Monitor 2, and then click  button.

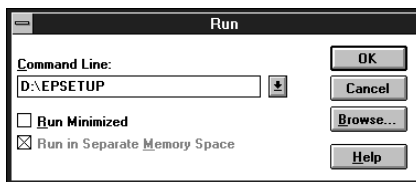
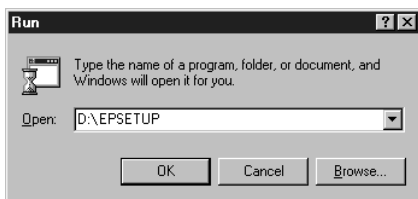


Note:

- If the screen above does not appear automatically, follow these two steps.*
- If you use Windows 95 or Windows NT 4.0, click Start and Run. If you use Windows NT 3.51, choose Run from the File menu in the Program Manager.*
- Type D:\EPSETUP and click OK. If you inserted the CD-ROM in a drive other than drive D, substitute the appropriate letter.*

Windows 95 / NT 4.0

Windows NT 3.51



3. Read the on-screen instructions and click **Next**.

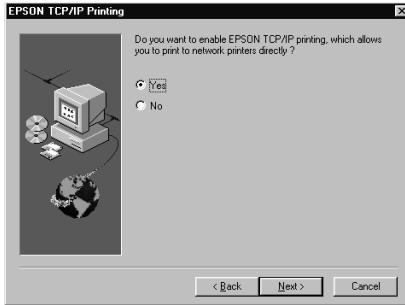


4. Click **Next**, or if you want to change the destination directory, click **Browse** and select your directory.



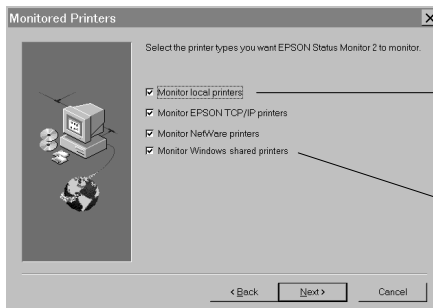
Note for Win 95:

Select **Yes** in the screen below to enable **EPSON TCP/IP** printing, and then click **Next**. **Windows NT 3.51** and **Windows NT 4.0** support this feature, so this screen does not appear in those systems. This screen only appears if **TCP/IP** is installed.



5. Select the type of the printer(s) you want to monitor and click **Next**. The printer types that you can monitor and the protocols you need to use to monitor those printer types vary from system to system. For more information, see **Introduction** on page 6 to 9.

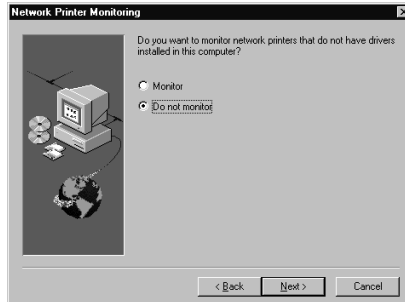
Windows NT 4.0



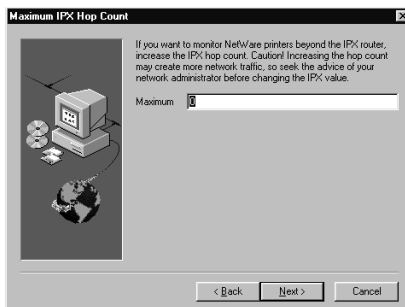
Not appear in
Windows NT 3.51

Not appear in
Windows 95

6. Select Monitor to monitor network printers that do not have drivers installed in this computer. Select Do not monitor only if network traffic is a problem. Click Next.



For Netware network-based printers:
In the screen shown below, set the number of hops from 0 to 15 and click Next. This option is available only if the IPX/SPX protocol is installed in your computer and you selected Monitor NetWare printers in step 5.



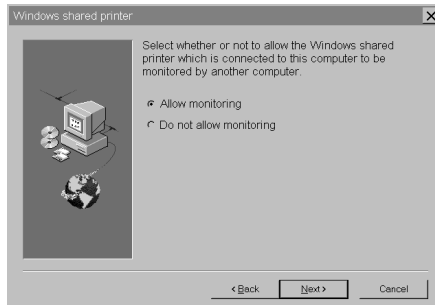
Caution:

If you have dial-up routers in a NetWare environment, they may automatically dial up the next hop and you are likely to be charged for the line connection depending on the number of hops you set. To prevent this and to keep network traffic to a minimum, set hops carefully. For more information, see "Monitoring printers beyond routers" on page 11-34.

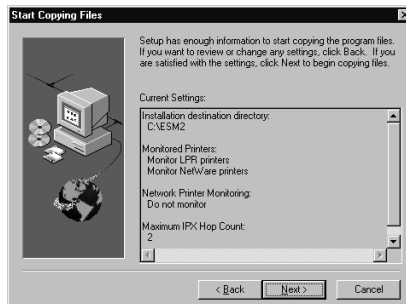
7. Select **Allow monitoring to monitor Windows shared printers**. Select **Do not allow monitoring to not monitor Windows shared printers**. Click **Next**.

Note for Win 95:

The screen shown below does not appear in Windows 95.



8. Check the current settings and click **Next**. The installation program will start installing the necessary files. Follow the instructions on the screen.



9. Select Yes and click Finish to restart Windows when you see the following screen.



Selecting a Printer to Monitor

Before you can start monitoring a TCP/IP or LPR printer with EPSON Status Monitor 2, you need to select the printer in your operating system. Follow the steps for your operating system: Windows 95, below; NT 3.51, page 7-3; and NT 4.0, page 7-6.

Note:

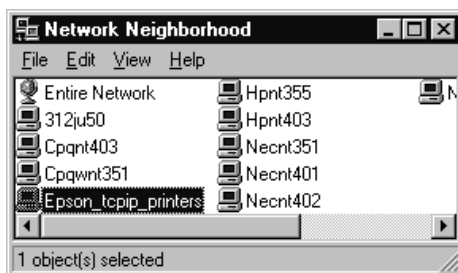
The Ethernet card's IP address must be set; otherwise the printer does not appear on the screen. For instructions on installing the card, see Chapter 1 or printer user's guide, and for instructions on setting the IP address for the card, see Chapter 3.

Windows 95

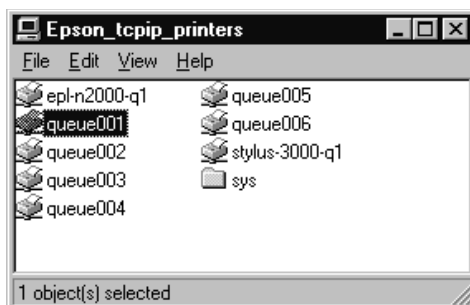
Note:

If the EPSON TCP/IP Printing setting is not set to Yes for Windows 95, you cannot follow these steps. See step 4 of the installation instructions on page 11-4 for more information.

1. Double-click the Network Neighborhood icon on your desktop.
2. Double-click EPSON_TCPIP_Printers, so that available printers equipped with Ethernet cards in the same segment as your computer appear in the window.



3. Double-click the target printer.



4. Follow the instructions that the Wizard gives you on the screen. If you are required to install the printer driver, set up the printer referring to the user's guide that came with the printer.



Note:

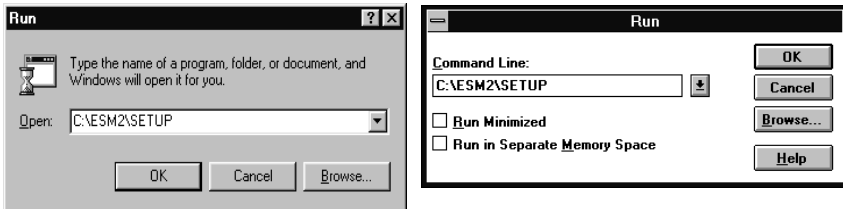
To install a printer located beyond a router, double-click Add Printer in the Printers folder to start the Add Printer Wizard. Set the IP address for the target printer by typing \\EPSON_TCPIP_Printers\ followed by your IP address.



Making Status Monitor Settings

You can change the settings in EPSON Status Monitor 2 by as described below.

1. Open the Run dialog box from the Start menu or the Control Panel depending on your system. Type the path to the directory where you installed the Status Monitor, followed by Setup. Then click OK.



When you have installed the program in directory ESM2 of drive C, type C:\ESM2\SETUP.

Note:

If you installed the program in a directory other than ESM2, type the path to the directory instead of ESM2. If you installed the program in drive C, type C:\[path]\SETUP.

2. Follow the instructions on the screen.

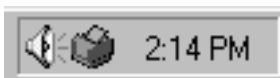
Note for NT 3.51 & 4.0:

Users can individualize their own settings without affecting the settings of other users.

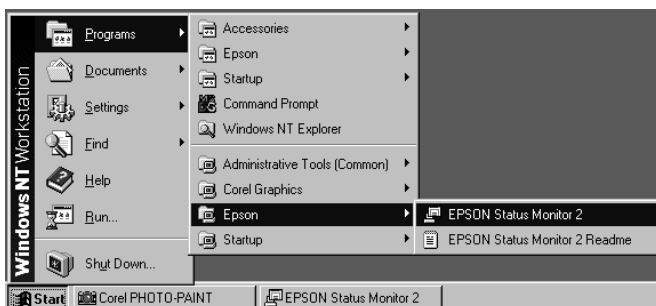
Starting EPSON Status Monitor 2

From Windows 95 and NT 4.0

Double-click the Status Monitor icon on the right side of the taskbar.



You can also start EPSON Status Monitor 2 by clicking Start, pointing to Programs and EPSON, and then clicking EPSON Status Monitor 2.



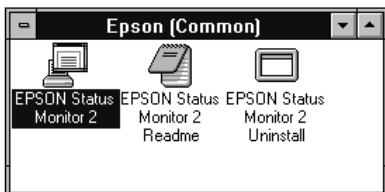
From Windows NT 3.51

Double-click the EPSON Status Monitor 2 icon on the screen.



Note:

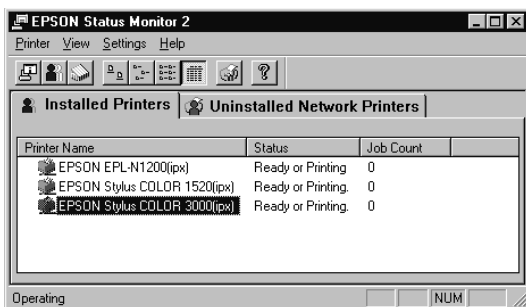
You can also start EPSON Status Monitor 2 from within the Epson program group in Program Manager.



Basic Operating Procedure

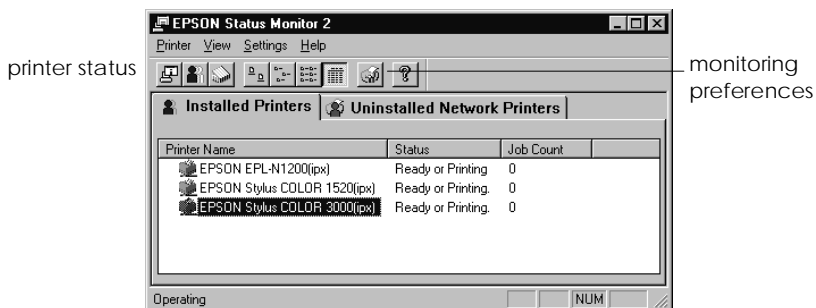
This section describes the basic operation and functions of EPSON Status Monitor 2.

1. Click a printer in the EPSON Status Monitor 2 window. The Installed Printers list shows the current status of all EPSON printers that have printer drivers installed in your computer.

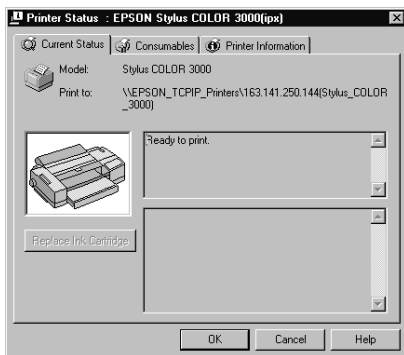


For more information about the Status Monitor window, see page 11-16.

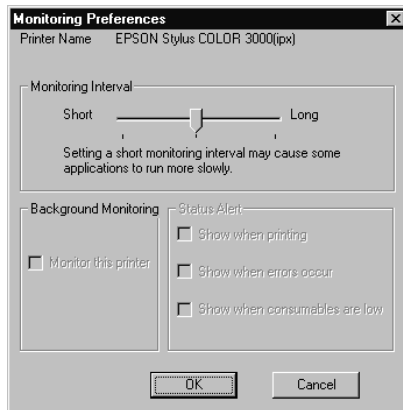
2. Click the printer status icon to see detailed information about the printer, see page 11-16 for more information. Click the monitoring preferences icon to make various settings, see page 11-26 for more information.



3. Click OK to close the dialog box after checking the printer status or making preference settings.



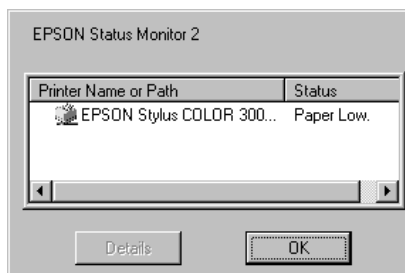
For details, see page 11-16.



For details, see page 11-26.

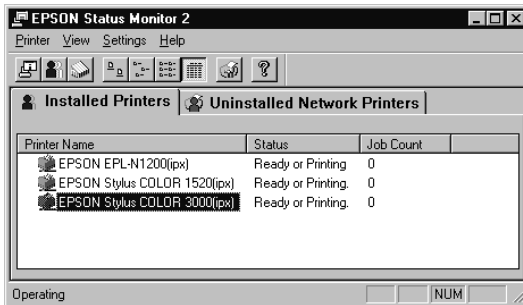
Note:

If you click the Monitor this printer check box in the Monitoring Preferences dialog box, a Status Alert message appears according to the conditions you select in the Status Alert box. For detailed information, see “Background Monitoring Icon and Status Alert” on page 11-27.



Main window

The Main window shows the current status of the printers. The color of the printer icon changes according to the printer's status.



Printer Icon:	Meaning:
Green	Ready to print.
Yellow	Ready to print; however the printer has detected something that may become a problem if it isn't fixed.
Red	Cannot print because of a problem.
Gray	Cannot monitor the printer.

Menus

Printer menu

This menu provides you with detailed information on printer and print job status for any printer you select in the Installed Printers list. Click Printer Status for detailed information on the selected printer's status, or click Job Status to get details on jobs waiting to print. Click Select Paper Memory to open the Paper Memory Selection dialog box, where you can select a saved paper type to print on. The Select Paper Memory command is not available on some printers. Click Close to close the Status Monitor.

If you select Job Status while monitoring an EPSON TCP/IP printer, the following menu commands are available but do not take effect:

Printer menu	Pause Printing, Purge Print Jobs
Document menu	Pause Printing, Cancel Printing

View menu

This menu lets you control the appearance and content of the EPSON Status Monitor 2 window and the Installed Printers list. You can choose to show or hide the toolbar and status bar, and you can choose whether large or small icons will appear next to the printers in the Installed Printers list. Clicking List on this menu displays only the printer name and icon in the Installed Printers list. Clicking Details displays the printer name, status, and job count. Click Refresh to update the status information shown in the Installed Printers list.

Settings menu

The Settings menu gives you control over the Status Monitor's background monitoring feature, and allows you to add and delete printers from the Installed Printers list. Select a printer from the Installed Printers list and click Monitoring Preferences to turn background monitoring on or off, and to adjust the monitoring preferences for the selected printer. Click Add Printer to add a new printer to the list, or click Delete Printer to delete the selected printer from the list. Point to Background Monitoring to select when to start and stop the background monitoring feature. Click Select background monitoring icon to specify the type of printer icon that is displayed on the taskbar when background monitoring is turned on.

Help menu

Choose Help Topics from this menu to view online help about the EPSON Status Monitor 2. Click About to view the Status Monitor's version number and copyright information.

Toolbar

Many of the commands available on the Status Monitor menus can be accessed directly by clicking the buttons on this toolbar. If you point to a toolbar button, the corresponding menu command appears briefly on your screen, and an explanation of the button's function appears in the Status Bar at the bottom of the Status Monitor window.

Note for NT 3.51 & 4.0:

Job Status is not available.

Note:

- ❑ *Close the Printer list window when you do not need it: this window uses computer resources if left open.*

- ❑ *If you change the printer port setting (Print to the following port or Print to) in the printer driver, quit EPSON Status Monitor 2 as described in "Stopping Monitoring" on page 11-29, and then restart it.*

Installed Printers list

This list displays information about the EPSON printers that are connected to your computer through the network and have printer drivers installed in your system. To change the printer information that is displayed in this list, see "View menu" on page 11-17.

Printer Name

Provides the names of the installed printers. You can add or delete printers to be monitored by choosing Add Printer or Delete Printer from the Settings menu. To save computer resources and reduce network traffic, delete printers you do not need to monitor. (Doing so does not remove the printer driver from your computer.)

Status

Displays brief messages describing the current status of the printer.

Job Count

Displays the number of print jobs waiting to be printed from a particular printer.

The number is not displayed for Windows shared printers.

Note:

You can rearrange the order of the printers in the list by clicking the Printer Name, Status, and Job Count title bars.

Uninstalled Network Printers list

The Uninstalled Network Printers list displays non-EPSON printers and EPSON printers that do not have installed printer drivers.

Note:

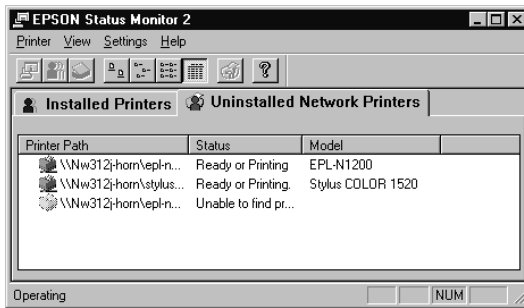
You need to check Monitor in the Network Printer Monitoring dialog box during installation for the Uninstalled Network Printers list to be available.

To monitor network printers that do not have drivers installed in your computer, add uninstalled network printers as described on the next page.

Printer Path: Shows the network printer path.

Status: Shows the current printer status.

Model: Shows the model name of the network printer.



Note for NT 3.51 & 4.0:

You need to log on as the Network Administrator to use this feature.

Note:

Delete printers that appear in this list but are not always connected to the network and printers that the Status Monitor cannot get status information about, because they unnecessarily use system resources. To delete a printer, select the printer and click Delete Printer on the Settings menu.

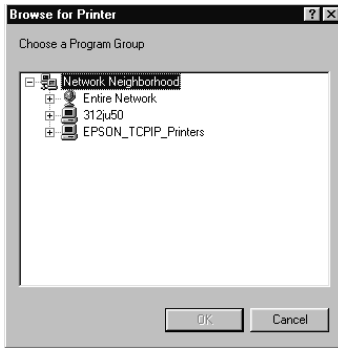
Adding uninstalled network printers

Before you start monitoring uninstalled network printers, you need to add them to the Uninstalled Network Printers list. Follow these steps:

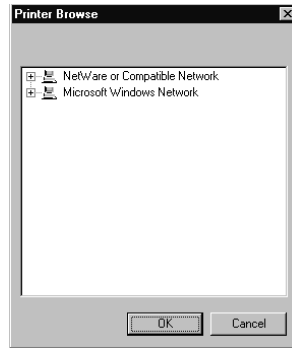
1. Click the Uninstalled Network Printers list.
2. Click Add Printer on the Settings menu.
3. Type the path or IP address of the printer. If you do not know either, click Browse to select the target printer from the network.

Note for using Browse to add a printer:

The Browse for Printer window shows the network configuration. Do not select printers that you cannot monitor.



Windows 95



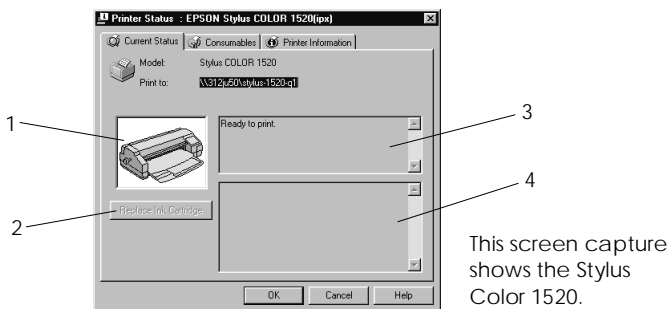
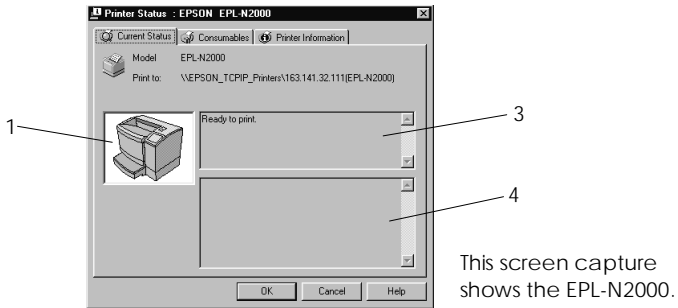
NT 3.51 and NT 4.0

Getting detailed information about the printer status

To get detailed information about a printer, right-click that printer and select Printer Status, or select the printer and click Printer Status on the Printer menu. The Printer Status window appears. There are three menus in the Printer Status window, and you can switch between menus by clicking the tabs at the tops of the menus.

Current Status menu

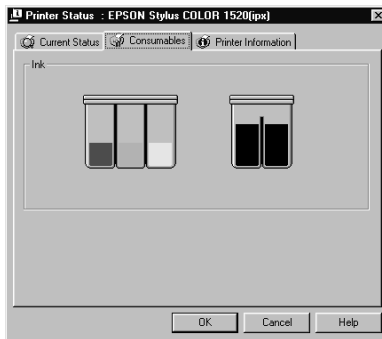
You can check the status of the selected printer on the Current Status menu. If a problem occurs, the most likely solution appears in the Troubleshooting Message box.



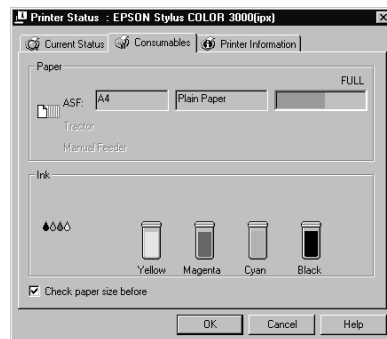
- | | |
|----------------------------------|---|
| 1. Image icon: | Shows the printer status graphically. |
| 2. Replace Ink Cartridge button: | Explains how to replace an empty ink cartridge. Follow the instructions on the screen. |
| 3. Current Status Message box: | Explains the current status of the selected printer. |
| 4. Troubleshooting Message box: | Explains how to solve problems that may occur. If the problem is not solved after following the instructions given here, see the troubleshooting section of the affected printer. |

Consumables menu (EPSON Stylus COLOR/EPSON Stylus Photo Series)

The information given on the Consumables menu varies according to the printer you are monitoring.



The Consumables menu for the EPSON Stylus COLOR 1520.

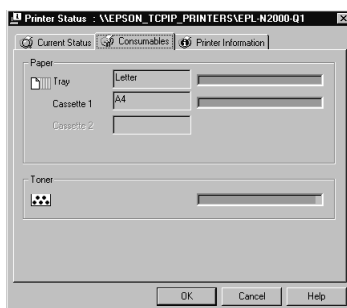


The Consumables menu for the EPSON Stylus COLOR 3000.

Remaining color ink:	Shows the amount of color ink remaining.
Remaining black ink:	Shows the amount of black ink remaining.
Remaining paper:	Shows the approximate amount of remaining paper. This feature is available only on some printers.
Check paper size before:	Defines whether the paper size is checked before printing. This feature is available only on some printers.

Consumables menu (EPL Series)

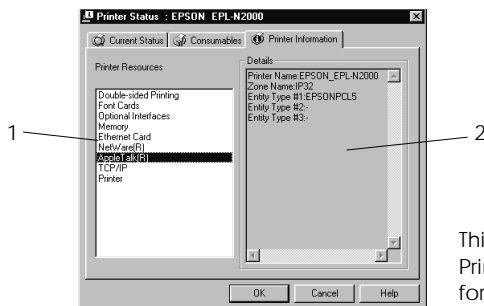
The information given on the Consumables menu varies according to the printer you are monitoring.



Remaining paper:	Shows the paper size and approximate amount of remaining paper in each paper source.
Remaining toner:	Shows the amount of toner remaining.

Printer Information menu

The Printer Information menu provides you with information about the selected printer and its options.



This example shows the Printer Information menu for the EPL-N2000 printer.

List:

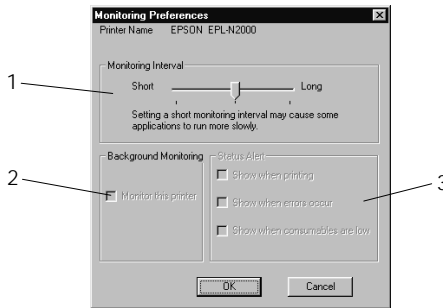
1. **Printer Resources:** Provides information about the printer and the print server.
2. **Details:** Provides details about the item selected in the Printer Resources list.

Setting monitoring preferences

To make specific monitoring settings, right-click a printer and select Monitoring Preferences, or select the printer and click Monitoring Preferences on the Settings menu. The Monitoring Preferences window appears.

Note for NT 3.51 & 4.0:

Monitoring Preferences settings made from one computer do not affect the settings made from another computer.



Settings:

- 1. Monitoring Interval:** Determines how often the Status Monitor checks for new printer status information, from short (every 2 seconds) to long (every 60 seconds). The default setting is 10 seconds.
- 2. Background Monitoring:** Click the Monitor this printer check box to monitor the selected printer. A check in the check box means the selected printer is being monitored.
- 3. Status Alert:** Determines under what conditions the Status Alert window will open. See “Status Alert” on page 11-28.

Background Monitoring Icon and Status Alert

When you click and select the Monitor this printer check box in the Monitoring Preferences dialog box, EPSON Status Monitor 2 monitors the selected printer. The background monitoring icon changes its color according to the printer's status, and the Status Alert window opens according to the conditions you select in the Monitoring Preferences dialog box.

Background monitoring icon

A printer-shaped background monitoring icon appears on the taskbar after you install the EPSON Status Monitor 2.

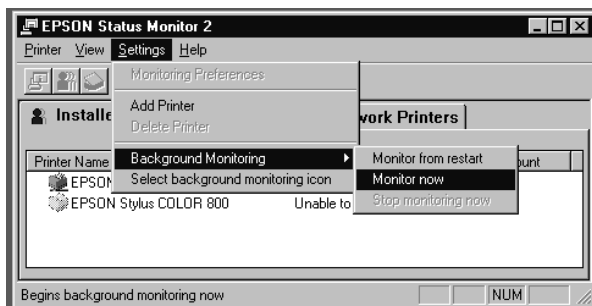
Double-clicking the background monitoring icon opens the EPSON Status Monitor 2 window. Right-clicking this icon opens a pop-up menu where you can choose to have the Status Alert displayed in front of other windows on the desktop. This pop-up menu also allows you to turn off the background monitoring feature.

The background monitoring icon changes its color according to the printer status:

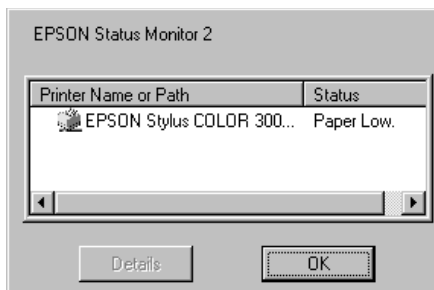
Printer Icon:	Meaning:
Green	Ready to print.
Yellow	Ready to print; however the printer has detected something that may become a problem if it isn't fixed.
Red	Cannot print because of a problem.
Gray	Cannot monitor the printer.

Note:

If you turn off the monitoring feature, the background monitoring icon disappears from the taskbar and the Status Alert window will not open. You can restart background monitoring by clicking Monitor now on the Settings menu (as shown below) and by selecting Monitor this printer in the Monitoring Preferences dialog box as explained on page 11-26.

**Status Alert**

The Status Alert window opens above the background monitoring icon under the conditions you select in the Monitoring Preferences dialog box. Click the printer name and click Printer Status on the Printer menu to open the Current Status menu.



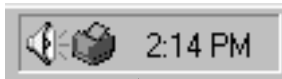
For details about the Current Status menu, see page 11-22.

Stopping Monitoring

EPSON Status Monitor 2 automatically monitors the printer or printers you designate. To stop monitoring a printer, follow these steps:

1. Double-click the icon of EPSON Status Monitor 2 at the bottom of your desktop.

Windows 95 and NT 4.0



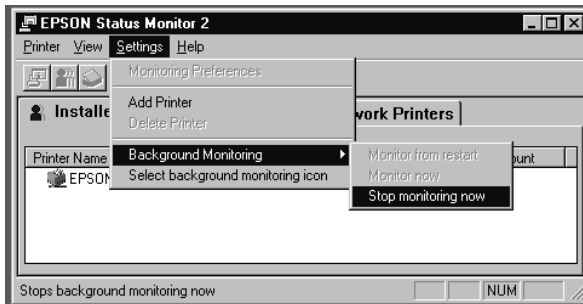
Double-click

NT 3.51

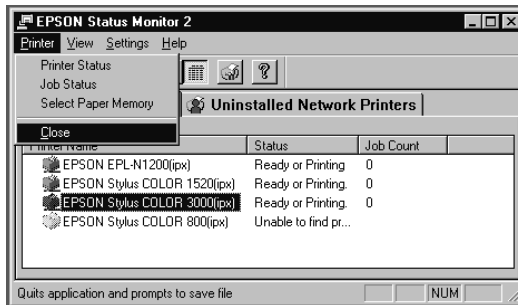


Double-click

2. Click Settings, point to Background monitoring, and then click Stop monitoring now.



3. Click Printer and click Close.



Note:

You can restart the Status Monitor by clicking Monitor from restart or Monitor now on the Settings menu. If you stop monitoring and close EPSON Status Monitor 2, the background monitoring icon disappears from the taskbar of Windows 95 and NT 4.0, but the icon remains on the desktop in Windows NT 3.51. To restart the Status Monitor, see “Starting EPSON Status Monitor 2” on page 11-12.

Uninstalling EPSON Status Monitor 2

You can remove EPSON Status Monitor 2 from your computer as follows:



Caution:

Quit other programs such as virus check programs before removing EPSON Status Monitor 2.

Note for Win 95:

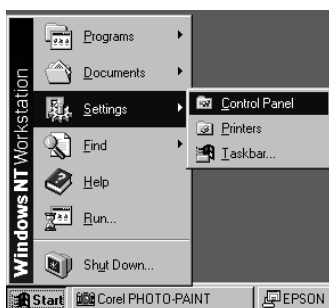
If EPSON TCP/IP printing is enabled, disable it as described on page 11-5.

Note for NT 3.51 & 4.0:

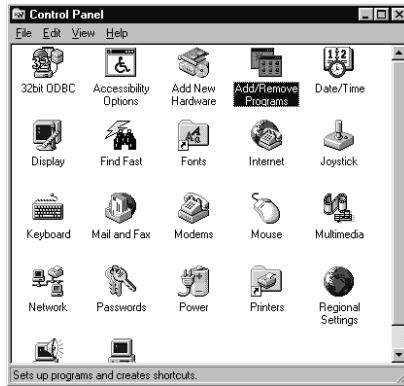
You need to log on as the Administrator.

From Windows 95 and NT 4.0

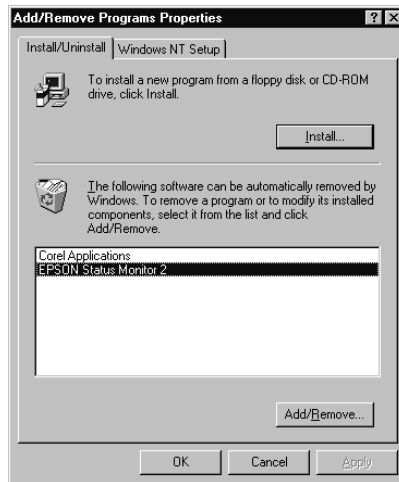
1. Close EPSON Status Monitor 2 as described in “Stopping Monitoring” on page 11-29.
2. Click Start on the taskbar, point to Settings, and then click Control Panel.



3. Double-click Add/Remove Programs.



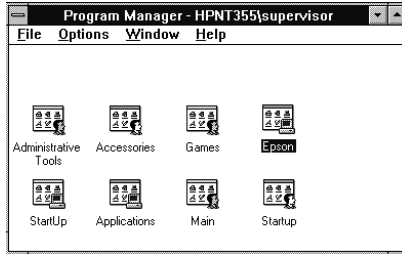
4. Click EPSON Status Monitor 2 and click the Add/Remove button.



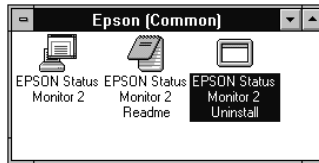
5. Follow the instructions on the screen.

From Windows NT 3.51

1. Double-click Epson in the Program Manager.



2. Double-click EPSON Status Monitor 2 Uninstall.



3. Follow the instructions on the screen.

Note for NT 3.51 & 4.0:

When you try to uninstall EPSON Status Monitor 2 when using IntranetWare Client for NT in Windows NT 3.51/4.0, a message reading "Could not complete Setup because EPSON Status Monitor 2 is running. Quit EPSON Status Monitor 2 and run Setup again" may appear, and uninstall processing may terminate. In this case, delete the following files from the directory where EPSON Status Monitor 2 is installed, and then delete EPSON Status Monitor 2. Deleting these files will cause no errors in the operation of Novel IntranetWare Client for NT.

Files: NETWIN16.DLL, CLNWIN16.DLL, LOCWIN16.DLL,
NCPWIN16.DLL, NWIPXSPX.DLL, CLXWIN16.DLL,
CALWIN16.DLL

Tips for Using EPSON Status Monitor 2

Controlling the packet traffic on the network

The computer with EPSON Status Monitor 2 communicates with the printer across the network. If there are many monitoring computers and printers to be monitored, packet traffic increases and may slow down the network. Limit the number of monitoring computers and printers to be monitored to control network traffic.

It is a good idea to designate a single printer administrator who can monitor all printers on the network and allow others to monitor only the printer that they usually use. This is one way to decrease network traffic.

The monitoring interval also affects the network traffic. Make the interval longer for printers at a great distance on the network.

Monitoring printers beyond routers

When you monitor NetWare printers located beyond dial-up routers in the wide area network, you are likely to be charged because of the line connection. Consider the network configuration and set hops carefully on NetWare networks.

If you set one or more hops for the NetWare network, the search packet travels beyond the router. Even if there are no printers to be monitored beyond dial-up routers, it is likely that the dial-up line will be used and you will be charged more than you expect. If you do not monitor printers beyond routers, set 0 for the number of hops during installation. To reset the number of hops, reinstall the Status Monitor as described on page 11-2.

About uninstalled network printers

The Uninstalled Network Printers menu shows network printers that do not have drivers installed in your computer. Because you can monitor printers without installing printer drivers, this feature is useful for network printer administrators.

Chapter 12

Troubleshooting

General Problems

Fail to configure the Ethernet card or fail to print from the network.

Cause	What to do
Printer settings or network settings may be wrong.	First, check if you can print a status sheet by pressing the status sheet button, as described in Chapter 1. If not, set the interface mode of the printer's control panel to Auto or Option. If you can print a status sheet, check the network settings.

Unable to set the IP address using the arp commands.

Cause	What to do
The network cable may be disconnected.	Connect the network cable. Also, check the network environment.
The address of the router is set as the default gateway.	Set the IP address of your computer for the default gateway temporarily. After setting the IP address, return the IP address to the original value.

Unable to start EPSON Net!2 for Windows.

Cause	What to do
You have added or deleted protocols after installing EPSON Net!2 for Windows.	Uninstall EPSON Net!2 for Windows and reinstall it.

The message “NetWare cannot be used.” appears when you start EPSON Net!2.

Cause	What to do
There is no NetWare server.	You may disregard it if you are using a TCP/IP environment to print. Click OK to start EPSON Net!2 for Windows.

Unable to make settings using EPSON Net!2 for Intranet.

Cause	What to do
You haven't set the IP address for the Ethernet card.	Set the IP address for the Ethernet card using EPSON Net!2 for Windows/ Macintosh or the arp command, as described in Chapter 3. You can check the IP address on the status sheet.

How to get the IP address.

In order to acquire your IP address, you need to apply for NIC (Network Information Center) in your country. You may need to ask your system administrator.

Problems Specific to Your Network Environment

Windows NT Environment

Clients cannot print with TCP/IP via Windows NT Server 3.51 (NTFS).	
--	--

Cause	What to do
You have not changed the type of access.	You need to change the type of access in the \\WINNT35\system32\spool\PRINTERS directory of the NT Server. See "Change the type of access of the spool directory" on page 7-6.

No client except an administrator print via Windows NT Server 3.51/4.0.	
--	--

Cause	What to do
The CREATOR OWNER has been deleted from the Printer Permissions list, or the CREATOR OWNER is set to Print or No Access.	Add the CREATOR OWNER by clicking the Add button on the Printer Permissions dialog box, or set the CREATOR OWNER to Manage Documents (a default setting).

Windows 95 Environment

Dial-up connection dialog box appears when printing with TCP/IP via EPSON Status Monitor 2.

Cause	What to do
You have selected the phone line or the modem (for Internet Explorer 4.0x) for the Internet connection.	Printing will complete normally after you cancel this dialog, but the message appears every time you print until you change this setting.

You cannot open the file and cannot print when using Stylus printers from Windows 95.

Cause	What to do
Print Manager is not on.	On the EPSON Spool Manager's Queue Setup dialog box, select Spool to local printer and then check the Use Print Manager for this port box.

Cannot print correctly in NDS Print Server mode or NDS Remote Printer mode under Windows 95.

Cause	What to do
<p>You may not be able to print correctly under the following conditions:</p> <ul style="list-style-type: none">❑ When using NDS queue in Windows 95 (version OSR 2.1, with USB support)❑ When using the printers listed below:<ul style="list-style-type: none">EPSON Stylus COLOR 800/850/1520/3000,EPSON Stylus 1500,EPSON Stylus Pro 5000	<p>Open the target printer's properties dialog box. Click Capture Printer Port in the Details menu. Set LPT port for the Device name and \\(server name)\(print queue name) for the Path name, then click OK.</p>

NetWare Environment

Nothing prints even clients complete sending the data to the printer.

Cause	What to do
<p>Clients may not be registered, or the Ethernet card may not be logged in to the NetWare server.</p>	<p>Make sure clients are registered in the users of the print queue and the print server. Also, make sure the Ethernet card is logged in to the NetWare server. If you need more information about Print Server mode or Remote Printer mode, see Chapter 4 or your NetWare manual.</p>

You are likely to be charged for the line connection depending on the number of hops you set.

Cause	What to do
You haven't set a small number for the hops.	Set hops carefully to prevent a charge for the line connection and to keep network traffic to a minimum.

EPSON Net!2 will not start correctly.

Cause	What to do
Microsoft NetWare Directory Service is installed in your computer.	If you are using NDS service, use Novel NetWare Client32.

Macintosh Environment

Printers do not appear in the Chooser.

Cause	What to do
EtherTalk is not selected in the Network or in the AppleTalk of the Control Panel.	<ul style="list-style-type: none"><input type="checkbox"/> For models without Open Transport: Make sure to select EtherTalk in the Network of the Control Panel.<input type="checkbox"/> For models with Open Transport: Make sure to select EtherTalk in the AppleTalk of the Control Panel, and make sure AppleTalk is active in the Chooser. Also, check the network equipment including the hub cable.

Problems Using EPSON Status Monitor 2

The Current Status menu shows “A communication error has occurred.”

Cause	What to do
The printer is turned off.	Make sure that the power cord is properly plugged into the electrical outlet. Turn on the printer.
The printer is running the self-test or initializing itself.	Turn off the printer to terminate the self-test, and then turn it on again. Allow the printer enough time to finish initialization.
Multiple computers are monitoring a single printer, and the printer cannot reply to all of them at the same time.	Decrease the number of monitoring computers or make the monitoring interval longer in the Monitoring Preferences dialog box. See “Setting monitoring preferences” on page 11-26 and “Tips for Using EPSON Status Monitor 2” on page 11-34.
The printer is not ready to print.	Make sure the printer is ready to print. For details, see the user’s guide of your printer.

The status information does not match the real status of the printer.

Cause	What to do
EPSON Status Monitor 2 monitors the printer at intervals set in the Monitoring Preferences dialog box. A long interval may result in incorrect information.	Click Refresh on the View menu to update the information. Decrease the monitoring interval in the Monitoring Preferences dialog box if you find that the Status Monitor often displays data that is old. Wait until EPSON Status Monitor 2 monitors the printer next time.

NetWare printers cannot be monitored.

Cause	What to do
You are using EPSON Net!2.	You cannot use EPSON Status Monitor 2 and EPSON Net!2 at the same time. Quit EPSON Net!2 and use EPSON Status Monitor 2. If you use EPSON Net!2, quit EPSON Status Monitor 2 in advance.

You can only monitor NetWare printers in Remote Printer mode if the printer port number is set to 0.

Cause	What to do
This is set internally by EPSON Status Monitor 2.	Use the NetWare control tool to set the port number to 0.

NetWare print servers cannot be monitored beyond routers.

Cause	What to do
The number of hops is set to 0.	Change the number of hops according to “Making Status Monitor Settings” on page 11-11. See also “Tips for Using EPSON Status Monitor 2” on page 11-34.

NDS printers cannot be monitored.

Cause	What to do
You are not using Novel's Client.	If you are using Windows NT, use Novell IntranetWare Client for NT. If you are using Windows 95, use Novell IntranetWare Client 32 for Windows 95.

An existing printer cannot be found in Windows NT 3.51.

Cause	What to do
You may have logged on to the network before network modules were completely loaded.	Log on again. To clear this problem immediately after the operating system starts, log on after access to the hard disk drive is completed.

Cannot print when using EPSON TCP/IP in Windows 95.

Cause	What to do
An incompatible or invalid printer name is typed in the Print to the following port box of the printer's Properties dialog box.	Delete the unnecessary printer name. For example, "EPSON_TCPIP_Printers\255.255.255.255 (EPL-N2000)" should be "EPSON_TCPIP_Printers\255.255.255.255".
If you use the EPL-N1200 printer, only printers with the 7717 or later ROM version are compatible.	To confirm the ROM version number, print a status sheet and make sure the first four numbers of the Firmware Revision number are 7717 or higher. See Chapter 1 on page 1-2 for information on how to print a status sheet. Contact your dealer and purchase a ROM update if necessary.

An application error occurs, and NetWare printers cannot be monitored when Allow monitoring is selected for monitoring Windows shared printers under Windows NT 4.0.

Cause	What to do
There is a known bug in the operating system.	Install Service Pack 2 or higher before monitoring Windows shared printers under Windows NT 4.0.

NetWare printers cannot be monitored when Allow monitoring is selected for monitoring Windows shared printers under Windows NT 3.51/ 4.0.

Cause	What to do
Because of the specification of EPSON Status Monitor 2.	Double-click Services in the Control Panel and stop the EPSON Printer Status Agent service. Restart EPSON Status Monitor 2 and then restart the service. This procedure must be repeated every time you log on to Windows NT 3.51/4.0.

Windows shared printers cannot be monitored.

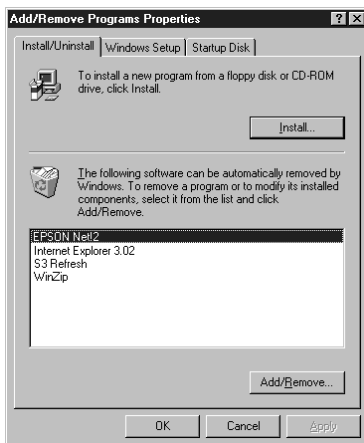
Cause	What to do
This is set internally by EPSON Status Monitor 2.	<p>Right-click the Network Neighborhood and then click Properties. Verify that File and printer sharing for Microsoft Networks is shown in the list of installed components.</p> <p>Verify that EPSON Status Monitor 2 is installed in the machine hosting the Windows shared printer, and be sure that the Windows shared printer is set for monitoring.</p> <p>You must set EPSON Status Monitor 2 settings in order to monitor Windows shared printers.</p>

Uninstalling EPSON Net!2

Follow the steps below to uninstall the EPSON Net!2 for Windows.

For Windows 95 Windows NT 4.0

1. Double-click the Control Panel icon in the My Computer window.
2. Double-click the Add/Remove Programs icon.
3. Select EPSON Net!2 and click the Add/Remove button.



4. The message “Are you sure you want to completely remove the selected application and all of its components?” appears on your screen, then click Yes. Uninstall is completed.

For Windows NT3.51

1. Double-click the Uninstall icon in the EPSON Net!2 window.
2. The message “Are you sure you want to completely remove the selected application and all of its components?” appears on your screen, then click Yes.
3. The message “Uninstall successfully completed” appears on your screen, then click OK to complete the uninstallation.

Appendix B

Specifications

Environmental

Operating temperature:	5° to 35° C (41° to 95° F)
Storage temperature:	-30° to 70° C (-22° to 158° F)
Operating humidity:	20% to 80%
Storage humidity:	5% to 95%
Operating Vibration:	0.4 G (5 Hz to 55 Hz)
Storage Vibration:	1 G (5 Hz to 55 Hz)
Shock:	4 G

Network Software

NetWare 3.1x or 4.1x
EtherTalk (AppleTalk)
lpr, ftp over TCP/IP protocol
NetBEUI
NetBIOS over TCP/IP protocol

Network Connectors

Connectors and Signal Assignment:
RJ-45: ISO/IEC8802-3 12.6 MDI Specification
BNC: ISO/IEC8802-3 10.6.3 MAU to Coaxial Connection Specification

Regulatory Approvals

EMC

FCC part 15B Class A

EN55022 Class A

EN50082-1

IEC801-2 ESD Immunity

IEC801-3 Radiated Immunity

IEC801-4 EFT/Burst Immunity

Reliability

MTBF for C82362*: 10,000 hours (power on, 100% duty)

MTBF for C82363*/C82364* 268,973 hours

MTTR: N/A (Replacement)

Regulatory Approvals for AC Adapter Model EU-30

UL1950

CSA C22.2 No.950

EN60950

AS/NZS3260

Index

A

AppleTalk, 5-1, 5-5, 5-7
AppleTalk zone, 5-5, 5-7
arp, 3-12, 3-15

B

Bindery Emulation, 4-1
BOOTP, 3-11, 3-17

C

Cable connection types
 10BASE-2, 1-5
 10BASE-T, 1-5
 100BASE-TX, 1-5
Category, 10-1
Coaxial Y-connector, 2
Configuration button, 10-2, 10-12
Connecting network cable, 1-5

D

Device name, 6-7, 7-11
DHCP, 3-11, 3-17, 6-5, 7-10
Dial-up network, 4-40

E

Entity type, 5-4, 5-7
EPSON Namer, 5-2
EPSON Net!2
 dialog box, 10-1, 10-11
 for Intranet, 3-16, 4-37, 5-6, 6-5,
 7-10, 10-14
 for Macintosh, 3-9, 5-3, 10-11
 for Windows, 3-9, 4-8, 4-14, 4-24,
 4-33, 10-1
EPSON Status Monitor 2, 6, 11-1
Error status, 1-2
Ethernet card hardware installation,
 1-4

F

Frame type, 4-9, 4-16, 4-25, 4-35
ftp, 9-8

G

Gateway, 3-11, 3-17

I

IEEE 802.2 protocol, 1
Initialization, 1-5, 1-7
Installation
 EPSON Net!2, 2-1, 2-4
 EPSON Status Monitor 2, 11-2
Interface slot, 1-4
Internet Explorer, 2, 5
IntranetWare, 4-1
IP address, 3-1
IP address acquisition, 3-11, 3-17

L

Launch Browser button, 10-2, 10-11
LEDs, 1-1
Link select light, 1-2
LPR port, 3-1, 7-3, 7-6

M

MAC address, 10-6, 10-14

N

NDS, 4-18, 4-25, 4-35, 4-38
NDS
 context, 4-25, 4-35, 4-38
 tree name, 4-25, 4-35, 4-38
NetBEUI, 6-3, 6-5, 7-8, 7-10, 8-5
NetBIOS name, 6-7, 7-11

NetWare

3.1x, 4-4

4.1x, 4-18

Basic, 4-9, 4-16, 4-25, 4-35, 4-37

effective hops, 10-3

Network number, 5-5, 5-7

Network number set, 5-5, 5-7

Nwadmin, 4-19, 4-27

O

Operating environment, 4

Option, 10-3, 10-11

Optional screen, 10-18

P

Password, 4-26, 4-39, 10-15, 10-19

PCONSOLE, 4-4, 4-11

ping, 3-13-14

Polling interval, 4-10, 4-26, 4-38

Power select switch, 1-3

Primary file server, 4-10, 4-26, 4-38

Primary print server, 4-17, 4-36, 4-39

Print Server mode, 4-2, 4-4, 4-19, 4-38

Print Server name, 4-10, 4-26, 4-38

Printer, 10

Printer model, 10-6

Printer port number, 4-17, 4-36, 4-39

Protocols, 4

Q

Queue Settings, 4-39, 10-4

R

RARP, 3-11, 3-17

Remote Printer mode, 4-3, 4-11, 4-27,

4-38

Reset, 10-15, 10-18

Return to Default button, 10-6,

10-13, 10-18

Router, 3-11

S

Setting the IP address, 3-9, 3-12

Spool directory, 7-6

Starting browser, 3-16, 4-37, 5-6, 6-5,
7-10

Status

lights, 1-1

sheet, 1-2

sheet button, 1-2

Subnet

mask, 3-11, 3-17

Settings, 3-12, 10-4

T

TCP/IP, 3-1, 6-3, 7-3, 8-2

Time-out time, 10-3, 10-11

U

Uninstall EPSON Net!2, A-1-2

UNIX, configure for different OS,
9-2-7

Update Home Page, 10-20

Using the Ethernet card with

Macintosh, 5-1

NetWare, 4-1

OS/2, 8-1

UNIX, 9-1

Windows 95, 6-1

Windows NT, 7-1

W

Workgroup name, 6-7, 7-11

Y

Y-Connector, 2

Z

Zone, 5-5, 5-7

EPSON OVERSEAS MARKETING LOCATIONS

EPSON AMERICA, INC.

20770 Madrona Ave.
P.O. Box 2842
Torrance, CA 90509-2842
Phone: (800) 922-8911
Fax: (310) 782-5220

EPSON UK LTD.

Campus 100, Maylands Avenue,
Hemel Hempstead, Herts,
HP2 7TJ, U.K.
Phone: (+44) 01442 261144
Fax: (+44) 01442 227227

EPSON DEUTSCHLAND GmbH

Zülpicher Straße 6,
40549 Düsseldorf Germany
Phone: (0211) 56030
Fax: (0211) 5047787

EPSON FRANCE S.A.

68 bis, rue Marjolin
92300, Levallois-Perret, France
Phone: 33.1.40.87.37.37
Telex: 610657

EPSON AUSTRALIA PTY. LTD.

70 GIBBES STREET, CHATSWOOD 2067 NSW.
Phone: 2-9903-9000
Fax: 2-9903-9177

EPSON SINGAPORE PTE. LTD.

No. 1 Temasek Avenue #36-00
Millenia Tower, Singapore 039192
Phone: (065) 33 77 911
Fax: (065) 33 41 185

EPSON HONG KONG LTD.

Rooms 4706-10, 47/F,
China Resources Bldg.,
26 Harbour Road, Wanchai, Hong Kong
Phone: 2585-4300
Fax: 2827-7083

EPSON TAIWAN TECHNOLOGY & TRADING LTD.

10F, No. 287 Nanking E. Road, Sec. 3,
Taipei, Taiwan, R.O.C.
Phone: (02) 717-7360
Fax: (02) 712-9164

EPSON ITALIA S.p.A.

V.le F.lli Casiraghi 427
20099 Sesto S.Giovanni
MI, Italy
Phone: 2-262331
Fax: 2-2440750

EPSON IBERICA S.A.

Av. de Roma, 18-26
08290 Cerdanyola del Valles
Barcelona, Spain
Phone: 582. 15.00
Fax: 582. 15.55

**SEIKO EPSON CORPORATION
(Hirooka Office)**

80 Harashinden, Hirooka
Shiojiri-shi, Nagano-ken
399-0785 Japan

EPSON PORTUGAL, S.A.

R. do Progresso, 471, 1º Perafita
4460 Matosinhos, Portugal
Phone: (02) 996 14 02
Fax: (02) 996 14 11

EPSON

Type B Ethernet Interface Card

C82362*/C82363*/C82364*

Administrator's Manual

