
Contents

Introduction

About Your Network Interface	8
About This Guide	8
Package Contents	9
Operating Environment	10
Supported operating systems	10
Printing environments	11
Supported Epson Devices	13
Features of the Network Interface	14
Network Interface Operation	15
Terms and Concepts	18

Installing Components and Setting Up the Network Interface

Overview	19
----------------	----

Selecting a Printing Method

Printing from Windows	21
Printing from Macintosh	22
Features of the Printing Methods	22
LPR (TCP/IP) printing	22
Internet printing	23
Microsoft Network Shared printing	24

Installing Components on Your Computer

About Installing Components on Your Computer	25
Windows XP	25
Windows Me/98/95	28
Windows 2000	31

Windows Server 2003	34
Windows NT 4.0	37
Macintosh	40
Mac OS X	40
Mac OS 9	40

How to Set UP the Network Interface

Installing the Network Interface on the Device	42
Configuring the network interface for Windows	45
Configuring the network interface for Macintosh	50
Setting up the printer	55

Installing the Printer Driver

About Installing the Printer Driver	57
Windows XP	57
LPR printing	57
Internet printing	60
Microsoft Network Shared printing	61
Using the NET USE command	63
Windows Me/98/95	64
LPR printing	64
Internet printing (Windows 98/95)	64
Internet printing (Windows Me)	64
Microsoft Network Shared printing	65
Using the NET USE command	67
Windows 2000	68
LPR printing	68
Internet printing	71
Microsoft Network Shared printing	71
Using the NET USE command	73
Windows Server 2003	74
LPR printing	74
Internet printing	77
Microsoft Network Shared printing	78
Using the NET USE command	80

Windows NT 4.0	81
LPR printing	81
Internet printing	82
Microsoft Network Shared printing	82
Using the NET USE command	84
Macintosh	85
Mac OS X	85
Mac OS 9	86

Network Software

About the Software

Overview	87
----------------	----

EpsonNet Config for Windows

About EpsonNet Config for Windows	89
System Requirements	90
Installing EpsonNet Config for Windows	90
Accessing the EpsonNet Config for Windows User's Guide	91

EpsonNet Config for Macintosh

About EpsonNet Config for Macintosh	93
System Requirements	93
Installing EpsonNet Config for Macintosh	93
Accessing the EpsonNet Config for Macintosh User's Guide ...	94

EpsonNet Config with Web Browser

About EpsonNet Config with Web Browser	96
Supported Web browser	96
About Web browser setting	96

Configuring the Network Interface Using EpsonNet Config with Web Browser	97
Opening Screen.....	102
Index Frame.....	102
Menu Frame	103
Information Frame	104
General	105
Configuration - Network Screens	106
Configuration - Optional Screens	115

EpsonNet Print

About EpsonNet Print	118
System Requirements	118
Installing EpsonNet Print	119
For Windows XP/2000/Server 2003/NT 4.0 Users	120
Adding a port for a device assigned with a dynamic IP address.....	120
Adding a port for a device assigned with a static IP address.....	125
Installing the Printer Driver.....	128
For Windows Me/98/95 Users	129
Adding a port for a device assigned with a dynamic IP address.....	129
Adding a port for a device assigned with a static IP address.....	133
Configuring the Printer Port.....	135

EpsonNet Internet Print

About EpsonNet Internet Print	138
System Requirements	139
Installing EpsonNet Internet Print.....	139
Setting Up Your Device Using EpsonNet Internet Print	140
Windows 98/95	140
Windows NT 4.0	145
Status Alert Window	148

EpsonNet WebManager

About EpsonNet WebManager	149
System Requirements	149
EpsonNet WebManager Functions	151
EpsonNet WebManager Operating Structure	152
Installing EpsonNet WebManager	154
Starting EpsonNet WebManager	154
Opening the Online Guide	156

EpsonNet SetupManager

About EpsonNet SetupManager	157
System Requirements	158
Installing EpsonNet SetupManager	160
Accessing the User's Guide for EpsonNet SetupManager	160

Tips for Administrator

Settings for NetWare Users

Introduction to NetWare Settings	162
Supported systems	162
About modes	163
Instructions for Using NetWare	164
Using Bindery Print Server (NetWare 3.x/4.x)	166
Using NDS Print Server (NetWare 4.x/5.x/6.0)	166
Using Remote Printer Mode (NetWare 3.x)	167
Using Bindery Remote Printer Mode (NetWare 4.x)	171
Using NDS Remote Printer Mode (NetWare 4.x/5.x/6.0)	174
Using the NDPS Gateway	179
Outline of settings	180
Making printer environment	180
Creating an NDPS Manager	181
Creating a Printer Agent	182
Configuring for NetWare using EpsonNet Config	184

Setting the printer on client workstations	185
Instructions for Using a Dial-Up Network	186
Using a dial-up network in each mode	186
When there is a primary server at the dial-up destination	187
When there is a primary server in the local network.	189

Settings for UNIX Users

Introduction to UNIX Settings	191
lpr filters.	191
Setting Up Different UNIX Systems Using the lpr Command	192
Setting up for SunSoft Solaris 2.4 or later	193
Setting up for SunOS 4.1.4 or later	194
Setting up for IBM AIX 3.2.5 or later and 4.1.3 or later	195
Setting up for HP-UX 9.05 or later	196
Setting up for SCO UNIX 4.2 or later (Open Server)	197
Using the ftp Command	198

Tips

Instructions on Using DHCP	200
Setting an IP Address Using the arp/ping Command	201
Checking the LAN.	201
Setting and checking the new IP address	202
Instructions on Using a Dial-Up Router	203
Function of Universal Plug and Play.	204
Uninstalling Software	205
Windows XP/Server 2003	205
Windows Me/98/95/2000/NT 4.0.	205
Macintosh	206

Problem Solver

General Problems207
Problems Specific to Your Network Environment211
 Windows Me/98/95 environment211
 Windows XP/2000/NT environment212
 Macintosh environment213
 NetWare environment213
Initializing the Network Interface215
Restrictions on EPSON Status Monitor 3215
 For the laser printer215

Specifications

Network Interface Specification217
Electrical Specifications217
Regulatory Approvals218
Reliability218
Environmental218
FCC Compliance Statement for United States Users219
 WARNING220
 For Canadian Users220
DECLARATION of CONFORMITY220
Index222

Introduction

About Your Network Interface

The EpsonNet 10/100 Base Tx Int. Print Server 5 is a network interface that plugs into an optional interface slot of an Epson device to enable the device to connect directly to your network.

Because the network interface supports multiple protocols and automatically detects protocols on your network, you can print from Microsoft® Windows®, Apple® Macintosh®, UNIX®, and IBM® OS/2 applications.

Use EpsonNet Config or EpsonNet Config with Web Browser, the configuration utilities provided with your product, to quickly and easily configure the network interface to use protocols such as TCP/IP, NetWare, NetBEUI, IPX/SPX, AppleTalk®, IPP, and SNMP.

Note:

The EpsonNet Config utility configures the network interface to work only with protocols that exist on your network. This does not imply that you can use all of the above-mentioned protocols on your network or operating system. The protocols that the network interface can use may vary depending on the operating system and the network configuration.

About This Guide

This *User's Guide* contains information about using the network interface on a network. It includes how to set up the network interface, install the configuration software, and modify network settings of your device and computer.

For information about your device, see the manual shipped with the device.

Note:

- ❑ *This guide is written for network administrators, and many of the steps included here require detailed network knowledge and administrator rights.*
- ❑ *The term “network administrator” refers to the person responsible for maintaining the network. “Administrator” is synonymous with “Supervisor” in this guide.*
- ❑ *The term “network interface” refers to the EpsonNet 10/100 Base Tx Int. Print Server 5 in this guide.*
- ❑ *The term “device” refers to the printer or all-in-one that is supported by the network interface.*
- ❑ *Some screen shots in this guide may list a device name other than your device. This difference does not alter the instructions.*

Package Contents

Your network interface package includes the following items.

- ❑ Network interface (The utility EpsonNet Config with Web Browser is pre-installed on this network interface.)
- ❑ Software CD-ROM containing:
 - User’s Guide (HTML-format manual)
 - EpsonNet Config (for Windows)
 - EpsonNet Config (for Macintosh)
 - EpsonNet WebManager
 - EpsonNet Print
 - EpsonNet SetupManager
 - EpsonNet EasyInstall (Win/Mac)
 - EpsonNet Internet Print (Win)

- ❑ Online Guide Supplement Sheet

Note:

- ❑ *To read the online guide, you must have Microsoft Internet Explorer 4.0 (or later) or Netscape Navigator 4.0 (or later) installed on your computer.*
- ❑ *You need to supply items such as a computer with an Ethernet network interface, an Epson device with an optional interface slot, and an Ethernet cable (Category 5 shielded twisted-pair cable).*

Operating Environment

Supported operating systems

The network interface supports the following operating systems.

Supported operating systems	Windows XP Windows Me Windows 98 Second Edition Windows 95 OSR2 Windows 2000 Windows Server 2003 Windows NT 4.0 (with Service Pack 6 or higher) Mac OS X 10.2 or later Mac OS 9.1 or later
-----------------------------	--

Printing environments

The network interface receives print jobs in the following environments.

Operating systems	Version	Protocol
Windows XP (Home, Professional)	-	TCP/IP (using LPR, Standard TCP/IP Port, or EpsonNet Print)
		IPP
Windows Me	-	TCP/IP (using EpsonNet Print)
		IPP
		NetBEUI
Windows 98/95	-	TCP/IP (using EpsonNet Print)
		IPP (using EpsonNet Internet Print)
		NetBEUI
Windows 2000 (Professional, Server)	-	TCP/IP (using LPR, Standard TCP/IP Port, or EpsonNet Print)
		IPP
		NetBEUI
Windows Server 2003	-	TCP/IP (using LPR, Standard TCP/IP Port, or EpsonNet Print)
		IPP
WindowsNT 4.0 with Service Pack 5 or higher	-	TCP/IP (using LPR or EpsonNet Print)
		IPP (using EpsonNet Internet Print)
		NetBEUI

Operating systems	Version	Protocol
Macintosh	Mac OS X 10.2.4 or later	AppleTalk TCP/IP Rendezvous
	Mac OS X 10.2 or later	AppleTalk TCP/IP
	Mac 9.1 or later	AppleTalk
NetWare	3.x	Bindery mode
	4.x/IntranetWare	NDS mode Bindery emulation mode
	5.x/6.0	NDS Queue-based print system NDPS
OS/2 (OS/2 Warp Connect, OS/2 Warp Server)	V3 V4	TCP/IP (lprportd) NetBEUI
UNIX	Sun OS 4.1.4 or later: SPARC	lpr, ftp
	SunSoft Solaris 2.4 or later: SPARC and x86 SCO UNIX 4.2 or later	
	SCO UnixWare 2.01 or later	
	HP/UX 9.05 or later	
	IBM AIX 3.2.5 or later and 4.1.3 or later	

Note:

- ❑ *Only the Intel version of Windows NT is supported.*
- ❑ *The multi-user environment of Mac OS 9 is not supported.*

- ❑ *If you use the device in a dial-up router environment, you must set an IP address for the device. Make sure the IP address is suitable for the segment; incorrect IP address may generate unexpected dial-up.*
- ❑ *See the manual shipped with your device for information on the supported operating system of the device.*

Supported Epson Devices

The network interface can be installed for the following Epson devices (as of March, 2005).

- ❑ **Ink Jet Printer:**
 - EPSON Stylus Pro10600
 - EPSON Stylus Pro 4000
 - EPSON Stylus Pro 4400/4800
 - EPSON Stylus Pro 7600
 - EPSON Stylus Pro 9600

- ❑ **Laser Printer:**
 - EPL-N2500
 - EPL-N7000
 - EPL-N3000
 - EPL-6200
 - EPSON AcuLaser 2600
 - EPSON AcuLaser C7000
 - EPSON AcuLaser C8600
 - EPSON AcuLaser C9100
 - EPSON AcuLaser C4100
 - EPSON AcuLaser C1900
 - EPSON AcuLaser C900
 - EPSON AcuLaser C2600
 - EPSON AcuLaser C4200

❑ **Impact Dot Matrix Printer:**

DFX-9000

DFX-5000+

FX-2190/890

LQ-2180

LQ-2090/590

LQ-680/680pro

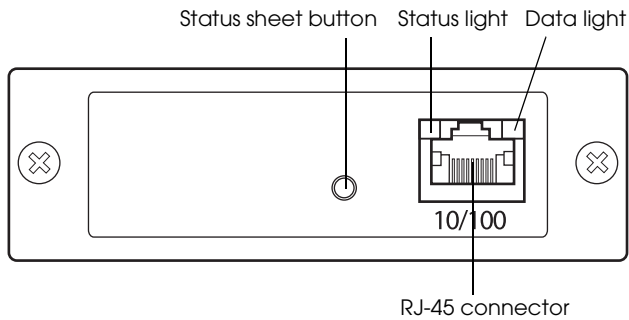
DLQ-3500

Features of the Network Interface

- ❑ Provides high performance.
- ❑ Connects an Epson device equipped with an optional interface slot to the network.
- ❑ Supports multiple protocols, such as TCP/IP, NetWare, NetBEUI, IPX/SPX, AppleTalk, and IPP.
- ❑ Supports 100Base full duplex, 100Base half duplex, 10Base full duplex, and 10Base half duplex.
- ❑ Supports DHCP.
- ❑ Supports Automatic Private IP Addressing (APIPA) that assigns an IP address automatically to the network interface even if there is no DHCP server on the network.
- ❑ Supports the Dynamic DNS function.
- ❑ Supports SNMP and MIB.
- ❑ Support Rendezvous on Mac OS X 10.2.4 or higher.

Network Interface Operation

The status lights and status sheet provide you with important information about the operation and configuration of the network interface.



- a. Status sheet button
- b. Status light
- c. Data light
- d. RJ-45 connector

Status and Data lights

The network interface has two lights (Status and Data), which indicate the current operating status of the network interface when you first turn on the device, during normal operation, and when errors occur. The status light has two colors (green and orange). The data light is green.

The status lights indicate the network interface status, as follows:

Status light	Data light	Network interface status
Off	Off	Initializing
Orange flash repeated once	On	Control error (Inappropriate command)
Orange flash repeated twice	On	External bus error, data storage error, or instruction storage error
Orange flash repeated three times	On	Alignment error
Orange flash repeated four times	On	Program error (Division by zero)
Orange flash repeated five times	On	Flash-Rom illegal access error
Orange status light and green data light flashing alternately		Firmware update mode
Green	On	Ready (10M link)
Green	Flashing	Receiving packets (10M link)
Green	Off	No communication is available (10M link).
Orange	On	Ready (100M link)
Orange	Flashing	Receiving packets (100M link)
Orange	Off	No communication is available (100M link).

Status sheet button

The first time you use the network interface after installing or reinstalling it, turn on the device. Then, while both the status light and the data light are off, hold down the status sheet button for about twenty seconds to initialize the network interface. The length of time needed to hold down the status sheet button varies depending on the device model.

Before you start configuring the network interface, be sure to press and hold down the status sheet button on the network interface to print a status sheet. A status sheet provides important information about the network interface, such as MAC address, device settings, and the device's current status. Press the status sheet button once to print a simple status sheet, or twice to print a full status sheet. You cannot print a status sheet when the device has already started printing, or when it is offline or not ready to print.

Note:

If the device does not print a status sheet, make sure the device is online and no print jobs are being processed, and then wait a minute. If it still does not print a status sheet, turn the device off, wait until the status lights go out, and then turn it back on again. The status sheet can be printed one minute after the device finishes warming up.



Caution:

After turning off the device, wait until the status lights go out before turning the device back on; otherwise, the network interface may not work correctly.

RJ-45 connector

This connector is used to connect an Ethernet cable to the network. You can use this cable for both 10Base-T and 100Base-TX.



Caution:

You must use a Category 5 shielded twisted-pair cable to connect the network interface to prevent malfunction.

Terms and Concepts

Configuration -- a prepared set of conditions for proper operation of a device. Configuring the network interface is to prepare it to work with protocols available on a network.

DHCP -- a dynamic host configuration protocol. It is a protocol that assigns dynamic IP addresses to devices on a network.

EtherTalk -- the communication protocol of AppleTalk governing Ethernet transmissions

ftp -- a TCP/IP application protocol for file transfer

lpd -- a TCP/IP remote printing protocol application

Print queue -- a location where a print job is stored as a file, until the network interface sends the job to the assigned device

Protocol -- a rule that controls how data or information is exchanged through a network. Computers and software cannot communicate with each other using different protocols.

Remote printer -- a shared device connected elsewhere on the network, but under the control of a NetWare network interface

TCP/IP -- Transmission Control Protocol/Internet Protocol, a layer of protocols that provides communications between nodes on a network

Installing Components and Setting Up the Network Interface

Overview

This section describes the general procedure on how to set up the network interface for use on a network.

1. Check the network interface operation.

Check the functions and operations of the network interface, such as status lights, status sheet button, and the RJ-45 connector. See “Network Interface Operation” for details.

2. Select a printing method.

Select a printing method appropriate for your network environment and operating system. If you are not sure, see “Printing from Windows” or “Printing from Macintosh” for details.

3. Install the necessary components on the computer.

Make sure the necessary components (such as TCP/IP, NetBEUI, etc.) are installed on the computer, and network settings (such as the IP address, subnet mask, etc.) of the computer are set. See “About Installing Components on Your Computer” for details.

4. If necessary, install the printer driver.

Install the printer driver from the CD-ROM that comes with the device. See “About Installing the Printer Driver” for details.

5. Install the network interface on the device.

Install the network interface and initialize it. See “Installing the Network Interface on the Device”.

6. Insert the Software CD-ROM in the CD-ROM drive to configure the network interface

Connect the network interface to the network. For Windows users, see “Configuring the network interface for Windows” for details. For Macintosh users, see “Configuring the network interface for Macintosh” for details.

7. If necessary, modify the network settings of the network interface using EpsonNet Config.

Modify the network interface for TCP/IP, AppleTalk, MS Network, etc. using EpsonNet Config. For Windows users, see “About EpsonNet Config for Windows” for details. For Macintosh users, see “About EpsonNet Config for Macintosh”.

Selecting a Printing Method

Printing from Windows

Check if there is a Windows XP/2000/Server 2003/NT print server on your network, and then use the suggestions below.

Note:

Only the recommended printing methods are introduced here. See “Features of the Printing Methods” for information on additional methods.

If no Windows XP/2000/Server 2003/NT print server exists

Use a printing method appropriate to your operating system:

- ❑ For Windows Me/98/95
We recommend TCP/IP printing via EpsonNet Print. See “About EpsonNet Print”.
- ❑ For Windows XP/2000/Server 2003/NT
We recommend TCP/IP printing via LPR. See “Windows XP”, “Windows 2000”, “Windows Server 2003”, or “Windows NT 4.0”.

If a Windows XP/2000/Server 2003/NT print server exists

On the server, set the printer to connect with LPR and turn it into a shared printer. Your clients can then print to this shared printer.

Printing from Macintosh

Mac OS X 10.2.4 or later

- Rendezvous
- EPSON TCP/IP
- EPSON AppleTalk

Mac OS X 10.2 or later

- EPSON TCP/IP
- EPSON AppleTalk

Mac OS 9

- AppleTalk

Features of the Printing Methods

This section describes features of the printing methods available for you to choose.

LPR (TCP/IP) printing

Advantages

- No computer as a network interface is required.
- No special utility for Windows XP/2000/Server 2003/NT is required.

- ❑ You can see the device status using EPSON Status Monitor 2 or 3.
- ❑ For Windows XP/2000/Server 2003/NT, you can create a print log using the event viewer.
- ❑ You can print via a router.

Disadvantages

- ❑ You need to set up TCP/IP.
- ❑ For Windows Me/98/95, EpsonNet Print must be installed on all computers to use for printing.

Internet printing

Advantages

- ❑ No proxy server (computer) is required.
- ❑ You can print to the device over the Internet.

Disadvantages

- ❑ EPSON Status Monitor 2 or 3 cannot be used.
- ❑ TCP/IP and DNS settings are required.
- ❑ For Windows Me/98/95, EpsonNet Internet Print must be installed on all computers used for printing.
- ❑ For Windows XP/2000/Server 2003, you cannot share the Internet printer.

Microsoft Network Shared printing

Advantages

- ❑ Easy to set up (IP address is not required if NetBEUI protocol is installed).
- ❑ No computer as a network interface is required.
- ❑ No special print utility is required.

Disadvantages

- ❑ EPSON Status Monitor 2 or 3 cannot be used.
- ❑ You cannot print via a router.
- ❑ It takes a longer time to start printing because more time is required to search for a network device.

Installing Components on Your Computer

About Installing Components on Your Computer

Before configuring the network interface and printing from the computer, you need to install the necessary components (such as TCP/IP, NetBEUI, etc.) and assign an IP address and subnet mask for your computer, depending on the printing method you want to use. See the section appropriate for your operating system.

“Windows XP”

“Windows Me/98/95”

“Windows 2000”

“Windows Server 2003”

“Windows NT 4.0”

“Macintosh”

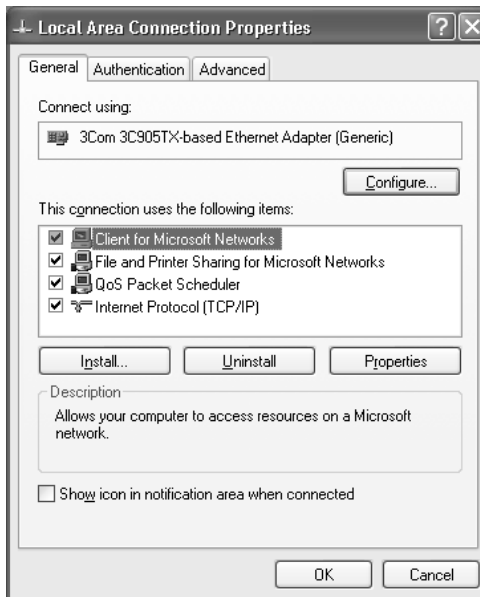
Windows XP

For Windows XP, use the following procedure to install the necessary components.

Note:

- ❑ *The Windows XP CD-ROM may be required during the installation.*

- ❑ *When using TCP/IP or IPP for printing, you need to set the IP address, the subnet mask, and the default gateway of the computer.*
1. Click Start, highlight Control Panel, and then click Network and Internet Connections. Select Network Connections.
 2. Under LAN or High-Speed Internet, click the Local Area Connection icon.
 3. Under Network Tasks, click Change settings of this connection.
 4. Check if the following necessary components are in the list. If they are already installed, see “How to Set Up the Network Interface.”



The following table lists the components required for configuring the network interface with EpsonNet Config. For information on EpsonNet Config, see “About EpsonNet Config for Windows”.

EpsonNet Config’s setting screens	Necessary components
TCP/IP, AppleTalk, IPP, SNMP (IP trap)	Internet Protocol (TCP/IP)
MS Network	Internet Protocol (TCP/IP)
NetWare, SNMP (IPX trap)	Latest Novell Client downloaded from the Novell Web site

The following table lists the components required for network printing.

Printing method	Necessary components
LPR or Internet printing	Internet Protocol (TCP/IP)
Microsoft Network Shared printing	Internet Protocol (TCP/IP) Client for Microsoft Networks
Printing via NetWare server	Latest Novell Client downloaded from the Novell Web site

5. If the necessary components are not in the list, click Install to install them, as described below.

For LPR or Internet printing:

Internet Protocol (TCP/IP) is installed by default. You cannot add or delete it.

For Microsoft Network Shared printing:

Select Client and then click Add. Select Client for Microsoft Networks and then click OK.

For printing via NetWare server:

Download the latest Novell Client from the Novell Web site and install it on the computer. Also, be sure to install IPX. See the Novell Web site for detailed information.

6. **For LPR, Internet, or Microsoft Network Shared printing:** Double-click Internet Protocol (TCP/IP) on the Local Area Connection Properties dialog box to open the Internet Protocols (TCP/IP) Properties dialog box. Set the IP address, the subnet mask, etc. and then click OK.
7. Restart the computer.

The necessary components are now installed.

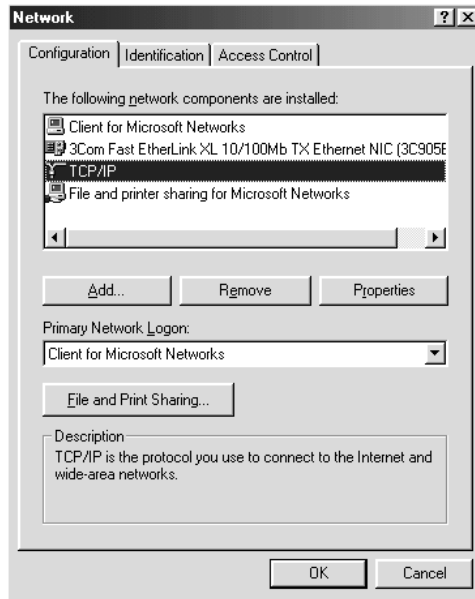
Windows Me/98/95

For Windows Me/98/95, use the following procedure to install the necessary components.

Note:

- The Windows Me/98/95 CD-ROM may be required during the installation.*
 - When using TCP/IP or IPP for printing, you need to set the IP address, the subnet mask, and the default gateway of the computer.*
1. Click Start, point to Settings, and then select Control Panel.

2. Double-click the Network icon. Check if the following necessary components are in the list of installed network components on the Configuration menu. If they are already installed, see “How to Set Up the Network Interface.”



The following table lists the components required for configuring the network interface with EpsonNet Config. For information on EpsonNet Config, see “About EpsonNet Config for Windows”.

EpsonNet Config's setting screens	Necessary components
TCP/IP, AppleTalk, IPP, SNMP (IP trap)	TCP/IP
MS Network	NetBEUI or TCP/IP
NetWare, SNMP (IPX trap)	Latest Novell Client downloaded from the Novell Web site

Note:

Do not use Novell Client for Windows 95/98 version 3.00 and Novell Client for Windows NT version 4.50 when using the following modes: NetWare 3.x/4.x Bindery Print Server mode, NetWare 3.x Remote Printer mode, NetWare 4.x Bindery Remote Printer mode, and NetWare 4.x/5.x NDS Remote Printer mode.

The following table lists the components required for network printing.

Printing method	Necessary components
LPR or Internet printing	TCP/IP
Microsoft Network Shared printing	TCP/IP or NetBEUI Client for Microsoft Networks
Printing via NetWare server	Latest Novell Client downloaded from the Novell Web site

3. If the necessary components are not in the list, click Add to install them, as described below.

For LPR or Internet printing:

Select Protocol and then click Add. Select Microsoft from the Manufacturers list and TCP/IP from the Network Protocols list. Then click OK.

For Microsoft Network Shared printing:

To use TCP/IP, see the description described earlier to install TCP/IP.

To use NetBEUI, select Protocol and then click Add. Select Microsoft from the Manufacturers list and NetBEUI from the Network Protocols list. Then click OK.

Select Client and then click Add. Select Microsoft from the Manufacturers list and Client for Microsoft Networks from the Network Clients list. Then click OK.

For printing via NetWare server:

Download the latest Novell Client from the Novell Web site and install it on the computer. Also, be sure to install IPX. See the Novell Web site for detailed information.

4. **For LPR, Internet, Microsoft Network Shared printing:**

Double-click TCP/IP on the Configuration menu to open the TCP/IP Properties dialog box. Set the IP address, the subnet mask, etc. and then click OK.

5. Restart the computer.

The necessary components are now installed.

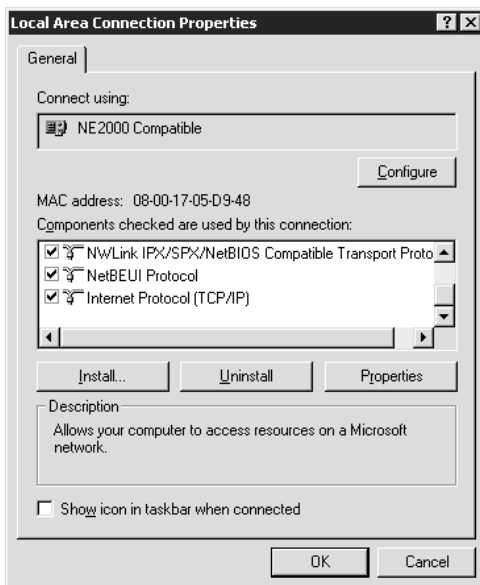
Windows 2000

For Windows 2000, use the following procedure to install the necessary components.

Note:

- ❑ *The Windows 2000 CD-ROM may be required during the installation.*
 - ❑ *When using TCP/IP or IPP for printing, you need to set the IP address, the subnet mask, and the default gateway of the computer.*
1. Click Start, point to Settings, and then select Network and Dial-up Connections. The Network and Dial-up Connections screen appears.
 2. Right-click the desired network connection and then select Properties.

3. Check if the following necessary components are in the list. If they are already installed, see “How to Set Up the Network Interface.”



The following table lists the components required for configuring the network interface with EpsonNet Config. For information on EpsonNet Config, see “About EpsonNet Config for Windows”.

EpsonNet Config's setting screens	Necessary components
TCP/IP, AppleTalk, IPP, SNMP (IP trap)	Internet Protocol (TCP/IP)
MS Network	NetBEUI or Internet Protocol (TCP/IP)
NetWare, SNMP (IPX trap)	Latest Novell Client downloaded from the Novell Web site

Note:

Do not use Novell Client for Windows 95/98 version 3.00 and Novell Client for Windows NT version 4.50 when using the following modes: NetWare 3.x/4.x Bindery Print Server mode, NetWare 3.x Remote Printer mode, NetWare 4.x Bindery Remote Printer mode, and NetWare 4.x/5.x NDS Remote Printer mode.

The following table lists the components required for network printing.

Printing method	Necessary components
LPR or Internet printing	Internet Protocol (TCP/IP)
Microsoft Network Shared printing	Internet Protocol (TCP/IP) or NetBEUI Client for Microsoft Networks
Printing via NetWare server	Latest Novell Client downloaded from the Novell Web site

4. If the necessary components are not in the list, click Install to install them, as described below.

For LPR or Internet printing:

Select Protocol and then click Add. In the Select Network Protocol dialog box, select Internet Protocol (TCP/IP) and then click OK.

For Microsoft Network Shared printing:

To use Internet Protocol, see the description described earlier to install Internet Protocol (TCP/IP).

To use NetBEUI, select Protocol and then click Add. Select NetBEUI Protocol and then click OK.

Select Client and then click Add. Select Client for Microsoft Networks and then click OK.

For printing via NetWare server:

Download the latest Novell Client from the Novell Web site and install it on the computer. Also, be sure to install IPX. See the Novell Web site for detailed information.

5. **For LPR, Internet, or Microsoft Network Shared printing:**
Double-click Internet Protocol (TCP/IP) on the Configuration menu to open the TCP/IP Properties dialog box. Set the IP address, the subnet mask, etc. and then click OK.
6. Restart the computer.

The necessary components are now installed.

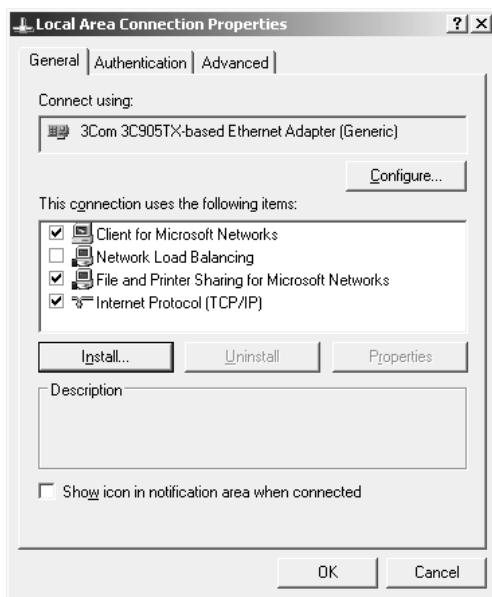
Windows Server 2003

For Windows Server 2003, use the following procedure to install the necessary components.

Note:

- ❑ *The Windows Server 2003 CD-ROM may be required during the installation.*
 - ❑ *When using TCP/IP or IPP for printing, you need to set the IP address, the subnet mask, and the default gateway of the computer.*
1. Click Start, point to Control Panel, and then select Network Connections. Click Local Area Connections.
 2. Click the Properties button.

3. Check if the following necessary components are in the list. If they are already installed, see “How to Set Up the Network Interface.”



The following table lists the components required for configuring the network interface with EpsonNet Config. For information on EpsonNet Config, see “About EpsonNet Config for Windows”.

EpsonNet Config’s setting screens	Necessary components
TCP/IP, AppleTalk, IPP, SNMP (IP trap)	Internet Protocol (TCP/IP)
MS Network	Internet Protocol (TCP/IP)
NetWare, SNMP (IPX trap)	Latest Novell Client downloaded from the Novell Web site

The following table lists the components required for network printing.

Printing method	Necessary components
LPR or Internet printing	Internet Protocol (TCP/IP)
Microsoft Network Shared printing	Internet Protocol (TCP/IP) Client for Microsoft Networks
Printing via NetWare server	Latest Novell Client downloaded from the Novell Web site

4. If the necessary components are not in the list, click Install to install them, as described below.

For LPR or Internet printing:

Internet Protocol (TCP/IP) is installed by default. You cannot add or delete it.

For Microsoft Network Shared printing:

Select Client and then click Add. Select Client for Microsoft Networks and then click OK.

For printing via NetWare server:

Download the latest Novell Client from the Novell Web site and install it on the computer. Also, be sure to install IPX. See the Novell Web site for detailed information.

5. **For LPR, Internet, or Microsoft Network Shared printing:** Double-click Internet Protocol (TCP/IP) in the Local Area Connection Properties dialog box to open the Internet Protocols (TCP/IP) Properties dialog box. Set the IP address, the subnet mask, etc. and then click OK.
6. Restart the computer.

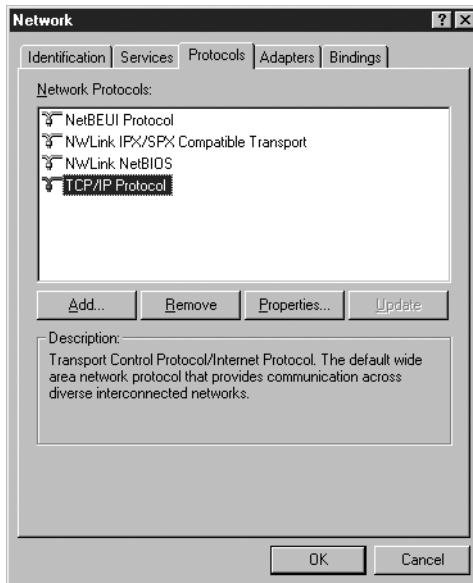
The necessary components are now installed.

Windows NT 4.0

For Windows NT 4.0, use the following procedure to install the necessary components.

Note:

- ❑ *The Windows NT 4.0 CD-ROM may be required during the installation.*
 - ❑ *When using TCP/IP or IPP for printing, you need to set the IP address, the subnet mask, and the default gateway of the computer.*
1. Click Start, point to Settings, and then select Control Panel.
 2. Double-click the Network icon in the Control Panel, and then select the Protocols tab from the Network dialog box.
 3. Check if the following necessary components are in the list. If they are already installed, see “How to Set Up the Network Interface.”



The following table lists the components required for configuring the network interface with EpsonNet Config. For information on EpsonNet Config, see “About EpsonNet Config for Windows”.

EpsonNet Config's setting screens	Necessary components
TCP/IP, AppleTalk, IPP, SNMP (IP trap)	TCP/IP
MS Network	NetBEUI or TCP/IP
NetWare, SNMP (IPX trap)	Latest Novell Client downloaded from the Novell Web site

Note:

Do not use Novell Client for Windows 95/98 version 3.00 and Novell Client for Windows NT version 4.50 when using the following modes: NetWare 3.x/4.x Bindery Print Server mode, NetWare 3.x Remote Printer mode, NetWare 4.x Bindery Remote Printer mode, and NetWare 4.x/5.x NDS Remote Printer mode.

The following table lists the components required for network printing.

Printing method	Necessary components
LPR or Internet printing	Protocols menu: TCP/IP Services menu: Microsoft TCP/IP Printing
Microsoft Network Shared printing	Protocols menu: TCP/IP or NetBEUI Services menu: Workstation
Printing via NetWare server	Latest Novell Client downloaded from the Novell Web site

4. If the necessary components are not in the list, click Add to install them, as described below.

For LPR or Internet printing:

Select the Protocols tab and then click Add. Select TCP/IP Protocol from the list and then click OK. Set the IP address, the subnet mask, etc. and then click OK.

Select the Services tab and then click Add. Select Microsoft TCP/IP Printing from the list and then click OK.

For Microsoft Network Shared printing:

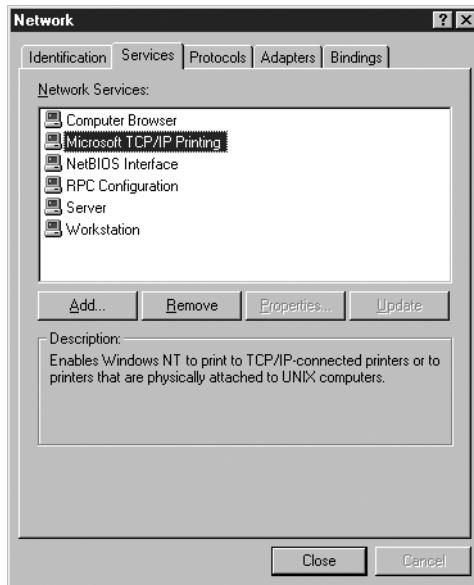
To use TCP/IP, see the description described earlier to install TCP/IP.

To use NetBEUI, select the Protocols tab and then click Add. Select NetBEUI Protocol from the list and then click OK.

Select the Services tab and then click Add. Select Workstation from the list and then click OK.

For printing via NetWare server:

Download the latest Novell Client from the Novell Web site and install it on the computer. Also, be sure to install IPX. See the Novell Web site for detailed information.



5. Restart the computer.

The necessary components are now installed.

Macintosh

To assign an IP address, subnet mask, etc. to your Macintosh, follow the steps below.

Note:

To print using the AppleTalk protocol and configure the network interface with EpsonNet Config, select Built-in Ethernet on the AppleTalk Control Panel. Then configure the network interface with EpsonNet Config. For information on EpsonNet Config, see "About EpsonNet Config for Macintosh".

Mac OS X

1. From the Apple menu, select System Preferences.
2. Open the Network control panel. Click the TCP/IP tab.
3. Select Built-in Ethernet from the Show pull down menu.
4. Assign an IP address and other settings if necessary.
5. Click the Apply Now button to save any changes.

Mac OS 9

1. From the Apple menu, select Control Panel, and then TCP/IP.
2. Set Connect via to Ethernet.

3. Assign an IP address and other settings if necessary.
4. Close the dialog box to save any changes.

How to Set UP the Network Interface

Installing the Network Interface on the Device

Follow the steps below to install the network interface on the device.



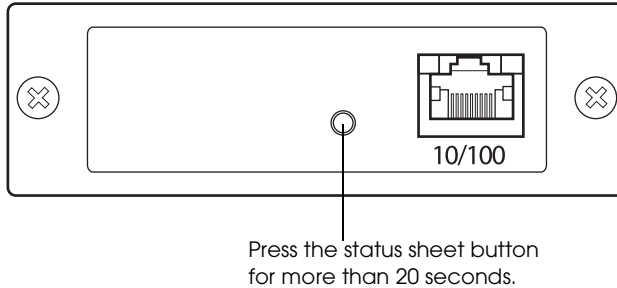
Warning:

Before you install or uninstall the network interface, be sure to turn off the device to prevent electric shock.

1. Make sure that the device is turned off and unplug the power cord from the wall outlet.
2. Insert the network interface in an optional interface slot and tighten the screws. For more details, see the manual shipped with your device.
3. Initialize the network interface. To do this, turn on the device. Then, while the status light and the data light are off, hold down the status sheet button for twenty seconds. Initialization is in progress, while the orange status light flashes and the green data light is on.

Note:

Be sure to initialize the network interface when you install or reinstall it.



* Press the status sheet button for more than 20 seconds.

4. Turn off the device.
5. Connect an Ethernet cable (Category 5 shielded twisted-pair cable) to the RJ-45 connector on the network interface, and then connect its other end to the network.



Caution:

- You must use a Category 5 shielded twisted-pair cable to connect the network interface to prevent malfunction.
- Do not connect or disconnect the network cable when the device is on.
- Do not connect the network interface and the computer directly. Be sure to use a hub to connect the network interface to the network.

Note:

You can use both 10Base-T or 100Base-TX. If you print a lot of data, we recommend that you use a high-speed network of 100Base-TX with a light network traffic.

6. Turn on the device.
7. Check the lights on the network interface. The orange status light flashes and the green data light goes on. After a while, the green or orange status light turns on and the data light flashes.
8. To print a status sheet, press the status sheet button on the network interface. Press the status sheet button once to print a simple status sheet, or twice to print a full status sheet.

If the status sheet prints, this indicates the network interface has been installed correctly.



Caution:

- ❑ *Do not press the status sheet button while the orange status light flashes and the green data light is on; otherwise, the network interface will return to its factory default settings, and the network status sheet will not print correctly as well.*
- ❑ *After turning off the device, wait until the status lights go off before turning it back on or before removing the network interface; otherwise, the network interface may not work correctly.*

Note for Mac OS X 10.2.4:

Since the device supports Rendezvous and is on by default, you can use the device on a network just by connecting it to the network. If you want to disable the Rendezvous setting, use EpsonNet Config.

Now, you can configure the network interface. See “Configuring the network interface for Windows” or “Configuring the network interface for Macintosh”.

Configuring the network interface for Windows

Follow the steps below to connect the network interface to the network.

Note:

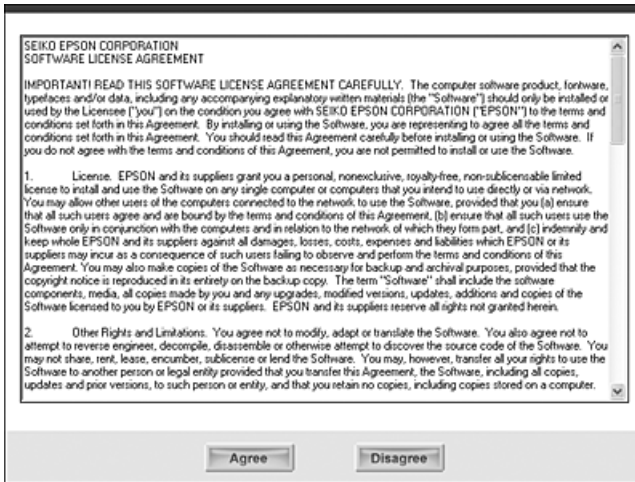
- ❑ *Make sure that the printer driver is installed on your computer before following the steps below. See the manual shipped with your device for instructions on how to install the printer driver.*
 - ❑ *Depending on the settings of the network interface, some dialog boxes in the following steps may not be displayed.*
1. Insert the Software CD-ROM in the CD-ROM drive.

If the Installer dialog box does not appear automatically, double-click EPSetup.exe on the CD-ROM.

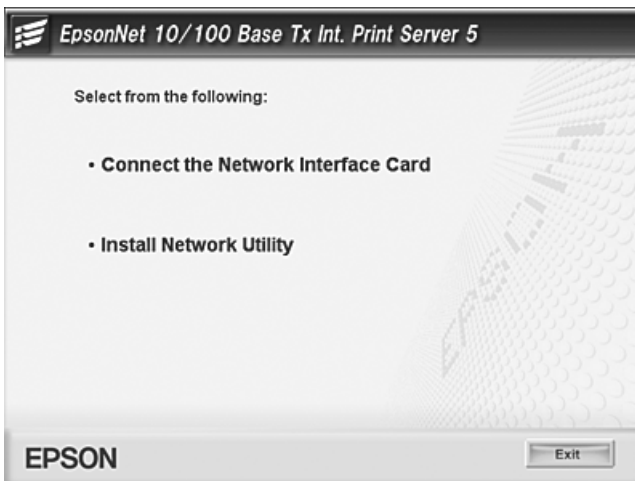
2. From the Welcome screen, click Next.



3. Read the license agreement, and then click Agree.



4. Select Connect the Network Interface Card.

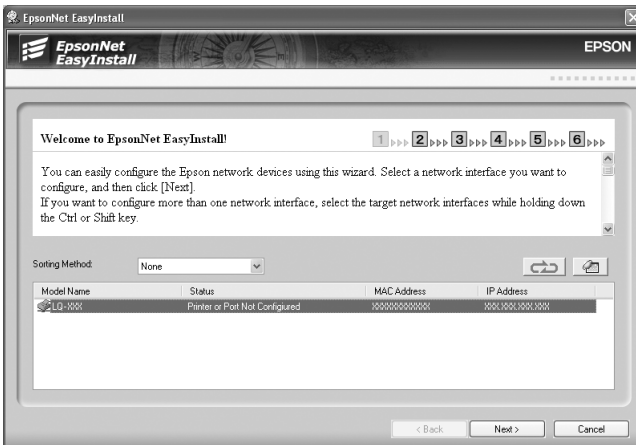


Note for Windows XP Service Pack 2 users:

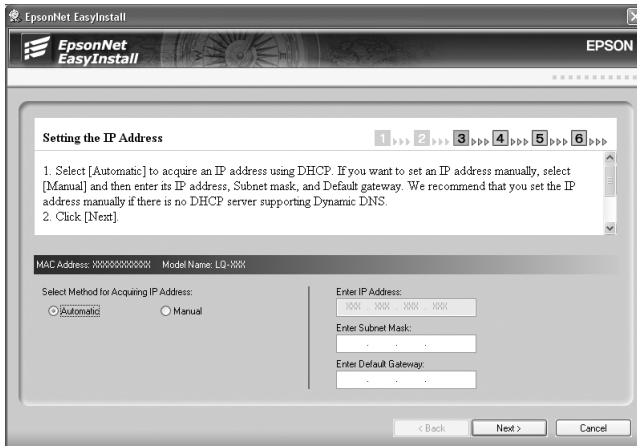
If the following screen appears, click the Unblock button; otherwise the device is not listed on the screen of EpsonNet EasyInstall.



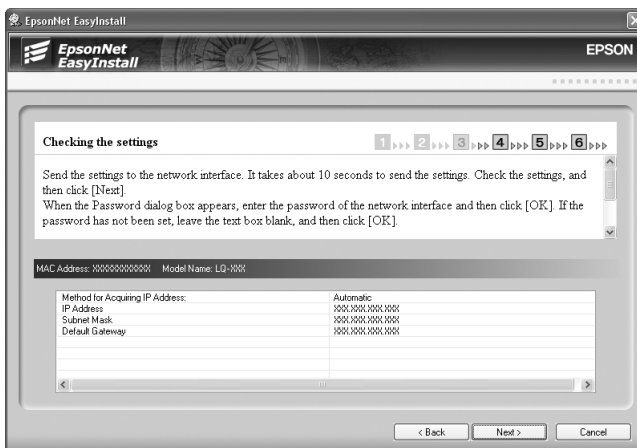
5. Select the target device on which the network interface is installed, and then click Next.



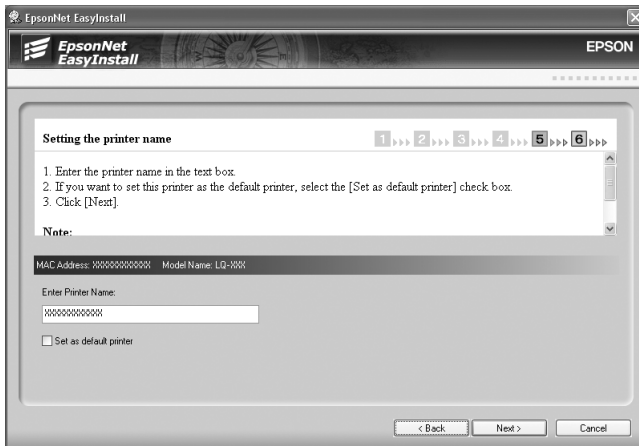
6. Select Auto or Manual to assign the IP address to the network interface. When you select Manual, you must enter the IP address, subnet mask, and default gateway.



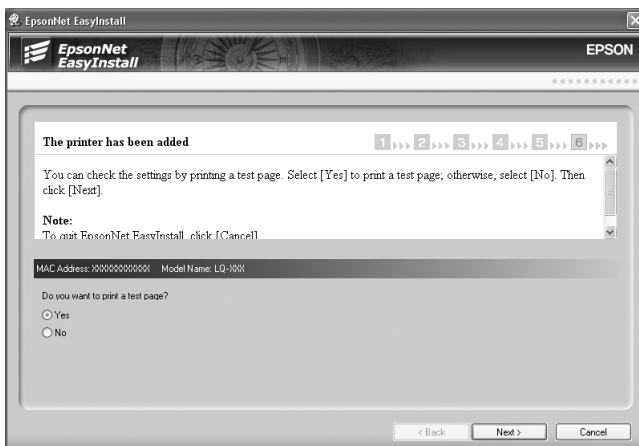
7. Confirm the settings you selected from the previous dialog box, and then click Next.



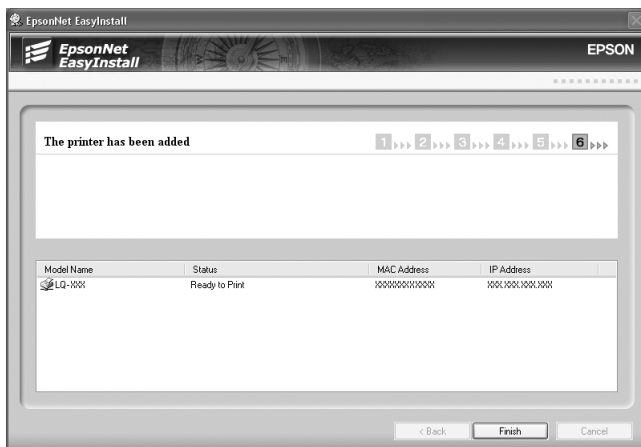
8. Enter the printer name and select the Set a default printer check box if necessary. Click Next.



9. Select Yes or No to print a test page, and then click Next.



10. Click Finish to complete the configuration of the network interface.



Configuring the network interface for Macintosh

Follow the steps below to connect the network interface to the network.

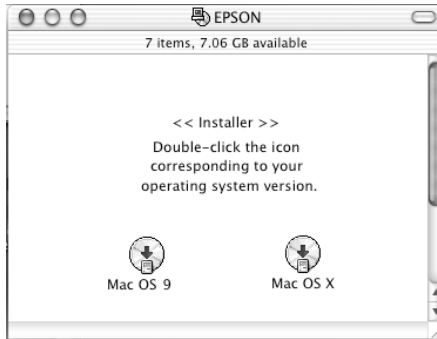
Note:

This section explains the instructions for Mac OS X. The instructions are almost the same for Mac OS 9.

1. Insert the Software CD-ROM in the CD-ROM drive.

If the Installer dialog box does not appear automatically, double-click the EPSON CD-ROM icon on the desktop.

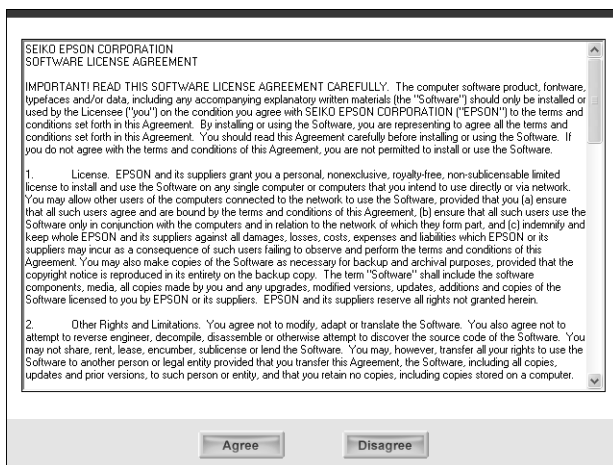
2. Double-click the appropriate OS icon in the EPSON folder.



3. From the Welcome screen, click Next.



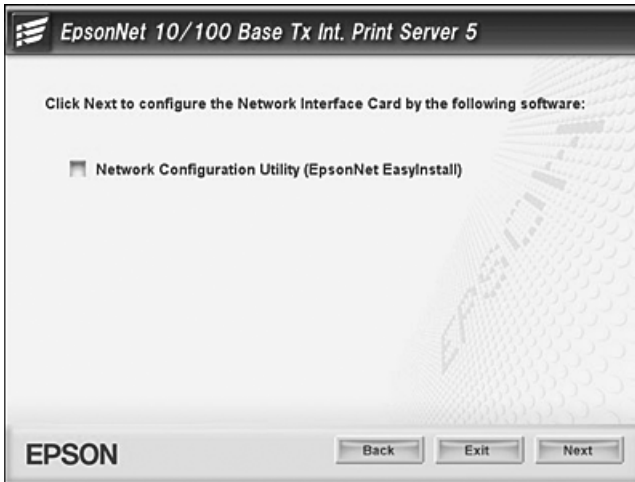
4. Read the license agreement, and then click Agree.



5. Select Connect the Network Interface Card.



6. Click Next.



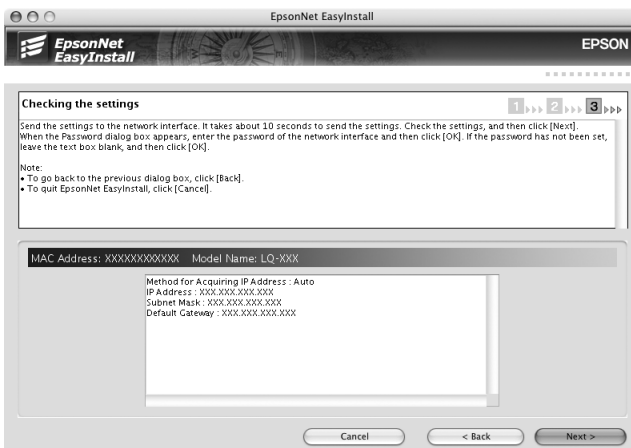
7. Select the target device on which the network interface is installed, and then click Next.



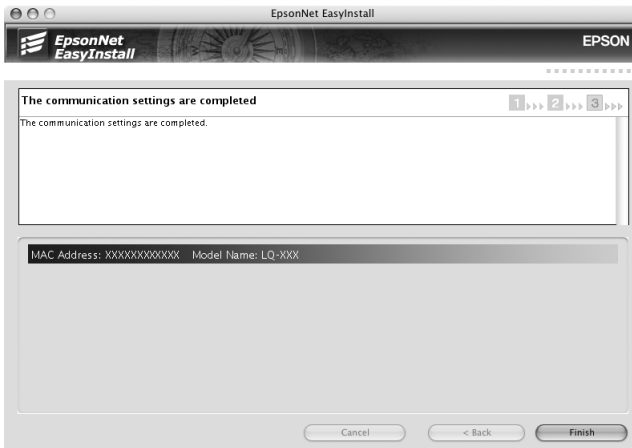
8. Select Auto or Manual to assign the IP address to the network interface, and then click Next. When you select Manual, you must enter the IP address, subnet mask, and default gateway.



9. Confirm the settings you selected from the previous dialog box, and then click Next.



10. Click Finish to complete the configuration of the network interface.



Setting up the printer

The printer driver must be installed on the computer before you can set up the printer. See the device's manual for information on installing the printer driver.

Mac OS X

1. Open the Applications folder.
2. Open the Utilities folder.
3. Open Print Center (for Mac OS X 10.2 or below) or Printer Setup Utility (for Mac OS X 10.3), and then click Add.
4. Select Rendezvous from the drop-down list.
5. Select the printer model from the list.
6. Click Add.

Mac OS 9

1. Open Chooser from the Apple menu.
2. Click the printer icon.
3. Select the zone containing the printer.
4. Select the printer name from the list.
5. Make sure AppleTalk is active.
6. Close Chooser.

Now you can use the device on the network.

Installing the Printer Driver

About Installing the Printer Driver

To print to the network device, you need to install the printer driver on the computer. See the section appropriate for your operating system.

“Windows XP”

“Windows Me/98/95”

“Windows 2000”

“Windows Server 2003”

“Windows NT 4.0”

“Macintosh”

Windows XP

For Windows XP, the printer driver installation procedure differs depending on the printing method you prefer. Epson recommends printing with EpsonNet Print. See “For Windows XP/2000/Server 2003/NT 4.0 Users”.

LPR printing

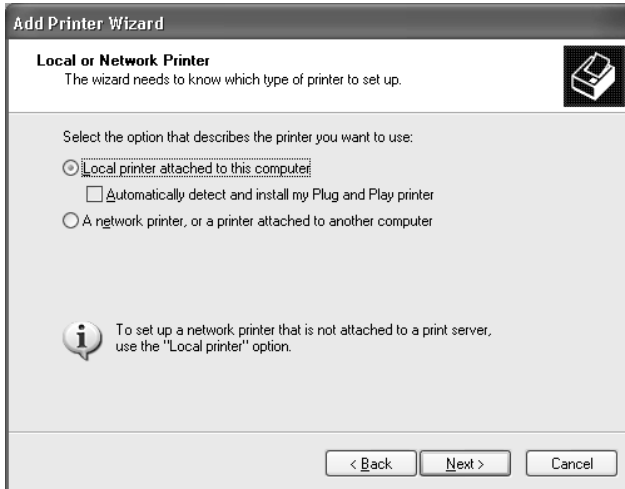
Note:

If you are using EpsonNet Print, the setup procedure is different. See “About EpsonNet Print” for details.

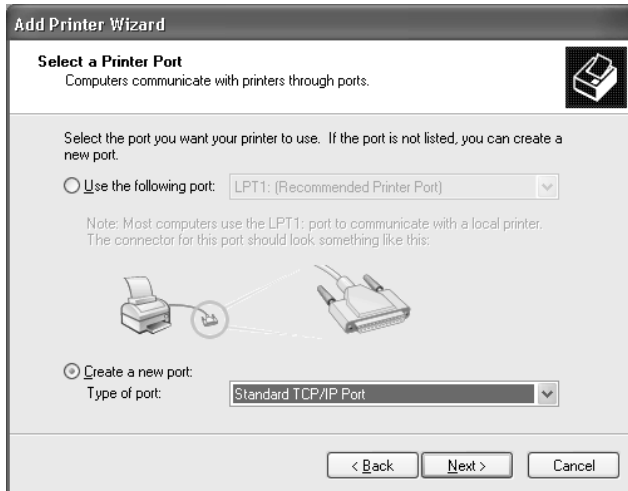
1. Click Start, click Control Panel, click Printers and Other Hardware, and then click Printers and Faxes.
2. Under Printer Tasks, click Add a printer to start the Add Printer wizard, and then click Next.
3. Click Local printer attached to this computer, clear the Automatically detect and install my Plug and Play printer check box, and then click Next.

Note:

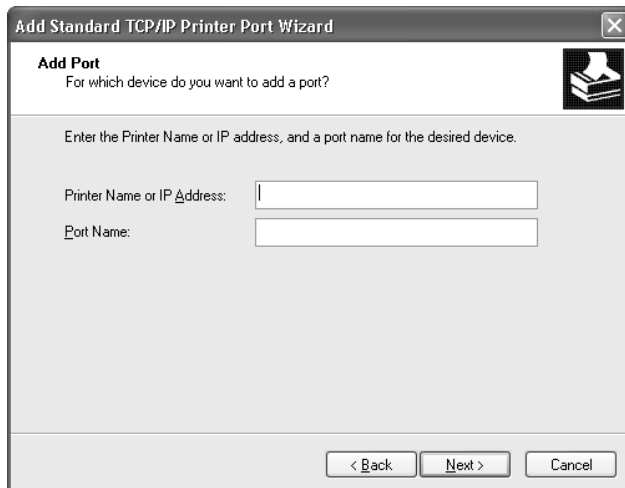
You must clear the Automatically detect and install my Plug and Play printer check box because the device is attached directly to the network, not to a Windows XP computer.



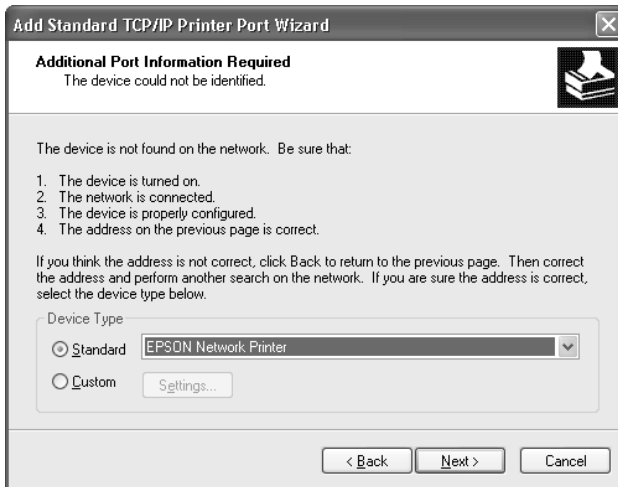
4. Select the Create a new port radio button, and then select Standard TCP/IP Port from the list. Then click Next.



5. Enter the IP address of the network interface and then click Next.



6. If an error occurs, the following dialog box appears. Select the Standard radio button and then select EPSON Network Printer. Click Next.



7. Click Finish.
8. See “Installing a printer driver” to install the printer driver.

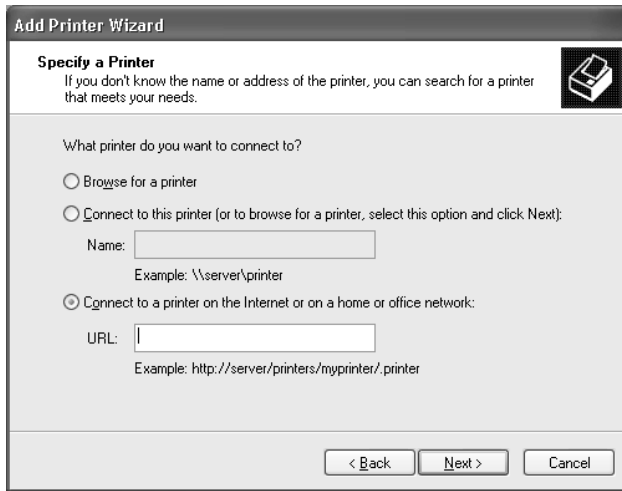
Internet printing

1. Click Start, click Control Panel, click Printers and Other Hardware, and then click Printers and Faxes.
2. Under Printer Tasks, click Add a printer to start the Add Printer wizard, and then click Next.
3. Click A network printer, or a printer attached to another computer, and then click Next.
4. Select the Connect to a printer on the Internet or on a home or office network radio button.

5. Enter the URL of the target device using the format below. The URL should be same as the URL you set on EpsonNet Config's IPP configuration page.

http://IP address of network interface:631/Printer name

Example: **http://192.168.100.201:631/EPSON_IPP_Printer**



Note:

To check the IP address of the network interface, use EpsonNet Config. See "About EpsonNet Config for Windows" for details.

6. Follow the on-screen instructions to set up the device. See "Installing a printer driver" if necessary.

Microsoft Network Shared printing

1. Click Start, click Control Panel, click Printers and Other Hardware, and then click Printers and Faxes.
2. Under Printer Tasks, click Add a printer to start the Add Printer wizard, and then click Next.

3. Click A network printer, or a printer attached to another computer, and then click Next.
4. Select the Browse for a printer radio button, and then click Next.
5. Enter the following in the Printer box or select the device you want to use from the Shared printers list box, and then click Next.

\\NetBIOS name of network interface\Device name of network interface

6. Follow the on-screen instructions to set up the device. See “Installing a printer driver” if necessary.

Installing a printer driver

1. Insert the Software CD-ROM shipped with the device.
2. Close the EPSON Software Installation screen if it appears.
3. Click the Have Disk button. The Install From Disk dialog box appears.
4. Click Browse.
5. Select the CD-ROM drive for Drives, and double-click the WINXP_2K folder. Click Open.
6. Click OK in the Install From Disk dialog box.
7. Select the model name of the device, and then click Next.

Note:

If the Add Printer wizard prompts you to select either Keep existing driver or Replace existing driver, be sure to select the Replace existing driver radio button.

8. Click Finish and follow the on-screen instructions to complete the setup.

When you print using Microsoft Network Shared printing in the Windows XP/2000/Server 2003/NT environment, see “Using the NET USE command” for more details.

Using the NET USE command

If you are running Windows XP/2000/Server 2003/NT and using NetBIOS to connect to the device, we recommend that you use the NET USE command, as follows:

1. Click Start, click Control Panel, click Network and Internet Connections, and then select Network Connections.
2. Under LAN or High-Speed Internet, click the Local Area Connection icon.
3. Under Network Tasks, click Change settings of this connection.
4. Check that Client for Microsoft Networks is installed. If it is not installed, click Install to install it.
5. Run the command prompt and enter the following command.

NET USE *printer port:* \\NetBIOS name of network interface\Device name of network interface

Selecting the port

1. Click Start, click Control Panel, click Printers and Other Hardware, and then click Printers and Faxes.
2. Right-click the printer icon and then select Properties.
3. Click the Ports tab and then select the port you have set with the NET USE command.

Windows Me/98/95

For Windows Me/98/95, the printer driver installation procedure differs depending on the printing method you prefer. Epson recommends printing with EpsonNet Print. See “For Windows Me/98/95 Users”.

LPR printing

Since Windows Me/98/95 does not support LPR, standard TCP/IP printing cannot be used. However, you can print via TCP/IP using the EpsonNet Print utility included on the Software CD-ROM. First, install EpsonNet Print. Then, install the printer driver. See “About EpsonNet Print” for more details.

Internet printing (Windows 98/95)

Internet printing is possible by using the EpsonNet Internet Print utility included on the Software CD-ROM. First, install EpsonNet Internet Print. Then, install the printer driver and set the printer port. See “About EpsonNet Internet Print” for more details.

Internet printing (Windows Me)

Installing the IPP client

The IPP client must be installed on your computer. Follow the steps below to install it.

1. Insert the Windows Me CD-ROM.
2. Select the add-ons folder, and then select the IPP folder.

3. Double-click wpnpins.exe. Then follow the on-screen instructions.
4. Click OK to restart your computer.

Setting up the device

Connect your computer to a device through IPP.

1. Click Start, point to Settings, and then select Printers.
2. Double-click Add Printer, and then click Next.
3. Select the Network Printer radio button, and then click Next.
4. Type the URL of the device, and then click Next.

http://*IP address of network interface:631/printer name*

Example: http://192.168.100.201:631/EPSON_IPP_Printer

Note:

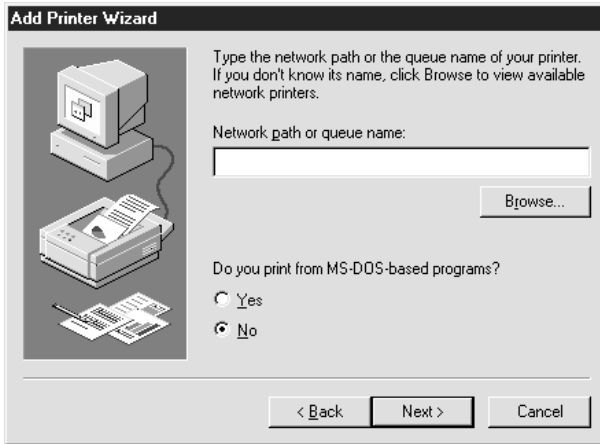
To check the IP address of the network interface, use EpsonNet Config. See “About EpsonNet Config for Windows” for details.

5. See “Installing a printer driver” to install the printer driver.

Microsoft Network Shared printing

1. Click Start, point to Settings, and then select Printers.
2. Double-click Add Printer, and then click Next.
3. Select the Network Printer radio button, and then click Next.
4. Click Browse, and then select the network path from the list. If you cannot browse, enter the following in the Network path or queue name box.

\\NetBIOS name of network interface\
Device name of network interface



5. The Add Printer wizard appears. Click Next.
6. See “Installing a printer driver” to install the printer driver.

Installing a printer driver

1. Insert the Software CD-ROM shipped with the device.
2. Close the EPSON Software Installation screen if it appears.
3. Click the Have Disk button. The Install From Disk dialog box appears.
4. Click Browse.
5. Select the CD-ROM drive for Drives, and then double-click the WIN9X folder. Click OK.
6. Click OK in the Install From Disk dialog box.
7. Select the model name of the device, and then click Next.

Note:

If the Add Printer wizard prompts you to select either Keep existing driver or Replace existing driver, be sure to select the Replace existing driver radio button.

8. Click Finish and follow the on-screen instructions to complete the setup.

When you print using Microsoft Network Shared printing in the Windows XP/2000/Server 2003/NT environment, see “Using the NET USE command” for more details.

Using the NET USE command

If you are running Windows XP/2000/Server 2003/NT and using NetBIOS to connect to the device, we recommend that you use the NET USE command, as follows:

1. Right-click the Network Neighborhood icon or My Network Places icon and then select Properties.
2. Check that Client for Microsoft Networks is in the Components list. If it is not installed, click Add to install it.
3. Run the command prompt and enter the following command.

NET USE *printer port: \\NetBIOS name of network interface\Device name of network interface*

Selecting the port

1. Click Start, point to Settings, and then select Printers.
2. Right-click the printer icon and select Properties.
3. Click the Details tab and select the port you have set with the NET USE command.

Windows 2000

For Windows 2000, the printer driver installation procedure differs depending on the printing method you prefer. Epson recommends printing with EpsonNet Print. See “For Windows XP/2000/Server 2003/NT 4.0 Users”.

LPR printing

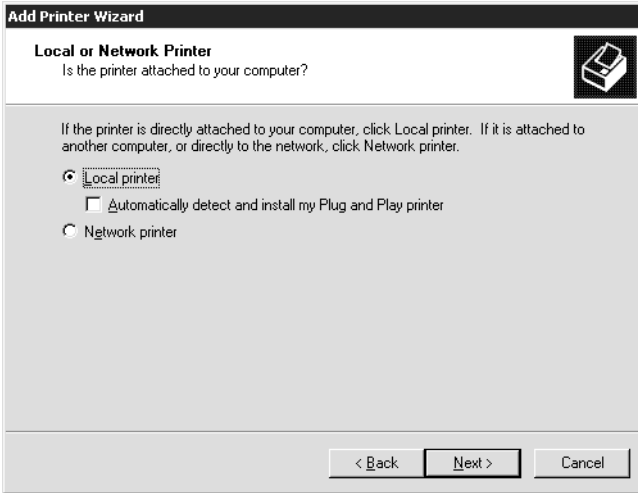
Note:

If you are using EpsonNet Print, the setup procedure is different. See “About EpsonNet Print” for details.

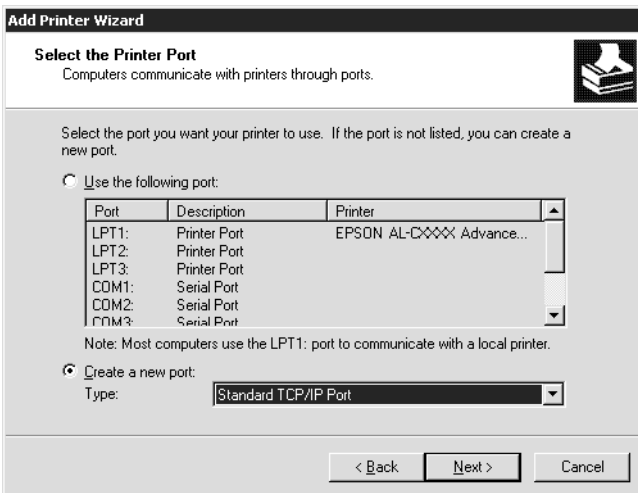
1. Click Start, point to Settings, and then select Printers.
2. Double-click Add Printer to start the Add Printer wizard, and then click Next.
3. Click Local printer, clear the Automatically detect and install my Plug and Play printer check box, and then click Next.

Note:

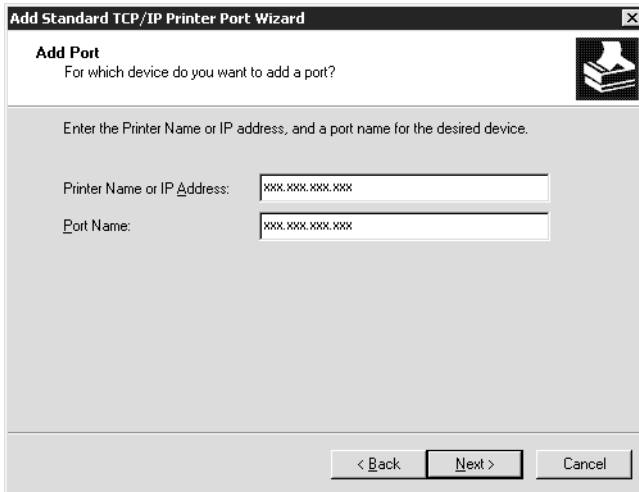
You must clear the Automatically detect and install my Plug and Play printer check box because the device is attached directly to the network, not to a Windows 2000 computer.



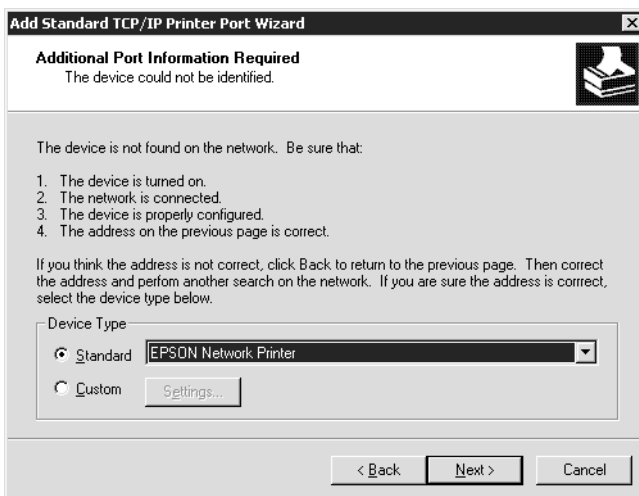
4. Select the Create a new port radio button, and then select Standard TCP/IP Port from the list. Then click Next.



5. Enter the IP address of the network interface and then click Next.



6. If an error occurs, the following dialog box appears. Select the Standard radio button and then select EPSON Network Printer. Click Next.



7. Click Finish.
8. See “Installing a printer driver” to install the printer driver.

Internet printing

1. Click Start, point to Settings, and then select Printers.
2. Double-click Add Printer to start the Add Printer wizard, and then click Next.
3. Select the Network printer radio button and then click Next.
4. Select the Connect to a printer on the Internet or on your intranet radio button.
5. Enter the URL of the target printer using the format below. The URL should be same as the URL you set on EpsonNet Config’s IPP configuration page.

http://IP address of network interface:631/Printer name

Example: **http://192.168.100.201:631/EPSON_IPP_Printer**

Note:

To check the IP address of the network interface, use EpsonNet Config. See “About EpsonNet Config for Windows” for details.

6. Follow the on-screen instructions to set up the printer. See “Installing a printer driver” if necessary.

Microsoft Network Shared printing

1. Click Start, point to Settings, and then select Printers.

2. Double-click Add Printer to start the Add Printer wizard, and then click Next.
3. Select the Network printer radio button and then click Next.
4. Select the Type the printer name, or click Next to browse for a printer radio button.
5. Enter the following in the Name box or click Next to browse for a device.

\\NetBIOS name of network interface\Device name of network interface

6. Follow the on-screen instructions to set up the device. See “Installing a printer driver” if necessary.

Installing a printer driver

1. Insert the Software CD-ROM shipped with the device.
2. Close the EPSON Software Installation screen if it appears.
3. Click the Have Disk button. The Install From Disk dialog box appears.
4. Click Browse.
5. Select the CD-ROM drive for Drives, and double-click the WINXP_2K or WIN2000 folder. Click Open.
6. Click OK in the Install From Disk dialog box.
7. Select the model name of the device, and then click Next.

Note:

If the Add Printer wizard prompts you to select either Keep existing driver or Replace existing driver, be sure to select the Replace existing driver radio button.

8. Click Finish and follow the on-screen instructions to complete the setup.

When you print using Microsoft Network Shared printing in the Windows XP/2000/Server 2003/NT environment, see “Using the NET USE command” for more details.

Using the NET USE command

If you are running Windows XP/2000/Server 2003/NT and using NetBIOS to connect to the device, we recommend that you use the NET USE command, as follows:

1. Right-click the My Network Places icon and then select Properties.
2. Right-click the Local Area Connections icon and then select Properties.
3. Check that Client for Microsoft Networks is in the Components list. If it is not installed, click Install to install it.
4. Run the command prompt and enter the following command.

NET USE *printer port: \\NetBIOS name of network interface\Device name of network interface*

Selecting the port

1. Click Start, point to Settings, and then select Printers.
2. Right-click the printer icon and then select Properties.
3. Click the Ports tab and then select the port you have set with the NET USE command.

Windows Server 2003

For Windows Server 2003, the printer driver installation procedure differs depending on the printing method you prefer. Epson recommends printing with EpsonNet Print. See “For Windows XP/2000/Server 2003/NT 4.0 Users”.

LPR printing

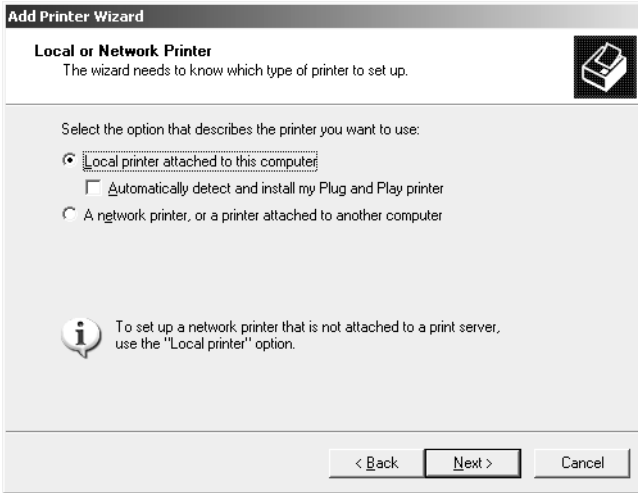
Note:

If you are using EpsonNet Print, the setup procedure is different. See “About EpsonNet Print” for details.

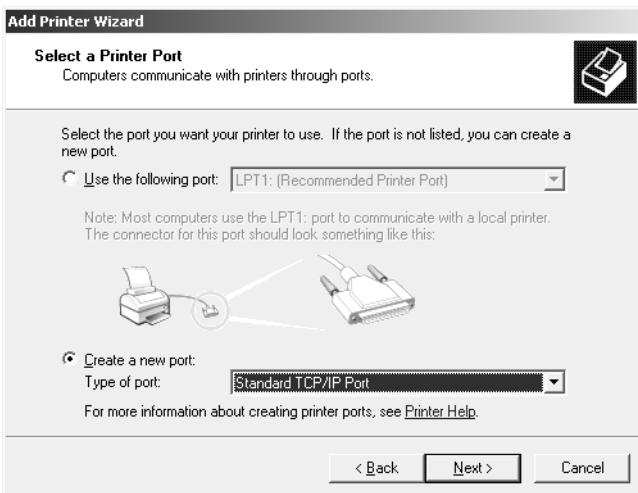
1. Click Start, and then select Printers and Faxes.
2. Double-click the Add Printer icon to start the Add Printer wizard, and then click Next.
3. Click Local printer attached to this computer, clear the Automatically detect and install my Plug and Play printer check box, and then click Next.

Note:

You must clear the Automatically detect and install my Plug and Play printer check box because the device is attached directly to the network, not to a computer.



4. Select the Create a new port radio button, and then select Standard TCP/IP Port from the list. Click Next.



5. When Add Standard TCP/IP Printer Port Wizard dialog box appears, click Next.
6. Enter the IP address of the network interface and then click Next.

Add Standard TCP/IP Printer Port Wizard

Add Port
For which device do you want to add a port?

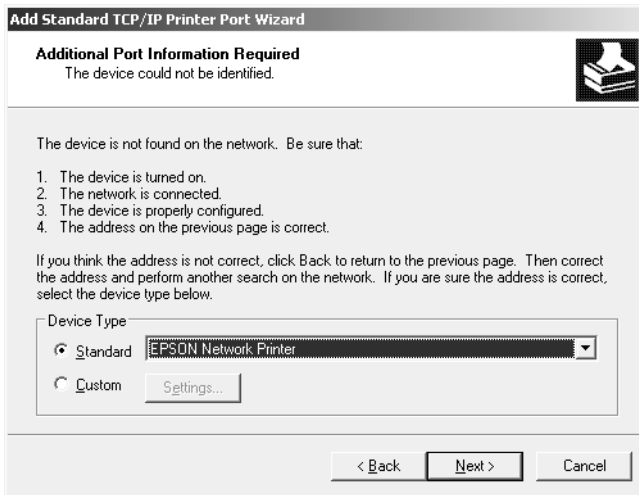
Enter the Printer Name or IP address, and a port name for the desired device.

Printer Name or IP Address:

Port Name:

< Back Next > Cancel

7. If an error occurs, the following dialog box appears. Select the Standard radio button and then select EPSON Network Printer. Click Next.



8. Click Finish.
9. See “Installing a printer driver” to install the printer driver.

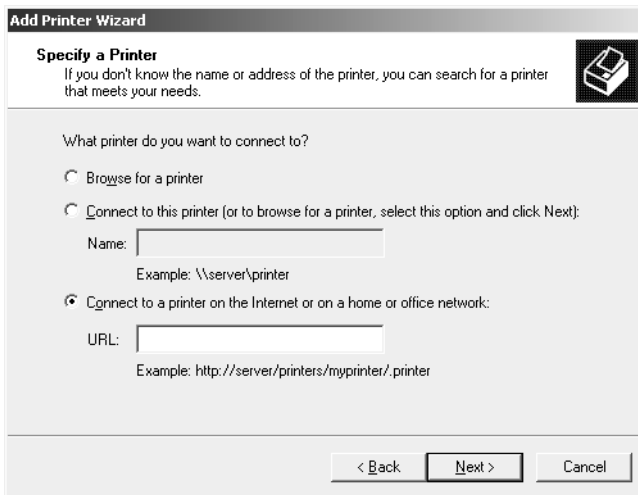
Internet printing

1. Click Start, and then select Printers and Faxes.
2. Double-click the Add Printer icon to start the Add Printer wizard, and then click Next.
3. Select A network printer, or a printer attached to another computer, and then click Next.
4. Select the Connect to a printer on the Internet or on a home or office network radio button.

5. Enter the URL of the target device using the format below. The URL must be the same URL you set on EpsonNet Config's IPP configuration page.

http://IP address of network interface:631/Printer name

Example: http://192.168.100.201:631/EPSON_IPP_Printer



Note:

To check the IP address of the network interface, use EpsonNet Config. See "About EpsonNet Config for Windows" for details.

6. Follow the on-screen instructions to set up the device. See "Installing a printer driver" if necessary.

Microsoft Network Shared printing

1. Click Start, and then select Printers and Faxes.
2. Double-click the Add Printer icon to start the Add Printer wizard, and then click Next.

3. Click A network printer, or a printer attached to another computer, and then click Next.
4. Select the Browse for a printer radio button, and then click Next.
5. Enter the following in the Printer box or select the device you want to use from the Shared printers list box. Click Next.

\\NetBIOS name of network interface\Device name of network interface

6. Follow the on-screen instructions to set up the device. See “Installing a printer driver” if necessary.

Installing a printer driver

1. Insert the Software CD-ROM shipped with the device.
2. Close the EPSON Software Installation screen if it appears.
3. Click the Have Disk button. The Install From Disk dialog box appears.
4. Click Browse.
5. Select the CD-ROM drive for Drives, and then double-click the WinXP_2K or WIN2000 folder. Click Open.
6. Click OK in the Install From Disk dialog box.
7. Select the model name of the device, and then click Next.

Note:

If the Add Printer wizard prompts you to select either Keep existing driver or Replace existing driver, be sure to select the Replace existing driver radio button.

8. Click Finish and then follow the on-screen instructions to complete the setup.

When you print using Microsoft Network Shared printing in the Windows XP/2000/Server 2003/NT environment, see “Using the NET USE command” for more details.

Using the NET USE command

If you are running Windows XP/2000/Server 2003/NT and using NetBIOS to connect to the device, we recommend that you use the NET USE command, as follows:

1. Click Start, point to Control Panel, and then select Network Connections. Click Local Area Connections.
2. Click the Properties button.
3. Check that Client for Microsoft Networks is installed. If necessary, click Install to install it.
4. Run the command prompt and then enter the following command.

NET USE *printer port: \\NetBIOS name of network interface\Device name of network interface*

Selecting the port

1. Click Start, and then select Printers and Faxes.
2. Right-click the printer icon and then select Properties.
3. Click the Ports tab and then select the port you have set using the NET USE command.

Windows NT 4.0

For Windows NT 4.0, the printer driver installation procedure differs depending on the printing method you prefer. Epson recommends printing with EpsonNet Print. See “For Windows XP/2000/Server 2003/NT 4.0 Users”.

LPR printing

Note:

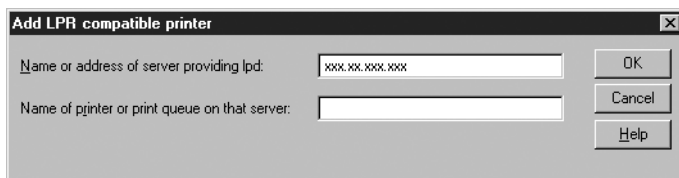
If you are using EpsonNet Print, the setup procedure is different. See “About EpsonNet Print” for details.

1. Click Start, point to Settings, and then select Printers.
2. Double-click the Add Printer icon.
3. Select the My Computer radio button, and then click Next.
4. Click Add Port in the Add Printer wizard dialog box.
5. Select LPR Port from the Available Printer Port list, and then click New Port.

Note:

You cannot use the Lexmark TCP/IP Network Port with the network interface.

6. Enter the IP address of the network interface in the first text box and the device name in the second text box. Click OK.



7. In the Printer Ports dialog box, click Close.
8. In the Add Printer Wizard dialog box, click Next.
9. See “Installing a printer driver” to install the printer driver.

Internet printing

1. Click Start, point to Settings, and then select Printers.
2. Double-click Add Printer to start the Add Printer wizard, and then click Next.
3. Select the Network printer radio button and then click Next.
4. Select the Connect to a printer on the Internet or on your intranet radio button.
5. Enter the URL of the target device using the format below. The URL should be same as the URL you set on EpsonNet Config’s IPP configuration page.

http://IP address of network interface:631/Printer name

Example: http://192.168.100.201:631/EPSON_IPP_Printer

Note:

To check the IP address of the network interface, use EpsonNet Config. See “About EpsonNet Config for Windows” for details.

Follow the on-screen instructions to set up the device. See “Installing a printer driver” if necessary.

Microsoft Network Shared printing

1. Click Start, point to Settings, and then select Printers.

2. Double-click Add Printer.
3. Select the Network printer server radio button and then click Next. The Connect to Printer dialog box appears.
4. Select the device you want to configure from the Shared Printers list. If you cannot select the device, enter the following in the Printer box:

\\NetBIOS name of network interface\Device name of network interface
5. Click OK.
6. Follow the on-screen instructions to set up the device. See “Installing a printer driver” if necessary.

Installing a printer driver

1. Insert the Software CD-ROM shipped with the device.
2. Close the EPSON Installation Program screen if it appears.
3. Click the Have Disk button. The Install From Disk dialog box appears.
4. Click Browse.
5. Select the CD-ROM drive for Drives, and then double-click the WINNT40 folder. Click Open.
6. Click OK in the Install From Disk dialog box.
7. Select the model name of the device, and then click Next.

Note:

If the Add Printer wizard prompts you to select either Keep existing driver or Replace existing driver (recommended), be sure to select the Replace existing driver radio button.

8. Follow the on-screen instructions to complete the setup.

When you print using Microsoft Network Shared printing in the Windows XP/2000/Server 2003/NT environment, see “Using the NET USE command” for more details.

Using the NET USE command

If you are running Windows XP/2000/Server 2003/NT and using NetBIOS to connect to the device, we recommend that you use the NET USE command, as follows:

1. Check that the following services are installed.
Right-click the Network Neighborhood icon on the desktop and select Properties. Click the Services tab and check that Server or Workstation is listed.
2. If it is not installed, click Add.
3. Run the command prompt and enter the following command.

NET USE *printer port: \\NetBIOS name of network interface\Device name of network interface*

Selecting the port

1. Click Start, point to Settings, and then select Printers.
2. Right-click the printer icon and then select Properties.
3. Click the Ports tab and then select the port you have set using the NET USE command.

Macintosh

Follow the steps below to set a device.

Note:

Make sure that the printer driver is installed on your Macintosh before following the steps below. See the manual shipped with your device for instructions on how to install the printer driver.

Mac OS X

Rendezvous printing

1. Open the Applications folder.
2. Open the Utilities folder.
3. Open Print Center (for Mac OS X 10.2 or below) or Printer Setup Utility (for Mac OS X 10.3), and then click Add.
4. Select Rendezvous from the drop-down list.
5. Select the device model from the list.
6. Click Add.

TCP/IP printing

1. Open the Applications folder.
2. Open the Utilities folder.
3. Open Print Center (for Mac OS X 10.2 or below) or Printer Setup Utility (for Mac OX 10.3), and then click Add.
4. Select EPSON TCP/IP from the drop down list.

5. Select the printer model from the list.
6. Click Add.

AppleTalk printing

1. Open the Applications folder.
2. Open the Utilities folder.
3. Open Print Center (for Mac OS X 10.2 or below) or Printer Setup Utility (for Mac OS X 10.3), and then click Add.
4. Select EPSON AppleTalk from the drop down list.
5. Select the zone from the drop down list.
6. Select the printer name from the list.
7. Click Add.

Mac OS 9

AppleTalk printing

1. Open Chooser from the Apple menu.
2. Click the printer icon.
3. Select the zone containing the printer.
4. Select the printer name from the list.
5. Make sure AppleTalk is active.
6. Close Chooser.

Network Software

About the Software

Overview

The software described below are provided with the network interface on the CD-ROM. They are very useful when you set up the network interface and configure and modify the settings of the network interface. For more information on how to use them, see the documentation or online help for each software.

- ❑ **EpsonNet Config for Windows** is a Windows-based configuration utility for administrators that allows you to configure the network interface for various protocols such as TCP/IP, NetWare, MS Network, AppleTalk, IPP, and SNMP. See “About EpsonNet Config for Windows”.
- ❑ **EpsonNet Config for Macintosh** is a Macintosh-based configuration utility for administrators that allows you to configure the network interface for various protocols such as TCP/IP, AppleTalk, and IPP. See “About EpsonNet Config for Macintosh”.
- ❑ **EpsonNet Config with Web Browser** is a Web-based configuration utility that allows you to configure the network interface for various protocols such as TCP/IP, NetWare, MS Network, AppleTalk, IPP, and SNMP. See “About EpsonNet Config with Web Browser”.
- ❑ **EpsonNet Print** is a utility that enables TCP/IP printing for Windows. (Windows XP/2000/Server 2003/NT 4.0 also support OS standard LPR printing.) See “About EpsonNet Print”.

- ❑ **EpsonNet Internet Print** is a utility that supports printing across the Internet using Internet Printing Protocol for Windows 98/95/NT 4.0. See “About EpsonNet Internet Print”.
- ❑ **EpsonNet WebManager** is a Web-based utility that helps network administrators to easily manage network devices. See “About EpsonNet WebManager”.
- ❑ **EpsonNet SetupManager** is a utility that provides a simple printer installation and configuration tool for network administrators, and an easy network printer installation process for clients. See “About EpsonNet SetupManager”.

EpsonNet Config for Windows

About EpsonNet Config for Windows

EpsonNet Config for Windows is a Windows-based configuration software for administrators to configure the network interface for TCP/IP, NetWare, MS Network, AppleTalk, SNMP, and IPP.

Note:

- ❑ *Be sure to use EpsonNet Config included on the Software CD-ROM shipped with this product.*
- ❑ *EpsonNet Config installed on Windows XP/Server 2003 does not support NetBEUI as a search protocol because officially the NetBEUI protocol is not supported on Windows XP/Server 2003.*
- ❑ *If you are using the device in a dial-up environment not running NetWare, clear the Use NetWare check box on the NetWare screen. If this check box is selected, the extra account may be charged when you use the dial-up router.*
- ❑ *When configuring the network interface for NetWare, use the IPX protocol and log in to the NetWare server or the NDS context with supervisor privileges.*
- ❑ *When you configure the network interface for NetWare 5.x, you must log in to the NetWare server using an IPX connection. If you log in to the NetWare server using an IP connection, the NetWare screen and the IPX trap setting of SNMP are not available.*

System Requirements

The following table lists the system requirements of EpsonNet Config.

Operating systems	Windows XP Home Edition/Professional Windows Me Windows 98/98 Second Edition Windows 95 OSR2 or higher Windows NT 4.0 Server/Workstation with Service Pack 5.0 or higher Windows 2000 Server/Professional Windows Server 2003
Hard disk drive space	10 MB

Installing EpsonNet Config for Windows

Follow the steps below to install EpsonNet Config on your computer to configure the network interface.

Note:

If you add or delete protocols or services from your operating system after installing EpsonNet Config, EpsonNet Config may not work correctly. If this happens, uninstall EpsonNet Config and then install it again.

1. Insert the Software CD-ROM in the CD-ROM drive.
2. The Software Installation screen opens automatically.

If the Software Installation screen does not appear, double-click EPSetup.exe on the CD-ROM.

3. Make sure that all applications are closed, and then click the Next button.
4. Read the license agreement, and then click the Agree button. If necessary, select the model of your printer.
5. Select Install Network Utility.
6. Click the icon located next to EpsonNet Config.
7. Follow the on-screen instructions to complete the installation.

Note for Windows XP Service Pack 2 users:

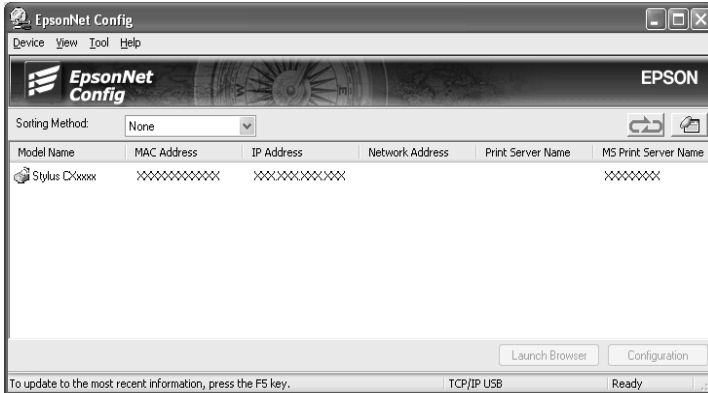
If the following screen appears after you start EpsonNet Config, click the Unblock button; otherwise the devices are not listed on the screen of EpsonNet Config.



Accessing the EpsonNet Config for Windows User's Guide

The *EpsonNet Config for Windows User's Guide* contains detailed information on EpsonNet Config. Follow the steps below to access the *EpsonNet Config User's Guide*.

1. Click Start, point to All Programs (for Windows XP/Server 2003 users) or Programs (for Windows Me/98/95/2000/NT 4.0 users), and then select EpsonNet. Click EpsonNet Config to start it.



2. From the Help menu, select EpsonNet Config Help.

The *EpsonNet Config User's Guide* appears. By clicking the links on the left side of the screen, you can get information on using EpsonNet Config.

EpsonNet Config for Macintosh

About EpsonNet Config for Macintosh

EpsonNet Config for Macintosh is a Macintosh-based configuration software for administrators that allows you to configure the network interface for TCP/IP, AppleTalk, SNMP, and IPP.

Note:

Be sure to use EpsonNet Config included on the Software CD-ROM shipped with this product.

System Requirements

The following table lists the system requirements of EpsonNet Config.

Operating systems	Mac OS 10.x/9.x/8.x
Models	PowerPC Macintosh
Hard disk drive space	10 MB

Installing EpsonNet Config for Macintosh

Follow the steps below to install EpsonNet Config to configure the network interface.

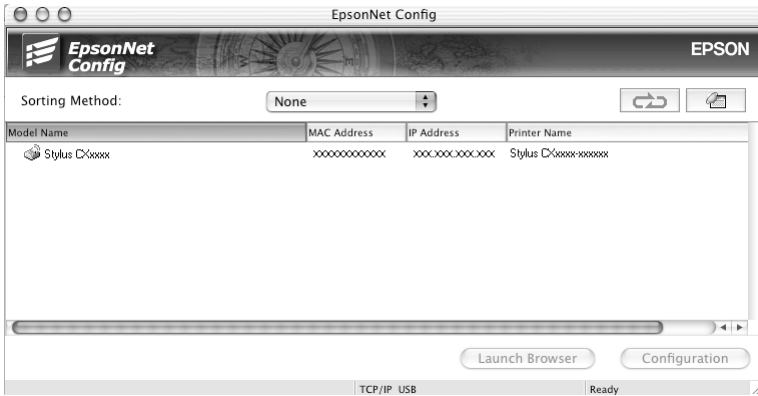
1. Insert the Software CD-ROM in the CD-ROM drive.
2. Double-click the EPSON CD-ROM icon.

3. Double-click the appropriate OS icon in the EPSON folder.
4. From the Welcome screen, click the Next button.
5. Read the license agreement, and then click the Agree button.
6. Select Install Network Utility.
7. Click the Next button
8. Click the icon located next to EpsonNet Config to install EpsonNet Config. Follow the on-screen instructions to complete the installation.
9. Restart your computer.

Accessing the EpsonNet Config for Macintosh User's Guide

The *EpsonNet Config for Macintosh User's Guide* contains detailed information on EpsonNet Config. Follow the steps below to access the *EpsonNet Config User's Guide*.

1. Double-click the Macintosh HD icon. In the Applications folder, double-click the EpsonNet folder, and then double-click the EpsonNet Config folder. Finally, double-click the EpsonNet Config icon.



2. From the Help menu, select EpsonNet Config Help.

The *EpsonNet Config User's Guide* appears. By clicking the links on the left side of the screen, you can get information on using EpsonNet Config.

EpsonNet Config with Web Browser

About EpsonNet Config with Web Browser

EpsonNet Config with Web Browser is a Web-based utility designed to configure the network interface for use on a network.

By typing the IP address of the network interface for the URL in your browser, you can start EpsonNet Config to allow you to configure the network interface for TCP/IP, NetWare, MS Network, AppleTalk, IPP, and SNMP.

Supported Web browser

- Microsoft Internet Explorer version 4.0 or later
- Netscape Communicator version 4.0 or later
- Netscape Navigator version 3.02 or later
- Apple Safari 1.2 or later

About Web browser setting

When running EpsonNet Config with Web Browser, be sure to disable the proxy server to use the utility through the Internet. If you use Internet Explorer as the web browser, use the following steps to clear the Access the Internet using a proxy server check box. For other web browsers, see the documentation or online help of your web browser.

1. Start up Internet Explorer.
2. Select Internet Options from the Tool menu.

3. Click the Connections tab.
4. Click the LAN Settings button.
5. Clear the Use a proxy server for your LAN (These settings will not apply to dial-up or VPN connections), check box.

Configuring the Network Interface Using EpsonNet Config with Web Browser

After you have assigned an IP address to the network interface using EpsonNet EasyInstall, EpsonNet Config for Windows or Macintosh, or the arp/ping command, you can configure the network interface using EpsonNet Config with Web Browser.

Note:

- A Web browser must be installed on your computer.*
- TCP/IP must be correctly set for the computer and the network interface.*
- Do not run both EpsonNet Config for Windows or Macintosh and EpsonNet Config with Web Browser at the same time.*
- Your browser may restrict some characters you can use. For details, see your browser or operating system documentation.*
- If you are using the dial-up environment and not using NetWare, select Disable on the NetWare screen. If Enable is selected, the extra account may be charged when you are using the dial-up router.*

Follow the steps below to change the IP address using EpsonNet Config with Web Browser.

1. Turn on the device.

2. Run EpsonNet Config with Web Browser using one of the following ways.
 - ❑ Run EpsonNet Config for Windows or Macintosh. Select the device you want to configure from the list and then click Launch Browser.
 - ❑ Open your browser, and then type in the IP address of the network interface directly. Do not run EpsonNet Config for Windows or Macintosh.

http:// / IP address of network interface /

Example: **http://192.168.100.201/**

Note:

To check the IP address of the network interface, use EpsonNet Config. For details, see "About EpsonNet Config for Windows" for Windows users, or "About EpsonNet Config for Macintosh" for Macintosh users.

Note on NetWare setting:

- ❑ From any NetWare client, log in to the target NetWare server or NDS context with supervisor privileges.
 - ❑ You cannot create a print server, print queue, or printer with EpsonNet Config with Web Browser. You must create these objects before using EpsonNet Config with Web Browser.
3. Click TCP/IP under Network on the Configuration menu to display the TCP/IP setting screen.

Note:

If you want to configure a protocol other than TCP/IP, see "Configuration - Network Screens".

4. Select a method for acquiring the IP address. When you select Auto, an IP address is automatically assigned to the network interface via DHCP. If you want to set the IP address manually, select Manual.

Note:

- The network administrator must check any changes made to the IP address settings.*
 - When Auto is selected, an IP address can be acquired via DHCP. To use the DHCP server, make sure it is installed on your computer and correctly configured. See your operating system's online help for detailed instructions.*
 - If Set Using Automatic Private IP Addressing (APIPA) is enabled, a private IP address is automatically assigned to the network interface even when there are no DHCP servers on your system or your network.*
 - If the Dynamic DNS function is not supported, we recommend that you select Manual and then enter an IP address. This is because if you select Auto, the IP address of the network interface changes every time you turn on the device so that you need to change the printer port setting accordingly.*
5. To assign an IP address manually, enter the IP address, the subnet mask, and the default gateway. Be sure the IP address does not conflict with any other devices on the network.

Note:

If there is a server or a router functioning as a gateway, enter the IP address of the server or the router for the gateway address. If there is no gateway, leave the default values there.

6. If you want to get a private address between 169.254.1.1 and 169.254.254.254 automatically when an IP address cannot be obtained by the DHCP server, select Enable for Set Using Automatic Private IP Addressing (APIPA); otherwise, select Disable.

7. When setting an IP address using the ping command, select Enable for Set Using PING. Select Disable when setting an IP address with EpsonNet Config; this prevents any unexpected change of the IP address.

Note:

Be sure to select Disable when not using ping; this prevents an unexpected change of the IP address by EpsonNet WebManager.

8. Select Enable for Acquire DNS Server Address Automatically if you want to acquire the DNS server address using the DHCP server.

If you want to enter the DNS server address manually, select Disable and then enter the IP address of the DNS server.

9. Select Enable for Acquire Host Name and Domain Name Automatically if you want to acquire the host name and the domain name using the DHCP server.

If you want to specify manually, enter the host name and the domain name in the text boxes.

10. Select Enable for Register Network Interface Address to DNS Server if you want to register the host name and domain name to the DNS server through the DHCP server that supports Dynamic DNS.

If you want to register the host name and the domain name directly to the DNS server, select Enable for Register Network Interface Address Directly to DNS Server.

11. Select Enable or Disable for Use Universal Plug and Play. Select Enable if you want to use the Universal Plug and Play function on Windows Me or future operating systems.
12. Change the default Universal Plug and Play device name, if desired. This device name is used for Windows that supports the Universal Plug and Play function.

13. Mac OS X only:
Select Enable or Disable for Use Rendezvous. If you select Enable, enter the Rendezvous Name and the Rendezvous Printer Name. If your network environment supports DHCP, you can use the device on the network just by enabling this setting.
14. Click Submit and then enter the password to update the settings. For more information on setting the password, see "Password".

Note:

If you have set the Administrator Name in the Administrator screen, enter the administrator name for the user name.

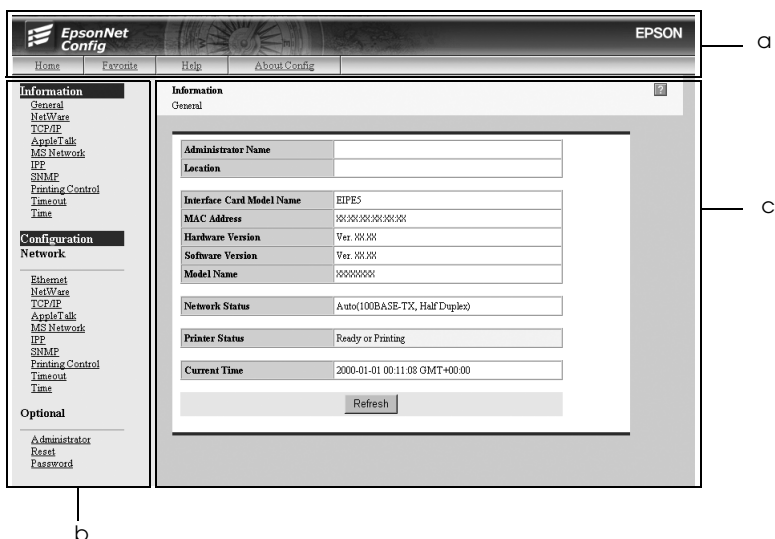
15. If the message "Configuration change is complete!" appears on your screen, the update is complete. Do not exit the Web browser and do not send a job to the device until this message appears. Follow the on-screen instructions to reset the device.

Note:

- Since the new IP address is assigned after the device is reset, you need to restart EpsonNet Config with Web Browser by entering the new IP address.*
- Only changes on the page where you press the Submit button take effect.*

Opening Screen

Any user can access the following screen by typing the IP address of the network interface for the URL in your browser. The opening screen consists of the Index frame, the Menu frame, and the Information frame.



- a. Index Frame
- b. Menu Frame
- c. Information Frame

Index Frame

The Index frame is displayed on the top of the web browser. The following links are provided on the Index frame.

Home	Links to the opening screen.
Favorite	Links to a Web site previously defined by the administrator.
Help	Links to Help.
About Config	Links to the copyright and version information for EpsonNet Config.
EPSON logo	Links to the Epson Web site (http://www.epson.com).

Menu Frame

The Menu frame is displayed on the left of the web browser. The following links are provided on the Menu frame.

Information	
General	Displays the basic information about the network interface.
NetWare	Displays settings for NetWare.
TCP/IP	Displays settings for TCP/IP.
AppleTalk	Displays settings for AppleTalk.
MS Network	Displays settings for Microsoft Network.
IPP	Displays settings for IPP.
SNMP	Displays settings for SNMP.
Printing Control	Displays settings for Printing Control.
Timeout	Displays settings for Timeout.
Time	Displays settings for Time.

Configuration - Network	
Ethernet	Configure the desired Ethernet settings.
NetWare	Configure the applicable settings for NetWare.
TCP/IP	Configure the desired settings/method for TCP/IP.
AppleTalk	Configure the desired settings for AppleTalk.
MS Network	Configure the desired settings for Microsoft Network.
IPP	Configure the desired settings for IPP.
SNMP	Configure the desired settings for SNMP.
Printing Control	Configure the desired settings for Printing Control
Timeout	Configure the desired settings for Timeout
Time	Configure the desired settings for Time.
Configuration - Optional	
Administrator	Enter the name of the administrator and a link to a favorite Web site.
Reset	Resets the device and returns to the default settings.
Password	Set the password to protect settings.

Information Frame

On the Information frame, the contents of the item selected on the Menu frame are displayed.

General

Items	Explanations
Administrator Name	Displays the administrator name of the device.
Location	Displays the location of the device.
Interface Card Model Name	Displays the model of the network interface.
MAC Address	Displays the MAC address of the network interface. You can distinguish the network interface by its MAC address.
Hardware Version	Displays the hardware version of the network interface.
Software Version	Displays the software version of the network interface.
Model Name	Displays the product name of the device attached to the network interface.
Network Status	Displays the data transmission rate and communication mode.
Printer Status	The background color of the text box indicates the device's status. Green indicates that the device is idle or printing. Yellow indicates that either the paper or toner is low. Red indicates that either the paper or toner is completely out, the device is offline, there is a paper jam, the cover is open, or an error has occurred.
Current Time	Displays the current time.
Refresh button	Displays the latest information on the device status. Since the device status is not updated automatically, click the button to display the latest information of the device.

Configuration - Network Screens

Ethernet

Items	Explanations
Speed/Duplex Setting	Select the data transmission rate and communication mode. If you do not know it, select Auto.

NetWare

NetWare Basic Settings

Items	Explanations
Use NetWare	Enables or disables NetWare.
Frame Type	Select the frame type. Usually, Auto is recommended.
Mode	Select the appropriate NetWare mode.

Print Server Mode

Items	Explanations
Print Server Name	Enter the print server name (up to 47 characters).
Polling Interval (5-90)	Enter the polling interval in seconds (between 5 and 90 seconds).
NetWare Password	Enter the password (up to 20 characters) you use when you log in to the print server.

NDS

Items	Explanations
NDS Tree Name	Enter the NDS tree name (up to 31 characters) if the mode is NDS Print Server.
NDS Context	Enter the NDS context (up to 255 characters) if the mode is NDS Print Server.

Bindery

Items	Explanations
Primary File Server Name	If the mode is Bindery Print Server, enter the primary file server name (up to 47 characters) where you log in to the print server.

Remote Printer Mode

Items	Explanations
Primary Print Server Name	Enter the primary print server name (up to 47 characters).
Printer Port Number (0-254)	Enter the printer port number (between 0 and 254).

TCP/IP

IP Address Settings

Items	Explanations
Method for Acquiring the IP Address	Select a method for acquiring IP addresses. If Auto is selected, an IP address is assigned via DHCP. To use the DHCP server, make sure it is installed on your computer and correctly configured. See your operating system's online help for detailed instructions. To set the IP address manually, select Manual.
IP Address	Enter an IP address for the network interface. Be sure the IP address does not conflict with any other devices on the network.
Subnet Mask	Set the subnet mask.
Default Gateway	Set the gateway address if needed.
Set Using Automatic Private IP Addressing (APIPA)	Select Enable to get a private address between 169.254.1.1 and 169.254.254.254 automatically when an IP address cannot be obtained by the DHCP server; otherwise, select Disable.
Set Using PING	Enables or disables IP address setting using the ping command.

DNS Server Address Settings

Items	Explanations
Acquire DNS Server Address Automatically	Select either Enable or Disable to acquire the DNS server address from the DHCP server.
DNS Server Address	Enter the DNS server address. When the DHCP server does not respond even if Enable is selected for Acquire DNS server address automatically, the DNS server address set here is used.

Host Name and Domain Name Settings

Items	Explanations
Acquire Host Name and Domain Name Automatically	Select either Enable or Disable to acquire the host name and domain name from the DHCP server.
Host Name	Enter the host name supported by Dynamic DNS (between 2 and 63 characters). The total number of characters of the host name and the domain name must not exceed 251.
Domain Name	Leave it blank or enter two or more characters of the domain name. The total number of characters of the host name and the domain name must not exceed 251.
Register Network Interface Address to DNS Server	Select Enable if you want to send the host name and the domain name to the DHCP server that supports Dynamic DNS update to request for DNS dynamic updates.
Register Network Interface Address Directly to DNS Server	Select Enable if you want to directly send the host name and the domain name to the DNS server that supports Dynamic DNS update to request DNS dynamic updates. When Disable is selected for Register network interface Address to DNS server, this item is also disabled.

Universal Plug and Play Settings

Items	Explanations
Use Universal Plug and Play	Enables or disables Universal Plug and Play.
Device Name	Enter the device name (between 2 and 63 characters).

Rendezvous Settings

Items	Explanations
Use Rendezvous	Select either Enable or Disable to use Rendezvous.
Rendezvous Name	Enter the Rendezvous name.
Rendezvous Printer Name	Enter the printer name for Rendezvous.

SLP Settings

Items	Explanations
Use SLP	Select either Enable or Disable to use the SLP function.
TTL (-1, 1-15)	Enter the number of routers through which a packet can travel before being discarded or returned when using the SLP function. If you do not want to use the TTL setting, enter -1.

AppleTalk

Items	Explanations
Use AppleTalk	Enables or disables AppleTalk.
Printer Name	Enter the name of the device attached to the network interface (up to 32 characters).
Zone Name	Enter the network zone name (up to 32 characters). To have the zone selected automatically, select Auto for the Network Number Set and enter an asterisk (*) in this text box.
Entity Type	Displays the entity type of the device. Do not change the entity type unless "epson" appears. If "epson" appears, enter an entity type to match your device.

Items	Explanations
Network Number Set	Select Auto or Manual. Usually Auto is recommended.
Network Number for Manual Mode(0-65534)	Enter the network number when you select Manual for Network Number Set.

MS Network

Items	Explanations
Use Microsoft Network Shared Printing	Enables or disables the Microsoft network shared printing.
Host Name	Enter the host name (up to 15 characters).
Workgroup Name	Enter the workgroup name or domain name (up to 15 characters).
Printer Share Name	Enter the file share name (up to 12 characters). LPT "X" or COM cannot be used. ("X" represents a number, either 0 or larger.)

IPP

You must make the following settings before setting up the device for Internet Printing on Windows XP/Me/2000/Server 2003 or using EpsonNet Internet Print on Windows 98/95/NT 4.0. See "About EpsonNet Internet Print" for more information.

Items	Explanations
IPP URL	Displays the device's URL for Internet Printing. Format: http://IP address of network interface:631/printer name set below Example: http://192.168.100.201:631/EPSON_IPP_Printer

Items	Explanations
Printer Name	Enter the name of a device to use for Internet Printing (up to 127 characters). Example: EPSON_IPP_Printer
Location	Enter the name of the device's physical location (up to 64 characters).

SNMP

Community

Items	Explanations
Community	Displays the community name.
Read Only	The word "public" always appears.
Read/Write	Enter the Read/Write community name (up to 32 characters).

IP Trap

Items	Explanations
Trap	Enables or disables the trap.
Address	Enter the IP address of the network interface to which the trap is sent.
Community	Enter the community name (up to 32 characters).
Port Number	Enter the port number of the receive host, in decimal (between 0 and 65535).

IPX Trap

Items	Explanations
Trap	Enables or disables the trap.
Address	Enter the network address and the node number (MAC Address) of the network interface to which the trap is sent. Format: Network Address: Node Number Suppose the network address is A7E00BB0 (hexadecimal) and the node number is 000048930000 (hexadecimal). In this case, the address is A7E00BB0:000048930000.
Community	Enter the community name (up to 32 characters).
Socket Number	Enter the socket number of the receive host, in hexadecimal (between 0 and FFFF).

Printing Control

Printing Control Settings

Items	Explanations
Printing Control	Enables or disables the printing control.
Printer Access Control	Select Allow or Deny. Selecting Allow permits the network access from the IP addresses registered on the printer access control list. On the other hand, selecting Deny blocks the network access from the IP addresses registered on the printer access control list.
Printer Access Control List	Enter the IP address ranges by which the network access is restricted.

Timeout

Printing

Items	Explanations
LPR(0-3600)	Set the length of time for LPR before a timeout occurs (between 0 and 3600 seconds). Enter 0 not to apply the timeout.
RAW(Port9100)	Set the length of time for RAW(Port9100) before a timeout occurs (between 0 and 3600 seconds). Enter 0 not to apply the timeout.
IPP(0-3600)	Set the length of time for IPP before a timeout occurs (between 0 and 3600 seconds). Enter 0 not to apply the timeout.

Time

Items	Explanations
Time	Displays the current time. Click the Get Time button to reload the display. When the time server is enabled, time is acquired from the time server.

Manual Settings

If the network interface has RTC (Real Time Clock), you can set the time manually.

Items	Explanations
Date (YYYY-MM-DD)	Enter the year, month, and day.
Time (HH:MM:SS)	Enter the hour, minutes, and seconds.

Items	Explanations
Time Difference (HH:DD)	Enter the difference between time at the present location and Greenwich Mean Time (GMT).
Apply button	Applies the settings.

Time Server Settings

Items	Explanations
Time Server	Select either Enable or Disable to synchronize time with the time server.
Time Server Address	Enter the IP address of the time server.
Synchronize Interval(1-10080)	Enter the time interval in minutes for automatic time synchronization.
Time Difference (GMT+/-HH:MM)	Enter the difference between the time at the present location and Greenwich Mean Time (GMT).
Time Server Status	Displays the connection status with the time server.
Apply button	Applies the settings.

Configuration - Optional Screens

Administrator

You can link to the Web site specified on this screen when you click Favorite (the name can be changed) in Index.

Items	Explanations
Administrator Name	Enter the name of the administrator (up to 255 characters).
Location	Enter the location of the device (up to 255 characters).

Favorite

Items	Explanations
Favorite Name	Enter the link item name (up to 20 characters) that will be displayed in the Index menu.
Favorite URL	Enter a URL (up to 64 characters).
Description	Enter any comments for the URL above (up to 64 characters).

Note:

Links to ftp are not supported.

Reset

You can reset the network interface or return the settings to the default values.

Items	Explanations
Reset button	Turns the power off and on again. Click this button to make the changes take effect.
Return to Default button	Returns the network interface to the default settings.

Password

The password set here protects the settings. You will be asked for the password when you update or change the settings on each setting screen. Passwords are case sensitive. No password is set by default.

Items	Explanations
Old Password	Enter the current password.
New Password	Enter the new password (up to 20 characters).
New Password (again)	Enter the new password again to confirm.

Note:

- ❑ *The same password is used for EpsonNet Config for Windows and Macintosh, and EpsonNet Config with Web Browser.*
- ❑ *If you forget your password, you need to initialize the network interface. See “Initializing the Network Interface” for instructions.*

EpsonNet Print

About EpsonNet Print

EpsonNet Print is a utility program that provides peer to peer printing to Epson devices on the TCP/IP network.

By using EpsonNet Print, you can find a device located in the same segment or beyond a router. You can select LPR standard printing, LPR enhanced printing, or High-speed printing.

System Requirements

EpsonNet Print supports the following environments.

Operating systems	Windows XP (with Service Pack 1 or higher) Windows Me, 98, 98 Second Edition Windows 95 OSR2 (with Internet Explorer version 5.0 or higher) Windows 2000 (with Service Pack 4 or higher) Windows NT 4.0 (with Service Pack 6 or higher) Windows Server 2003
CPU	Pentium II 400 MHz or better recommended
Memory	64 MB or more
Hard disk space	20 MB or more
Display	800 × 600 screen resolution, 256 color or more

Installing EpsonNet Print

Follow the steps below to install EpsonNet Print. Be sure to install it on a computer connected to the network.

1. Insert the Software CD-ROM in the CD-ROM drive.
2. The Software Installation screen opens automatically.

If the Software Installation screen does not appear, double-click EPSetup.exe on the CD-ROM.

3. Make sure that all applications are closed, and then click the **Next** button.
4. Read the license agreement, and then click the **Agree** button. If necessary, select the model of your printer.
5. Select **Install Network Utility**.
6. Click the icon located next to **EpsonNet Print**.
7. Follow the on-screen instructions to complete the installation.

The installation is complete. You can add a new port for the printer with using EpsonNet Print.

- For Windows XP/2000/NT 4.0/Server 2003 users, see “For Windows XP/2000/Server 2003/NT 4.0 Users”.
- For Windows Me/98/95 users, see “For Windows Me/98/95 Users”.

For Windows XP/2000/Server 2003/NT 4.0 Users

Follow the steps below to add a port using the Add Printer Wizard.

- ❑ If you want to add a port for a device with its IP address assigned automatically by the DHCP server or router, see “Adding a port for a device assigned with a dynamic IP address”.
- ❑ If you want to add a port for a device with its IP address assigned manually, see “Adding a port for a device assigned with a static IP address”.

Note:

- ❑ *Be sure that the computer is connected to the network and TCP/IP is correctly set.*
- ❑ *A valid IP address must be assigned to the network interface.*

Adding a port for a device assigned with a dynamic IP address

1. **For Windows XP:** Click Start and then Printers and Faxes. Under Printer Tasks, click Add a printer to start the Add Printer Wizard.

For Windows 2000: Click Start, point to Settings, and then select Printers. Double-click Add Printer in the Printers folder to start the Add Printer Wizard.

For Windows Server 2003: Click Start and then Printers and Faxes. Double-click Add Printer in the Printers folder to start the Add Printer Wizard.

For Windows NT 4.0: Click Start, point to Settings, and then select Printers. Double-click the Add Printers icon.

2. Click Next.

3. **For Windows XP/Server 2003:** Click Local printer attached to this computer, clear the Automatically detect and install my Plug and Play printer check box, and then click Next. Select the Create a new port radio button, and then select EpsonNet Print Port from the list. Click Next.

Note for Windows XP Service Pack 2 users:

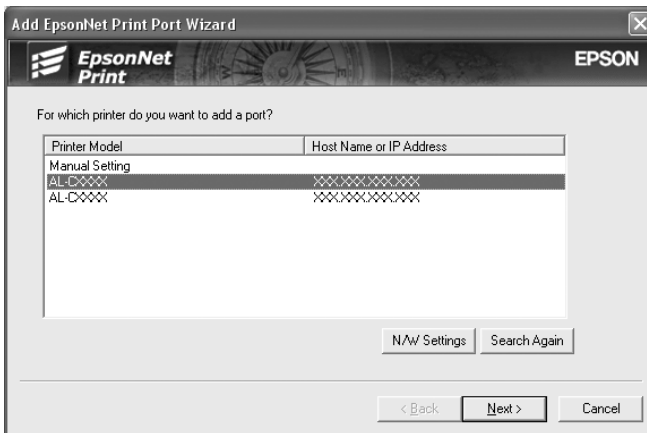
If the following screen appears, click the Unblock button, and then click the Search Again button to search the devices.



For Windows 2000: Click Local printer, clear the Automatically detect and install my Plug and Play printer check box, and then click Next. Select the Create a new port radio button, and then select EpsonNet Print Port from the list. Click Next.

For Windows NT 4.0: Select the My Computer radio button, and then click Next. Click the Add Port button in the Add Printer wizard dialog box. Select EpsonNet Print Port from the Available Printer Port list, and then click the New Port button.

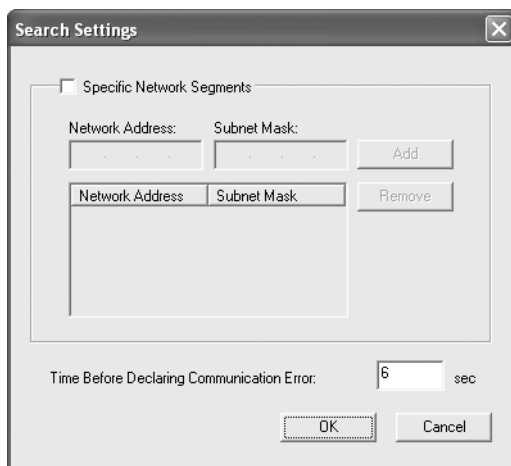
4. Select the target device, and then click Next.



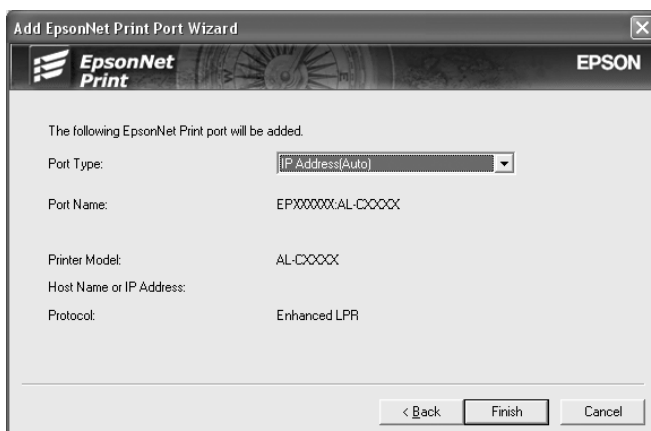
Note:

- ❑ If the target device is not in the list, click the Search Again button to search the devices using new parameters.
- ❑ Each column can be sorted in ascending or descending order by clicking the column header. However, Manual Setting is always displayed on the top of the list regardless of sorting.

- ❑ *If you want to search devices in other segments, click the N/W Settings button. Select the Specific Network Segments check box, and then enter the network address and subnet mask of the network segment for the search. Then click the Add button. You can also specify Time Before Declaring Communication Error.*



5. Confirm the information about the device's port you want to configure, and then click Finish.



Items	Explanations
Port Type	<p>The following items are listed in the pull-down menu, and you can select the port type you need.</p> <p>IP Address(Auto): Configure the port automatically. If the IP address of the device is acquired automatically and the computer and the device are in the same segment, you can select this port type.</p> <p>IP Address(Manual): Use the device's IP Address for the port name.</p> <p>HostName (DNS): Use the device's host name registered in the DNS server for the port name.</p> <p>MS Network: Use the NetBIOS name registered in the device for the port name.</p>
The port Information	<p>The following items are displayed:</p> <ul style="list-style-type: none"> - Port Name (automatically assigned according to the selected port type.) - Printer Model - Host Name or IP Address (automatically assigned according to the selected port type) - Protocol
Finish button	Register the port information to the system and close the Add EpsonNet Print Port Wizard.
Back button	Go back to the device list window.
Cancel button	Close the Add EpsonNet Print Port Wizard.

The new printer port is created in your computer. To install the printer driver, see "Installing the Printer Driver".

Adding a port for a device assigned with a static IP address

1. **For Windows XP:** Click Start and then Printers and Faxes. Under Printer Tasks, click Add a printer to start the Add Printer Wizard.

For Windows 2000: Click Start, point to Settings, and then select Printers. Double-click Add Printer in the Printers folder to start the Add Printer Wizard.

For Windows Server 2003: Click Start and then Printers and Faxes. Double-click Add Printer in the Printers folder to start the Add Printer Wizard.

For Windows NT 4.0: Click Start, point to Settings, and then select Printers. Double-click the Add Printers icon.

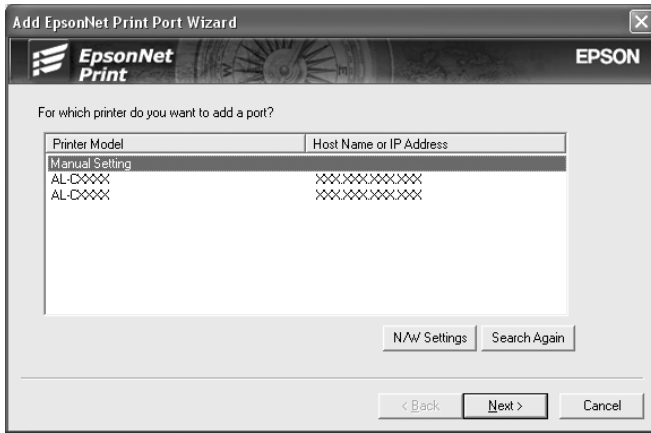
2. Click Next.

3. **For Windows XP/Server 2003:** Click Local printer attached to this computer, clear the Automatically detect and install my Plug and Play printer check box, and then click Next. Select the Create a new port radio button, and then select EpsonNet Print Port from the list. Click Next.

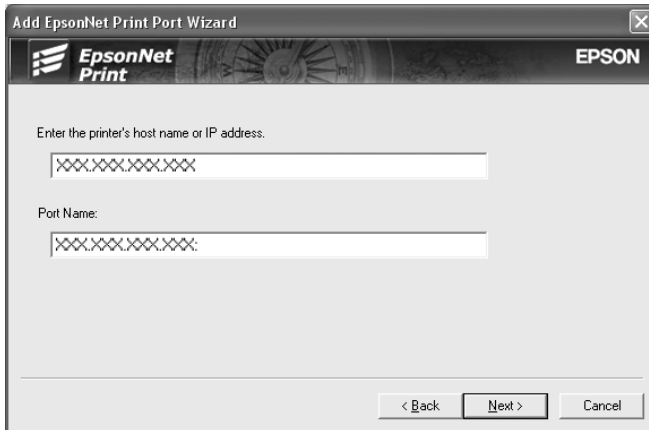
For Windows 2000: Click Local printer, clear the Automatically detect and install my Plug and Play printer check box, and then click Next. Select the Create a new port radio button, and then select EpsonNet Print Port from the list. Click Next.

For Windows NT 4.0: Select the My Computer radio button, and then click Next. Click the Add Port button in the Add Printer wizard dialog box. Select EpsonNet Print Port from the Available Printer Port list, and then click the New Port button.

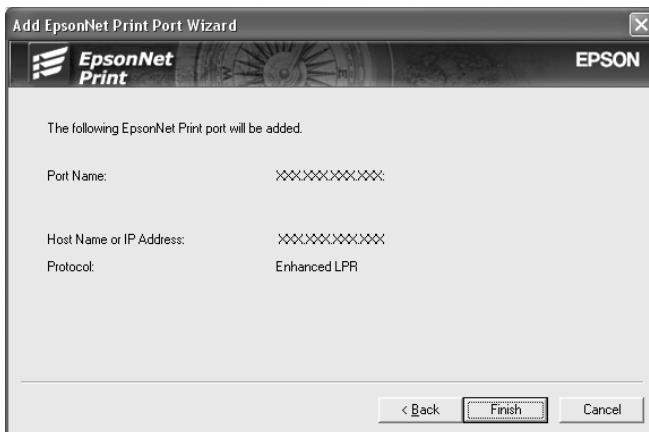
4. Select Manual Setting from the list, and then click Next.



5. Enter the device's name and the port name is automatically entered to the Port Name edit box. Then click Next.



6. Confirm the information about the device's port you want to configure, and then click Finish.



Items	Explanations
The port Information	The following items are displayed. - Port Name - Host Name or IP Address - Protocol
Finish button	Register the port information to the system and close the Add EpsonNet Print Port Wizard.
Back button	Go back to the device list window.
Cancel button	Close the Add EpsonNet Print Port Wizard.

The new printer port is created in your computer. To install the printer driver, see “Installing the Printer Driver”.

Installing the Printer Driver

Install the printer driver that comes with your device.

Note:

Some buttons in these steps may be slightly different depending on your operating system.

1. Insert the Software CD-ROM shipped with the device.
2. Close the EPSON Installation Program screen if it appears.
3. Click the Have Disk button. The Install From Disk dialog box appears.
4. Click Browse.
5. Select the CD-ROM drive for Drives, and double-click the appropriate folder for your operating system. Click OK.
6. Click OK in the Install From Disk dialog box.
7. Select the model name of the device, and then click Next.

Note:

If the Add Printer wizard asks you to select either Keep existing driver or Replace existing driver, be sure to select the Replace existing driver radio button. Click Next.

8. Click Finish and follow the on-screen instructions to complete the setup.

The printer is now ready for peer-to-peer printing. To configure the printer port, see “Configuring the Printer Port”.

For Windows Me/98/95 Users

Follow the steps below to add a port using the Add Printer Wizard.

- ❑ If you want to add a port for the device with its IP address assigned automatically from the DHCP server or router, see “Adding a port for a device assigned with a dynamic IP address”.
- ❑ If you want to add a port for the device with its IP address assigned manually, see “Adding a port for a device assigned with a static IP address”.

Note:

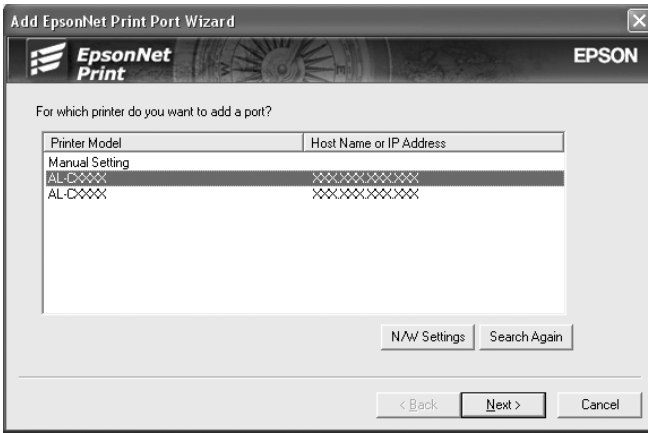
- ❑ *Be sure that the computer is connected to the network and TCP/IP is correctly set.*
- ❑ *Be sure that the driver of the target device is installed on the computer.*
- ❑ *A valid IP address must be assigned to the network interface.*

Adding a port for a device assigned with a dynamic IP address

Install the printer driver before adding a port for the device. See the manual shipped with your device for instructions on how to install the printer driver.

1. Click Start, point to Settings, and then select Printers.
2. Right-click the target device icon, and then select Properties.
3. Click the Details tab, and then click the Add Port button. Select the Other radio button, and then select EpsonNet Print Port. Click OK.

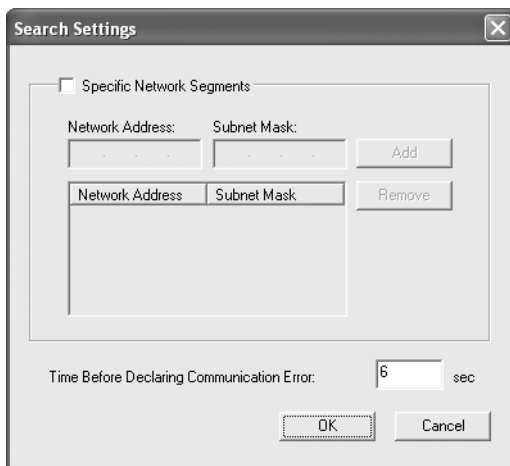
4. Select the target device, and then click Next.



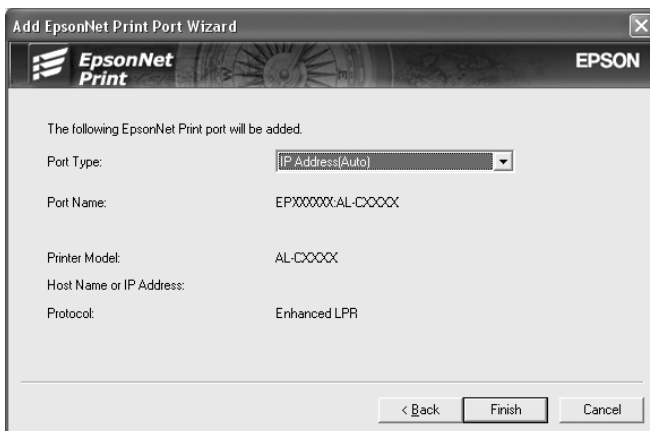
Note:

- ❑ *If the target device is not in the list, click the Search Again button to search the devices using new parameters.*
- ❑ *Each column can be sorted in ascending or descending order by clicking the column header. However, Manual Setting is always displayed on the top of the list regardless of sorting.*

- ❑ *If you want to search devices in other segments, click the N/W Settings button. Select the Specific Network Segments check box, and then enter the network address and subnet mask of the network segment for the search. Then click the Add button. You can also specify Time Before Declaring Communication Error.*



5. Confirm the information about the device's port you want to configure, and then click Finish.



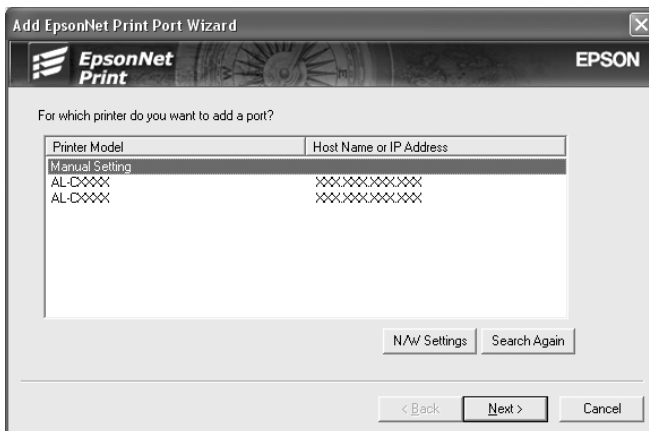
Items	Explanations
Port Type	<p>The following items are listed in the pull-down menu, and you can select the port type you need.</p> <p>IP Address(Auto): Configure the port automatically. If the IP address of the device is acquired automatically and the computer and the device are in the same segment, you can select this port type.</p> <p>IP Address(Manual): Use the device's IP Address for the port name.</p> <p>HostName (DNS): Use the device's host name registered in the DNS server for the port name.</p> <p>MS Network: Use the NetBIOS name registered in the device for the port name.</p>
The port Information	<p>The following items are displayed:</p> <ul style="list-style-type: none"> - Port Name (automatically assigned according to the selected port type) - Printer Model - Host Name or IP Address (automatically assigned according to the selected port type) - Protocol
Finish button	Register the port information to the system and close the Add EpsonNet Print Port Wizard.
Back button	Go back to the device list window.
Cancel button	Close the Add EpsonNet Print Port Wizard.

The printer is now ready for peer-to-peer printing. To configure the printer port, see "Configuring the Printer Port".

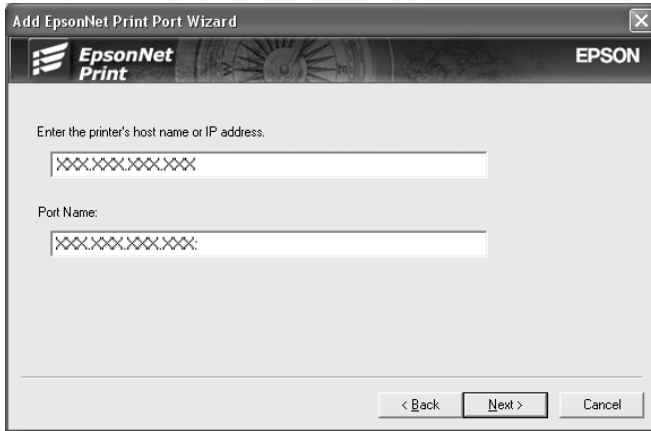
Adding a port for a device assigned with a static IP address

Install the printer driver before adding a port for the device. See the manual shipped with your device for instructions on how to install the printer driver.

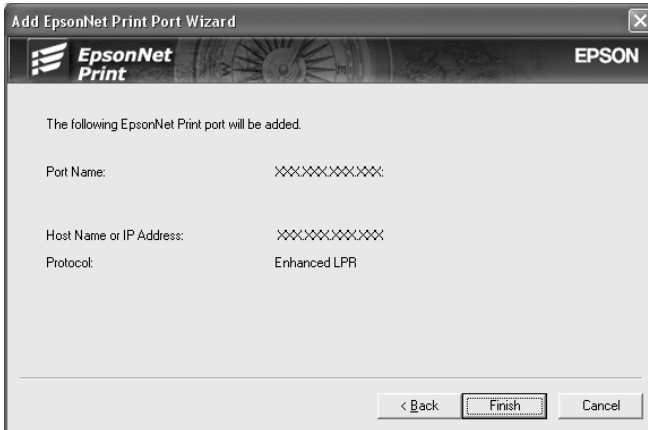
1. Click Start, point to Settings, and then select Printers.
2. Right-click the target device icon, and then select Properties.
3. Click the Details tab, and then click the Add Port button. Select the Other radio button, and then select EpsonNet Print Port. Click OK.
4. Select Manual Setting from the list, and then click Next.



5. Enter the device's name and the port name is automatically entered to the Port Name edit box. Then click Next.



6. Confirm the information about the device's port you want to configure, and then click Finish.



Items	Explanations
The port Information	The following items are displayed: - Port Name - Host Name or IP Address - Protocol
Finish button	Register the port information to the system and close the Add EpsonNet Print Port Wizard.
Back button	Go back to the device list window.
Cancel button	Close the Add EpsonNet Print Port Wizard.

The printer is now ready for peer-to-peer printing. To configure the printer port, see “Configuring the Printer Port”.

Configuring the Printer Port

Follow the steps below to configure the printer port. The printing speed differs depending on your selection.

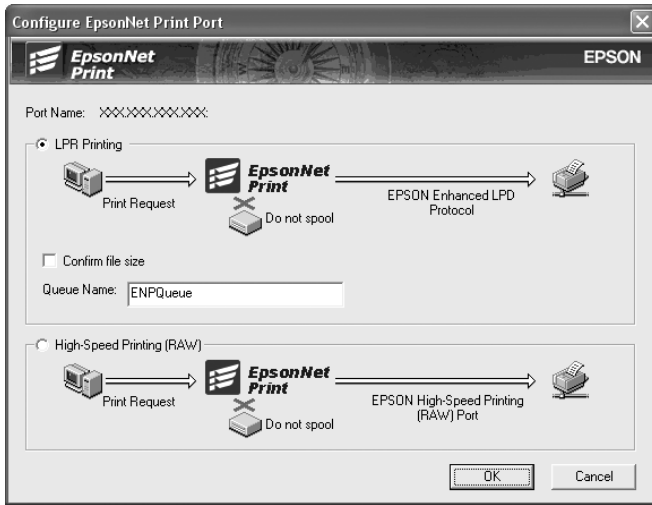
1. **For Windows Me/98/95/2000/NT 4.0:** Click Start, point to Settings, and then select Printers.

For Windows XP/Server 2003: Click Start and then Printers and Faxes.

2. Right-click the target device, and then click Properties.
3. **For Windows Me/98/95:** Click the Details tab, and then click the Port Settings button.

For Windows XP/Server 2003/2000/NT 4.0: Click the Ports tab, and then click the Configure Port button.

4. Make the appropriate settings for the desired port.



LPR enhanced printing:

Select the LPR Printing radio button, and specify the queue name (up to 32 characters). LPR enhanced printing sends a print job to the target network device without spooling all of the print data. LPR enhanced printing is faster than LPR standard printing.

LPR standard printing:

Select the Confirm file size check box, and specify the queue name (up to 32 characters). Print data is spooled by the computer before being sent to the target network device.

Note:

When the print data size exceeds 20 MB, we recommend that you use LPR enhanced printing

High-Speed printing:

Select the High-Speed Printing (RAW) radio button. The Epson high-speed printing port sends a print job to the target network device without spooling all of the print data.

High-Speed printing is faster than the other two printing methods.

5. Click OK.

If you select the High-Speed Printing (RAW) radio button and if the printer does not support High-Speed printing, an error message appears. Follow the message to remedy the problem.

EpsonNet Internet Print

About EpsonNet Internet Print

EpsonNet Internet Print is a utility program that supports printing across the Internet using Internet Printing Protocol (IPP). Since the network interface supports IPP, Internet printing is possible using this utility. You can print or make printer settings from Windows 98/95/NT 4.0 systems that can access the Internet. You can also print via a proxy server using this utility.

Before using the EpsonNet Internet Print utility, be sure to read the Readme.txt file found in the EpsonNet Internet Print folder. This file contains the latest information on the EpsonNet Internet Print.

Note:

- ❑ *EPSON Status Monitor is a utility program that monitors your device and gives you information about its current status. Because this utility does not support IPP, devices connected to the Internet cannot be monitored with EPSON Status Monitor. If you use EpsonNet Internet Print on a computer which has EPSON Status Monitor installed, a communication error message may appear when you view printer properties. To avoid this, click the Optional Settings tab in the target printer's properties dialog box and click the Update the Printer Option Information Manually radio button.*
- ❑ *For Windows XP/Me/2000, use the OS standard IPP client for the Internet printing.*

System Requirements

Operating systems

- ❑ Windows 98, Windows 95, or Windows NT 4.0 Server and Workstation

- ❑ An Intel x86 series or compatible processor

Supported products

- ❑ Epson network interfaces that support IPP (EpsonNet Internet Print comes with Epson network interface products that support IPP)

Installing EpsonNet Internet Print

Follow the steps below to install EpsonNet Internet Print.

1. Insert the Software CD-ROM in the CD-ROM drive.
2. The Software Installation screen opens automatically.

If the Software Installation screen does not appear, double-click EPSetup.exe on the CD-ROM.

3. Make sure that all applications are closed, and then click the Next button.
4. Read the license agreement, and then click the Agree button. If necessary, select the model of your printer.
5. Select Install Network Utility.
6. Click the icon located next to EpsonNet Internet Print.

7. Follow the on-screen instructions to complete the installation.
8. Restart the computer after installation is complete.

Setting Up Your Device Using EpsonNet Internet Print

EpsonNet Internet Print supports printing across the Internet using Internet Printing Protocol. Follow the steps below to set up the device.

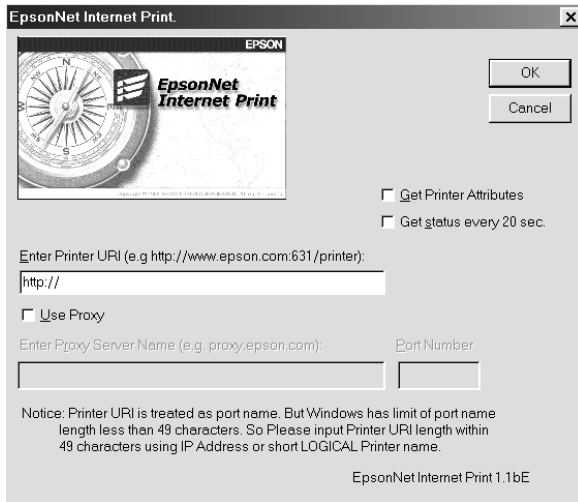
Note:

Before following the steps below, you must make the appropriate IPP settings in EpsonNet Config. See the EpsonNet Config User's Guide or "IPP" for instructions on setting up IPP. In the steps below, you will be asked for the IPP URL you set in the IPP setting screen in EpsonNet Config.

Windows 98/95

1. Make sure that TCP/IP is correctly installed and setup in the computer and a valid IP address is set for the computer and device.
2. Make sure that the IPP settings in EpsonNet Config are correct. See the *EpsonNet Config User's Guide* or "IPP" for instructions on settings for IPP.
3. To start EpsonNet Internet Print, click Start, point to Programs and then EpsonNet Internet Print, then click Add EpsonNet Internet Print Port.

4. The following screen appears. The address you set here becomes the port for Internet printing. Make the settings described below.



Enter Printer URI:

Enter the target device's URI up to 49 characters. The URI you set here must be same as the IPP URL you have set for the IPP setting screen in EpsonNet Config. Do not use the following characters; | \ [] { } < > # " `

Format: **http://**IP address of device:**631**/printer name

Example: **http://192.168.100.201:631/EPSON_IPP_Printer**

Use Proxy:

When using the proxy server, select this box and enter the Proxy Server Name and Port Number. All communication is done via the proxy server.

Enter Proxy Server Name:

Enter the proxy server name or the IP address of the proxy server. You can enter up to 256 characters, but only 127 characters are valid. Do not use the following characters; | \ [] { } < > # " `

Port Number:

Enter the port number of the proxy server (from 0 to 65535).

Get Printer Attributes:

When you select this box and click OK, EpsonNet Internet Print communicates with the device and acquires information, so it may take a few minutes before a message appears. This setting is available only when creating a port.

Get status every 20 sec.:

Select this box when you want to receive printer status updates at regular intervals (every 5 seconds during printing and every 20 seconds when idle). If you select this box, a message will appear if an error occurs during printing. You can also check the printer status by double-clicking the printer icon.

OK button:

Saves the settings.

Cancel button:

Cancels any changes.

Note:

- The settings you make above can be changed from the printer driver. In the printer Properties dialog box, click the Details tab, and click the Port Settings button to change the settings.*
- Be aware that when connecting to the Internet using a dial-up router and selecting the Get status every 20 sec check box, you may be charged for the extra line connection.*
- When you check the Get Printer Attributes check box and click OK, an error message may appear. Be sure that the device power is on, and the device is correctly connected on the network.*

- ❑ *If the device power is off or there is a problem on the network, the Get status every 20 sec check box is automatically cleared. If this happens, make sure that the device power is on and the device is correctly connected on the network, and then select the Get status every 20 sec check box again.*

5. Click OK to save settings.
6. When a message appears saying the settings are correctly configured, click OK to start the Add Printer Wizard. Click Next.

Note:

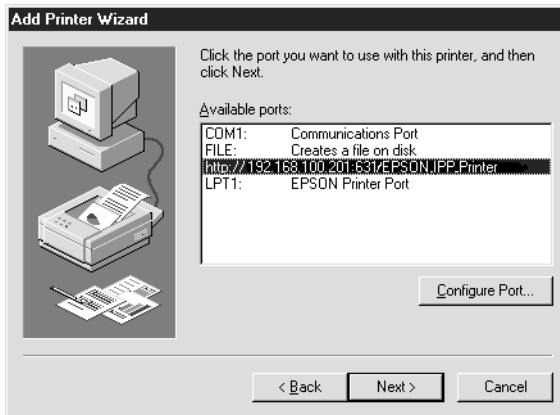
If you click Cancel and then later want to add the device, start the Add Printer Wizard and follow the steps below.

7. Click the Local printer radio button and click Next.
8. Select the printer driver and click Next.

If the following dialog box appears, select Replace existing driver and click Next.



9. Select the port added by EpsonNet Internet Print in the previous section. Click Next.



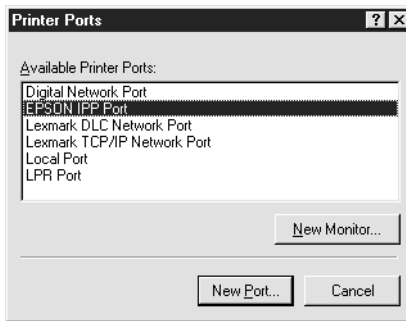
10. Follow the on-screen instructions to install the printer driver.
11. If a dialog box instructing you to install EPSON Status Monitor 2 or EPSON Status Monitor 3 appears, click Cancel and terminate the installation.

Note:

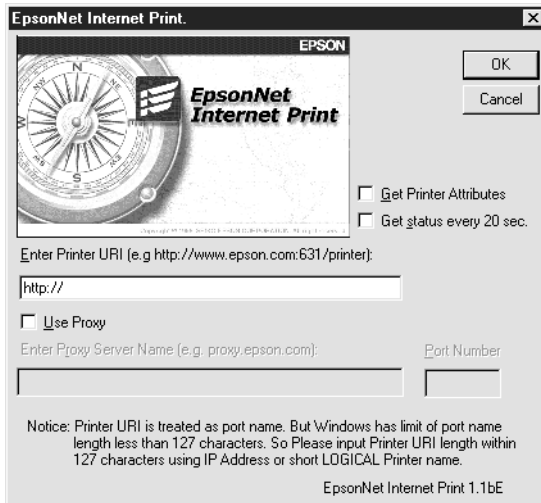
- ❑ *If you delete the port which you set above from the Details tab of the printer properties, you cannot reuse the deleted port name as a new port name (the printer URI) until you restart the computer.*
- ❑ *If you are using EPSON Status Monitor 3 and printing with EpsonNet Internet Print, the message "A communication error has occurred." appears. You can get rid of this message by clearing the Monitor the Printing Status check box in the Utility menu of the printer properties.*

Windows NT 4.0

1. Be sure that TCP/IP is correctly installed and setup in the computer and a valid IP address is set for the computer and device.
2. Make sure that the IPP settings in EpsonNet Config are correct. See the *EpsonNet Config User's Guide* or "IPP" for instructions on settings for IPP.
3. Click Start, point to Settings, and then select Printers.
4. Double-click the Add Printer icon and click Next.
5. Click the My Computer radio button and click Next.
6. Click the Add Port button, and select EPSON IPP Port from the list. Then click the New Port button.



7. The following screen appears. The address you set here becomes the port for Internet printing. Make the settings described below.



Enter Printer URI:

Enter the target device's URI (up to 127 characters). The URI you set here must be the same as the IPP URL you set for the IPP configuration in EpsonNet Config. Do not use the following characters; | \ [] { } < > # " `

Format: **http://**IP address of device:**631**/printer name
Example: **http://**192.168.100.201:**631**/EPSON_IPP_Printer

Use Proxy:

When using a proxy server, select this box and enter the Proxy Server Name and Port Number. All communication is done via the proxy server.

Enter Proxy Server Name:

Enter the proxy server name or the IP address of the proxy server (up to 256 characters). Do not use the following characters; | \ [] { } < > # " `

Port Number:

Enter the port number of the proxy server (from 0 to 65535).

Get Printer Attributes:

When you select this box and click OK, EpsonNet Internet Print communicates with the device and acquires information, so it may take a few minutes before a message appears. This setting is available only when creating a port.

Get status every 20 sec.:

Select this box when you want to receive printer status updates at regular intervals (every 5 seconds during printing and every 20 seconds when idle). If you select this box, a message will appear if an error occurs during printing. You can also check the printer status by double-clicking the printer icon.

OK button:

Saves the settings.

Cancel button:

Cancels any changes.

Note:

- The settings can be changed after setting up the device. In the printer Properties dialog box, click the Ports tab, and click the Configure Port button to change the settings.*
- Be aware that if you connect to the Internet using a dial-up router and select the Get status every 20 sec check box, you may be charged for the extra line connection.*
- When you select the Get Printer Attributes check box and click OK, an error message may appear. Be sure that the device power is on, and the device is connected to the network.*

- ❑ *If the device power is off or there is a problem in the network, the Get status every 20 sec check box is automatically cleared. If this happens, make sure that the device power is on and the device is correctly connected on the network, and then select the Get status every 20 sec check box again.*

8. Click OK to save the settings.
9. Select the printer driver, and follow the on-screen instructions to install the printer driver.

Note:

When you are using EPSON Status Monitor 3 and printing from EpsonNet Internet Print, the message "A communication error has occurred." appears. To clear this message, right-click the printer icon, select Document Defaults, and select the Utility tab. Then select the Monitor the Printing Status check box.

Status Alert Window

The EpsonNet Internet Print utility updates the status of the IPP printer if you have selected the Get status every 20 sec check box in the EpsonNet Internet Print dialog box.

The status alert window appears when the device is out of paper, toner, or ink, if paper is jammed, the cover is open, or when the device is offline.

The EpsonNet Internet Print utility checks the printer status every 5 seconds during printing and every 20 seconds when idle. If you do not want to check the printer status, clear the Get status every 20 sec check box in the EpsonNet Internet Print dialog box.

EpsonNet WebManager

About EpsonNet WebManager

EpsonNet WebManager is an application designed to manage network devices. It allows network administrators to easily control network devices such as network printers, interface cards, and network adapters attached to a printer. EpsonNet WebManager offers the following features:

- ❑ It supports Windows, Macintosh, and UNIX platforms to give network administrators flexibility in managing network devices.
- ❑ It allows you to search and monitor network devices, and make settings for network devices.
- ❑ It offers a Group Management function that helps you manage devices as a group.

Note:

- ❑ *Before installing and using EpsonNet WebManager, be sure to read the Readme.txt file. This file contains the latest information on EpsonNet WebManager.*
- ❑ *The term “device” refers to a printer, interface card, or network adapter.*

System Requirements

Note:

- ❑ *Before using EpsonNet WebManager, the computer and other devices must be properly connected to the network.*

- ❑ *Since EpsonNet WebManager runs on a Web browser, you must install TCP/IP and a Web browser first. See the Readme.txt file for supported browsers.*

EpsonNet WebManager server operating systems

EpsonNet WebManager server is a computer with EpsonNet WebManager installed.

Operating system	Windows Server 2003 Windows 2000 Server/Advanced Server (with Service Pack 3 or higher) Windows NT 4.0 Server/Terminal Server Edition
Operating system for operational check only	Windows XP Home Edition/Professional Windows 2000 Professional (with Service Pack 3 or higher) Windows NT 4.0 Workstation (with Service Pack 6 or higher)
System	Pentium 300 MHz or better recommended
Memory	256 MB
Hard disk space	100 MB

EpsonNet WebManager client operating systems

You can access the EpsonNet WebManager server from the following operating systems through a browser.

- ❑ Windows XP/Me/98/2000/Server 2003/NT 4.0
- ❑ Macintosh
- ❑ UNIX (see the Readme.txt file for supported UNIX systems)
- ❑ Monitor: 1024 × 768 or higher resolution VGA monitor with support for 65535 or more display colors

EpsonNet WebManager Functions

EpsonNet WebManager provides you with the following functions:

- ❑ **Device list function**
Searches for devices on the network and displays a device list with current status.
- ❑ **Device details function**
You can make or change the printer settings through EpsonNet WebManager. The setting items in the Device details function will differ depending on the device.
- ❑ **Network settings function**
You can make or change the network interface settings through EpsonNet WebManager.
- ❑ **Group management function**
Groups can help you manage network devices more effectively.

Note:

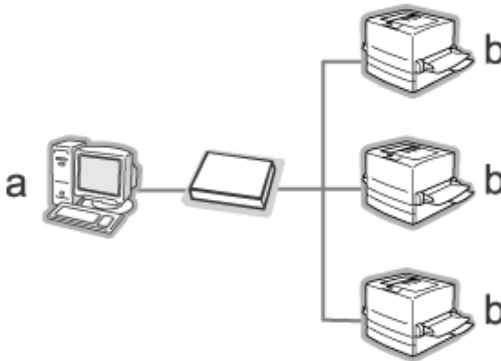
- ❑ *Some functions of EpsonNet WebManager may not be available depending on the combination of network devices. See the Introduction of the EpsonNet WebManager Reference Guide for detailed information.*
- ❑ *When using EpsonNet WebManager with Internet Explorer in Mac OS, the Printer Layout window, Error Notification window, and Device Details window may not be available.*

EpsonNet WebManager Operating Structure

EpsonNet WebManager must be installed in the computer that functions as the network server. You can select either of the two methods described below to use EpsonNet WebManager.

EpsonNet WebManager and a Web browser running on the same PC

No special server is required. Just install EpsonNet WebManager and a Web browser on the same computer that functions as a server. All administration is possible from the network administrator's Windows XP/2000/Server 2003/NT 4.0 computer.

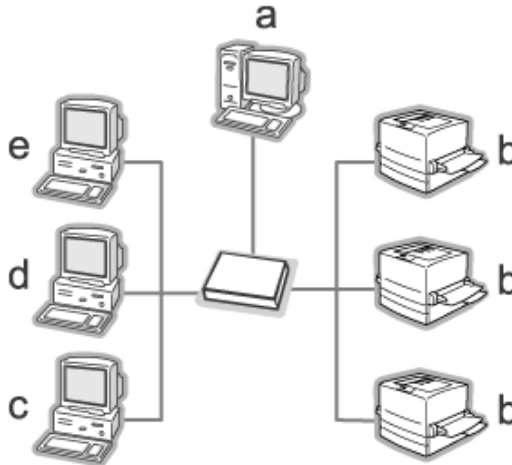


a. EpsonNet WebManager server

b. Epson device with built-in network interface

EpsonNet WebManager and a Web browser running on different PCs

Install EpsonNet WebManager in the server, and install a Web browser in the client computers. Run the Web browser on a client computer to access EpsonNet WebManager on the server. Multi-platform network administration is possible from Windows, Macintosh, and UNIX platforms through the browser.



- a. EpsonNet WebManager server
- b. Epson device with built-in network interface
- c. Client computer running Windows
- d. Client computer running Macintosh
- e. Client computer running UNIX

Installing EpsonNet WebManager

Follow the steps below to install EpsonNet WebManager.

1. Insert the Software CD-ROM in the CD-ROM drive.
2. The Software Installation screen opens automatically.

If the Software Installation screen does not appear, double-click EPSetup.exe on the CD-ROM.

3. Make sure that all applications are closed, and then click the Next button.
4. Read the license agreement, and then click the Agree button. If necessary, select the model of your printer.
5. Select Install Network Utility.
6. Click the icon located next to EpsonNet WebManager.
7. Follow the on-screen instructions to complete the installation.

Note:

You do not need to install EpsonNet WebManager in the client computer. Just announce the IP address or host name of the server to any clients who use EpsonNet WebManager from a client computer.

Starting EpsonNet WebManager

Be sure that TCP/IP is installed, and the IP address or host name is set for the computer. (Register the host name in the hosts file in the Windows directory.)

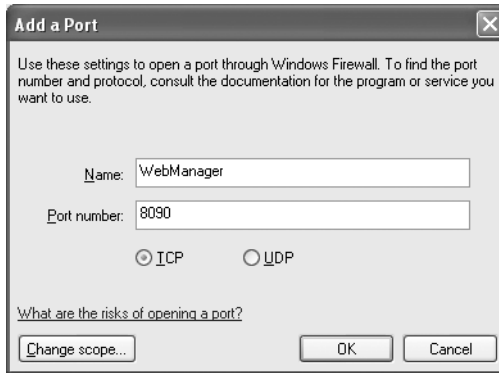
From the server

To start EpsonNet WebManager, click Start, point to All Programs (for Windows XP/Server 2003 users) or Programs (for Windows 2000/NT 4.0 users), and then select EpsonNet WebManager. Click EpsonNet WebManager.

Note for Windows XP Service Pack 2 users:

If EpsonNet WebManager is installed on the computer running Windows XP Service Pack 2, make the following settings; otherwise the client computers cannot access EpsonNet WebManager.

1. Click Start, point to Control Panel, and then select Security Center. Click Windows Firewall.
2. Click the Exceptions tab, and then click the Add Port button.
3. Enter the name of the port in the Name text box, and 8090 in the Port number text box, and then select the TCP radio button.



Note:

If necessary, click the Change scope button, and then specify the IP addresses of the client computers for which the port is unblocked.

4. Click OK.

From the client

Run the Web browser and then type the IP address (or the host name) of the server and default port number.

- ❑ Format:
http://IP address or host name of server:8090/wm
- ❑ Example:
http://192.168.100.201:8090/wm

Opening the Online Guide

After starting EpsonNet WebManager, be sure to read the EpsonNet WebManager's online reference guide. It provides important information and instructions on using EpsonNet WebManager.

You can access the online guide by using any of the following methods:

- ❑ Run EpsonNet WebManager. From the Help menu, select Online Guide.
- ❑ Click the question mark button on the current screen so that a help screen appears describing the functions on that page.
- ❑ Click Start, point to All Programs (for Windows XP/Server 2003 users) or Programs (for Windows 2000/NT 4.0 users), and then select EpsonNet WebManager. Click Online Guide.

EpsonNet SetupManager

About EpsonNet SetupManager

EpsonNet SetupManager is a utility that provides a simple device installation and configuration tool for network administrators, and an easy network device installation process for clients. EpsonNet SetupManager installs the printer driver for devices newly connected to the network, and helps network administrators and clients efficiently install and configure new network devices on Windows operating systems running TCP/IP.

EpsonNet SetupManager provides the following functions.

- ❑ Installs the printer driver easily.
- ❑ Installs the port monitor (EpsonNet Print) automatically.
- ❑ Creates a printer port.
- ❑ Creates a shortcut (an icon that executes the script file on the server) or a package (which contains all files needed for the installation) for automatic printer driver installation.
- ❑ Outputs the result of the printer driver installation using the script file.
- ❑ Edits more than one script file at a time.
- ❑ Registers unconnected devices in a script file.
- ❑ Installs utilities such as EPSON Status Monitor 3 and EPSON Scan that support automatic installation.

System Requirements

The following table lists the system requirements of EpsonNet SetupManager.

Operating system	Windows XP Home Edition/Professional Windows Me Windows 2000 Professional (with Service Pack 4 or higher) Windows 98 Second Edition Windows 95 OSR2 (with Internet Explorer version 5.0 or higher) Windows Server 2003 Windows 2000 Advanced Server Windows NT Workstation 4.0 (with Service Pack 6 or higher)
Protocol	TCP/IP
Display	800 × 600 pixels, HighColor (16 bits)

Note:

- ❑ *If you are using Windows 95, you cannot create a script file. You can only run a script file.*
- ❑ *If you are using Windows 2000 Advanced Server or Windows Server 2003, you can create a script file, but you cannot run it.*
- ❑ *The user must have administrator privileges to execute the program when the operating system is Windows XP (Home/Professional), Windows Server 2003, Windows 2000 (Professional/Advanced Server), or Windows NT 4.0.*
- ❑ *Read the Readme.txt file for information on the supported printers and network interfaces. This file comes with EpsonNet SetupManager.*

- ❑ *You cannot use EpsonNet SetupManager if more than one network adapter are installed on the computer and connected to different network segments.*

Print service

Operating systems	Port monitor services
Windows XP/2000	EpsonNet Print or Standard TCP/IP Port
Windows Me	EpsonNet Print or Add-Ons IPP Port Monitor
Windows 98 Second Edition Windows 95	EpsonNet Print
Windows NT 4.0	EpsonNet Print or LPR

Note:

- ❑ *If you are using Windows Me/98/95 and EpsonNet Print is not installed, EpsonNet Print is automatically installed. To use EpsonNet Print on Windows 95, Microsoft Internet Explorer 5.0 must be installed on the computer.*
- ❑ *If you are using Windows NT 4.0 as well as LPR printing, we recommend that you install the LPR print service on the computer. If the LPR print service is not installed, EpsonNet Print is automatically installed.*
- ❑ *If you are using Windows Me, IPP Port Monitor is included in the Add-Ons folder on the Windows Me CD-ROM.*

When using EPSON Status Monitor

For some of the devices, EPSON Status Monitor is automatically installed when you install the printer driver using EpsonNet SetupManager. See the Readme.txt file for names of devices where EPSON Status Monitor is installed automatically. If EPSON Status Monitor is not installed automatically, install it manually. See the guide shipped with your device.

Installing EpsonNet SetupManager

Follow the steps below to install EpsonNet SetupManager on your computer.

1. Insert the Software CD-ROM in the CD-ROM drive.
2. The Software Installation screen opens automatically.

If the Software Installation screen does not appear, double-click EPSetup.exe on the CD-ROM.

3. Make sure that all applications are closed, and then click the Next button.
4. Read the license agreement, and then click the Agree button. If necessary, select the model of your printer.
5. Select Install Network Utility.
6. Click the icon located next to EpsonNet SetupManager.
7. Follow the on-screen instructions to complete the installation.

Note for Windows XP Service Pack 2 users:

If the Windows Security Alert dialog box appears after you start EpsonNet SetupManager, click the Unblock button.

Accessing the User's Guide for EpsonNet SetupManager

The *EpsonNet SetupManager User's Guide* contains detailed information on EpsonNet SetupManager. Follow the steps below to access the *EpsonNet SetupManager User's Guide*.

Click Start, point to All Programs (for Windows XP/Server 2003 users) or Programs (for Windows Me/98/2000/NT 4.0 users), and then select EpsonNet. Click EpsonNet SetupManager, and then select User's Guide to open it.

The *EpsonNet SetupManager User's Guide* appears. You can get information on using EpsonNet SetupManager.

Tips for Administrator

Settings for NetWare Users

Introduction to NetWare Settings

This chapter explains how to configure the network interface for NetWare. First, you need to set up the device in a NetWare environment, and then configure the network interface using EpsonNet Config.

Supported systems

Server environment

NetWare 3.1/3.11/3.12/3.2 (Bindery)
NetWare 4.1/4.11/4.2 (NDS, Bindery emulation)
IntranetWare (NDS, Bindery emulation)
NetWare 5.0/5.1 (NDS, NDPS)
NetWare 6.0 (NDS, NDPS)

Client environment

The client environment must be supported by NetWare. The clients are able to use the printer driver mounted on the network interface.

The following Novell Client is supported.

- For Windows 98/95:
Novell Client 3.3 or later for Windows 98/95

- ❑ For Windows 2000/NT 4.0:
Novell Client 4.8 or later for Windows 2000/NT 4.0
- ❑ For Windows XP:
Novell Client 4.9 or later for Windows XP

About modes

You can choose either the Print Server, Remote Printer, or Standby mode. We recommend that you use the Print Server mode unless the number of users exceeds the limit.

Features of these modes are described below.

Print Server mode (NDS/Bindery Print Server):

- ❑ High-speed printing with direct printing
- ❑ Uses the NetWare user account
- ❑ Can connect up to 8 file servers simultaneously
- ❑ Can register up to 32 print queues

Remote Printer mode:

- ❑ A NetWare user account is not required.
- ❑ A network interface is needed to control the remote printer.
- ❑ Can attach up to 16 printers for NetWare 3.x, and up to 255 for NetWare 4.x or later.

Note:

When you turn on the device, the user account is temporarily accessed in the Remote Printer mode. If there is no user account available, turn on the device before connecting the client to the network.

Standby mode (factory default mode):

The Standby mode is the default mode. This mode disables all NetWare related functions. Use the Standby mode when you are not using the network interface in a NetWare environment.

Instructions for Using NetWare

Printing a text file

When you print a text file using the NPRINT command of NetWare or DOS, redirection, misconversion or a gap in characters may occur depending on the client environment.

IPX routing protocol “NLSP”

It is possible to set the IPX routing protocol “NLSP” from NetWare 4.x or later; however, the network interface does not support NLSP. RIP/SAP controls the communication.

You can select the routing protocol from a) NLSP with RIP/SAP Compatibility, or b) RIP/SAP Only. If you remove the bind of RIP or SAP when NLSP with RIP/SAP Compatibility is specified, the network interface then cannot communicate with the file server and NDS. (See “Protocols” and “Bindings” in NetWare’s INETCFG utility.)

Bindery and NDS

- ❑ You can check the bindery context path from the server console by using the SET BINDERY CONTEXT command.
- ❑ If the bindery context path has not been set, or if you want to use the printing environment of another context from a non-NDS client, you need to specify the context for the bindery context. Use the SET BINDERY CONTEXT command to set the context in the AUTOEXEC.NCF file.

- ❑ You cannot use the bindery print server mode with EpsonNet Config if you are running Novell Client for Windows 95/98 version 3.00 or Novell Client for Windows NT version 4.50. To configure the network interface for bindery mode, use Novell IntranetWare Client or EpsonNet Config with Web Browser.

See your NetWare documentation for more information.

Time required to recognize the network interface

It takes up to two minutes for the NetWare server to recognize the network interface, after the device is turned on. During this start-up time, the status sheet does not show the correct information.

Frame type

The same frame type should be used for the NetWare server and IPX router on the same network. If more than one frame type is used on the same network, bind all the frame types to the NetWare servers and IPX routers.

For NetWare 5.x

The IPX protocol must be installed (bound) on the NetWare 5.x server.

About modes

If the mode you have logged in is different from the mode you set for the network interface, a message appears when you try to configure the network interface for NetWare. If you do not want to change the current settings, click **CANCEL** and log in again using the same mode set for the network interface.

Using Bindery Print Server (NetWare 3.x/4.x)

This section contains instructions on using the network interface in the Print Server mode on NetWare 3.x/4.x/IntranetWare with Bindery emulation.

Note:

The network interface in the Print Server mode of NetWare 3.x does not allow you to use the Print Server status display control with PCONSOLE.

1. Turn on the device.
2. From any NetWare client, log in to the target NetWare server with supervisor privileges. You must log in with the bindery connection.
3. Configure the network interface using EpsonNet Config. See the *EpsonNet Config User's Guide* for details.

If NetWare objects are already created, you can also use EpsonNet Config with Web Browser. See "NetWare" for details.

Using NDS Print Server (NetWare 4.x/5.x/6.0)

This section contains instructions for using the network interface in the Print Server mode on NetWare 4.x, IntranetWare, NetWare 5.x, or NetWare 6.0 with NDS mode.

1. Turn on the device.
2. From any NetWare client, log in to the target context of the NDS tree as an ADMIN.

3. Configure the network interface using EpsonNet Config. See the *EpsonNet Config User's Guide* for details.

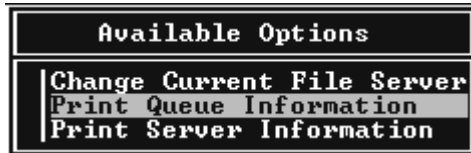
If NetWare objects are already created, you can also use EpsonNet Config with Web Browser. See "NetWare" for details.

Using Remote Printer Mode (NetWare 3.x)

For NetWare 3.x users, follow the steps below to make the printer environment with PCONSOLE.

Creating print queues in a file server

1. From any NetWare client, log in to the network with supervisor privileges.
2. Run PCONSOLE. From the Available Options screen, select Print Queue Information and press Enter.



3. Press the Insert key on your keyboard and enter the print queue name. Press Enter.

Note:

Since your clients need the print queue name you set here when they use the printer, announce the print queue name to your clients.

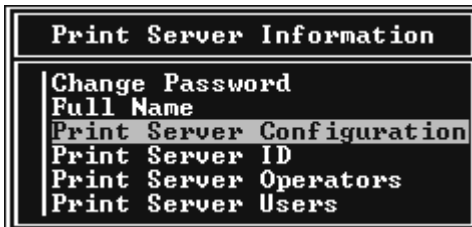
4. From the Print Queue list, select the print queue name that you just entered and press Enter. From the Print Queue Information list, select Queue Users and press Enter. Next, select EVERYONE from the list. If EVERYONE is not in the list, press Insert and select EVERYONE from the queue user list.

Creating a print server

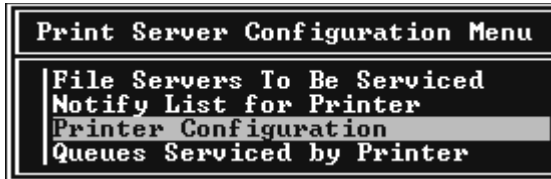
1. From the Available Options screen, select Print Server Information and press Enter.



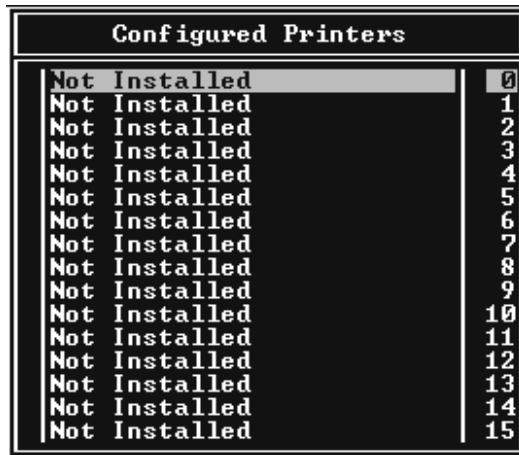
2. Press the Insert key on your keyboard and type the print server name. Press Enter. It is a good idea to write down the print server name for later use.
3. From the Print Server list, select the print server name that you just typed and press Enter. From the Print Server Information list, select Print Server Configuration and press Enter.



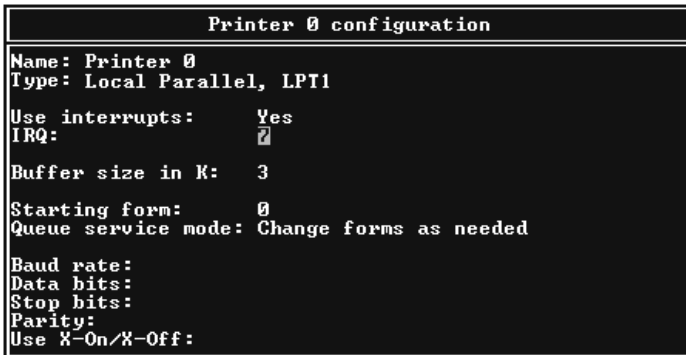
4. Select Printer Configuration from the Print Server Configuration Menu and press Enter.



5. From the Configured Printers list, select Not Installed (port number = 0) and press Enter.



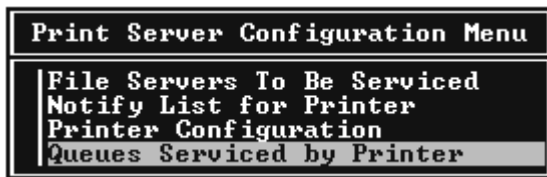
- From the Printer configuration screen, type the printer name. Highlight Type and press Enter. Select Remote Parallel, LPT1 for Remote Printer mode.



Note:

Be sure to select Remote Parallel, LPT1 for Remote Printer mode.

- Press Esc; then press Enter to save your changes.
- Press Esc.
- Select Queues Serviced by Printer from the Print Server Configuration menu and press Enter.



- Select the printer that you want to use from the Defined Printers list and press Enter.
- Press the Insert key and assign a queue to the print server port from the Available Queues list.

12. Specify a priority level between 1 to 10. One is top priority.
13. Press Esc to exit PCONSOLE.

Configuring for NetWare using EpsonNet Config

1. Turn on the device.
2. Load the print server from the file server's system console which the print queue volume is set.
>LOAD PSERVER print server name you set using PCONSOLE
3. Configure the network interface using EpsonNet Config. See the *EpsonNet Config User's Guide* for details.

If NetWare objects are already created, you can also use EpsonNet Config with Web Browser. See "NetWare" for details.

Using Bindery Remote Printer Mode (NetWare 4.x)

Follow the steps below to make the printer environment on NetWare 4.x and IntranetWare with Bindery emulation.

Note:

- Assign Trusteeships for users if necessary.*
- Be sure to use PCONSOLE to set the print queue and print server instead of using NWAdmin.*

Creating objects

1. From any NetWare client, log in to the server as an ADMIN. Make sure to log in with Bindery connection.

Note:

If the client using for this setting has been logged in with NDS mode, press F4 key while PCONSOLE is starting to switch to the bindery mode.

2. Run PCONSOLE. From the Available Options screen, select Print Queues and press Enter. Press Insert and type the print queue name. Press Enter.

Note:

Since your clients need the print queue name you set here when they use the printer, announce the print queue name to your clients.

3. From the Print Queue list, select the print queue name that you just entered and press Enter. From the Print Queue Information list, select Queue Users and press Enter. Next, select EVERYONE from the list. If EVERYONE is not in the list, press Insert and select EVERYONE from the queue user list.
4. From the Available Options screen, select Print Servers and press Enter. Press Insert and type the print server name. Press Enter.
5. Press Esc to exit PCONSOLE, and log out from the server.
6. Log in to the server as an ADMIN. Be sure to log in with NDS connection.
7. Start NWAdmin.
8. To create the Printer Object, click the container specified as the Bindery context and select Create from the Object menu, then Printer. Type the printer name and click Create.
9. To assign the print queue, double-click the Printer object icon (created in step 8). The Printer dialog box appears.
10. Click Assignments and then click Add. From the print queue list, select the queue (created in step 2) and click OK.

11. Click Configuration in the Printer dialog box, and select Parallel from the Printer type pull-down menu.
12. Click Communication. The Parallel Communication dialog box appears.
13. Select LPT1 for Port; check Polled for Interrupts; and check Manual load (Remote from Print Server) for Connection type, then click OK.
14. Click OK in the Printer dialog box.
15. To assign the printer, double-click the Print Server object icon (created in step 4). The Print Server dialog box appears.
16. Click Assignments and then click Add. From the printer object list, select the printer object (created in step 8) and click OK.
17. In the Print Server dialog box, select the assigned printer from the printer object list, and click the Printer Number button to set the printer number from 0 to 15, then click OK.
18. To confirm the objects you have assigned, double-click the Print Server object icon. Click Print Layout, and check that the print server, printer, and print queue are connected.

Configuring for NetWare using EpsonNet Config

1. Turn on the device.
2. Load the print server from the file server's system console which the print queue volume is set.
>LOAD PSERVER print server name you set using
PCONSOLE
3. Configure the network interface using EpsonNet Config. See the *EpsonNet Config User's Guide* for details.

If NetWare objects are already created, you can also use EpsonNet Config with Web Browser. See “NetWare” for details.

Using NDS Remote Printer Mode (NetWare 4.x/5.x/6.0)

Follow the steps below to make the printer environment using NWAdmin under NetWare 4.x, IntranetWare, NetWare 5.x, or NetWare 6.0 with NDS mode.

Creating objects

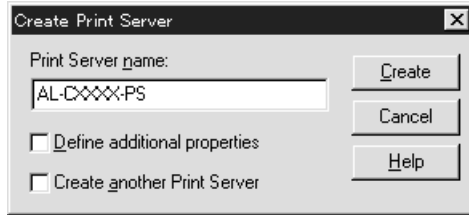
1. From any NetWare client, log in to the target context of the NDS tree as an ADMIN.
2. Run the Administrator tool (NWAdmin).
3. Create a printer:

Click the directory context icon, and select Create from the Object menu, then Printer. Type the Printer name and click Create.



4. Create a print server:

Click the directory context icon, and select Create from the Object menu, then Print Server. Type the Print Server name and click Create.

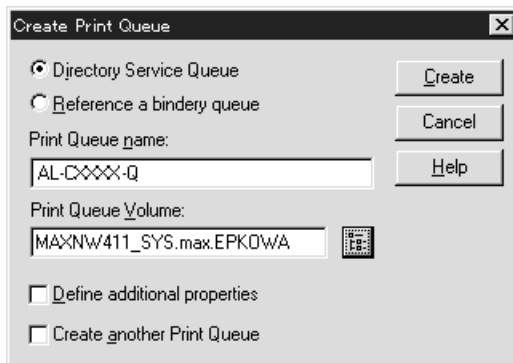


5. Create a print queue:

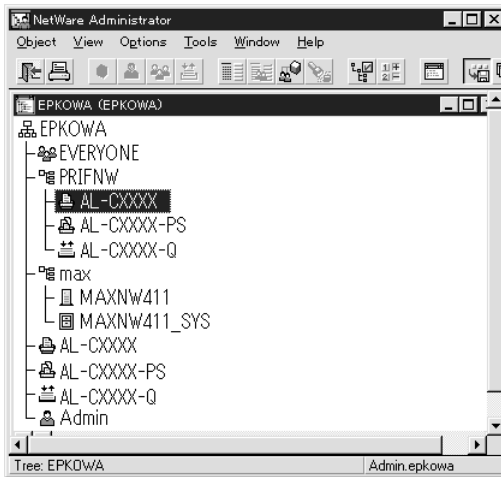
Click the directory context icon, and select Create from the Object menu, then Print Queue. Type the Print Queue name and select the Print Queue Volume, then click Create. Double-click the print queue object, and register the user.

Note:

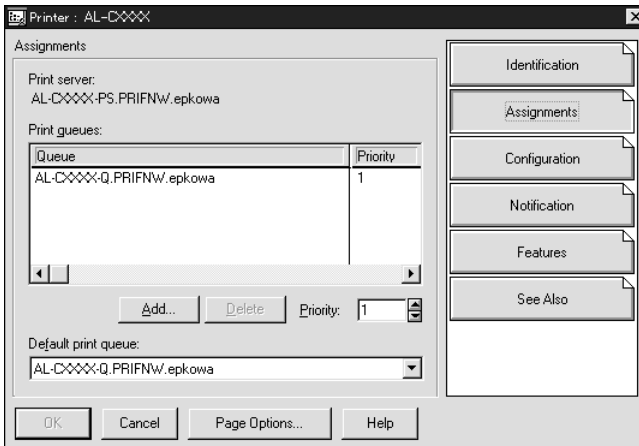
Since your clients need the print queue name you set here when they use the printer, announce the print queue name to your clients.



6. Double-click the Printer Object icon in the NetWare Administrator screen.

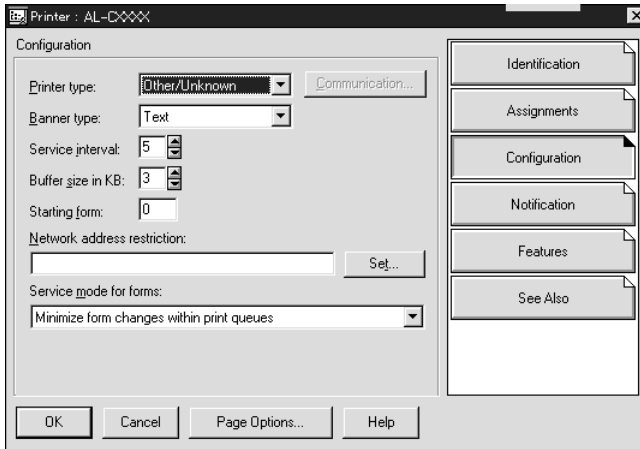


7. In the Printer dialog box appears, click Assignments and then click Add.

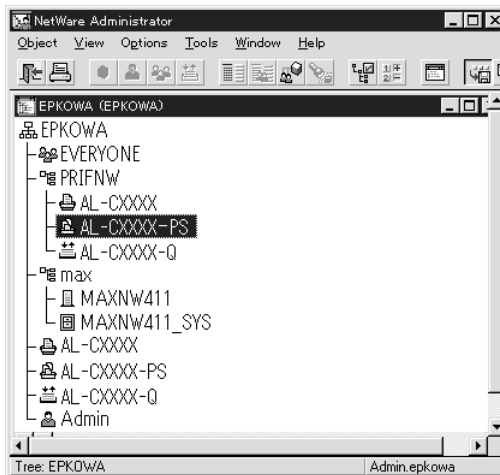


8. From the print queue list, select the queue you created in step 5 and click OK.

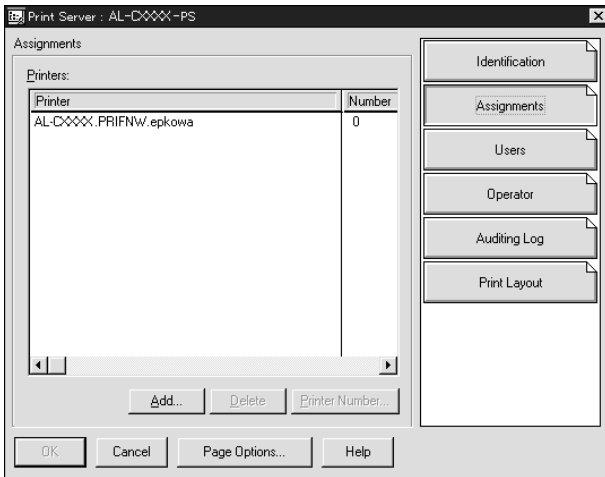
- Click Configuration, and select Other/Unknown for the Printer type list box and click OK.



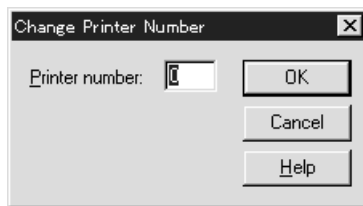
- Double-click the Print Server Object icon in the NetWare Administrator screen.



11. In the Print Server dialog box that appears, click Assignments and then click Add.



12. From the printer object list, select the printer object you want to assign and click OK.
13. Go back to the screen in step 11, and click the Printer Number button to set the printer number from 0 to 254.



14. To confirm the objects you have assigned, double-click the Print Server object icon. Click Print Layout, and check that the print server, printer, and print queue are connected.

Configuring for NetWare using EpsonNet Config

1. Turn on the device.
2. Load the print server from the file server's system console which the print queue volume is set.
>LOAD PSERVER print server name you set using
NWAdmin
3. Configure the network interface using EpsonNet Config. See the *EpsonNet Config User's Guide* for details.

If you use the NetWare objects that are already created, you can use EpsonNet Config with Web Browser too. See "NetWare" for details.

Using the NDPS Gateway

This section contains instructions on printing using Novell Distributed Print Services[®] (NDPS[®]) with Novell[®] NetWare[®] 5.x/6.0. Novell Distributed Print Services (NDPS) is the new generation print services of NetWare.

Note:

- Banners cannot be printed with NDPS.*
- The Status Monitor 3 utility cannot be used with NDPS.*
- Bind the IP or both IP or IPX protocols on the NetWare server that runs NDPSM.NLM and EPSONGW.NLM.*

Check the following points before starting.

- Install the appropriate client software, such as Novell Client 3.3 or later for Windows 95/98, Novell Client 4.8 or later for Windows 2000/NT 4.0, or Novell Client 4.9 or later for Windows XP on client workstations. Make sure they install NDPS.

- ❑ When you use the network interface with Bindery (either in the Print Server mode or the Remote Printer mode), you need PCONSOLE.EXE to create bindery objects such as Print Server and Print Queue objects. Since PCONSOLE.EXE does not come with NetWare 5.x/6.0, you need to get the file from Novell.

Outline of settings

The followings are basic steps to use the network interface with the NDPS printing system. Detailed procedures are described in the subsequent sections.

1. Select the Connection Type and make the printer environment on the Server and Clients.
2. Create an NDPS Manager object in NetWare Administrator.
3. Create a Printer Agent in NetWare Administrator.
4. Configure the network interface using EpsonNet Config.
5. Set the printer on the client workstations.

The environment to use, the settings you make, and the tools to use differ depending on the printer type and connection type you choose. You can create an NDPS Manager and Printer Agent in NetWare Administrator or partially via the Server Console. See the Novell online documentation for more details.

Making printer environment

1. Select the Connection Type from the following: Remote (rprinter on IPX), Remote (LPR on IP), or Forward jobs to a Queue (via the current legacy queue-based print services).

2. Install (bind) the following protocols on the server depending on the connection type you use.
 - For Remote (rprinter on IPX) connection, install IPX
 - For Remote (LPR on IP) connection, install TCP/IP
 - For Forward jobs to a Queue connection, install IPX
3. Install the appropriate Client Software on client workstations. Make sure they install NDPS.
4. Install printer drivers on client workstations. See the printer manual for the installation.

Note:

- Do not install the printer drivers via the NetWare server.
- Do not add printers and do not install printer drivers using Novell Print Manager (NWPMW32.EXE).

Creating an NDPS Manager

1. Run NetWare Administrator (NWADMIN32.EXE) on the client machine. The main browser window appears.
2. To create an NDPS Manager, click the Directory context icon, and then select Create from the Object menu.
3. Select NDPS Manager from the list.
4. Enter the NDPS Manager name in the NDPS Manager Name field.
5. Browse the Resident Server and select where you want the NDPS Manager assigned.

6. Browse the Database Volume and select where you want the NDPS Manager database assigned.
7. Click **Create**. The NDPS Manager icon appears in the main browser window.
8. Type **LOAD NDPSM** at the server console, and then select the NDPS Manager you have created.

Creating a Printer Agent

After creating an NDPS Manager, you can create Printer Agents, either public access printers or controlled access printers. The way to create a Printer Agent differs depending on the printer type you choose. The following are the features of public access printers and controlled access printers.

- ❑ **Public Access Printers:**
NDPS printers that are available to all network users and not associated with an NDS object. Users can select and print to any public access printer they can view from their workstations. However, these printers do not take full advantage of services such as security and job event notification.
 - ❑ **Controlled Access Printers:**
NDPS printers that are added to the NDS tree by NetWare Administrator. They are only available to the workstation user through the NDS object list. These printers can take full advantage of the security and management features provided by NDS.
1. Select the printer type either public access printer or controlled access printer.
 2. Create a public access printer. If you want to create a controlled access printer, go to step 3.

In NetWare Administrator, double-click the NDPS Manager you have created. Click Printer Agent List, then click New. Enter the Printer Agent name, and select Novell Printer Gateway for the Gateway Type. Click OK. Go step 4.

3. Create a controlled access printer.

In NetWare Administrator, select the Directory context icon. Select Create from the Object menu, then select NDPS Printer. Enter the Printer Agent name, select Create a new Printer Agent, then click Create. Select the NDPS Manager you have created, and select Novell Printer Gateway for the Gateway Type. Click OK.

4. Select None for the Printer Type, and Novell Port Handler for the Port Handler Type, then click OK.
5. Select the Connection type, and configure it as follows.

- For Remote (rpinter on IPX) connection

Print a status sheet of the network interface and configure the corresponding items.

Port Type: Select LPT1.

SAP Name: Enter the Primary Print Server Name.

Printer Number: Enter the Printer Port Number.

Network: Enter the Network Address.

Node: Enter the MAC Address.

Interrupt: Select None.

- For Remote (LPR on IP) connection

IP Address: Enter the IP address of the network interface. You can confirm the IP address on a status sheet.

- ❑ For Forward jobs to Queue connection
 - Queue Name:** Enter the queue name that the network interface uses in legacy queue-based print services (either in Print Server mode or Remote Printer mode).
 - Queue User Name:** Type a user name who has rights for the above queue.
 - Password:** Enter the password that the Queue User uses to login to the server.

6. Select None for the Printer Driver.
7. Confirm the Printer Agent that you have just created.

In NetWare Administrator, double-click the NDPS Manager object and click the Printer Agent List button. Check that the status of the Printer Agent you have just created is "Idle."

Note:

If you have selected Remote (rprinter on IPX), configure the network interface using EpsonNet Config, as described in the next section, and then print a status sheet.

Go to the next section if you select Remote (rprinter on IPX). Go to "Setting the printer on client workstations" if you select Remote (LPR on IP) or Forward jobs to Queue.

Configuring for NetWare using EpsonNet Config

Follow the steps below if you want to use the printer in IPX network.

Note:

Be sure that the one of the following clients is installed on your computer: Novell Client 32, Novell IntranetWare Client, or Novell Client.

1. Turn on the device.

2. From any NetWare client, log in to the target NetWare server as an ADMIN.
3. Run EpsonNet Config from the Start menu. See “Accessing the EpsonNet Config for Windows User’s Guide” for details.

If the IP address of the printer is already assigned, you can use EpsonNet Config with Web Browser too. See “NetWare” for details.

Setting the printer on client workstations

After configuring the network interface, set up the printer on client workstations.

Installing printers automatically

1. Run the Novell Printer Manager from Windows. If you are running Windows, run:
`\\PUBLIC\WIN32\NWPMW32.EXE`
2. In the Novell Printer Manager dialog, select **New** from the **Printer** menu.
3. Click **Add**. A list of available printers appears.
4. Select the printer you want and click **Install**.

The Novell Printers---Install dialog appears. You may modify the printer name that appears and select a pre-defined configuration.

5. Click **OK**. The printer driver for that printer model is installed automatically from the Resource Management Service.
6. Click **Close**. The printer appears in the main Printer Manager window and is available for print jobs.

Installing printers manually

1. Install the printer driver.
2. Change the Ports on the printer's properties dialog box. Specify the following objects for the port.
 - ❑ **For Public Access Printers:**
The Printer Agent you have created in "NDPS Public Access Printers" under Entire Network.
 - ❑ **For Controlled Access Printers:**
The Printer Agent you have created in the NDS tree.

See the Novell online documentation for details.

Instructions for Using a Dial-Up Network

This section explains about using a dial-up network.

Note:

The primary server described in this manual indicates a primary time server which offers time to the workstations on the network.

Using a dial-up network in each mode

Print Server mode

You must use a dedicated dial-up line.

Since polling is performed on the file server in the print server mode, no vicarious response by the router is possible. Therefore, no dial-up connection is possible in this case.

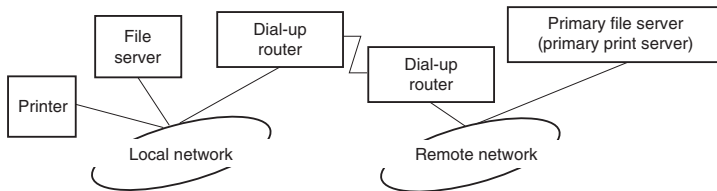
Remote Printer mode

In Remote Printer mode, use of a router with a vicarious response function allows the primary server to be installed at the dial-up destination. However, an extra account might be generated when the primary server is down. To avoid that, it is recommend to use connections via a dedicated dial-up line.

Follow the instructions for using a dial-up line.

When there is a primary server at the dial-up destination

For local networks with file servers:



- When the power is turned on

A dial-up is generated because access is made to a local file server first and then to a primary server. There is no problem since this dial-up only occurs at startup.

- When the network interface is not correctly set

A dial-up is generated because access is made to a local file server first and then to a primary server. This dial-up is repeated at intervals of approximately 5 minutes. Make the network interface settings correctly to avoid this problem.

- During normal operation (standby)

An SPX Watchdog packet is sent according to the NetWare protocol convention. Use a router with a vicarious response function to avoid a dial-up.

- ❑ During normal operation (printing)

A dial-up is generated while the printing data is being transferred. This is not a problem because it is a dial-up specific to the dial-up network.

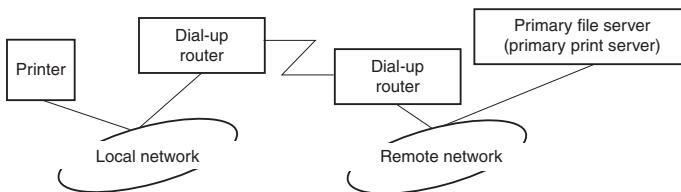
- ❑ When the primary server is down during operation

A dial-up is generated because a connection to the primary server is attempted periodically. Since this is attributable to the automatic re-connection function, turn off the printer once.

- ❑ When the file server on the local network is down

When there is no file server on the local network, NetWare cannot be used on the local network. In this case, the NetWare protocol for the network interface is also not available. No dial-up is generated under this condition. When the file server on the local network is restored, the network interface is also automatically restored.

For local networks with no file server:

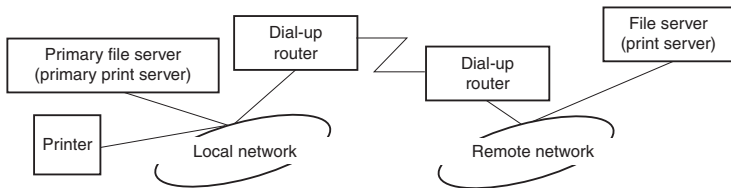


Depending on the router settings, the NetWare protocol can be used without a file server on a local network. This setup follows the same pattern as that described above.

When there is a primary server in the local network

Even if a primary server is installed on the local network, an unnecessary dial-up may be generated depending on the configuration.

The following problems are common to both Print Server mode and Remote Printer mode.



- When the power is turned on

Since access is made only to the primary server, no dial-up is generated.

- When the network interface is not correctly set

Since access is made only to the primary server, no dial-up is generated. However, if the file server/print server of the remote network is erroneously set as the primary server, an unnecessary dial-up might be generated. Correct the settings to avoid this problem.

- During normal operation (standby/printing)

Since access is made only to the primary server, no dial-up is generated.

- When the primary server is down during operation

Connection to the primary server is periodically attempted, but no dial-up is generated. However, if the router is set to pass SAP packets (Find Nearest Server), an unnecessary dial-up might be generated. To avoid this, turn off the printer once, or do not allow the router to pass SAP packets (Find Nearest Server).

Settings for UNIX Users

Introduction to UNIX Settings

This chapter explains how to set up the device for different UNIX systems using the `lpr` command.

Your device is able to function as a remote printer on systems using TCP/IP Ethernet transfer with `lpr` remote printing protocol, or standard `ftp` (file transfer protocol).

Note:

Because this device does not convert data into the printer control language, a printer driver and filter are necessary for each system.

lpr filters

Filters for `lpr` are controlled by the name given to the remote printer. When setting up an `lpr` printer entry, a name is entered for:

- the local printer name to be redirected
- the host name of the station to which the print is sent
- the remote printer name (name of the printer port on the remote station)

Many different remote printer names may be set up, all directed to the same Ethernet remote host, and each is given a different local printer name to be redirected. Different types of print jobs may be sent to different printer names, which will then all print out on the same printer, through the same Ethernet interface, but using different filters.

The remote printer name options used to invoke the different filters are as follows:

lpb	Binary files (no filters)
lpa	ASCII files (carriage returns at line ends)
lpbf	Binary file with form feed at file end
lpaf	ASCII file with form feed at file end

All other remote printer name options will be treated the same as lpb.

The following is an example of sending a text file, "txtfile", via lpr with a form feed appended:

```
% lpr -plpaf txtfile
```

Setting Up Different UNIX Systems Using the lpr Command

The following UNIX systems can print using the standard lpr command.

- SunSoft Solaris 2.4 or later
- SunOS 4.1.4 or later
- IBM AIX 3.2.5 or later and 4.1.3 or later
- HP-UX 9.05 or later
- SCO UNIX 4.2 or later

Setting up for SunSoft Solaris 2.4 or later

In the following steps, substitute the name that your device will be known by for `HOSTNAME`, and the name by which you want your device to be known for `Rprinter`.

1. Add the IP address and printer host name to the `\etc\hosts` file.

For example:

```
22.33.44.55 HOSTNAME
```

2. Define the host name as a print server.

For example:

```
lpsystem -t bsd HOSTNAME
```

3. Create the printer.

For example:

```
lpadmin -p Rprinter -s HOSTNAME\aux-T unknown-l  
any
```

4. Enable the device for use.

For example:

```
accept Rprinter  
enable Rprinter
```

5. To print, use the `lp` command.

For example:

```
lp -d RPrinter Print-File-Name
```

Setting up for SunOS 4.1.4 or later

In the following steps, substitute the name that the device will be known by for HOSTNAME, and the name by which you want the device to be known for Rprinter.

1. Add the IP address and printer host name to the `\etc\hosts` file.

For example:

```
22.33.44.55 HOSTNAME
```

2. Create a spool directory.

For example:

```
mkdir \var\spool\lpd\PRIFx
```

3. Add the printer entry to the `\etc\printcap` file.

For example:

```
Rprinter |  
ALCXXX:lp=:rm=HOSTNAME:rp=aux:sd=/var/spool/  
lpd/PRIFx
```

4. To print, use the `lpr` command.

For example:

```
lpr -s -PRPrinter Print-File-Name
```



Caution:

Files that exceed 1 MB may not be printed unless the -s option is used.

Setting up for IBM AIX 3.2.5 or later and 4.1.3 or later

In the following steps, substitute the name that the device will be known by for HOSTNAME, and the name by which you want the device to be known for Rprinter.

1. Add the IP address and printer host name to the /etc/hosts file.

For example:
22.33.44.55 HOSTNAME

2. Run smit.

For example:
smit printer

3. Set the printer name (for example: Rprinter) in:

"Manage Remote Printer"
"Client Services"
"Remote Printer Queues"
"NAME of queue to add".

Set the host name (for example: HOSTNAME) in:

"DESTINATION HOST for remote jobs".

Set the port name (for example: aux) in:

"Name of QUEUE on remote printer".

4. To print, use the lpr command.

For example:
lpr -PRPrinter Print-File-Name

Setting up for HP-UX 9.05 or later

In the following steps, substitute the name that the device will be known by for HOSTNAME, and the name by which you want the device to be known for Rprinter.

1. Add the IP address and host name to the /etc/hosts file.

For example:

```
22.33.44.55 HOSTNAME
```

2. Terminate the printer service.

For example:

```
lpshut
```

3. Create a printer.

For example:

```
lpadmin -pRPrinter -v/dev/null -mrmmodel  
-ormHOSTNAME -orpaux
```

4. Restart the print service.

For example:

```
lpshed
```

5. Enable the printer for use.

For example:

```
accept Rprinter  
enable Rprinter
```

6. To print, use the lp command.

For example:

```
lp -DRPrinter Print-File-Name
```

Setting up for SCO UNIX 4.2 or later (Open Server)

In the following steps, substitute the name that the device will be known by for HOSTNAME, and the name by which you want the device to be known for Rprinter.

1. Add the IP address and host name to the /etc/hosts file.

For example:

```
22.33.44.55 HOSTNAME
```

2. Execute rlpconf to register the printer.

For example:

```
rlpconf
```

3. Enter the name of the printer.

For example:

```
Please enter the printer name (q to quit):RPrinter
```

4. Specify the remote printer as the printer type.

For example:

```
Is Rprinter a remote printer or a local printer (r/l)? r
```

5. Enter the name of the remote printer's host.

For example:

```
Please enter the name of the remote host that
```

```
Rprinter
```

```
is attached to:
```

```
HOSTNAME
```

```
Printer RPrinter is connected to host HOSTNAME
```

6. Confirm that the entries are correct.

For example:

```
Is this correct?(y/n)y
```

7. Specify that the RLP extended function (valid when the print server is SCO-UNIX) will not be used.

For example:

If HOSTNAME currently runs SCO OpenServer Release 5 or above, it can support the extended remote line printer protocol. Do you want to turn on the "extended RLP protocol" support flag? If you are not sure, answer "n"? (y/n)(n)n

8. Specify whether the created printer is to become the default printer.

For example:

Would you like this to be the system default printer? (y/n)y

9. To print, use the lpr command.

For example:

lpr -d RPrinter Print-File-Name

Using the ftp Command

ftp commands are common to all UNIX systems.

ftp programs use interfaces that are common for all unix systems.

The following is an example of printing using the ftp command (the entry operations are **highlighted**).

```
ftp> open 22.33.44.55
```

```
Connected to 22.33.44.55
```

```
220 PR-lfx(22.33.44.55) ftp server ready.
```

Name: **XXXX**

331 Password Required for (No Name).

Password: **XXXX**

230 User logged in.

200 Type set to I.

ftp> **put binary file**

200 PORT command successful.

150 Opening data connection for binary_file

226 Transfer complete

ftp> **bye**

Tips

Instructions on Using DHCP

When you assign an IP address to the network interface using the DHCP function, you need to change the printer port setting every time you turn on the device.

We recommend that you make one of the settings below on the DHCP server or the router and then assign a valid IP address to the network interface:

- ❑ Assign a valid IP address to the MAC address of the network interface.
- ❑ Assign an IP address that is within the range of the assignment of the DHCP server. Do not let the DHCP server assign the IP address to any other devices.

If you cannot make the above settings on the DHCP server, make one of the settings below:

- ❑ Assign an IP address that is not within the range of the assignment of the DHCP server.
- ❑ Assign an IP address that is within the range of the assignment of the DHCP server. In this case, you must turn on the network interface first, and then turn on the DHCP server.

Setting an IP Address Using the arp/ping Command

If you are using UNIX or OS/2, you need to use the arp and ping command to set the IP address of the network interface. You can also use these commands with Windows, if you have correctly installed TCP/IP networking on these systems.

Note:

- ❑ *Make sure that the Set using PING function is enabled on the TCP/IP menu in EpsonNet Config. If this function is disabled, you cannot set the IP address using the arp/ping command.*
- ❑ *Make sure the network interface and the computer are in the same segment.*

Before you start, you need the following information:

- ❑ A valid IP address for the network interface. Ask your network administrator for an IP address which does not cause conflicts with any other device on the network. If you are the network administrator, choose an address within your subnet which does not conflict with any other device.
- ❑ The MAC (Ethernet hardware) address of the network interface. You can find out the MAC address on a status sheet.

Checking the LAN

First, you need to check that the computer can reach to other computer in the same segment, as follows:

1. Set the default gateway to the host on which you are setting up the network interface.

If there is a server or a router which acts as a gateway, enter the address of the server or the router. If there is no gateway, enter the IP address of your computer as a gateway address.

2. Assume that you want to reach to the computer having the IP address "192.168.100.101". Check that the computer is reachable by "pinging" it from the command line:
ping 192.168.100.101
3. If the computer is reachable, you can see the following result (the exact form of the message depends on your operating system, and the time may vary):
64 bytes from 192:168:100:101:icmp_seq=0. Time=34.ms
4. If the computer is unreachable, you may see something like this:
PING 192:168:100:101:56 data bytes

If you press Ctrl+C, you may see something like this:
192:168:100:101 PING Statistics
3 packets transmitted, 0 packets received,
100% packet loss

Again, the exact wording of the message you see may differ from this, depending on your operating system. If you cannot "ping" the computer, check the following:

- The address in the ping command is correct.
- The Ethernet connection to the computer has been made correctly, and all hubs, routers, etc. are switched on.

Setting and checking the new IP address

To set the new IP address of the network interface which you have obtained from your network administrator, use the ping command and arp command with the -s flag (create an ARP entry).

Note:

In the following procedure, we assume that the MAC address of your network interface is 00:00:48:93:00:00 (hexadecimal), and that the IP address which you will be assigning is 192.168.100.201 (decimal). Substitute your values for these addresses when you type in the commands.

1. From the command line, type:
Example: `arp -s 192.168.100.201 00-00-48-93-00-00`
2. Execute the ping command to set the IP address by pinging it:
Example: `ping 192.168.100.201`
3. The network interface should now respond to the ping. If it does not, you may have incorrectly typed the MAC address or the IP address in the `arp -s` command. Double-check and try again. If none of these actions are effective, re-initialize the network interface and try again.
4. Print a status sheet to check whether the new IP address has been assigned to the network interface.

Note:

*When the IP address is set by the ping command, the subnet mask is automatically changed by the class of the IP address. To change the subnet mask and the default gateway according to your network environment, use *EpsonNet Config* on Windows operating systems or *EpsonNet Config* in Macintosh.*

Instructions on Using a Dial-Up Router

This section describes instructions on using a dial-up router.

If DHCP is used to assign an IP address of the network interface and the Dynamic DNS function is not supported, you need to change the printer port setting every time you turn on the device. Therefore, we recommend that you set a valid IP address for the network interface by using the one of the following methods.

- ❑ Set the IP address for the network interface manually. Use EpsonNet Config. See the *EpsonNet Config User's Guide* for details.
- ❑ Specify the network interface by using the bind of DHCP function.
- ❑ Set the exclusive address of the DHCP function.

Note:

- ❑ *Use NetBEUI printing if you do not want to go through these steps.*
- ❑ *See the manual of the Dial-Up router for more information on scope range, bind, exclusive address of the DHCP function.*

Function of Universal Plug and Play

When you connect your device to the network, the device is automatically assigned with an IP address, and the printer's icon appears in the My Network Places folder. By double-clicking the printer's icon, you can access EpsonNet Config with Web Browser for basic information about the device, such as manufacturer, model name, location, and administrator's name.

Right-click the printer's icon in the My Network Places folder and select Properties. You can check the brief information of the network interface.

To use this function, the Universal Plug and Play must be installed on Windows Me or future operating systems. For information on how to install Universal Plug and Play, see the Windows Me online help.

Note:

Before using the Universal Plug and Play function, you must enable the Universal Plug and Play function in EpsonNet Config. See the EpsonNet Config User's Guide or "Configuring the Network Interface Using EpsonNet Config with Web Browser".

Uninstalling Software

Follow the steps below to uninstall the network software.

Windows XP/Server 2003

1. Click Start, click Control Panel, and then click Add or Remove Programs.
2. Select the utility you want to uninstall, and then click the Change/Remove button.
3. Follow the on-screen instructions to complete uninstallation.

Windows Me/98/95/2000/NT 4.0

1. Click Start, point to Settings, and then select Control Panel.
2. Double-click the Add/Remove Programs icon.
3. Select the utility you want to uninstall, and then click the Add/Remove button (Windows Me/98/95/NT 4.0) or the Change/Remove button (Windows 2000).

4. Follow the on-screen instructions to complete uninstallation.

Macintosh

1. Double-click the EpsonNet Config Installer icon.
2. Click the Continue button.
3. In the License dialog box, read the License Agreement, and then click the Accept button.
4. Select Uninstall from the pull-down menu.
5. Click the Uninstall button.
6. Follow the on-screen instructions to complete uninstallation.

Note:

You can also uninstall the software by dragging the EpsonNet folder to the Trash.

Problem Solver

General Problems

Cannot configure the network interface or cannot print from the network.

Cause	What to do
The printer settings or network settings may be wrong.	First, check to see if you can print a status sheet, as described in “Status sheet button”. If you can print a status sheet, check the network settings; otherwise, set the interface mode of the printer’s control panel to Auto or Option.

Cannot print even if you have assigned the IP address to the computer and the network interface.

Cause	What to do
You have assigned an IP address to the computer manually, but you assigned the IP address to the network interface by Automatic Private IP Addressing (APIPA).	Assign the IP address for the network interface so that it belongs to the same segment of the computer. Use EpsonNet Config or the printer’s control panel.

Unable to start EpsonNet Config.

Cause	What to do
You have added or deleted protocols after installing EpsonNet Config.	Uninstall EpsonNet Config and then reinstall it. See “Uninstalling Software” and “Installing EpsonNet Config for Windows”.

The message “Could not install the printer driver.” appears when you set up the network interface.

Cause	What to do
You have not installed the printer driver.	Install the printer driver on your computer before setting up the network interface. See “About Installing the Printer Driver” or the manual shipped with your printer for instructions on how to install the printer driver.

The message “EpsonNet Config cannot be used because no network is installed.” appears when you start EpsonNet Config.

Cause	What to do
Both TCP/IP and IPX/SPX are not installed on the computer.	Install the TCP/IP or IPX/SPX protocol.
TCP/IP is installed on the computer, but its IP address is not set correctly.	Set a correct IP address for the computer.

The message “Could not complete communicating configuration data” appears when you send settings to the network interface.

Cause	What to do
This may happen when using a dial-up router.	Run Command Prompt from the computer on which EpsonNet Config is installed, and then enter the following command: Format: >ROUTE_ADD_the IP address of the network interface_ the IP address of the computer (the under bar represents one space) Example: >ROUTE ADD 192.168.192.168 22.33.44.55.

Unable to start EpsonNet Config with Web Browser.

Cause	What to do
You have not set the IP address for the network interface.	Set the IP address for the network interface using EpsonNet Config for Windows or Macintosh, the printer’s control panel, or the arp/ping commands. You can check the IP address on a status sheet. See the <i>EpsonNet Config User’s Guide</i> or “Setting an IP Address Using the arp/ping Command”.

Unable to set the IP address using the arp/ping commands.

Cause	What to do
The network interface is not connected to the network.	Connect the network interface to the network, and check the network environment.

The device is located beyond the router.

The device and the computer must be in the same segment.

The Model Name and IP Address do not appear in the EpsonNet Config dialog box.

Cause

What to do

If the valid IP address is not set, the items indicated in the dialog box mentioned above may not appear.

Set a valid IP address.

Refresh the status by selecting Refresh from the View menu.

Increase the length of time before a timeout. To do this, select Options from the Tool menu, and then select Timeout. Note that doing so can cause EpsonNet Config to run more slowly.

An extra account is generated when using the dial-up network.

Cause

What to do

NetWare is set to Enable even though you are not using NetWare.

Set NetWare to Disable on the NetWare screen of EpsonNet Config with Web Browser.

The network interface does not appear in the EpsonNet Config list view.

Cause

What to do

There are several possible causes. Check the items described on the right.

Make sure the printer is turned on.

How to acquire an IP address.

To acquire your IP address, you need to apply to the NIC (Network Information Center) in your country.

Problems Specific to Your Network Environment

Windows Me/98/95 environment

A dial-up connection dialog box appears when printing with TCP/IP via EpsonNet Print.

Cause	What to do
You have selected a phone line or modem (for Internet Explorer 4.0x) for the Internet connection.	Printing ends normally after you cancel this dialog box, but the message appears every time you print. Connect to the Internet using a local area network or start a dial-up network manually.

A communication error message appears when you start printing or when you open the printer's properties.

Cause	What to do
When you print with NetBEUI or IPP, EPSON Status Monitor cannot be used.	Open the printer's properties and then click the Optional Settings tab. Select the Update the Printer Option Information manually radio button. Open the printer's properties and then click the Utility tab. Clear the Monitor the Printing Status check box.

Windows XP/2000/NT environment

A dial-up connection dialog box appears when you are printing with TCP/IP via EpsonNet Print.

Cause	What to do
You have selected a phone line or modem (for Internet Explorer 4.0x) for the Internet connection.	Printing ends normally after you cancel this dialog box, but the message appears every time you print. Connect to the Internet using a local area network or start a dial-up network manually.

A communication error message appears when you start printing or when you open the printer's properties.

Cause	What to do
When you print with NetBEUI or IPP, EPSON Status Monitor cannot be used.	Open the printer's properties and then click the Optional Settings tab. Select the Update the Printer Option Information manually radio button. Open the printer's properties and then click the Utility tab. Clear the Monitor the Printing Status check box.

No clients except an administrator can print via Windows NT Server 4.0.

Cause	What to do
CREATOR OWNER has been deleted from the Printer Permissions list, or CREATOR OWNER is set to Print or No Access.	Add CREATOR OWNER by clicking the Add button in the Printer Permissions dialog box, or set CREATOR OWNER to Manage Documents (default setting).

Macintosh environment

Devices do not appear in Chooser.

Cause	What to do
You may have selected a wrong one for "Connect via" in the AppleTalk Control Panel.	Make sure to select Built-in Ethernet in AppleTalk Control Panel, and make sure AppleTalk is active in Chooser. Also, check the network equipment including the hub cable.

The Rendezvous printer setting is overwritten by the AppleTalk printer setting when the same printer is set up with AppleTalk after the printer is set up with Rendezvous.

Cause	What to do
Change the AppleTalk printer name so that it does not conflict with the Rendezvous printer name.	

NetWare environment

Nothing prints even though clients have sent data to the device.

Cause	What to do
Clients may not be registered, or the network interface may not be logged in to the NetWare server.	Make sure clients are registered as users of the print queue and the print server. Also, make sure the network interface is logged in to the NetWare server.

EpsonNet Config will not start correctly.

Cause	What to do
Microsoft NetWare Directory Service is installed on your computer.	If you are using the NDS service, install the Novell NetWare Client service.

It takes a long time to start EpsonNet Config.

Cause	What to do
The Novell Client service is installed.	Double-click Network in Control Panel, and then double-click the network adapter that does not use the IPX/SPX-compatible protocol. Clear the items related to IPX to unbind IPX.

The devices on the IPX network do not appear in the EpsonNet Config dialog box.

Cause	What to do
The device is turned off.	Turn on the device.
The device is not in the same segment as the computer where you installed EpsonNet Config.	To search for network interfaces in other segments, use Search options of EpsonNet Config.
You have not logged in to the target NetWare server with supervisor privileges.	From the computer on which EpsonNet Config is installed, log in to the target NetWare server with supervisor privileges.

Initializing the Network Interface

To initialize your network interface, turn on the device. Then, while both the status light and the data light are off, hold down the status sheet button of the network interface for twenty seconds. The length of time necessary to hold down the status sheet button varies depending on the device model. The green light flashes and the green data light turns on, indicating the network interface is being initialized.

After the initialization is complete, press the status sheet button to print a status sheet. Check the information on the status sheet.

Note:

You can also initialize the network interface using EpsonNet Config by clicking the Default Settings button.

Restrictions on EPSON Status Monitor 3

The operation of EPSON Status Monitor 3 is different, depending on whether the printer or all-in-one is connected to the network interface for use in the wireless LAN environment or to the computer directly, as described below.

For the laser printer

For Windows XP Service Pack 2 Users

If you share the laser printers on the computer running Windows XP Service Pack 2 on the network, client computers with the following conditions cannot monitor the printers using EPSON Status Monitor 3:

- Client computers running Windows Me/98/95
- Client computers located in another network segment

Solution

1. Click Start, point to Control Panel, and then select Security Center. Click Windows Firewall.
2. Click the Exceptions tab, and then click the Add Program button.
3. Click the Browse button.
4. Select the program located in the following folder, using the Look in pull-down menu.

C:\Program Files\Common Files\EPSON\EBAPI\EEBAgent.exe

Note:

- Substitute the drive letter for your operating system.*
 - If you have upgraded EPSON Status Monitor 2 to EPSON Status Monitor 3, select the folder where EPSON Status Monitor 2 is installed.*
5. Confirm that EEBAgent.exe is registered in the Programs list, and then click OK.
 6. Confirm that the check box for EEBAgent.exe is selected in the Programs and Services list, and then click OK.

The Job Management function cannot be used (except in the wired LAN connection)

In the Monitoring Preferences dialog box, the Job Management setting does not appear. Therefore, the Job Information tab and the Notification message when your print job is finished dialog box do not appear.

Note:

The models available on the market after 2004 are excluded.

Specifications

Network Interface Specification

Network Interface:	RJ-45 connector
Button:	Status sheet button
Lights:	Status light, Data light
Dimensions:	Width: 100 mm (approx. 3.94 in.) Depth: 115 mm (approx. 4.53 in.) Height: 30 mm (approx. 1.18 in.)
Weight:	Approx. 0.5 kg (approx. 1.1 lb)

Electrical Specifications

Rated Voltage:	DC 5 V \pm 5%
Rated Current:	300 mA
Current Consumption:	Less than 300 mA

Regulatory Approvals

EMC: FCC part 15 subpart B Class B
CSA C108.8 Class B
CISPR Pub.22 Class B
CE Marking (EMC):
EMC Directive 89/336/EEC
EN 55022 Class B
EN 55024
AS/NZS CISPR 22 Class B

Reliability

MTBF: 10,000 hours (power on, 100% duty)
MTTR: N/A

Environmental

Operating Temperature: 0 to 40° C (32 to 104° F)
Storage Temperature: -40 to 70° C (-40 to 158° F)
Operating Humidity: 30 to 90% RH
Storage Humidity: 0 to 90% RH

Operating Vibration:	0.5 G (5 to 55 Hz)
Storage Vibration:	1.5 G (5 to 55 Hz)
Operating Shock:	1 G
Storage Shock:	2 G

FCC Compliance Statement for United States Users

This equipment has been tested and found to comply with the limits for a Class B digital device, pursuant to Part 15 of the FCC Rules. These limits are designed to provide reasonable protection against harmful interference in a residential installation. This equipment generates, uses and can radiate radio frequency energy and, if not installed and used in accordance with the instructions, may cause harmful interference to radio or television reception. However, there is no guarantee that interference will not occur in a particular installation. If this equipment does cause interference to radio and television reception, which can be determined by turning the equipment off and on, the user is encouraged to try to correct the interference by one or more of the following measures.

- Reorient or relocate the receiving antenna
- Increase the separation between the equipment and receiver
- Connect the equipment into an outlet on a circuit different from that to which the receiver is connected
- Consult the dealer or an experienced radio/TV technician for help.

WARNING

The connection of a non-shielded equipment interface cable to this equipment will invalidate the FCC Certification of this device and may cause interference levels which exceed the limits established by the FCC for this equipment. It is the responsibility of the user to obtain and use a shielded equipment interface cable with this device. If this equipment has more than one interface connector, do not leave cables connected to unused interfaces.

Changes or modifications not expressly approved by the manufacturer could void the user's authority to operate the equipment.

For Canadian Users

This Class B digital apparatus complies with Canadian ICES-003. Cet appareil numérique de la classe B est conforme à la norme NMB-003 du Canada.

DECLARATION of CONFORMITY

According to 47CFR, Part 2 and 15 for Class B Personal Computers and Peripherals; and/or CPU Boards and Power Supplies used with Class B Personal Computers:

We: EPSON AMERICA, INC.

Located at: MS 3-13
3840 Kilroy Airport Way
Long Beach, CA 90806
Telephone: 562-290-5254

Declare under sole responsibility that the product identified herein, complies with 47CFR Part 2 and 15 of the FCC rules as a Class B digital device. Each product marketed, is identical to the representative unit tested and found to be compliant with the standards. Records maintained continue to reflect the equipment being produced can be expected to be within the variation accepted, due to quantity production and testing on a statistical basis as required by 47CFR §2.909 Operation is subject to the following two conditions: (1) this device may not cause harmful interference, and (2) this device must accept any interference received, including interference that may cause undesired operation.

Trade Name: EPSON

Type of Product: Network Interface Card

Model: EU-113

Index

A

Administrator, 115
AppleTalk, 110
arp, 201, 202
Automatic Private IP Addressing (APIPA), 99

B

Bindery, 107
Bindery emulation, 164, 166

C

Checking LAN, 201
Community, 112
Configuration, 18
Configuring network interface
 for Macintosh, 50
 for Windows, 45
Controlled Access Printers, 182, 186

D

Data light, 16
Default gateway, 99
DHCP, 18
Dial-up network, 186
DNS server address settings, 108
Dynamic DNS, 100

E

EpsonNet Config for Macintosh, 87
 Accessing user's guide, 94
 Installation, 93
 Overview, 93
 System requirements, 93
EpsonNet Config for Windows, 87
 Accessing user's guide, 91
 Installation, 90
 Overview, 89

- System requirements, 90
- EpsonNet Config with Web Browser, 87
 - Configuring network interface, 97
 - Opening Screen, 102
 - Overview, 96
 - Password, 116
 - Supported web browser, 96
 - Web browser settings, 96
- EpsonNet Internet Print, 88
 - Installation, 139
 - Overview, 138
 - Setting up device, 140
 - System requirements, 139
- EpsonNet Print, 87
 - Installation, 119
 - Overview, 118
 - System requirements, 118
- EpsonNet SetupManager, 88
 - Accessing user's guide, 160
 - Installation, 160
 - Overview, 157
 - System requirements, 158
- EpsonNet WebManager, 88
 - Functions, 151
 - Installation, 154
 - Online guide, 156
 - Operating structure, 152
 - Overview, 149
 - Start up, 154
 - System requirements, 149
- Ethernet settings, 106
- EtherTalk, 18

F

- ftp, 18, 198

H

- High-Speed printing, 137
- Host name and domain name settings, 109

I

- Index frame, 102
- Information frame, 104
- Initializing the network interface, 215
- Installing components, 25
- Installing network interface, 42
- Installing printer driver, 57
- Internet printing, 140, 145
- Internet Printing Protocol, 138
- IntranetWare, 166
- IP address, 97, 201, 210
- IP address settings, 108
- IPP, 111
- IP trap, 112
- IPX trap, 113

L

- lpd, 18
- LPR enhanced printing, 136
- LPR filters, 191
- LPR standard printing, 136

M

- MAC address, 105
- Manual settings, 114
- Menu frame, 103
- Microsoft network, 111
- MS Network, 111

N

- NDPS, 179
- NDPS Manager, 181
- NDPS Printer Agent, 182
- NDS, 107, 164
- NET USE command, 80, 84
- NetWare, 106
 - 3.x, 166, 167
 - 4.x, 166, 171, 174
 - 5.x, 166, 174, 179
 - 6.0, 166, 174, 179

- Network interface
 - Features, 14
 - Operating environment, 11
 - Overview, 8
 - Package contents, 9
 - Software, 87
 - Supported device, 13
- Network Screens, 106

O

- Optional Screens, 115

P

- PCONSOLE, 167, 180
- Ping, 202
- Printing control, 113
- Printing methods
 - Features, 22
 - Printing from Macintosh, 22
 - Printing from Windows, 21
- Print queue, 18
- Print server mode, 106, 163, 166, 186
- Protocol, 11, 18
- Public Access Printers, 182, 186

R

- Remote printer, 18
- Remote printer mode, 107, 163, 167, 171, 174, 187
- Rendezvous settings, 110
- Reset, 104, 116
- Return to default button, 116
- RJ-45 connector, 17
- Router, 99

S

- SAP name, 183
- Setting IP address, 97, 201, 202
- Setting up network interface, 19, 42
- Setting up printer (for Macintosh), 55
- SLP settings, 110
- SNMP, 112

- Specifications, 217
- Status alert window, 148
- Status light, 16
- Status sheet button, 17
- Subnet mask, 99

T

- TCP/IP, 18, 98, 108
- Time, 114
- Timeout, 114
- Time server settings, 115

U

- Uninstalling software, 205
- Universal Plug and Play, 100
 - Function, 204
 - Settings, 109
- UNIX, configure for different OS, 192
- Using bindery print server, 166
- Using bindery remote printer mode, 171
- Using DHCP, 200
- Using dial-up network, 186
- Using dial-up router, 203
- Using ftp command, 198
- Using lpr command, 192
- Using NDPS gateway, 179
- Using NDS print server, 166
- Using NetWare, 164
- Using remote printer mode, 167
- Using the printer with
 - Macintosh, 85
 - NetWare, 162
 - UNIX, 191
 - Windows 2000, 68
 - Windows Me/98/95, 64
 - Windows NT 4.0, 81
 - Windows Server 2003, 74
 - Windows XP, 57