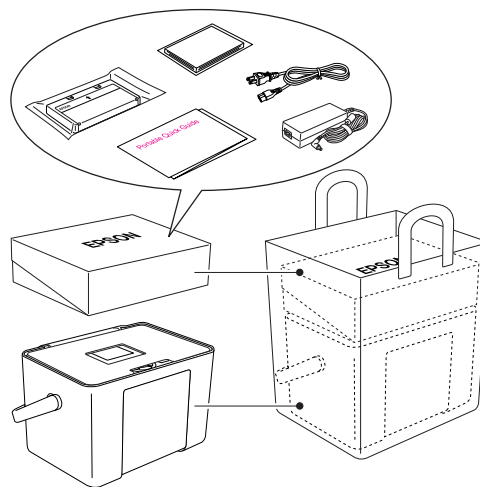


# Portable Quick Guide

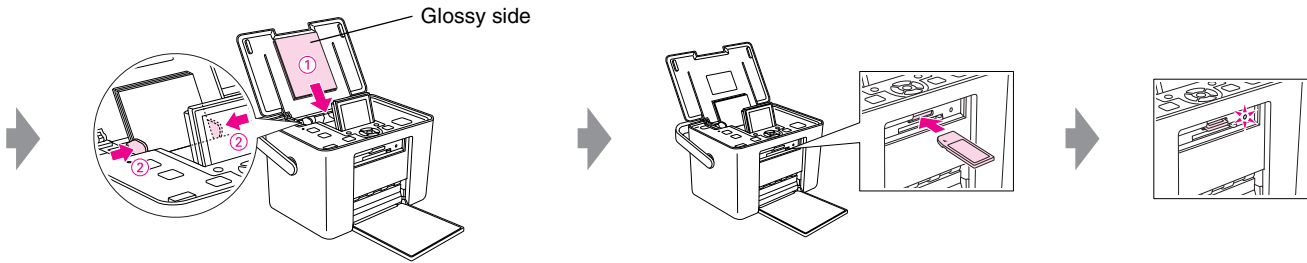
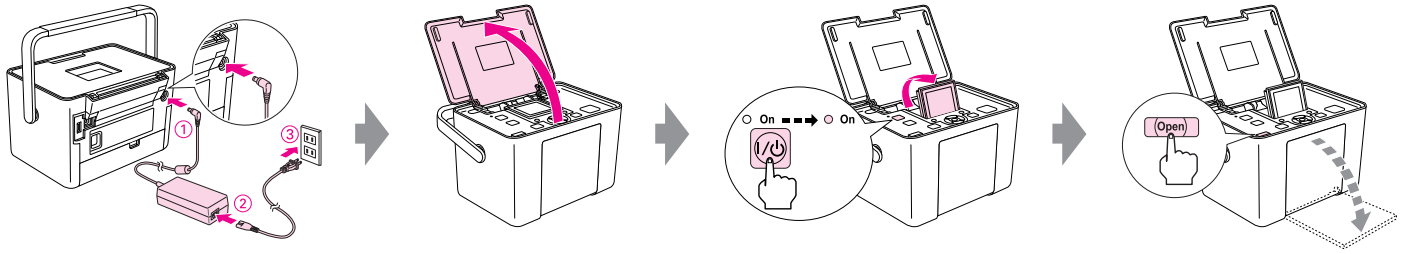
- Refer to this manual for daily basic operation. When traveling with PictureMate, keep the accessories shown on the right, such as a spare cartridge, in the travel case.



\*410674600\*



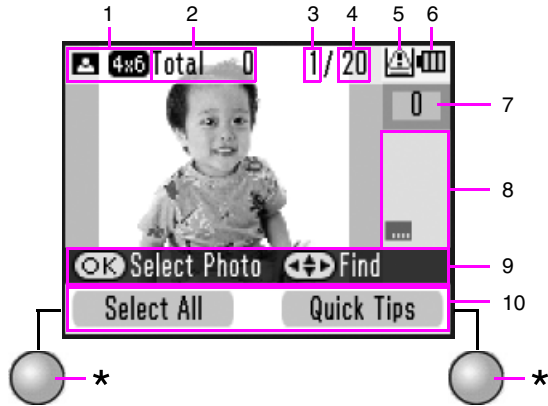
## Preparing to Print




Load paper (up to 20 sheets)



## Understanding the LCD Display



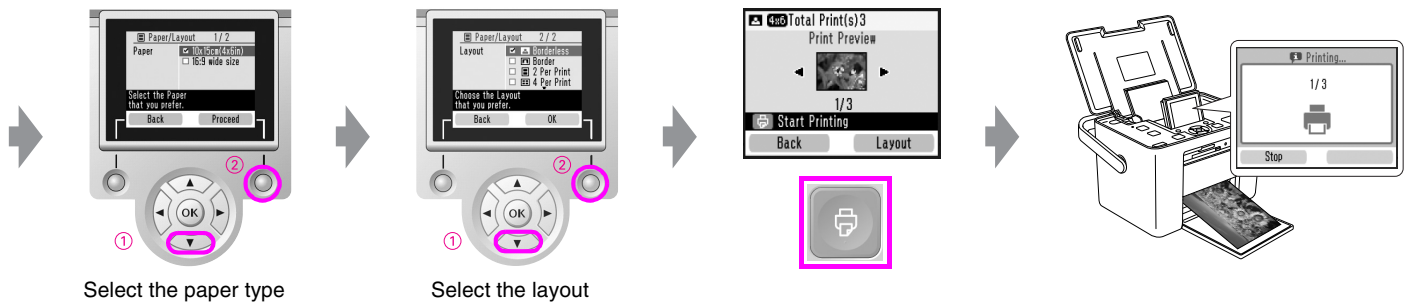
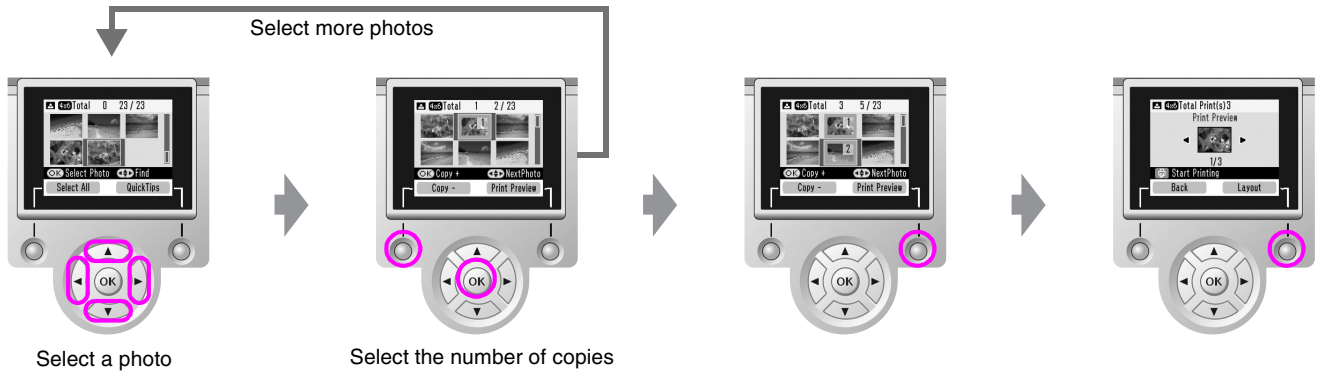
2	The total number of pages to print.
3	The number of the photo in order of the date taken.
4	Total number of photos.
5	Appears when ink is low.
6	Optional battery status.
7	The number of copies for the selected photo.
8	Selected optional print settings.
9	Guidance. The icons show the buttons to press.
10	The actions assigned to the soft keys(*) for the current screen.

You can change the number of photos displayed by pressing the  Display button.

1	Selected size and layout.
---	---------------------------



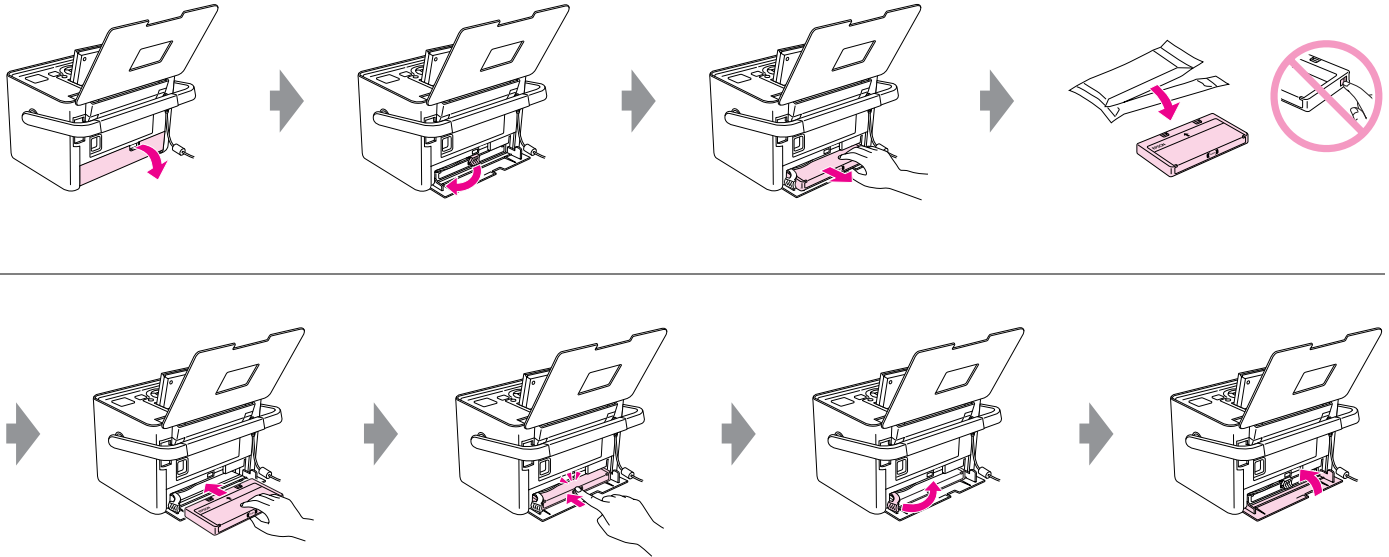
## Selecting and Printing Some Photos





## Replacing the PicturePack (T5844 / T5846)

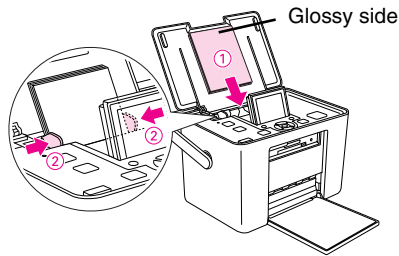
When ink is low, prepare the new PicturePack. If the message appears to prompt you to replace the PicturePack, follow the steps below.





## If banding appears on your photo

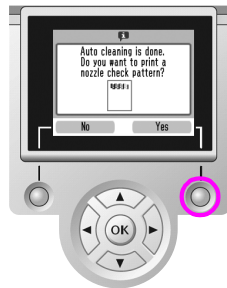
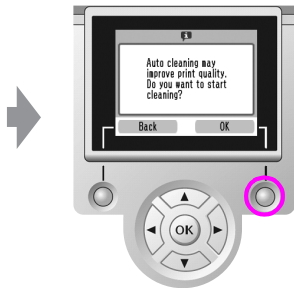
Follow the steps below to clean the nozzles.



Select Maintenance



Select Auto Cleaning



Select Yes to finish.



Select No and repeat the cleaning about 2 times.