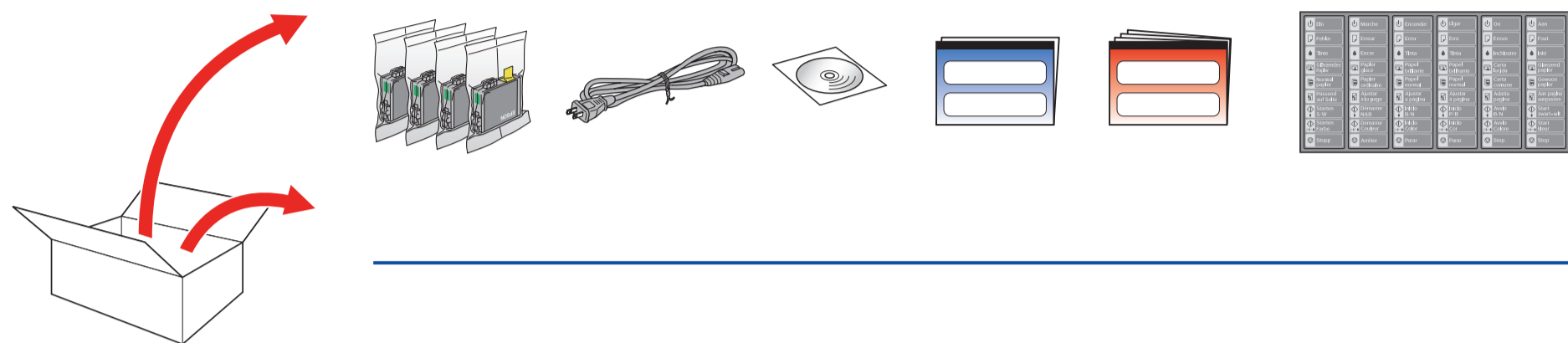


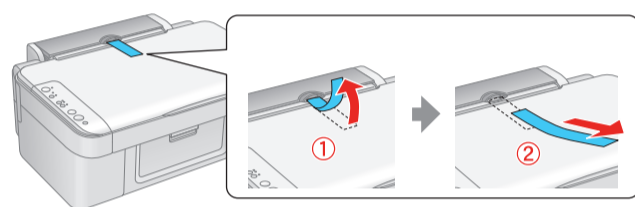
# EPSON STYLUS™ CX4080 Series

## Inizia qui • Para empezar • Começar por aqui

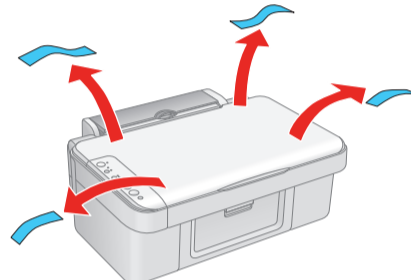
1.



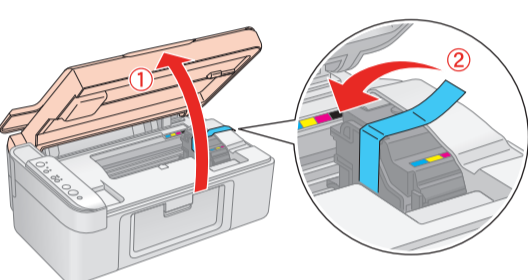
1



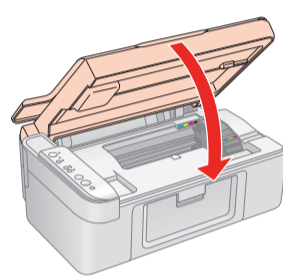
2



3

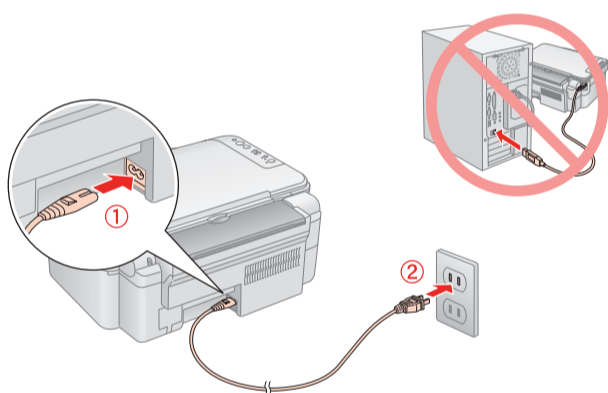


4

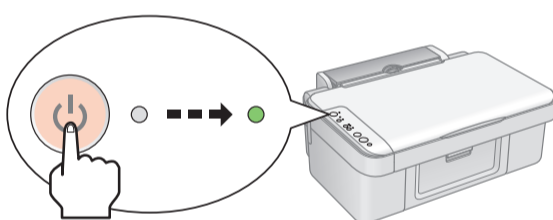


2.

1

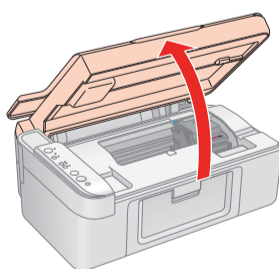


2



3.

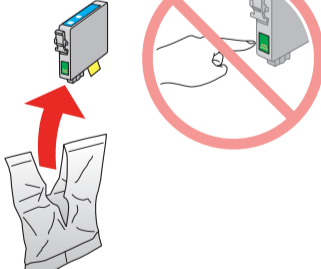
1



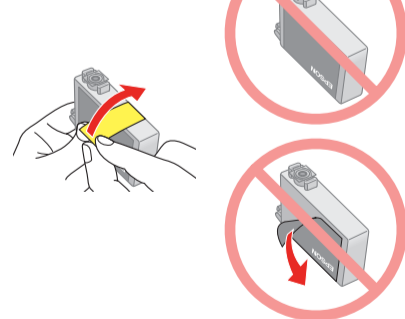
2



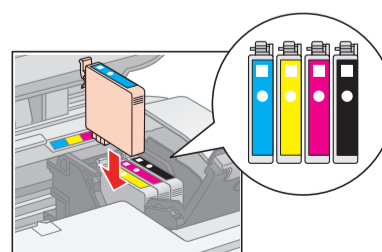
3



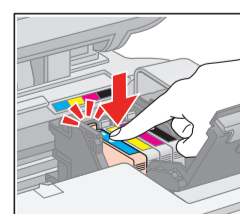
4



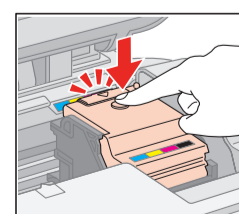
5



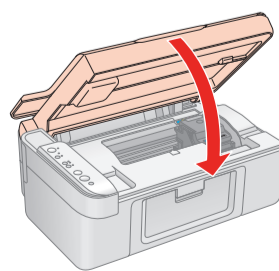
6



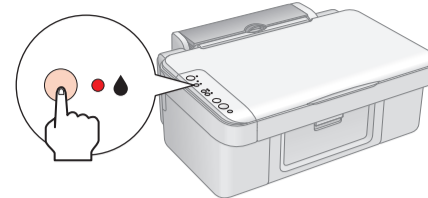
7



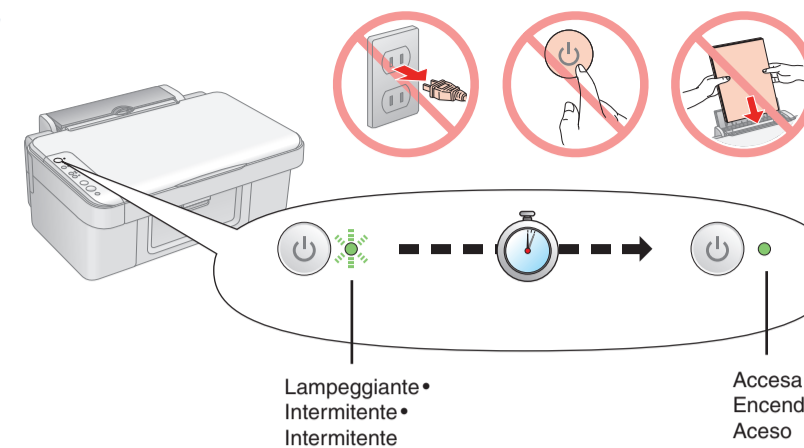
8



9



10



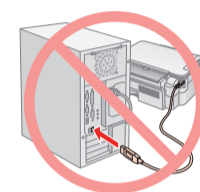
Attendere circa 1,5 min  
Espere unos 1,5 min  
Aguarde cerca de 1,5 minutos

**Nota:** Le cartucce d'inchiostro installate inizialmente in Epson Stylus vengono parzialmente utilizzate per il caricamento della testina di stampa. Le cartucce d'inchiostro successive rispetteranno la durata nominale completa.

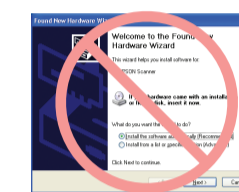
**Nota:** Los primeros cartuchos instalados en el Epson Stylus se utilizarán parcialmente para cargar el cabezal de impresión. Los siguientes cartuchos que coloque sí tendrán toda la duración prevista.

**Nota:** Os primeiros tinteiros instalados na Epson Stylus serão utilizados parcialmente para carregar a cabeça de impressão. A duração dos tinteiros subsequentes será a predeterminada.

4.

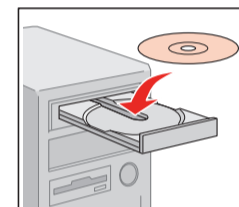


Non collegare il cavo USB fino a quando non viene richiesto.  
No conecte el cable USB hasta que se le indique.  
Não ligue o cabo USB até indicação em contrário.



Se viene visualizzata questa schermata, fare clic su **Cancel (Annulla)**.  
Si aparece esta pantalla, haga clic en **Cancel (Cancelar)**.  
Se aparecer o seguinte ecrã, faça clique em **Cancel (Cancelar)**.

1



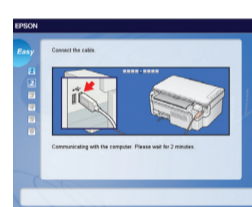
2



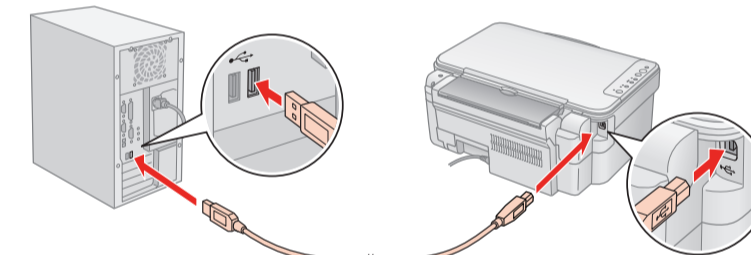
Nessuna schermata di installazione? →  
¿No aparece la pantalla de instalación? →  
Não aparece o ecrã de instalação? →



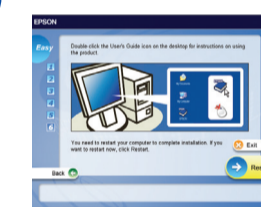
3



4



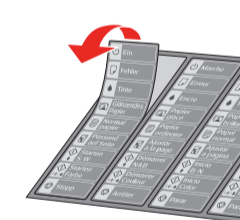
5



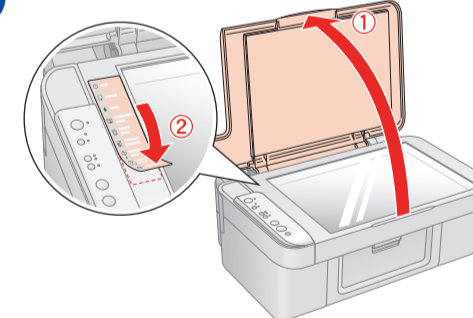
1



2



3



Ottenere ulteriori informazioni • Cómo obtener más información • Obter Mais Informações

