

Support Bulletin

Product: StylusRIP Professional v2 (for SP2100, SP4000, SP7600, SP9600)
Subject: StylusRIP Pro Updater version 2.08B for Vista Support

EN	At present, this document is only available in English.
DE	Dieses Dokument ist gegenwärtig nur in Englisch verfügbar.
FR	A ce jour, ce document n'est disponible qu'en anglais.
IT	Attualmente questo documento è disponibile solo in lingua inglese.
PO	Atualmente este documento está unicamente disponível em inglês
ES	Atualmente este documento sólo está disponible en inglés.
NL	Dit document is op dit moment alleen in Engels verkrijgbaar.

This document explains how to install, on computer running Windows Vista systems, Postscript Printer Description files (PPD) for the Epson StylusRIP professional v2 for SP2100, SP4000, SP7600 or SP9600.

1. Disk contents:

Product: EPSON StylusRIP Professional v2 (SRP2)
 Updater Version: 2.08B
 Supported OS (Windows): 98SE / Me / 2000 / XP / Vista
 Supported Printers: Stylus Photo 2100 ; Stylus Pro 4000 / 7600 / 7800
 Supported Languages: English / French / German / Italian / Portuguese / Spanish

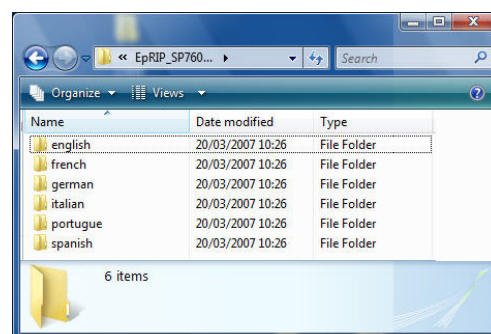
2. Modified items:

To avoid any problem when printing using the Epson StylusRIP professional v2 application on Windows Vista Operating Systems, you need to install and use PPD files designed for Vista support.
 “StylusRIP Pro Updater version 2.08B” package provides the needed resources for Windows Vista support.

3. How to Install these PPD files on your Vista computer:

Before starting the installation process, you need to download the “StylusRIP Pro Update version 2.08B” archive file for your printer model (i.e. SP7600) from the Epson web site and to extract the content of this archive file onto your local Hard Drive.

When it is done, you normally have one folder containing the PPD resources files for the 6 supported languages.

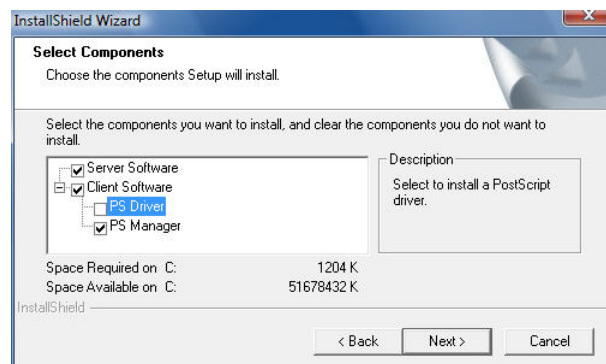


Step 1: Epson StylusRIP Pro installation

If the StylusRIP Pro application is not installed on your Vista computer, you need to install it firstly.

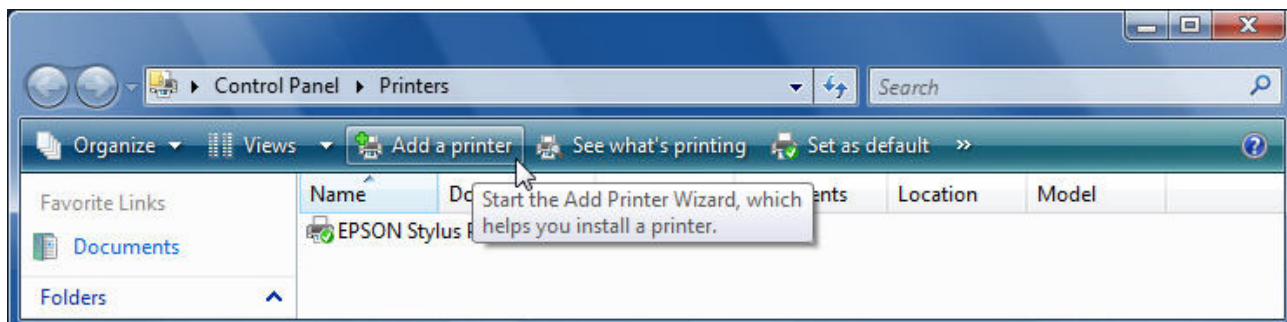
To avoid any problem, you can disable the installation of the PS Driver files.

Complete the StylusRIP Pro installation process and then, if needed, restart your computer.

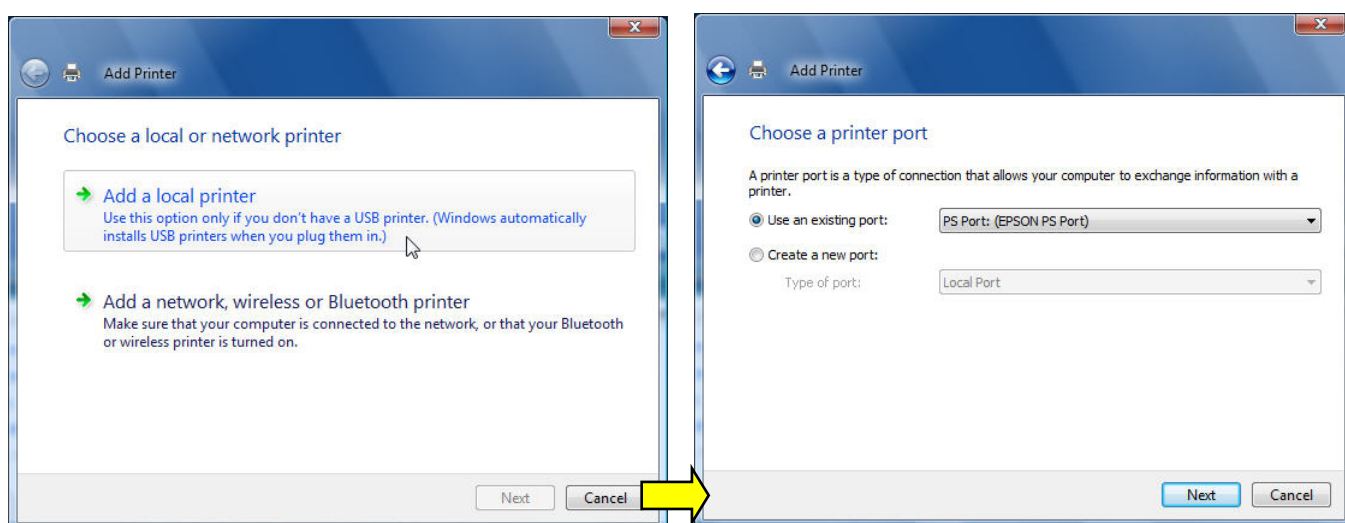


Step 2: Add a PostScript printer

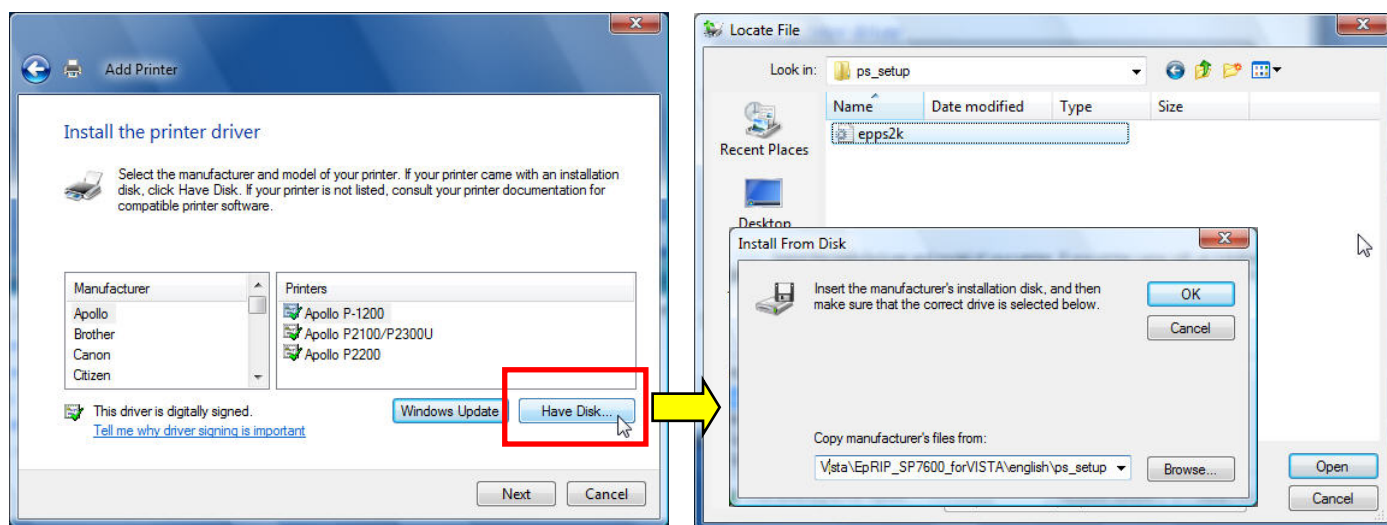
Once the SRP2 is installed, open the Control Panel → Printers menu and start the “Add a Printer” wizard.



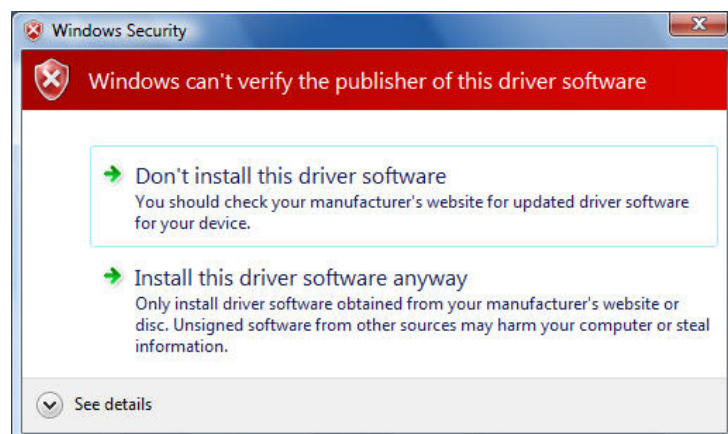
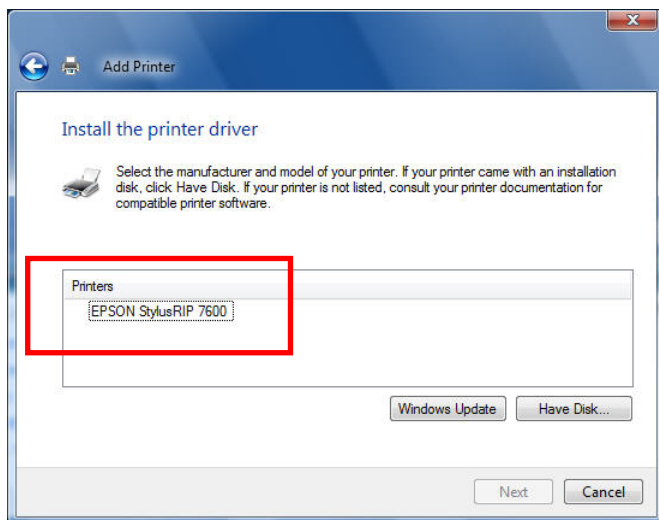
Add a local printer, and then select the PS Port (Epson PS Port) as printer port.
This PS Port is created during the PS Server (Server software) installation process.



From the “Install the printer driver” menu, click the “Have Disk” button and Open the PPD installer file (epps2k.inf) that correspond to your language from the location where you extracted the “StylusRip Pro Update version 2.08B” files.
 i.e. C:\Program Files\Epson\StylusRip Pro\SP7600_forVista\English\ps_setup folder

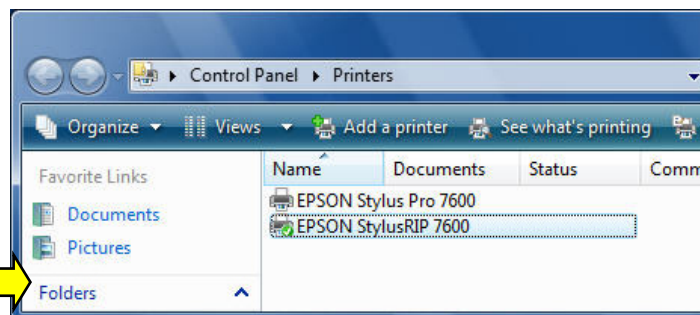
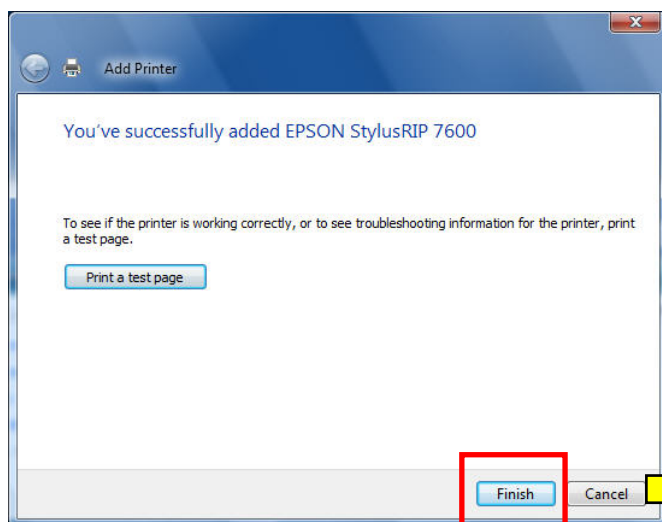


Select the printer model that you want to install and then click the next button to start the PS Driver installation process.



If this warning message appears, click on "Install anyway" to force the installation process.

Installation is now completed and the new Epson StylusRIP 7600 postscript printer can be seen and configured from the Control Panel → Printers menu.



Step 3: Printing from applications

It is now possible to use this Epson StylusRIP 7600 postscript printer to send print jobs to the Epson PS Server application through your own imaging application (i.e. Adobe Photoshop).

