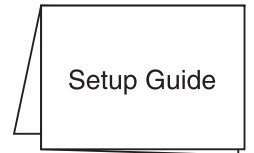
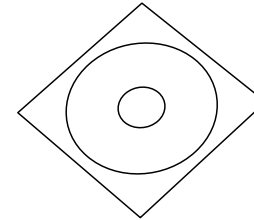
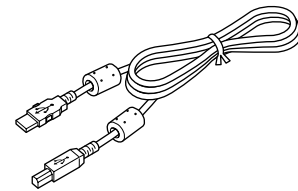
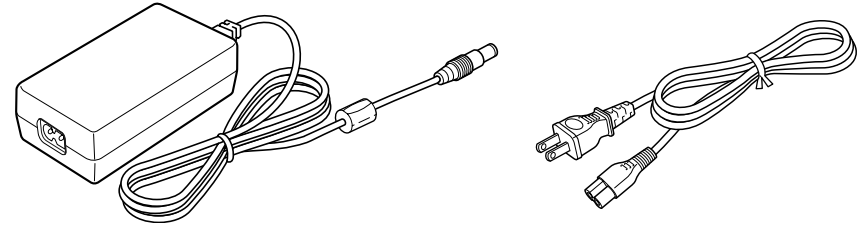
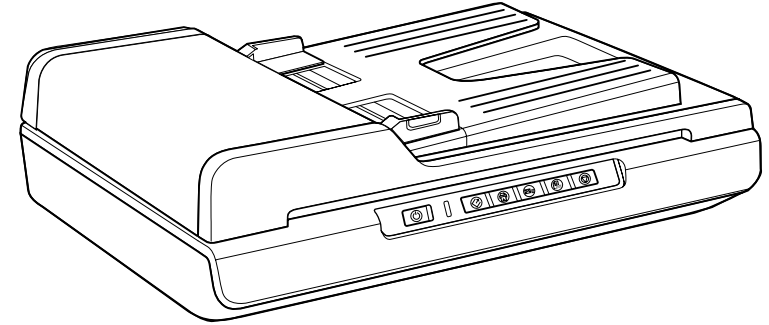


EN	Setup Guide
DE	Installationshandbuch
FR	Guide d'installation
IT	Guida di installazione
ES	Guía de instalación
PT	Manual de instalação
NL	Installatiehandleiding
DA	Installationsvejledning
FI	Asennusopas
NO	Installeringshåndbok
SV	Installationshandbok
CS	Instalační příručka
HU	Üzembe helyezési útmutató
PL	Podręcznik konfiguracji i instalacji
SK	Inštalčná príručka
BG	Ръководство за инсталация
RO	Ghid de instalare
ET	Seadistusjuhend
LV	Uzstādīšanas instrukcija
LT	Parengties vadovas
EL	Οδηγός εγκατάστασης
TR	Kurulum kılavuzu
SL	Priročnik za namestitev
HR	Vodič za postavu
MK	Упатство за поставување
SR	Uputstvo za postavljanje
RU	Руководство по установке
UK	Посібник користувача
KK	Орнату нұсқаулығы

دليل الإعداد
راهنمای تنظیم



DE: Maschinenlärminformations-Verordnung 3. GPSGV: Der höchste Schalldruckpegel beträgt 70 dB(A) oder weniger gemäß EN ISO 7779.

Das Gerät ist nicht für die Benutzung am Bildschirmarbeitsplatz gemäß BildschirmV vorgesehen.



Printed in XXXXXX



411328700

EN For detailed information and safety recommendations, refer to the User's Guide (installed with the software).

DE Ausführliche Informationen und Sicherheitsempfehlungen finden Sie im Benutzerhandbuch, das mit der Software installiert wurde.

FR Pour plus d'informations et des recommandations concernant la sécurité, reportez-vous au Guide de l'utilisateur (installé avec le logiciel).

IT Per informazioni dettagliate e suggerimenti sulla sicurezza consultare la Guida per l'utente installata con il software.

ES Para obtener información detallada y recomendaciones sobre seguridad consulte la Guía de usuario (instalada con el software).

PT Para mais informações e recomendações sobre segurança, consulte o Manual do Utilizador (instalado com o software).

NL Raadpleeg de gebruikershandleiding (geïnstalleerd met de software) voor meer informatie en veiligheidsvoorschriften.

DA Der findes yderligere oplysninger og anbefalinger om sikkerhed i brugervejledningen (installeret sammen med softwaren).

FI Lisätietoja ja turvaohjeita on Käyttöoppaassa (asennetaan ohjelmiston kanssa).

NO Hvis du vil ha mer detaljert informasjon og sikkerhetsanbefalinger, kan du se i brukerhåndboken (som installeres med programvaren).

SV Detaljerad information och säkerhetsföreskrifter finns i Användarhandboken (installeras tillsammans med programmet).

CS Podrobné informace a bezpečnostní doporučení najdete v Uživatelské příručce (instaluje se společně se softwarem).

HU Részletes információk és a biztonsággal kapcsolatos tudnivalók a szoftverrel együtt telepített használati útmutatóban találhatók.

PL Szczegółowe informacje oraz zalecenia dotyczące bezpieczeństwa zawiera Podręcznik użytkownika (instalowany razem z oprogramowaniem).

SK Podrobné informácie a bezpečnostné odporúčanie nájdete v Uživatelskej príručke (inštaluje sa spolu so softvérom).

BG Подробна информация и препоръки за безопасност ще намерите в Ръководството за потребителя (инсталирано със софтуера).

RO Pentru informații detaliate și recomandări cu privire la siguranță, consultați User's Guide (Ghidul utilizatorului instalat cu software-ul).

ET Lähemat teavet ja ohutusälaseid soovitusi vt (koos tarkvaraga installeeritud) kasutusjuhendist User's Guide.

LV Sikāku informāciju un ieteikumus par drošību skat. Lietotāja rokasgrāmatā (tiek instalēta kopā ar programmu).

LT Detalesnės informacijos ir saugos patarimų ieškokite vartotojo vadove (diegtame kartu su programine įranga).

EL Για περισσότερες πληροφορίες και συστάσεις για την ασφάλεια, ανατρέξτε στον Οδηγό χρήσης (εγκαταστάθηκε μαζί με το λογισμικό).

TR Ayrıntılı bilgi ve güvenlik önerileri için lütfen (yazılımla yüklenmiş olan) Kullanım Kılavuzu'na bakın.

SL Podrobnejše informacije in varnostna priporočila najdete v uporabniškem priročniku (namesti se skupaj s programsko opremo).

HR Detaljne informacije i preporuke o sigurnosti pogledajte u Korisničkom priručniku (instaliranom sa softverom).

MK За подетални информации и препораки за безбедноста видете во „Корисничкиот прирачник“ (што се инсталира заедно со софтверот).

SR Za detaljne informacije i mere bezbednosti pogledajte Korisničko uputstvo (instalirano zajedno sa softverom).

RU Для получения подробных сведений и рекомендаций по безопасности см. Руководство пользователя (поставляется вместе с программным обеспечением).

UK За докладнішою інформацією та порадами щодо безпеки звертайтеся до Посібника користувача (що інстальється разом з програмою).

KK Толық ақпарат пен қауіпсіздік ұсыныстары үшін Пайдаланушы нұсқаулығын қараңыз (бағдарламалық құралмен бірге орнатылған).

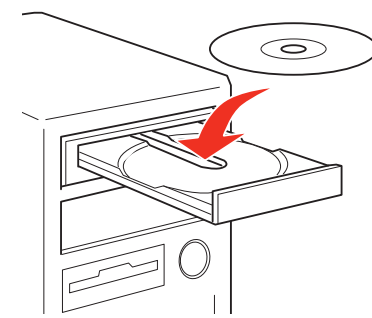
الحصول على معلومات مفصلة وتوصيات الأمان، ارجع إلى User's Guide (دليل المستخدم) (المثبت مع البرنامج)

برای اطلاعات مشروح به راهنمای مراجعه (با نرم افزار نصب شده) رجوع شود.

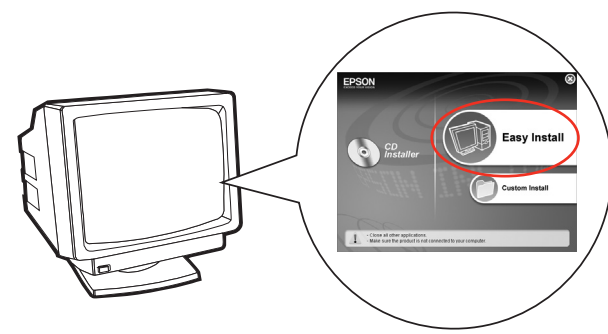
1



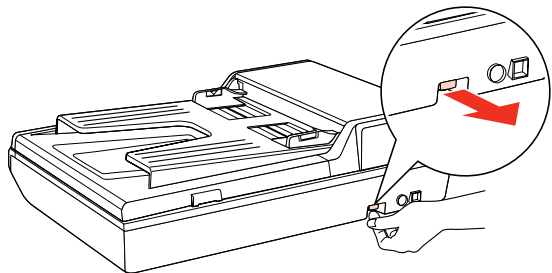
1



2

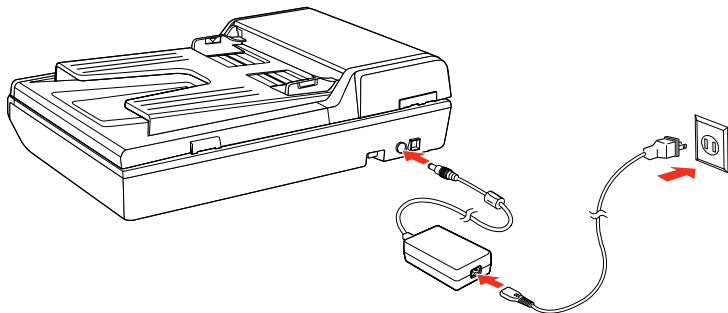


2

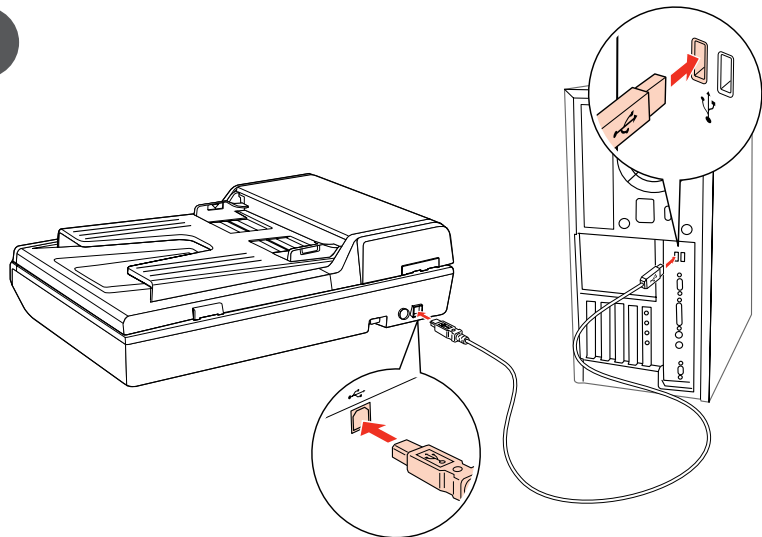


3

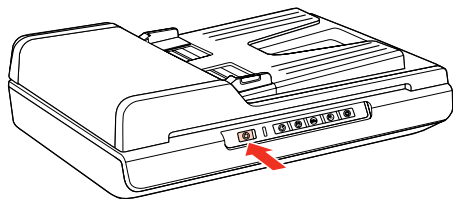
1



2

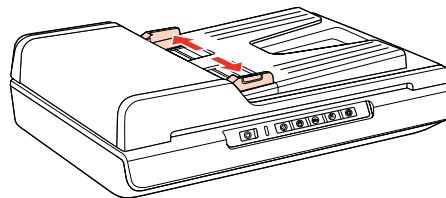


3

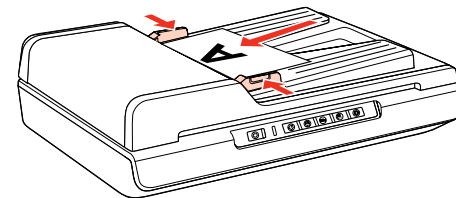


4

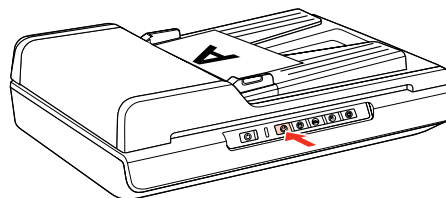
1



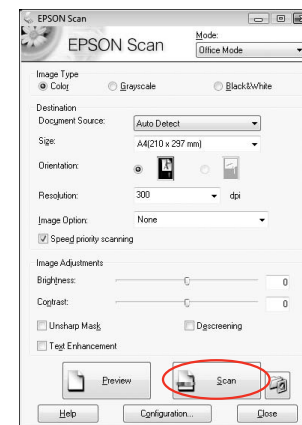
2



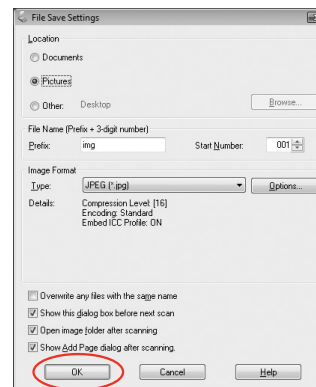
3



4



5





A screenshot of the EPSON Scan software window. The window title is 'EPSON Scan' and the mode is set to 'Office Mode'. The interface includes sections for 'Image Type' (Color, Grayscale, Black&White), 'Destination' (Document Source: Auto Detect, Size: A4(210 x 297 mm), Orientation), 'Resolution' (300 dpi), 'Image Option' (None), and 'Image Adjustments' (Brightness, Contrast, Unsharp Mask, Text Enhancement, Descreening). At the bottom, there are buttons for 'Preview', 'Scan', 'Help', 'Configuration...', and 'Close'. The 'Help' button is circled in red, and a hand cursor is pointing at it from below.

A screenshot of an EPSON Driver's Help document. The title is 'Office Mode Main Window/Scan to PDF Settings Dialog Box'. The document contains a table of contents with the following items:

- Image Type (Office Mode/Scan to PDF Settings Dialog Box)
- Document Settings (Office Mode/Scan to PDF Settings Dialog Box)
- Image Adjustment (Office Mode/Scan to PDF Settings Dialog Box)
- Explanation of Button

Below the table of contents, there is explanatory text: 'The Office Mode Main Window and Scan to PDF Settings Dialog Box are explained here.', 'The Office Mode appears when your scanner supports (for some models, an attachment is needed) the Auto Document Feeder.', and 'The Scan to PDF Settings Dialog Box appears only when the Scan to PDF button is on your scanner.' A 'Note' section is also present at the bottom.

<http://www.epson.com>

A hand cursor icon pointing upwards towards the URL.