

1. PC environment

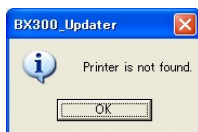
Win2000 / XP / Vista

2. Instruction

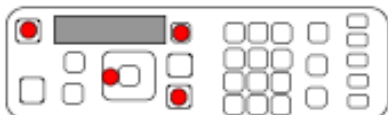
- 1) Download "Firmware Update Tool" (BX300firm_update.exe) from EPSON Web site.
- 2) Connect Power supply cable to the printer.
- 3) Connect the printer to PC with USB cable.

[NOTE]

Following error message is displayed on screen if USB cable is not connected to the printer.

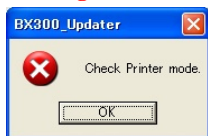


- 4) Push [Power] button while holding [Stop], [Left] and [Color] button to enter the firmware updating mode.

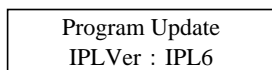


[NOTE]

Following error message is displayed on screen if it cannot enter the firmware updating mode.



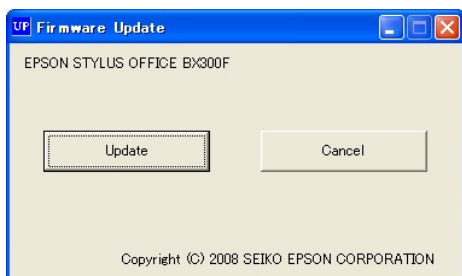
- 5) Confirm that the following screen is displayed on LCD.



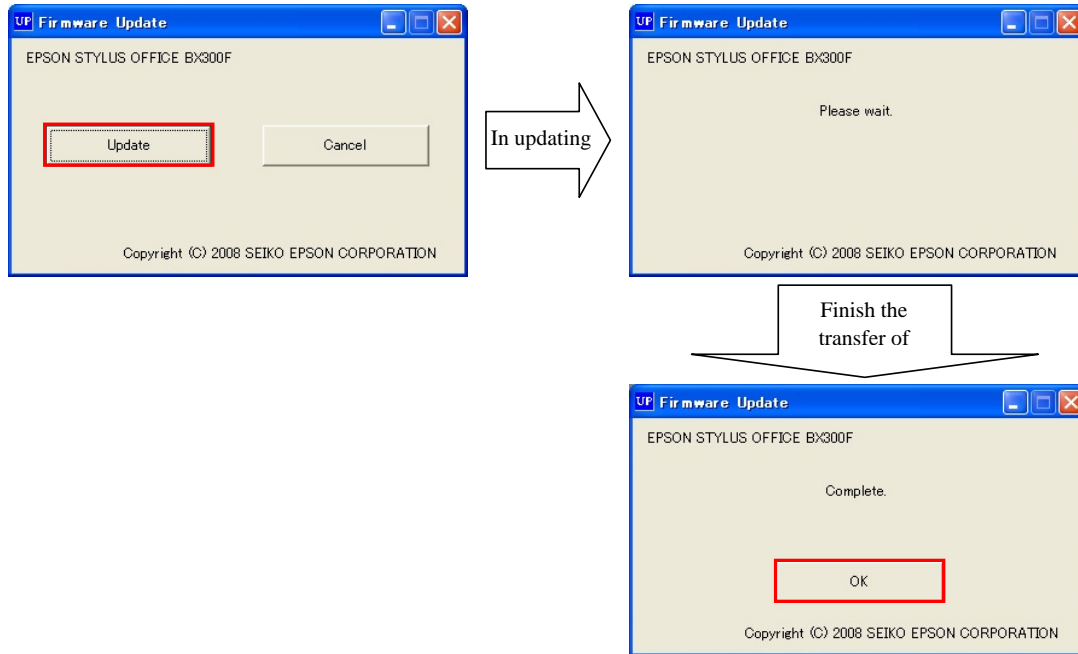
- 6) Confirm that the screen in above 5) is automatically changed to the following screen in 3sec.



- 7) Open "Firmware Update Tool" (BX300firm_update.exe).



8) Click "Update" button to start the firmware updating, and click "OK" button if "Complete" message is displayed on the screen.



9) Confirm that the following screen is displayed on LCD when the firmware updating is finished.

Program Update
FINISHED

[NOTE]

Although the transfer of the firmware data is finished in seconds, the firmware updating time of printer is approx

10) Confirm that the screen in above 8) is automatically changed to the following screen in 3sec..

And, confirm that SUMCODE / VERSION in red is displayed on LCD.

SUMCODE **6CEF**
VERSION **TT068A**

11) Push "OK" button to turn off the power automatically.

[NOTE]

***Please note that these steps to be safe from sudden breakout of electric power while you are updating firmware.**

***Be sure power plug to avoid loose connection and please consider the power point keeps safe connection.**

Also please don't plug phone line cable into printer's connector.

***Please plug the printer as only peripheral from your host PC.**

When the hardware wizard appears on your PC desktop, please exit from the wizard by pushing "CANCEL" button.

***Don't do these steps when you expect any surge or breakout of electric power due to thunders or any other reason.**

***Please don't power off until you finish whole updating process.**

***If there were any accidental occasion to stop updating steps, in worst case the printer would not work correctly.**

***Please contact your service desk when you had any accidental stopping of power line while you are processing the steps for updating the printer firmware.**