

EPSON PERFECTION™ V30/V300 PHOTO

Start Here • Démarez ici • Hier starten • Hier beginnen •
 Inizia qui • Para empezar • Começar por aqui •
 Buradan Başlayın • Ξεκινήστε εδώ



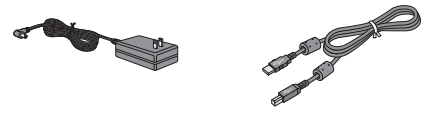
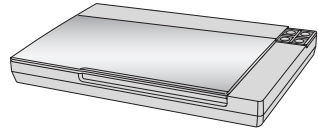
411395600

Printed in XXXXXX

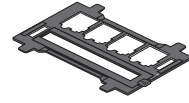
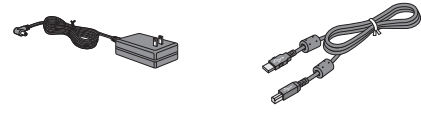
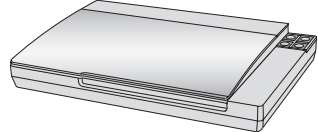


1.

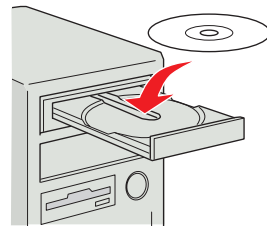
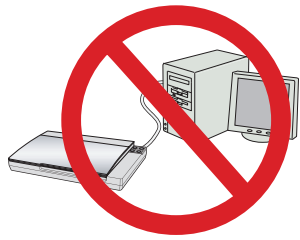
Perfection V30



Perfection V300 Photo



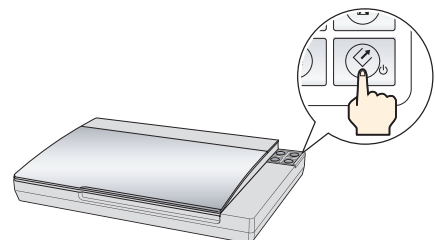
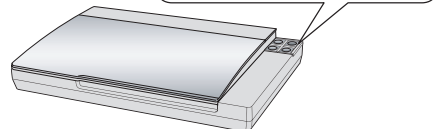
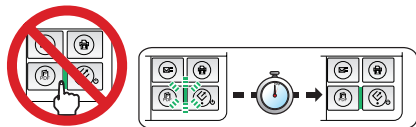
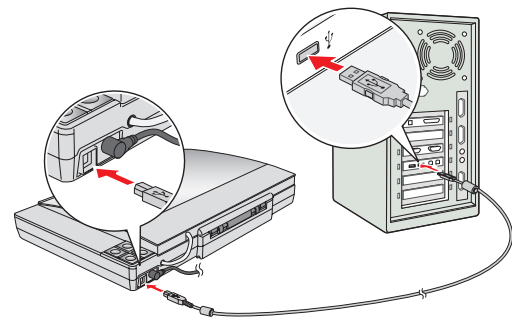
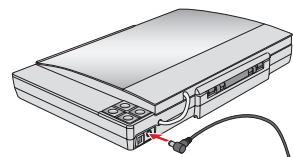
2.



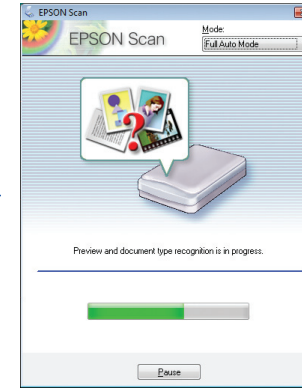
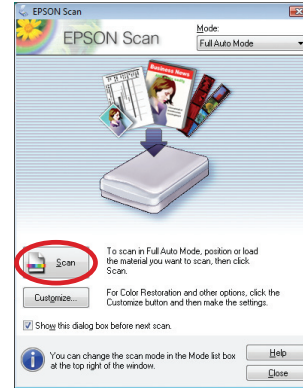
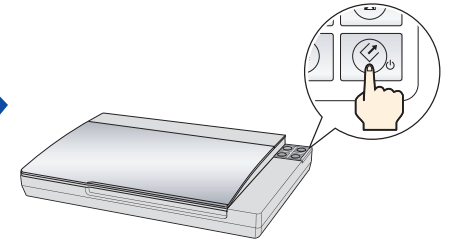
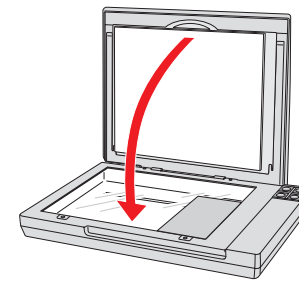
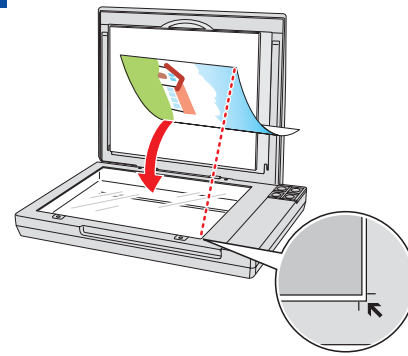
Do not connect the USB cable yet.
 Ne raccordez pas encore le câble USB.
 Schließen Sie das USB-Kabel noch nicht an.
 Sluit de USB-kabel nog niet aan.
 Non collegare adesso il cavo USB.

No conecte todavía el cable USB.
 Não ligue ainda o cabo USB.
 USB kablosunu henüz takmayın.
 Μην συνδέσετε ακόμα το καλώδιο USB.

3.



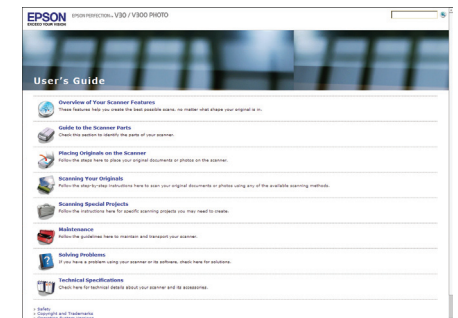
4.



To turn off the scanner, exit the scanner software, then press and hold the Power button for 3 seconds.
 Pour mettre le scanner hors tension, quittez le logiciel du scanner, puis maintenez la touche marche/arrêt enfoncée pendant 3 secondes.
 Um den Scanner auszuschalten, sollten Sie zuerst die Scannersoftware beenden und dann die Ein-/Aus-Taste 3 Sekunden lang gedrückt halten.
 Sluit de scansoftware af en houd de Aan/uit-knop 3 seconden ingedrukt om de scanner uit te schakelen.
 Per spegnere lo scanner, uscite dal programma, quindi premere senza rilasciare il pulsante di accensione per 3 secondi.

Para apagar el escáner, salga del software del escáner y mantenga pulsado el botón de encendido durante 3 segundos.
 Para desligar o Digitalizador, desligue o software do Digitalizador e pressione e mantenha o botão Funcionamento por 3 segundos.
 Ταράγισιγυ κρραττμκ ικκιν ταραγικυ γαζιλμινδαν κικιν, αρδιανδαν Γυζ δυγγμεσινι 3 σανιγε βασλι τυτυν.
 Για να απενεργοποιήσετε το σαρωτή, επιλέξτε έξοδο από το λογισμικό του σαρωτή, κατόπιν πιέστε και κρατήστε πατημένο το κουμπί λειτουργίας για 3 δευτερόλεπτα.

Getting More Information •
 Obtenir des informations complémentaires •
 Weitere Informationsquellen • Meer informatie •
 Ulteriori informazioni • Más información •
 Obter Mais Informações • Daha Fazla Bilgi Alma •
 Περισσότερες πληροφορίες



Maschinenlärminformations-Verordnung 3. GPSGV: Der höchste Schalldruckpegel beträgt 70 dB(A) oder weniger gemäß EN ISO 7779.
 Das Gerät ist nicht für die Benutzung am Bildschirmarbeitsplatz gemäß Bildschirmarbeitsverordnung vorgesehen.