

EPSON PERFECTION™ V30/V300 PHOTO

Start Here • Rozpocznij tutaj • Začínáme • Itt kezdje • Prvé kroky • Începeți aici • Започнете оттук • Săciet šeit • Pradėkite čia • Alusta siit

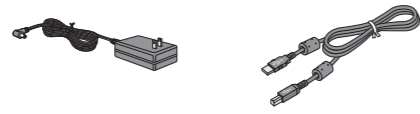
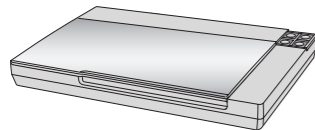


411395700

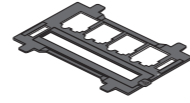
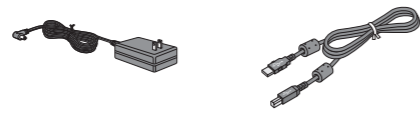
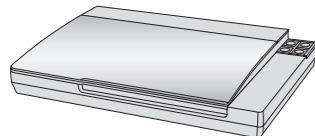
Printed in XXXXXX



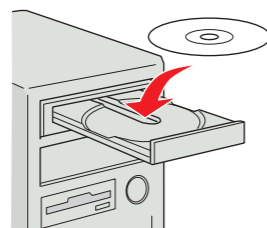
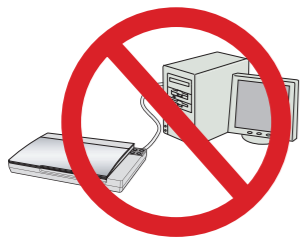
1. Perfection V30



Perfection V300 Photo



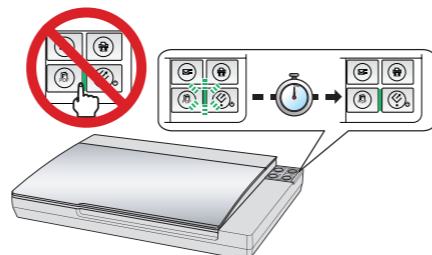
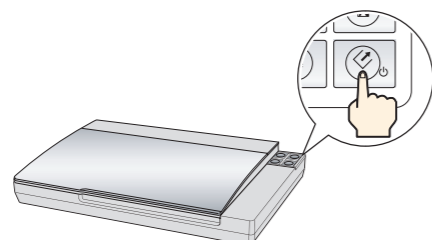
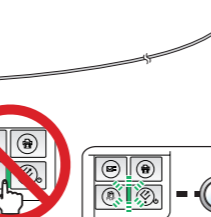
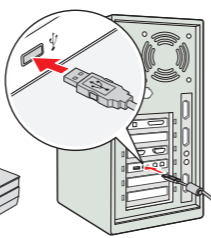
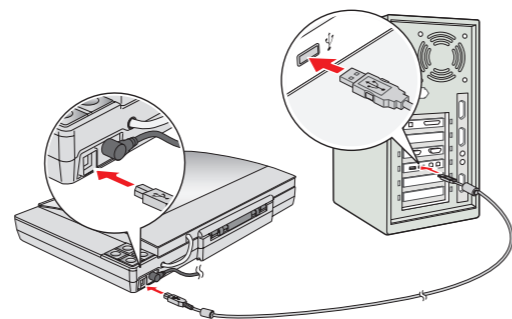
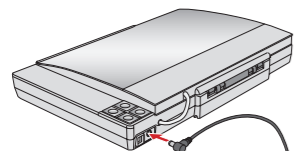
2.



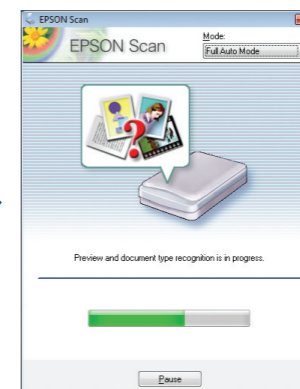
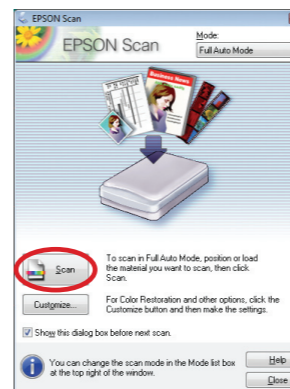
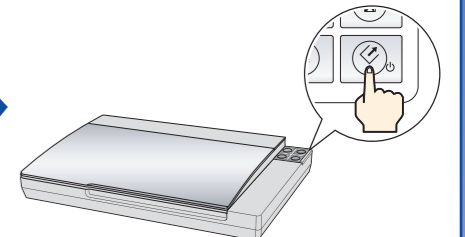
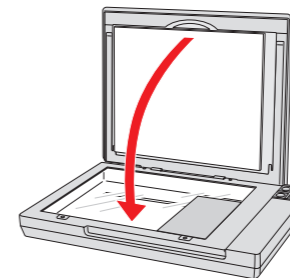
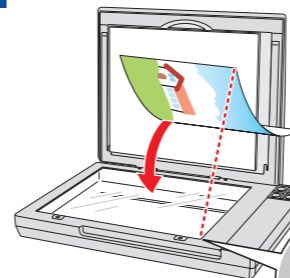
Do not connect the USB cable yet.
Nie podłączaj jeszcze kabla USB.
V tomto okamžiku ještě nepřipojujte kabel USB.
Még ne csatlakoztassa az USB-kábelt.
Zatiaľ nezapájajte kábel USB.

Deocamdată nu conectați cablul USB.
Не свързвайте още USB кабела.
Vél neprieveuojiet USB kabeli.
Kol kas USB kabelio neprijunkite.
Ärge USB-kaablit veel ühendage.

3.



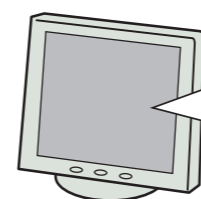
4.



To turn off the scanner, exit the scanner software, then press and hold the Power button for 3 seconds.
W celu wyłączenia skanera zamknij jego oprogramowanie, a następnie naciśnij i przytrzymaj przez 3 sekundy przycisk zasilania.
Chcete-li skener vypnout, ukončete software skeneru a poté stiskněte tlačítko napájení a přidrže ho na 3 sekundy.
A lapolvasó kikapcsolásához lépjen ki a lapolvasóprogramból, majd nyomja le és 3 másodpercig tartsa lenyomva a Bekapcsoló gombot.
Ak chcete skener vypnúť, ukončíte softvér skenera a potom stlačte a 3 sekundy podržte tlačidlo napájania.

Pentru a opri scannerul, ieșiți din aplicația software a scannerului, apoi apăsați pe butonul de alimentare și țineți apăsat timp de 3 secunde.
За да изключите скенера, затворете неговия софтуер, след което натиснете и задръжте за 3 секунди бутона Захранване.
Lai izslēgtu skeneri, izejiet no skenera programmatūras, tad nospiediet ieslēgšanas pogu un turiet to nospiestu 3 sekundes.
Norėdami išjungti skaitytuvą, uždarykite jo programinę įrangą ir paspaudę 3 sekundes palaikykite maitinimo jungiklį.
Skanneri väljalülitamiseks väljuge skanneri tarkvarast, seejärel vajutage ja hoidke 3 sekundi jooksul toitenuppu all.

Getting More Information • Uzyskiwanie dodatkowych informacji • Další informace • További információ • Další informace • Cum se obțin mai multe informații • Получаване на повече информация • Kā iegūt plašāku informāciju • Kaip gauti daugiau informacijos • Lisateave



XXXXX Manual

