

Contents

Safety Instructions

Warnings, Cautions, and Notes	4
Important Safety Instructions	4

Printer Parts and Functions

Control Panel Functions	10
Understanding the LCD screen	11
Printer Parts	12

Preparing to Print

Inserting a Memory Card	13
Loading Paper	16
Paper Handling Instructions	17
Inserting a CD/DVD into the CD/DVD Drive (PictureMate PM 290 Only)	18
Choosing a Photo Source	19

Basic Photo Printing

Changing the View of Photos on the LCD Screen	20
Printing Selected Photos	20

Printing Groups of Photos	20
Printing Enlarged Photos	21
Printing Camera-Selected DPOF Photos	22

Printing Options

Making Paper and Print Layout Settings	23
Editing Your Photo	23

Printing From an External Device

Printing From an External Drive	26
Printing From a PictBridge-Enabled Camera	28

Printing with BLUETOOTH

About the BLUETOOTH	30
BLUETOOTH settings	31
Printing	33
Using the Optional BLUETOOTH Photo Print Adapter (Pic- tureMate PM 260 Only)	33

PictureMate Preferences

Settings 35

Saving Your Photos (Backup)

Saving Photos to the External Device 36

Saving Photos to the CD (PictureMate PM 290 Only) . 38

Replacing the PicturePack (Photo Cartridge)

Checking the PicturePack Status 41

Replacing the PicturePack 41

Transporting PictureMate

Packing 46

Using the Optional Battery 47

Maintaining PictureMate

Checking and Cleaning the Print Head Nozzles 50

Aligning the Print Head 51

Cleaning PictureMate 52

Troubleshooting

Error/Warning Messages 53

Printer Power Problems 54

Print and Noise Problems 55

Photo Quality Problems 56

Problems With Paper Feeding 57

Miscellaneous Printout Problems 58

Contacting Customer Support

Regional Customer Services 59

PicturePack , Paper, and Options

PicturePack and Paper 60

Options 60

Printer Specifications 62

Summary of Panel Settings 68

Index 71

Photo Printer

PictureMate™ PM 260 / PM 290

No part of this publication may be reproduced, stored in a retrieval system, or transmitted in any form or by any means, electronic, mechanical, photocopying, recording, or otherwise, without the prior written permission of Seiko Epson Corporation. The information contained herein is designed only for use with this Epson printer. Epson is not responsible for any use of this information as applied to other printers.

Neither Seiko Epson Corporation nor its affiliates shall be liable to the purchaser of this product or third parties for damages, losses, costs, or expenses incurred by the purchaser or third parties as a result of accident, misuse, or abuse of this product or unauthorized modifications, repairs, or alterations to this product, or (excluding the U.S.) failure to strictly comply with Seiko Epson Corporation's operating and maintenance instructions.

Seiko Epson Corporation shall not be liable for any damages or problems arising from the use of any options or any consumable products other than those designated as Original Epson Products or Epson Approved Products by Seiko Epson Corporation.

Seiko Epson Corporation shall not be held liable for any damage resulting from electromagnetic interference that occurs from the use of any interface cables other than those designated as Epson Approved Products by Seiko Epson Corporation.

EPSON® is a registered trademark and PictureMate™ and Exceed Your Vision are trademarks of Seiko Epson Corporation.

PRINT Image Matching™ and the PRINT Image Matching logo are trademarks of Seiko Epson Corporation. Copyright © 2001 Seiko Epson Corporation. All rights reserved.

USB DIRECT-PRINT™ and the USB DIRECT-PRINT logo are trademarks of Seiko Epson Corporation. Copyright © 2002 Seiko Epson Corporation. All rights reserved.

DPOF™ is a trademark of CANON INC., Eastman Kodak Company, Fuji Photo Film Co., Ltd. and Matsushita Electric Industrial Co., Ltd.

The BLUETOOTH® word mark and logos are owned by the Bluetooth SIG, Inc. and licensed to Seiko Epson Corporation.

Zip® is a registered trademark of Iomega Corporation.

SDHC™ is a trademark.

Memory Stick, Memory Stick Duo, Memory Stick PRO, Memory Stick PRO Duo, Memory Stick Micro, MagicGate Memory Stick, and MagicGate Memory Stick Duo are trademarks of Sony Corporation. xD-Picture Card™ is a trademark of Fuji Photo Film Co., Ltd.

General Notice: Other product names used herein are for identification purposes only and may be trademarks of their respective owners. Epson disclaims any and all rights in those marks.

Copyright © 2007 Seiko Epson Corporation. All rights reserved.

Safety Instructions

Warnings, Cautions, and Notes



Warnings

must be followed carefully to avoid bodily injury.



Cautions

must be observed to avoid damage to your equipment.

Notes

contain important information and useful tips on the operation of your printer.

Important Safety Instructions

Read all of the instructions in this section before using your printer. Also, be sure to follow all warnings and instructions marked on the printer.

When choosing a place for the printer

Observe the following when choosing a place for the printer:

- Place the printer on a flat, stable surface that extends beyond the base of the printer in all directions. If you place the printer by the wall, leave more than 10 cm between the back of the printer and the wall. The printer will not operate properly if it is tilted at an angle.
- When storing or transporting the printer, do not tilt it, stand it on its side, or turn it upside down. Otherwise, ink may leak from the cartridge.
- Leave enough space in front of the printer for the paper to be fully ejected.
- Avoid places subject to rapid changes in temperature and humidity. Also, keep the printer and the AC adapter away from direct sunlight, strong light, water, or heat sources.
- Do not leave the printer in a place subject to high temperature, such as in a car. Also, keep the printer away from direct sunlight, strong light, and heat sources. Otherwise, the printer may be damaged or ink may leak.
- Avoid places subject to dust, shock, or vibration.

- ❑ Leave enough room around the printer to allow for sufficient ventilation.
- ❑ Place the AC adapter near a wall outlet where the plug can be easily unplugged.
- ❑ Do not place or store the printer and the AC adapter outdoors.

When setting up your printer

Observe the following when setting up the printer:

- ❑ Do not block or cover the vents and openings in the printer.
 - ❑ Power supply cords should be placed to avoid abrasions, cuts, fraying, crimping, and kinking. Do not place objects on top of power-supply cords and do not allow the AC adapter or power-supply cords to be stepped on or run over. Be particularly careful to keep all power-supply cords straight at the ends and the points where they enter and leave the AC adapter.
 - ❑ Use only the power-supply cords that comes with this product. Use of another cord may result in fire or electrical shock, or injury.
 - ❑ The AC adapter model A381H is designed for use with the printer with which it was included. Do not attempt to use it with other electronic devices unless specified.
- ❑ Use only the type of power source indicated on the AC adapter's label, and always supply power directly from a standard domestic electrical outlet with the AC power cord that meets the relevant local safety standards.



Warning:

Refer to the rating plate for the voltage and check that the appliance voltage corresponds to the supply voltage.

- ❑ Avoid using outlets on the same circuit as photocopiers or air control systems that regularly switch on and off.
- ❑ Avoid using electrical outlets controlled by wall switches or automatic timers.
- ❑ Keep the entire computer system away from potential sources of electromagnetic interference, such as loudspeakers or the base units of cordless telephones.
- ❑ Do not use a damaged or frayed power cord and the AC adapter.
- ❑ If you use an extension cord with the printer, make sure that the total ampere rating of the devices plugged into the extension cord does not exceed the cord's ampere rating. Also, make sure that the total ampere rating of all devices plugged into the wall outlet does not exceed the wall outlet's ampere rating.
- ❑ Never disassemble, modify, or attempt to repair the AC adapter, power cord, printer, and options by yourself except as specifically explained in the printer's guides. Doing so may result in injury, electric shock, or fire.

- ❑ Unplug the printer, and refer servicing to qualified service personnel under the following conditions:

The power cord or plug is damaged; liquid has entered the printer or the AC adapter; the printer or the AC adapter has been dropped or the casing damaged; the printer or the AC adapter does not operate normally or exhibits a distinct change in performance. (Do not adjust controls that are not covered by the operating instructions.)

- ❑ Do not use with wet hands.
- ❑ If you plan to use the AC adapter in Germany, the building installation must be protected by a 10 or 16 amp circuit breaker to provide adequate short-circuit protection and over-current protection for this printer.

For United Kingdom users

- ❑ **Important:** The wires in the mains lead fitted to this appliance are coloured in accordance with following code: Blue - Neutral, Brown - Live

If you have to fit a plug:

- ❑ As the colours of the mains lead of the appliance may not match the coloured markings used to identify the terminals in a plug, please observe the following:

The blue wire must be connected to the terminal in the plug marked with the letter N.

The brown wire must be connected to the terminal in the plug marked with the letter L.

- ❑ If damage occurs to the plug, replace the cord set or consult a qualified electrician.

When using the printer

Observe the following when using the printer:

- ❑ If you use the printer in places where the use of electronic devices is limited, such as in airplanes or hospitals, follow all instructions in those places.
- ❑ Do not insert objects through the slots in the printer.
- ❑ Take care not to spill liquid on the printer and the AC adapter.
- ❑ Do not put your hand inside the printer or touch the photo cartridge during printing.
- ❑ Do not use aerosol products that contain flammable gases inside or around this product. Doing so may cause fire.
- ❑ Always turn the printer off using the I/⊕ On button. Do not unplug the printer or turn off the power to the outlet until the power light goes out.
- ❑ Before transporting the printer, make sure that the photo cartridge is in place.
- ❑ Leave the photo cartridge installed. Removing the cartridge can dehydrate the print head and may prevent the printer from printing.

When using a memory card

- ❑ Use only memory cards compatible with the printer. See "Inserting a Memory Card" on page 13

When using LCD screen

- ❑ The LCD screen may contain a few small bright or dark spots, and because of its features it may have an uneven brightness. These are normal and do not indicate that it is damaged in any way.
- ❑ Only use a dry, soft cloth to clean the LCD screen. Do not use liquid or chemical cleansers.
- ❑ If the LCD screen on your printer's control panel is damaged, contact your dealer. If the liquid crystal solution gets on your skin, wash them thoroughly with soap and water. If the liquid crystal solution gets into your eyes, flush them immediately with water. If discomfort or vision problems remain after a thorough flushing, see a doctor immediately.

When using BLUETOOTH wireless technology (PictureMate PM 290 Only)

- ❑ Do not use this printer inside medical facilities or near medical equipment. Radio waves from this printer may adversely affect the operation of electrical medical equipment.

- ❑ Keep this printer at least 22 cm away from cardiac pacemakers. Radio waves from this printer may adversely affect the operation of cardiac pacemakers.
- ❑ Do not use this printer near automatically controlled devices such as automatic doors or fire alarms. Radio waves from this printer may adversely affect these devices, and could lead to accidents due to malfunction.
- ❑ If you use this printer on airplanes, where the use of electronic devices is limited, follow all instructions on the airplanes.

When using the optional BLUETOOTH Photo Print Adapter (PictureMate PM 260 Only)

Refer to the BLUETOOTH Photo Print Adapter's documentation for the safety instructions.

When using the optional battery

- If battery acid gets into your eyes or on your skin, immediately rinse the affected area thoroughly with water and seek medical treatment. If a battery is swallowed, seek medical treatment immediately.
- Use only an Epson Li-ion battery model D121A for this printer according to the directions in the user documentation. Replacing the battery with an incorrect model may cause an explosion.
- Use only AC adapter model A381H to charge the battery and operate the printer.
- Do not charge or use the battery with devices other than the specified product. Using the battery with other devices may damage the battery or other devices, or may cause an explosion.
- To protect against short circuits, do not remove the outside case of the battery.
- Do not handle the battery with wet hands or use them near water.
- Do not expose the battery to water or high humidity.
- Do not drop, puncture, disassemble, mutilate, or short-circuit the battery.
- Do not place the battery near or into fire or water.
- Do not use the battery that is leaking or damaged in any way.
- Do not charge the battery on devices except this printer.
- Do not charge the battery near open flame or in very hot locations.
- Keep the battery away from heat sources.
- Do not leave the battery in a vehicle to prevent the battery from overheating.
- Do not insert objects into any openings as they may touch dangerous voltage points or short-circuit components.
- Prevent the battery from coming into contact with metal objects that could short-circuit it, such as coins or keys.
- Do not solder wires or terminals directly to the battery.
- Do not touch battery terminals.
- Keep the battery away from open flame if they leak or smell strange.
- If overheating, discoloration, or deformation occur, remove the battery from the printer and do not use it.
- Charge the battery before using it if it has not been used for a long period.

When storing the optional battery

- ❑ When not using the printer for a long period of time, remove the battery from the printer and store them separately to avoid over-discharging the battery.
- ❑ Do not store the battery where the temperature or humidity is very high.
- ❑ Store the battery out of children's reach.

When disposing of the optional battery

Before disposing of the battery, make sure you discharge them completely.



Warning:

- ❑ *Do not dispose of batteries as ordinary refuse. Instead, dispose of them in a collection or recycle box in accordance with local laws.*
- ❑ *Do not incinerate or dispose of the battery in fire.*

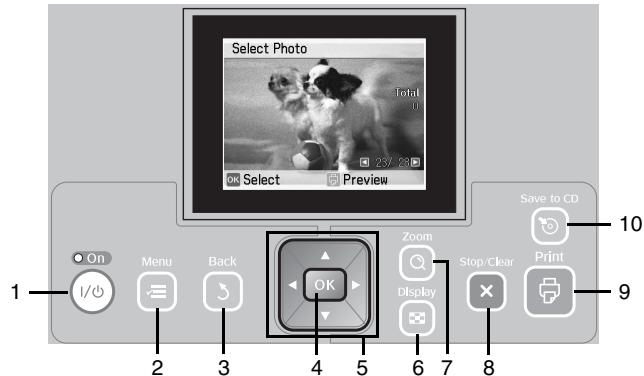
When handling photo cartridges

Observe the following when handling photo cartridges:

- ❑ Do not shake photo cartridge after removing it from the bag; this can cause leakage.
- ❑ Do not remove or tear the label on the cartridge; this can cause leakage.
- ❑ Use the photo cartridge before the date printed on the cartridge carton.
- ❑ Do not dismantle photo cartridges or try to refill them. This could damage the print head.
- ❑ After bringing a photo cartridge inside from a cold storage site, allow it to warm up at room temperature for at least three hours before using it.
- ❑ Store photo cartridges in a cool, dark place.
- ❑ The IC chip on the photo cartridge retains a variety of cartridge-related information, such as the photo cartridge status so that the cartridge may be removed and reinstalled freely.

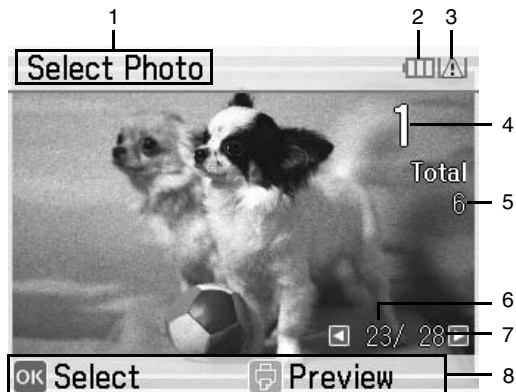
Printer Parts and Functions

Control Panel Functions



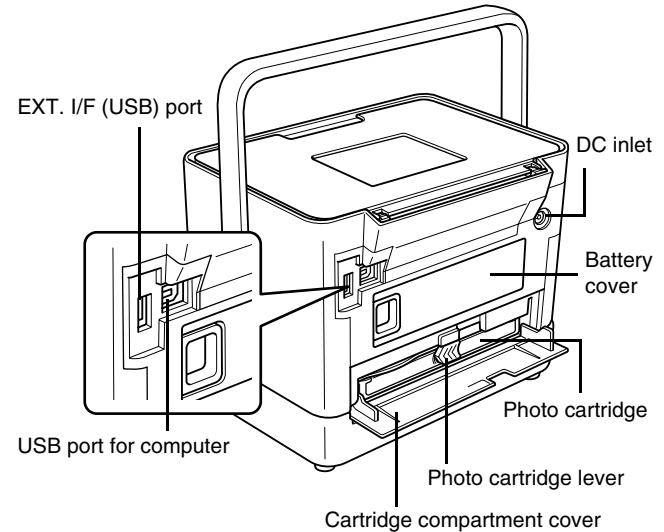
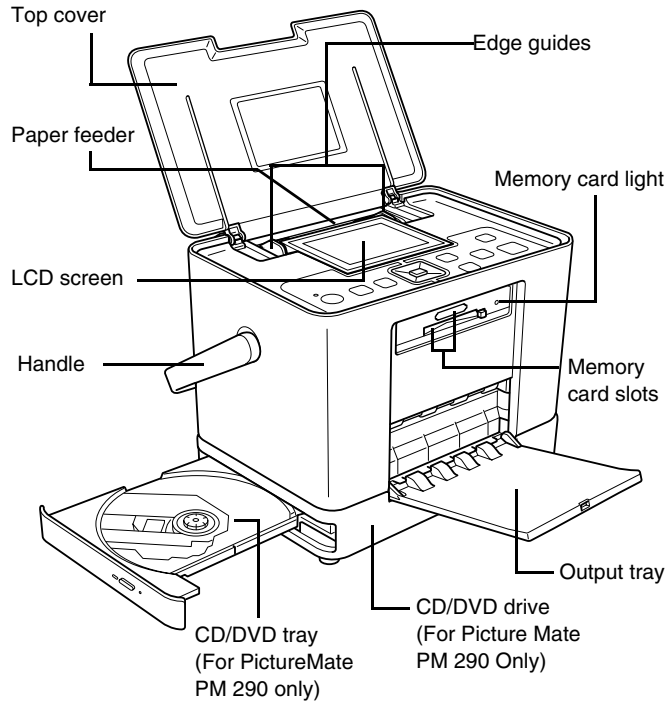
	Parts	Function
1	I/O On button	Press to turn the printer on and off.
2	☰ Menu button	Press to enter the Menu mode for the print settings or maintenance options.
3	↶ Back button	Press to cancel the current operation on the LCD screen and return to the previous menu.
4	OK button	Functions as shown in the LCD screen.
5	▲▼◀▶ 4-way scroll button	Press to move the cursor on the LCD screen.
6	⊞ Display button	Press to change the view of the screen.
7	🔍 Zoom button	Press to enlarge parts of your photo.
8	✕ Stop/Clear button	Press to cancel printing or to clear the number of copies and the editing settings.
9	🖨️ Print button	Press to start printing.
10	💿 Save to CD button	Shortcut button to save data to an external device or the internal CD drive (PM 290 only).

Understanding the LCD screen



1	The printing stage for this job.
2	Optional battery status.
3	Appears when ink is low.
4	The number of copies for the selected photo.
5	The total number of photos you selected to print.
6	The number for the current photo.
7	Total number of photos.
8	Guidance. The icons show the buttons to press.

Printer Parts



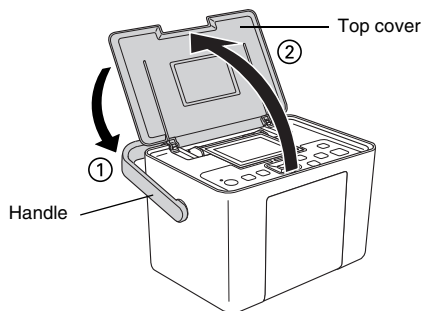
Preparing to Print

Note:

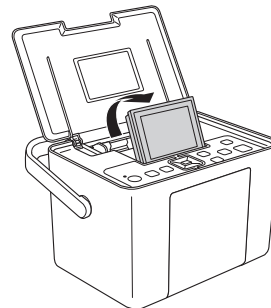
The illustrations in this section show the PictureMate PM 260. The instructions for the PM 290 are the same.

Inserting a Memory Card

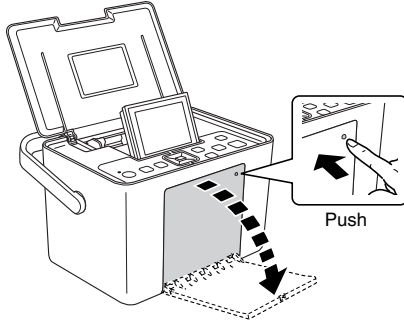
1. Move the handle to the back. Then open the top cover.



2. Raise and adjust the LCD screen so that you can see it well.



3. Open the output tray.

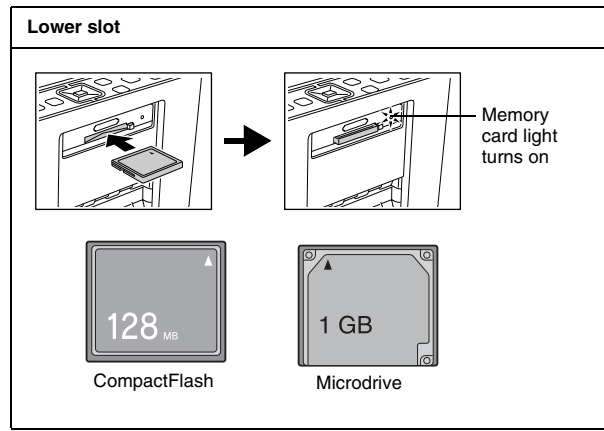
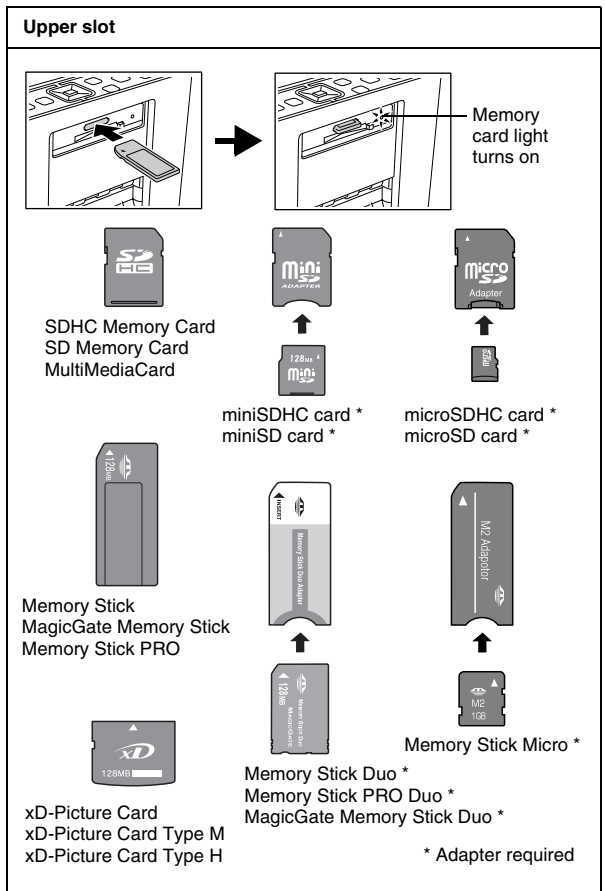


4. Press I/ψ On.
5. Make sure the memory card light is off and no cards are in both slots. Then insert a memory card into the correct slot, as shown in the illustration.



Caution:

- Insert just one card at a time.
- Load your memory card only as shown in the following table or you may damage your printer, memory card, or both. If you insert a card incorrectly, you see an error message on the LCD screen. Remove the memory card and insert it correctly.
- Do not press the button on the right side of the lower card slot when you insert a CompactFlash card or you cannot remove the card.
- If the CompactFlash card is not recognized, remove the card and insert it again.
- Make sure you fit mini memory cards with their adapters before inserting them into the printer's memory card slots. If you do not use an adapter, the memory card and the printer may be damaged.



6. The memory card light flashes and then stays on. It takes a few seconds to recognize the memory card. Now you can choose photos and layouts for printing from the LCD screen. See “Basic Photo Printing” on page 20.

For the latest information on memory cards available for your printer, contact your dealer or regional Epson sales office.

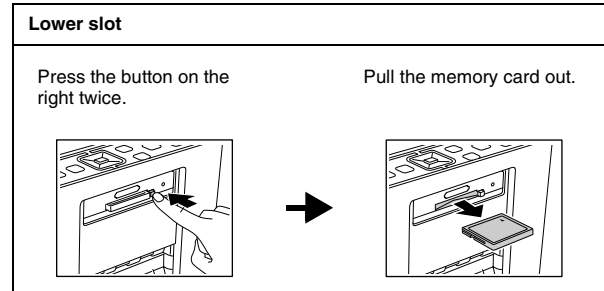
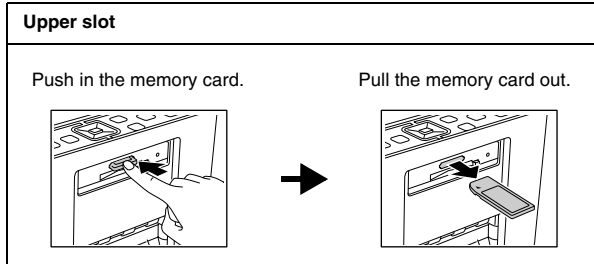
Removing the memory card

When you are ready to remove a memory card, make sure the memory card light is not flashing, then remove the memory card from the slot.



Caution:

Do not remove a card while the memory card light is flashing; you may lose photos on your card.



Loading Paper

When loading special paper distributed by Epson, read the instruction sheets packed with the paper first.

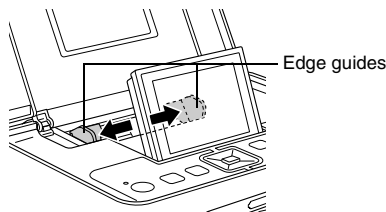
Follow these steps to load PictureMate Photo Paper:



Caution:

Do not load plain paper; this may damage PictureMate.

1. Make sure the edge guides are slid to the sides.

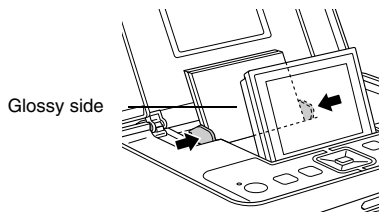


2. Place your paper in the center, with the glossy side up.

Note:

Make sure paper is glossy side up to prevent smearing.

3. Slide the edge guides against the paper. Make sure they are snug, but not so tight that paper cannot move.



Note:

- ❑ You can load paper up to 20 sheets.
- ❑ When you need more paper, order a PictureMate PicturePack. See "PicturePack , Paper, and Options" on page 60 for more information.

Paper Handling Instructions

When storing printouts

- ❑ Do not touch the printed side or stack your printouts until the ink is dry.
- ❑ To avoid scratching the image, be sure not to rub the printed side of the paper. If the printed side is rubbed too strongly, ink may come off the paper.
- ❑ Do not stack printouts with the image sides touching.
- ❑ Do not stack printouts and conventional film photographs with the image sides touching.
- ❑ If you stack printouts, place a sheet of plain paper or other absorbent paper between the individual prints.

When storing unused paper

Return any unused paper to the original package, and store it away from extreme temperatures, high humidity, and bright lights.

When displaying printouts

- ❑ When displaying your printouts indoors, Epson recommends placing your printouts in glass frames to preserve the colors in your image.
- ❑ Avoid displaying your printouts outdoors or in a place exposed to direct sunlight to prevent fading.

Note:

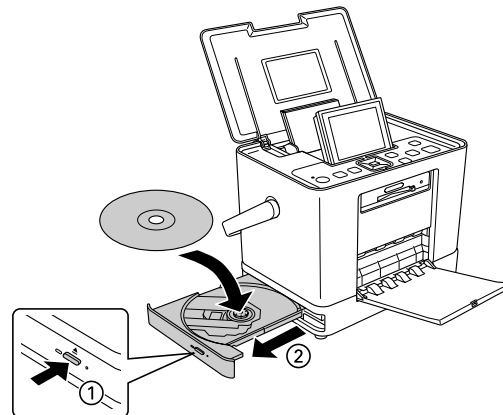
For best results, allow your prints to dry thoroughly for 24 hours before framing.

Inserting a CD/DVD into the CD/DVD Drive (PictureMate PM 290 Only)

You can view and print photos from a CD or DVD.

1. Make sure PictureMate is on.

2. Push the eject button to open the CD/DVD tray, and then gently pull out the CD/DVD tray. Place the CD or DVD in the CD/DVD tray, and then gently push the CD/DVD tray back in. A light on the front of the CD/DVD tray flashes to indicate that the CD or DVD is being read.




Ejecting the CD/DVD

1. Press the ▲ eject button at the side of the CD/DVD tray. The CD/DVD tray opens and you can remove the CD/DVD.

Choosing a Photo Source

If two or more sources such as a memory card and external device are available, you need to set the source of the photos by following this procedure before you start printing photos.




1. Press  Menu.
2. Select Select, then press OK.
3. Select Select Source then press OK.
4. Select Memory Card, CD (PM 290 only), or External Device, and then press OK.

Note for PictureMate PM 290 users

If you want to print from a DVD, select CD as the Select Source setting.

Basic Photo Printing


Changing the View of Photos on the LCD Screen

You can change the view of photos displayed by pressing the  Display button.

Printing Selected Photos

1. Press ◀ or ▶ to select the photo you want to print, and then press OK.
2. Press ▲ or ▼ to set the number of copies you want to, and then press OK.
3. Repeat steps 1 and 2 for additional photos.
4. If you want to make optional settings such as decorating your photo, see “Editing Your Photo” on page 23.

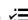
5. Press  to preview the photo you want to print.

If you want to change the paper size or layout, press  Menu, and then select Print Settings. Select the paper size and the layout you want to use from the Paper Size and the Layout settings.

For details, see “Making Paper and Print Layout Settings” on page 23.

6. Press .

Printing Groups of Photos

1. Press  Menu.
2. Select Select, and then press OK.
3. Select the menu you want to use to print, and then press OK.

Select All	Select all of the photos on your card, external device, or CD/DVD (PM 290 only).
Select By Date	Select photos by the date they were taken.
Select Source	Select the source of the photos when two or more sources are available. ➔ See "Choosing a Photo Source" on page 19.
Select Folder	Select a folder of photos from the internal CD/DVD device (PM 290 only) or an external device. Note: This function is only available when there are two or more folders.

4. Follow the on-screen instruction.

Note:

- ❑ *If you want to set the number of copies for specified photos only, select the photo you want to increase and press OK. Next, press ▲ and then press OK again.*
- ❑ *If there is DPOF information on the memory card, PictureMate enters DPOF print mode. See the next section. To print all of the photos on the memory card, press the ⏪ Back button, and then cancel DPOF information from your camera. Then follow the steps above.*

Printing Enlarged Photos

1. Press ◀ or ▶ to select the photo you want to print, and then press OK.
2. Press ▲ or ▼ to set the number of copies you want to, and then press OK.
3. Press Ⓞ Zoom until the photo is enlarged to the size you want, and then press ▲, ▼, ◀, or ▶ to adjust the view.

Note:

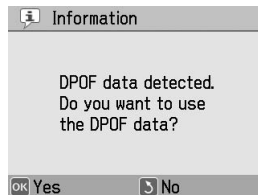
If you want to change the layout of your photo for, example to portrait or landscape, press ≡ Menu.


4. Press OK to confirm the image, and then press OK again.
5. Press ⏪ to preview the photo, and then press ⏪ again.

Printing Camera-Selected DPOF Photos

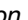
If your camera supports DPOF (Digital Print Order Format), you can use it to preselect which photos and how many copies you want to print. See your camera's manual to choose photos for printing with DPOF, then insert your memory card in PictureMate. PictureMate automatically reads your preselected photos.

1. Load paper and a memory card that contains DPOF data. The screen below appears on the LCD screen.



2. Press OK to confirm the paper size and layout, then press .










Note:




If you want to print all of the photos on the memory card, press the  Back button, and then cancel DPOF information from your camera. After that, follow the steps in "Printing Groups of Photos" on page 20.

Printing Options


Making Paper and Print Layout Settings

You can select the print layout from the following options.

10 × 15 cm 4 × 6"			
	Borderless		Half Page
	Border		Proofsheet
	2 Per Print		Backup Index Prints 56 photos as thumbnails
	4 Per Print		Digital Size
	ID Prints two 50.8 × 50.8 mm size photos and two 35 × 45 mm size photos		

16:9 wide size			
	Borderless		GreetingCard
	Border		

Editing Your Photo

1. Press  Menu.
2. Select Print Settings or Edit, and then press OK.
3. Select the item you want to edit, and then follow the on-screen instructions.

Print Settings

Paper Size *	You can choose 10 × 15 cm (4 × 6 in) or 16:9 wide	
Layout *	See "Making Paper and Print Layout Settings" on page 23	
Fix Photos * **	Enhance	Use this if a print does not look good; for example, this may correct images that are too dark, too bright, or backlit.
	P.I.M.	Process images according to the PRINT Image Matching information or Exif Print information in your digital files. This information helps to ensure an accurate image reproduction.
	Off	Prints photos as is or bypasses P.I.M. or Exif Print data (default setting for files with no P.I.M. or Exif Print data).
Enhance *	Adjust the mode according to the scene of your photo. Select Standard, People, Landscape, or Night scene. This function is only available when you select Enhance as the Fix Photos option.	
Date Stamp *	Print the date your photo was taken in the following format. (day, month, year: 26.Aug.2007) This function is only available when you select Border, Borderless, 2 Per Print, Half Page, Digital Size, or GreetingCard as the layout setting.	

Expansion *	Adjust the margins that are trimmed when you select Borderless. MAX: No margins are printed. MID: The expansion rate is low. (The margins might be printed.) MIN: The expansion rate is lower than MID. (The margins might be printed.)
Camera Text *	Select On to print text added from your digital camera. Note: <input type="checkbox"/> This function is only available for specific digital cameras that allow you to add text to photos. Check your camera's documentation. <input type="checkbox"/> Depending on the size of the characters, the maximum number of printable characters changes. For example, for large characters such as a string of upper case "W", the number of printable characters is 32 for 10 × 15 size and 39 for 16:9 size. <input type="checkbox"/> This function is only available when you select Borderless as the layout setting.
Reset	Reset Print Settings to their default settings before you began printing.

Note;

- All of the above function, these settings affect only your printed photos.
- * None of these settings are cleared when you press the Stop/Clear button during printing.

- ❑ **** If your camera supports PRINT Image Matching or Exif Print, you can use the printer's P.I.M. settings to automatically adjust your photos for the best result.**
If your camera does not support them, you can use Enhance to make adjustments for the type of environment in which your photos were taken.

Edit

Decorate	You can add, edit, or remove decorations such as pop-up on/from your photos.
Rotate	Rotate your photos by 90 degrees.
Color Effect	None / B & W / Sepia
Red-Eye	On to correct red-eyes in your photo (default: Off) Note: Depending on the type of photo, parts of the image other than the eyes may be corrected.
Brightness	-2 to 2 (default: 0)
Saturation	-2 to 2 (default: 0)
Sharpness	-2 to 2 (default: 0)

Note:

None of the above functions are cleared when you press the Stop/Clear button during printing.

Printing From an External Device

PictureMate can print photos stored on a computer or on another device such as an external hard drive or a digital camera.

Note:

Illustrations in this section show the PictureMate PM 260. The instructions for the PM 290 are the same.

Printing From an External Drive



If you saved your photos to a CD/DVD, Zip disk, or flash memory (thumb) drive, you can connect the drive to the back of PictureMate and print just like you do when you insert a memory card.

You can also print photos from a CD that you get from a photo processing lab. (Images should be in JPEG file format. Some CDs may not work.)

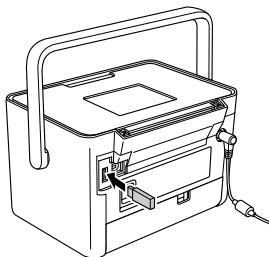
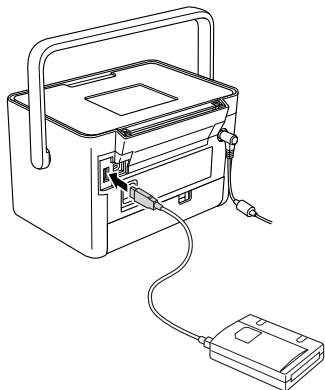
1. Make sure PictureMate is on.
2. Make sure there are no memory cards in PictureMate's memory card slots. The card light should be off.

Note:

If a memory card or CD/DVD (PM 290 only) is inserted, the printer reads photos from the card or CD/DVD, not from the external drive.

3. If PictureMate is connected to a computer, disconnect it or turn off the computer.

4. Connect your CD/DVD or Zip drive's USB cable, or plug your flash memory drive into the EXT. I/F port on the back of PictureMate.



5. For a CD/DVD or Zip drive, insert a CD, DVD, or Zip disk with photos into the drive.

If you used PictureMate to save photos on the same CD-R, DVD-R, Zip disk, or flash memory drive more than once, it will have multiple folders. You see this message:



Select the folder where your photos are stored, and then press OK. The highest number is the most recently saved folder.

6. If you see this screen, you are ready to choose and print photos. See “Basic Photo Printing” on page 20 and print your photos.




Printing From a PictBridge-Enabled Camera

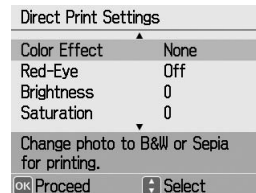
You can connect your PictBridge- or USB DP-enabled digital camera to the back of PictureMate and use the camera to control printing. (See your digital camera's documentation to see if it supports the PictBridge standard or USB DP.)

1. Make sure PictureMate is on.
2. Make sure there are no memory cards in PictureMate's slots. The memory card light should be off.

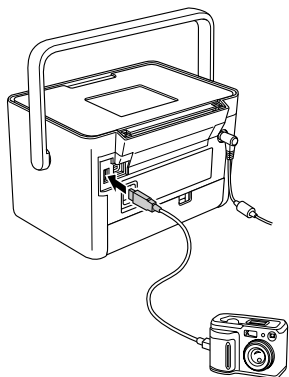
Note:

If a memory card is inserted, the printer will read photos from the card, not from a camera.

3. Press  Menu.
4. Select Setup, and then press OK.
5. Select Direct Print Settings, and then press OK.
6. Select the setting you want to make, and then follow the on-screen instructions to make the settings.



7. Connect your camera's USB cable to your camera and the EXT. I/F port on the back of PictureMate.



8. Use the digital camera to select the photo you want to print. Be sure to make the desired print settings on the digital camera because the digital camera settings generally take precedence over the print settings of PictureMate. See your digital camera's documentation for information on more detailed settings.
9. Print from the digital camera.

Printing with **BLUETOOTH**

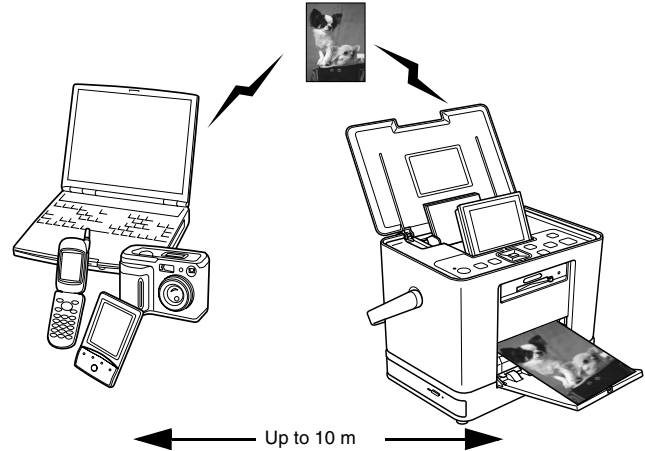
About the **BLUETOOTH**

BLUETOOTH wireless technology allows you to print from digital cameras and other BLUETOOTH enabled devices without having to connect any cables to the printer.

The BLUETOOTH printing is a standard function for PictureMate PM 290.

Qualified Design ID : B011187

BLUETOOTH printing is an optional function for PictureMate PM 260. For more details on using the BLUETOOTH Photo Print Adapter, see “Using the Optional BLUETOOTH Photo Print Adapter (PictureMate PM 260 Only)” on page 33.



Note:

- ❑ While this printer complies with the **BLUETOOTH** Specification, it is not guaranteed to work with all devices enabled with **BLUETOOTH** wireless technology.

- ❑ *The communication range of this product is approximately 10 meters; however, this may vary depending on conditions including obstacles between devices; signal quality; magnetic fields; static electricity and electromagnetic interference; software; operating system; reception sensitivity; antenna performance; and when sharing the same wireless frequencies with equipment such as microwave ovens or cordless telephones.*

- ❑ *Epson cannot accept responsibility for any failure to satisfy the protection requirements resulting from a non-recommended modification or use of the printer.*

Available Profile

Basic Printing Profile (BPP)
Basic Imaging Profile (BIP) Printable file size is up to 2.5 MB. Up to 10 jobs can be queued (Maximum 3 MB).
Hardcopy Cable Replacement Profile (HCRP)
Object Push Profile (OPP)

BLUETOOTH settings

Use the LCD screen on PictureMate to make settings for BLUETOOTH wireless communication.

➔ See “Making settings” on page 32


Outline of settings

Setting	Choices	Description
BT Device Name	printer name-(number) (Default = 1)	If multiple printers enabled with BLUETOOTH are in the same communication range, distinguish them by assigning each number from 0 through 9. To make the Device Name setting take effect, turn the printer off and then back on.

BT Comm Mode	Discoverable	This mode allows devices enabled with BLUETOOTH to freely discover the printer and print.
	Not Discoverable	This mode prevents unknown devices from discovering the printer. To print in this mode, first search for the printer once in Discoverable mode. After your device has discovered the printer in Discoverable mode once, it will subsequently be able to communicate with and print from it in this mode.
	Pairing	This mode requires that the four-digit Passkey be entered into a device before it can communicate with and print from the printer.
Encryption	On/Off (Default = Off)	Select On to encrypt communication. Encryption requires that the four-digit Passkey be entered into a device before it can communicate with and print from the printer.

Passkey	Any four-digit number (Default = 0000)	The Passkey setting allows you to set the four-digit Passkey that must be entered into a device before printing if Pairing is selected as the BT Comm Mode or if Encryption is On.
BT Device Address	Set at the factory (Example) 11-11-11-11-11-11	Displays the unique BLUETOOTH Device Address of the printer.

Making settings

1. Press  Menu.
2. Select Setup, then press OK.
3. Select Bluetooth, then press OK.
4. Select Bluetooth Setup, then press OK.
Set the BT Device Name, BT Comm Mode and Encryption. See “Outline of settings” on page 31 for information about BLUETOOTH settings except Passkey setting. See the “The BLUETOOTH Passkey Setting” on page 33 to set the Passkey.

The BLUETOOTH Passkey Setting

After you set the BT Device Name, BT Comm Mode, and Encryption, you can set a passkey.

1. Select a number for the digit, and then press ► button.

Note:

Press the ◀ button to return to the digit on the left.

2. Select numbers for the other digits in the same way, and then press OK.
3. At the confirmation screen, press OK to activate the Passkey.

Printing

1. Make sure BLUETOOTH settings have been made. For details on making the BLUETOOTH settings, see “BLUETOOTH settings” on page 31.
2. Use the PictureMate's control panel to adjust the print settings. Press ≡ Menu, then select Print Settings, and press OK. Next, select the paper size and the layout you want to use from the Paper Size and the Layout settings.

Note:

- ❑ *If you want to edit your photo, select Direct Print Settings from the Setup menu.*
 - ❑ *The settings available may vary among BLUETOOTH wireless-capable devices. For more information, refer to your device's documentation.*
3. Print the data from your BLUETOOTH enabled device.

For more information about printing from BLUETOOTH wireless-capable mobile phones, digital still cameras, digital video cameras, PDAs, mobile PCs and other BLUETOOTH wireless-capable device, refer to the documentation for both the device and the printer.

Using the Optional BLUETOOTH Photo Print Adapter (PictureMate PM 260 Only)

BLUETOOTH Photo Print Adapter

BLUETOOTH Photo Print Adapter 2 C12C82438*

Note:

The asterisk is a substitute for the last digit of the product number which varies by location.

Connecting and disconnecting the BLUETOOTH Photo Print Adapter

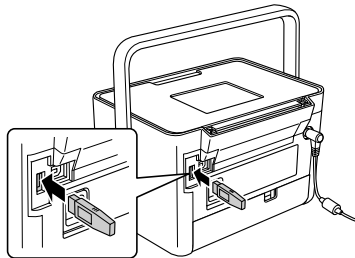
Connecting

1. Insert the Adapter connector into the EXT. I/F port as shown below.



Caution:

Do not connect this product while the printer is operating. Doing so may cause the printer to malfunction.



2. The Adapter's light comes on for one second. If the LED does not turn on, disconnect the Adapter from PictureMate, then reconnect it.

Next, make the settings for BLUETOOTH wireless communication. See "BLUETOOTH settings" on page 31.

Disconnecting

Remove the Adapter's connector from the EXT. I/F port.



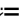
Caution:

- Do not remove this product while communicating with another device.
- Do not disconnect this product while the printer is operating. Doing so may cause the printer to malfunction.
- Do not remove this product by pulling on its upper section. Doing so may damage the product.

PictureMate Preferences

Settings

You can set the convenient functions and customize usual your printing. Refer to the following steps and table.

1. Press  Menu.
2. Select Setup, then press OK.
3. Follow the on-screen instructions.

Slide Show	View all photos in sequence like a slide shows.
Confirm Print Preview	Turn this On to display the print preview screen so that you can confirm your image before printing.
Confirm Print Settings	Turn this On to display the confirmation message which asks whether or not you want to continue making settings.
Language	Select the language to display.
Direct Print Settings	If you print from a PictBridge or USB DP-enabled digital camera, make the basic settings with this function before printing. (➔ page 28)

CD Backup Speed (PM 290 only)	Select the speed to use when saving to the internal CD drive. You can select from High Speed or Normal. When High Speed is selected, the printer does not perform a verification check.
Bluetooth	Make the BLUETOOTH settings. (➔ page 31)
Reset Default Settings	Reset to the default settings.

Saving Your Photos (Backup)

Saving Photos to the External Device

Note:

Illustrations in this section show the PictureMate PM 260. The instructions for the PM 290 are the same.

You can choose your photo files on your memory card and save them to one of the following devices by connecting the device directly to PictureMate. Except for the Flash memory drive, you can save photos to several disks when the photo data size is larger than the disk size.

- CD/DVD drive (CD-R/DVD-R media only)
- MO drive
- Iomega[®] Zip[®] disk (100, 250, or 750 MB)
- Flash memory (thumb) drive

Note:

Epson cannot guarantee the compatibility of any drives.

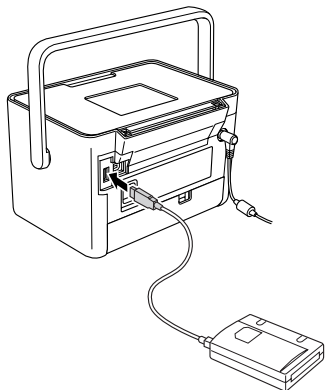
1. Make sure PictureMate is on.
2. Insert your memory card into PictureMate.

Note for PM 290 user's

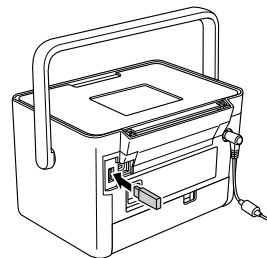
If you have inserted a CD or DVD in the internal CD/DVD drive, remove it before continuing.

3. If you are using a CD/DVD drive or Zip drive, plug it into an electrical outlet if required.
4. Connect the drive to PictureMate.

- ❑ For a CD/DVD, MO or Zip drive, connect its USB cable to the EXT. I/F port on the back of PictureMate. Then insert a CD-R/DVD-R, MO or Zip disk in the drive.



- ❑ For a flash memory drive, plug it into the EXT. I/F port on the back of PictureMate.



Note:

If you want to save specified photos only, select the photos first.

5. Press \equiv Menu.
6. Select Save Photo(s), then press OK.
7. Select All Photos or Selected Photos, then press OK.

Note:

If you have not selected any photos, Selected Photos is grayed out.

8. When the confirmation message appears, press OK.
9. If you want to print an index of the saved photos, select Print Backup Index and then press OK. The printer starts printing photos to be saved in Backup Index layout after saving the photos to a disk. This layout prints a maximum of 56 thumbnails. Load 10 × 15 cm photo paper in the paper feeder.

If you do not want to print an index of the saved photos, select Do Not Print and then press OK.

10. Follow the instructions on the LCD screen to save photos.

Note:

You cannot cancel saving data once it has started.

11. When saving photos has finished, press OK.



Caution

Do not remove the drive or memory card while the photos are being saved, or you may lose photos on your card or drive. You can save photos multiple times to the same disk or drive until it is full. Each time you save photos on the same disk or drive, they are saved in a new folder. The first folder is named 001, the second folder is named 002, and so on.

Saving Photos to the CD (PictureMate PM 290 Only)

You can save photo data on a memory card to the CD in PictureMate's internal CD/DVD drive. Afterwards, you can print the photos that you saved to a CD. If the photo data is larger than the CD capacity, you can save the data separately on several CDs.

Precautions

- ❑ While saving your data to a CD, be aware of the following points to keep your photo data safe. If the save fails, data that is being saved or saved data may not be read. Even if you avoid the following, a writing error may occur. Use an authentic brand and refer to its documentation to store the CD safely.
- ❑ Avoid turning off PictureMate. The CD itself may be damaged and may not be reused later.
- ❑ To protect your data from vibrations, shocks, and static electricity, do not touch PictureMate while saving.
- ❑ Do not eject the CD or operate the printer.
- ❑ Before writing data to the CD using battery power, make sure the battery is charged in advance, or there is enough power charge.
- ❑ Do not replace the battery, connect or disconnect the AC cable, or change the power source between AC power and battery.
- ❑ Avoid replacing the photo cartridge or loading paper.

- ❑ Do not move or carry your PictureMate.
- ❑ The CD/DVD tray is ejected automatically when the back up is finished. Leave more than 15 cm space around the CD/DVD tray.
- ❑ Do not vibrate or shock the printer.
- ❑ Do not connect or disconnect a USB cable.
- ❑ Do not open or close the top cover.



Inserting a CD into the CD/DVD drive

1. Before you start, check that your CD meets the following specifications.

• CD-R	• CD-RW Multi
• CD-RW High	• CD-RW Ultra

2. Insert a CD into the CD/DVD drive. See “Inserting a CD/DVD into the CD/DVD Drive (PictureMate PM 290 Only)” on page 18.

Saving photos to the CD

1. Insert your memory card into PictureMate.
2. If you do not want to save all of the photos, select the photos to save.
3. Press  Save to CD. (Or, press  Menu, select Save Photo(s), and then press OK.)
4. Select All Photos or Selected Photos, then press OK.

Note:

If you have not selected any photos, Selected Photos is grayed out.

5. On the confirmation screen, confirm the number of photos you want to save, and then press OK.
6. If you want to print an index of the saved photos, select Print Backup Index and then press OK. The printer starts printing photos to be saved in Backup Index layout after saving the photos to a disk. This layout prints a maximum of 56 thumbnails. Load 10 × 15 cm photo paper in the paper feeder.

If you do not want to print an index of the saved photos, select Do Not Print and then press OK.

7. Follow the instructions on the LCD screen to save photos.
8. After PictureMate has saved the photo data to a CD, it ejects the CD. When you save to several CDs, insert another CD and continue backing up.

Replacing the PicturePack (Photo Cartridge)

Checking the PicturePack Status

When the PicturePack is low on ink, you see this icon in the upper-right corner of the LCD screen.



You can check the PicturePack status at any time.

1. Press \equiv Menu.
2. Select Maintenance, and then press OK.
3. Select Check PicturePack Status, and then press OK.
4. A screen is displayed showing the PicturePack status. Press OK to close the screen.

Replacing the PicturePack

When PicturePack needs replacement, you see a message on the LCD screen.

Note:

Illustrations in this section show the PictureMate PM 260. The instructions for the PM 290 are the same.



Warning:

Keep photo cartridges out of the reach of children. Do not allow children to drink from or handle the cartridges.

**Caution:**

- ❑ *Epson recommends the use of genuine Epson photo cartridges. Epson warranties do not cover damage to your printer caused by the use of photo cartridges not manufactured by Epson.*

- ❑ *Leave the old cartridge installed in the printer until you have obtained a replacement; otherwise, ink remaining in the print head nozzles may dry out.*

- ❑ *Do not refill photo cartridges. Other products not manufactured by Epson may cause damage that is not covered by Epson's warranties, and under certain circumstances, may cause erratic printer behavior.*

Note:

- ❑ *PictureMate uses PicturePack equipped with an IC chip. The IC chip monitors the PicturePack status.*

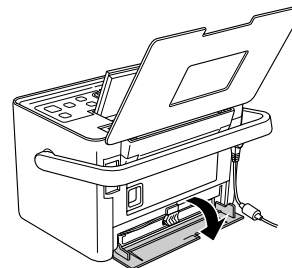
- ❑ *Epson cannot guarantee the quality or reliability of non-genuine photo cartridge.*

- ❑ *In addition to the ink used while printing an image, ink is also used during the print head cleaning operation.*

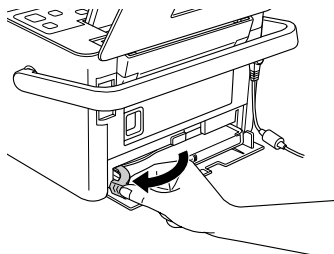
For more information about photo cartridges.

➔ See "When handling photo cartridges" on page 9

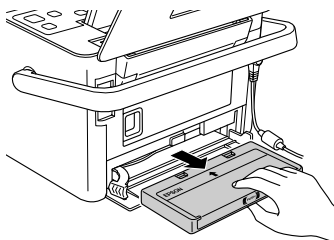
1. Make sure that PictureMate is on, but not printing.
2. Open the cartridge compartment cover on the back of PictureMate.



3. Set the cartridge lever in the Release position by pulling it to the left. The photo cartridge will be ejected about halfway out of the cartridge holder.



4. Pull the cartridge out of PictureMate and dispose of it properly.

**Note:**

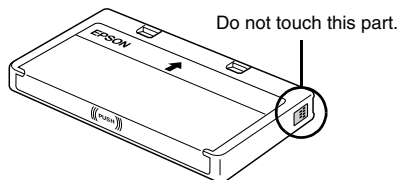
Do not take the used cartridge apart or try to refill it. Do not shake the used photo cartridge; otherwise, it may leak.

5. Remove the replacement photo cartridge from its package.



Caution:

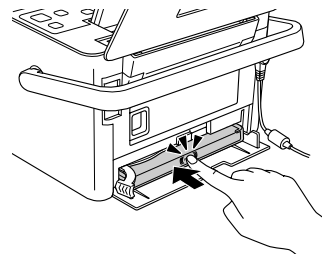
- ❑ Do not touch the green IC chip on the side of the cartridge. This can damage the photo cartridge.



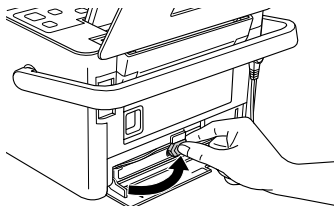
- ❑ If you remove the photo cartridge for later use, be sure to protect the ink supply ports from dirt and dust; store it in the same environment as the printer. Note that there is a valve in the ink supply ports, making covers or plugs unnecessary, but care is needed to prevent the ink from staining items that the cartridge touches. Do not touch the ink supply ports or surrounding area.

- ❑ Be sure to always install a photo cartridge into the printer immediately following the removal of the current photo cartridge. If a photo cartridge is not installed promptly, the print head may dry out, rendering it unable to print.

6. Place the cartridge properly into the cartridge holder, then push it in until you feel resistance and hear the cartridge faintly click into place.



7. Set the lever to the Lock position by sliding it to the right.



Note:

Once the photo cartridge is installed, DO NOT release or adjust the photo cartridge lever. If you move the lever accidentally, remove the cartridge and reinstall it.

8. Close the cartridge compartment cover.

Note:

If you cannot close the cartridge compartment cover, the photo cartridge is not installed correctly. Go back to the step 3 and eject the photo cartridge. Then install the photo cartridge again.

Transporting PictureMate

Packing

PictureMate's handle makes it easy to carry short distances. If your PictureMate is going to travel a longer distance, you should pack it carefully following the steps below to protect it from getting damaged.



Caution:

Keep PictureMate out of the sun and don't leave it in your car or other location where it can get too hot.



1. If PictureMate is on, turn it off.
2. Wait until the LCD screen goes blank, then unplug the power cord from the electrical outlet.

3. Remove paper from the paper feeder and output tray. Remove the CD or DVD if it is in the CD/DVD drive (PictureMate PM 290 only).
4. Close the LCD screen.
5. Close the top cover and output tray.
6. Disconnect the power cord and any connected USB cable from the back of PictureMate.
7. Pack the power cord, AC adapter, paper, spare photo cartridge, and this manual in the travel case.
8. Pack PictureMate and the travel case in the box that PictureMate came in.



Caution:

Make sure the photo cartridge is installed before transporting. Do not place PictureMate on its side or upside down, or ink may leak.

Note:

If your prints do not look as good after PictureMate has been moved, try aligning the print head. See “Aligning the Print Head” on page 51.

Using the Optional Battery

Lithium Ion Battery

An optional rechargeable battery means you can use PictureMate without the AC adapter.

Note:

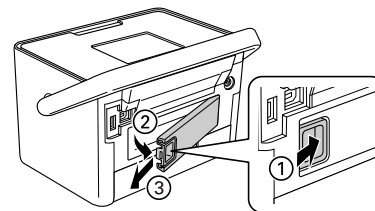
- ❑ *Install the battery after installing the first photo cartridge and after ink charging is finished.*
- ❑ *You cannot save data on the memory card to an external device when using the battery. Connect the AC adapter to PictureMate when you save data.*
- ❑ *When you copy data on a computer to your memory card, confirm that there is enough power in the battery. If the battery runs out, saving is canceled, and corrupted data may remain on the memory card.*

For safety instructions for the battery, see “When using the optional battery” on page 8.

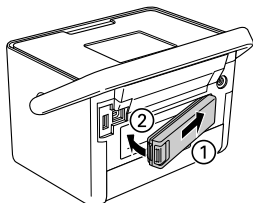
Installing the battery

Follow the steps below to install the battery.

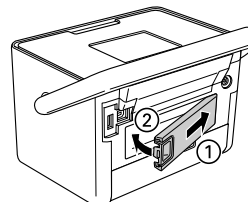
1. Make sure that PictureMate is turned off.
2. Unplug the AC adapter from the printer.
3. Press the release latch and remove the battery cover as shown below.



4. Insert the battery into the compartment in the direction shown below until it is fixed in place.

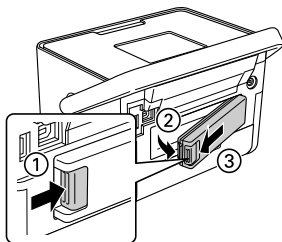


3. Attach the battery cover as shown below.



Removing the battery

1. Make sure that PictureMate is turned off.
2. Press the release latch and pull out the battery.





Charging the battery

After installing the battery, charge the battery using the AC adapter.

1. Make sure that the battery is installed.
2. Connect the power cord and AC adapter, then plug in PictureMate.

When PictureMate is off, the power light blinks during charging. When the battery is fully charged, the power light turns off.






When PictureMate is on during charging,  icon blinks on the LCD screen. When the battery is fully charged,  icon appears.

Note:

The battery may not be charged correctly if the temperature of the operation is not guaranteed.

Checking the battery status

The battery status is always displayed at the top right corner of the LCD screen.

Icon	Status
	Sufficient battery power.
	When the icon is green, battery power is low. When the icon is red, battery power is almost empty.
	Battery power is running out.
	Battery is charging.
	Battery is fully charged.

Battery performance

	PictureMate PM 260	PictureMate PM 290
Charging Time	Approx. 120 minutes (Approx. 150 minutes at maximum)	
Continuous Print Time	Approx. 100 minutes *	Approx. 60 minutes **
Number of Prints	Approx. 100 sheets (10 × 15 cm) *	Approx. 60 sheet (10 × 15 cm) **

* When printing from a memory card with a fully charged, fresh battery, at room temperature. The number of sheets varies depending on the memory card, data size, and other conditions.

** When printing from CD drive with a fully charged, fresh battery, at room temperature. The number of sheets varies depending on the data size, and other conditions.

Auto Power Off

When the battery is used to power PictureMate, PictureMate will automatically turn off to save battery power if it is idle for about 15 minutes.

Note:

When a memory card is inserted and PictureMate is connected to a computer, it will not turn off automatically.

Maintaining PictureMate

Checking and Cleaning the Print Head Nozzles



If your print quality is not as good as it used to be, if your photos are light or faint, or you are missing colors in your prints, your print head nozzles may be clogged.

Note:

- ❑ *Print head cleaning consumes some ink. To avoid wasting ink, clean the print head only if print quality declines; for example, if the printout is blurry or the color is incorrect or missing.*

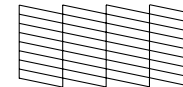
 - ❑ *Use the Nozzle Check function first to confirm that the print head needs to be cleaned. This saves ink.*

 - ❑ *If a message on the LCD screen tells you that the cartridge needs replacement or is low on ink, you cannot clean the print head. You must first replace the photo cartridge.*
1. Make sure that PictureMate is turned on and no warnings or errors are displayed on the LCD screen.

2. Load a sheet of paper. See “Loading Paper” on page 16.
3. Press  Menu.
4. Select Maintenance, and then press OK.
5. Select Nozzle Check, and then press OK.
6. Press  to print the nozzle check pattern.
7. Examine the nozzle check pattern you printed.

Below are sample printouts.

Okay



Needs Cleaning



The above sample may be shown in black and white, but the actual test prints in color (Black, Cyan, Magenta and Yellow).

8. If the nozzle check pattern is satisfactory (Okay), Press **OK**.

If the nozzle check page does not print satisfactorily (for example, if any segment of the printed lines is missing), your print head nozzle may be clogged. Go on to the next step.

9. Press **↵** Back. If a confirmation message is displayed, press **OK** to clean print head.
10. When cleaning finishes, press **🖨** to print another nozzle check pattern and check the pattern again.

Note:

If you do not see any improvement after cleaning about two times, check the solutions beginning on page 56. You can also turn the printer off and wait for at least 6 hours - this allows any dried ink to soften-and then try cleaning the print head again.

1. Make sure that PictureMate is turned on and no warnings or errors are displayed on the LCD screen.
2. Load a sheet of photo paper. See “Loading Paper” on page 16.
3. Press **☰** Menu.
4. Select Maintenance, and then press **OK**.
5. Select Head Alignment, and then press **OK**.
6. Press **🖨** to print the Head Alignment Pattern, and then follow the on-screen instructions.


Aligning the Print Head

If you have moved PictureMate and the print quality is not as good as it was before—for example, you see misaligned vertical lines or light or dark horizontal banding—you may need to align the print head.

Cleaning PictureMate

Cleaning the roller inside

To keep your printouts at their best, and when printing on Epson Ultra Glossy Photo Paper via computer, use the following procedure to clean the roller inside PictureMate.

1. Load several sheets of paper.
2. Press  Menu.
3. Select Maintenance, and then press OK.
4. Select Cleaning Sheet, and then press OK.
5. Follow the instructions on the LCD screen to repeat loading and ejecting the paper until the roller is clean.
Then press Stop/Clear to exit.

Cleaning the outer case

To keep PictureMate operating at its best, clean it thoroughly several times a year as follows.

1. Turn off PictureMate and unplug the power cord.
2. Remove any paper from the paper feeder.
3. Use a soft brush to carefully clean away all dust and dirt from the paper feeder.
4. If the outer case or the inside of the paper feeder is dirty, wipe it with a soft, clean cloth dampened with mild detergent. Keep the output tray closed to prevent water from getting inside.



Caution:

- Never use alcohol or thinner to clean the printer, as these chemicals can damage the components as well as the case.*
- Be careful not to get water on the printer mechanism or electronic components.*
- Do not use a hard or abrasive brush.*
- Do not spray the inside of the printer with lubricants. Unsuitable oils can damage the mechanism. Contact your dealer or a qualified service person if lubrication is needed.*

Troubleshooting

The solutions herein are for problems when printing without using a computer.

If you cannot solve the problem, you can get more information from the LCD screen. Press the Menu button, then select Help.

Error/Warning Messages

You can diagnose and solve most problems by checking the error messages on the LCD screen. If you cannot solve the problems, by checking the messages, use the following table and try the recommended solution.

Error Messages	Solution
A printer error has occurred. See your printer documentation.	Turn PictureMate off and then back on. If the error message still appears, contact your dealer. ➔ See "Contacting Customer Support" on page 59

Error Messages	Solution
PicturePack low. Replace PicturePack soon.	Press OK to clear the error. Prepare the new PicturePack. If you tried to clean the print head, replace the PicturePack first. ➔ See "Replacing the PicturePack" on page 41
Replace the PicturePack.	Replace the PicturePack with the new one. ➔ See "Replacing the PicturePack" on page 41
Service required. Parts inside your printer are near the end of their service life. See your printer documentation.	Contact Epson for assistance. ➔ See "Contacting Customer Support" on page 59
Service required. Parts in your printer are at the end of their service life. See your printer documentation.	
Error in data. Printouts may be affected.	The print results may not be perfect. Check the data.

Error Messages	Solution
The image is too large. See your printer documentation.	Press OK to clear the error. Check the data.
The image is too complex. See your printer documentation.	
Error in data. Cannot print.	
Cannot recognize the device. See your printer documentation.	Disconnect the device and check that it meets the PictureMate specifications.
Cannot recognize the memory card. See your printer documentation.	Make sure the memory card has been inserted correctly. If so, check to see if there is a problem with the card and try again.
Cannot recognize CD contents. See your printer documentation. (PM 290 only)	Remove the CD from the CD/DVD drive and check your CD is compatible with this printer. ➔ See "CD/DVD drive (PM 290 Only)" on page 64.
Save failed	Make sure the memory card has been inserted correctly. Make sure the external device has been connected if you are saving to an external device. Check the file name. The maximum number of characters for a file name is 60. You cannot save the data if the character number exceeds this limit.
The battery is empty.	Connect the AC adapter.

Error Messages	Solution
Battery overheating.	Turn the PictureMate off, and wait until the battery temperature decreases.
There is a problem with the battery voltage.	Turn the PictureMate off. Replace the battery with a new one.

Printer Power Problems

LCD screen is dark or off

- ❑ If no buttons are pressed for three minutes, the LCD screen goes dark to save energy. After another 10 minutes, the LCD screen turns off automatically. Press any button (except **1/⏻ On**) to return the screen to its previous state.
- ❑ Press **1/⏻ On** to make sure that PictureMate is on.
- ❑ Turn off PictureMate and make sure that the power cord is securely plugged in.
- ❑ Make sure that your outlet works and is not controlled by a wall switch or timer.

LCD screen came on and then went out

The PictureMate's voltage may not match the outlet rating. Turn off PictureMate and unplug it immediately. Then, check the printer labels.



Caution:

If the voltage does not match, DO NOT PLUG YOUR PRINTER BACK IN. Contact your dealer.

Print and Noise Problems

PictureMate makes an unexpected noise after you install a photo cartridge.

The first time you install the photo cartridge, PictureMate will charge its print head for about three and a half minutes. Wait until charging finishes before you turn it off, or it may charge improperly and use more ink the next time you turn it on.

PictureMate sounds as though it is printing, but nothing prints.

- PictureMate may be preparing to print.

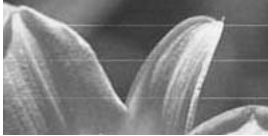
- Make sure the print head nozzles are not clogged. To clean the print head, see “Checking and Cleaning the Print Head Nozzles” on page 50.
- PictureMate will not work properly if it is tilted or at an angle. Place it on a flat, stable surface that extends beyond the printer base in all directions.
- Make sure paper is not jammed and is loaded correctly so it can feed into PictureMate. Make sure the handle is not resting on the paper. See “Preparing to Print” on page 13.

The memory card does not work correctly.

- Make sure you are using a compatible memory card. See “Memory card” on page 64.
- Make sure only one card is inserted at a time. PictureMate does not read from multiple cards at once.
- Photos must be in JPEG or Uncompressed TIFF format and taken with a DCF-compliant camera.
- PictureMate can recognize and print the first 999 photos on your memory card.

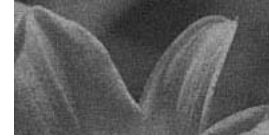
Photo Quality Problems

You see banding (light lines) in your prints.



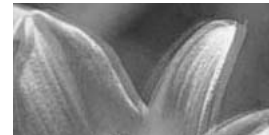
- ❑ The print head nozzles may need cleaning; see “Checking and Cleaning the Print Head Nozzles” on page 50.
- ❑ Make sure the glossy side of the paper is face up.
- ❑ The photo cartridge may need replacing. To replace the cartridge, see “Replacing the PicturePack” on page 41.
- ❑ The print head may need aligning; see “Aligning the Print Head” on page 51.

Your printout is blurry or smeared.



- ❑ Use only paper recommended by Epson to ensure proper saturation, ink absorption, and quality. See “PicturePack and Paper” on page 60.
- ❑ Make sure you load paper with the glossy side face up.
- ❑ Make sure your paper is not damp or curled, or loaded face down (the glossy side should be face up). If it is damp or curled, load a new stack of paper.

Your printout is faint or has gaps in the image.



- ❑ The print head may need aligning; see “Aligning the Print Head” on page 51.

- ❑ The print head nozzles may need cleaning; see “Checking and Cleaning the Print Head Nozzles” on page 50 for instructions.
- ❑ The photo cartridge may be old or low on ink. To replace the photo cartridge, see “Replacing the PicturePack” on page 41.
- ❑ Make sure your paper is not damaged, old, dirty, or loaded face down. If it is, reload a new stack of paper with the glossy side up.

Colors in your photo are wrong or missing.

- ❑ Make sure the Color Effect setting is set to None for color photos.
- ❑ The print head nozzles may need cleaning; see “Checking and Cleaning the Print Head Nozzles” on page 50.
- ❑ The photo cartridge may be old or low on ink. To replace the cartridge, see “Replacing the PicturePack” on page 41.

Problems With Paper Feeding

Paper does not eject fully or is wrinkled.

If it is wrinkled when it ejects, the paper may be damp or too thin.

Paper does not feed correctly or jams in the printer.

- ❑ Make sure the top cover is open, and is not leaning on the handle. The handle should be back of PictureMate. Make sure the handle is not resting on the paper. See “Preparing to Print” on page 13.
- ❑ If paper does not feed, remove it from paper feeder, reload it in the center, then slide both edge guides against the paper (but not too tightly).
- ❑ If multiple pages feed at once, remove the paper from the paper feeder, separate the sheets, and carefully reload it.
- ❑ If paper jams, remove the paper, then press OK to clear the jam.

- ❑ Load paper glossy side up. Load up to a maximum of 20 sheets for photo papers. Place the paper in the center and slide both edge guides against it, but not so tight that paper cannot move.
- ❑ Do not load plain paper; this may damage PictureMate.
- ❑ Make sure you are using available paper for PictureMate (see “PicturePack and Paper” on page 60). Store paper flat to help prevent curling.
- ❑ If you have a border on one side of your photo but not the other, make sure the paper is placed in the center of the paper feeder. Slide the edge guides against the paper.
- ❑ If the subject of your photo is very close to the edge of the image, you can change the amount of cropping around the edge of the image for Borderless printing by using Expansion from the Print Settings menu. If you see a white line around the edge of the print, select MID or MAX.

Miscellaneous Printout Problems

The printer prints blank pages.

The print head may need cleaning. See “Checking and Cleaning the Print Head Nozzles” on page 50.

The borders or layout are incorrect.

- ❑ Check your Layout setting to see if it is correct. See “Making Paper and Print Layout Settings” on page 23.
- ❑ If your camera supports DPOF, you can preselect photos so PictureMate will print only the ones you want. See “Printing Camera-Selected DPOF Photos” on page 22.
- ❑ If your camera is PictBridge- or USB DP-enabled, you can connect it to PictureMate and control printing from your camera. See “Printing From a PictBridge-Enabled Camera” on page 28.

The wrong photo is printed.

Contacting Customer Support

Regional Customer Services

If your Epson product is not operating properly and you cannot solve the problem using the troubleshooting information in your product documentation, contact customer support services for assistance. If customer support for your area is not listed below, contact the dealer where you purchased your product.

Customer support will be able to help you much more quickly if you give them the following information:

- Product serial number
(The serial number label is usually on the back of the product.)
- Product model
- Product software version
(Click About, Version Info, or similar button in the product software.)
- Brand and model of your computer

- Your computer operating system name and version
- Names and versions of the software applications you normally use with your product

Note:

For more information on Contacting Customer Support, see the Online User's Guide included in the software CD-ROM.

Europe	
URL	http://www.epson.com Select the Support section of your local EPSON web site for the latest drivers, FAQs, manuals and other downloadables.
Check your Pan-European Warranty Document for information on how to contact EPSON Customer support.	

PicturePack , Paper, and Options

PicturePack and Paper

The following photo cartridge and Epson special paper are available for PictureMate. This information is only for standalone operation.

PictureMate PicturePack T5844 (PictureMate Photo Cartridge and 50 sheets of PictureMate Photo Paper)

PictureMate PicturePack T5846 (PictureMate Photo Cartridge and 150 sheets of PictureMate Photo Paper)
--

Epson Premium Glossy Photo Paper 16:9 Wide
--

For update information, check the Epson support site.

Note:

- The availability of special paper varies by location.*
- You can find the part numbers for the above Epson special paper on the Epson Web site.
➔ See “Contacting Customer Support” on page 59*
- If you want to use paper other than the types listed above, refer to the online User's Guide manual.*

Options

Lithium Ion Battery

An optional rechargeable battery means you can use PictureMate without the AC adapter.

Lithium Ion Battery C12C83108*, model D121A

For details on using the optional battery, see “Using the Optional Battery” on page 47.

Note:

The asterisk is a substitute for the last digit of the product number, which varies by location.

BLUETOOTH Photo Print Adapter (PictureMate PM 260 Only)

BLUETOOTH Photo Print Adapter 2 C12C82438*

For details on using the BLUETOOTH Photo Print Adapter, see “Printing with BLUETOOTH” on page 30.

Note:

The asterisk is a substitute for the last digit of the product number which varies by location.

Printer Specifications

Mechanical

Model name	PictureMate PM 260	PictureMate PM 290
Dimensions W: Width D: Depth H: Height	Storage W: 231 mm (9.1 inches) D: 165 mm (6.5 inches) H: 221 mm (8.7 inches)	Storage W: 231 mm (9.1 inches) D: 165 mm (6.5 inches) H: 250 mm (9.8 inches)
	Printing W: 231 mm (9.1 inches) D: 344 mm (13.5 inches) H: 266 mm (10.5 inches)	Printing W: 231 mm (9.1 inches) D: 344 mm (13.5 inches) H: 295 mm (11.6 inches)
Printable area	Border printing: 3 mm margin for all sides Borderless printing: 0 mm margin	
Paper tray capacity	20 sheets	
Weight	2.4 Kg (5.3lb) without AC adapter and photo cartridge	3.0 Kg (6.6lb) without AC adapter and photo cartridge

Electrical

Rating

Printer

	AC adapter operated	Optional battery operated
Input	DC 20 V, 1.6 A	DC 14.8 V, 1.1 A

AC Adapter

Model	A381H
Input	AC 100-240 V, 50-60 Hz, 0.8-0.4 A, 42 W
Output	DC 20 V, 1.68 A

Printer Operated by AC Adapter (PM 260)

		When Not Using Battery		Using Battery	
		AC 100-120 V	AC 220-240 V	AC 100-120 V	AC 220-240 V
Input Voltage range		AC 100-120 V	AC 220-240 V	AC 100-120 V	AC 220-240 V
Power consumption using AC adapter	Continuous printing	Approx. 23 W	Approx. 24 W	Approx. 32 W	Approx. 32 W
	Low power mode	Approx. 5.0 W	Approx. 5.0 W	Approx. 25 W	Approx. 25 W
	Power off mode	Approx. 0.4 W	Approx. 0.4 W	Approx. 22 W	Approx. 22 W
Input current using AC adapter (Continuous printing)		0.4 A	0.2 A	0.7 A	0.4 A

Printer Operated by AC Adapter (PM 290)

		When Not Using Battery		Using Battery	
		AC 100-120 V	AC 220-240 V	AC 100-120 V	AC 220-240 V
Input Voltage range		AC 100-120 V	AC 220-240 V	AC 100-120 V	AC 220-240 V

Power consumption using AC adapter	Continuous printing	Approx. 23 W	Approx. 24 W	Approx. 32 W	Approx. 32 W
	Low power mode	Approx. 5.6 W	Approx. 6.5 W	Approx. 25 W	Approx. 25 W
	Power off mode	Approx. 0.4 W	Approx. 0.4 W	Approx. 22 W	Approx. 22 W
Input current using AC adapter (Continuous printing)		0.4 A	0.2 A	0.7 A	0.4 A

Environmental

Temperature	Operation: 10 to 35 °C (50 to 95 °F) Storage: -20 to 40 °C (-4 to 104 °F) 1 month at 40 °C (104 °F)
Humidity	Operation:* 20 to 80% RH

* Without condensation

Memory card

Compatible memory cards	
CompactFlash	SDHC Memory Card
Memory Stick*	SD Memory Card
Memory Stick PRO	miniSDHC card**
Memory Stick Duo**	miniSD card**
Memory Stick PRO Duo**	microSDHC card**
Memory Stick Micro**	microSD card**
MagicGate Memory Stick*	MultiMediaCard
MagicGate Memory Stick Duo**	xD-Picture Card
Microdrive	xD-Picture Card Type M xD-Picture Card Type H
Media format DCF	
DCF (Design rule for Camera File system) version 1.0 or 2.0 compliant All card types standard version compliant	
Voltage Requirements	
3.3 V 3.3 V/5 V Combined use Maximum current is 500 mA	

* Maximum capacity is 128 MB.

** Adapter required.

Note:

For the latest information on memory cards available for your printer, contact your dealer or regional Epson sales office.

Photo data

File format	JPEG with Exif Version 2.21 standard TIFF uncompressed RGB data with Exif Version 2.21 Standard
Image size	80 × 80 to 9200 × 9200 pixels
Number of files	Up to 999

CD/DVD drive (PM 290 Only)

Compliant CDs and DVDs

• CD-R	• CD-RW Multi
• CD-RW Hlgh	• CD-RW Ultra
• DVD-R (Read Only)	• DVD-RW (Read Only)

You may not be able to read all types of CDs or DVDs in the PictureMate PM 290's CD/DVD drive if the discs were written by another device. Epson cannot guarantee the compatibility of all CDs or DVDs.

Drive spin rate

	CD	DVD
Read and verify rate	24x CD	5x DVD
Writing rate	10x CD-R 4x CD-RW Multi 10x CD-RW High 10x CD-RW Ultra	Not supported

Photo Cartridge

PictureMate Photo Cartridge

Color	Black, Cyan, Magenta and Yellow
Cartridge life	Use within 6 months of opening the package.
Temperature	Storage: -30 to 40 °C (-22 to 104 °F) 1 month at 40 °C (104 °F) Freezing:* -15 °C (5 °F)

* Ink thaws and is usable after approximately 3 hours at 25 °C (77 °F).



Caution:

- ❑ *Epson recommends the use of genuine Epson PictureMate PicturePack. Other products not manufactured by Epson may cause damage that is not covered by Epson's warranties, and under certain circumstances, may cause erratic printer behavior.*
- ❑ *Use the photo cartridge before the date printed on the cartridge carton.*
- ❑ *Do not refill the photo cartridge. Other products not manufactured by Epson may cause damage that is not covered by Epson's warranties, and under certain circumstances, may cause erratic printer behavior.*

Note:

- ❑ *The photo cartridge packaged with your printer is partly used during initial setup. In order to produce high quality printouts, the print head in your printer will be fully charged with ink. This one-off process consumes a quantity of ink and therefore this cartridge prints fewer pages compared to subsequent photo cartridges.*

- ☐ *To ensure you receive premium print quality and to help protect your print head, a variable ink safety reserve remains in the cartridge when your printer indicates to replace the cartridge. The yields quoted for you do not include this reserve.*

BLUETOOTH (PictureMate PM 290 Only)

Communication system	BLUETOOTH Specification Version 2.0 + EDR
Output power	BLUETOOTH Power Class 2
Frequency band	ISM band 2400-2483.5 MHz

For use only in:

Austria, Belgium, France, Germany, Greece, Italy, Ireland, Luxembourg, Netherlands, Portugal, Russia, Spain, Switzerland, Ukraine, and United Kingdom.

Wireless Regulatory Information:

Epson hereby declares that this product, B382D, is in compliance with the essential requirements and other relevant provisions of Directive 1999/5/EC, also known as the R&TTE Directive, in the following countries:

Austria, Belgium, France, Germany, Greece, Italy, Ireland, Luxembourg, Netherlands, Portugal, Spain, Switzerland, and United Kingdom.

Interface

USB 2.0 Hi-Speed (for PictBridge or USB DIRECT-PRINT compliant devices/ Mass storage class for external storage)
BLUETOOTH Ver.2.0 + EDR compliant (Option/PictureMate PM 260 Only)

Standards and Approvals

Printer

U.S. model:

Safety	UL60950-1 CAN/CSA-C22.2 No.60950-1
EMC	FCC Part15 Subpart B Class B CAN/CSA-CEI/IEC CISPR22 Class B

European model:

EMC	EN55022 Class B EN55024 EMC Directive 89/336/EEC
------------	--

AC Adapter

U.S. model:

Safety	UL60950-1 CAN/CSA-C22.2 No.60950-1
EMC	FCC Part15 Subpart B Class B CAN/CSA-CEI/IEC CISPR22 Class B

European model:

Safety	Low Voltage Directive 73/23/EEC EN60950-1
EMC	EMC Directive 89/336/EEC EN55022 Class B EN55024 EN61000-3-2 EN61000-3-3

Summary of Panel Settings

Select

Select All	Select Source
Select By Date	Select Folder

Print Settings

Paper Size	10 × 15 cm 4 × 6"	
	16:9 wide size	
Layout	Borderless	Half Page
	Border	Proofsheet
	2 Per Print	Backup Index
	4 Per Print	Digital Size
	ID	GreetingCard
Fix Photos	Enhance	
	P.I.M.	
	Off	

Enhance	Standard
	People
	Landscape
	Night scene
Date Stamp	On / Off
Expansion	MAX / MID / MIN
Camera Text	On / Off
Reset	

Edit

Decorate	Add Decoration
	Clear Decoration
Rotate	Do Not Rotate
	90 degrees
	180 degrees
	270 degrees
Color Effects	None / B & W / Sepia
Red-Eye	On / Off
Brightness	-2 to 2
Saturation	-2 to 2
Sharpness	-2 to 2

Help

Improve print quality	Lines
	Color is wrong
	Printout is blurred

Quick Guide	Insert memory card
	Eject memory card
	Load paper
	Change photo cartridge
	Card is inserted in the wrong slot

Save Photo(s)

All Photos
Select Photos

Maintenance

Nozzle Check	Check PicturePack Status
Auto Cleaning	Cleaning Sheet
Head Alignment	

Setup

Slide Show		
Confirm Print Preview	On / Off	
Confirm Print Settings	On / Off	
Language		
Direct Print Settings	Color Effect	
	Red-Eye	
	Brightness	
	Saturation	
	Sharpness	
CD Backup Speed	Normal	
	High Speed	
Bluetooth	Bluetooth Setup	BT Device Name
		BT Comm Mode
		Encryption
		Passkey
	BT Device Address	
Reset Default Settings		

Index

B

- Basic printing, 20
- Battery
 - buying, 60
 - using, 47
- Blank pages, 58
- BLUETOOTH, 30, 61
- Blurry prints, 56
- Brightness, 25
- Button, 10

C

- Camera
 - printing from, 28
 - selected photos (DPOF), 22
- Camera Text, 24
- Care of PictureMate, 50
- Carrying PictureMate, 46
- CD
 - printing from, 26
 - saving files to, 36
- CD/DVD drive, 18
- Cleaning
 - printer, 52
 - print head, 50
- Clogged nozzles, 50
- Color

- problems, 57
- Color Effect, 25
- Consumables, 60
- Control panel, 10
- Customer support, 59

D

- Date printing, 21
- Date Stamp, 24
- Decorate, 25
- Device
 - external, 26 to 29
- DPOF (Digital Print Order Format), 22

E

- Edge guide, 17
- Edit, 24, 25
- Enhance, 24
- Error messages, 53
- Expansion, 24
- External device
 - external, 26 to 29

F

- Faint images, 56
- Fix Photos, 24

- Flash memory drive
 - printing from, 26
 - saving files to, 36

G

- Gaps in image, 56

I

- Image
 - quality, 56 to 57
- Incorrect colors, 57
- Ink, 60

J

- Jams
 - paper, 57

L

- Language, 35
- Layout, 23
- LCD screen, 11
 - messages, 53
- Loading paper, 16

- M**
- Maintenance, 50
 - Margins
 - incorrect, 58
 - Memory card, 15
 - compatibility, 64
 - inserting, 13
 - problems, 55
 - removing, 16
 - Missing colors, 57
- N**
- Nozzle check, 50
 - Nozzle cleaning, 50
- O**
- Options, 60
- P**
- Packing PictureMate, 46
 - Panel, 10
 - Paper
 - buying types, 60
 - feeding problems, 57 to 58
 - handling, 17
 - jam, 57
 - loading, 16
 - PDA
 - printing from, 30
 - Photo
 - quality, 56 to 57
 - PictBridge, 28
 - PicturePack
 - buying, 60
 - replacing, 41 to 45
 - safety instructions, 9
 - Power cable, 46
 - Problems
 - memory card, 55
 - missing colors, 57
 - paper feeding, 57 to 58
 - paper jam, 57
 - print quality, 56 to 57
- Q**
- Quality, 56 to 57
- R**
- Red eye, 25
 - Removing
 - memory card, 16
 - photo cartridge, 41
 - Rotate, 25
- S**
- Saturation, 25
 - Save photos, 36, 38
 - Setup problems, 55
 - Sharpness, 25
 - Smears, 56
- Spec, 62
- T**
- Technical support, 59
 - Thumb drive
 - printing from, 26
 - saving files to, 36
 - Transporting PictureMate, 46
 - Troubleshooting, 53 to 58
- U**
- USB DP (USB Direct Print), 28
- Z**
- Zip disk
 - printing from, 26
 - saving files to, 36
 - Zoom, 21