



Network Guide

Copyright and Trademarks

No part of this publication may be reproduced, stored in a retrieval system, or transmitted in any form or by any means, mechanical, photocopying, recording, or otherwise, without the prior written permission of Seiko Epson Corporation. No patent liability is assumed with respect to the use of the information contained herein. Neither is any liability assumed for damages resulting from the use of the information contained herein.

Neither Seiko Epson Corporation nor its affiliates shall be liable to the purchaser of this product or third parties for damages, losses, costs, or expenses incurred by purchaser or third parties as a result of: accident, misuse, or abuse of this product or unauthorized modifications, repairs, or alterations to this product, or (excluding the U.S.) failure to strictly comply with Seiko Epson Corporation's operating and maintenance instructions.

Seiko Epson Corporation and its affiliates shall not be liable against any damages or problems arising from the use of any options or any consumable products other than those designated as Original Epson Products or Epson Approved Products by Seiko Epson Corporation.

Features Zoran Corporation Integrated Print System (IPS) for print language emulation.



NEST Office Kit Copyright © 1996, Novell, Inc. All rights reserved.

A part of the ICC Profile contained within this product was created by Gretag Macbeth ProfileMaker. Gretag Macbeth is the registered trademark of Gretag Macbeth Holding AG Logo. ProfileMaker is a trademark of LOGO GmbH.

IBM and PS/2 are registered trademarks of International Business Machines Corporation.

Microsoft®, Windows®, and Windows Vista® are registered trademarks of Microsoft Corporation.

Apple®, Macintosh®, Mac®, Mac OS®, AppleTalk®, and Bonjour® are registered trademarks of Apple, Inc. Apple Chancery, Chicago, Geneva, Hoefler Text, Monaco and New York are trademarks or registered trademarks of Apple, Inc.

EPSON and EPSON ESC/P are registered trademarks and EPSON AcuLaser and EPSON ESC/P 2 are trademarks of Seiko Epson Corporation.

Monotype is a trademark of Monotype Imaging, Inc. registered in the United States Patent and Trademark Office and may be registered in certain jurisdictions.

The UFST® (Universal Font Scaling Technology™) product is Monotype Imaging's scalable font rendering subsystem for printer devices.

MicroType® font compression technology from Monotype Imaging works with the UFST® font rendering subsystem to significantly reduce font file sizes.

Monotype Imaging's MicroType® font format is a MicroType-compressed font format.

CG Omega, CG Times, Garamond Antiqua, Garamond Halbfett, Garamond Kursiv, Garamond Halbfett Kursiv are trademarks of Monotype Imaging, Inc. and may be registered in certain jurisdictions.

Scalable type outlines are licensed from Monotype Imaging, Inc.

Albertus, Arial, Coronet, Gillsans, and Times New Roman are trademarks of The Monotype Corporation registered in the United States Patent and Trademark Office and may be registered in certain jurisdictions.

ITC Avant Garde Gothic, ITC Bookman, ITC Zapf-Chancery, and ITC ZapfDingbats are trademarks of International Typeface Corporation registered in the United States Patent and Trademark Office and may be registered in certain jurisdictions.

Clarendon, Helvetica, Palatino, Times and Univers are registered trademarks of Heidelberger Druckmaschinen AG, which may be registered in certain jurisdictions, exclusively licensed through Linotype Library GmbH, a wholly owned subsidiary of Heidelberger Druckmaschinen AG.

Wingdings is a registered trademark of Microsoft Corporation in the United States and other countries.

Marigold is a trademark of Arthur Baker and may be registered in some jurisdictions.

Antique Olive is a trademark of Marcel Olive and may be registered in certain jurisdictions.

HP and HP LaserJet are registered trademarks of the Hewlett-Packard Company.

PCL is a registered trademark of Hewlett-Packard Company.

Adobe, the Adobe logo and PostScript3 are trademarks of Adobe Systems Incorporated, which may be registered in certain jurisdictions.

CompactFlash is a trademark of SanDisk Corporation, registered in the United States and other countries.

This product includes software developed by the University of California, Berkeley, and its contributors.

This product includes RSA BSAFE® Cryptographic software from RSA Security Inc. RSA, BSAFE are either registered trademarks or trademarks of RSA Security Inc. in the United States and/or other countries. RSA Security Inc. All rights reserved.



General Notice: Other product names used herein are for identification purposes only and may be trademarks of their respective owners. Epson disclaims any and all rights in those marks.

Copyright © 2010 Seiko Epson Corporation. All rights reserved.

Contents

Safety Instructions

Warnings, Cautions, and Notes.	8
--	---

Chapter 1 Introduction

About Your Printer.	9
About This Guide.	9
Operating Environment.	10
For users of printers supporting NetWare queue-based printing.	10
For users of printers not supporting NetWare queue-based printing.	12
Inkjet printers/Large format inkjet printers.	13
Features of the Network Interface.	13
Network Interface Operation.	14
Status light.	14
Network connector.	15
About the Software.	15
Terms and Concepts.	16

Chapter 2 How To

Overview.	18
Selecting a Printing Method.	19
Printing from Windows.	19
Printing from Macintosh.	19
Features of the Printing Methods.	20
Installing Components on Your Computer.	22
About Installing Components on Your Computer.	22
Windows 7/Vista/Server 2008.	22
Windows XP.	24
Windows Me/98	26
Windows Server 2003.	28
Windows 2000.	29
Windows NT 4.0.	31
Macintosh.	34

Setting Up the Network Interface.	35
Connecting the Network Interface to the Network.	35
Configuring the Network Interface (For Windows Users).	36
Configuring the Network Interface (For Macintosh Users).	37
Installing the Printer Driver.	39
About Installing the Printer Driver.	39
Windows 7/Vista/Server 2008.	39
Windows XP.	44
Windows Me/98.	49
Windows Server 2003.	51
Windows 2000.	56
Windows NT 4.0.	61
Macintosh.	63
Settings for NetWare Users.	65
Overview.	65
Configuring the Network Interface.	65

Chapter 3 Network Software

EpsonNet Config for Windows.	82
About EpsonNet Config.	82
System Requirements.	82
Installing EpsonNet Config.	83
Accessing the EpsonNet Config User's Guide.	83
EpsonNet Config for Macintosh.	84
About EpsonNet Config.	84
System Requirements.	84
Installing EpsonNet Config.	84
Accessing the EpsonNet Config User's Guide.	85
EpsonNet Config with Web Browser.	85
About EpsonNet Config.	85
Configuring the Network Interface Using Web-Based EpsonNet Config.	86
Opening Screen.	90
EpsonNet Print.	92
About EpsonNet Print.	92
System Requirements.	92
Installing EpsonNet Print.	93
For Windows 7/Vista/XP/Server 2008/Server 2003/2000/NT 4.0 Users.	93
For Windows Me/98/95 Users.	100

Configuring the Printer Port.	105
---------------------------------------	-----

Chapter 4 **Troubleshooting**

General Problems.	108
Cannot configure the network interface or cannot print from the network.. . . .	108
Cannot print even if you have assigned the IP address to the computer and the printer.. . . .	108
Unable to start EpsonNet Config.. . . .	108
The message “EpsonNet Config cannot be used because no network is installed.” appears when you start EpsonNet Config.. . . .	109
The message “Could not complete communicating configuration data” appears when you send settings to the network interface.. . . .	109
Unable to start EpsonNet Config with Web Browser.. . . .	109
The Model Name and IP Address do not appear in the EpsonNet Config dialog box.. . . .	110
An extra account is generated when using the dial-up network.. . . .	110
Problems Specific to Your Network Environment	110
Windows Me/98 environment.	110
Windows 2000/NT environment.	111
Macintosh environment.	112
NetWare environment.	112
Printing a Network Status Sheet.	113
Printing a Network Status Sheet (Large Format Inkjet Printers).	114
Initializing Your Printer.	115
Reformatting the Hard Disk Drive.	115

Chapter 5 **Tips for Administrator**

Setting an IP Address on the Printer’s Control Panel.	116
Network Menu.	117
AUX Menu.	118
Setting an IP Address on the Printer’s Control Panel (Large Format Inkjet Printers).	119
Network Setup Menu.	121
Instructions on Using a Dial-Up Router.	121
Function of Universal Plug and Play.	122
Uninstalling Software.	122
Windows 7/Vista/Server 2008.	122
Windows XP/Server 2003.	123
Windows Me/98/95/2000/NT 4.0.	123

Macintosh.	123
--------------------	-----

Appendix A Software License Terms

Open Source Software Licenses.	124
Bonjour.	124
Other Software Licenses.	131
Info-ZIP copyright and license.	131

Index

Safety Instructions

Warnings, Cautions, and Notes

**Warnings**

must be followed carefully to avoid bodily injury.

**Cautions**

must be observed to avoid damage to your equipment.

Notes

contain important information and useful tips on the operation of your printer.

Chapter 1

Introduction

About Your Printer

Your printer has a built-in Ethernet interface and can connect anywhere on your network using 10Base-T or 100Base-TX. (On some models, 1000Base-T is also supported.) The built-in Ethernet interface, which is called the network interface in this manual, automatically selects the correct standard when it connects to a network. In addition, it supports and automatically selects the IEEE 802.2, IEEE 802.3, Ethernet II, and Ethernet SNAP network protocols.

Because the network interface supports multiple protocols and automatically detects protocols on your network, you can print from Microsoft® Windows® and Apple® Macintosh® applications.

Use the Software Disc to easily configure the network interface for use on the TCP/IP network and install the printer driver. You can use the printer on the TCP/IP network at once.

If you want to configure the network interface for protocols such as TCP/IP, NetWare, NetBEUI, AppleTalk®, IPP, and SNMP, use EpsonNet Config, the configuration utility provided with your product, to quickly and easily configure the network interface to use those protocols.

Note:

- ❑ *The EpsonNet Config utility configures the network interface to work only with protocols that exist on your network. This does not imply that you can use all of the above-mentioned protocols on your network or operating system. The protocols that the network interface can use may vary depending on the operating system and the network configuration.*
- ❑ *Some printers do not support NetWare queue-based printing. See the manual shipped with your printer for details.*

About This Guide

This Network Guide contains information about using the network interface on a network. It includes how to set up the network interface, install the configuration software, and modify network settings of your printer and computers.

For information about your printer, see your User's Guide.

Note:

- ❑ *To read the online guide, you must have Adobe Reader or Adobe Acrobat Reader installed on your computer.*
- ❑ *This guide is written for network administrators, and many of the steps included here require detailed network knowledge and administrator rights.*
- ❑ *The term “network administrator” refers to the person responsible for maintaining the network. “Administrator” is synonymous with “Supervisor” in this guide.*
- ❑ *The term “network interface” refers to the built-in Ethernet interface of the printer in this guide.*
- ❑ *Some screen shots in this guide may list a printer name other than your printer. This difference does not alter the instructions.*
- ❑ *The supported operating systems are different depending on the printer. See your printer’s User’s Guide for the supported operating systems.*

Operating Environment

The network interface supports the following environments.

For users of printers supporting NetWare queue-based printing

OS	Version	Protocol
Windows 7 Windows Vista	-	TCP/IP (using LPR, Standard TCP/IP Port, or EpsonNet Print)
Windows XP (Home, Professional) Windows Server 2008 Windows Server 2003	-	IPP
Windows 2000 (Professional, Server)	-	TCP/IP (using LPR, Standard TCP/IP Port, or EpsonNet Print)
		IPP
		NetBEUI

OS	Version	Protocol	
Windows Me	-	TCP/IP (using EpsonNet Print)	
		IPP	
		NetBEUI	
Windows 98 Windows 98 SE	-	TCP/IP (using EpsonNet Print)	
		NetBEUI	
Windows NT 4.0 with Service Pack 5 or higher	-	TCP/IP (using LPR or EpsonNet Print)	
		NetBEUI	
Macintosh	Mac OS X 10.5	Bonjour	
		TCP/IP	
	Mac OS X 10.4	Bonjour	
		TCP/IP	
		AppleTalk	
	Mac OS X 10.2.4 or later	Rendezvous	
		TCP/IP	
		AppleTalk	
	Mac OS X 10.2 or later	TCP/IP	
		AppleTalk	
	NetWare	3.x	Bindery mode
4.x/IntranetWare		NDS mode	
		Bindery emulation mode	
5.x/6.x		NDS Queue-based print system	
		NDPS	

Note:

- Only the Intel version of Windows NT is supported.
- If you use the printer in a dial-up router environment, you must set an IP address for the printer. Make sure the IP address is suitable for the segment; incorrect IP address may generate unexpected dial-up.

For users of printers not supporting NetWare queue-based printing

OS	Version	Protocol
Windows 7 Windows Vista Windows XP (Home, Professional) Windows Server 2008 Windows Server 2003	-	TCP/IP (using LPR, Standard TCP/IP Port, or EpsonNet Print)
		IPP
Windows 2000 (Professional, Server)	-	TCP/IP (using LPR, Standard TCP/IP Port, or EpsonNet Print)
		IPP
		NetBEUI
Windows Me	-	TCP/IP (using EpsonNet Print)
		IPP
		NetBEUI
Windows 98 Windows 98 SE	-	TCP/IP (using EpsonNet Print)
		NetBEUI
Windows NT 4.0 with Service Pack 5 or higher	-	TCP/IP (using LPR or EpsonNet Print)
		NetBEUI
Macintosh	Mac OS X 10.5	Bonjour
		TCP/IP
	Mac OS X 10.4	Bonjour
		TCP/IP
		AppleTalk
	Mac OS X 10.2.4 or later	Rendezvous
		TCP/IP
		AppleTalk
	Mac OS X 10.2 or later	TCP/IP
		AppleTalk

OS	Version	Protocol
NetWare	5.x/6.x	NDPS

Note:

- ❑ Only the Intel version of Windows NT is supported.
- ❑ If you use the printer in a dial-up router environment, you must set an IP address for the printer. Make sure the IP address is suitable for the segment; incorrect IP address may generate unexpected dial-up.

Inkjet printers/Large format inkjet printers

OS	Version	Protocol
Windows 7 Windows Vista Windows XP (Home, Professional) Windows 2000 (Professional, Server)	-	TCP/IP (using LPR, Standard TCP/IP Port, or EpsonNet Print)
		IPP*
Macintosh	Mac OS X 10.5	Bonjour
		TCP/IP
	Mac OS X 10.4	Bonjour
		TCP/IP
		AppleTalk*
	Mac OS X 10.2.8 or later	Rendezvous
		TCP/IP
		AppleTalk*

* IPP and AppleTalk are not supported on some models.

Features of the Network Interface

- ❑ Connects your Epson printer using a built-in Ethernet interface, which is called the network interface in this manual, to the network.

- ❑ Supports multiple protocols, such as TCP/IP, NetWare, NetBEUI, AppleTalk, and IPP.
- ❑ Supports both 10Base-T and 100Base-TX. (On some models, 1000Base-T is also supported.)
- ❑ Supports DHCP.
- ❑ Supports Automatic Private IP Addressing (APIPA) that assigns an IP address automatically to the network interface even if there is no DHCP server on the network.
- ❑ Supports the Dynamic DNS function.
- ❑ Supports SNMP and MIB.
- ❑ Supports SNTP (Simple Network Time Protocol).
- ❑ Supports Rendezvous on Mac OS X 10.2.4 or later.
- ❑ Supports Bonjour on Mac OS X 10.4 or later.

Network Interface Operation

Status light

The indicator lights provide you with important information on the operations of the network interface.

Laser printers

Status light	Data light	Network Status
Off	Green	Ready (10 M link)
Off	Green (Flashing)	Receiving packets (10 M link)
Orange	Green	Ready (100 M link)
Orange	Green (Flashing)	Receiving packets (100 M link)

Inkjet printers/Large format inkjet printers (Models that do not support 1000 Mbps communication)

Status light	Data light	Network Status
Green	Yellow	Ready (10 M link)
Green	Yellow (Flashing)	Receiving packets (10 M link)
Red	Yellow	Ready (100 M link)
Red	Yellow (Flashing)	Receiving packets (100 M link)

Large format inkjet printers (Models that support 1000 Mbps communication)

Status light	Data light	Network Status
Red	Yellow	Ready (100 M link)
Red	Yellow (Flashing)	Receiving packets (100 M link)
Green	Yellow	Ready (1000 M link)
Green	Yellow (Flashing)	Receiving packets (1000 M link)

Network connector

RJ-45 connector: This connector is used to connect an Ethernet cable to a network. You can use this cable for both 10Base-T and 100Base-TX. (On some models, 1000Base-T is also supported.)



Caution:

You must use the following shielded twisted-pair cable to connect the network interface to a network.

- Category-5 or higher for the 10Base-T or 100Base-TX connection*
- Category-5e or higher for the 1000Base-T connection*

About the Software

The Software Disc provided with your printer includes the following network software.

Note:

The software provided varies depending on your printer model.

- ❑ EpsonNet Config for Windows is a Windows-based configuration utility for administrators that allows you to configure the network interface for various protocols such as TCP/IP, NetWare, MS Network, AppleTalk, IPP, and SNMP. See “EpsonNet Config for Windows” on page 82.
- ❑ EpsonNet Config for Macintosh is a Macintosh-based configuration utility for administrators that allows you to configure the network interface for TCP/IP, AppleTalk, and IPP. See “EpsonNet Config for Macintosh” on page 84.
- ❑ EpsonNet Config with Web Browser is a Web-based configuration utility that allows you to configure the network interface for TCP/IP, NetWare, MS Network, AppleTalk, IPP, and SNMP. See “EpsonNet Config with Web Browser” on page 85.
- ❑ EpsonNet Print is a utility that enables TCP/IP printing for Windows. (Windows 7/Vista/XP/Server 2008/Server 2003/2000/NT 4.0 also support OS standard LPR printing.) See “EpsonNet Print” on page 92.

Terms and Concepts

Configuration -- a prepared set of conditions for proper operation of a device. Configuring the network interface is to prepare it to work with protocols available on a network.

DHCP -- a dynamic host configuration protocol. It is a protocol that assigns dynamic IP addresses to devices on a network.

EtherTalk -- the communication protocol of AppleTalk governing Ethernet transmissions

ftp -- a TCP/IP application protocol for file transfer

lpd -- a TCP/IP remote printing protocol application

Print queue -- a location where a print job is stored as a file, until the network interface sends the job to the assigned printer

Protocol -- a rule that controls how data or information is exchanged through a network. Computers and software cannot communicate with each other using different protocols.

Remote printer -- a shared printer connected elsewhere on the network, but under the control of a NetWare print server

TCP/IP -- Transmission Control Protocol/Internet Protocol, a layer of protocols that provides communication between nodes on a network

SSL -- Secure Sockets Layer, a security protocol for transmitting data between a web server and a browser

Chapter 2

How To

Overview

This section describes the general procedure on how to set up the network interface for use on a network.

1. Check the network interface operation.

Check the functions and operations of the network interface, such as status lights and RJ-45 connector. See “Network Interface Operation” on page 14 for details.

2. Select a printing method.

Select a printing method appropriate for your network environment and operating system. If you are not sure, see “Printing from Windows” on page 19 or “Printing from Macintosh” on page 19 for details.

3. Install the necessary components on your computer.

Make sure the necessary components (such as TCP/IP, NetBEUI, etc.) are installed on the computer, and network settings (such as IP address, subnet mask, etc.) of the computer is set. See “About Installing Components on Your Computer” on page 22 for details.

4. Connect the network interface to the network.

Connect the network interface to the network. See “Connecting the Network Interface to the Network” on page 35 for details.

5. Configure the network interface and install the printer driver.

See “Configuring the Network Interface (For Windows Users)” on page 36 or “Configuring the Network Interface (For Macintosh Users)” on page 37 for details.

6. If necessary, configure the network settings of the network interface using EpsonNet Config.

Configure the network interface for TCP/IP, AppleTalk, MS Network, etc. using EpsonNet Config. For Windows users, see “About EpsonNet Config” on page 82. For Macintosh users, see “About EpsonNet Config” on page 84.

Selecting a Printing Method

Printing from Windows

Check if there is a Windows 7/Vista/XP/Server 2008/Server 2003/2000/NT print server on your network, and then use the suggestions below.

Note:

Only the recommended printing methods are introduced here. See “Features of the Printing Methods” on page 20 for information on additional methods.

If no Windows 7/Vista/XP/Server 2008/Server 2003/2000/NT print server exists

Use a printing method appropriate to your operating system:

- For Windows Me/98
We recommend TCP/IP printing via EpsonNet Print. See “About EpsonNet Print” on page 92.
- For Windows 7/Vista/XP/Server 2008/Server 2003/2000/NT
We recommend TCP/IP printing via LPR. See “Windows 7/Vista/Server 2008” on page 39, “Windows XP” on page 44, “Windows Server 2003” on page 51, “Windows 2000” on page 56, or “Windows NT 4.0” on page 61.

If a Windows 7/Vista/XP/Server 2008/Server 2003/2000/NT print server exists

On the server, set the printer to connect with LPR and turn it into a shared printer. Your clients can then print to this shared printer.

Printing from Macintosh

Mac OS X 10.5

- Bonjour
- EPSON TCP/IP

Mac OS X 10.4

- Bonjour

- EPSON TCP/IP
- EPSON AppleTalk

Mac OS X 10.2.4 or later

- Rendezvous
- EPSON TCP/IP
- EPSON AppleTalk

Mac OS X 10.2 or later

- EPSON TCP/IP
- EPSON AppleTalk

Features of the Printing Methods

This section describes features of the printing methods available for you to choose.

LPR (TCP/IP) printing

Advantages

- No computer as a network interface is required.
- No special utility for Windows 7/Vista/XP/Server 2008/Server 2003/2000/NT is required.
- You can see the printer status using EPSON Status Monitor.
- For Windows 7/Vista/XP/Server 2008/Server 2003/2000/NT, you can create a print log using the event viewer.
- You can print via a router.

Disadvantages

- You need to set up TCP/IP.
- For Windows Me/98, EpsonNet Print must be installed on all computers to use for printing.

Internet printing

Advantages

- No proxy server (computer) is required.
- You can print to the printer over the Internet.

Disadvantages

- EPSON Status Monitor cannot be used.
- TCP/IP and DNS settings are required.
- For Windows 7/Vista/XP/Server 2008/Server 2003/2000, you cannot share the Internet printer.

Microsoft Network Shared printing

Advantages

- Easy to set up (IP address is not required if NetBEUI protocol is installed).
- No computer as a network interface is required.
- No special print utility is required.

Disadvantages

- EPSON Status Monitor cannot be used.
- You cannot print via a router.
- It takes a longer time to start printing because more time is required to search for a network printer.

Installing Components on Your Computer

About Installing Components on Your Computer

Before configuring the network interface and printing from the computer, you need to install the necessary components (such as TCP/IP, NetBEUI, etc.) and assign an IP address and subnet mask for your computer, depending on the printing method you want to use. See the section in this chapter appropriate for your operating system.

Note:

- ❑ *The Windows operating system CD-ROM may be required during the installation.*
- ❑ *When using TCP/IP or IPP for printing, you need to set the IP address, the subnet mask, and the default gateway of the computer.*

Windows 7/Vista/Server 2008

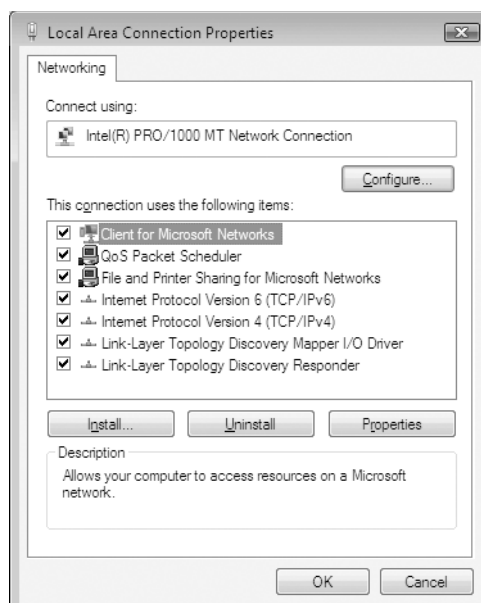
Use the following procedure to install the necessary components.

1. Click **Start**, click **Control Panel**, and then click **View network status and tasks** or double-click **Network and Sharing Center**.
2. Click **Local Area Connection** (Windows 7), or **View Status** (Windows Vista/Server 2008), and then click the **Properties** button.

Note:

*If the User Account Control screen appears, click the **Yes** or **Continue** button.*

3. Check if the following necessary components are in the list. If they are already installed, go to the next chapter.



The following table lists the components required for configuring the network interface with EpsonNet Config.

EpsonNet Config's setting screens	Necessary components
TCP/IP, AppleTalk, IPP, SNMP (IP trap)	Internet Protocol (TCP/IP)
MS Network	Internet Protocol (TCP/IP)

The following table lists the components required for network printing.

Printing method	Necessary components
LPR or Internet printing	Internet Protocol (TCP/IP)

4. If the necessary components are not in the list, click **Install** to install them, as described below.

For LPR or Internet printing:

Internet Protocol (TCP/IP) is installed by default. You cannot add or delete it.

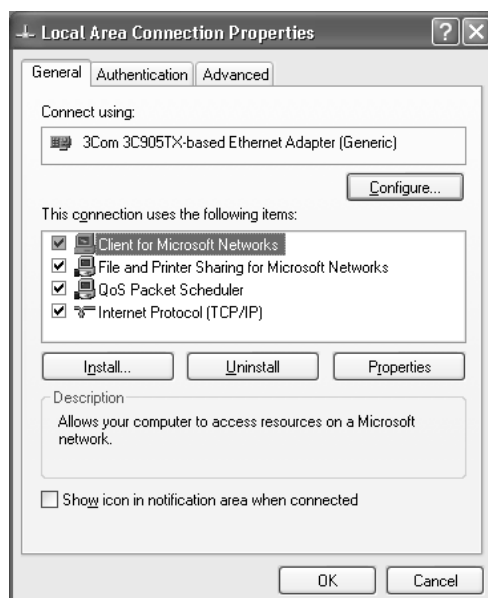
5. For LPR or Internet printing:
Double-click **Internet Protocol Version 4 (TCP/IPv4)** on the Local Area Connection Properties dialog box to open the Internet Protocols Version 4 (TCP/IPv4) Properties dialog box. Set the IP address, the subnet mask, etc. and then click **OK**.
6. Restart the computer.

The necessary components are now installed. Go to the section “Connecting the Network Interface to the Network” on page 35.

Windows XP

For Windows XP, use the following procedure to install the necessary components.

1. Click **Start**, highlight **Control Panel**, and then click **Network and Internet Connections**. Select **Network Connections**.
2. Under **LAN or High-Speed Internet**, click the **Local Area Connection** icon.
3. Under **Network Tasks**, click **Change settings of this connection**.
4. Check if the following necessary components are in the list. If they are already installed, go to the next chapter.



The following table lists the components required for configuring the network interface with EpsonNet Config.

EpsonNet Config's setting screens	Necessary components
TCP/IP, AppleTalk, IPP, SNMP (IP trap)	Internet Protocol (TCP/IP)
MS Network	Internet Protocol (TCP/IP)
NetWare, SNMP (IPX trap)*	Latest Novell Client downloaded from the Novell Web site

* Only for printers supporting NetWare queue-based printing

The following table lists the components required for network printing.

Printing method	Necessary components
LPR or Internet printing	Internet Protocol (TCP/IP)
Microsoft Network Shared printing	TCP/IP or NetBEUI Client for Microsoft Networks
Printing via NetWare server	Latest Novell Client downloaded from the Novell Web site

- If the necessary components are not in the list, click **Install** to install them, as described below.

For LPR or Internet printing:

Internet Protocol (TCP/IP) is installed by default. You cannot add or delete it.

For Microsoft Network Shared printing:

Select **Client** and then click **Add**. Select **Client for Microsoft Networks** and then click **OK**.

For printing via NetWare server:

Download the latest Novell Client from the Novell Web site and install it on the computer. Also, be sure to install either IP or IPX. See the Novell Web site for detailed information.

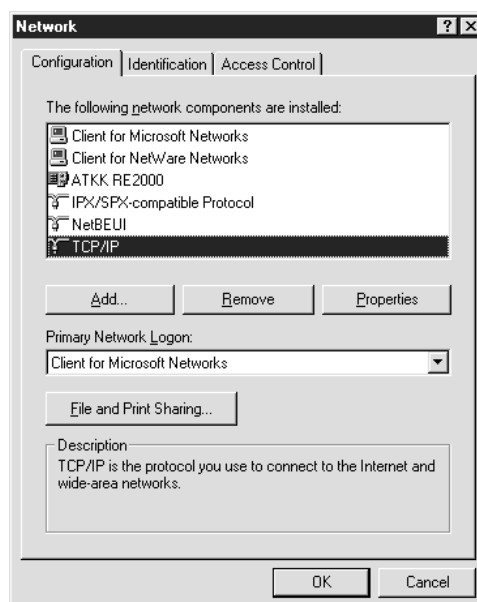
- For LPR, Internet, Microsoft Network Shared printing:
Double-click **Internet Protocol (TCP/IP)** on the Local Area Connection Properties dialog box to open the Internet Protocols (TCP/IP) Properties dialog box. Set the IP address, the subnet mask, etc. and then click **OK**.
- Restart the computer.

The necessary components are now installed. Go to the section "Connecting the Network Interface to the Network" on page 35.

Windows Me/98

For Windows Me/98, use the following procedure to install the necessary components.

1. Click **Start**, point to **Settings**, and then select **Control Panel**.
2. Double-click the **Network** icon. Check if the following necessary components are in the list of installed network components on the Configuration menu. If they are already installed, go to the next chapter.



The following table lists the components required for configuring the network interface with EpsonNet Config.

EpsonNet Config's setting screens	Necessary components
TCP/IP, AppleTalk, IPP, SNMP (IP trap)	TCP/IP
MS Network	NetBEUI or TCP/IP
NetWare, SNMP (IPX trap)*	Latest Novell Client downloaded from the Novell Web site

* Only for printers supporting NetWare queue-based printing

Note for users of printers supporting NetWare queue-based printing:

Do not run Novell Client for Windows 95/98 version 3.00 and Novell Client for Windows NT version 4.50 when using the following modes: NetWare 3.x/4.x Bindery Print Server mode, NetWare 3.x Remote Printer mode, NetWare 4.x Bindery Remote Printer mode, and NetWare 4.x/5.x NDS Remote Printer mode.

The following table lists the components required for network printing.

Printing method	Necessary components
LPR or Internet printing	TCP/IP
Microsoft Network Shared printing	TCP/IP or NetBEUI Client for Microsoft Networks
Printing via NetWare server	Latest Novell Client downloaded from the Novell Web site

- If the necessary components are not in the list, click **Add** to install them, as described below.

For LPR or Internet printing:

Select **Protocol** and then click **Add**. Select **Microsoft** from the Manufacturers list and **TCP/IP** from the Network Protocols list. Then click **OK**.

For Microsoft Network Shared printing:

To use TCP/IP, see the description described earlier to install TCP/IP.

To use NetBEUI, select **Protocol** and then click **Add**. Select **Microsoft** from the Manufacturers list and **NetBEUI** from the Network Protocols list. Then click **OK**.

Select **Client** and then click **Add**. Select **Microsoft** from the Manufacturers list and **Client for Microsoft Networks** from the Network Clients list. Then click **OK**.

For printing via NetWare server:

Download the latest Novell Client from the Novell Web site and install it on the computer. Also, be sure to install either IP or IPX. See the Novell Web site for detailed information.

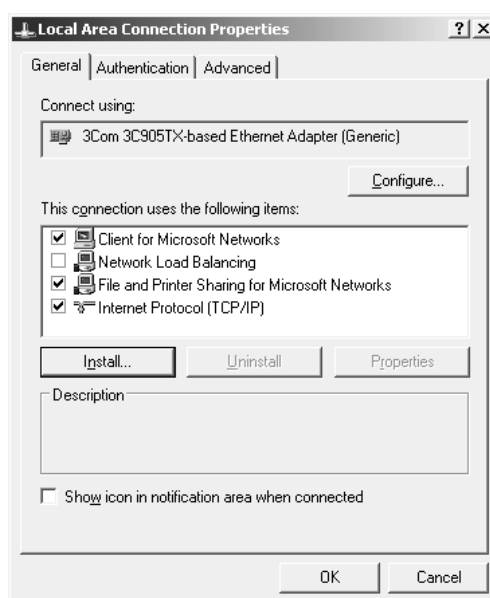
- For LPR, Internet, Microsoft Network Shared printing:
Double-click **TCP/IP** on the Configuration menu to open the TCP/IP Properties dialog box. Set the IP address, the subnet mask, etc. and then click **OK**.
- Restart the computer.

The necessary components are now installed. Go to the section “Connecting the Network Interface to the Network” on page 35.

Windows Server 2003

For Windows Server 2003, use the following procedure to install the necessary components.

1. Click **Start**, point to **Control Panel**, and then select **Network Connections**. Click **Local Area Connections**.
2. Click the **Properties** button.
3. Check if the following necessary components are in the list. If they are already installed, go to the next chapter.



The following table lists the components required for configuring the network interface with EpsonNet Config.

EpsonNet Config's setting screens	Necessary components
TCP/IP, AppleTalk, IPP, SNMP (IP trap)	Internet Protocol (TCP/IP)
MS Network	Internet Protocol (TCP/IP)
NetWare, SNMP (IPX trap)*	Latest Novell Client downloaded from the Novell Web site

* Only for printers supporting NetWare queue-based printing

The following table lists the components required for network printing.

Printing method	Necessary components
LPR or Internet printing	Internet Protocol (TCP/IP)
Microsoft Network Shared printing	TCP/IP or NetBEUI Client for Microsoft Networks
Printing via NetWare server	Latest Novell Client downloaded from the Novell Web site

- If the necessary components are not in the list, click **Install** to install them, as described below.

For LPR or Internet printing:

Internet Protocol (TCP/IP) is installed by default. You cannot add or delete it.

For Microsoft Network Shared printing:

Select **Client** and then click **Add**. Select **Client for Microsoft Networks** and then click **OK**.

For printing via NetWare server:

Download the latest Novell Client from the Novell Web site and install it on the computer. Also, be sure to install either IP or IPX. See the Novell Web site for detailed information.

- For LPR, Internet, Microsoft Network Shared printing:
Double-click **Internet Protocol (TCP/IP)** on the Local Area Connection Properties dialog box to open the Internet Protocols (TCP/IP) Properties dialog box. Set the IP address, the subnet mask, etc. and then click **OK**.
- Restart the computer.

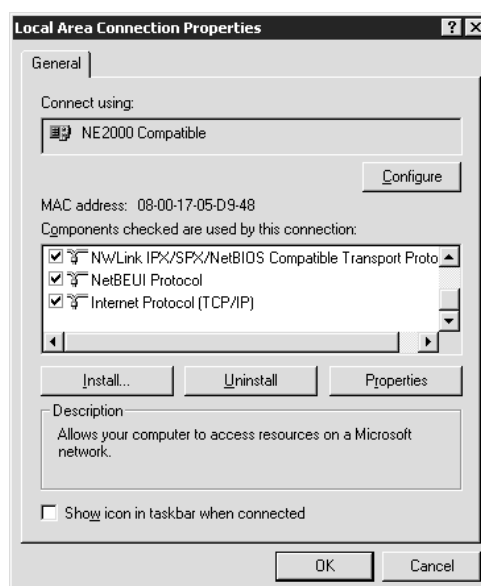
The necessary components are now installed. Go to the section “Connecting the Network Interface to the Network” on page 35.

Windows 2000

For Windows 2000, use the following procedure to install the necessary components.

- Click **Start**, point to **Settings**, and then select **Network and Dial-up Connections**. The Network and Dial-up Connections screen appears.
- Right-click the desired network connection and then select **Properties**.

3. Check if the following necessary components are in the list. If they are already installed, go to the next chapter.



The following table lists the components required for configuring the network interface with EpsonNet Config.

EpsonNet Config's setting screens	Necessary components
TCP/IP, AppleTalk, IPP, SNMP (IP trap)	Internet Protocol (TCP/IP)
MS Network	NetBEUI or Internet Protocol (TCP/IP)
NetWare, SNMP (IPX trap)*	Latest Novell Client downloaded from the Novell Web site

* Only for printers supporting NetWare queue-based printing

Note for users of printers supporting NetWare queue-based printing:

Do not run Novell Client for Windows 95/98 version 3.00 and Novell Client for Windows NT version 4.50 when using the following modes: NetWare 3.x/4.x Bindery Print Server mode, NetWare 3.x Remote Printer mode, NetWare 4.x Bindery Remote Printer mode, and NetWare 4.x/5.x NDS Remote Printer mode.

The following table lists the components required for network printing.

Printing method	Necessary components
LPR or Internet printing	Internet Protocol (TCP/IP)

Printing method	Necessary components
Microsoft Network Shared printing	Internet Protocol (TCP/IP) or NetBEUI Client for Microsoft Networks
Printing via NetWare server	Latest Novell Client downloaded from the Novell Web site

- If the necessary components are not in the list, click **Install** to install them, as described below.

For LPR or Internet printing:

Select **Protocol** and then click **Add**. In the Select Network Protocol dialog box, select **Internet Protocol (TCP/IP)** and then click **OK**.

For Microsoft Network Shared printing:

To use Internet Protocol, see the description described earlier to install Internet Protocol (TCP/IP).

To use NetBEUI, select **Protocol** and then click **Add**. Select **NetBEUI Protocol** and then click **OK**. Select **Client** and then click **Add**. Select **Client for Microsoft Networks** and then click **OK**.

For printing via NetWare server:

Download the latest Novell Client from the Novell Web site and install it on the computer. Also, be sure to install either IP or IPX. See the Novell Web site for detailed information.

- For LPR, Internet, Microsoft Network Shared printing:
Double-click **Internet Protocol (TCP/IP)** on the Configuration menu to open the TCP/IP Properties dialog box. Set the IP address, the subnet mask, etc. and then click **OK**.
- Restart the computer.

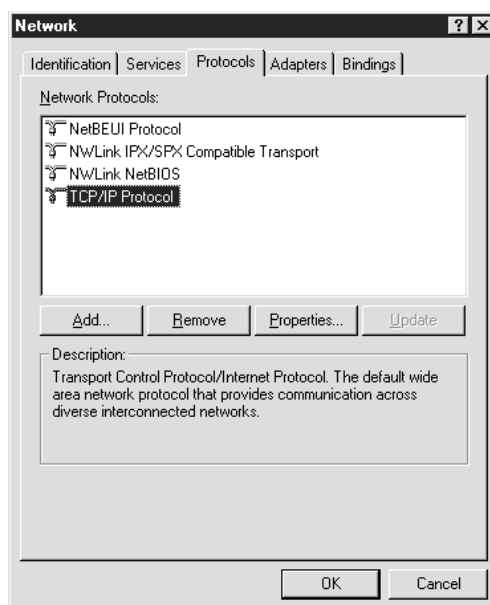
The necessary components are now installed. Go to the section “Connecting the Network Interface to the Network” on page 35.

Windows NT 4.0

For Windows NT 4.0, use the following procedure to install the necessary components.

- Click **Start**, point to **Settings**, and then select **Control Panel**.
- Double-click the **Network** icon in the Control Panel.

3. Check if the following necessary components are in the list. If they are already installed, go to the next chapter.



The following table lists the components required for configuring the network interface with EpsonNet Config.

EpsonNet Config's setting screens	Necessary components
TCP/IP, AppleTalk, IPP, SNMP (IP trap)	TCP/IP
MS Network	NetBEUI or TCP/IP
NetWare, SNMP (IPX trap)*	Latest Novell Client downloaded from the Novell Web site

* Only for printers supporting NetWare queue-based printing

Note for users of printers supporting NetWare queue-based printing:

Do not run Novell Client for Windows 95/98 version 3.00 and Novell Client for Windows NT version 4.50 when using the following modes: NetWare 3.x/4.x Bindery Print Server mode, NetWare 3.x Remote Printer mode, NetWare 4.x Bindery Remote Printer mode, and NetWare 4.x/5.x NDS Remote Printer mode.

The following table lists the components required for network printing.

Printing method	Necessary components
LPR or Internet printing	Protocols menu: TCP/IP Services menu: Microsoft TCP/IP Printing
Microsoft Network Shared printing	Protocols menu: TCP/IP or NetBEUI Services menu: Workstation
Printing via NetWare server	Latest Novell Client downloaded from the Novell Web site

4. If the necessary components are not in the list, click **Add** to install them, as described below.

For LPR or Internet printing:

Select the **Protocols** tab and then click **Add**. Select **TCP/IP** from the list and then click **OK**. Set the IP address, the subnet mask, etc. and then click **OK**.

Select the **Services** tab and then click **Add**. Select **Microsoft TCP/IP Printing** from the list and then click **OK**.

For Microsoft Network Shared printing:

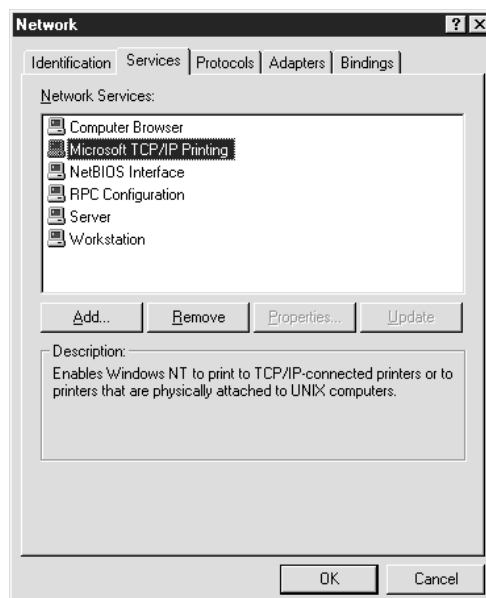
To use TCP/IP, see the description described earlier to install TCP/IP.

To use NetBEUI, select the **Protocols** tab and then click **Add**. Select **NetBEUI** from the list and then click **OK**.

Select the **Services** tab and then click **Add**. Select **Workstation** from the list and then click **OK**.

For printing via NetWare server:

Download the latest Novell Client from the Novell Web site and install it on the computer. Also, be sure to install either IP or IPX. See the Novell Web site for detailed information.



5. Restart the computer.

The necessary components are now installed. Go to the section “Connecting the Network Interface to the Network” on page 35.

Macintosh

To assign an IP address, subnet mask, etc. to your Macintosh, follow the steps below.

Note:

To print using the AppleTalk protocol and configure the network interface with EpsonNet Config for Macintosh, select **Ethernet** or **Built-in Ethernet** on the **AppleTalk** Control Panel or the **AppleTalk** tab. Then configure the network interface with EpsonNet Config for Macintosh.

Mac OS X

1. From the Apple menu, select **System Preferences**.
2. Open the **Network** control panel. Click the **TCP/IP** tab.

Note:

For Mac OS X 10.5, select **Ethernet** as the connecting method on the Network control panel, select the method to assign the IP address from the Configure menu, and then assign the IP address.

3. Select **Built-in Ethernet** from the Show pull down menu.
4. Assign an IP address and other settings if necessary.
5. Click the **Apply Now** button to save any changes.

Go to the section “Connecting the Network Interface to the Network” on page 35.

Setting Up the Network Interface

Connecting the Network Interface to the Network

Follow the instructions below to connect the network interface to the network.

1. Make sure that your printer is turned off.
2. Connect one end of the network cable to the RJ-45 connector on the network interface, and the other end to the network.

**Caution:**

- You must use the following shielded twisted-pair cable to connect the network interface to a network.

-- Category-5 or higher for the 10Base-T or 100Base-TX connection

-- Category-5e or higher for the 1000Base-T connection

- Do not connect the network interface and the computer directly. Be sure to use a HUB to connect the network interface to the network.

Note:

You can use both 10Base-T and 100Base-TX. (On some models, 1000Base-T is also supported.) When you print a lot of data, we recommend you use a higher-speed with light network traffic.

3. Turn on your printer. After the status lights go off, print a network status sheet.

**Caution:**

After turning off the printer, wait until the status lights go off before turning it back on; otherwise the network interface may not work correctly.

Note for Mac OS X 10.2.4 or later:

Since the printer supports Bonjour/Rendezvous and is on by default, you can use the printer on a network just by connecting it to the network. If you want to disable the Bonjour/Rendezvous setting, use the printer's control panel. See "Setting an IP Address on the Printer's Control Panel" on page 116 or "Setting an IP Address on the Printer's Control Panel (Large Format Inkjet Printers)" on page 119 for details.

Now, you can configure the network interface to use on the TCP/IP network and also install the printer driver.

If you are using Windows, see "Configuring the Network Interface (For Windows Users)" on page 36.

If you are using Macintosh, see "Configuring the Network Interface (For Macintosh Users)" on page 37.

Configuring the Network Interface (For Windows Users)

Configure the network interface for use on the TCP/IP network and install the printer driver on your computer.

1. Insert the Software Disc into the CD-ROM drive.
2. The Epson Install Navi screen opens automatically.

If the Epson Install Navi screen does not appear, double-click **EPSETUP.EXE** on the CD-ROM.

3. Make sure that all applications are closed, and then click the **Easy Install** icon.
4. The software license agreement screen appears. Select the **Agree** radio button and then click the **Next** button.
5. Select the **Ethernet Network connection** radio button and then click the **Next** button.

Note:

*If your printer is connected to your computer with a USB cable, select the **USB wired connection** radio button. Then follow the on-screen instructions.*

6. Make sure your printer is connected to the network (a hub or router) and click the **Next** button.

Note:

*If the Windows Security Alert window appears, click the **Allow access** or **Unblock** button; otherwise the printer is not listed on the EpsonNet Setup screen.*

7. EpsonNet Setup starts.

Follow the on-screen instructions to complete the installation.

Configuring the Network Interface (For Macintosh Users)

Configure the network interface for use on the TCP/IP network and install the printer driver on your computer.

1. Insert the Software Disc into the CD-ROM drive.

EPSON folder opens automatically.

2. Double-click the **Install Navi** icon in the EPSON folder.

The Epson Install Navi screen opens.

3. Make sure that all applications are closed, and then click the **Easy Install** icon.
4. The software license agreement screen appears. Select the **Agree** radio button and then click the **Next** button.
5. Select the **Ethernet Network connection** radio button and then click the **Next** button.

Note:

*If your printer is connected to your computer with a USB cable, select the **USB wired connection** radio button. Then follow the on-screen instructions.*

6. Make sure your printer is connected to the network (a hub or router) and click the **Next** button.
7. Enter the password in the Authenticate screen.
8. Click the **Continue** button in the software license agreement screen.
9. Click the **Agree** button to agree to the terms of the software license agreement.

10. Click the **Install** button to start installing the printer driver.
11. Click the **Quit** button to complete the printer driver installation.
12. EpsonNet Setup starts. Follow the on-screen instructions to complete the installation.

Setting Up the Printer

Mac OS X 10.5

1. Open **System Preferences**.
2. Open **Print & Fax**.
3. Click the **+** button to add a new printer.
4. Select the desired printer model that is connected with Bonjour.

Note:

*If your printer is not displayed with the desired connection, click **More Printers**, select the desired connection from the drop down list, and then select the printer model.*

5. Click **Add**.

Now you can use the printer on the TCP/IP network.

Note:

If your product supports the scanning function, see the product's User's Guide to make the settings.

Mac OS X 10.4 or below

1. Open the **Applications** folder.
2. Open the **Utilities** folder.
3. Open **Print Center** (for Mac OS X 10.2 or below) or **Printer Setup Utility** (for Mac OS X 10.3 or later), and then click **Add**.
4. For Mac OS X 10.4, select the printer model that is connected with Bonjour.
For Mac OS X 10.2 or 10.3, select **Rendezvous** from the drop down list, and then select the printer model from the list.

Note:

For Mac OS X 10.4, if your printer is not displayed with the desired connection, click **More Printers**, select the desired connection from the drop down list, and then select the printer model.

5. Click **Add**.

Now you can use the printer on the TCP/IP network.

Note:

If your product supports the scanning function, see the product's User's Guide to make the settings.

Installing the Printer Driver

About Installing the Printer Driver

To print to the network printer, you need to install the printer driver on the computer. See the section in this chapter appropriate for your operating system.

Windows 7/Vista/Server 2008

The printer driver installation procedure differs depending on the printing method you prefer. Epson recommends printing with EpsonNet Print. See "For Windows 7/Vista/XP/Server 2008/Server 2003/2000/NT 4.0 Users" on page 93.

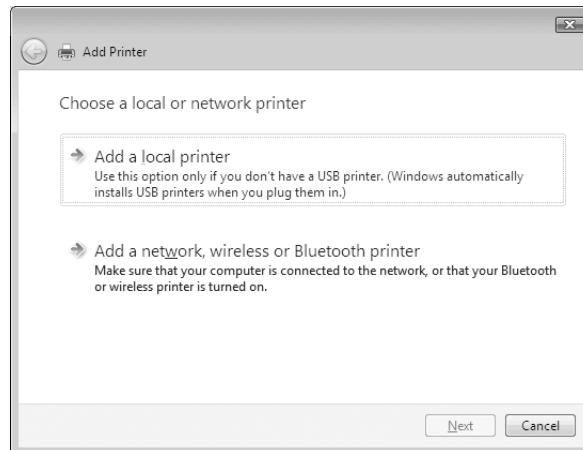
LPR printing

Note:

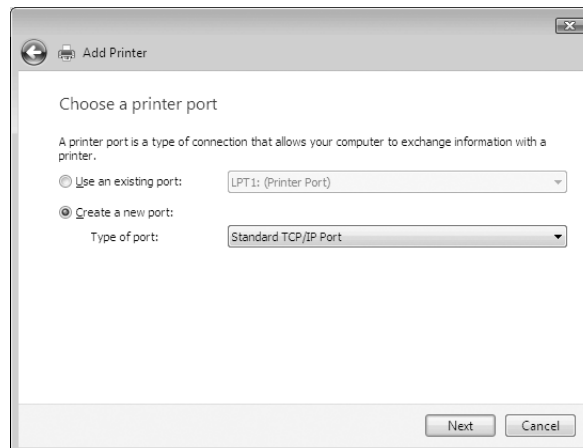
If you are using EpsonNet Print, the setup procedure is different. See "About EpsonNet Print" on page 92 for details.

1. Click **Start, Control Panel**, and then **View devices and printers** (Windows 7) or **Printers** (Windows Vista/Server 2008).
2. Click **Add a printer** to start the Add Printer wizard.

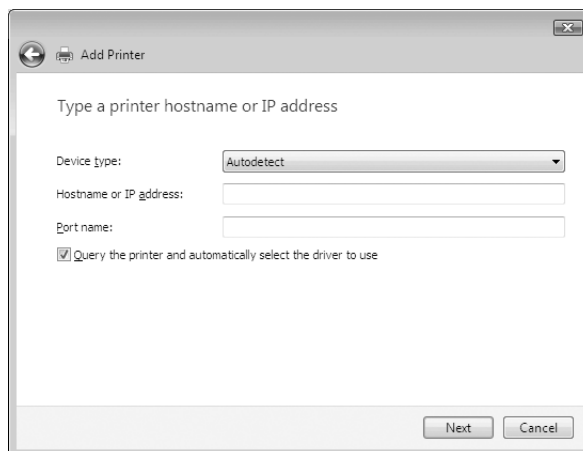
3. Click **Add a local printer**.



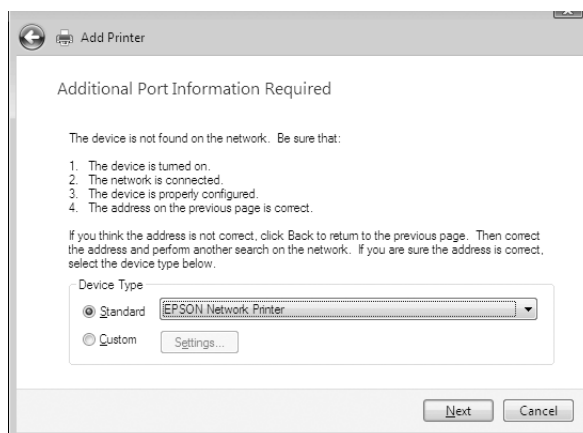
4. Select the **Create a new port** radio button, and then select **Standard TCP/IP Port** from the list. Then click **Next**.



5. Enter the IP address of the network interface and then click **Next**.



6. If an error occurs, the following dialog box appears. Select the **Standard** radio button and then select **EPSON Network Printer**. Click **Next**.



7. Click **Finish**.
8. See “Installing a printer driver” on page 42 to install the printer driver.

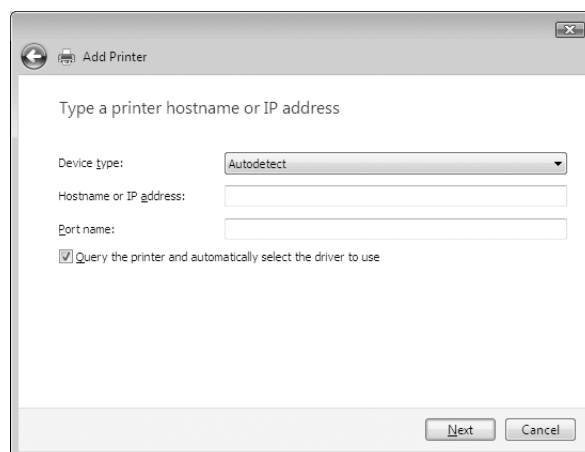
Internet printing

1. Click **Start, Control Panel**, and then **Printers**.
2. Click **Add a printer** to start the Add Printer wizard.
3. Click **Add a network, wireless or Bluetooth printer**.

4. Click **The printer that I want isn't listed**.
5. Select the **Add a printer using a TCP/IP address or hostname** radio button and then click **Next**.
6. Enter the URL of the target device to the **Hostname** or **IP address** box using the format below. The URL should be the same as the URL you set on EpsonNet Config's IPP configuration page.

http://IP address of network interface:631/Printer name

Example: http://192.168.100.201:631/EPSON_IPP_Printer



Note:

To check the IP address of the network interface, use EpsonNet Config. See “About EpsonNet Config” on page 82 for details.

7. Follow the on-screen instructions to set up the device. See “Installing a printer driver” on page 42 if necessary.

Installing a printer driver

1. Insert the Software Disc shipped with the device.
2. Close the EPSON Software Installation screen if it appears.
3. On the Add Printer screen, click the **Have Disk** button. The Install From Disk dialog box appears.
4. Click **Browse**.

5. Select the CD-ROM drive for Drives, and double-click the **WINVISTA_XP_2K** folder or the **WINVISTA_XP64** folder depending on your operating system. Click **Open**.
6. Click **OK** in the Install From Disk dialog box.
7. Select the model name of the device, and then click **Next**.

Note:

If the Add Printer wizard prompts you to select either **Keep existing driver** or **Replace existing driver**, be sure to select the **Replace existing driver** radio button.

8. Click **Finish** and follow the on-screen instructions to complete the setup.

Encrypting print data (Secure IPP printing)

Internet printing (IPP) enables you to encrypt data to print.

Required settings

Configure the following settings using EpsonNet Config with Web Browser. See “EpsonNet Config with Web Browser” on page 85 for details.

- Importing server certificate
- Selecting server certificate
- Setting encryption strength
- Setting printer port

Configuring the printer port

1. Select Connect to a printer on the Internet or on a home or office network: in the Internet printing (IPP) wizard.
2. Enter the URL using the format below.

https://IP address of network interface:443/EPSON_IPP_Printer

Windows XP

For Windows XP, the printer driver installation procedure differs depending on the printing method you prefer. Epson recommends printing with EpsonNet Print. See “For Windows 7/Vista/XP/Server 2008/Server 2003/2000/NT 4.0 Users” on page 93.

LPR printing

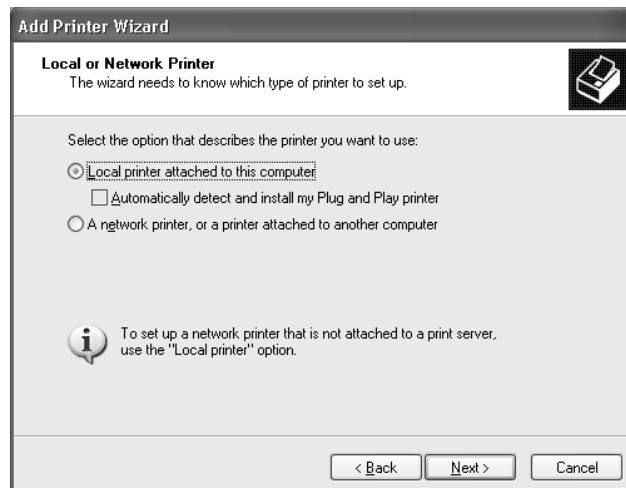
Note:

If you are using EpsonNet Print, the setup procedure is different. See “About EpsonNet Print” on page 92 for details.

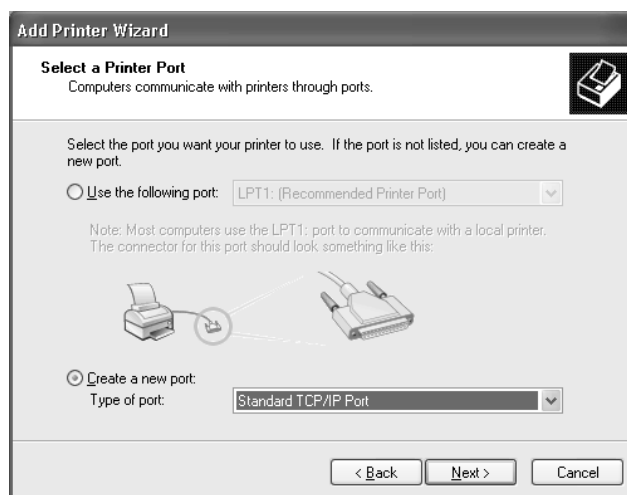
1. Click **Start**, click **Control Panel**, click **Printers and Other Hardware**, and then click **Printers and Faxes**.
2. Under **Printer Tasks**, click **Add a printer** to start the Add Printer wizard, and then click **Next**.
3. Click **Local printer attached to this computer**, clear the **Automatically detect and install my Plug and Play printer** check box, and then click **Next**.

Note:

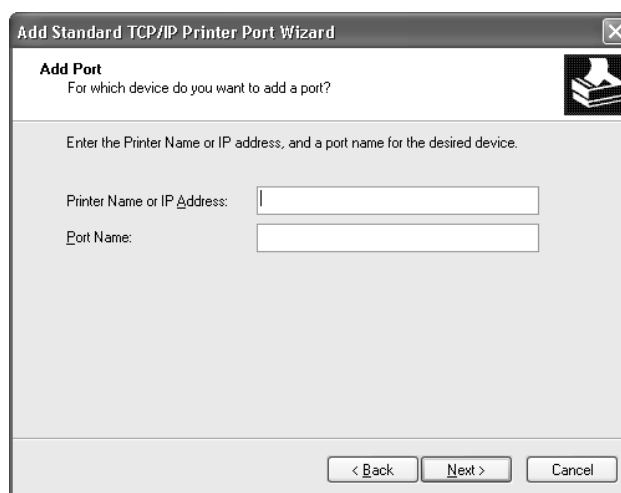
You must clear the **Automatically detect and install my Plug and Play printer** check box because the printer is attached directly to the network, not to a Windows XP computer.



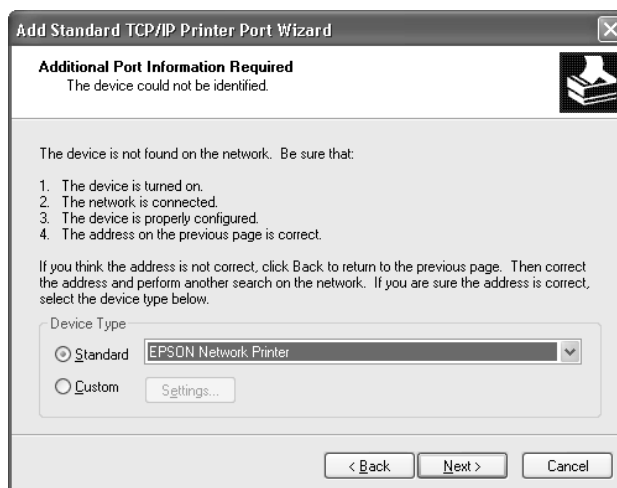
4. Select the **Create a new port** radio button, and then select **Standard TCP/IP Port** from the list. Then click **Next**.



5. Enter the IP address of the network interface and then click **Next**.



- If an error occurs, the following dialog box appears. Select the **Standard** radio button and then select **EPSON Network Printer**. Click **Next**.



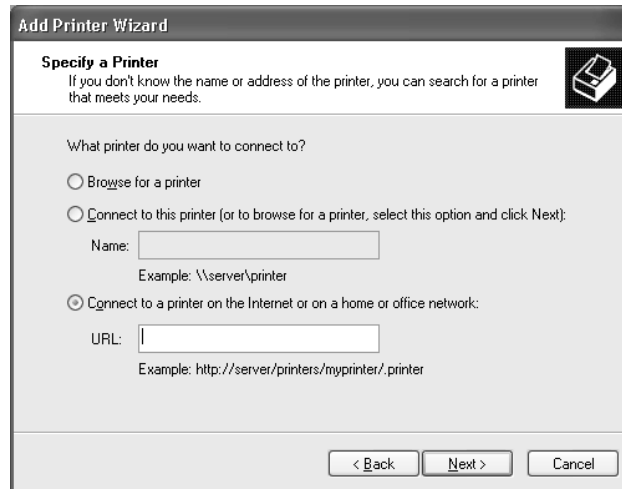
- Click **Finish**.
- See “Installing a printer driver” on page 48 to install the printer driver.

Internet printing

- Click **Start**, click **Control Panel**, click **Printers and Other Hardware**, and then click **Printers and Faxes**.
- Under **Printer Tasks**, click **Add a printer** to start the Add Printer wizard, and then click **Next**.
- Click **A network printer, or a printer attached to another computer**, and then click **Next**.
- Select the **Connect to a printer on the Internet or on a home or office network** radio button.
- Enter the URL of the target printer using the format below. The URL should be the same as the URL you set on EpsonNet Config’s IPP configuration page.

http://IP address of printer:631/Printer name

Example: http://192.168.100.201:631/EPSON_IPP_Printer



Note:

To check the IP address of the network interface, use *EpsonNet Config*. See “About EpsonNet Config” on page 82 for details.

6. Follow the on-screen instructions to set up the printer. See “Installing a printer driver” on page 48 if necessary.

Microsoft Network Shared printing

1. Click **Start**, click **Control Panel**, click **Printers and Other Hardware**, and then click **Printers and Faxes**.
2. Under **Printer Tasks**, click **Add a printer** to start the Add Printer wizard, and then click **Next**.
3. Click **A network printer, or a printer attached to another computer**, and then click **Next**.
4. Select the **Browse for a printer** radio button, and then click **Next**.
5. Enter the following in the Printer box or select the printer you want to use from the Shared printers list box, and then click **Next**.

\\NetBIOS name of network interface\Device name of network interface

6. Follow the on-screen instructions to set up the printer. See “Installing a printer driver” on page 48 if necessary.

Installing a printer driver

1. Insert the Software Disc shipped with the printer.
2. Close the Software Installation screen if it appears.
3. On the Add Printer screen, click the **Have Disk** button. The Install From Disk dialog box appears.
4. Click **Browse**.
5. Select the CD-ROM drive for Drives, and double-click the **WINVISTA_XP_2K** or **WINXP_2K** folder. Click **Open**.
6. Click **OK** in the Install From Disk dialog box.
7. Select the model name of the printer, and then click **Next**.

Note:

*If the Add Printer wizard prompts you to select either **Keep existing driver** or **Replace existing driver**, be sure to select the **Replace existing driver** radio button.*

8. Click **Finish** and follow the on-screen instructions to complete the setup.

Encrypting print data (Secure IPP printing)

Internet printing (IPP) enables you to encrypt data to print.

Required settings

Configure the following settings using EpsonNet Config with Web Browser. See “EpsonNet Config with Web Browser” on page 85 for details.

- Importing server certificate
- Selecting server certificate
- Setting encryption strength
- Setting printer port

Configuring the printer port

1. Select Connect to a printer on the Internet or on a home or office network: in the Internet printing (IPP) wizard.

2. Enter the URL using the format below.

https://IP address of network interface:443/EPSON_IPP_Printer

Windows Me/98

For Windows Me/98, the printer driver installation procedure differs depending on the printing method you prefer. Epson recommends printing with EpsonNet Print. See “For Windows Me/98/95 Users” on page 100.

LPR printing

Since Windows Me/98 does not support LPR, standard TCP/IP printing cannot be used. However, you can print via TCP/IP using the EpsonNet Print utility included on the Software Disc. First, install EpsonNet Print. Then, install the printer driver. See “About EpsonNet Print” on page 92 for more details.

Internet printing (Windows Me)

Installing the IPP client

The IPP client must be installed on your computer. Follow the steps below to install it.

1. Insert the Windows Me CD-ROM.
2. Select the **add-ons** folder, and then select the **IPP** folder.
3. Double-click **wpnpins.exe**. Then follow the on-screen instructions.
4. Click **OK** to restart your computer.

Setting up the printer

Connect your computer to a printer through IPP.

1. Click **Start**, point to **Settings**, and then select **Printers**.
2. Double-click **Add Printer**, and then click **Next**.
3. Select the **Network Printer** radio button, and then click **Next**.

4. Type the URL of the printer, and then click **Next**.

http://IP address of network interface:631/printer name

Example: http://192.168.100.201:631/EPSON_IPP_Printer

Note:

To check the IP address of the network interface, use *EpsonNet Config*. See “About EpsonNet Config” on page 82 for details.

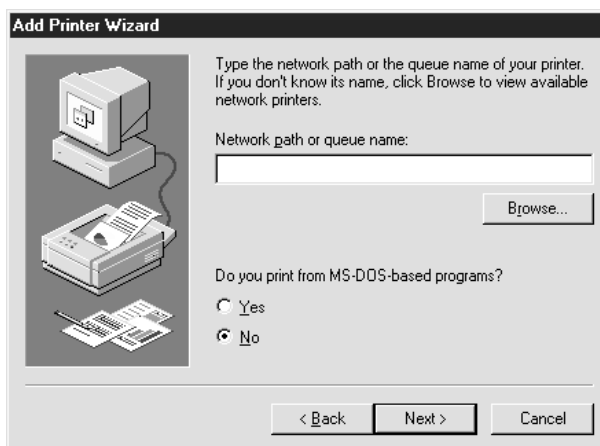
5. See “Installing a printer driver” on page 51 to install the printer driver.

Microsoft Network Shared printing

1. Click **Start**, point to **Settings**, and then select **Printers**.
2. Double-click **Add Printer**, and then click **Next**.
3. Select the **Network Printer** radio button, and then click **Next**.

\\NetBIOS name of network interface\Device name of network interface

4. Click **Browse**, and then select the network path from the list. If you cannot browse, enter the following in the Network path or queue name box.



5. The Add Printer wizard appears. Click **Next**.
6. Follow the on-screen instructions to set up the printer. See “Installing a printer driver” on page 51 to install the printer driver.

Installing a printer driver

1. Insert the Software Disc shipped with the printer.
2. Close the Software Installation screen if it appears.
3. On the Add Printer screen, click the **Have Disk** button. The Install From Disk dialog box appears.
4. Click **Browse**.
5. Select the CD-ROM drive for Drives, and then double-click the **WIN9X** folder. Click **OK**.
6. Click **OK** in the Install From Disk dialog box.
7. Select the model name of the printer, and then click **Next**.

Note:

*If the Add Printer wizard prompts you to select either **Keep existing driver** or **Replace existing driver**, be sure to select the **Replace existing driver** radio button.*

8. Click **Finish** and follow the on-screen instructions to complete the setup.

Windows Server 2003

For Windows Server 2003, the printer driver installation procedure differs depending on the printing method you prefer. Epson recommends printing with EpsonNet Print. See “For Windows 7/Vista/XP/Server 2008/Server 2003/2000/NT 4.0 Users” on page 93.

LPR printing

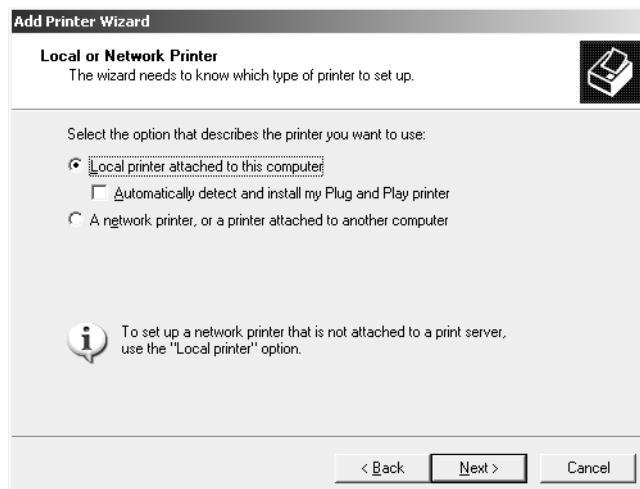
Note:

If you are using EpsonNet Print, the setup procedure is different. See “About EpsonNet Print” on page 92 for details.

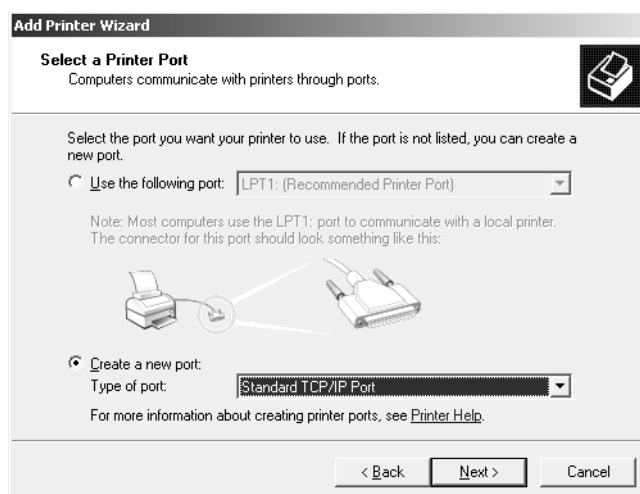
1. Click **Start**, and then select **Printers and Faxes**.
2. Double-click the **Add Printer** icon to start the Add Printer wizard, and then click **Next**.
3. Click **Local printer attached to this computer**, clear the **Automatically detect and install my Plug and Play printer** check box, and then click **Next**.

Note:

You must clear the **Automatically detect and install my Plug and Play printer** check box because the printer is attached directly to the network, not to a computer.



4. Select the **Create a new port** radio button, and then select **Standard TCP/IP Port** from the list. Click **Next**.



5. When Add Standard TCP/IP Printer Port Wizard dialog box appears, click **Next**.

6. Enter the IP address of the network interface and then click **Next**.

7. If an error occurs, the following dialog box appears. Select the **Standard** radio button and then select **EPSON Network Printer**. Click **Next**.

8. Click **Finish**.
9. See “Installing a printer driver” on page 55 to install the printer driver.

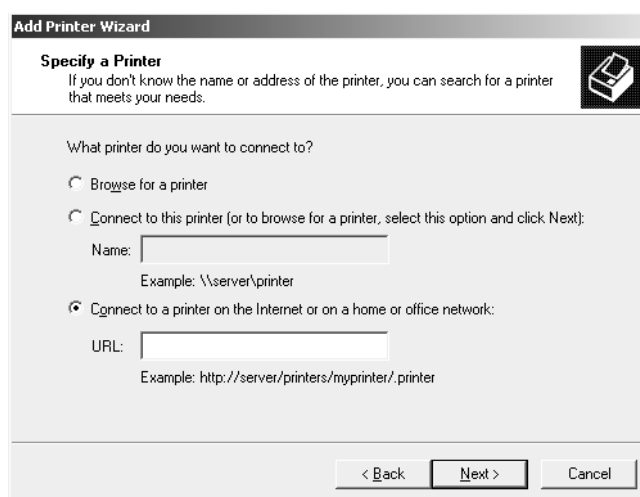
Internet printing

1. Click **Start**, and then select **Printers and Faxes**.

2. Double-click the **Add Printer** icon to start the Add Printer wizard, and then click **Next**.
3. Select **A network printer, or a printer attached to another computer**, and then click **Next**.
4. Select the **Connect to a printer on the Internet or on a home or office network** radio button.
5. Enter the URL of the target printer using the format below. The URL must be the same URL you set on EpsonNet Config's IPP configuration page.

http://IP address of printer:631/Printer name

Example: http://192.168.100.201:631/EPSON_IPP_Printer



Note:

To check the IP address of the network interface, use EpsonNet Config. See “About EpsonNet Config” on page 82 for details.

6. Follow the on-screen instructions to set up the printer. See “Installing a printer driver” on page 55 if necessary.

Microsoft Network Shared printing

1. Click **Start**, and then select **Printers and Faxes**.
2. Double-click the **Add Printer** icon to start the Add Printer wizard, and then click **Next**.
3. Click **A network printer, or a printer attached to another computer**, and then click **Next**.

4. Select the **Browse for a printer** radio button, and then click **Next**.
5. Enter the following in the Printer box or select the printer you want to use from the Shared printers list box. Click **Next**.

\\NetBIOS name of network interface\Device name of network interface

6. Follow the on-screen instructions to set up the printer. See “Installing a printer driver” on page 55 if necessary.

Installing a printer driver

1. Insert the Software Disc shipped with the printer.
2. Close the Software Installation screen if it appears.
3. On the Add Printer screen, click the **Have Disk** button. The Install From Disk dialog box appears.
4. Click **Browse**.
5. Select the CD-ROM drive for Drives, and double-click the **WINVISTA_XP_2K**, **WINXP_2K**, or **WIN2000** folder. Click **Open**.
6. Click **OK** in the Install From Disk dialog box.
7. Select the model name of the printer, and then click **Next**.

Note:

*If the Add Printer wizard prompts you to select either **Keep existing driver** or **Replace existing driver**, be sure to select the **Replace existing driver** radio button.*

8. Click **Finish** and then follow the on-screen instructions to complete the setup.

Encrypting print data (Secure IPP printing)

Internet printing (IPP) enables you to encrypt data to print.

Required settings

Configure the following settings using EpsonNet Config with Web Browser. See “EpsonNet Config with Web Browser” on page 85 for details.

- Importing server certificate

- Selecting server certificate
- Setting encryption strength
- Setting printer port

Configuring the printer port

1. Select **Connect to a printer on the Internet or on a home or office network:** in the Internet printing (IPP) wizard.
2. Enter the URL using the format below.

https://IP address of network interface:443/EPSON_IPP_Printer

Windows 2000

For Windows 2000, the printer driver installation procedure differs depending on the printing method you prefer. Epson recommends printing with EpsonNet Print. See “For Windows 7/Vista/XP/Server 2008/Server 2003/2000/NT 4.0 Users” on page 93.

LPR printing

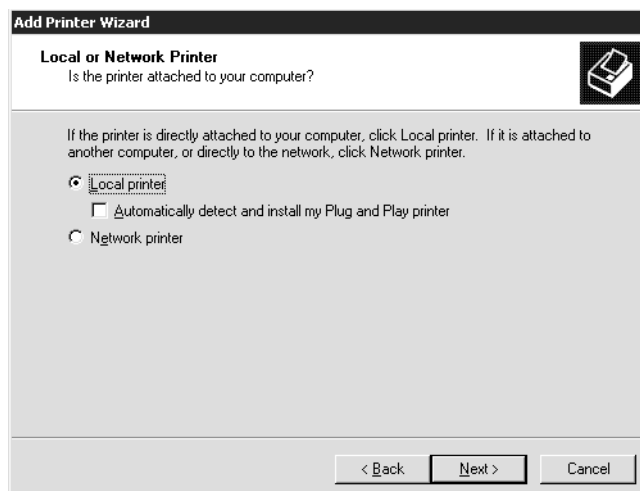
Note:

If you are using EpsonNet Print, the setup procedure is different. See “About EpsonNet Print” on page 92 for details.

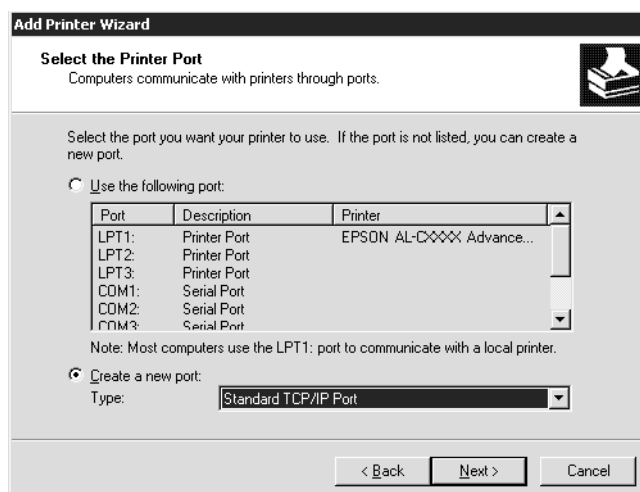
1. Click **Start**, point to **Settings**, and then select **Printers**.
2. Double-click **Add Printer** to start the Add Printer wizard, and then click **Next**.
3. Click **Local printer**, clear the **Automatically detect and install my Plug and Play printer** check box, and then click **Next**.

Note:

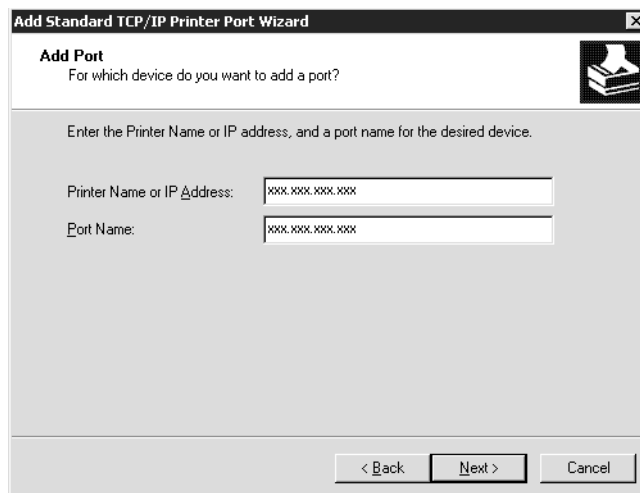
You must clear the **Automatically detect and install my Plug and Play printer** check box because the printer is attached directly to the network, not to a Windows 2000 computer.



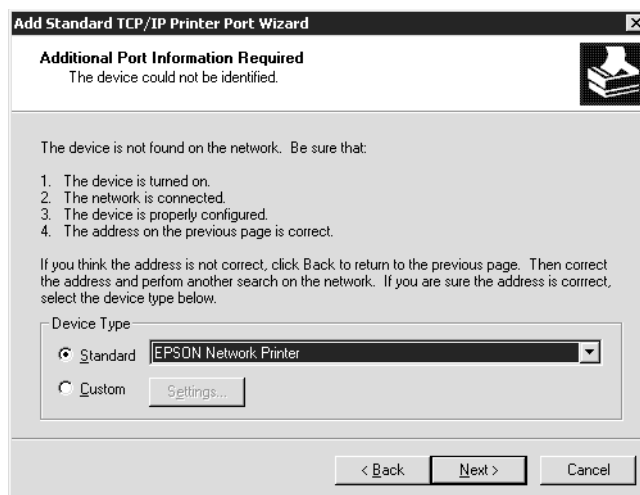
4. Select the **Create a new port** radio button, and then select **Standard TCP/IP Port** from the list. Then click **Next**.



5. Enter the IP address of the network interface and then click **Next**.



6. If an error occurs, the following dialog box appears. Select the **Standard** radio button and then select **EPSON Network Printer**. Click **Next**.



7. Click **Finish**.
8. See “Installing a printer driver” on page 59 to install the printer driver.

Internet printing

1. Click **Start**, point to **Settings**, and then select **Printers**.

2. Double-click **Add Printer** to start the Add Printer wizard, and then click **Next**.
3. Select the **Network printer** radio button and then click **Next**.
4. Select the **Connect to a printer on the Internet or on your intranet** radio button.
5. Enter the URL of the target printer using the format below. The URL should be the same as the URL you set on EpsonNet Config's IPP configuration page.

http://IP address of printer:631/Printer name

Example: http://192.168.100.201:631/EPSON_IPP_Printer

Note:

To check the IP address of the network interface, use EpsonNet Config. See "About EpsonNet Config" on page 82 for details.

6. Follow the on-screen instructions to set up the printer. See "Installing a printer driver" on page 59 if necessary.

Microsoft Network Shared printing

1. Click **Start**, point to **Settings**, and then select **Printers**.
2. Double-click **Add Printer** to start the Add Printer wizard, and then click **Next**.
3. Select the **Network printer** radio button and then click **Next**.
4. Select the **Type the printer name, or click Next to browse for a printer** radio button.
5. Enter the following in the Name box or click **Next** to browse for a printer.

\\NetBIOS name of network interface\Device name of network interface

6. Follow the on-screen instructions to set up the printer. See "Installing a printer driver" on page 59 if necessary.

Installing a printer driver

1. Insert the Software Disc shipped with the printer.
2. Close the Software Installation screen if it appears.

3. On the Add Printer screen, click the **Have Disk** button. The Install From Disk dialog box appears.
4. Click **Browse**.
5. Select the CD-ROM drive for Drives, and double-click the **WINVISTA_XP_2K**, **WINXP_2K**, or **WIN2000** folder. Click **Open**.
6. Click **OK** in the Install From Disk dialog box.
7. Select the model name of the printer, and then click **Next**.

Note:

*If the Add Printer wizard prompts you to select either **Keep existing driver** or **Replace existing driver**, be sure to select the **Replace existing driver** radio button.*

8. Click **Finish** and follow the on-screen instructions to complete the setup.

Encrypting print data (Secure IPP printing)

Internet printing (IPP) enables you to encrypt data to print.

Required settings

Configure the following settings using EpsonNet Config with Web Browser. See “EpsonNet Config with Web Browser” on page 85 for details.

- Importing server certificate
- Selecting server certificate
- Setting encryption strength
- Setting printer port

Configuring the printer port

1. Select Connect to a printer on the Internet or on a home or office network: in the Internet printing (IPP) wizard.
2. Enter the URL using the format below.

https://IP address of network interface:443/EPSON_IPP_Printer

Windows NT 4.0

For Windows NT 4.0, the printer driver installation procedure differs depending on the printing method you prefer. Epson recommends printing with EpsonNet Print. See “For Windows 7/Vista/XP/Server 2008/Server 2003/2000/NT 4.0 Users” on page 93.

LPR printing

Note:

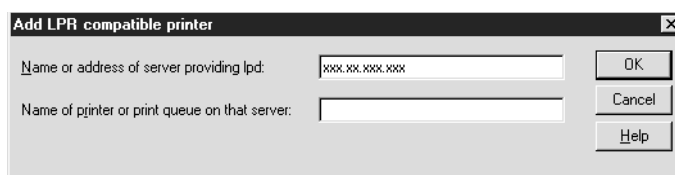
If you are using EpsonNet Print, the setup procedure is different. See “About EpsonNet Print” on page 92 for details.

1. Click **Start**, point to **Settings**, and then select **Printers**.
2. Double-click the **Add Printers** icon.
3. Select the **My Computer** radio button, and then click **Next**.
4. Click **Add Port** in the Add Printer wizard dialog box.
5. Select **LPR Port** from the Available Printer Port list, and then click **New Port**.

Note:

*You cannot use the **Lexmark TCP/IP Network Port** with this network interface.*

6. Enter the IP address of the network interface in the first text box and the printer name in the second text box. Click **OK**.



7. In the Printer Ports dialog box, click **Close**.
8. In the Add Printer Wizard dialog box, click **Next**.
9. See “Installing a printer driver” on page 62 to install the printer driver.

Microsoft Network Shared printing

1. Click **Start**, point to **Settings**, and then select **Printers**.
2. Double-click **Add Printer**.
3. Select the **Network printer server** radio button and then click **Next**. The Connect to Printer dialog box appears.
4. Select the printer you want to configure from the **Shared Printers** list. If you cannot select the printer, enter the following in the Printer box:

\\NetBIOS name of network interface\Device name of network interface
5. Click **OK**.
6. Follow the on-screen instructions to set up the printer. See “Installing a printer driver” on page 62 if necessary.

Installing a printer driver

1. Insert the Software Disc shipped with the printer.
2. Close the Software Installation screen if it appears.
3. On the Add Printer screen, click the **Have Disk** button. The Install From Disk dialog box appears.
4. Click **Browse**.
5. Select the CD-ROM drive for Drives, and then double-click the **WINNT40** folder. Click **Open**.
6. Click **OK** in the Install From Disk dialog box.
7. Select the model name of the printer, and then click **Next**.

Note:

- Announce the share name to your clients so that they know the share name of the printer they want to use.*
 - If the Add Printer wizard prompts you to select either **Keep existing driver** or **Replace existing driver**, be sure to select the **Replace existing driver** radio button.*
8. Click **Finish** and follow the on-screen instructions to complete the setup.

Macintosh

Follow the steps below to set a printer.

Note:

Make sure that the printer driver is installed on your Macintosh before following the steps below. See the manual shipped with your printer for instruction on how to install the printer driver.

Mac OS X 10.5

Bonjour printing

1. Open **System Preferences**.
2. Open **Print & Fax**.
3. Click the **+** button to add a new printer.
4. Select the desired printer model that is connected with Bonjour.
5. Click **Add**.

TCP/IP printing

1. Open **System Preferences**.
2. Open **Print & Fax**.
3. Click the **+** button to add a new printer.
4. Select the desired printer model.
5. If the desired printer model does not appear in the list, click **More Printers**, select **EPSON TCP/IP** from the drop down list, and then select the printer model.
6. Click **Add**.

Mac OS X 10.4 or below

Bonjour/Rendezvous printing

1. Open the **Applications** folder.

2. Open the **Utilities** folder.
3. Open **Print Center** (for Mac OS X 10.2 or below) or **Printer Setup Utility** (for Mac OS X 10.3 or later), and then click **Add**.
4. For Mac OS X 10.4, select the printer model that is connected with Bonjour.
For Mac OS X 10.2 or 10.3, select **Rendezvous** from the drop down list, and then select the printer model from the list.
5. Click **Add**.

TCP/IP printing

1. Open the **Applications** folder.
2. Open the **Utilities** folder.
3. Open **Print Center** (for Mac OS X 10.2 or below) or **Printer Setup Utility** (for Mac OS X 10.3 or later), and then click **Add**.
4. For Mac OS X 10.4, click **More Printers**, select **EPSON TCP/IP** from the drop down list, and then select the printer model.
For Mac OS X 10.2 or 10.3, select **EPSON TCP/IP** from the drop down list, and then select the printer model from the list.
5. Click **Add**.

AppleTalk printing

1. Open the **Applications** folder.
2. Open the **Utilities** folder.
3. Open **Print Center** (for Mac OS X 10.2 or below) or **Printer Setup Utility** (for Mac OS X 10.3 or later), and then click **Add**.
4. For Mac OS X 10.4, click **More Printers**, select **EPSON AppleTalk** from the drop down list, select the zone from the drop down list, and then select the printer model.
For Mac OS X 10.2 or 10.3, select **EPSON AppleTalk** from the drop down list, select the zone from the drop down list, and then select the printer model from the list.
5. Click **Add**.

Settings for NetWare Users

Overview

If you are using a printer that supports NetWare queue-based printing, see “Configuring the Network Interface” on page 65 for detailed information.

Note:

To find out whether your printer supports NetWare queue-based printing, see the User’s Guide.

Configuring the Network Interface

This section explains how to configure the network interface for NetWare. First, you need to set up the printer in a NetWare environment, and then configure the network interface using EpsonNet Config.

Introduction to NetWare settings

Supported systems

Server environment

- NetWare 3.1/3.11/3.12/3.2 (Bindery)
- NetWare 4.1/4.11/4.2 (NDS, Bindery emulation)
- IntranetWare (NDS, Bindery emulation)
- NetWare 5.0/5.1 (NDS, NDPS)
- NetWare 6.0 (NDS, NDPS)

Client environment

The client environment must be supported by NetWare. The clients are able to use the printer driver mounted on the network interface.

The following Novell Client is supported.

- For Windows 98:
Novell Client 3.4 or later for Windows 98/95
- For Windows 2000/NT 4.0:
Novell Client 4.8 or later for Windows 2000/NT 4.0

- For Windows XP:
Novell Client 4.9 or later for Windows XP

About modes

You can choose either the Print Server, Remote Printer, or Standby mode. We recommend that you use the Print Server mode unless the number of users exceeds the limit.

Features of these modes are described below.

Print Server mode (NDS/Bindery Print Server):

- High-speed printing with direct printing
- Uses the NetWare user account
- Can connect up to 8 file servers simultaneously
- Can register up to 32 print queues

Remote Printer mode:

- A NetWare user account is not required.
- A print server is needed to control the remote printer.
- Can attach up to 16 printers for NetWare 3.x, and up to 255 for NetWare 4.x or later.

Note:

When you turn on the printer, the user account is temporarily accessed in the Remote Printer mode. If there is no user account available, turn on the printer before connecting the client to the network.

Standby mode (factory default mode):

The Standby mode is the default mode. This mode disables all NetWare related functions. Use the Standby mode when you are not using the network interface in a NetWare environment.

Instructions for using NetWare

Printing a text file

When you print a text file using the NPRINT command of NetWare or DOS, redirection, misconversion or a gap in characters may occur depending on the client environment.

IPX routing protocol "NLSP"

It is possible to set the IPX routing protocol "NLSP" from NetWare 4.x or later; however, the network interface does not support NLSP. RIP/SAP controls the communication.

You can select the routing protocol from a) NLSP with RIP/SAP Compatibility, or b) RIP/SAP Only. If you remove the bind of RIP or SAP when NLSP with RIP/SAP Compatibility is specified, the network interface then cannot communicate with the file server and NDS. (See "Protocols" and "Bindings" in NetWare's INETCFG utility.)

Bindery and NDS

- ❑ You can check the bindery context path from the server console by using the SET BINDERY CONTEXT command.
- ❑ If the bindery context path has not been set, or if you want to use the printing environment of another context from a non-NDS client, you need to specify the context for the bindery context. Use the SET BINDERY CONTEXT command to set the context in the AUTOEXEC.NCF file.
- ❑ You cannot use the bindery print server mode with EpsonNet Config if you are running Novell Client for Windows 95/98 version 3.00 or Novell Client for Windows NT version 4.50. To configure the network interface for bindery mode, use Novell IntranetWare Client or EpsonNet Config with Web Browser.

See your NetWare documentation for more information.

Time required to recognize the network interface

It takes up to two minutes for the NetWare server to recognize the network interface, after the printer is turned on. During this start-up time, the status sheet does not show the correct information.

Frame type

The same frame type should be used for the NetWare server and IPX router on the same network. If more than one frame type is used on the same network, bind all the frame types to the NetWare servers and IPX routers.

For NetWare 5.x

The IPX protocol must be installed (bound) on the NetWare 5.x server.

About modes

If the mode you have logged in is different from the mode you set for the network interface, a message appears when you try to configure the network interface for NetWare. If you do not want to change the current settings, click **Cancel** and log in again using the same mode set for the network interface.

Using Bindery Print Server (NetWare 3.x/4.x)

This section contains instructions on using the network interface in the Print Server mode on NetWare 3.x/4.x/IntranetWare with Bindery emulation.

Note:

The network interface in the Print Server mode of NetWare 3.x does not allow you to use the Print Server status display control with PCONSOLE.

1. Turn on your printer.
2. From any NetWare client, log in to the target NetWare server with supervisor privileges. You must log in with the bindery connection.
3. Configure the network interface using EpsonNet Config. See the EpsonNet Config User's Guide for details.

If NetWare objects are already created, you can also use EpsonNet Config with Web Browser. See the EpsonNet Config with Web Browser help for details.

Using NDS Print Server (NetWare 4.x/5.x/6.0)

This section contains instructions for using the network interface in the Print Server mode on NetWare 4.x, IntranetWare, NetWare 5.x, or NetWare 6.0 with NDS mode.

1. Turn on your printer.
2. From any NetWare client, log in to the target context of the NDS tree as an ADMIN.
3. Configure the network interface using EpsonNet Config. See the EpsonNet Config User's Guide for details.

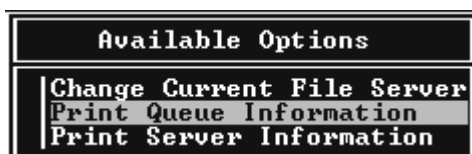
If NetWare objects are already created, you can also use EpsonNet Config with Web Browser. See the EpsonNet Config with Web Browser help for details.

Using Remote Printer Mode (NetWare 3.x)

For NetWare 3.x users, follow the steps below to make the printer environment with PCONSOLE.

Creating print queues in a file server

1. From any NetWare client, log in to the network with supervisor privileges.
2. Run PCONSOLE. From the Available Options screen, select **Print Queue Information** and press **Enter**.



3. Press the **Insert** key on your keyboard and enter the print queue name. Press **Enter**.

Note:

Since your clients need the print queue name you set here when they use the printer, announce the print queue name to your clients.

4. From the Print Queue list, select the print queue name that you just entered and press **Enter**. From the Print Queue Information list, select **Queue Users** and press **Enter**. Next, select **EVERYONE** from the list. If **EVERYONE** is not in the list, press **Insert** and select **EVERYONE** from the queue user list.

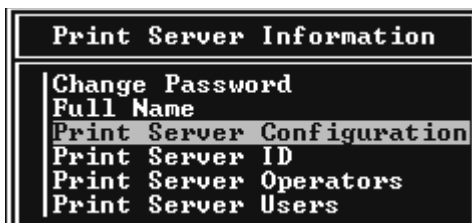
Creating a print server

1. From the Available Options screen, select **Print Server Information** and press **Enter**.

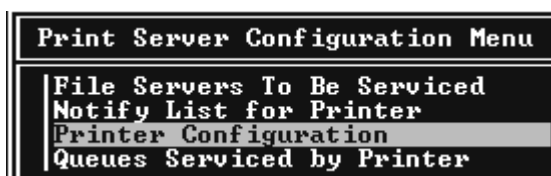


2. Press the **Insert** key on your keyboard and type the print server name. Press **Enter**. It is a good idea to write down the print server name for later use.

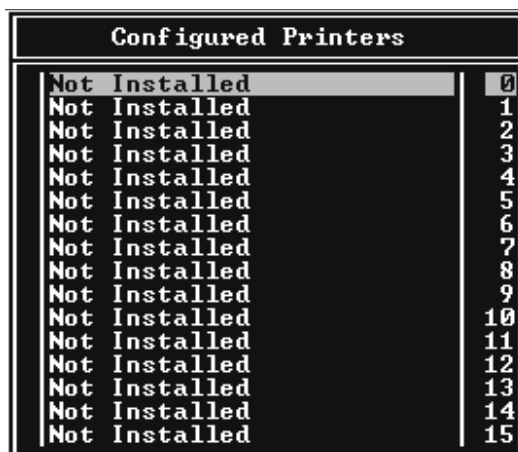
- From the Print Server list, select the print server name that you just typed and press **Enter**. From the Print Server Information list, select **Print Server Configuration** and press **Enter**.



- Select **Printer Configuration** from the Print Server Configuration Menu and press **Enter**.



- From the Configured Printers list, select **Not Installed** (port number = 0) and press **Enter**.



- From the Printer configuration screen, type the printer name. Highlight **Type** and press **Enter**. Select **Remote Parallel, LPT1** for Remote Printer mode.

```

Printer 0 configuration
Name: Printer 0
Type: Local Parallel, LPT1
Use interrupts: Yes
IRQ: 7
Buffer size in K: 3
Starting form: 0
Queue service mode: Change forms as needed
Baud rate:
Data bits:
Stop bits:
Parity:
Use X-On/X-Off:

```

Note:

Be sure to select **Remote Parallel, LPT1** for Remote Printer mode.

- Press **Esc**; then press **Enter** to save your changes.
- Press **Esc**.
- Select **Queues Serviced by Printer** from the Print Server Configuration menu and press **Enter**.

```

Print Server Configuration Menu
File Servers To Be Serviced
Notify List for Printer
Printer Configuration
Queues Serviced by Printer

```

- Select the printer that you want to use from the Defined Printers list and press **Enter**.
- Press the **Insert** key and assign a queue to the print server port from the Available Queues list.
- Specify a priority level between 1 to 10. One is top priority.
- Press **Esc** to exit PCONSOLE.

Configuring for NetWare using EpsonNet Config

- Turn on your printer.

2. Load the print server from the file server's system console which the print queue volume is set.
>LOAD PSERVER print server name you set using PCONSOLE
3. Configure the network interface using EpsonNet Config. See the EpsonNet Config User's Guide for details.

If NetWare objects are already created, you can also use EpsonNet Config with Web Browser. See the EpsonNet Config with Web Browser help for details.

Using Bindery Remote Printer Mode (NetWare 4.x)

Follow the steps below to make the printer environment on NetWare 4.x and IntranetWare with Bindery emulation.

Note:

- Assign Trusteeships for users if necessary.*
- Be sure to use PCONSOLE to set the print queue and print server instead of using NWAdmin.*

Creating objects

1. From any NetWare client, log in to the server as an ADMIN. Make sure to log in with Bindery connection.

Note:

If the client using for this setting has been logged in with NDS mode, press F4 key while PCONSOLE is starting to switch to the bindery mode.

2. Run PCONSOLE. From the Available Options screen, select **Print Queues** and press **Enter**. Press **Insert** and type the print queue name. Press **Enter**.

Note:

Since your clients need the print queue name you set here when they use the printer, announce the print queue name to your clients.

3. From the Print Queue list, select the print queue name that you just entered and press **Enter**. From the Print Queue Information list, select **Queue Users** and press **Enter**. Next, select **EVERYONE** from the list. If **EVERYONE** is not in the list, press **Insert** and select **EVERYONE** from the queue user list.
4. From the Available Options screen, select **Print Servers** and press **Enter**. Press **Insert** and type the print server name. Press **Enter**.

5. Press **Esc** to exit PCONSOLE, and log out from the server.
6. Log in to the server as an ADMIN. Be sure to log in with NDS connection.
7. Start NWAdmin.
8. To create the Printer Object, click the container specified as the Bindery context and select **Create** from the Object menu, then **Printer**. Type the printer name and click **Create**.
9. To assign the print queue, double-click the Printer object icon (created in step 8). The Printer dialog box appears.
10. Click **Assignments** and then click **Add**. From the print queue list, select the queue (created in step 2) and click **OK**.
11. Click **Configuration** in the Printer dialog box, and select **Parallel** from the Printer type pull-down menu.
12. Click **Communication**. The Parallel Communication dialog box appears.
13. Select **LPT1** for Port; check **Polled** for Interrupts; and check **Manual load (Remote from Print Server)** for Connection type, then click **OK**.
14. Click **OK** in the Printer dialog box.
15. To assign the printer, double-click the Print Server object icon (created in step 4). The Print Server dialog box appears.
16. Click **Assignments** and then click **Add**. From the printer object list, select the printer object (created in step 8) and click **OK**.
17. In the Print Server dialog box, select the assigned printer from the printer object list, and click the **Printer Number** button to set the printer number from 0 to 15, then click **OK**.
18. To confirm the objects you have assigned, double-click the Print Server object icon. Click **Print Layout**, and check that the print server, printer, and print queue are connected.

Configuring for NetWare using EpsonNet Config

1. Turn on your printer.

2. Load the print server from the file server's system console which the print queue volume is set.
>LOAD PSERVER print server name you set using PCONSOLE
3. Configure the network interface using EpsonNet Config. See the EpsonNet Config User's Guide for details.

If NetWare objects are already created, you can also use EpsonNet Config with Web Browser. See the EpsonNet Config with Web Browser help for details.

Using NDS Remote Printer Mode (NetWare 4.x/5.x/6.0)

Follow the steps below to make the printer environment using NWAdmin under NetWare 4.x, IntranetWare, NetWare 5.x, or NetWare 6.0 with NDS mode.

Creating objects

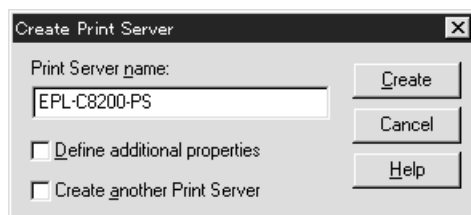
1. From any NetWare client, log in to the target context of the NDS tree as an ADMIN.
2. Run the Administrator tool (NWAdmin).
3. Create a printer:

Click the directory context icon, and select **Create** from the **Object** menu, then **Printer**. Type the Printer name and click **Create**.



4. Create a print server:

Click the directory context icon, and select **Create** from the **Object** menu, then **Print Server**. Type the Print Server name and click **Create**.

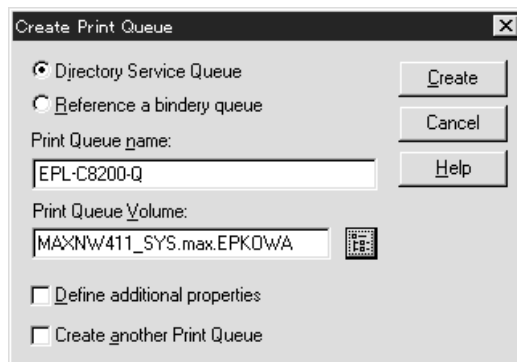


5. Create a print queue:

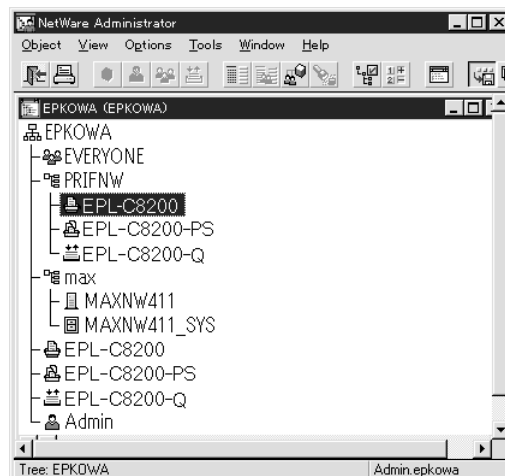
Click the directory context icon, and select **Create** from the **Object** menu, then **Print Queue**. Type the Print Queue name and select the Print Queue Volume, then click **Create**. Double-click the print queue object, and register the user.

Note:

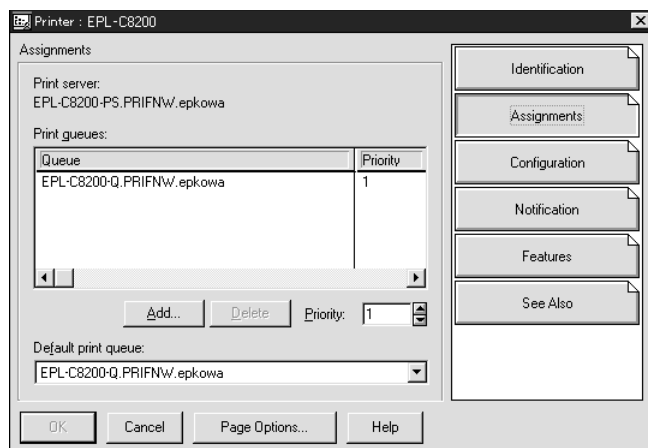
Since your clients need the print queue name you set here when they use the printer, announce the print queue name to your clients.



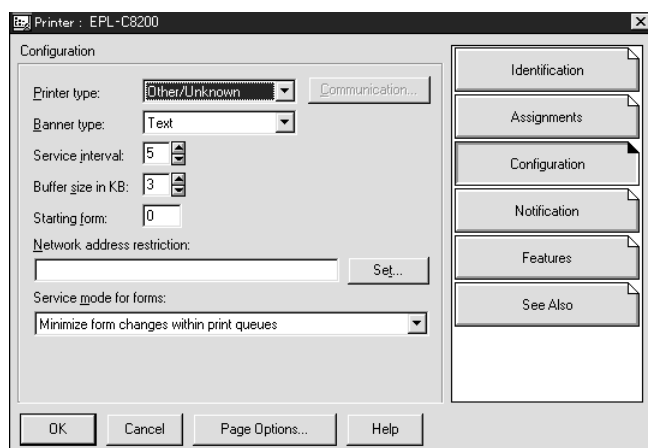
6. Double-click the **Printer Object** icon in the NetWare Administrator screen.



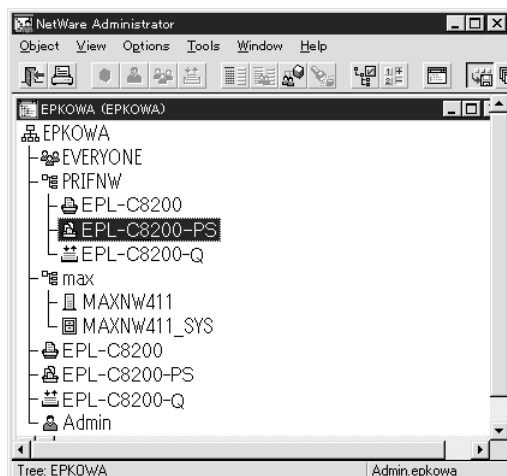
7. In the Printer dialog box appears, click **Assignments** and then click **Add**.



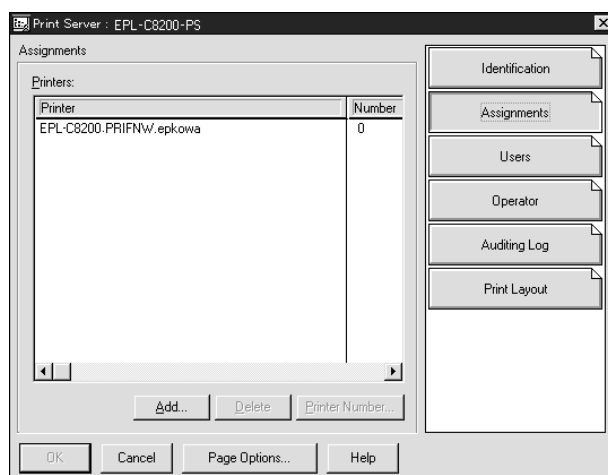
8. From the print queue list, select the queue you created in step 5 and click **OK**.
9. Click **Configuration**, and select **Other/Unknown** for the Printer type list box and click **OK**.



10. Double-click the **Print Server Object** icon in the NetWare Administrator screen.

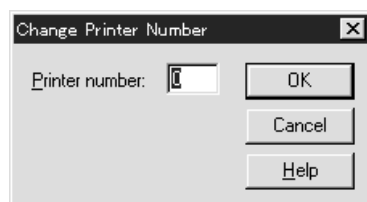


11. In the Print Server dialog box that appears, click **Assignments** and then click **Add**.



12. From the printer object list, select the printer object you want to assign and click **OK**.

13. Go back to the screen in step 11, and click the **Printer Number** button to set the printer number from 0 to 254.



14. To confirm the objects you have assigned, double-click the Print Server object icon. Click **Print Layout**, and check that the print server, printer, and print queue are connected.

Configuring for NetWare using EpsonNet Config

1. Turn on your printer.
2. Load the print server from the file server's system console which the print queue volume is set.
>LOAD PSERVER print server name you set using NWAdmin
3. Configure the network interface using EpsonNet Config. See the EpsonNet Config User's Guide for details.

If you use the NetWare objects that are already created, you can use EpsonNet Config with Web Browser too. See the EpsonNet Config with Web Browser help for details.

Instructions for using a dial-up network

This section explains about using a dial-up network.

Note:

The primary server described in this manual indicates a primary time server which offers time to the workstations on the network.

Using a dial-up network in each mode

Print Server mode

You must use a dedicated dial-up line.

Since polling is performed on the file server in the print server mode, no vicarious response by the router is possible. Therefore, no dial-up connection is possible in this case.

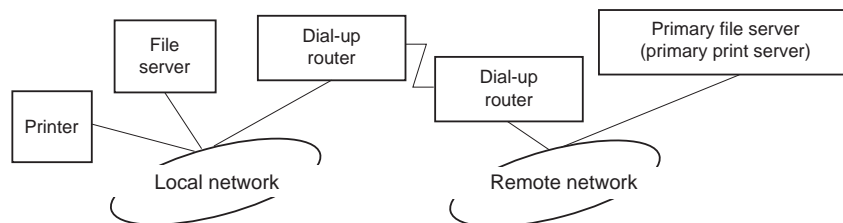
Remote Printer mode

In Remote Printer mode, use of a router with a vicarious response function allows the primary server to be installed at the dial-up destination. However, an extra account might be generated when the primary server is down. To avoid that, it is recommend to use connections via a dedicated dial-up line.

Follow the instructions for using a dial-up line.

When there is a primary server at the dial-up destination

For local networks with file servers:



- When the power is turned on

A dial-up is generated because access is made to a local file server first and then to a primary server. There is no problem since this dial-up only occurs at startup.

- When the network interface is not correctly set

A dial-up is generated because access is made to a local file server first and then to a primary server. This dial-up is repeated at intervals of approximately 5 minutes. Make the network interface settings correctly to avoid this problem.

- During normal operation (standby)

An SPX Watchdog packet is sent according to the NetWare protocol convention. Use a router with a vicarious response function to avoid a dial-up.

- During normal operation (printing)

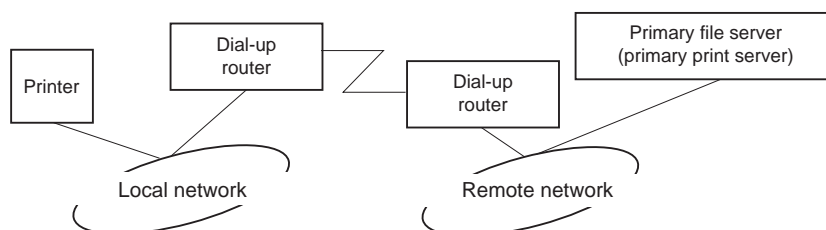
A dial-up is generated while the printing data is being transferred. This is not a problem because it is a dial-up specific to the dial-up network.

- When the primary server is down during operation

A dial-up is generated because a connection to the primary server is attempted periodically. Since this is attributable to the automatic re-connection function, turn off the printer once.

- When the file server on the local network is down

When there is no file server on the local network, NetWare cannot be used on the local network. In this case, the NetWare protocol for the network interface is also not available. No dial-up is generated under this condition. When the file server on the local network is restored, the network interface is also automatically restored.

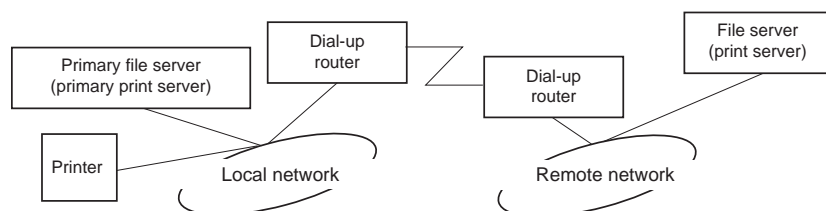
For local networks with no file server:

Depending on the router settings, the NetWare protocol can be used without a file server on a local network. This setup follows the same pattern as that described above.

When there is a primary server in the local network

Even if a primary server is installed on the local network, an unnecessary dial-up may be generated depending on the configuration.

The following problems are common to both Print Server mode and Remote Printer mode.


 When the power is turned on

Since access is made only to the primary server, no dial-up is generated.

 When the network interface is not correctly set

Since access is made only to the primary server, no dial-up is generated. However, if the file server/print server of the remote network is erroneously set as the primary server, an unnecessary dial-up might be generated. Correct the settings to avoid this problem.

 During normal operation (standby/printing)

Since access is made only to the primary server, no dial-up is generated.

 When the primary server is down during operation

Connection to the primary server is periodically attempted, but no dial-up is generated. However, if the router is set to pass SAP packets (Find Nearest Server), an unnecessary dial-up might be generated. To avoid this, turn off the printer once, or do not allow the router to pass SAP packets (Find Nearest Server).

Chapter 3

Network Software

This chapter explains how to use the network software provided with your printer.

Note:

The software provided varies depending on your printer model.

EpsonNet Config for Windows

About EpsonNet Config

EpsonNet Config is a Windows-based configuration software for administrators to configure the network interface for TCP/IP.

Note:

Be sure to use EpsonNet Config included on the Software Disc shipped with this product.

Note for Windows 98/Me/NT 4.0 users:

EpsonNet Config on the Software Disc shipped with this product does not support Windows 98, Me, and NT 4.0. To configure the network interface, use the previous version of the software (EpsonNet Config Ver.2). You can download EpsonNet Config Ver.2 from the Epson Web site.

http://support.epson.net/netconfig_down.html

System Requirements

The following table lists the system requirements of EpsonNet Config.

Operating systems	Windows 7 Windows Vista Windows XP Professional/Home Edition Windows Server 2008/Windows Server 2008 R2 Windows Server 2003/Windows Server 2003 R2 Windows 2000 Server/Professional
Memory	150 MB or more

Hard disk drive space	50 MB
-----------------------	-------

Installing EpsonNet Config

Follow the steps below to install EpsonNet Config on your computer to configure the network interface.

Note:

- ❑ *Log on to the operating system with an administrator account to install EpsonNet Config.*
 - ❑ *If you add or delete protocols or services from your operating system after installing EpsonNet Config, EpsonNet Config may not work correctly. If this happens, uninstall EpsonNet Config and then install it again.*
1. Make sure all the applications are closed, then insert the Software Disc in the CD-ROM drive.
 2. The Software Installation screen opens automatically.

If the Software Installation screen does not appear, double-click **EPSETUP.EXE** on the CD-ROM.

3. Click **User Installation** if it appears.
4. Click the **Install Network Utility** button.
5. Click the icon located next to EpsonNet Config Ver.3.
6. Follow the on-screen instructions to complete the installation.

Note:

*If the Windows Security Alert window appears after you start EpsonNet Config, click the **Allow access** or **Unblock** button; otherwise the devices are not listed on the screen of EpsonNet Config.*

Accessing the EpsonNet Config User's Guide

The EpsonNet Config User's Guide contains detailed information on EpsonNet Config. Follow the steps below to access the EpsonNet Config User's Guide.

1. Click **Start**, point to **Programs** (for Windows 2000 users) or **All Programs** (for Windows 7, Vista, XP, Server 2008, and Server 2003 users), select **EpsonNet**, and then select **EpsonNet Config V3**.

2. Click **EpsonNet Config User's Guide**.

The EpsonNet Config User's Guide appears. By clicking the links on the front page or contents page, you can get information on using EpsonNet Config.

EpsonNet Config for Macintosh

About EpsonNet Config

EpsonNet Config for Macintosh is a Macintosh-based configuration software for administrators that allows you to configure the network interface for TCP/IP.

Note:

Be sure to use EpsonNet Config included on the Software Disc shipped with this product.

Note for Mac OS 9 users:

EpsonNet Config on the Software Disc shipped with this product does not support Mac OS 9. To configure the network interface, use the previous version of the software (EpsonNet Config Ver.2). You can download EpsonNet Config Ver.2 from the Epson Web site.

http://support.epson.net/netconfig_down.html

System Requirements

The following table lists the system requirements of EpsonNet Config.

Operating systems	Mac OS 10.3.9 or higher Java 1.4 or later is installed
Models	PowerPC Macintosh/Intel Macintosh
Memory	150 MB or more
Hard disk drive space	50 MB

Installing EpsonNet Config

Follow the steps below to install EpsonNet Config to configure the network interface.

1. Make sure all the applications are closed, then insert the Software Disc in the CD-ROM drive.

EPSON folder opens automatically.

2. Select the Mac OS X icon in the **EPSON** folder, and then double-click it.
3. Click the **Install Network Utility** button.
4. Click the icon located next to EpsonNet Config Ver.3.
5. Follow the on-screen instructions to complete the installation.

Accessing the EpsonNet Config User's Guide

The EpsonNet Config User's Guide contains detailed information on EpsonNet Config. Follow the steps below to access the EpsonNet Config User's Guide.

1. Double-click the **Macintosh HD** icon.
2. In the **Applications** folder, double-click the **EpsonNet** folder, and then double-click the **EpsonNet Config V3** folder. Finally, double-click the **EpsonNet Config** icon.

EpsonNet Config starts.

3. From the Help menu, select **EpsonNet Config Help**.

The EpsonNet Config User's Guide appears. By clicking the links on the front page or contents page, you can get information on using EpsonNet Config.

EpsonNet Config with Web Browser

About EpsonNet Config

EpsonNet Config with Web Browser is a Web-based utility designed to configure the printer for use on a network.

By typing the IP address of the network interface for the URL in your browser, you can start EpsonNet Config to allow you to configure the network interface for TCP/IP, NetWare, MS Network, AppleTalk, IPP, and SNMP.

Supported Web browser

Windows:

- Microsoft Internet Explorer version 5.0 or later
- Netscape Navigator version 7.0 or later
- Firefox version 2.0 or later

Mac OS X:

- Netscape Navigator version 7.0 or later
- Apple Safari version 1.2 or later
- Firefox version 2.0 or later

About Web browser setting

When running EpsonNet Config with Web Browser, be sure not to use a proxy server to access the Internet. If the **Access the Internet using a proxy server** check box is selected, you cannot use EpsonNet Config with Web Browser. Use the following steps to clear the Access the Internet using a proxy server check box.

1. Right-click the **Internet Explorer** icon on the desktop, and then select **Properties**.
2. Click the **Connection** tab.
3. Clear the **Access the Internet using a proxy server** check box.

Configuring the Network Interface Using Web-Based EpsonNet Config

After you have assigned an IP address to the network interface using EpsonNet EasyInstall, EpsonNet Config for Windows or Macintosh, or the arp/ping command, you can configure the network interface using Web-based EpsonNet Config.

Note:

- A Web browser must be installed on your computer.

- ❑ *TCP/IP must be correctly set for the computer and the network interface.*
- ❑ *Do not run both EpsonNet Config for Windows or Macintosh and Web-based EpsonNet Config at the same time.*
- ❑ *Your browser may restrict some characters you can use. For details, see your browser or operating system documentation.*

Note for users of printers supporting NetWare queue-based printing:

*If you are using the dial-up environment without running NetWare, select **Disable** on the NetWare screen. If **Enable** is selected, the extra account may be charged when you are using the dial-up router.*

Follow the steps below to change the IP address using EpsonNet Config.

1. Turn on your printer.
2. Run EpsonNet Config using one of the following ways.
 - ❑ Run EpsonNet Config for Windows or Macintosh. Select the printer you want to configure from the list and then click **Launch Browser**.
 - ❑ Open your browser, and then type in the IP address of the network interface directly. Do not run EpsonNet Config for Windows or Macintosh.

http://IP address of network interface/

Example: **http://192.168.100.201/**

Note:

To check the IP address of the network interface, use EpsonNet Config. See “About EpsonNet Config” on page 82 for Windows users, or see “About EpsonNet Config” on page 84 for Macintosh users for details.

Note for users of printers supporting NetWare queue-based printing:

- ❑ *From any NetWare client, log in to the target NetWare server or NDS context with supervisor privileges.*
 - ❑ *You cannot create a print server, print queue, or printer with Web-based EpsonNet Config. You must create these objects before using Web-based EpsonNet Config.*
3. Click **TCP/IP** under Network on the Configuration menu to display the TCP/IP setting screen.

Note:

If you want to configure a protocol other than TCP/IP, configure the desired settings on Configuration - Network screen.

4. Select a method for acquiring the IP address. When you select **Auto**, DHCP becomes available and assigns an IP address automatically. If you want to set the IP address manually, select **Manual**.

Note:

- The network administrator must check any changes made to the IP address settings.
 - When **Auto** is selected, DHCP becomes available. To use the DHCP server, make sure it is installed on your computer and correctly configured. See your operating system's online help for detailed instructions.
 - If **Set Using Automatic Private IP Addressing (APIPA)** is enabled, a private IP address is automatically assigned to the network interface even when there are no DHCP servers on your system or your network.
 - If the Dynamic DNS function is not supported, we recommend that you select **Manual** and then enter an IP address. This is because if you select **Auto**, the IP address of the network interface changes every time you turn on the printer so that you need to change the printer port setting accordingly.
5. To assign an IP address manually, enter the IP address, the subnet mask, and the default gateway. Be sure the IP address does not conflict with any other devices on the network.

Note:

If there is a server or a router functioning as a gateway, enter the IP address of the server or the router for the gateway address. If there is no gateway, leave the default values there.

6. If you want to get a private address between 169.254.1.1 and 169.254.254.254 automatically when an IP address cannot be obtained by the DHCP server, leave it at **Enable** for **Set Using Automatic Private IP Addressing (APIPA)**; otherwise, select **Disable**.
7. When setting an IP address using the ping command, select **Enable** for **Set Using PING**. Select **Disable** when setting an IP address with EpsonNet Config; this prevents any unexpected change of the IP address.
8. Select **Enable** for **Acquire DNS Server Address Automatically** if you want to acquire the DNS server address using the DHCP server.

If you want to enter the DNS server address manually, select **Disable** and then enter the IP address of the DNS server.

9. Select **Enable** for **Acquire Host Name and Domain Name Automatically** if you want to acquire the host name and the domain name using the DHCP server.

If you want to specify manually, enter the host name and the domain name in the text boxes.

10. Select **Enable** for **Register Network Interface Address to DNS Server** if you want to register the host name and domain name to the DNS server through the DHCP server that supports Dynamic DNS.

If you want to register the host name and the domain name directly to the DNS server, select **Enable** for **Register Network Interface Address Directly to DNS Server**.

11. Select **Enable** or **Disable** for **Use Universal Plug and Play**. Select **Enable** if you want to use the Universal Plug and Play function on Windows Me or future operating systems.
12. Change the default Universal Plug and Play device name, if desired. This device name is used for Windows that supports the Universal Plug and Play function.
13. Mac OS X only:
Select **Enable** or **Disable** for **Use Bonjour**. If you select **Enable**, enter the Bonjour Name and the Bonjour Printer Name. If your network environment supports DHCP, you can use the printer on the network just by enabling this setting.
14. Click **Submit** and then enter the password to update the settings.

Note:

If you have set the Administrator Name on the Administrator screen, enter the administrator name for the user name.

15. If the message “Configuration change is complete!” appears on your screen, the update is complete. Do not exit the Web browser and do not send a job to the printer until this message appears. Follow the on-screen instructions to reset the printer.

Note:

- Since the new IP address becomes available after the printer is reset, you need to restart EpsonNet Config by entering the new IP address.*
- Only changes on the page where you press the **Submit** button take effect.*

Opening Screen

Any user can access the following screen by typing the IP address of the network interface for the URL in your browser.

Note:

- ❑ *The item appears only if your printer supports the function, and the name of the item may vary depending on the model.*
- ❑ *See the EpsonNet Config with Web Browser help for details about each item.*

Index

Home	Links to the opening screen.
Favorite	Links to a Web site previously defined by the administrator.
Help	Links to Help.
About	Links to the copyright and version information for EpsonNet Config.
EPSON Logo	Links to the Epson Web site (http://www.epson.com).

Menu

Information - Printer	
Device	Displays the printer device information.
Consumables	Displays the consumables information.
Confirmation	Confirms and executes the Information Sheet, Reserve Job, and Form Overlay.
Input	Displays the paper type information.
Print	Displays the print information.
Emulation	Displays the information for each type of emulation.
Interface	Displays the printer interface information.
Information - Network	
General	Displays the network interface information.
NetWare	Displays information about NetWare.
TCP/IP	Displays information about TCP/IP.

AppleTalk	Displays information about AppleTalk.
MS Network	Displays information about Microsoft Network.
IPP	Displays information about IPP.
SNMP	Displays information about SNMP.
Access Control	Displays information about Access Control.
Timeout	Displays information about Timeout.
Time	Displays information about Time.
EDM	Displays the EDM Agent information.
Configuration - Printer*	
Input	Change the input settings.
Print	Change the print settings.
Emulation	Change the emulation settings.
Interface	Change the printer interface settings.
Configuration - Network	
NetWare	Configure the applicable settings for NetWare.
TCP/IP	Configure the desired settings/method for TCP/IP.
AppleTalk	Configure the desired settings for AppleTalk.
MS Network	Configure the desired settings for Microsoft Network.
IPP	Configure the desired settings for IPP.
SNMP	Configure the desired settings for SNMP.
Access Control	Configure the desired settings for Access Control.
Timeout	Configure the desired settings for Timeout.
Time	Configure the desired settings for Time.
Configuration - Security Screens*	
Port Control	Select either Enable or Disable for each of the LPR, RAW, FTP, and IPP ports.
SSL/TLS Communication Settings	Configure the desired settings for SSL/TLS communication.

CA Certificate	Import or delete CA certificates.
Server Certificate	Manage server certificates.
Configuration - Optional	
Administrator	Type the name of the administrator and a link to a favorite Web site.
Reset	Resets the printer and returns to the default settings.
Password	Set the password to protect settings.

* Large format inkjet printers do not support this function.

EpsonNet Print

About EpsonNet Print

EpsonNet Print is a utility program that provides peer to peer printing to Epson printers on the TCP/IP network.

By using EpsonNet Print, you can find a printer located in the same segment or beyond a router. You can select LPR standard printing, LPR enhanced printing, or High-speed printing.

System Requirements

The following table lists the system requirements of EpsonNet Print.

Operating systems	Windows 7 Windows Vista (with Service Pack 2 or higher) Windows XP Home Edition/Professional (with Service Pack 3 or higher) Windows Me, 98, 98 Second Edition Windows 95 OSR2 (with Internet Explorer version 5.0 or higher) Windows Server 2008 (with Service Pack 2 or higher) Windows Server 2008 R2 Windows Server 2003 (with Service Pack 2 or higher) Windows 2000 (with Service Pack 4 or higher) Windows NT 4.0 (with Service Pack 6 or higher)
-------------------	---

CPU	Pentium II 400 MHz or better recommended
Memory	64 MB or more
Hard disk space	20 MB or more
Display	800 × 600 screen resolution, 256 color or more

Installing EpsonNet Print

Follow the steps below to install EpsonNet Print. Be sure to install it on a computer connected to the network.

1. Make sure all the applications are closed, then insert the Software Disc into the CD-ROM drive.
2. The Epson Install Navi screen opens automatically.

If the Epson Install Navi screen does not appear, double-click **EPSETUP.EXE** on the CD-ROM.

3. Click the **Software List** icon.
4. Select **EpsonNet Print** and then click the **Next** button.
5. Follow the on-screen instructions to complete the installation.

Your computer is now set up to print using LPR via EpsonNet Print. See the next section to set up your printer.

For Windows 7/Vista/XP/Server 2008/Server 2003/2000/NT 4.0 Users

Follow the steps below to add a port using the Add Printer Wizard.

- If you want to add a port for a printer with its IP address assigned automatically by the DHCP server or router, see “Adding a port for a printer assigned with a dynamic IP address” on page 94.
- If you want to add a port for a printer with its IP address assigned manually, see “Adding a port for a printer assigned with a static IP address” on page 97.

Note:

- Be sure that the computer is connected to the network and TCP/IP is correctly set.

- ❑ A valid IP address must be assigned to the printer.

Adding a port for a printer assigned with a dynamic IP address

1. **For Windows 7/Vista/Server 2008:** Click **Start, Control Panel**, and then **View devices and printers** (Windows 7), or **Printers** (Windows Vista/Server 2008). Click **Add a printer** to start the Add Printer Wizard.

For Windows XP: Click **Start** and then **Printers and Faxes**. Under Printer Tasks, click **Add a printer** to start the Add Printer Wizard. Click **Next**.

For Windows Server 2003: Click **Start** and then **Printers and Faxes**. Double-click **Add Printer** in the Printers folder to start the Add Printer Wizard. Click **Next**.

For Windows 2000: Click **Start**, point to **Settings**, and then select **Printers**. Double-click **Add Printer** in the Printers folder to start the Add Printer Wizard. Click **Next**.

For Windows NT 4.0: Click **Start**, point to **Settings**, and then select **Printers**. Double-click the **Add Printers** icon. Click **Next**.

2. **For Windows 7/Vista/Server 2008:** Click **Add a local printer**. Select the **Create a new port** radio button, and then select **EpsonNet Print Port** from the list. Click **Next**.

Note:

*If the Windows Security Alert screen appears, click the **Allow access** or **Unblock** button, and then click the **Search Again** button to search the printers.*

For Windows XP/Server 2003: Click **Local printer attached to this computer**, clear the **Automatically detect and install my Plug and Play printer** check box, and then click **Next**. Select the **Create a new port** radio button, and then select **EpsonNet Print Port** from the list. Click **Next**.

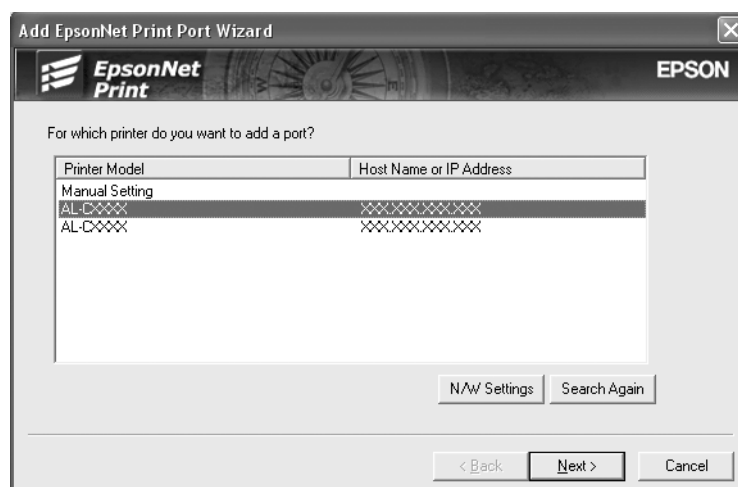
Note:

*If the Windows Security Alert screen appears, click the **Unblock** button, and then click the **Search Again** button to search the printers.*

For Windows 2000: Click **Local printer**, clear the **Automatically detect and install my Plug and Play printer** check box, and then click **Next**. Select the **Create a new port** radio button, and then select **EpsonNet Print Port** from the list. Click **Next**.

For Windows NT 4.0: Select the **My Computer** radio button, and then click **Next**. Click the **Add Port** button in the Add Printer Wizard dialog box. Select **EpsonNet Print Port** from the Available Printer Port list, and then click the **New Port** button.

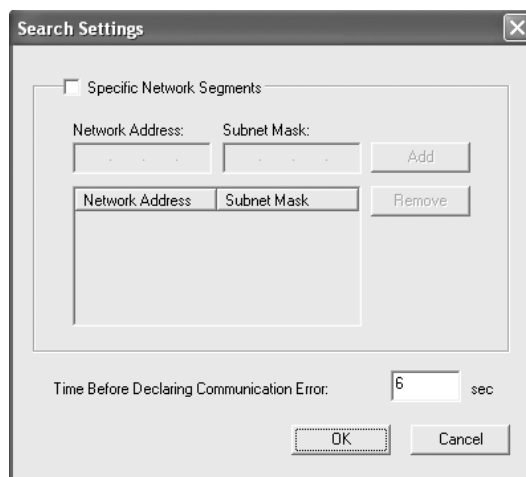
3. Select the target printer, and then click **Next**.



Note:

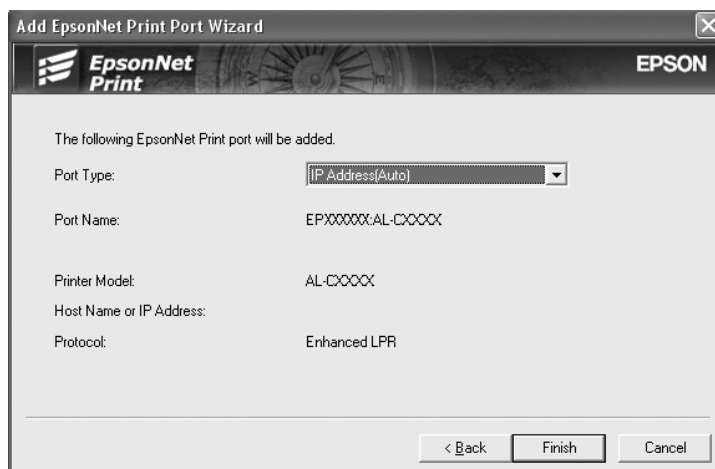
- ❑ If the target printer is not in the list, click the **Search Again** button to search the printers using new parameters.
- ❑ Each column can be sorted in ascending or descending order by clicking the column header. However, **Manual Setting** is always displayed on the top of the list regardless of sorting.

- ❑ If you want to search printers in other segments, click the **N/W Settings** button. Select the **Specific Network Segments** check box, and then enter the network address and subnet mask of the network segment for the search. Then click the **Add** button. You can also specify the time before declaring communication error.



The screenshot shows the "Search Settings" dialog box. It features a checkbox labeled "Specific Network Segments". Below this checkbox is a table with two columns: "Network Address" and "Subnet Mask". There are two rows in the table, each with an "Add" button to its right. Below the table is a "Remove" button. At the bottom of the dialog, there is a label "Time Before Declaring Communication Error:" followed by a text input field containing the number "6" and the unit "sec". At the very bottom are "OK" and "Cancel" buttons.

4. Confirm the information about the printer's port you want to configure, and then click **Finish**.



The screenshot shows the "Add EpsonNet Print Port Wizard" dialog box. It has the EpsonNet Print logo and the EPSON logo. The text "The following EpsonNet Print port will be added." is displayed. Below this, there are several fields: "Port Type:" with a dropdown menu showing "IP Address(Auto)"; "Port Name:" with the text "EPXXXXXX:AL:CXXXX"; "Printer Model:" with the text "AL:CXXXX"; "Host Name or IP Address:" which is empty; and "Protocol:" with the text "Enhanced LPR". At the bottom, there are three buttons: "< Back", "Finish", and "Cancel".

Items	Explanations
Port Type	<p>The following items are listed in the pull-down menu, and you can select the port type you need.</p> <p>IP Address (Auto): Configure the port automatically. If the IP address of the printer is acquired automatically and the computer and the printer are in the same segment, you can select this port type.</p> <p>IP Address (Manual): Use the printer's IP Address for the port name.</p> <p>HostName (DNS): Use the printer's host name registered in the DNS server for the port name.</p> <p>MS Network: Use the NetBIOS name registered in the printer for the port name.</p>
The port Information	<p>The following items are displayed:</p> <ul style="list-style-type: none"> - Port Name (If the port type is changed, the port name and the host name or IP address are also changed.) - Printer Model - Host Name or IP Address - Protocol
Finish button	Register the port information to the system and close the Add EpsonNet Print Port Wizard.
Back button	Go back to the printer list window.
Cancel button	Close the Add EpsonNet Print Port Wizard.

The new printer port is created in your computer. To install the printer driver, see "Installing the Printer Driver" on page 100.

Adding a port for a printer assigned with a static IP address

1. **For Windows 7/Vista/Server 2008:** Click **Start, Control Panel**, and then **View devices and printers** (Windows 7), or **Printers** (Windows Vista/Server 2008). Click **Add a printer** to start the Add Printer Wizard.

For Windows XP: Click **Start** and then **Printers and Faxes**. Under Printer Tasks, click **Add a printer** to start the Add Printer Wizard. Click **Next**.

For Windows Server 2003: Click **Start** and then **Printers and Faxes**. Double-click **Add Printer** in the Printers folder to start the Add Printer Wizard. Click **Next**.

For Windows 2000: Click **Start**, point to **Settings**, and then select **Printers**. Double-click **Add Printer** in the Printers folder to start the Add Printer Wizard. Click **Next**.

For Windows NT 4.0: Click **Start**, point to **Settings**, and then select **Printers**. Double-click the **Add Printers** icon. Click **Next**.

2. **For Windows 7/Vista/Server 2008:** Click **Add a local printer**. Select the **Create a new port** radio button, and then select **EpsonNet Print Port** from the list. Click **Next**.

Note:

*If the Windows Security Alert screen appears, click the **Allow access** or **Unblock** button, and then click the **Search Again** button to search the printers.*

For Windows XP/Server 2003: Click **Local printer attached to this computer**, clear the **Automatically detect and install my Plug and Play printer** check box, and then click **Next**. Select the **Create a new port** radio button, and then select **EpsonNet Print Port** from the list. Click **Next**.

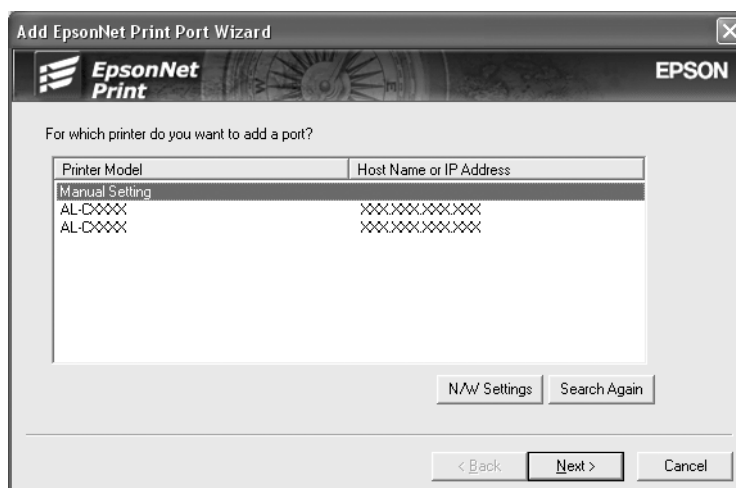
Note:

*If the Windows Security Alert screen appears, click the **Unblock** button, and then click the **Search Again** button to search the printers.*

For Windows 2000: Click **Local printer**, clear the **Automatically detect and install my Plug and Play printer** check box, and then click **Next**. Select the **Create a new port** radio button, and then select **EpsonNet Print Port** from the list. Click **Next**.

For Windows NT 4.0: Select the **My Computer** radio button, and then click **Next**. Click the **Add Port** button in the Add Printer wizard dialog box. Select **EpsonNet Print Port** from the Available Printer Port list, and then click the **New Port** button.

3. Select **Manual Setting** from the list, and then click **Next**.



4. Enter the printer's name and the port name is automatically entered to the Port Name edit box. Then click **Next**.

5. Confirm the information about the printer's port you want to configure, and then click **Finish**.

Items	Explanations
The port Information	The following items are displayed: <ul style="list-style-type: none"> - Port Name - Host Name or IP Address - Protocol
Finish button	Register the port information to the system and close the Add EpsonNet Print Port Wizard.
Back button	Go back to the printer list window.

Items	Explanations
Cancel button	Close the Add EpsonNet Print Port Wizard.

The new printer port is created in your computer. To install the printer driver, see “Installing the Printer Driver” on page 100.

Installing the Printer Driver

Install the printer driver that comes with your printer.

Note:

Some buttons in these steps may be slightly different depending on your operating system.

1. Insert the Software Disc shipped with the printer.
2. Close the Epson Install Navi screen if it appears.
3. On the Add Printer screen, click the **Have Disk** button. The Install From Disk dialog box appears.
4. Click **Browse**.
5. Select the CD-ROM drive for Drives, and double-click the appropriate folder for your operating system. Click **OK**.
6. Click **OK** in the Install From Disk dialog box.
7. Select the model name of the printer, and then click **Next**.

Note:

*If the Add Printer Wizard asks you to select either **Keep existing driver** or **Replace existing driver**, be sure to select the **Replace existing driver** radio button. Click **Next**.*

8. Click **Finish** and follow the on-screen instructions to complete the setup.

The printer is now ready for peer-to-peer printing. To configure the printer port, see “Configuring the Printer Port” on page 105.

For Windows Me/98/95 Users

Follow the steps below to add a port using the Add Printer Wizard.

- ❑ If you want to add a port for the printer with its IP address assigned automatically from the DHCP server or router, see “Adding a port for a printer assigned with a dynamic IP address” on page 101.
- ❑ If you want to add a port for the printer with its IP address assigned manually, see “Adding a port for a printer assigned with a static IP address” on page 103.

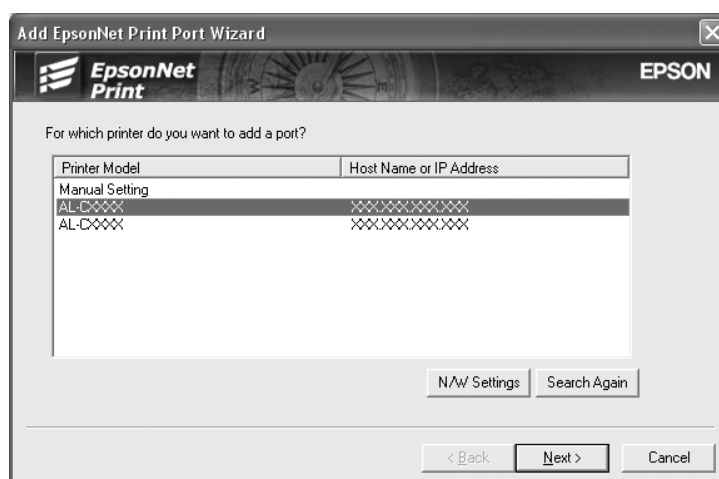
Note:

- ❑ *Be sure that the computer is connected to the network and TCP/IP is correctly set.*
- ❑ *Be sure that the target Epson printer driver is installed on the computer.*
- ❑ *A valid IP address must be assigned to the printer.*

Adding a port for a printer assigned with a dynamic IP address

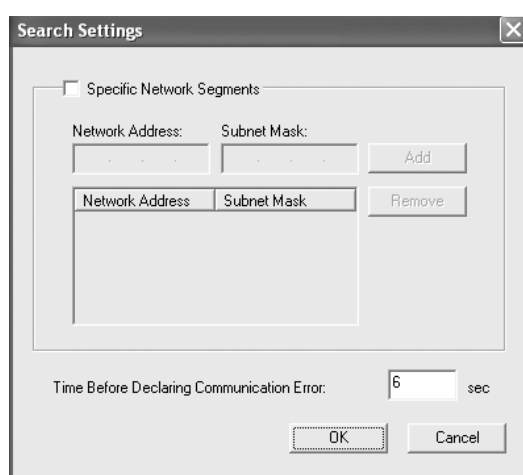
Install the printer driver before adding a port for the printer. See the manual shipped with your printer for instructions on how to install the printer driver.

1. Click **Start**, point to **Settings**, and then select **Printers**.
2. Right-click the target printer icon, and then select **Properties**.
3. Click the **Details** tab, and then click the **Add Port** button. Select the **Other** radio button, and then select **EpsonNet Print Port**. Click **OK**.
4. Select the target printer, and then click **Next**.

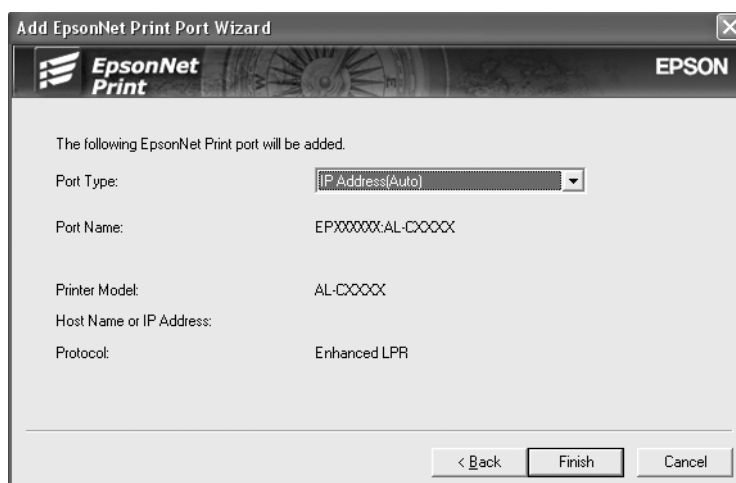


Note:

- ❑ If the target printer is not in the list, click the **Search Again** button to search the printers using new parameters.
- ❑ Each column can be sorted in ascending or descending order by clicking the column header. However, **Manual Setting** is always displayed on the top of the list regardless of sorting.
- ❑ If you want to search printers in other segments, click the **N/W Settings** button. Select the **Specific Network Segments** check box, and then enter the network address and subnet mask of the network segment for the search. Then click the **Add** button. You can also specify the time before declaring communication error.



5. Confirm the information about the printer's port you want to configure, and then click **Finish**.



Items	Explanations
Port Type	<p>The following items are listed in the pull-down menu, and you can select the port type you need.</p> <p>IP Address (Auto): Configure the port automatically. If the IP address of the printer is acquired automatically and the computer and the printer are in the same segment, you can select this port type.</p> <p>IP Address (Manual): Use the printer's IP Address for the port name.</p> <p>HostName (DNS): Use the printer's host name registered in the DNS server for the port name.</p> <p>MS Network: Use the NetBIOS name registered in the printer for the port name.</p>
The port Information	<p>The following items are displayed:</p> <ul style="list-style-type: none"> - Port Name (If the port type is changed, the port name and the host name or IP address are also changed.) - Printer Model - Host Name or IP Address - Protocol
Finish button	Register the port information to the system and close the Add EpsonNet Print Port Wizard.
Back button	Go back to the printer list window.
Cancel button	Close the Add EpsonNet Print Port Wizard.

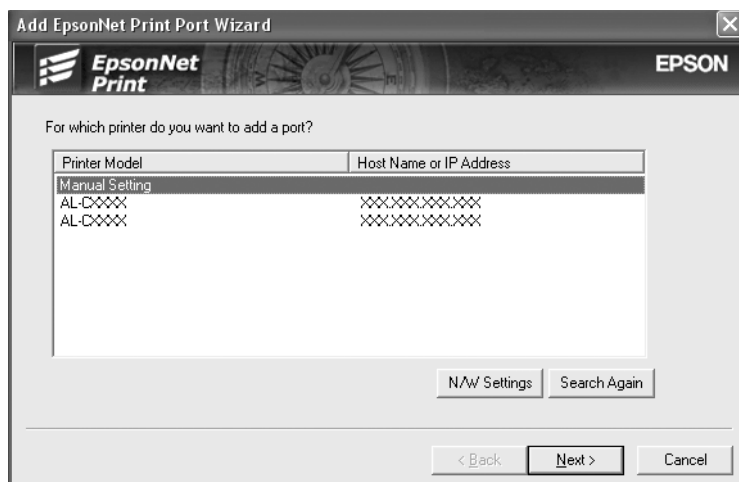
The printer is now ready for peer-to-peer printing. To configure the printer port, see “Configuring the Printer Port” on page 105.

Adding a port for a printer assigned with a static IP address

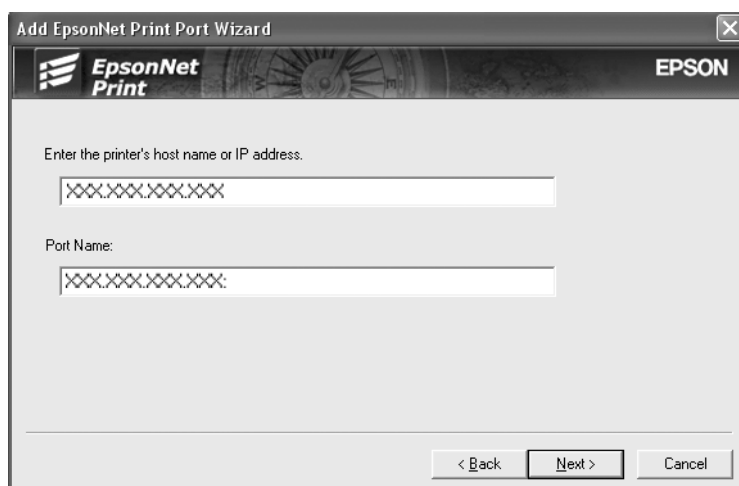
Install the printer driver before adding a port for the printer. See the manual shipped with your printer for instructions on how to install the printer driver.

1. Click **Start**, point to **Settings**, and then select **Printers**.
2. Right-click the target printer icon, and then select **Properties**.
3. Click the **Details** tab, and then click the **Add Port** button. Select the **Other** radio button, and then select **EpsonNet Print Port**. Click **OK**.

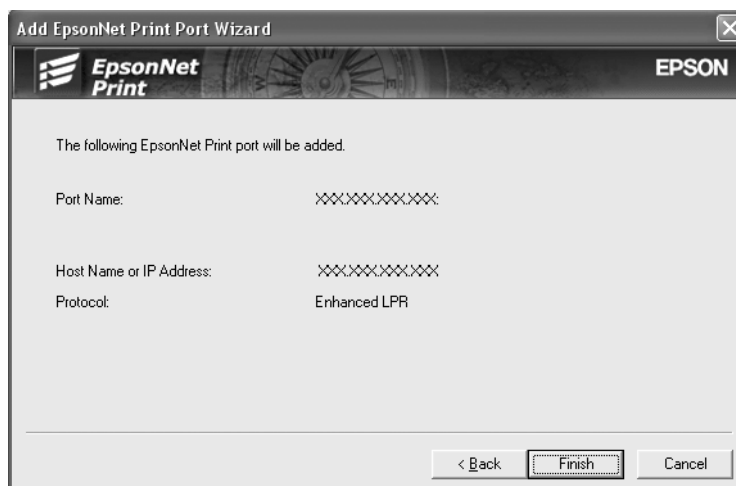
4. Select **Manual Setting** from the list, and then click **Next**.



5. Enter the printer's name and the port name is automatically entered to the Port Name edit box. Then click **Next**.



6. Confirm the information about the printer's port you want to configure, and then click **Finish**.



Items	Explanations
The port Information	The following items are displayed: - Port Name - Host Name or IP Address - Protocol
Finish button	Register the port information to the system and close the Add EpsonNet Print Port Wizard.
Back button	Go back to the printer list window.
Cancel button	Close the Add EpsonNet Print Port Wizard.

The printer is now ready for peer-to-peer printing. To configure the printer port, see “Configuring the Printer Port” on page 105.

Configuring the Printer Port

Follow the steps below to configure the printer port. The printing speed differs depending on your selection.

1. For Windows 7/Vista/Server 2008:

Click **Start, Control Panel**, and then **View devices and printers** (Windows 7) or **Printers** (Windows Vista/Server 2008).

For Windows XP/Server 2003:

Click **Start** and then **Printers and Faxes**.

For Windows Me/98/95/2000/NT 4.0:

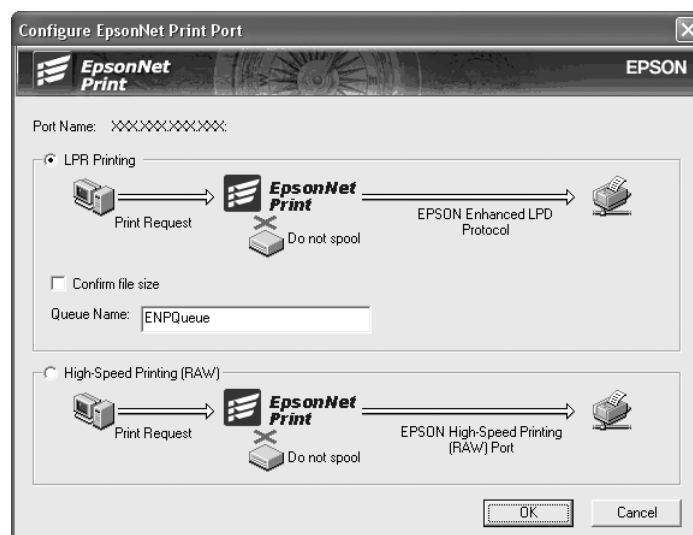
Click **Start**, point to **Settings**, and then select **Printers**.

2. Right-click the target printer, and then click **Properties**.
3. **For Windows Vista/XP/Server 2008/Server 2003/2000/NT 4.0:**
Click the **Ports** tab, and then click the **Configure Port** button.

For Windows Me/98/95:

Click the **Details** tab, and then click the **Port Settings** button.

4. Make the appropriate settings for the desired port.

**LPR enhanced printing:**

Select the **LPR Printing** radio button, and then specify the queue name (up to 32 characters). LPR enhanced printing sends a print job to the target network printer without spooling all of the print data. LPR enhanced printing is faster than LPR standard printing.

LPR standard printing:

Select the **Confirm file size** check box, and then specify the queue name (up to 32 characters). Print data is spooled by the computer before being sent to the target network printer.

Note:

When the print data size is 20 MB or more, we recommend that you use LPR enhanced printing.

High-speed printing:

Select the **High-Speed Printing (RAW)** radio button. The Epson high-speed printing port sends a print job to the target network printer without spooling all of the print data. High-Speed printing is faster than the other two printing methods.

5. Click **OK**.

If you select the **High-Speed Printing (RAW)** radio button and if the printer does not support High-Speed printing, or if you fail to connect to the printer, an error message appears. Follow the message to remedy the problem.

Chapter 4

Troubleshooting

General Problems

Cannot configure the network interface or cannot print from the network.

Cause	What to do
The printer settings or network settings may be wrong.	First, check to see if you can print a status sheet, as described in "Printing a Network Status Sheet" on page 113. If you can print a status sheet, check the network settings; otherwise, set the interface mode of the printer's control panel to Auto or Option .

Cannot print even if you have assigned the IP address to the computer and the printer.

Cause	What to do
You have assigned an IP address to the computer manually, but you assigned the IP address to the printer by Automatic Private IP Addressing (APIPA).	Assign the printer's IP address so that it belongs to the same segment of the computer. Use EpsonNet Config and the printer's control panel.

Unable to start EpsonNet Config.

Cause	What to do
You have added or deleted protocols after installing EpsonNet Config.	Uninstall EpsonNet Config and then reinstall it. See "Uninstalling Software" on page 122 and "Installing EpsonNet Config" on page 83.

The message “EpsonNet Config cannot be used because no network is installed.” appears when you start EpsonNet Config.

Cause	What to do
Both TCP/IP and IPX/SPX are not installed on the computer.	Install the TCP/IP or IPX/SPX protocol.
TCP/IP is installed on the computer, but its IP address is not set correctly.	Set a correct IP address for the computer.

The message “Could not complete communicating configuration data” appears when you send settings to the network interface.

Cause	What to do
This may happen when using a dial-up router.	Run Command Prompt from the computer on which EpsonNet Config is installed, and then enter the following command: Format: >ROUTE_ADD_the IP address of the network interface_ the IP address of the computer (the under bar represents one space) Example: >ROUTE ADD 192.168.192.168 22.33.44.55.

Unable to start EpsonNet Config with Web Browser.

Cause	What to do
You have not set the IP address for the network interface.	Set the IP address for the network interface using EpsonNet Config for Windows or Macintosh, the printer’s control panel. You can check the IP address on a status sheet. See the EpsonNet Config User’s Guide.

The Model Name and IP Address do not appear in the EpsonNet Config dialog box.

Cause	What to do
If the valid IP address is not set, the items indicated in the dialog box mentioned above may not appear.	<p>Set a valid IP address.</p> <p>Refresh the status by selecting Refresh from the View menu.</p> <p>Increase the length of time before a timeout. To do this, select Options from the Tool menu, and then select Timeout. Note that doing so can cause EpsonNet Config to run more slowly.</p>

An extra account is generated when using the dial-up network.

Cause	What to do
NetWare is set to Enable even though you are not using NetWare.	Set NetWare to Disable on the NetWare screen of EpsonNet Config with Web Browser.
<p>How to acquire an IP address. To acquire your IP address, you need to apply to the NIC (Network Information Center) in your country.</p>	

Problems Specific to Your Network Environment

Windows Me/98 environment

A dial-up connection dialog box appears when printing with TCP/IP via EpsonNet Print.

Cause	What to do
You have selected a phone line or modem (for Internet Explorer 4.0x) for the Internet connection.	Printing ends normally after you cancel this dialog box, but the message appears every time you print. Connect to the Internet using a local area network or start a dial-up network manually.

A communication error message appears when you start printing or when you open the printer's properties.

Cause	What to do
When you print with NetBEUI or IPP, EPSON Status Monitor cannot be used.	Open the printer's properties and then click the Optional Settings tab. Select the Update the Printer Option Information manually radio button. Open the printer's properties, click the Optional Settings tab, and then click the Notice Settings button. Clear the Monitor the Printing Status check box.

Windows 2000/NT environment

A dial-up connection dialog box appears when printing with TCP/IP via EpsonNet Print.

Cause	What to do
You have selected a phone line or modem (for Internet Explorer 4.0x) for the Internet connection.	Printing ends normally after you cancel this dialog box, but the message appears every time you print. Connect to the Internet using a local area network or start a dial-up network manually.

A communication error message appears when you start printing or when you open the printer's properties.

Cause	What to do
When you print with NetBEUI or IPP, EPSON Status Monitor cannot be used.	Open the printer's properties and then click the Optional Settings tab. Select the Update the Printer Option Information manually radio button. Open the printer's properties, click the Optional Settings tab, and then click the Notice Settings button. Clear the Monitor the Printing Status check box.

No clients except an administrator can print via Windows NT Server 4.0.

Cause	What to do
CREATOR OWNER has been deleted from the Printer Permissions list, or CREATOR OWNER is set to Print or No Access .	Add CREATOR OWNER by clicking the Add button in the Printer Permissions dialog box, or set CREATOR OWNER to Manage Documents (default setting).

Macintosh environment

Printers do not appear in Chooser.

Cause	What to do
You may have selected a wrong one for "Connect via" in the AppleTalk Control Panel.	Make sure to select Ethernet in AppleTalk Control Panel, and make sure AppleTalk is active in Chooser. Also, check the network equipment including the hub cable.

The Bonjour/Rendezvous printer setting is overwritten by the AppleTalk printer setting.

Cause	What to do
The same printer is set up with AppleTalk after the printer is set up with Bonjour/Rendezvous.	Change the AppleTalk printer name so that it does not conflict with the Bonjour/Rendezvous printer name.

NetWare environment

For users of printers supporting NetWare queue-based printing

Nothing prints even though clients have sent data to the printer.

Cause	What to do
Clients may not be registered, or the network interface may not be logged in to the NetWare server.	Make sure clients are registered as users of the print queue and the print server. Also, make sure the network interface is logged in to the NetWare server.

EpsonNet Config will not start correctly.

Cause	What to do
Microsoft NetWare Directory Service is installed on your computer.	If you are using the NDS service, install the Novell NetWare Client service.

It takes a long time to start EpsonNet Config.

Cause	What to do
The Novell Client service is installed.	Double-click Network in Control Panel, and then double-click the network adapter that does not use the IPX/SPX-compatible protocol. Clear the items related to IPX to unbind IPX.

The printers on the IPX network do not appear in the EpsonNet Config dialog box.

Cause	What to do
The printer is turned off.	Turn on the printer.
The printer is not in the same segment as the computer where you installed EpsonNet Config.	To search for network interfaces in other segments, use Search options of EpsonNet Config.
You have not logged in to the target NetWare server with supervisor privileges.	From the computer on which EpsonNet Config is installed, log in to the target NetWare server with supervisor privileges.

Cannot monitor the printer using EPSON Status Monitor.

Cause	What to do
You set the NDS Print Server settings for the printer using EpsonNet Config for Windows.	Re-configure the printer assigned as the print server using NetWare Administrator.

For users of printers not supporting NetWare queue-based printing

Nothing prints even though clients have sent data to the printer.

Cause	What to do
Clients may not be registered, or the network interface may not be working correctly.	Make sure clients are registered as users of the NetWare server. Also, make sure the network interface is working correctly.

Printing a Network Status Sheet

Before you start configuring the network interface, be sure to print a network status sheet that contains important information such as the current configuration and the MAC address of the network interface.

To print a network status sheet, follow the steps below.

Note:

You cannot print a status sheet using the steps below if your printer does not have an LCD panel. See the User's Guide on how to print the status sheet.

1. Press the **Enter** button on the printer's control panel once to enter the SelecType mode. The LCD panel displays Information Menu.
2. Press the **Enter** button.
3. Press the **Down** button until Network Status Sheet appears on the LCD panel.
4. Finally, press the **Enter** button to print a network status sheet.

Note:

- You cannot print a status sheet in the following cases: the printer has started printing, it is offline, or it is not ready to print.
- See the User's Guide for more information on the printer's control panel.

Printing a Network Status Sheet (Large Format Inkjet Printers)

Before you start configuring the network interface, be sure to print a network status sheet that contains important information such as the current configuration and the MAC address of the network interface.

To print a network status sheet, follow the steps below.

Note:

You cannot print a status sheet using the steps below if your printer does not have an LCD panel. See the User's Guide on how to print the status sheet.

1. Press the **Right** button on the printer's control panel once to enter the Menu mode.
2. Press the **Up** or **Down** button until TEST PRINT appears. Then press the **Enter** button.
3. Press the **Down** button until NETWORK STATUS SHEET appears on the LCD panel. Then press the **Enter** button.
4. Finally, press the **Enter** button to print a network status sheet.

Note:

- You cannot print a status sheet in the following cases: the printer has started printing, it is offline, or it is not ready to print.
- See the User's Guide for more information on the printer's control panel.

Initializing Your Printer

To initialize your printer, turn on the printer while pressing the **Cancel Job** button on the printer's control panel.

Note:

Some printer models do not support this function.

**Caution:**

Note that all changes made to the printer and network settings are cleared when you initialize the printer using this method. Therefore, do not initialize your printer except in the case you forget the EpsonNet Config password.

Reformatting the Hard Disk Drive

To reformat the Hard Disk Drive, follow the instructions below.

Note:

Some printer models do not support this function.

1. Make sure the printer is turned off.
2. Hold down the **Down** button while you turn on the printer.
3. When you see the message **SUPPORT Mode** on the LCD panel, select **HDD Format** in the support menu.

Note:

- After reformatting the Hard Disk Drive, the printer will automatically reboot.
- When you want to erase only the fonts installed from the Adobe PostScript 3 (PS3), follow steps 1 through 3 above. Select **PS3 HDD Init** when the Adobe PostScript 3 ROM is installed.
- When installing a Hard Disk Drive from a different printer, reformat it with this function.

Chapter 5

Tips for Administrator

Setting an IP Address on the Printer's Control Panel

After connecting the printer to the network, you need to set the IP address for the network interface.

To set the IP address, subnet mask, and default gateway from the control panel, follow the steps below.

Note:

If you are using a printer model that does not have an LCD panel, you cannot use the steps below.

1. Turn on your printer.
2. Press the **Enter** button on the printer's control panel once to enter the SelecType mode. The LCD panel displays Information Menu.
3. Press the **Up** or **Down** button until Network Menu appears. Then press the **Enter** button.
4. Check that Network I/F = On appears.

If Network I/F = Off appears instead, press the **Enter** button and then the **Up** or **Down** button to change to Network I/F = On. Then press the **Enter** button, turn off the printer for more than five seconds, and turn it back on.

5. Press the **Up** or **Down** button until Get IP Address = Auto appears. Press the **Enter** button and then the **Up** or **Down** button to change to Get IP Address = Panel. Then press the **Enter** button. You can use the following methods to get an IP address.
 - Choose Panel when setting the IP address, subnet mask, and default gateway using the printer's control panel.
 - Choose Auto when getting the IP address from a DHCP server. The IP address is automatically obtained from the DHCP server whenever the printer is reset or turned on.
 - Choose PING when setting the IP address using the arp/ping command. The network interface uses the IP address set by the arp/ping command. The settings become available when the printer is reset or turned off and then back on.

Note:

- To use **Auto**, a DHCP server must be correctly configured on the network. See the online help of your operating system for detailed instructions.
- Choose **PING** only when setting the IP address using the *arp/ping* command.

6. Press the **Up** or **Down** button until IP = xxx.xxx.xxx.xxx appears. Press the **Enter** button.
7. Press the **Up** or **Down** button until the desired value appears. Then press the **Enter** button to set the value.

Note:

Repeat steps 7 and 8 to set the IP address, subnet mask, and default gateway.

8. Press the **Start** button to exit the control panel menus.
9. Turn off your printer and then turn it back on. Be sure to wait until the initialization is complete.

Print a network status sheet to confirm the new IP address.

Note:

- You must first set the IP address before using EpsonNet Config with Web Browser.
- See the User's Guide for more information about settings on the printer's control panel.

Network Menu

These items are used to make network settings on the printer's control panel.

Item	Settings
Network I/F	On, Off
Get IPAddress	Panel, Auto, PING
IP	0.0.0.1 to 255.255.255.254
SM	0.0.0.0 to 255.255.255.255
GW	0.0.0.0 to 255.255.255.255
NetWare	On, Off
AppleTalk	On, Off

Item	Settings
MS Network	On, Off
WSD	On, Off
LLTD	On, Off
Bonjour	On, Off
Link Speed	Auto, 100 Full, 100 Half, 10 Full, 10 Half
Buffer Size	Normal, Maximum, Minimum

Note:

- To activate the Network Menu settings, you must turn off the printer for more than five seconds and then turn it back on. Or, you can perform a Reset All operation, as explained in “Reset Menu” in the User’s Guide.
- Resetting the printer erases all print jobs. Make sure the Ready light is not flashing when you reset the printer.

AUX Menu

This menu allows you to control the optional interface settings from the printer’s control panel.

Note:

The AUX Menu appears only when an optional interface is installed.

Item	Settings
AUX I/F	On, Off
Get IPAddress*	Panel, Auto, PING
IP*	0.0.0.0 to 255.255.255.254
SM*	0.0.0.0 to 255.255.255.255
GW*	0.0.0.0 to 255.255.255.255
NetWare*	On, Off
AppleTalk*	On, Off
MS Network*	On, Off
Bonjour*	On, Off

Item	Settings
AUX Init*	-
Buffer Size*	Normal, Maximum, Minimum

* Available only when `On` is selected as the AUX I/F setting.

AUX I/F

Allows you to activate or deactivate the AUX interface when an optional interface card is installed.

Buffer Size

Determines the amount of memory to be used for receiving data and printing data. If `Maximum` is selected, more memory is allocated for receiving data. If `Minimum` is selected, more memory is allocated for printing data.

Note:

- To activate Buffer Size settings, you must turn off the printer for more than five seconds then turn it back on. Or, you can perform a Reset All operation, as explained in “Reset Menu” in the User’s Guide.*
- Resetting the printer erases all print jobs. Make sure the Ready light is not flashing when you reset the printer.*

Setting an IP Address on the Printer’s Control Panel (Large Format Inkjet Printers)

After connecting the printer to the network, you need to set the IP address for the network interface.

To set the IP address, subnet mask, and default gateway from the control panel, follow the steps below.

1. Turn on your printer.
2. Press the **Right** button on the printer’s control panel once to display `MENU`.
3. Press the **Down** button until `NETWORK SETUP` appears. Then press the **Right** button.
4. Select `NETWORK SETUP`, then press the **Right** button.
5. Select `ENABLE`, then press the **Enter** button to enable the network settings menu.

6. Press the **Left** button to display the NETWORK SETUP menu.
7. Press the **Down** button to select IP ADDRESS SETTING, then press the **Right** button. You can use the following methods to get an IP address.
 - Choose **Auto** when getting the IP address from a DHCP server. The IP address is automatically obtained from the DHCP server whenever the printer is reset or turned on.
 - Choose **Panel** when setting the IP address, subnet mask, and default gateway using the printer's control panel.
- Note:**
 - To use **Auto**, a DHCP server must be correctly configured on the network. See the online help of your operating system for detailed instructions.*
 - Choose **PING** only when setting the IP address using the arp/ping command.*
8. Select **PANEL**, then press the **Enter** button. Press the **Left** button to return to the NETWORK SETUP menu.
9. Press the **Down** button to select IP, SM, or GW, then press the **Right** button.
10. Press the **Up** or **Down** button on the IP ADDRESS screen until the desired value appears. Then press the **Right** button.
11. Press the **Up** or **Down** button on the SUBNET MASK screen until the desired value appears. Then press the **Enter** button.
12. Press the **Up** or **Down** button on the DEFAULT GATEWAY screen until the desired value appears. Then press the **Enter** button to set the values.
13. Press the **Left** button twice to exit the control panel menus.
14. Turn off your printer and then turn it back on. Be sure to wait until the initialization is complete.

Print a network status sheet to confirm the new IP address.

Note:

- You must first set the IP address before using EpsonNet Config with Web Browser.*
- See the User's Guide for more information about settings on the printer's control panel.*

Network Setup Menu

These items are used to make network settings on the printer's control panel.

Note:

The available settings vary depending on your printer model.

Item	Settings
NETWORK SETUP	Disable, Enable
IP ADDRESS SETTING*	Auto, Panel, PING
IP*	0.0.0.0 to 255.255.255.254
SM*	0.0.0.0 to 255.255.255.255
GW*	0.0.0.0 to 255.255.255.255
AppleTalk*	On, Off
MS Network*	On, Off
Bonjour*	On, Off
INIT NETWORK SETTING*	EXECUTE

* Available only when `Enable` is selected for `NETWORK SETUP`.

Instructions on Using a Dial-Up Router

This section describes instructions on using a dial-up router.

If DHCP is used to assign an IP address of the printer and the Dynamic DNS function is not supported, you need to change the printer port setting every time you turn on the printer. Therefore, we recommend that you set a valid IP address for the network interface by using the one of the following methods.

- Set the IP address for the network interface manually. Use EpsonNet Config. See the EpsonNet Config User's Guide for details.
- Specify the network interface by using the bind of DHCP function.
- Set the exclusive address of the DHCP function.

Note:

- ❑ Use NetBEUI printing if you do not want to go through these steps.
- ❑ See the manual of the Dial-Up router for more information on scorp range, bind, exclusive address of the DHCP function.

Function of Universal Plug and Play

When you connect your printer to the network, the printer is automatically assigned with an IP address, and the printer's icon appears in the **My Network Places** folder. By double-clicking the printer's icon, you can access EpsonNet Config with Web Browser for basic information about the printer, such as manufacturer, model name, location, and administrator's name.

Right-click the printer's icon in the **My Network Places** folder and select **Properties**. You can check the brief information of the network interface.

To use this function, the Universal Plug and Play must be installed on Windows Me or future operating systems. For information on how to install Universal Plug and Play, see the Windows Me online help.

Note:

Before using the Universal Plug and Play function, you must enable the Universal Plug and Play function in EpsonNet Config. See the EpsonNet Config User's Guide or "Configuring the Network Interface Using Web-Based EpsonNet Config" on page 86.

Uninstalling Software

Follow the steps below to uninstall the network software.

Windows 7/Vista/Server 2008

1. Click **Start**, click **Control Panel**, and then click **Uninstall a program** (Windows 7/Vista) or **Programs and Features** (Windows Server 2008).
2. Select the utility you want to uninstall, and then click the **Uninstall** button.
3. Follow the on-screen instructions to complete uninstallation.

Windows XP/Server 2003

1. Click **Start**, click **Control Panel**, and then click **Add or Remove Programs**.
2. Select the utility you want to uninstall, and then click the **Change/Remove** button.
3. Follow the on-screen instructions to complete uninstallation.

Windows Me/98/95/2000/NT 4.0

1. Click **Start**, point to **Settings**, and then select **Control Panel**.
2. Double-click the **Add/Remove Programs** icon.
3. Select the utility you want to uninstall, and then click the **Add/Remove** button (Windows Me/98/95/NT 4.0) or the **Change/Remove** button (Windows 2000).
4. Follow the on-screen instructions to complete uninstallation.

Macintosh

1. Double-click the **EpsonNet Config Installer** icon.
2. Click the **Continue** button.
3. In the License dialog box, read the License Agreement, and then click the **Accept** button.
4. Select **Uninstall** from the pull down menu.
5. Click the **Uninstall** button.
6. Follow the on-screen instructions to complete uninstallation.

Note:

You can also uninstall the software by dragging the target folder to the Trash.

Appendix A

Software License Terms

Open Source Software Licenses

Bonjour

This printer product includes the open source software programs which apply the Apple Public Source License Version 1.2 or its latest version ("Bonjour Programs").

We provide the source code of the Bonjour Programs pursuant to the Apple Public Source License Version 1.2 or its latest version until five (5) years after the discontinuation of same model of this printer product. If you desire to receive the source code of the Bonjour Programs, please see the "Contacting Customer Support" in Appendix or Printing Guide of this User's Guide, and contact the customer support of your region.

You can redistribute Bonjour Programs and/or modify it under the terms of the Apple Public Source License Version 1.2 or its latest version.

These Bonjour Programs are WITHOUT ANY WARRANTY; without even the implied warranty of MERCHANTABILITY AND FITNESS FOR A PARTICULAR PURPOSE.

The Apple Public Source License Version 1.2 is as follows. You also can see the Apple Public Source License Version 1.2 at <http://www.opensource.apple.com/apsl/>.

APPLE PUBLIC SOURCE LICENSE
Version 2.0 - August 6, 2003

1. General; Definitions. This License applies to any program or other work which Apple Computer, Inc. ("Apple") makes publicly available and which contains a notice placed by Apple identifying such program or work as "Original Code" and stating that it is subject to the terms of this Apple Public Source License version 2.0 ("License"). As used in this License:

1.1 "Applicable Patent Rights" mean: (a) in the case where Apple is the grantor of rights, (i) claims of patents that are now or hereafter acquired, owned by or assigned to Apple and (ii) that cover subject matter contained in the Original Code, but only to the extent necessary to use, reproduce and/or distribute the Original Code without infringement; and (b) in the case where You are the grantor of rights, (i) claims of patents that are now or hereafter acquired, owned by or assigned to You and (ii) that cover subject matter in Your Modifications, taken alone or in combination with Original Code.

1.2 "Contributor" means any person or entity that creates or contributes to the creation of Modifications.

1.3 "Covered Code" means the Original Code, Modifications, the combination of Original Code and any Modifications, and/or any respective portions thereof.

1.4 "Externally Deploy" means: (a) to sublicense, distribute or otherwise make Covered Code available, directly or indirectly, to anyone other than You; and/or (b) to use Covered Code, alone or as part of a Larger Work, in any way to provide a service, including but not limited to delivery of content, through electronic communication with a client other than You.

1.5 "Larger Work" means a work which combines Covered Code or portions thereof with code not governed by the terms of this License.

1.6 "Modifications" mean any addition to, deletion from, and/or change to, the substance and/or structure of the Original Code, any previous Modifications, the combination of Original Code and any previous Modifications, and/or any respective portions thereof. When code is released as a series of files, a Modification is: (a) any addition to or deletion from the contents of a file containing Covered Code; and/or (b) any new file or other representation of computer program statements that contains any part of Covered Code.

1.7 "Original Code" means (a) the Source Code of a program or other work as originally made available by Apple under this License, including the Source Code of any updates or upgrades to such programs or works made available by Apple under this License, and that has been expressly identified by Apple as such in the header file(s) of such work; and (b) the object code compiled from such Source Code and originally made available by Apple under this License

1.8 "Source Code" means the human readable form of a program or other work that is suitable for making modifications to it, including all modules it contains, plus any associated interface definition files, scripts used to control compilation and installation of an executable (object code).

1.9 "You" or "Your" means an individual or a legal entity exercising rights under this License. For legal entities, "You" or "Your" includes any entity which controls, is controlled by, or is under common control with, You, where "control" means (a) the power, direct or indirect, to cause the direction or management of such entity, whether by contract or otherwise, or (b) ownership of fifty percent (50%) or more of the outstanding shares or beneficial ownership of such entity.

2. Permitted Uses; Conditions & Restrictions. Subject to the terms and conditions of this License, Apple hereby grants You, effective on the date You accept this License and download the Original Code, a world-wide, royalty-free, non-exclusive license, to the extent of Apple's Applicable Patent Rights and copyrights covering the Original Code, to do the following:

2.1 Unmodified Code. You may use, reproduce, display, perform, internally distribute within Your organization, and Externally Deploy verbatim, unmodified copies of the Original Code, for commercial or non-commercial purposes, provided that in each instance:

(a) You must retain and reproduce in all copies of Original Code the copyright and other proprietary notices and disclaimers of Apple as they appear in the Original Code, and keep intact all notices in the Original Code that refer to this License; and

(b) You must include a copy of this License with every copy of Source Code of Covered Code and documentation You distribute or Externally Deploy, and You may not offer or impose any terms on such Source Code that alter or restrict this License or the recipients' rights hereunder, except as permitted under Section 6.

2.2 Modified Code. You may modify Covered Code and use, reproduce, display, perform, internally distribute within Your organization, and Externally Deploy Your Modifications and Covered Code, for commercial or non-commercial purposes, provided that in each instance You also meet all of these conditions:

(a) You must satisfy all the conditions of Section 2.1 with respect to the Source Code of the Covered Code;

(b) You must duplicate, to the extent it does not already exist, the notice in Exhibit A in each file of the Source Code of all Your Modifications, and cause the modified files to carry prominent notices stating that You changed the files and the date of any change; and

(c) If You Externally Deploy Your Modifications, You must make Source Code of all Your Externally Deployed Modifications either available to those to whom You have Externally Deployed Your Modifications, or publicly available. Source Code of Your Externally Deployed Modifications must be released under the terms set forth in this License, including the license grants set forth in Section 3 below, for as long as you Externally Deploy the Covered Code or twelve (12) months from the date of initial External Deployment, whichever is longer. You should preferably distribute the Source Code of Your Externally Deployed Modifications electronically (e.g. download from a web site).

2.3 Distribution of Executable Versions. In addition, if You Externally Deploy Covered Code (Original Code and/or Modifications) in object code, executable form only, You must include a prominent notice, in the code itself as well as in related documentation, stating that Source Code of the Covered Code is available under the terms of this License with information on how and where to obtain such Source Code.

2.4 Third Party Rights. You expressly acknowledge and agree that although Apple and each Contributor grants the licenses to their respective portions of the Covered Code set forth herein, no assurances are provided by Apple or any Contributor that the Covered Code does not infringe the patent or other intellectual property rights of any other entity. Apple and each Contributor disclaim any liability to You for claims brought by any other entity based on infringement of intellectual property rights or otherwise. As a condition to exercising the rights and licenses granted hereunder, You hereby assume sole responsibility to secure any other intellectual property rights needed, if any. For example, if a third party patent license is required to allow You to distribute the Covered Code, it is Your responsibility to acquire that license before distributing the Covered Code.

3. Your Grants. In consideration of, and as a condition to, the licenses granted to You under this License, You hereby grant to any person or entity receiving or distributing Covered Code under this License a non-exclusive, royalty-free, perpetual, irrevocable license, under Your Applicable Patent Rights and other intellectual property rights (other than patent) owned or controlled by You, to use, reproduce, display, perform, modify, sublicense, distribute and Externally Deploy Your Modifications of the same scope and extent as Apple's licenses under Sections 2.1 and 2.2 above.

4. Larger Works. You may create a Larger Work by combining Covered Code with other code not governed by the terms of this License and distribute the Larger Work as a single product. In each such instance, You must make sure the requirements of this License are fulfilled for the Covered Code or any portion thereof.

5. Limitations on Patent License. Except as expressly stated in Section 2, no other patent rights, express or implied, are granted by Apple herein. Modifications and/or Larger Works may require additional patent licenses from Apple which Apple may grant in its sole discretion.

6. Additional Terms. You may choose to offer, and to charge a fee for, warranty, support, indemnity or liability obligations and/or other rights consistent with the scope of the license granted herein ("Additional Terms") to one or more recipients of Covered Code. However, You may do so only on Your own behalf and as Your sole responsibility, and not on behalf of Apple or any Contributor. You must obtain the recipient's agreement that any such Additional Terms are offered by You alone, and You hereby agree to indemnify, defend and hold Apple and every Contributor harmless for any liability incurred by or claims asserted against Apple or such Contributor by reason of any such Additional Terms.

7. Versions of the License. Apple may publish revised and/or new versions of this License from time to time. Each version will be given a distinguishing version number. Once Original Code has been published under a particular version of this License, You may continue to use it under the terms of that version. You may also choose to use such Original Code under the terms of any subsequent version of this License published by Apple. No one other than Apple has the right to modify the terms applicable to Covered Code created under this License.

8. NO WARRANTY OR SUPPORT. The Covered Code may contain in whole or in part pre-release, untested, or not fully tested works. The Covered Code may contain errors that could cause failures or loss of data, and may be incomplete or contain inaccuracies. You expressly acknowledge and agree that use of the Covered Code, or any portion thereof, is at Your sole and entire risk. THE COVERED CODE IS PROVIDED "AS IS" AND WITHOUT WARRANTY, UPGRADES OR SUPPORT OF ANY KIND AND APPLE AND APPLE'S LICENSOR(S) (COLLECTIVELY REFERRED TO AS "APPLE" FOR THE PURPOSES OF SECTIONS 8 AND 9) AND ALL CONTRIBUTORS EXPRESSLY DISCLAIM ALL WARRANTIES AND/OR CONDITIONS, EXPRESS OR IMPLIED, INCLUDING, BUT NOT LIMITED TO, THE IMPLIED WARRANTIES AND/OR CONDITIONS OF MERCHANTABILITY, OF SATISFACTORY QUALITY, OF FITNESS FOR A PARTICULAR PURPOSE, OF ACCURACY, OF QUIET ENJOYMENT, AND NONINFRINGEMENT OF THIRD PARTY RIGHTS. APPLE AND EACH CONTRIBUTOR DOES NOT WARRANT AGAINST INTERFERENCE WITH YOUR ENJOYMENT OF THE COVERED CODE, THAT THE FUNCTIONS CONTAINED IN THE COVERED CODE WILL MEET YOUR REQUIREMENTS, THAT THE OPERATION OF THE COVERED CODE WILL BE UNINTERRUPTED OR ERROR-FREE, OR THAT DEFECTS IN THE COVERED CODE WILL BE CORRECTED. NO ORAL OR WRITTEN INFORMATION OR ADVICE GIVEN BY APPLE, AN APPLE AUTHORIZED REPRESENTATIVE OR ANY CONTRIBUTOR SHALL CREATE A WARRANTY. You acknowledge that the Covered Code is not intended for use in the operation of nuclear facilities, aircraft navigation, communication systems, or air traffic control machines in which case the failure of the Covered Code could lead to death, personal injury, or severe physical or environmental damage.

9. LIMITATION OF LIABILITY. TO THE EXTENT NOT PROHIBITED BY LAW, IN NO EVENT SHALL APPLE OR ANY CONTRIBUTOR BE LIABLE FOR ANY INCIDENTAL, SPECIAL, INDIRECT OR CONSEQUENTIAL DAMAGES ARISING OUT OF OR RELATING TO THIS LICENSE OR YOUR USE OR INABILITY TO USE THE COVERED CODE, OR ANY PORTION THEREOF, WHETHER UNDER A THEORY OF CONTRACT, WARRANTY, TORT (INCLUDING NEGLIGENCE), PRODUCTS LIABILITY OR OTHERWISE, EVEN IF APPLE OR SUCH CONTRIBUTOR HAS BEEN ADVISED OF THE POSSIBILITY OF SUCH DAMAGES AND NOTWITHSTANDING THE FAILURE OF ESSENTIAL PURPOSE OF ANY REMEDY. SOME JURISDICTIONS DO NOT ALLOW THE LIMITATION OF LIABILITY OF INCIDENTAL OR CONSEQUENTIAL DAMAGES, SO THIS LIMITATION MAY NOT APPLY TO YOU. In no event shall Apple's total liability to You for all damages (other than as may be required by applicable law) under this License exceed the amount of fifty dollars (\$50.00).

10. Trademarks. This License does not grant any rights to use the trademarks or trade names "Apple", "Apple Computer", "Mac", "Mac OS", "QuickTime", "QuickTime Streaming Server" or any other trademarks, service marks, logos or trade names belonging to Apple (collectively "Apple Marks") or to any trademark, service mark, logo or trade name belonging to any Contributor. You agree not to use any Apple Marks in or as part of the name of products derived from the Original Code or to endorse or promote products derived from the Original Code other than as expressly permitted by and in strict compliance at all times with Apple's third party trademark usage guidelines which are posted at <http://www.apple.com/legal/guidelinesfor3rdparties.html>.

11. Ownership. Subject to the licenses granted under this License, each Contributor retains all rights, title and interest in and to any Modifications made by such Contributor. Apple retains all rights, title and interest in and to the Original Code and any Modifications made by or on behalf of Apple ("Apple Modifications"), and such Apple Modifications will not be automatically subject to this License. Apple may, at its sole discretion, choose to license such Apple Modifications under this License, or on different terms from those contained in this License or may choose not to license them at all.

12. Termination.

12.1 Termination. This License and the rights granted hereunder will terminate:

(a) automatically without notice from Apple if You fail to comply with any term(s) of this License and fail to cure such breach within 30 days of becoming aware of such breach;

(b) immediately in the event of the circumstances described in Section 13.5(b); or

(c) automatically without notice from Apple if You, at any time during the term of this License, commence an action for patent infringement against Apple; provided that Apple did not first commence an action for patent infringement against You in that instance.

12.2 Effect of Termination. Upon termination, You agree to immediately stop any further use, reproduction, modification, sublicensing and distribution of the Covered Code. All sublicenses to the Covered Code which have been properly granted prior to termination shall survive any termination of this License. Provisions which, by their nature, should remain in effect beyond the termination of this License shall survive, including but not limited to Sections 3, 5, 8, 9, 10, 11, 12.2 and 13. No party will be liable to any other for compensation, indemnity or damages of any sort solely as a result of terminating this License in accordance with its terms, and termination of this License will be without prejudice to any other right or remedy of any party.

13. Miscellaneous.

13.1 Government End Users. The Covered Code is a "commercial item" as defined in FAR 2.101. Government software and technical data rights in the Covered Code include only those rights customarily provided to the public as defined in this License. This customary commercial license in technical data and software is provided in accordance with FAR 12.211 (Technical Data) and 12.212 (Computer Software) and, for Department of Defense purchases, DFAR 252.227-7015 (Technical Data -- Commercial Items) and 227.7202-3 (Rights in Commercial Computer Software or Computer Software Documentation). Accordingly, all U.S. Government End Users acquire Covered Code with only those rights set forth herein.

13.2 Relationship of Parties. This License will not be construed as creating an agency, partnership, joint venture or any other form of legal association between or among You, Apple or any Contributor, and You will not represent to the contrary, whether expressly, by implication, appearance or otherwise.

13.3 Independent Development. Nothing in this License will impair Apple's right to acquire, license, develop, have others develop for it, market and/or distribute technology or products that perform the same or similar functions as, or otherwise compete with, Modifications, Larger Works, technology or products that You may develop, produce, market or distribute.

13.4 Waiver; Construction. Failure by Apple or any Contributor to enforce any provision of this License will not be deemed a waiver of future enforcement of that or any other provision. Any law or regulation which provides that the language of a contract shall be construed against the drafter will not apply to this License.

13.5 Severability. (a) If for any reason a court of competent jurisdiction finds any provision of this License, or portion thereof, to be unenforceable, that provision of the License will be enforced to the maximum extent permissible so as to effect the economic benefits and intent of the parties, and the remainder of this License will continue in full force and effect. (b) Notwithstanding the foregoing, if applicable law prohibits or restricts You from fully and/or specifically complying with Sections 2 and/or 3 or prevents the enforceability of either of those Sections, this License will immediately terminate and You must immediately discontinue any use of the Covered Code and destroy all copies of it that are in your possession or control.

13.6 Dispute Resolution. Any litigation or other dispute resolution between You and Apple relating to this License shall take place in the Northern District of California, and You and Apple hereby consent to the personal jurisdiction of, and venue in, the state and federal courts within that District with respect to this License. The application of the United Nations Convention on Contracts for the International Sale of Goods is expressly excluded.

13.7 Entire Agreement; Governing Law. This License constitutes the entire agreement between the parties with respect to the subject matter hereof. This License shall be governed by the laws of the United States and the State of California, except that body of California law concerning conflicts of law.

Where You are located in the province of Quebec, Canada, the following clause applies: The parties hereby confirm that they have requested that this License and all related documents be drafted in English. Les parties ont exigé que le présent contrat et tous les documents connexes soient rédigés en anglais.

EXHIBIT A.

"Portions Copyright (c) 1999-2003 Apple Computer, Inc. All Rights Reserved.

This file contains Original Code and/or Modifications of Original Code as defined in and that are subject to the Apple Public Source License Version 2.0 (the 'License'). You may not use this file except in compliance with the License. Please obtain a copy of the License at <http://www.opensource.apple.com/apsl/> and read it before using this file.

The Original Code and all software distributed under the License are distributed on an 'AS IS' basis, WITHOUT WARRANTY OF ANY KIND, EITHER EXPRESS OR IMPLIED, AND APPLE HEREBY DISCLAIMS ALL SUCH WARRANTIES, INCLUDING WITHOUT LIMITATION, ANY WARRANTIES OF MERCHANTABILITY, FITNESS FOR A PARTICULAR PURPOSE, QUIET ENJOYMENT OR NON-INFRINGEMENT. Please see the License for the specific language governing rights and limitations under the License."

Other Software Licenses

Info-ZIP copyright and license

This is version 2007-Mar-4 of the Info-ZIP license. The definitive version of this document should be available at <ftp://ftp.info-zip.org/pub/infozip/license.html> indefinitely and a copy at <http://www.info-zip.org/pub/infozip/license.html>.

Copyright © 1990-2007 Info-ZIP. All rights reserved.

For the purposes of this copyright and license, "Info-ZIP" is defined as the following set of individuals:

Mark Adler, John Bush, Karl Davis, Harald Denker, Jean-Michel Dubois, Jean-loup Gailly, Hunter Goatley, Ed Gordon, Ian Gorman, Chris Herborth, Dirk Haase, Greg Hartwig, Robert Heath, Jonathan Hudson, Paul Kienitz, David Kirschbaum, Johnny Lee, Onno van der Linden, Igor Mandrichenko, Steve P. Miller, Sergio Monesi, Keith Owens, George Petrov, Greg Roelofs, Kai Uwe Rommel, Steve Salisbury, Dave Smith, Steven M. Schweda, Christian Spieler, Cosmin Truta, Antoine Verheijen, Paul von Behren, Rich Wales, Mike White.

Permission is granted to anyone to use this software for any purpose, including commercial applications, and to alter it and redistribute it freely, subject to the above disclaimer and the following restrictions:

1. Redistributions of source code (in whole or in part) must retain the above copyright notice, definition, disclaimer, and this list of conditions.

2. Redistributions in binary form (compiled executables and libraries) must reproduce the above copyright notice, definition, disclaimer, and this list of conditions in documentation and/or other materials provided with the distribution. The sole exception to this condition is redistribution of a standard UnZipSFX binary (including SFXWiz) as part of a self-extracting archive; that is permitted without inclusion of this license, as long as the normal SFX banner has not been removed from the binary or disabled.
3. Altered versions--including, but not limited to, ports to new operating systems, existing ports with new graphical interfaces, versions with modified or added functionality, and dynamic, shared, or static library versions not from Info-ZIP--must be plainly marked as such and must not be misrepresented as being the original source or, if binaries, compiled from the original source. Such altered versions also must not be misrepresented as being Info-ZIP releases--including, but not limited to, labeling of the altered versions with the names "Info-ZIP" (or any variation thereof, including, but not limited to, different capitalizations), "Pocket UnZip," "WiZ" or "MacZip" without the explicit permission of Info-ZIP. Such altered versions are further prohibited from misrepresentative use of the Zip-Bugs or Info-ZIP e-mail addresses or the Info-ZIP URL(s), such as to imply Info-ZIP will provide support for the altered versions.
4. Info-ZIP retains the right to use the names "Info-ZIP," "Zip," "UnZip," "UnZipSFX," "WiZ," "Pocket UnZip," "Pocket Zip," and "MacZip" for its own source and binary releases.

Index

- B**
- Bindery emulation.....67, 68
- D**
- Dial-up network.....78
- Dial-up router.....121
- E**
- EpsonNet Config (Macintosh).....84
- EpsonNet Config (Web Browser).....85
- EpsonNet Config (Windows).....82
- EpsonNet Print.....92
- I**
- Initializing the printer.....115
- Installation
- EpsonNet Config (Macintosh).....84
 - EpsonNet Config (Windows).....83
 - EpsonNet Print.....93
- IntranetWare.....68
- IP address.....110, 116, 119
- N**
- NDS.....67
- NetWare
- 3.x.....68, 69
 - 4.x.....68, 72, 74
 - 5.x.....68, 74
 - 6.0.....68, 74
- Network status sheet.....113
- O**
- Operating environment.....10
- P**
- PCONSOLE.....69
- Print Server mode.....66, 68, 78
- Protocols.....10
- R**
- Remote Printer mode.....66, 69, 72, 74, 78
- RJ-45 connector.....15
- S**
- Setting the IP address.....86, 116, 119
- U**
- Using the printer with
- Macintosh.....63
 - NetWare.....65
 - Windows 2000.....56
 - Windows 7.....39
 - Windows Me/98.....49
 - Windows NT 4.0.....61
 - Windows Server 2003.....51
 - Windows Server 2008.....39
 - Windows Vista.....39
 - Windows XP.....44