

How to use EpsonNet Authentication Print Network Interface Card (Ver.01.0x) Firmware Updater

This manual describes how to update the firmware for EpsonNet Authentication Print Network Interface Card to the latest version.

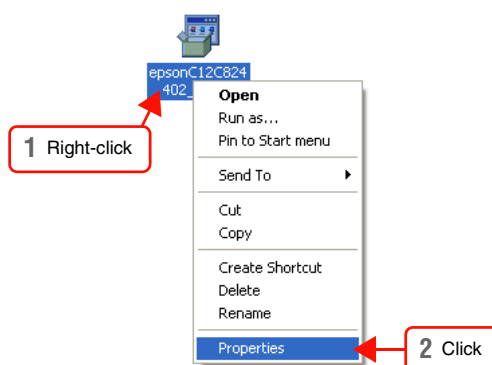
To update, use Epson Firmware Updater (Ver.2.0a or later) as the update tool. You can acquire Epson Firmware Updater from the software CD-ROM that comes with EpsonNet Authentication Print or download it from the Epson Web site.

Notes about updating the firmware

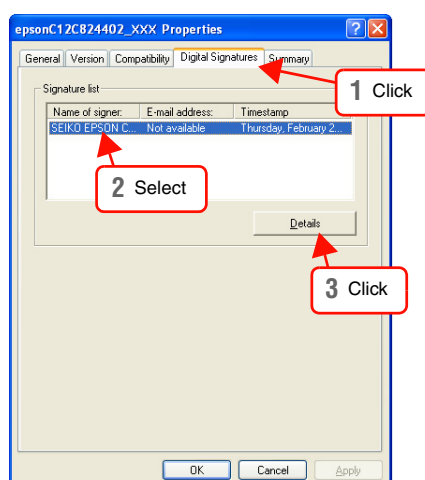
- Updating the firmware is the user's responsibility.
- The update should not fail if the procedure is followed correctly. However, the warranty does not cover any malfunctions that occur for whatever reason (such as communication errors) that may cause the update to fail.
- Only TCP/IP is supported for updating, other protocols cannot be used.
- Update the firmware when the network is not busy.

Confirming the digital signature of the downloaded file

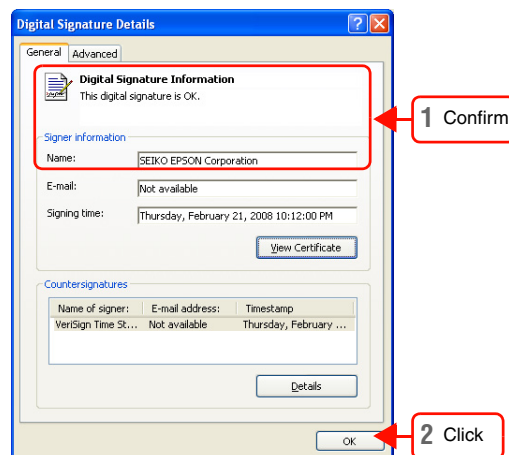
- 1 Right-click **epsonC12C824402_xxx.EXE** which is the file downloaded from the web, and then click **Properties**.



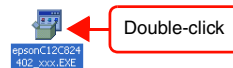
- 2 Click the **Digital Signatures** tab, select a digital signature from the Signature list, and then click the **Details** button.



- 3** Confirm that the following contents are displayed, and then click **OK**.
Digital Signature Information: This digital signature is OK.
Signer information - Name: SEIKO EPSON CORPORATION



- 4** Double-click **epsonC12C824402_xxx.EXE** to extract it.
An updater file, xxxxxxxx.efu, is created.



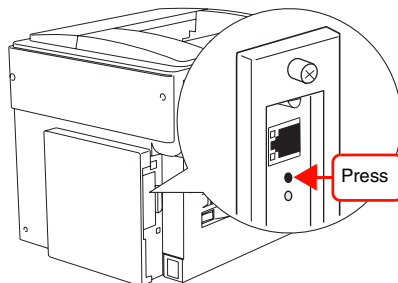
After confirming the digital signature, update the firmware of the network interface card by using the updater file.

Updating the firmware of the network interface card

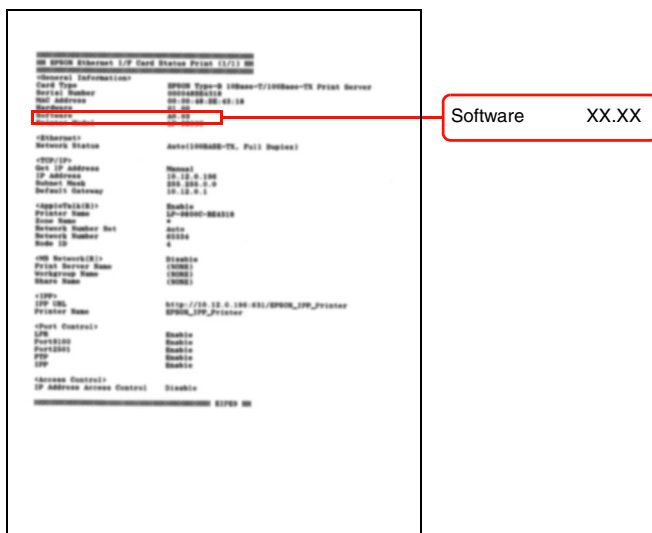
The instructions use Epson Firmware Updater (Ver.2.0a) as an example for the explanation.

1 Print a status sheet to confirm the version of the firmware.

1. Press the status sheet button (black) on the network interface card installed on the printer to print a simple status sheet (1 page).



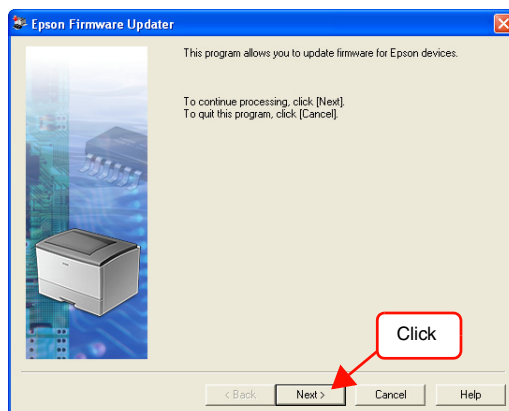
2. Confirm the version of Software.
After updating the firmware, print a status sheet and confirm the version again.



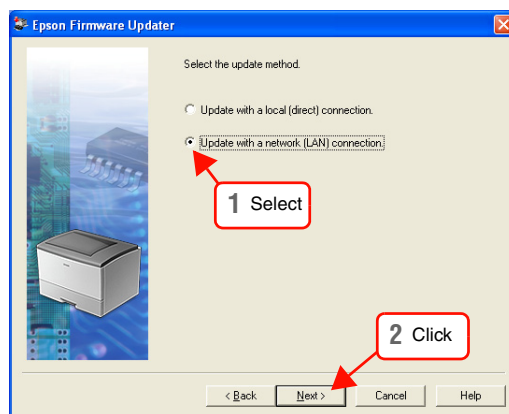
- 2 Use the network cable to connect the network interface card to the computer you are using for the update.
Then turn the printer on.
Make sure that an IP address is assigned to the network interface card.

3 Start Epson Firmware Updater on the computer.

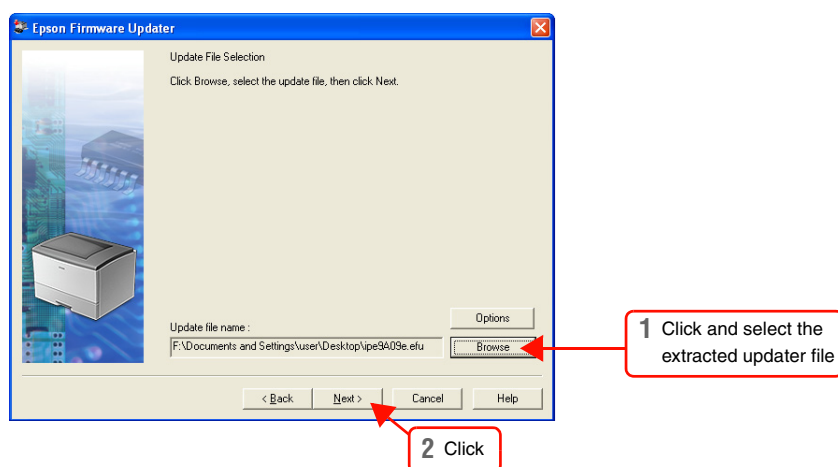
- 4 Follow the on-screen instructions.



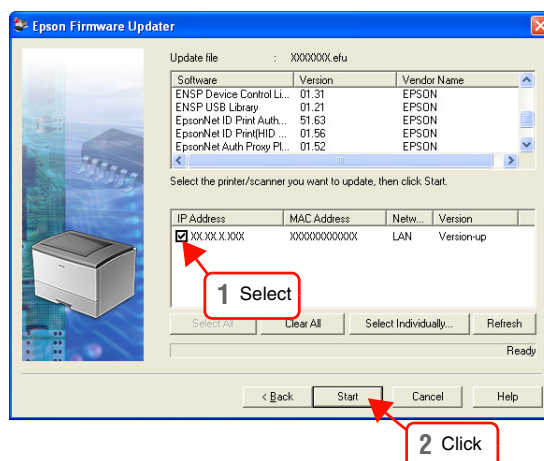
- 5 When the following screen appears, select **Update with a network (LAN) connection.**, and then click **Next**.



- 6 Click **Browse**, select the extracted updater file, **xxxxxxx.efu**, and then click **Next**.
If the network interface card is located on an external network, click **Option**, select **TCP/IP**, and then select the **Search External Network** check box.



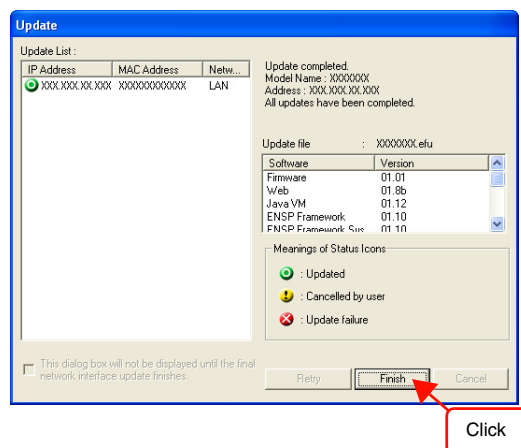
- 7 Select the network interface card which you want to update, and then click **Start**.
Only the network interface cards supported by the updater file appear.
You can select multiple network interface cards.
To select the network interface cards that are not displayed in the list, select **Select Individually**, and then enter the IP address.



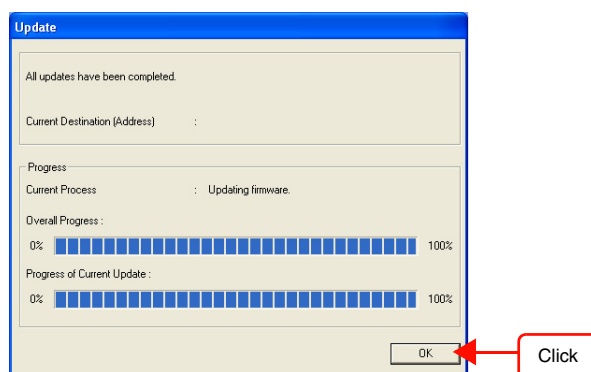
- 8 When the message to start the update appears, read it and click **OK**.

- 9 If a password has been set for the network interface card, a password input screen appears. Enter the password, and then click **OK**.
This screen does not appear if a password is not set for the network interface card.

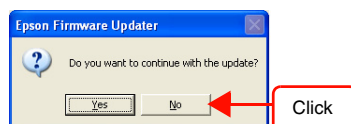
- 10** When “Update completed” appears, click **Finish**.
It takes 3 to 4 minutes until this screen appears after step 8 or 9.



- 11** When “All updates have been completed.” appears, click **OK**.



- 12** When “Do you want to continue with the update” appears, click **No** to close Epson Firmware Updater.



- 13** Print a status sheet of the network interface card to confirm the firmware was updated.
See step 1 about how to print status sheet and where to check for the version.

Updating the firmware of the network interface card is complete.

Updating EpsonNet Authentication Print Software

When executing authentication printing, the firmware of the network interface card works in cooperation with EpsonNet Authentication Print Software. After updating the firmware, be sure to update EpsonNet Authentication Print Software to Ver.1.5b or later. The latest EpsonNet Authentication Print Software can be downloaded from the Epson Web site. See the instructions on the Web site about how to update EpsonNet Authentication Print Software.