

User's Guide Update

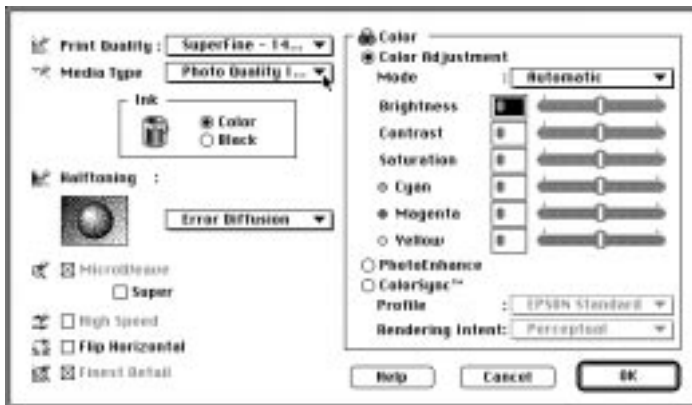
The following changes apply to both Windows® and Macintosh® printer drivers.

Super option provided in addition to the MicroWeave setting

The Super (MicroWeave) check box has been added to the More Settings Dialog box, as shown below. This feature is enabled when Print Quality is set to SuperFine - 1440dpi. Select Super if your printout has banding problems even with MicroWeave turned on. Be aware that printing time may increase when Super is selected.



(Actual screen may vary)

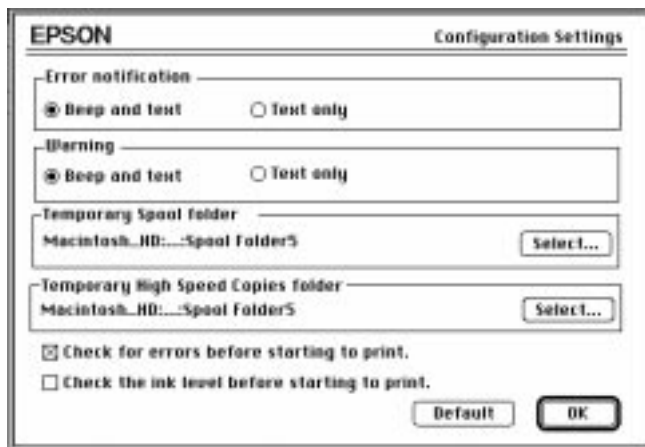


(Actual screen may vary)

The following changes apply to the Macintosh printer driver only.

Configuration button moved from the EPSON StatusMonitor window

The configuration button has been moved to the Utility dialog box, and two new features have been added to the Configuration dialog box. You can now choose the folders for the temporary spooling of print data and for multiple-copy print data storage.



Printer driver names changed

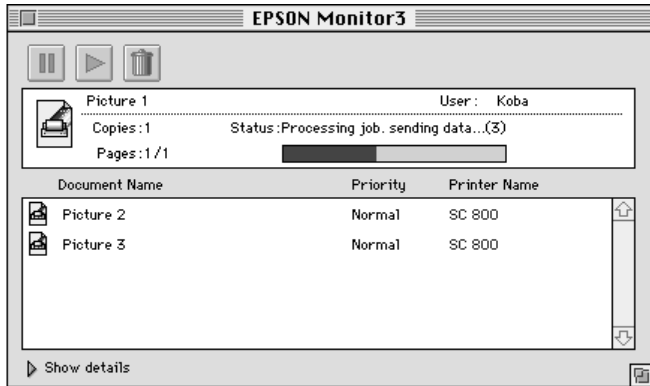
The printer driver names have been changed as follows:

Printer	Previous	New	Connection
EPSON Stylus COLOR 800	EPSON Stylus (EX)	SC 800	Serial interface
	EPSON Stylus (AT)	SC 800 (AT)	AppleTalk
EPSON Stylus COLOR 1520	EPSON Stylus (EX)	SC 1520	Serial interface
	EPSON Stylus (AT)	SC 1520 (AT)	AppleTalk
EPSON Stylus COLOR 3000	EPSON Stylus (EX)	SC 3000	Serial interface
	EPSON Stylus (AT)	SC 3000 (AT)	AppleTalk

Please note that the new printer driver name appears in the Chooser dialog box, but the previous name appears in your manual. EPSON apologizes for any confusion.


EPSON Monitor2 utility updated to EPSON Monitor3


You can now use EPSON Monitor3 instead of EPSON Monitor2 to monitor print jobs in the background. After sending a print job, select Epson Monitor3 from the Application menu at the right end of the menu bar. This opens a dialog box similar to the following:




Note:

You can also open EPSON Monitor3 by double-clicking the EPSON Monitor3 icon in the Extensions folder.

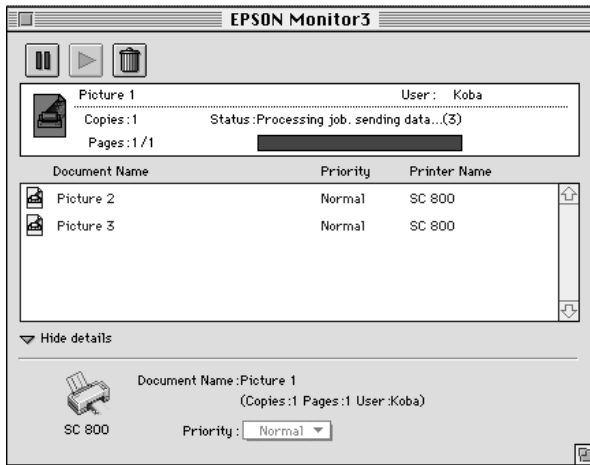
To stop printing, click the document, and click  at the top of the dialog box.

To restart printing, click the document, and click  at the top of the dialog box.

To cancel a print job, click the document, and click  at the top of the dialog box.

To prioritize print jobs in a print queue, follows the steps below.

1. Click the Show details arrow at the bottom of the dialog box. You will see an extended dialog box similar to the one below.



2. Click a document name in the document name box to change its priority.
3. Select Urgent, Normal, or Hold from the Priority list.