

Network Guide

Copyright and Trademarks

No part of this publication may be reproduced, stored in a retrieval system, or transmitted in any form or by any means, mechanical, photocopying, recording, or otherwise, without the prior written permission of Seiko Epson Corporation. No patent liability is assumed with respect to the use of the information contained herein. Neither is any liability assumed for damages resulting from the use of the information contained herein.

Neither Seiko Epson Corporation nor its affiliates shall be liable to the purchaser of this product or third parties for damages, losses, costs, or expenses incurred by purchaser or third parties as a result of: accident, misuse, or abuse of this product or unauthorized modifications, repairs, or alterations to this product, or (excluding the U.S.) failure to strictly comply with Seiko Epson Corporation's operating and maintenance instructions.

Seiko Epson Corporation and its affiliates shall not be liable against any damages or problems arising from the use of any options or any consumable products other than those designated as Original Epson Products or Epson Approved Products by Seiko Epson Corporation.

Microsoft®, Windows®, and Windows Vista® are registered trademarks of Microsoft Corporation.

Apple®, Macintosh®, Mac®, Mac OS®, AppleTalk®, and Bonjour® are registered trademarks of Apple, Inc. Apple Chancery, Chicago, Geneva, Hoefler Text, Monaco and New York are trademarks or registered trademarks of Apple, Inc.

EPSON and EPSON ESC/P are registered trademarks and EPSON AcuLaser and EPSON ESC/P 2 are trademarks of Seiko Epson Corporation.

HP and HP LaserJet are registered trademarks of the Hewlett-Packard Company.

PCL is a registered trademark of Hewlett-Packard Company.

Adobe, the Adobe logo and PostScript3 are trademarks of Adobe Systems Incorporated, which may be registered in certain jurisdictions.

CompactFlash is a trademark of SanDisk Corporation, registered in the United States and other countries.

This product includes RSA BSAFE® Cryptographic software of EMC Corporation.

RSA and BSAFE are registered trademarks or trademarks of EMC Corporation in the United States and other countries.



This product contains Runtime Modules of IBM Rational Rhapsody, Copyright IBM Corporation 2008. All Rights Reserved.

General Notice: Other product names used herein are for identification purposes only and may be trademarks of their respective owners. Epson disclaims any and all rights in those marks.

Copyright © 2012 Seiko Epson Corporation. All rights reserved.

Contents

Safety Instructions

| | |
|--|---|
| Warning, Caution, Important, and Note. | 7 |
|--|---|

Chapter 1 Introduction

| | |
|--|----|
| About Your Printer. | 8 |
| About This Guide. | 8 |
| Operating Environment. | 9 |
| Large format inkjet printers. | 9 |
| Features of the Network Interface. | 9 |
| Network Interface Operation. | 10 |
| Status light. | 10 |
| Network connector. | 10 |
| About the Software. | 11 |

Chapter 2 How To

| | |
|--|----|
| Overview. | 12 |
| Selecting a Printing Method. | 13 |
| Printing from Windows. | 13 |
| Printing from Macintosh. | 13 |
| Features of the Printing Methods. | 13 |
| Installing Components on Your Computer. | 14 |
| About Installing Components on Your Computer. | 14 |
| Windows 7/Vista/Server 2008. | 14 |
| Windows XP. | 16 |
| Windows Server 2003. | 17 |
| Macintosh. | 19 |
| Setting Up the Network Interface. | 19 |
| Connecting the Network Interface to the Network. | 19 |
| Configuring the Network Interface (For Windows Users). | 20 |
| Configuring the Network Interface (For Macintosh Users). | 21 |
| Installing the Printer Driver. | 22 |
| About Installing the Printer Driver. | 22 |

| | |
|--------------------------------------|----|
| Windows 7/Vista/Server 2008. | 22 |
| Windows XP. | 26 |
| Windows Server 2003. | 30 |
| Macintosh. | 34 |

Chapter 3 **Network Software**

| | |
|---|----|
| EpsonNet Config for Windows. | 36 |
| About EpsonNet Config. | 36 |
| System Requirements. | 36 |
| Installing EpsonNet Config. | 37 |
| Accessing the EpsonNet Config User's Guide. | 37 |
| EpsonNet Config for Macintosh. | 37 |
| About EpsonNet Config. | 37 |
| System Requirements. | 38 |
| Installing EpsonNet Config. | 38 |
| Accessing the EpsonNet Config User's Guide. | 38 |
| EpsonNet Config with Web Browser. | 39 |
| About EpsonNet Config. | 39 |
| Configuring the Network Interface Using EpsonNet Config with Web Browser. | 39 |
| Opening Screen. | 42 |
| Remote Manager. | 42 |
| About Remote Manager. | 42 |
| Configuring the Network Interface Using Remote Manager. | 42 |
| EpsonNet Print. | 43 |
| About EpsonNet Print. | 43 |
| System Requirements. | 43 |
| Installing EpsonNet Print. | 43 |
| For Windows 7/Vista/XP/Server 2008/Server 2003 Users. | 44 |
| Configuring the Printer Port. | 49 |

Chapter 4 **Troubleshooting**

| | |
|--|----|
| General Problems. | 52 |
| Cannot configure the network interface or cannot print from the network.. . . . | 52 |
| Cannot print even if you have assigned the IP address to the computer and the printer.. . . . | 52 |
| Unable to start EpsonNet Config.. | 52 |
| The message "EpsonNet Config cannot be used because no network is installed." appears when you start EpsonNet Config.. | 53 |

| | |
|---|----|
| The message “Could not complete communicating configuration data” appears when you send settings to the network interface.. | 53 |
| Unable to start EpsonNet Config with Web Browser.. | 53 |
| The Model Name and IP Address do not appear in the EpsonNet Config dialog box.. | 54 |
| Printing a Network Status Sheet (Large Format Inkjet Printers).. | 54 |

Chapter 5 Tips for Administrator

| | |
|---|----|
| Setting an IP Address on the Printer’s Control Panel (Large Format Inkjet Printers).. | 55 |
| Network Setup Menu. | 56 |

Appendix A Software License Terms

| | |
|---|----|
| Open Source Software Licenses. | 58 |
| Bonjour. | 58 |
| Other Software Licenses. | 60 |
| Info-ZIP copyright and license. | 60 |
| WPA supplicant. | 61 |

Index

Safety Instructions

Warning, Caution, Important, and Note

**Warning**

must be followed carefully to avoid serious bodily injury.

**Caution**

must be followed carefully to avoid bodily injury.

**Important**

must be observed to avoid damage to your equipment.

Note

contains important information and useful tips on the operation of your printer.

Chapter 1

Introduction

About Your Printer

Your printer has a built-in Ethernet interface and can connect anywhere on your network using 10Base-T, 100Base-TX, and 1000Base-T Ethernet. The built-in Ethernet interface, which is called the network interface in this manual, automatically selects the correct standard when it connects to a network. In addition, it automatically selects appropriate network protocols.

Because the network interface supports multiple protocols and automatically detects protocols on your network, you can print from Microsoft® Windows® and Apple® Macintosh® applications.

Use the Software Disc to easily configure the network interface for use on the TCP/IP network and install the printer driver. You can use the printer on the TCP/IP network at once.

If you want to configure the network interface for protocols such as TCP/IP, WSD, LLTD, IPP/IPPS, UPnP, Bonjour, MS Network, and SNMP, use EpsonNet Config, the configuration utility provided with your product, to quickly and easily configure the network interface to use those protocols.

Note:

The EpsonNet Config utility configures the network interface to work only with protocols that exist on your network. This does not imply that you can use all of the above-mentioned protocols on your network or operating system. The protocols that the network interface can use may vary depending on the operating system and the network configuration.

About This Guide

This Network Guide contains information about using the network interface on a network. It includes how to set up the network interface, install the configuration software, and modify network settings of your printer and computers.

For information about your printer, see your User's Guide.

Note:

- ❑ *To read the online guide, you must have Adobe Reader or Adobe Acrobat Reader installed on your computer.*

- ❑ *This guide is written for network administrators, and many of the steps included here require detailed network knowledge and administrator rights.*
- ❑ *The term “network administrator” refers to the person responsible for maintaining the network. “Administrator” is synonymous with “Supervisor” in this guide.*
- ❑ *The term “network interface” refers to the built-in Ethernet interface of the printer in this guide.*
- ❑ *Some screen shots in this guide may list a printer name other than your printer. This difference does not alter the instructions.*
- ❑ *The supported operating systems are different depending on the printer. See your printer’s User’s Guide for the supported operating systems.*

Operating Environment

The network interface supports the following environments.

Large format inkjet printers

| OS | Protocol | IPv4 | IPv6 |
|--|-------------------------------|-----------|---------------|
| Windows 8 | TCP/IP (Standard TCP/IP port) | supported | not supported |
| Windows 7 Windows Vista Windows XP (Home, Professional) | TCP/IP (EpsonNet Print port) | supported | not supported |
| Mac OS X 10.8 Mac OS X 10.7 Mac OS X 10.6 Mac OS X 10.5 | Bonjour | supported | not supported |

Features of the Network Interface

- ❑ Connects your Epson printer using a built-in Ethernet interface, which is called the network interface in this manual, to the network.

- ❑ Supports multiple protocols, such as TCP/IP, WSD, LLTD, IPP/IPPS, UPnP, Bonjour, MS Network, and SNMP.
- ❑ Supports 10Base-T, 100Base-TX, and 1000Base-T Ethernet.
- ❑ Supports Bonjour on Mac OS X 10.5 or later.

Network Interface Operation

Status light

The indicator lights provide you with important information on the operations of the network interface.

Large format inkjet printers (Models that do not support 1000 Mbps communication)

| Status light | Data light | Network Status |
|---------------------|-------------------|--------------------------------|
| Green | Yellow | Ready (10 M link) |
| Green | Yellow (Flashing) | Receiving packets (10 M link) |
| Red | Yellow | Ready (100 M link) |
| Red | Yellow (Flashing) | Receiving packets (100 M link) |

Large format inkjet printers (Models that support 1000 Mbps communication)

| Status light | Data light | Network Status |
|---------------------|-------------------|---------------------------------|
| Red | Yellow | Ready (100 M link) |
| Red | Yellow (Flashing) | Receiving packets (100 M link) |
| Green | Yellow | Ready (1000 M link) |
| Green | Yellow (Flashing) | Receiving packets (1000 M link) |

Network connector

RJ-45 connector: This connector is used to connect an Ethernet cable to a network. You can use this cable for 10Base-T, 100Base-TX, and 1000Base-T Ethernet.

**Important:**

You must use the following shielded twisted-pair cable to connect the network interface to a network.

- Category-5 or higher for the 10Base-T or 100Base-TX connection*
- Category-6 or higher for the 1000Base-T connection*

About the Software

The Software Disc provided with your printer includes the following network software.

Note:

The software provided varies depending on your printer model.

- EpsonNet Config for Windows is a Windows-based configuration utility for administrators that allows you to configure the network interface for various protocols such as TCP/IP, MS Network, AppleTalk, IPP, and SNMP. See “EpsonNet Config for Windows” on page 36.
- EpsonNet Config for Macintosh is a Macintosh-based configuration utility for administrators that allows you to configure the network interface for TCP/IP, AppleTalk, and IPP. See “EpsonNet Config for Macintosh” on page 37.
- EpsonNet Config with Web Browser and Remote Manager are Web-based configuration utility programs that allow you to configure a network interface for TCP/IP, MS Network, AppleTalk, IPP, and SNMP. See “EpsonNet Config with Web Browser” on page 39 and “Remote Manager” on page 42.
- EpsonNet Print is a utility program that provides peer to peer printing to Epson printers on the TCP/IP network. See “EpsonNet Print” on page 43.

Chapter 2

How To

Overview

This section describes the general procedure on how to set up the network interface for use on a network.

1. Check the network interface operation.

Check the functions and operations of the network interface, such as status lights and RJ-45 connector. See “Network Interface Operation” on page 10 for details.

2. Select a printing method.

Select a printing method appropriate for your network environment and operating system. If you are not sure, see “Printing from Windows” on page 13 or “Printing from Macintosh” on page 13 for details.

3. Install the necessary components on your computer.

Make sure the necessary components (such as TCP/IP) are installed on the computer, and network settings (such as IP address, subnet mask, etc.) of the computer is set. See “About Installing Components on Your Computer” on page 14 for details.

4. Connect the network interface to the network.

Connect the network interface to the network. See “Connecting the Network Interface to the Network” on page 19 for details.

5. Configure the network interface and install the printer driver.

See “Configuring the Network Interface (For Windows Users)” on page 20 or “Configuring the Network Interface (For Macintosh Users)” on page 21 for details.

6. If necessary, configure the network settings of the network interface using EpsonNet Config.

Configure the network interface for TCP/IP, AppleTalk, etc. using EpsonNet Config. For Windows users, see “About EpsonNet Config” on page 36. For Macintosh users, see “About EpsonNet Config” on page 37.

Selecting a Printing Method

Printing from Windows

Check if there is a Windows 7/Vista/XP/Server 2008/Server 2003 print server on your network, and then use the suggestions below.

Note:

Only the recommended printing methods are introduced here. See “Features of the Printing Methods” on page 13 for information on additional methods.

If no Windows 7/Vista/XP/Server 2008/Server 2003 print server exists

We recommend TCP/IP printing. See “Windows 7/Vista/Server 2008” on page 22, “Windows XP” on page 26, or “Windows Server 2003” on page 30.

If a Windows 7/Vista/XP/Server 2008/Server 2003 print server exists

On the server, set the printer to connect and turn it into a shared printer. Your clients can then print to this shared printer.

Printing from Macintosh

Mac OS X 10.5 or later

- Bonjour

Features of the Printing Methods

This section describes features of the printing methods available for you to choose.

TCP/IP printing

Advantages

- No computer as a network interface is required.
- No special utility for Windows 7/Vista/XP/Server 2008/Server 2003 is required.

- You can see the printer status using EPSON Status Monitor.
- You can print via a router.

Disadvantages

- You need to set up TCP/IP.

Internet printing

Advantages

- You can print to the printer over the Internet.

Disadvantages

- EPSON Status Monitor cannot be used.
- TCP/IP and DNS settings are required.
- For Windows 7/Vista/XP/Server 2008/Server 2003, you cannot share the Internet printer.

Installing Components on Your Computer

About Installing Components on Your Computer

Before configuring the network interface and printing from the computer, you need to install the necessary components (such as TCP/IP) and assign an IP address and subnet mask for your computer, depending on the printing method you want to use. See the section in this chapter appropriate for your operating system.

Note:

- The Windows operating system CD-ROM may be required during the installation.*
- When using TCP/IP for printing, you need to set the IP address, the subnet mask, and the default gateway of the computer.*

Windows 7/Vista/Server 2008

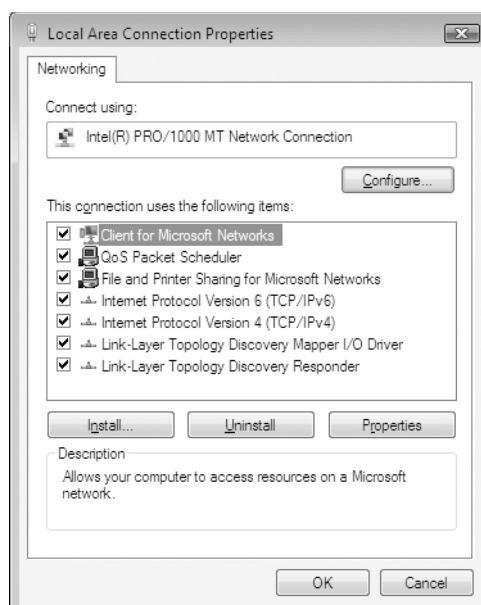
Use the following procedure to install the necessary components.

1. Click **Start**, click **Control Panel**, and then click **View network status and tasks** or double-click **Network and Sharing Center**.
2. Click **Local Area Connection** (Windows 7), or **View Status** (Windows Vista/Server 2008), and then click the **Properties** button.

Note:

If the User Account Control screen appears, click the **Yes** or **Continue** button.

3. Check if the following necessary components are in the list.



The following table lists the components required for configuring the network interface with EpsonNet Config.

| EpsonNet Config's setting screens | Necessary components |
|--|--|
| TCP/IP, WSD, IPP/IPPS, UPnP, Bonjour, MS Network | Internet Protocol (TCP/IP IPv4) or Internet Protocol (TCP/IP IPv6) |

The following table lists the components required for network printing.

| Printing method | Necessary components |
|-----------------|--|
| TCP/IP printing | Internet Protocol (TCP/IP IPv4) or Internet Protocol (TCP/IP IPv6) |

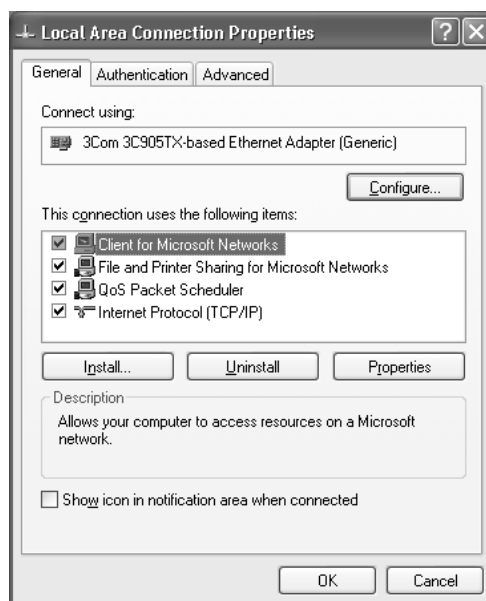
4. Double-click **Internet Protocol Version 4 (TCP/IPv4)** or **Internet Protocol Version 6 (TCP/IPv6)** on the Local Area Connection Properties dialog box to open the properties dialog box. Set the IP address, the subnet mask, etc. and then click **OK**.
5. Restart the computer.

The necessary components are now installed. Go to the section “Setting Up the Network Interface” on page 19.

Windows XP

For Windows XP, use the following procedure to install the necessary components.

1. Click **Start**, highlight **Control Panel**, and then click **Network and Internet Connections**. Select **Network Connections**.
2. Under **LAN or High-Speed Internet**, click the **Local Area Connection** icon.
3. Under **Network Tasks**, click **Change settings of this connection**.
4. Check if the following necessary components are in the list.



The following table lists the components required for configuring the network interface with EpsonNet Config.

| EpsonNet Config's setting screens | Necessary components |
|--|----------------------------|
| TCP/IP, WSD, IPP/IPPS, UPnP, Bonjour, MS Network | Internet Protocol (TCP/IP) |

The following table lists the components required for network printing.

| Printing method | Necessary components |
|-----------------|----------------------------|
| TCP/IP printing | Internet Protocol (TCP/IP) |

5. Double-click **Internet Protocol (TCP/IP)** on the Local Area Connection Properties dialog box to open the Internet Protocols (TCP/IP) Properties dialog box. Set the IP address, the subnet mask, etc. and then click **OK**.
6. Restart the computer.

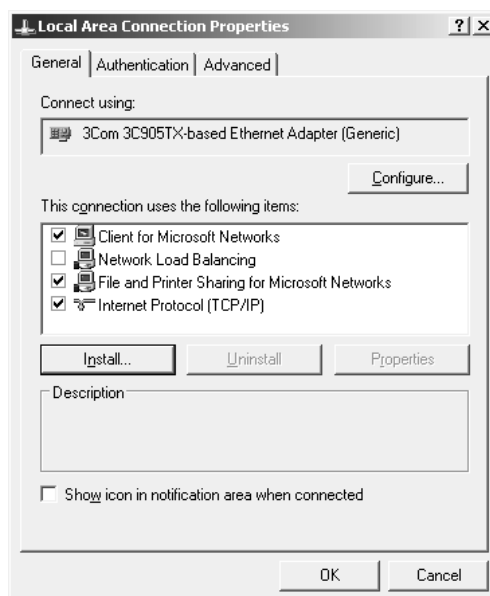
The necessary components are now installed. Go to the section “Setting Up the Network Interface” on page 19.

Windows Server 2003

For Windows Server 2003, use the following procedure to install the necessary components.

1. Click **Start**, point to **Control Panel**, and then select **Network Connections**. Click **Local Area Connections**.
2. Click the **Properties** button.

3. Check if the following necessary components are in the list.



The following table lists the components required for configuring the network interface with EpsonNet Config.

| EpsonNet Config's setting screens | Necessary components |
|--|----------------------------|
| TCP/IP, WSD, IPP/IPPS, UPnP, Bonjour, MS Network | Internet Protocol (TCP/IP) |

The following table lists the components required for network printing.

| Printing method | Necessary components |
|-----------------|----------------------------|
| TCP/IP printing | Internet Protocol (TCP/IP) |

4. Double-click **Internet Protocol (TCP/IP)** on the Local Area Connection Properties dialog box to open the Internet Protocols (TCP/IP) Properties dialog box. Set the IP address, the subnet mask, etc. and then click **OK**.
5. Restart the computer.

The necessary components are now installed. Go to the section “Setting Up the Network Interface” on page 19.

Macintosh

To assign an IP address, subnet mask, etc. to your Macintosh, follow the steps below.

Mac OS X

1. From the Apple menu, select **System Preferences**.
2. Open the **Network** control panel. Click the **TCP/IP** tab.

Note:

*For Mac OS X 10.5 or later, select **Ethernet** as the connecting method on the Network control panel, select the method to assign the IP address from the Configure menu, and then assign the IP address.*

3. Select **Built-in Ethernet** from the Show pull-down menu.
4. Assign an IP address and other settings if necessary.
5. Click the **Apply Now** button to save any changes.

Go to the section “Setting Up the Network Interface” on page 19.

Setting Up the Network Interface

Connecting the Network Interface to the Network

Follow the instructions below to connect the network interface to the network.

1. Make sure that your printer is turned off.
2. Connect one end of the network cable to the RJ-45 connector on the network interface, and the other end to the network.



Important:

- You must use the following shielded twisted-pair cable to connect the network interface to a network.

-- Category-5 or higher for the 10Base-T or 100Base-TX connection

-- Category-6 or higher for the 1000Base-T connection

- ❑ *Do not connect the network interface and the computer directly. Be sure to use a HUB to connect the network interface to the network.*

Note:

You can use 10Base-T, 100Base-TX, and 1000Base-T Ethernet. When you print a lot of data, we recommend you use a higher-speed with light network traffic.

3. Turn on your printer. After the status lights go off, print a network status sheet.



Important:

After turning off the printer, wait until the status lights go off before turning it back on; otherwise the network interface may not work correctly.

Note for Mac OS X 10.5 or later:

Since the printer supports Bonjour and is on by default, you can use the printer on a network just by connecting it to the network. If you want to disable the Bonjour setting, use the printer's control panel. See "Setting an IP Address on the Printer's Control Panel (Large Format Inkjet Printers)" on page 55 for details.

Now, you can configure the network interface to use on the TCP/IP network and also install the printer driver using the Software Disc shipped with your printer.

If you are using Windows, see "Configuring the Network Interface (For Windows Users)" on page 20.

If you are using Macintosh, see "Configuring the Network Interface (For Macintosh Users)" on page 21.

Configuring the Network Interface (For Windows Users)

Configure the network interface for use on the TCP/IP network and install the printer driver on your computer.

1. Make sure your printer is connected to the network (a hub or router).
2. Insert the Software Disc into the CD/DVD drive.
3. The Epson Install Navi screen opens automatically.

If the Epson Install Navi screen does not appear, double-click **InstallNavi.exe** on the Software Disc.

4. Select the **I agree to the contents of the License Agreement** check box and then click the **Next** button.
5. The Software Select screen appears. To print via a network, make sure to select the **Epson Driver and Utilities** check box and **Epson Network Utilities** check box, then click the **Install** button.

Note:

*If your printer is connected to your computer with a USB cable, clear the **Epson Network Utilities** check box.*

6. Software installation starts. Follow the on-screen instructions to complete the installation.

Configuring the Network Interface (For Macintosh Users)

Configure the network interface for use on the TCP/IP network and install the printer driver on your computer.

1. Make sure your printer is connected to the network (a hub or router).
2. Insert the Software Disc into the CD/DVD drive.

EPSON folder opens automatically.

3. Double-click the **Install Navi** icon in the EPSON folder.

The Epson Install Navi screen opens.

4. Enter your user name and password in the authentication screen.
5. Select the **I agree to the contents of the License Agreement** check box and then click the **Next** button.
6. The Software Select screen appears. To print via a network, make sure to select the **Epson Driver and Utilities** check box and **Epson Network Utilities** check box, then click the **Install** button.

Note:

*If your printer is connected to your computer with a USB cable, clear the **Epson Network Utilities** check box.*

7. Software installation starts. Follow the on-screen instructions to complete the installation.

Setting Up the Printer

Mac OS X 10.5 or later

1. Open **System Preferences**.
2. Open **Print & Fax**.
3. Click the **+** button to add a new printer.
4. Select the desired printer model that is connected with Bonjour.

Note:

*If your printer is not displayed with the desired connection, click **More Printers**, select the desired connection from the drop down list, and then select the printer model.*

5. Click **Add**.

Now you can use the printer on the TCP/IP network.

Note:

If your product supports the scanning function, see the product's User's Guide to make the settings.

Installing the Printer Driver

About Installing the Printer Driver

To print to the network printer, you need to install the printer driver on the computer. The following section explains how to install the printer driver manually. See the section in this chapter appropriate for your operating system.

Windows 7/Vista/Server 2008

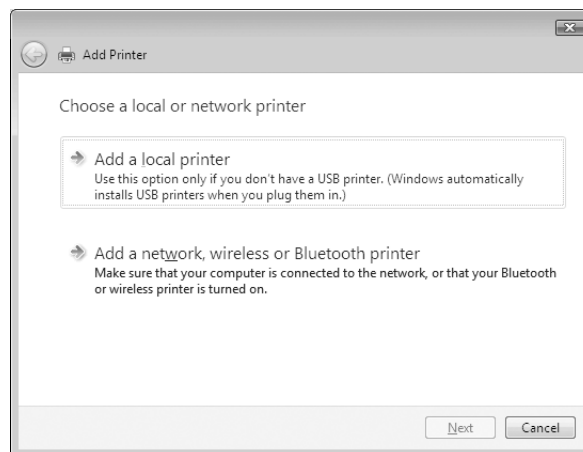
The printer driver installation procedure differs depending on the printing method you prefer.

TCP/IP printing

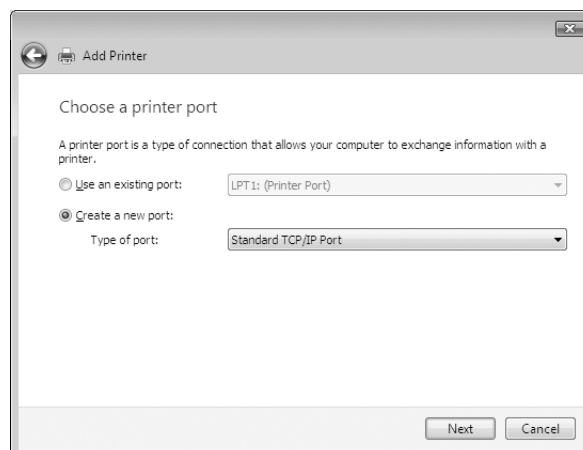
Note:

If you are using EpsonNet Print, the setup procedure is different. See “About EpsonNet Print” on page 43 for details. Note that EpsonNet Print does not support IPv6 environment.

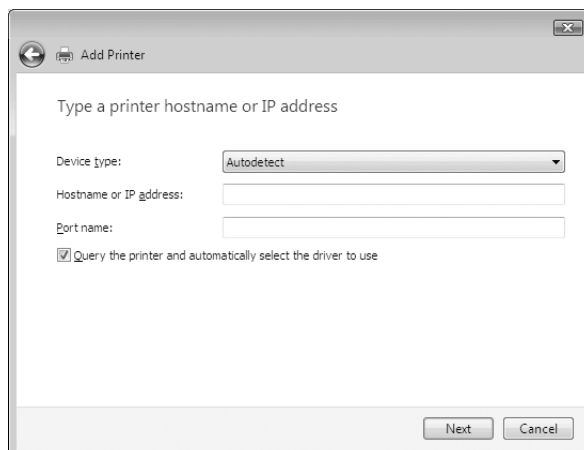
1. Click **Start, Control Panel**, and then **View devices and printers** (Windows 7) or **Printers** (Windows Vista/Server 2008).
2. Click **Add a printer** to start the Add Printer wizard.
3. Click **Add a local printer**.



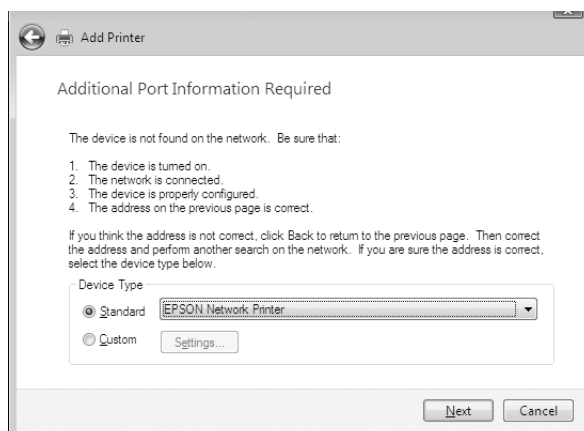
4. Select the **Create a new port** radio button, and then select **Standard TCP/IP Port** from the list. Then click **Next**.



5. Enter the IP address of the network interface and then click **Next**.



6. If an error occurs, the following dialog box appears. Select the **Standard** radio button and then select **EPSON Network Printer**. Click **Next**.



7. Click **Finish**.
8. See “Installing a printer driver” on page 25 to install the printer driver.

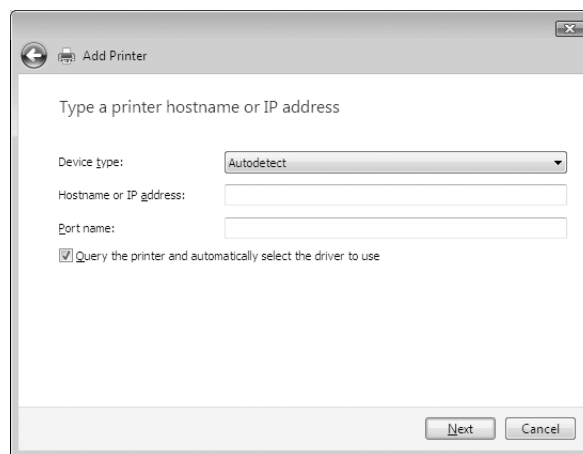
Internet printing (IPP/IPPS)

1. Click **Start, Control Panel**, and then **View devices and printers** (Windows 7) or **Printers** (Windows Vista/Server 2008).
2. Click **Add a printer** to start the Add Printer wizard.

3. Click **Add a network, wireless or Bluetooth printer**.
4. Click **The printer that I want isn't listed**.
5. Select the **Add a printer using a TCP/IP address or hostname** radio button and then click **Next**.
6. Enter the URL of the target device to the **Hostname** or **IP address** box using the format below. The URL should be the same as the URL you set on EpsonNet Config's IPP/IPPS Information page.

http://IP address of network interface:631/Printer name

Example: http://192.168.100.201:631/EPSON_IPP_Printer



Note:

To check the IP address of the network interface, use EpsonNet Config. See “About EpsonNet Config” on page 36 for details.

7. Follow the on-screen instructions to set up the device. See “Installing a printer driver” on page 25 if necessary.
8. If you want to print with IPPS (Secure IPP printing), you have to import a digital certificate to your printer using EpsonNet Config with Web browser. See “Remote Manager” on page 42 for details.

Installing a printer driver

1. Insert the Software Disc shipped with the device.

2. Close the Epson Install Navi screen if it appears.
3. On the Add Printer screen, click the **Have Disk** button. The Install From Disk dialog box appears.
4. Click **Browse**.
5. Select the CD/DVD drive for Drives, and double-click the **WINX64** folder or the **WINX86** folder depending on your operating system. Click **Open**.
6. Click **OK** in the Install From Disk dialog box.
7. Select the model name of the device, and then click **Next**.

Note:

*If the Add Printer wizard prompts you to select either **Keep existing driver** or **Replace existing driver**, be sure to select the **Replace existing driver** radio button.*

8. Click **Finish** and follow the on-screen instructions to complete the setup.

Windows XP

The printer driver installation procedure differs depending on the printing method you prefer.

TCP/IP printing

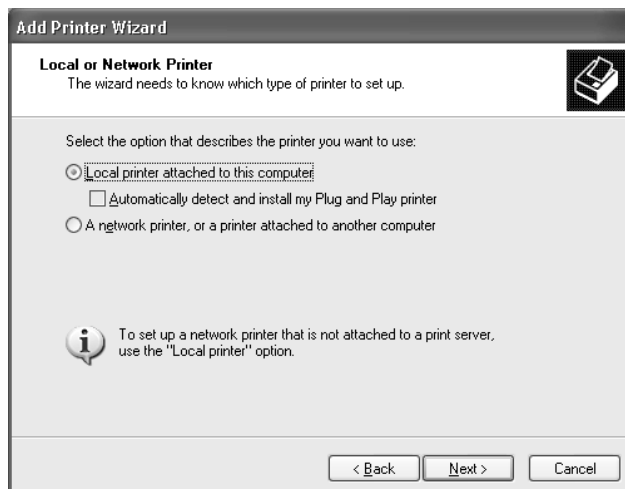
Note:

If you are using EpsonNet Print, the setup procedure is different. See “About EpsonNet Print” on page 43 for details.

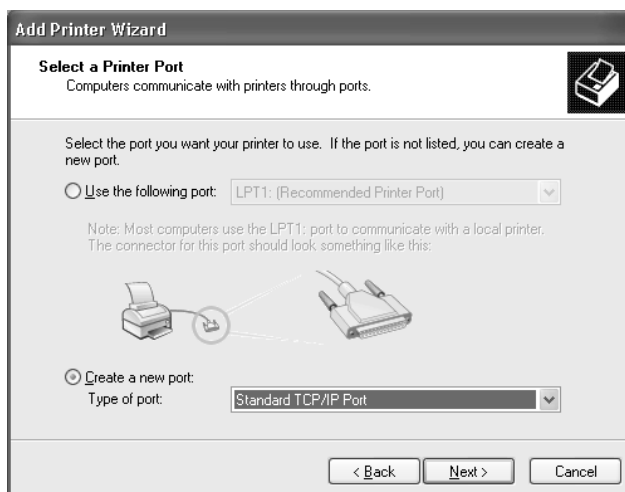
1. Click **Start**, click **Control Panel**, click **Printers and Other Hardware**, and then click **Printers and Faxes**.
2. Under **Printer Tasks**, click **Add a printer** to start the Add Printer wizard, and then click **Next**.
3. Click **Local printer attached to this computer**, clear the **Automatically detect and install my Plug and Play printer** check box, and then click **Next**.

Note:

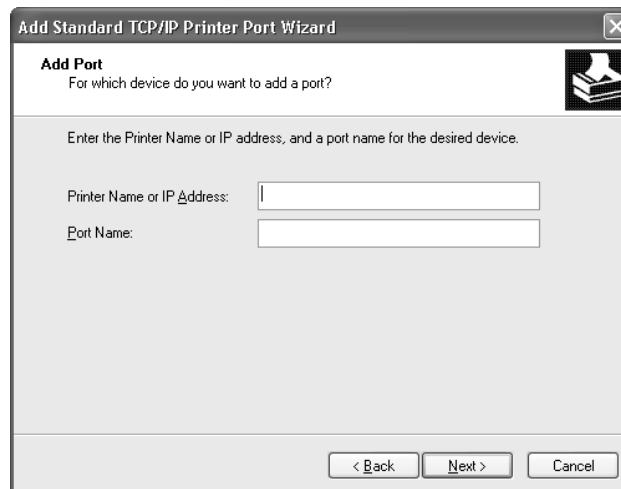
You must clear the **Automatically detect and install my Plug and Play printer** check box because the printer is attached directly to the network, not to a Windows XP computer.



4. Select the **Create a new port** radio button, and then select **Standard TCP/IP Port** from the list. Then click **Next**.



5. Enter the IP address of the network interface and then click **Next**.



6. If an error occurs, the following dialog box appears. Select the **Standard** radio button and then select **EPSON Network Printer**. Click **Next**.



7. Click **Finish**.
8. See “Installing a printer driver” on page 29 to install the printer driver.

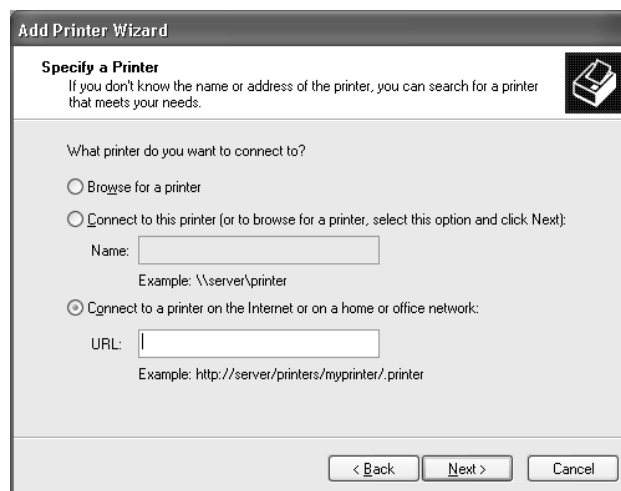
Internet printing (IPP/IPPS)

1. Click **Start**, click **Control Panel**, click **Printers and Other Hardware**, and then click **Printers and Faxes**.

2. Under **Printer Tasks**, click **Add a printer** to start the Add Printer wizard, and then click **Next**.
3. Click **A network printer, or a printer attached to another computer**, and then click **Next**.
4. Select the **Connect to a printer on the Internet or on a home or office network** radio button.
5. Enter the URL of the target printer using the format below. The URL should be the same as the URL you set on EpsonNet Config's IPP/IPPS Information page.

http://IP address of printer:631/Printer name

Example: http://192.168.100.201:631/EPSON_IPP_Printer



Note:

To check the IP address of the network interface, use EpsonNet Config. See “About EpsonNet Config” on page 36 for details.

6. Follow the on-screen instructions to set up the printer. See “Installing a printer driver” on page 29 if necessary.
7. If you want to print with IPPS (Secure IPP printing), you have to import a digital certificate to your printer using EpsonNet Config with Web browser. See “Remote Manager” on page 42 for details.

Installing a printer driver

1. Insert the Software Disc shipped with the printer.
2. Close the Epson Install Navi screen if it appears.

3. On the Add Printer screen, click the **Have Disk** button. The Install From Disk dialog box appears.
4. Click **Browse**.
5. Select the CD/DVD drive for Drives, and double-click the **WINX64** or **WINX86** folder. Click **Open**.
6. Click **OK** in the Install From Disk dialog box.
7. Select the model name of the printer, and then click **Next**.

Note:

*If the Add Printer wizard prompts you to select either **Keep existing driver** or **Replace existing driver**, be sure to select the **Replace existing driver** radio button.*

8. Click **Finish** and follow the on-screen instructions to complete the setup.

Windows Server 2003

The printer driver installation procedure differs depending on the printing method you prefer.

TCP/IP printing

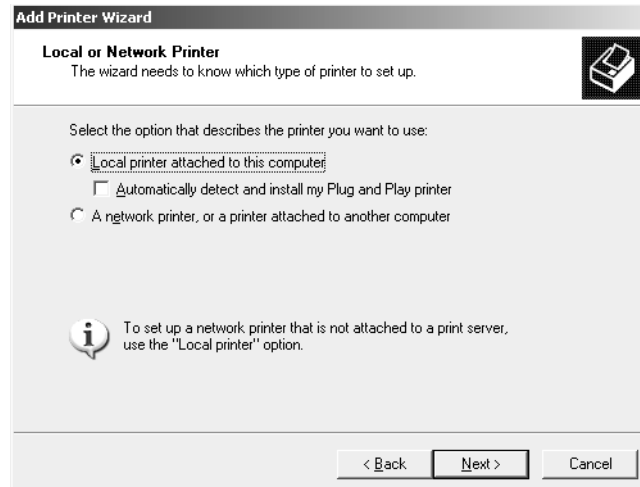
Note:

If you are using EpsonNet Print, the setup procedure is different. See “About EpsonNet Print” on page 43 for details.

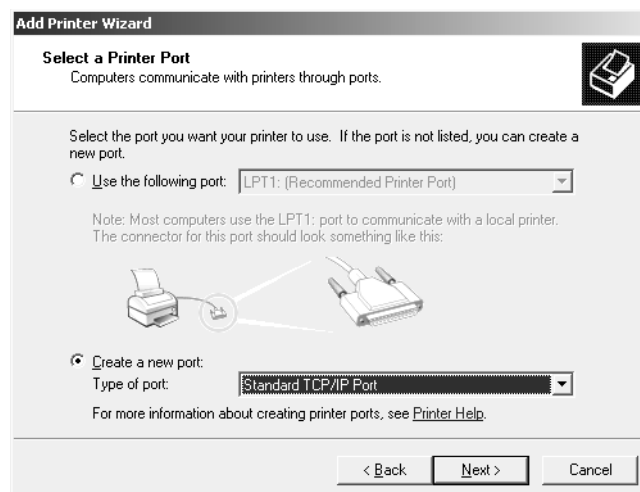
1. Click **Start**, and then select **Printers and Faxes**.
2. Double-click the **Add Printer** icon to start the Add Printer wizard, and then click **Next**.
3. Click **Local printer attached to this computer**, clear the **Automatically detect and install my Plug and Play printer** check box, and then click **Next**.

Note:

You must clear the **Automatically detect and install my Plug and Play printer** check box because the printer is attached directly to the network, not to a computer.



4. Select the **Create a new port** radio button, and then select **Standard TCP/IP Port** from the list. Click **Next**.



5. When Add Standard TCP/IP Printer Port Wizard dialog box appears, click **Next**.

6. Enter the IP address of the network interface and then click **Next**.

7. If an error occurs, the following dialog box appears. Select the **Standard** radio button and then select **EPSON Network Printer**. Click **Next**.

8. Click **Finish**.
9. See “Installing a printer driver” on page 33 to install the printer driver.

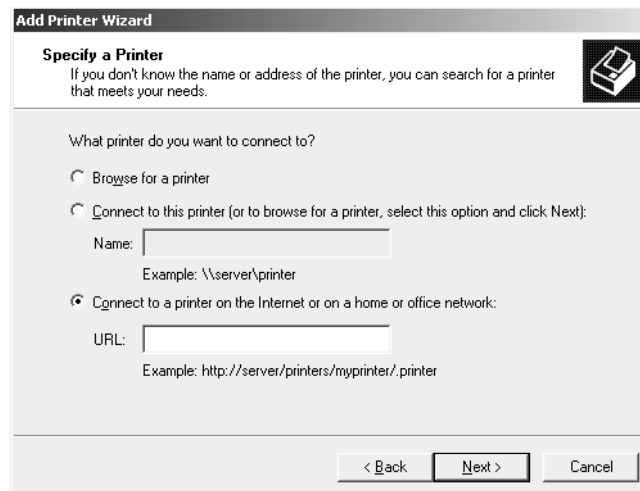
Internet printing (IPP/IPPS)

1. Click **Start**, and then select **Printers and Faxes**.
2. Double-click the **Add Printer** icon to start the Add Printer wizard, and then click **Next**.

3. Select **A network printer, or a printer attached to another computer**, and then click **Next**.
4. Select the **Connect to a printer on the Internet or on a home or office network** radio button.
5. Enter the URL of the target printer using the format below. The URL must be the same URL you set on EpsonNet Config's IPP/IPPS Information page.

http://IP address of printer:631/Printer name

Example: http://192.168.100.201:631/EPSON_IPP_Printer



Note:

To check the IP address of the network interface, use EpsonNet Config. See “About EpsonNet Config” on page 36 for details.

6. Follow the on-screen instructions to set up the printer. See “Installing a printer driver” on page 33 if necessary.
7. If you want to print with IPPS (Secure IPP printing), you have to import a digital certificate to your printer using EpsonNet Config with Web browser. See “Remote Manager” on page 42 for details.

Installing a printer driver

1. Insert the Software Disc shipped with the printer.
2. Close the Epson Install Navi screen if it appears.
3. On the Add Printer screen, click the **Have Disk** button. The Install From Disk dialog box appears.

4. Click **Browse**.
5. Select the CD/DVD drive for Drives, and double-click the **WINX64** or **WINX86** folder. Click **Open**.
6. Click **OK** in the Install From Disk dialog box.
7. Select the model name of the printer, and then click **Next**.

Note:

*If the Add Printer wizard prompts you to select either **Keep existing driver** or **Replace existing driver**, be sure to select the **Replace existing driver** radio button.*

8. Click **Finish** and then follow the on-screen instructions to complete the setup.

Macintosh

Follow the steps below to set a printer.

Note:

Make sure that the printer driver is installed on your Macintosh before following the steps below. See the manual shipped with your printer for instruction on how to install the printer driver.

Mac OS X 10.5 or later

Bonjour printing

1. Open **System Preferences**.
2. Open **Print & Fax**.
3. Click the **+** button to add a new printer.
4. Select the desired printer model that is connected with Bonjour.
5. Click **Add**.

TCP/IP printing

1. Open **System Preferences**.
2. Open **Print & Fax**.

3. Click the **+** button to add a new printer.
4. Click **IP**.
5. Select the desired printing protocol from the pull-down list.
6. Enter the host name or IP address of the printer.
7. Select the desired printer model.
8. Click **Add**.

Chapter 3

Network Software

This chapter explains how to use the network software provided with your printer.

Note:

The software provided varies depending on your printer model.

EpsonNet Config for Windows

About EpsonNet Config

EpsonNet Config is a Windows-based configuration software for administrators to configure the network interface for TCP/IP.

Note:

Be sure to use EpsonNet Config included on the Software Disc shipped with this product.

System Requirements

The following table lists the system requirements of EpsonNet Config.

| | |
|-----------------------|---|
| Operating systems | Windows 8 Windows 7 Windows Vista Windows XP Professional/Home Edition Windows Server 2008/Windows Server 2008 R2 Windows Server 2003/Windows Server 2003 R2 |
| Memory | 150 MB or more |
| Hard disk drive space | 50 MB |

Installing EpsonNet Config

You can install EpsonNet Config on your computer from the Software Disc that comes with your printer. Insert the Software Disc in the CD/DVD drive, select **EpsonNet Config** on the Software Select screen.

Note:

- ❑ *Log on to the operating system with an administrator account to install EpsonNet Config.*
- ❑ *If you add or delete protocols or services from your operating system after installing EpsonNet Config, EpsonNet Config may not work correctly. If this happens, uninstall EpsonNet Config and then install it again.*
- ❑ *If the Windows Security Alert window appears after you start EpsonNet Config, click the **Allow access** or **Unblock** button; otherwise the devices are not listed on the screen of EpsonNet Config.*

Accessing the EpsonNet Config User's Guide

The EpsonNet Config User's Guide contains detailed information on EpsonNet Config. Follow the steps below to access the EpsonNet Config User's Guide.

1. Click **Start**, point to **All Programs**, select **EpsonNet**, and then select **EpsonNet Config V3**.
2. Click **EpsonNet Config User's Guide**.

The EpsonNet Config User's Guide appears. By clicking the links on the front page or contents page, you can get information on using EpsonNet Config.

EpsonNet Config for Macintosh

About EpsonNet Config

EpsonNet Config for Macintosh is a Macintosh-based configuration software for administrators that allows you to configure the network interface for TCP/IP.

Note:

Be sure to use EpsonNet Config included on the Software Disc shipped with this product.

System Requirements

The following table lists the system requirements of EpsonNet Config.

| | |
|-----------------------|---|
| Operating systems | Mac OS 10.5 or higher Java 1.4 or later is installed |
| Models | PowerPC Macintosh/Intel Macintosh |
| Memory | 150 MB or more |
| Hard disk drive space | 50 MB |

Installing EpsonNet Config

You can install EpsonNet Config on your computer from the Software Disc that comes with your printer. Insert the Software Disc in the CD/DVD drive, select **EpsonNet Config** on the Software Select screen.

Accessing the EpsonNet Config User's Guide

The EpsonNet Config User's Guide contains detailed information on EpsonNet Config. Follow the steps below to access the EpsonNet Config User's Guide.

1. Start the Finder.
2. In the **Applications** folder, double-click the **EpsonNet** folder, and then double-click the **EpsonNet Config V3** folder. Finally, double-click the **EpsonNet Config** icon.

EpsonNet Config starts.

3. From the Help menu, select **EpsonNet Config Help**.

The EpsonNet Config User's Guide appears. By clicking the links on the front page or contents page, you can get information on using EpsonNet Config.

EpsonNet Config with Web Browser

About EpsonNet Config

EpsonNet Config with Web Browser is a Web-based utility designed to configure the printer for use on a network.

By typing the IP address of the network interface for the URL in your browser, you can start EpsonNet Config to allow you to configure the network interface for TCP/IP, NetWare, MS Network, AppleTalk, IPP, and SNMP.

Supported Web browser

- Microsoft Internet Explorer version 6.0 or later
- Apple Safari 3 or later
- Mozilla Firefox version 3.6 or later

Configuring the Network Interface Using EpsonNet Config with Web Browser

After you have assigned an IP address to the network interface using EpsonNet Setup, EpsonNet Config for Windows or Macintosh, or the arp/ping command, you can configure the network interface using EpsonNet Config with Web Browser.

Note:

- A Web browser must be installed on your computer.*
- TCP/IP must be correctly set for the computer and the network interface.*
- Do not run both EpsonNet Config for Windows or Macintosh and EpsonNet Config with Web Browser at the same time.*
- Your browser may restrict some characters you can use. For details, see your browser or operating system documentation.*

The following procedure shows an example of configuring the network interface on a TCP/IP IPv4 network.

1. Turn on your printer.
2. Run EpsonNet Config using one of the following ways.

- Run EpsonNet Config for Windows or Macintosh. Select the printer you want to configure from the list and then click **Launch Browser**.
- Open your browser, and then type in the IP address of the network interface directly. Do not run EpsonNet Config for Windows or Macintosh.

https://IP address of network interface/

Example: **https://192.168.100.201/**

Note:

- To check the IP address of the network interface, use EpsonNet Config. See “About EpsonNet Config” on page 36 for Windows users, or see “About EpsonNet Config” on page 37 for Macintosh users for details.
 - If Windows security alert screen appears, click **Continue** to start EpsonNet Config with Web Browser.
3. Click **TCP/IP** under Network on the Configuration menu, then click **IPv4 Address** to display the TCP/IP IPv4 settings screen.

Note:

If you want to configure a protocol other than TCP/IP, configure the desired settings on Configuration - Network screen.

4. Select a method for acquiring the IP address. When you select **Auto**, DHCP becomes available and assigns an IP address automatically. If you want to set the IP address manually, select **Manual**.

Note:

- The network administrator must check any changes made to the IP address settings.
- When **Auto** is selected, DHCP becomes available. To use the DHCP server, make sure it is installed on your computer and correctly configured. See your operating system’s online help for detailed instructions.
- If **Set Using Automatic Private IP Addressing (APIPA)** is enabled, a private IP address is automatically assigned to the network interface even when there are no DHCP servers on your system or your network.
- If the DNS function is not supported, we recommend that you select **Manual** and then enter an IP address. This is because if you select **Auto**, the IP address of the network interface changes every time you turn on the printer so that you need to change the printer port setting accordingly.

- To assign an IP address manually, enter the IP address, the subnet mask, and the default gateway. Be sure the IP address does not conflict with any other devices on the network.

Note:

If there is a server or a router functioning as a gateway, enter the IP address of the server or the router for the gateway address. If there is no gateway, leave the default values there.

- If you want to get a private address between 169.254.1.1 and 169.254.254.254 automatically when an IP address cannot be obtained by the DHCP server, leave it at **Enable** for **Set Using Automatic Private IP Addressing (APIPA)**; otherwise, select **Disable**.
- When setting an IP address using the ping command, select **Enable** for **Set Using PING**. Select **Disable** when setting an IP address with EpsonNet Config; this prevents any unexpected change of the IP address.
- Select **Enable** for **Acquire DNS Server Address Automatically** if you want to acquire the DNS server address using the DHCP server.

If you want to enter the DNS server address manually, select **Disable** and then enter the IP address of the DNS server.

- Select **Enable** for **Acquire Host Name and Domain Name Automatically** if you want to acquire the host name and the domain name using the DHCP server.

If you want to specify manually, enter the host name and the domain name in the text boxes.

- Select **Enable** for **Register Network Interface Address to DNS Server** if you want to register the host name and domain name to the DNS server through the DHCP server that supports Dynamic DNS.

If you want to register the host name and the domain name directly to the DNS server, select **Enable** for **Register Network Interface Address Directly to DNS Server**.

- Mac OS X only:
Select **Enable** or **Disable** for **Use Bonjour**. If you select **Enable**, enter the Bonjour Name and the Bonjour Printer Name.
- Do not exit the Web browser and do not send a job to the printer until this message appears. Follow the on-screen instructions to reset the printer.

Note:

- Since the new IP address becomes available after the printer is reset, you need to restart EpsonNet Config by entering the new IP address.*

- ❑ Only changes on the page where you press the **Transmit** button take effect.

Opening Screen

Any user can access the opening screen by typing the IP address of the network interface into the address bar of your browser.

Note:

- ❑ The item appears only if your printer supports the function, and the name of the item may vary depending on the model.
- ❑ See the *EpsonNet Config with Web Browser help* for details about each item.

Remote Manager

About Remote Manager

Remote Manager is a Web-based utility designed to configure the printer for use on a network.

By typing the IP address of the network interface into the address bar in your browser, you can start Remote Manager which allows you to configure the network interface for TCP/IP, NetWare, MS Network, AppleTalk, IPP, and SNMP.

Supported Web browser

- ❑ Windows Internet Explorer version 7.0 or later
- ❑ Apple Safari 3.0 or later (for Windows users)
- ❑ Apple Safari 4.0.2 or later (for Mac OS users)
- ❑ Mozilla Firefox version 11.0 or later

Configuring the Network Interface Using Remote Manager

After you have assigned an IP address to the network interface using EpsonNet Setup, EpsonNet Config for Windows or Macintosh, or the arp/ping command, you can configure the network interface using Remote Manager.

Starting and operating methods for Remote Manager are the same as EpsonNet Config with Web Browser. See “Configuring the Network Interface Using EpsonNet Config with Web Browser” on page 39 for details.

EpsonNet Print

About EpsonNet Print

EpsonNet Print is a utility program that provides peer to peer printing to Epson printers on the TCP/IP network.

By using EpsonNet Print, you can find a printer located in the same segment or beyond a router. You can select LPR standard printing, LPR enhanced printing, or High-speed printing.

Note:

EpsonNet Print does not support IPv6 environment.

System Requirements

The following table lists the system requirements of EpsonNet Print.

| | |
|-------------------|---|
| Operating systems | Windows 8 Windows 7 Windows Vista (with Service Pack 2 or higher) Windows XP Home Edition/Professional (with Service Pack 3 or higher) Windows Server 2008 (with Service Pack 2 or higher) Windows Server 2008 R2 Windows Server 2003 (with Service Pack 2 or higher) |
|-------------------|---|

Installing EpsonNet Print

You can install EpsonNet Print on your computer from the Software Disc that comes with your printer. Insert the Software Disc in the CD/DVD drive, select **EpsonNet Print** on the Software Select screen.

For Windows 7/Vista/XP/Server 2008/Server 2003 Users

Follow the steps below to add a port using the Add Printer Wizard.

- ❑ If you want to add a port for a printer with its IP address assigned automatically by the DHCP server or router, see “Adding a port for a printer assigned with a dynamic IP address” on page 44.
- ❑ If you want to add a port for a printer with its IP address assigned manually, see “Adding a port for a printer assigned with a static IP address” on page 47.

Note:

- ❑ Be sure that the computer is connected to the network and TCP/IP is correctly set.
- ❑ A valid IP address must be assigned to the printer.

Adding a port for a printer assigned with a dynamic IP address

1. **For Windows 7/Vista/Server 2008:** Click **Start, Control Panel**, and then **View devices and printers** (Windows 7), or **Printers** (Windows Vista/Server 2008). Click **Add a printer** to start the Add Printer Wizard.

For Windows XP: Click **Start** and then **Printers and Faxes**. Under Printer Tasks, click **Add a printer** to start the Add Printer Wizard. Click **Next**.

For Windows Server 2003: Click **Start** and then **Printers and Faxes**. Double-click **Add Printer** in the Printers folder to start the Add Printer Wizard. Click **Next**.

2. **For Windows 7/Vista/Server 2008:** Click **Add a local printer**. Select the **Create a new port** radio button, and then select **EpsonNet Print Port** from the list. Click **Next**.

Note:

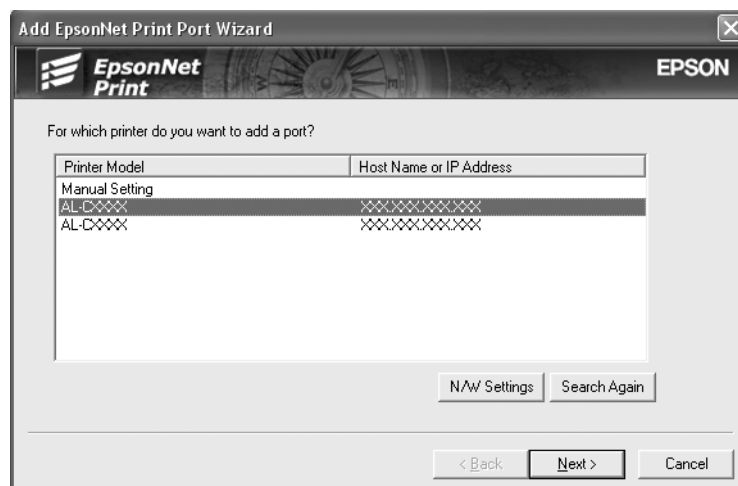
*If the Windows Security Alert screen appears, click the **Allow access** or **Unblock** button, and then click the **Search Again** button to search the printers.*

For Windows XP/Server 2003: Click **Local printer attached to this computer**, clear the **Automatically detect and install my Plug and Play printer** check box, and then click **Next**. Select the **Create a new port** radio button, and then select **EpsonNet Print Port** from the list. Click **Next**.

Note:

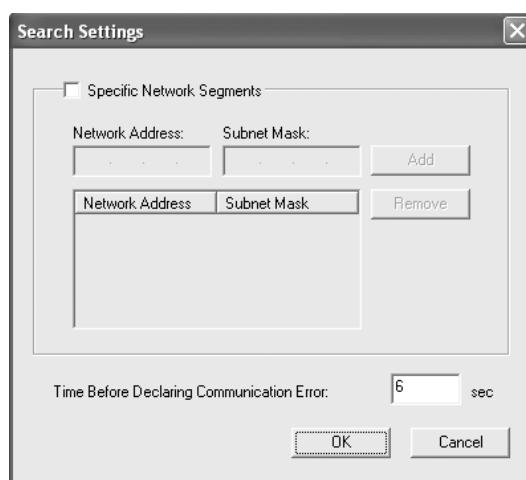
*If the Windows Security Alert screen appears, click the **Unblock** button, and then click the **Search Again** button to search the printers.*

3. Select the target printer, and then click **Next**.

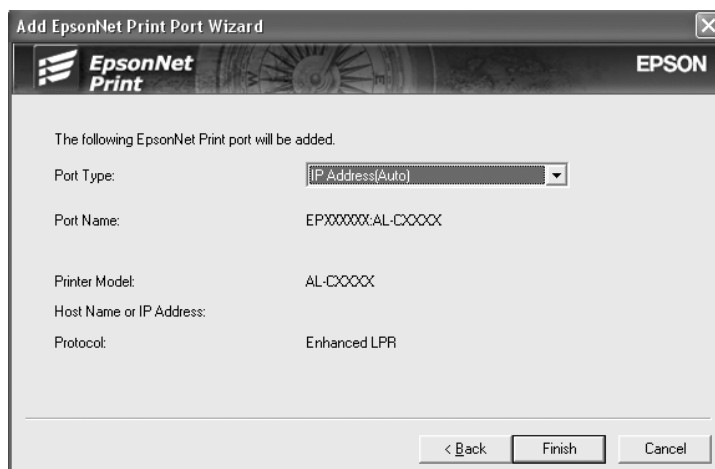


Note:

- If the target printer is not in the list, click the **Search Again** button to search the printers using new parameters.
- Each column can be sorted in ascending or descending order by clicking the column header. However, **Manual Setting** is always displayed on the top of the list regardless of sorting.
- If you want to search printers in other segments, click the **N/W Settings** button. Select the **Specific Network Segments** check box, and then enter the network address and subnet mask of the network segment for the search. Then click the **Add** button. You can also specify the time before declaring communication error.



4. Confirm the information about the printer's port you want to configure, and then click **Finish**.



| Items | Explanations |
|----------------------|---|
| Port Type | <p>The following items are listed in the pull-down menu, and you can select the port type you need.</p> <p>IP Address (Auto): Configure the port automatically. If the IP address of the printer is acquired automatically and the computer and the printer are in the same segment, you can select this port type.</p> <p>IP Address (Manual): Use the printer's IP Address for the port name.</p> <p>HostName (DNS): Use the printer's host name registered in the DNS server for the port name.</p> <p>MS Network: Use the NetBIOS name registered in the printer for the port name.</p> |
| The port Information | <p>The following items are displayed:</p> <ul style="list-style-type: none"> - Port Name (If the port type is changed, the port name and the host name or IP address are also changed.) - Printer Model - Host Name or IP Address - Protocol |
| Finish button | Register the port information to the system and close the Add EpsonNet Print Port Wizard. |
| Back button | Go back to the printer list window. |
| Cancel button | Close the Add EpsonNet Print Port Wizard. |

The new printer port is created in your computer. To install the printer driver, see "Installing the Printer Driver" on page 49.

Adding a port for a printer assigned with a static IP address

1. For Windows 7/Vista/Server 2008: Click **Start**, **Control Panel**, and then **View devices and printers** (Windows 7), or **Printers** (Windows Vista/Server 2008). Click **Add a printer** to start the Add Printer Wizard.

For Windows XP: Click **Start** and then **Printers and Faxes**. Under Printer Tasks, click **Add a printer** to start the Add Printer Wizard. Click **Next**.

For Windows Server 2003: Click **Start** and then **Printers and Faxes**. Double-click **Add Printer** in the Printers folder to start the Add Printer Wizard. Click **Next**.

2. For Windows 7/Vista/Server 2008: Click **Add a local printer**. Select the **Create a new port** radio button, and then select **EpsonNet Print Port** from the list. Click **Next**.

Note:

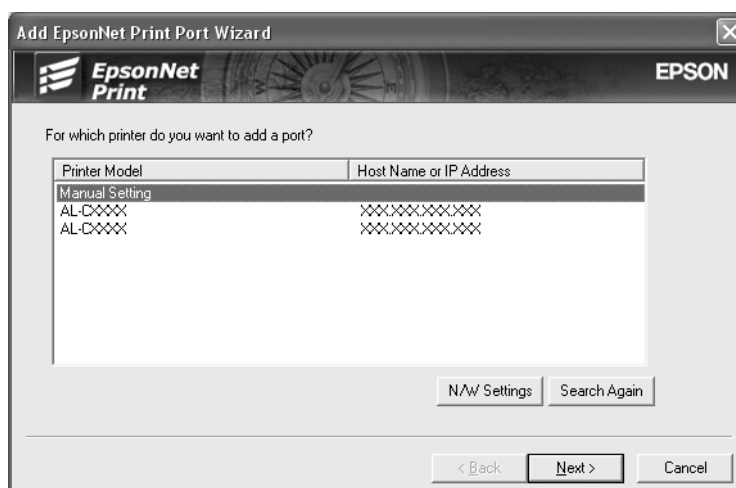
If the Windows Security Alert screen appears, click the **Allow access** or **Unblock** button, and then click the **Search Again** button to search the printers.

For Windows XP/Server 2003: Click **Local printer attached to this computer**, clear the **Automatically detect and install my Plug and Play printer** check box, and then click **Next**. Select the **Create a new port** radio button, and then select **EpsonNet Print Port** from the list. Click **Next**.

Note:

If the Windows Security Alert screen appears, click the **Unblock** button, and then click the **Search Again** button to search the printers.

3. Select **Manual Setting** from the list, and then click **Next**.



4. Enter the printer's name and the port name is automatically entered to the Port Name edit box. Then click **Next**.

5. Confirm the information about the printer's port you want to configure, and then click **Finish**.

| Items | Explanations |
|----------------------|--|
| The port Information | The following items are displayed: <ul style="list-style-type: none"> - Port Name - Host Name or IP Address - Protocol |
| Finish button | Register the port information to the system and close the Add EpsonNet Print Port Wizard. |
| Back button | Go back to the printer list window. |

| Items | Explanations |
|---------------|---|
| Cancel button | Close the Add EpsonNet Print Port Wizard. |

The new printer port is created in your computer. To install the printer driver, see “Installing the Printer Driver” on page 49.

Installing the Printer Driver

Install the printer driver that comes with your printer.

Note:

Some buttons in these steps may be slightly different depending on your operating system.

1. Insert the Software Disc shipped with the printer.
2. Close the Epson Install Navi screen if it appears.
3. On the Add Printer screen, click the **Have Disk** button. The Install From Disk dialog box appears.
4. Click **Browse**.
5. Select the CD/DVD drive for Drives, and double-click the appropriate folder for your operating system. Click **OK**.
6. Click **OK** in the Install From Disk dialog box.
7. Select the model name of the printer, and then click **Next**.

Note:

*If the Add Printer Wizard asks you to select either **Keep existing driver** or **Replace existing driver**, be sure to select the **Replace existing driver** radio button. Click **Next**.*

8. Click **Finish** and follow the on-screen instructions to complete the setup.

The printer is now ready for peer-to-peer printing. To configure the printer port, see “Configuring the Printer Port” on page 49.

Configuring the Printer Port

Follow the steps below to configure the printer port. The printing speed differs depending on your selection.

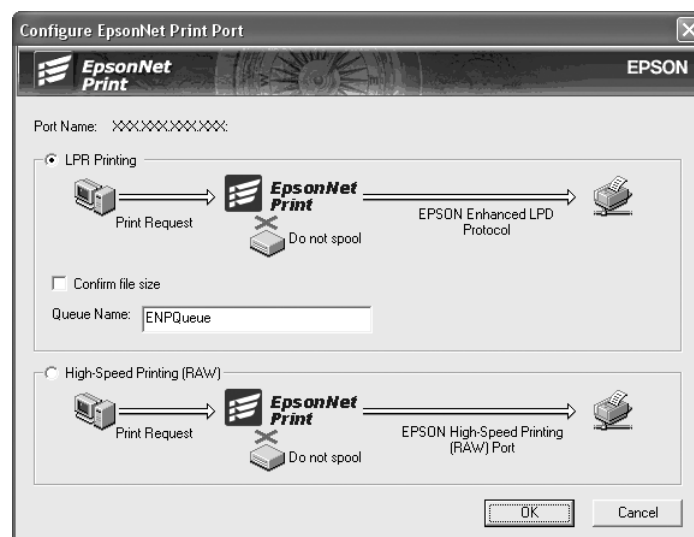
1. **For Windows 7/Vista/Server 2008:**

Click **Start, Control Panel**, and then **View devices and printers** (Windows 7) or **Printers** (Windows Vista/Server 2008).

For Windows XP/Server 2003:

Click **Start** and then **Printers and Faxes**.

2. Right-click the target printer, and then click **Properties**.
3. Click the **Ports** tab, and then click the **Configure Port** button.
4. Make the appropriate settings for the desired port.



LPR enhanced printing:

Select the **LPR Printing** radio button, and then specify the queue name (up to 32 characters). LPR enhanced printing sends a print job to the target network printer without spooling all of the print data. LPR enhanced printing is faster than LPR standard printing.

LPR standard printing:

Select the **Confirm file size** check box, and then specify the queue name (up to 32 characters). Print data is spooled by the computer before being sent to the target network printer.

Note:

When the print data size is 20 MB or more, we recommend that you use LPR enhanced printing.

High-speed printing:

Select the **High-Speed Printing (RAW)** radio button. The Epson high-speed printing port sends a print job to the target network printer without spooling all of the print data. High-Speed printing is faster than the other two printing methods.

5. Click **OK**.

If you select the **High-Speed Printing (RAW)** radio button and if the printer does not support High-Speed printing, or if you fail to connect to the printer, an error message appears. Follow the message to remedy the problem.

Chapter 4

Troubleshooting

General Problems

Cannot configure the network interface or cannot print from the network.

| Cause | What to do |
|--|---|
| The printer settings or network settings may be wrong. | First, check to see if you can print a status sheet, as described in "Printing a Network Status Sheet (Large Format Inkjet Printers)" on page 54. If you can print a status sheet, check the network settings; otherwise, set the interface mode of the printer's control panel to Auto or Option . |

Cannot print even if you have assigned the IP address to the computer and the printer.

| Cause | What to do |
|--|--|
| You have assigned an IP address to the computer manually, but you assigned the IP address to the printer by Automatic Private IP Addressing (APIPA). | Assign the printer's IP address so that it belongs to the same segment of the computer. Use EpsonNet Config and the printer's control panel. |

Unable to start EpsonNet Config.

| Cause | What to do |
|---|---|
| You have added or deleted protocols after installing EpsonNet Config. | Uninstall EpsonNet Config and then reinstall it. See "Installing EpsonNet Config" on page 37. |

The message “EpsonNet Config cannot be used because no network is installed.” appears when you start EpsonNet Config.

| Cause | What to do |
|---|--|
| Both TCP/IP and IPX/SPX are not installed on the computer. | Install the TCP/IP or IPX/SPX protocol. |
| TCP/IP is installed on the computer, but its IP address is not set correctly. | Set a correct IP address for the computer. |

The message “Could not complete communicating configuration data” appears when you send settings to the network interface.

| Cause | What to do |
|--|--|
| This may happen when using a dial-up router. | Run Command Prompt from the computer on which EpsonNet Config is installed, and then enter the following command: Format: >ROUTE_ADD_the IP address of the network interface_ the IP address of the computer (the under bar represents one space) Example: >ROUTE ADD 192.168.192.168 22.33.44.55. |

Unable to start EpsonNet Config with Web Browser.

| Cause | What to do |
|--|---|
| You have not set the IP address for the network interface. | Set the IP address for the network interface using EpsonNet Config for Windows or Macintosh, the printer’s control panel. You can check the IP address on a status sheet. See the EpsonNet Config User’s Guide. |

The Model Name and IP Address do not appear in the EpsonNet Config dialog box.

| Cause | What to do |
|---|--|
| If the valid IP address is not set, the items indicated in the dialog box mentioned above may not appear. | <p>Set a valid IP address.</p> <p>Refresh the status by selecting Refresh from the View menu.</p> <p>Increase the length of time before a timeout. To do this, select Options from the Tool menu, and then select Timeout. Note that doing so can cause EpsonNet Config to run more slowly.</p> |

Printing a Network Status Sheet (Large Format Inkjet Printers)

Before you start configuring the network interface, be sure to print a network status sheet that contains important information such as the current configuration and the MAC address of the network interface.

To print a network status sheet, follow the steps below.

Note:

You cannot print a status sheet using the steps below if your printer does not have an LCD panel. See the User's Guide on how to print the status sheet.

1. Press the **Right** button on the printer's control panel once to enter the Menu mode.
2. Press the **Up** or **Down** button until TEST PRINT appears. Then press the **Enter** button.
3. Press the **Down** button until NETWORK STATUS SHEET appears on the LCD panel. Then press the **Enter** button.
4. Finally, press the **Enter** button to print a network status sheet.

Note:

- You cannot print a status sheet in the following cases: the printer has started printing, it is offline, or it is not ready to print.*
- See the User's Guide for more information on the printer's control panel.*

Chapter 5

Tips for Administrator

Setting an IP Address on the Printer's Control Panel (Large Format Inkjet Printers)

After connecting the printer to the network, you need to set the IP address for the network interface.

To set the IP address, subnet mask, and default gateway from the control panel, follow the steps below.

1. Turn on your printer.
2. Press the **Right** button on the printer's control panel once to display `MENU`.
3. Press the **Down** button until `NETWORK SETUP` appears. Then press the **Right** button.
4. Select `NETWORK SETUP`, then press the **Right** button.
5. Select `ENABLE`, then press the **Enter** button to enable the network settings menu.
6. Press the **Left** button to display the `NETWORK SETUP` menu.
7. Press the **Down** button to select `IP ADDRESS SETTING`, then press the **Right** button. You can use the following methods to get an IP address.
 - Choose `Auto` when getting the IP address from a DHCP server. The IP address is automatically obtained from the DHCP server whenever the printer is reset or turned on.
 - Choose `Panel` when setting the IP address, subnet mask, and default gateway using the printer's control panel.

Note:

- To use **Auto**, a DHCP server must be correctly configured on the network. See the online help of your operating system for detailed instructions.
 - Choose **PING** only when setting the IP address using the `arp/ping` command.
8. Select `PANEL`, then press the **Enter** button. Press the **Left** button to return to the `NETWORK SETUP` menu.

9. Press the **Down** button to select IP, SM, or GW, then press the **Right** button.
10. Press the **Up** or **Down** button on the IP ADDRESS screen until the desired value appears. Then press the **Right** button.
11. Press the **Up** or **Down** button on the SUBNET MASK screen until the desired value appears. Then press the **Enter** button.
12. Press the **Up** or **Down** button on the DEFAULT GATEWAY screen until the desired value appears. Then press the **Enter** button to set the values.
13. Press the **Left** button twice to exit the control panel menus.
14. Turn off your printer and then turn it back on. Be sure to wait until the initialization is complete.

Print a network status sheet to confirm the new IP address.

Note:

- You must first set the IP address before using EpsonNet Config with Web Browser.
- See the User's Guide for more information about settings on the printer's control panel.

Network Setup Menu

These items are used to make network settings on the printer's control panel.

Note:

The available settings vary depending on your printer model.

| Item | Settings |
|---------------------|----------------------------|
| NETWORK SETUP | Disable, Enable |
| IP ADDRESS SETTING* | Auto, Panel, PING |
| IP* | 0.0.0.0 to 255.255.255.254 |
| SM* | 0.0.0.0 to 255.255.255.255 |
| GW* | 0.0.0.0 to 255.255.255.255 |
| AppleTalk* | On, Off |
| MS Network* | On, Off |

| Item | Settings |
|-----------------------|----------|
| Bonjour* | On, Off |
| WSD* | On, Off |
| INIT NETWORK SETTING* | EXECUTE |

* Available only when `Enable` is selected for `NETWORK SETUP`.

Appendix A

Software License Terms

Open Source Software Licenses

Bonjour

This product contains the Apache Software.

Copyright © 2009 SEIKO EPSON CORPORATION

Licensed under the Apache License, Version 2.0 (the “License”);
you may not use this file except in compliance with the License.

You may obtain a copy of the License at
<http://www.apache.org/licenses/LICENSE-2.0>

Unless required by applicable law or agreed to in writing, software distributed under the License is distributed on an “AS IS” BASIS, WITHOUT WARRANTIES OR CONDITIONS OF ANY KIND, either express or implied.

See the License for the specific language governing permissions and limitations under the License.

This product contains the Linux Name Service Switch code.

The Linux Name Service Switch code, contributed by National ICT Australia Ltd (NICTA) is licensed under the NICTA Public Source License version 1.0

NICTA Public Software Licence

Version 1.0

Copyright 2004 National ICT Australia Ltd

All rights reserved.

EXCEPT AS EXPRESSLY STATED IN THIS LICENCE AND TO THE FULL EXTENT PERMITTED BY APPLICABLE LAW, THE SOFTWARE IS PROVIDED “AS IS” AND NICTA MAKES NO REPRESENTATIONS, WARRANTIES OR CONDITIONS OF ANY KIND, EXPRESS OR IMPLIED, INCLUDING, WITHOUT LIMITATION, ANY REPRESENTATIONS, WARRANTIES OR CONDITIONS REGARDING THE CONTENTS OR ACCURACY OF THE SOFTWARE, OR OF TITLE, MERCHANTABILITY, FITNESS FOR A PARTICULAR PURPOSE, NONINFRINGEMENT, THE ABSENCE OF LATENT OR OTHER DEFECTS, OR THE PRESENCE OR ABSENCE OF ERRORS, WHETHER OR NOT DISCOVERABLE.

TO THE FULL EXTENT PERMITTED BY APPLICABLE LAW, IN NO EVENT WILL NICTA BE LIABLE ON ANY LEGAL THEORY (INCLUDING, WITHOUT LIMITATION, NEGLIGENCE) FOR ANY LOSS OR DAMAGE WHATSOEVER, INCLUDING (WITHOUT LIMITATION) LOSS OF PRODUCTION OR OPERATION TIME, LOSS, DAMAGE OR CORRUPTION OF DATA OR RECORDS; OR LOSS OF ANTICIPATED SAVINGS, OPPORTUNITY, REVENUE, PROFIT OR GOODWILL, OR OTHER ECONOMIC LOSS; OR ANY SPECIAL, INCIDENTAL, INDIRECT, CONSEQUENTIAL, PUNITIVE OR EXEMPLARY DAMAGES ARISING OUT OF OR IN CONNECTION WITH THIS LICENCE, THE SOFTWARE OR THE USE OF THE SOFTWARE, EVEN IF NICTA HAS BEEN ADVISED OF THE POSSIBILITY OF SUCH DAMAGES.

If applicable legislation implies warranties or conditions, or imposes obligations or liability on NICTA in respect of the Software that cannot be wholly or partly excluded, restricted or modified, NICTA’s liability is limited, to the full extent permitted by the applicable legislation, at its option, to:

- a. in the case of goods, any one or more of the following:
 - i. the replacement of the goods or the supply of equivalent goods;
 - ii. the repair of the goods;
 - iii. the payment of the cost of replacing the goods or of acquiring equivalent goods;
 - iv. the payment of the cost of having the goods repaired; or
- b. in the case of services:
 - i. the supplying of the services again; or
 - ii. the payment of the cost of having the services supplied again.

Other Software Licenses

Info-ZIP copyright and license

This is version 2007-Mar-4 of the Info-ZIP license. The definitive version of this document should be available at <ftp://ftp.info-zip.org/pub/infozip/license.html> indefinitely and a copy at <http://www.info-zip.org/pub/infozip/license.html>.

Copyright © 1990-2007 Info-ZIP. All rights reserved.

For the purposes of this copyright and license, “Info-ZIP” is defined as the following set of individuals:

Mark Adler, John Bush, Karl Davis, Harald Denker, Jean-Michel Dubois, Jean-loup Gailly, Hunter Goatley, Ed Gordon, Ian Gorman, Chris Herborth, Dirk Haase, Greg Hartwig, Robert Heath, Jonathan Hudson, Paul Kienitz, David Kirschbaum, Johnny Lee, Onno van der Linden, Igor Mandrichenko, Steve P. Miller, Sergio Monesi, Keith Owens, George Petrov, Greg Roelofs, Kai Uwe Rommel, Steve Salisbury, Dave Smith, Steven M. Schweda, Christian Spieler, Cosmin Truta, Antoine Verheijen, Paul von Behren, Rich Wales, Mike White.

Permission is granted to anyone to use this software for any purpose, including commercial applications, and to alter it and redistribute it freely, subject to the above disclaimer and the following restrictions:

1. Redistributions of source code (in whole or in part) must retain the above copyright notice, definition, disclaimer, and this list of conditions.
2. Redistributions in binary form (compiled executables and libraries) must reproduce the above copyright notice, definition, disclaimer, and this list of conditions in documentation and/or other materials provided with the distribution. The sole exception to this condition is redistribution of a standard UnZipSFX binary (including SFXWiz) as part of a self-extracting archive; that is permitted without inclusion of this license, as long as the normal SFX banner has not been removed from the binary or disabled.

3. Altered versions--including, but not limited to, ports to new operating systems, existing ports with new graphical interfaces, versions with modified or added functionality, and dynamic, shared, or static library versions not from Info-ZIP--must be plainly marked as such and must not be misrepresented as being the original source or, if binaries, compiled from the original source. Such altered versions also must not be misrepresented as being Info-ZIP releases--including, but not limited to, labeling of the altered versions with the names "Info-ZIP" (or any variation thereof, including, but not limited to, different capitalizations), "Pocket UnZip," "WiZ" or "MacZip" without the explicit permission of Info-ZIP. Such altered versions are further prohibited from misrepresentative use of the Zip-Bugs or Info-ZIP e-mail addresses or the Info-ZIP URL(s), such as to imply Info-ZIP will provide support for the altered versions.
4. Info-ZIP retains the right to use the names "Info-ZIP," "Zip," "UnZip," "UnZipSFX," "WiZ," "Pocket UnZip," "Pocket Zip," and "MacZip" for its own source and binary releases.

WPA suppliant

Copyright © 2003-2010, Jouni Malinen <j@w1.fi> and contributors.

Redistribution and use in source and binary forms, with or without modification, are permitted provided that the following conditions are met:

1. Redistributions of source code must retain the above copyright notice, this list of conditions and the following disclaimer.
2. Redistributions in binary form must reproduce the above copyright notice, this list of conditions and the following disclaimer in the documentation and/or other materials provided with the distribution.
3. Neither the name(s) of the above-listed copyright holder(s) nor the names of its contributors may be used to endorse or promote products derived from this software without specific prior written permission.

THIS SOFTWARE IS PROVIDED BY THE COPYRIGHT HOLDERS AND CONTRIBUTORS “AS IS” AND ANY EXPRESS OR IMPLIED WARRANTIES, INCLUDING, BUT NOT LIMITED TO, THE IMPLIED WARRANTIES OF MERCHANTABILITY AND FITNESS FOR A PARTICULAR PURPOSE ARE DISCLAIMED. IN NO EVENT SHALL THE COPYRIGHT OWNER OR CONTRIBUTORS BE LIABLE FOR ANY DIRECT, INDIRECT, INCIDENTAL, SPECIAL, EXEMPLARY, OR CONSEQUENTIAL DAMAGES (INCLUDING, BUT NOT LIMITED TO, PROCUREMENT OF SUBSTITUTE GOODS OR SERVICES; LOSS OF USE, DATA, OR PROFITS; OR BUSINESS INTERRUPTION) HOWEVER CAUSED AND ON ANY THEORY OF LIABILITY, WHETHER IN CONTRACT, STRICT LIABILITY, OR TORT (INCLUDING NEGLIGENCE OR OTHERWISE) ARISING IN ANY WAY OUT OF THE USE OF THIS SOFTWARE, EVEN IF ADVISED OF THE POSSIBILITY OF SUCH DAMAGE.

Index

E

| | |
|------------------------------------|----|
| EpsonNet Config (Macintosh)..... | 37 |
| EpsonNet Config (Web Browser)..... | 39 |
| EpsonNet Config (Windows)..... | 36 |
| EpsonNet Print..... | 43 |

I

Installation

| | |
|----------------------------------|----|
| EpsonNet Config (Macintosh)..... | 38 |
| EpsonNet Config (Windows)..... | 37 |
| EpsonNet Print..... | 43 |
| IP address..... | 55 |

O

| | |
|----------------------------|---|
| Operating environment..... | 9 |
|----------------------------|---|

P

| | |
|----------------|---|
| Protocols..... | 9 |
|----------------|---|

R

| | |
|----------------------|----|
| Remote Manager..... | 42 |
| RJ-45 connector..... | 10 |

S

| | |
|-----------------------------|-------------|
| Setting the IP address..... | 39, 42 , 55 |
|-----------------------------|-------------|

U

Using the printer with

| | |
|--------------------------|----|
| Macintosh..... | 34 |
| Windows 7..... | 22 |
| Windows Server 2003..... | 30 |
| Windows Server 2008..... | 22 |
| Windows Vista..... | 22 |
| Windows XP..... | 26 |