

EN Start Here

! Important; must be observed to avoid damage to your equipment.



© 2013 Seiko Epson Corporation. All rights reserved.



Read This First
This product requires careful handling of ink. Ink may splatter when the ink tanks are filled or refilled with ink. If ink gets on your clothes or belongings, it may not come off.

1 Unpacking

Remove all protective materials.

Do not open the initial setup ink bottle package or the refill ink bottle package until you are ready to fill the ink tank. The ink bottle is vacuum packed to maintain its reliability.

For initial setup

2 Filling Ink

The illustrations in this guide may differ from your actual product.

1 Check position.

2 Unhook.

Do not pull the tubes.

10 Connect and plug in.

11 Turn on.

12 Press for 3 seconds until starts flashing. Charging ink is started.

13 Charging ink takes about 20 minutes. Wait until the light turns on.

3 Connecting to the Computer

Do not connect the USB cable until you are instructed to do so.

If the Firewall alert appears, allow access for Epson applications.

1 Insert.

2 Check and proceed.

Windows A

Mac B

A Windows Select and follow the instructions.

B Mac Select and follow the instructions.

Windows 7/Vista: AutoPlay window.

Only the software with a selected check box is installed. **Epson Online Guides** contain important information such as troubleshooting. Install them if necessary.

!

- Use the ink bottles that came with your product.
- Even if some ink bottles are dented, the quality and quantity of ink are guaranteed, and they can be used safely.
- Epson cannot guarantee the quality or reliability of non-genuine ink. The use of non-genuine ink may cause damage that is not covered by Epson's warranties.

3 Open and remove.

4 Snap off, remove, and then install.

Install the ink bottle cap **tightly**; otherwise ink may leak.

5 Match the ink color with the tank, and then fill with **all of the ink**.

Install.

6 Install securely.

7 Repeat steps **3** to **5** for each ink bottle.

8 Close.

9 Hook onto.

Before printing, be sure to hook the ink tank unit onto the product. Do not lay the ink tank unit down, or position the unit higher or lower than the product.

Loading Paper and Copying

1 **2** **3** **4** **5** **6** **7** **8**

Loading Capacity (sheets) for copying

- Do not load paper above mark inside the edge guide.
- Load paper with its printable side face up.

Plain Paper	11 mm	A4
Bright White Ink Jet Paper	80	

Transporting

1 Secure print head.

2 Set transportation lock.

3 Install securely.

4 Make sure to hook on.

5 Without ink bottles, set in original or similar box.

Keep the product level as you transport it. Otherwise, ink may leak. Be sure to keep the ink bottle upright when tightening the cap, and take measures to prevent ink from leaking as you transport it.

After you move it, remove the tape securing the print head and the covers of ink tanks, then set the transportation lock to the unlocked position. If you notice a decline in print quality, run a cleaning cycle or align the print head.

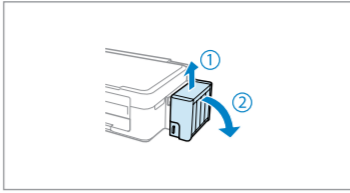
Store the covers at the side of the product.

Refilling Ink

To confirm the actual ink remaining, visually check the ink levels in the product's ink tanks.

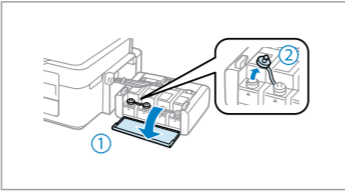
Continued use of the product when the ink level is below the lower line on the tank could damage the product.

1



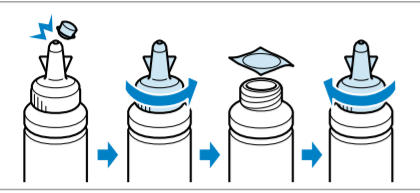
Unhook.

2



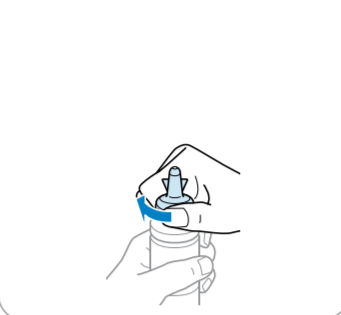
Open and remove.

3

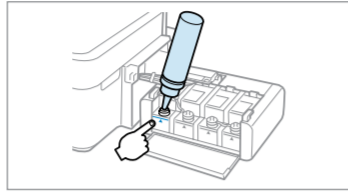


Snap off, remove, and then install.

Install the ink bottle cap **tightly**; otherwise ink may leak.

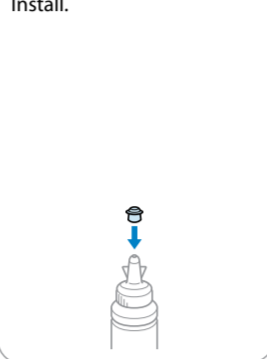


4

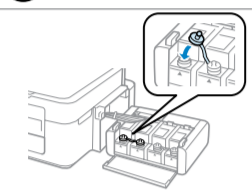


Refill the ink up to the upper line.

Install.

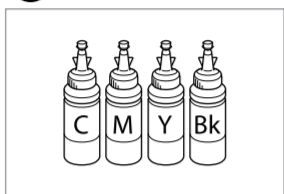


5



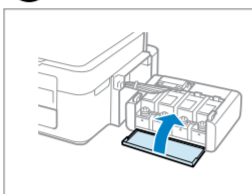
Install securely.

6



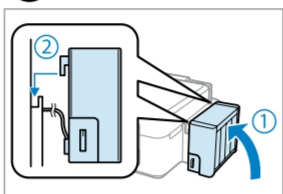
Repeat steps 3 to 5 for each ink bottle.

7



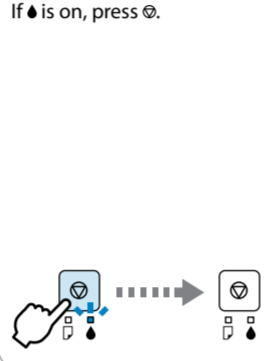
Close.

8



Hook onto.

If is on, press .

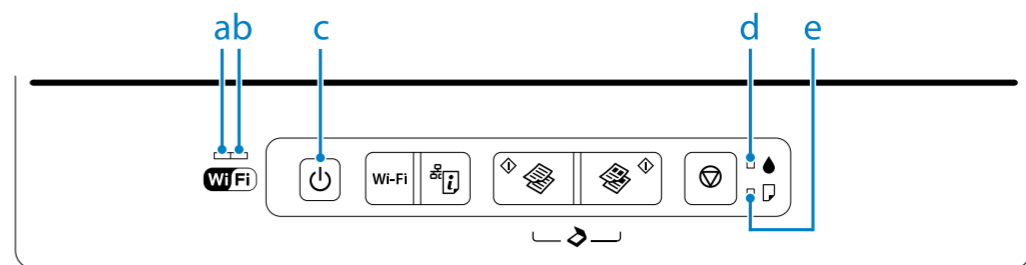


Epson Ink

Color	Part numbers
Black	T6641
Cyan	T6642
Magenta	T6643
Yellow	T6644

Genuine Epson ink, other than those specified here, could cause damage that is not covered by Epson's warranties.

Guide to Control Panel



a	b	c	d	e
Network status light (green)	Network status light (orange)	Power light	Ink light	Paper light

	Wi-Fi	
Turns the product on/off.	Establishes a Wi-Fi connection when pressed for 3 seconds.	Prints a network status sheet.

Starts monochrome or color copy. To increase the number of monochrome or color copies (by up to 20 copies), press the same button within one second intervals. Press both buttons simultaneously to scan your original and save it as PDF on your PC.	Cancels the operation.

Special Operations

	+
To perform print head cleaning, press for 3 seconds until the power light is flashing. The cleaning uses some ink from all tanks, so run the cleaning only if quality declines like when you see missing segments on your prints.	While pressing , turn on the product to print the nozzle check pattern shown below. (a): OK. (b): Needs a head cleaning.
+	+ +
While pressing , turn on the product to return the network settings to their defaults.	While pressing or , press within 3 seconds to copy in draft mode.

Reading the Indication Lights

: flashing

: on

	The paper is jammed in the rear paper feed. Remove the jammed paper from the rear paper feed, load paper correctly, and press or .
	No paper is loaded, or multiple sheets were fed at the same time. Load paper in the rear paper feed correctly and press or .
	It is nearly time to reset the ink levels. Ink level may be low. You may continue printing. However, prepare new ink bottles soon. Epson recommends the use of genuine Epson ink bottles. See the table in the "Refilling Ink" section for the ink bottle part numbers. To confirm the actual ink remaining, visually check the ink levels in the product's ink tanks. Continued use of the product when the ink level is below the lower line on the tank could damage the product.
	It is time to reset the ink levels. Ink level may have reached the lower line. See the "Refilling Ink" section to fill all ink tanks with ink to clear the error.
	Fatal error. Turn the product off and then back on. If this does not clear the error, turn the product off and check inside the product for jammed paper or foreign objects. For instructions on how to remove jammed paper, see the troubleshooting section of the online <i>User's Guide</i> .
	The product's ink pads are nearing or at the end of their service life. Contact Epson Support to replace ink pads. When the product's ink pads are nearing the end of their service life, you can resume printing by pressing or . The paper light and the ink light flash alternately.
	An error occurred while establishing the Wi-Fi connection. Press to clear the error and try again. For more details, see the online <i>Network Guide</i> .
	The firmware update has failed. You will need to re-attempt the firmware update. Ready a USB cable and visit your local Epson website for further instructions.

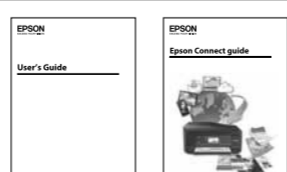
Safety Instructions

Use only the power cord that comes with the product. Use of another cord may cause fire or shock. Do not use the cord with any other equipment.	Place the product near a wall outlet where the power cord can be easily unplugged.	Use only the type of power source indicated on the product.	Make sure the power cord meets all relevant local safety standards.	Do not let the power cord become damaged or frayed.
Keep the product away from direct sunlight or strong light.	Do not open the scanner unit while copying, printing, or scanning.	Do not use aerosol products that contain flammable gases inside or around the product. Doing so may cause fire.	Except as specifically explained in your documentation, do not attempt to service the product yourself.	
Keep ink bottles and the ink tank unit out of the reach of children and do not drink the ink.	Do not tilt or shake an ink bottle after removing its seal; this can cause leakage.	Be sure to keep the ink bottles upright and do not subject them to impacts or temperature changes.	If ink gets on your skin, wash the area thoroughly with soap and water. If ink gets into your eyes, flush them immediately with water. If discomfort or vision problems continue after a thorough flushing, see a doctor immediately. If ink gets into your mouth, spit it out immediately and see a doctor right away.	

Getting More Information



You can see three online manuals. See the *User's Guide* (PDF file) for detailed instructions on using the product.



Your product supports the Epson Connect service. This service allows you to print from your smartphone or tablet to your Epson product.

<https://www.epsonconnect.com/>

