

**EPSON**  
EXCEED YOUR VISION

**EH-TW5100**  
Home Projector

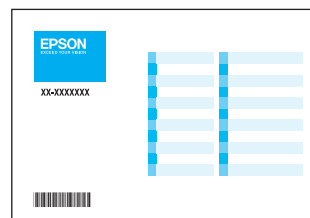
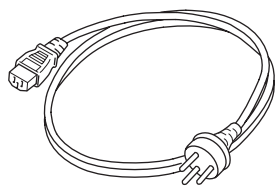
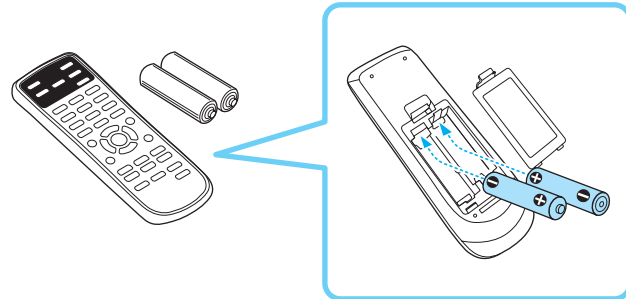
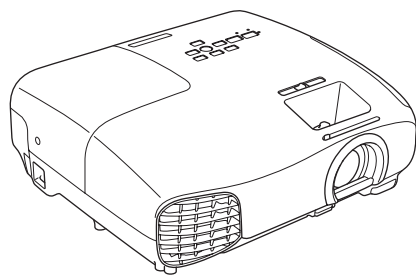


\*412794300\*

EN	Quick Start Guide	SK	Stručná príručka
DE	Kurzanleitung	RO	Ghid de pornire rapidă
FR	Guide de démarrage rapide	EL	Οδηγός γρήγορης εκκίνησης
IT	Guida di avvio rapido	TR	Hızlı Başlangıç Kılavuzu
ES	Guía de inicio rápido	SL	Priložnik za hitri zagon
PT	Guia de Referência Rápida	HR	Kratke upute
NL	Introductiehandleiding	RU	Руководство по быстрой установке
DA	Introduktion	UK	Коротка інструкція "Початок роботи"
FI	Pika-aloitusopas	KK	Қысқа іске қосу нұсқаулығы
NO	Hurtigveiledning	ID	Panduan Ringkas
SV	Snabbstartsguide	AR	دليل البداية السريعة
CS	Úvodní příručka	HE	מדריך להפעלה מהירה
HU	Bevezetés	ZHS	設定手冊
PL	Przewodnik szybkiego startu	ZHT	設定説明書

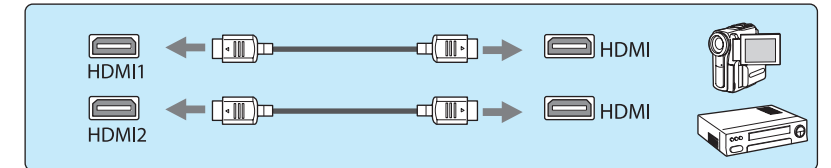
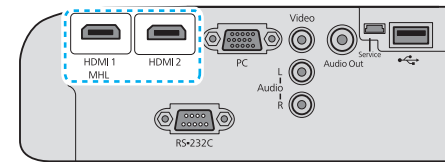


**Unpacking**

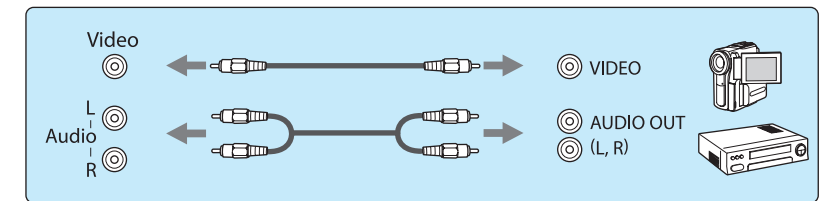
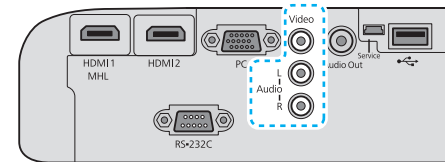


**Connecting**

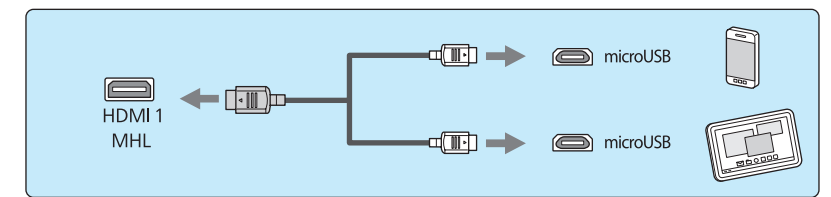
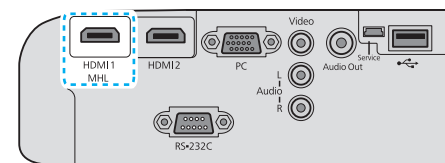
**HDMI Cable**



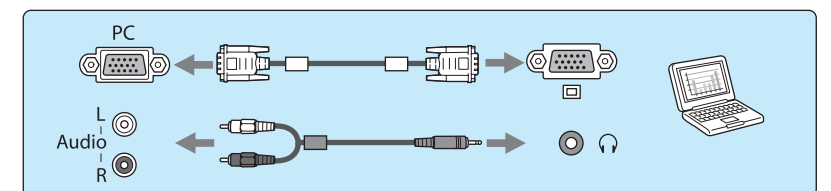
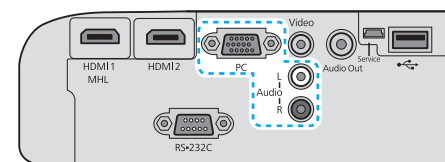
**Video Cable**



**MHL Cable**

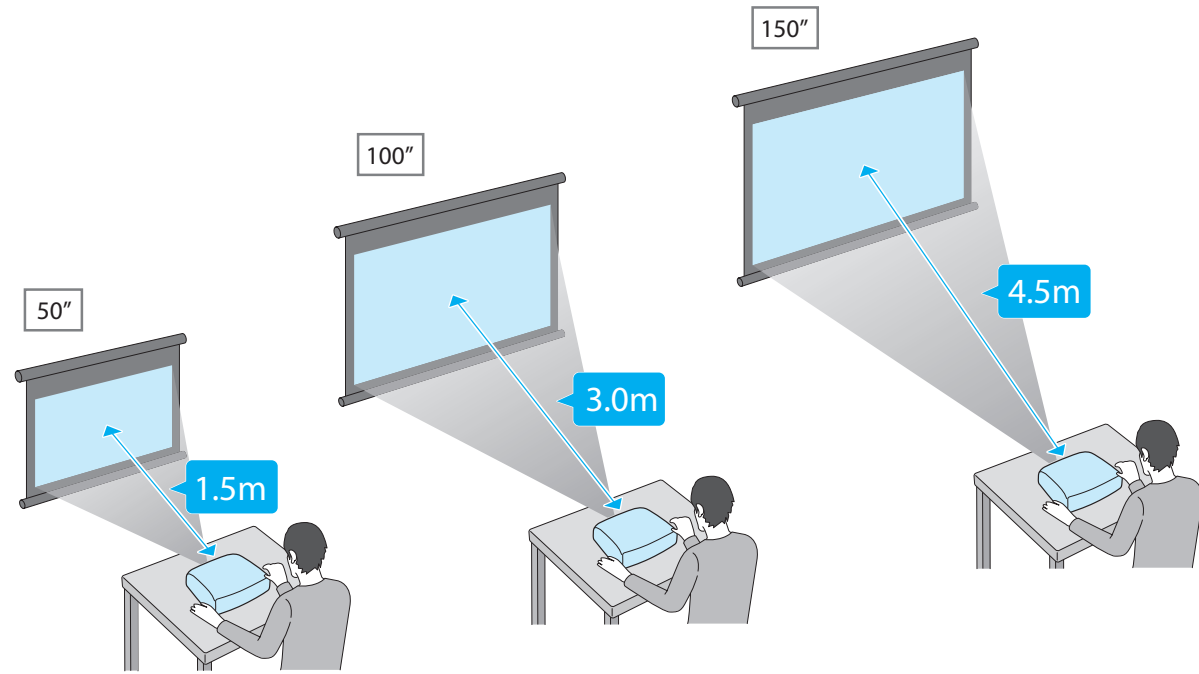


**Computer Cable**

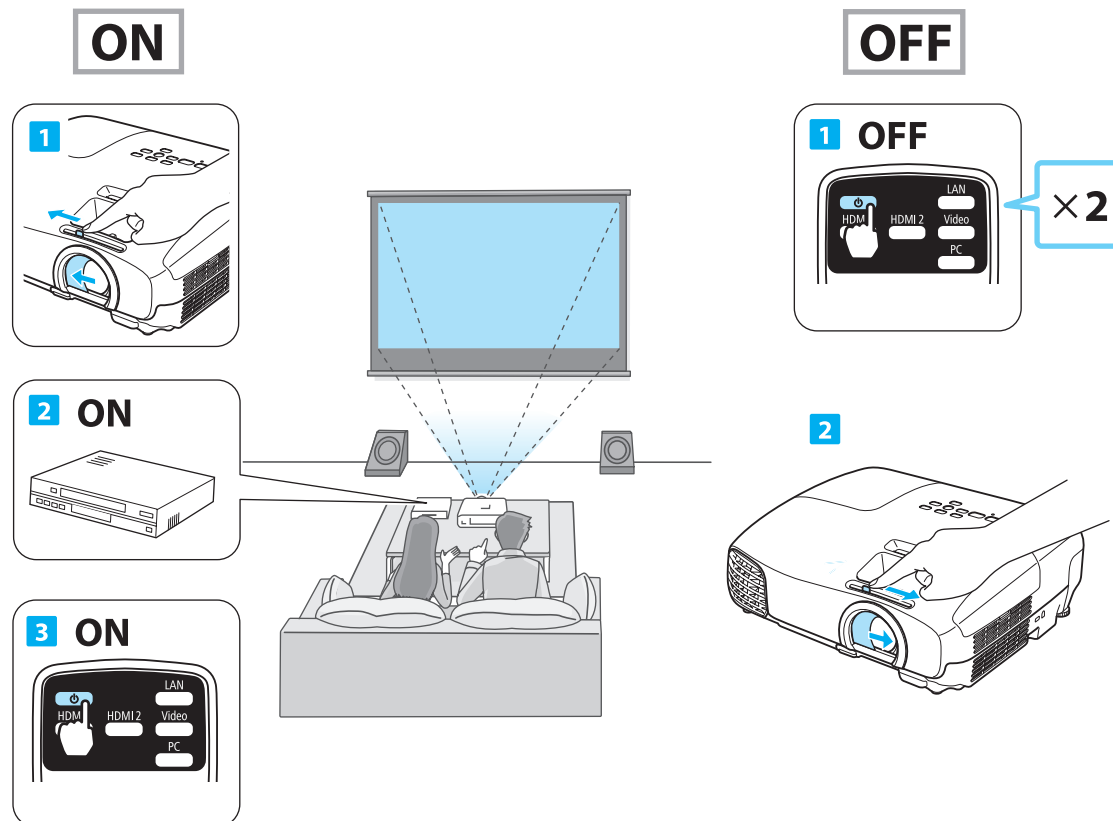


## Setting Up

### 16:9

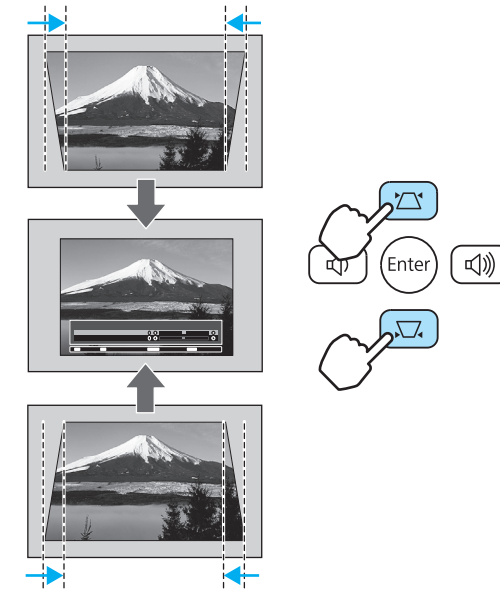


### Turning On/Off

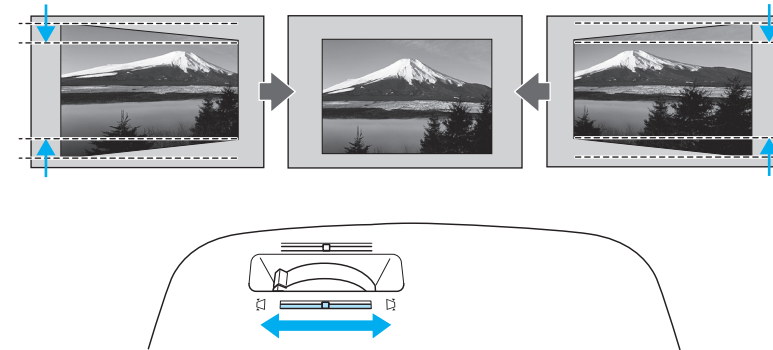


## Adjusting

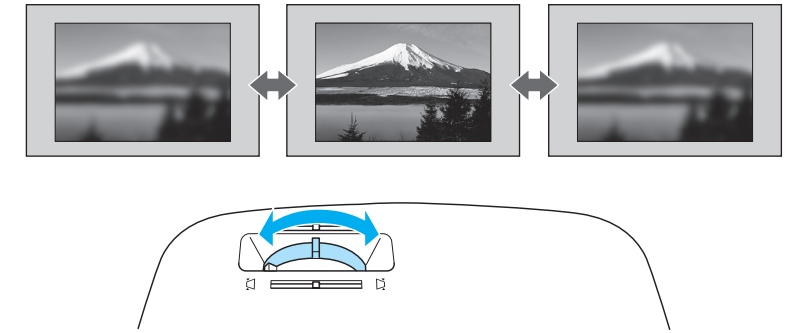
### Adjusting Vertical Keystone



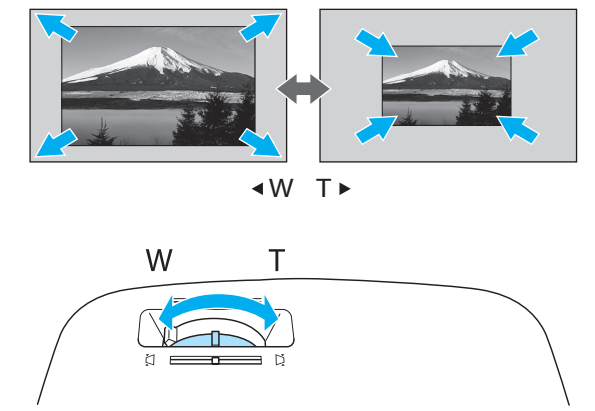
### Adjusting Horizontal Keystone



### Focusing



### Zooming



## For More Information

