

# Notice

---

## *For Microsoft® Windows® Users*

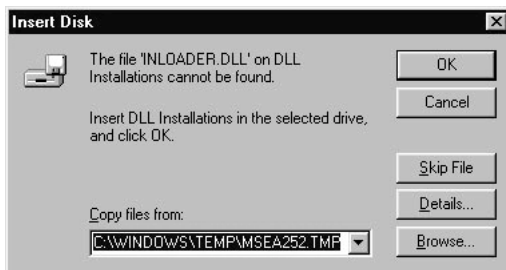
### *Troubleshooting WinFax installation*

An error may occur when you install the WinFax application. To solve this problem, follow the steps below.

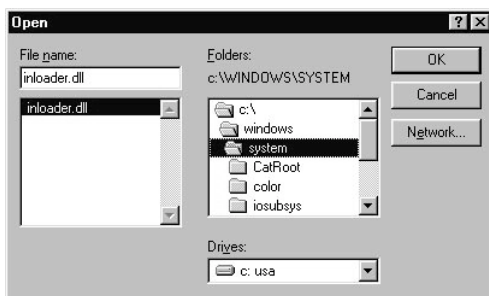
1. If the following message appears, click OK.



2. Click Browse.



3. Open C:\Windows\System and check that inloader.dll is located in the directory. Click OK. If your hard disk drive has a drive letter other than C, substitute the appropriate letter.



---

## ***For Microsoft Windows 2000 users***

### ***Before installing Adobe PhotoDeluxe® and Adobe Acrobat® Reader***

To use the Scan for Creativity function of EPSON SMART PANEL, or to view manuals in the PDF format, EPSON has included the following 2 applications on CD-ROMs. These applications are not guaranteed to be supported on the Windows 2000 operating system by Adobe Systems Incorporated as of December 22, 1999. Please confirm that these applications are supported by Windows 2000 on the Adobe web site (<http://www.adobe.com>) before installing.

- Adobe PhotoDeluxe Business Edition 1.1
- Adobe Acrobat Reader 4.0

If the versions included on the CD-ROMs are supported, please install them. For installation instructions for PhotoDeluxe Business Edition, see the Supplemental Information sheet for the CD-ROMs. To install Acrobat Reader 4.0, open Acrobat\English on the EPSON Stylus Scan Software CD-ROM and double-click Ar40eng.exe, then follow the on-screen instructions.

If the version included on the CD-ROM is not supported, please see the Adobe web site for further information.

---

***For Mac OS 9 users***

The included software cannot be used with the Multiple Users function of Mac OS 9.