



EPSON

Digital Camera Utility Programs

*EPSON Photo!2*  
*EPSON Photo File Uploader*



User's Guide

# EPSON® Photo!2 EPSON® Photo File Uploader

## Digital Camera Utility Programs

All rights reserved. No part of this publication may be reproduced, stored in a retrieval system, or transmitted in any form or by any means, electronic, mechanical, photocopying, recording, or otherwise, without the prior written permission of SEIKO EPSON CORPORATION. No patent liability is assumed with respect to the use of the information contained herein. Neither is any liability assumed for damages resulting from the use of the information contained herein.

Neither SEIKO EPSON CORPORATION nor its affiliates shall be liable to the purchaser of this product or third parties for damages, losses, costs, or expenses incurred by purchaser or third parties as a result of: accident, misuse, or abuse of this product or unauthorized modifications, repairs, or alterations to this product.

SEIKO EPSON CORPORATION and its affiliates shall not be liable against any damages or problems arising from the use of any options or any consumable products other than those designated as Original EPSON Products or EPSON Approved Products by SEIKO EPSON CORPORATION.

EPSON is a registered trademark of SEIKO EPSON CORPORATION.

Microsoft and Windows are registered trademarks of Microsoft Corporation in the United States of America and other countries.

IBM and PS/2 are registered trademarks of International Business Machines Corporation.

Macintosh is a registered trademark of Apple Computer, Inc.

**General Notice:** Other product names used herein are for identification purposes only and may be trademarks of their respective companies.

Copyright © 1999 by SEIKO EPSON CORPORATION, Nagano, Japan.



Printed on Recycled Paper.

## User's Guide

---



---

# Contents

## *Introduction*

---

Features .....	1
About This Guide .....	1
Finding More Information .....	2
System Requirements .....	2
PCs .....	2
Macintosh Computers .....	2

## *Chapter 1 Installing the Software*

---

For Windows Users .....	1-1
Installing EPSON Photo!2 .....	1-1
Installing other software .....	1-2
For Macintosh Users .....	1-3
Installing EPSON Photo!2 .....	1-3
Installing EPSON Photo File Uploader .....	1-3
Installing other software .....	1-4

## *Chapter 2 Using EPSON Photo!2*

---

Connecting the Camera to Your Computer .....	2-1
Connecting to a PC .....	2-2
Viewing Camera Properties (Windows 98 only) .....	2-3
Connecting to a Macintosh .....	2-5
Working with EPSON Photo!2 .....	2-7
Accessing EPSON Photo!2 .....	2-7
Getting information through online help .....	2-8
EPSON Photo!2 menus .....	2-8
Using the Camera Menu .....	2-10
Transferring photos to your computer .....	2-11
Placing photos in your documents .....	2-12
Erasing selected pictures from your camera .....	2-14
Getting photo information .....	2-15
Viewing your photos .....	2-15
Using the Folder Menu .....	2-16
Finding the folder containing your photos .....	2-16
Uploading and copying photos to the camera .....	2-17
Using the Controls Menu .....	2-17
Controlling the camera from your computer .....	2-18
Taking pictures from your computer .....	2-19
Erasing photos .....	2-19
Using the Setup Menu .....	2-20
Changing computer connection settings .....	2-20

Changing camera settings. . . . . 2-21

***Chapter 3 Using the Uploader Utilities***

---

Using EPSON Photo File Uploader. . . . . 3-1  
    Uploading images from your PC. . . . . 3-2  
    Uploading images from your Macintosh. . . . . 3-4  
    Making screen copies . . . . . 3-6  
Using EPSON Program Uploader . . . . . 3-8  
    Uploading programs . . . . . 3-9  
    Removing programs . . . . . 3-10

***Chapter 4 Troubleshooting***

---

Software Problems. . . . . 4-1

***Glossary***

---

***Index***

---

---

# Introduction

---

## Features

The EPSON digital camera software suite, including EPSON Photo!2 and EPSON Photo File Uploader, is the perfect companion for your EPSON digital camera. Using this software along with your digital camera, you can capture images in color, grayscale, or black and white, and save them to disk as files.

- ❑ The software supports the following EPSON digital cameras: EPSON PhotoPC 750Z, PhotoPC 700, PhotoPC 600
- ❑ EPSON Photo!2 directly controls all of the features of your EPSON digital camera, and is the standard cross-platform interface for other application programs.
- ❑ EPSON Photo File Uploader allows you to upload image files stored in your computer, or capture screen shots on the computer screen and save them in the digital camera's memory.
- ❑ EPSON Program Uploader allows you to upload optional programs from the computer to the camera, or delete programs from the camera.

- ❑ You can convert image files into various formats, such as JPEG and TIFF, for use with your favorite desktop publishing and image editing software.

---

## About This Guide

The information in this guide is divided into four chapters, with a glossary and index provided for reference.

- ❑ Chapter 1 contains information on installing the software. Be sure to read this chapter first.
- ❑ Chapter 2 provides you with a complete description of EPSON Photo!2.
- ❑ Chapter 3 explains how to upload images and programs to your EPSON digital camera.
- ❑ Chapter 4 explains how to solve problems you may have while using the software.

*Notes contain important information and useful tips on operating your digital camera and software.*

---

## *Finding More Information*

- Online help also provides information about EPSON Photo!2 settings.
- To set up and use the digital camera, see your *User's Guide*.

---

## *System Requirements*

### *PCs*

486 processor or higher

Serial port with standard RS-232C interface and a communication speed of 19200 bps or higher

16 MB RAM

Hard disk drive with at least 40 MB free space

VGA monitor with at least 16-color display

Microsoft® Windows 95, 98, or NT 3.51 (with Service Pack 3) or later

### *Macintosh Computers*

Power PC processor

Serial port with a communication speed of 19200 bps or higher

16 MB RAM

Hard disk drive with at least 40 MB free space

Monitor with minimum resolution of 640 × 480

Macintosh System 7.1 or later (System 7.5 or later is required to access optional CompactFlash Card memory directly from the Macintosh)

There are two CD-ROMs packed with your camera; one for Windows users and another for Macintosh users. Each contains EPSON Photo!2, EPSON Photo File Uploader, and other optional software.

With EPSON Photo!2, you can transfer your pictures from the camera to your computer, then place them into documents. EPSON Photo File Uploader allows you to convert digital images from the computer to your camera.

This chapter shows you how to install the camera software in your PC or Macintosh.

**Note:**

- ❑ *Be sure to install EPSON Photo!2 first. You cannot install other software before EPSON Photo!2 is installed.*
- ❑ *When you install EPSON Photo!2, the EPSON Program Uploader utility is also installed automatically.*

---

## For Windows Users

### Installing EPSON Photo!2

Follow the steps below to install EPSON Photo!2.

1. Turn on your computer and insert the included CD for Windows in your computer's CD-ROM drive.

If a dialog box appears asking you to select a language, click the appropriate language, then click OK.

2. **For Windows 95, Windows 98, or NT 4.0**  
An introductory screen appears on your monitor. Click the Add Software icon.

#### **For Windows NT 3.5x**

Click the File Manager icon in the Main menu. Then click the CD-ROM drive icon, and double-click Cdsetup.exe.



3. A dialog box with a list of software appears. Any software with a check mark next to it will be installed in your PC. Click a software name to remove or add a check mark.

Make sure there is a check mark next to EPSON Photo!2.

4. Click OK. Then follow the on-screen instructions.
5. After installing EPSON Photo!2, click Finish.

The installation process automatically begins for any software you selected in addition to EPSON Photo!2 in step 3. Follow the on-screen instructions.

### ***Installing other software***

In addition to EPSON Photo!2, your software CD contains other software to expand the capabilities of your camera, such as EPSON Photo File Uploader. Follow the steps below to install the software of your choice. See your software documentation for a description of the available software.

1. Make sure EPSON Photo!2 is already installed. If not, see “Installing EPSON Photo!2” on page 1-1.
2. If necessary, repeat steps 1 and 2 in “Installing EPSON Photo!2” on page 1-1.

3. A dialog box with a list of software appears. Any software with a check mark next to it will be installed on your computer. Click a software name to remove or add a check mark.

Make sure there is a check mark next to EPSON Photo File Uploader and any other software you want to install.

4. Click OK. Then follow the on-screen instructions.
5. After installing EPSON Photo File Uploader, click Finish.

The installation process automatically begins for any software you selected in addition to EPSON Photo File Uploader in step 3. Follow the on-screen instructions.

---

## For Macintosh Users

### Installing EPSON Photo!2

Follow the steps below to install EPSON Photo!2.

1. Turn on the computer, and insert the included CD for Macintosh in the CD-ROM drive.
2. The EPSON folder appears on your computer's desktop. Double-click the EPSON Photo!2 folder.

In some locations, the EPSON Photo!2 folder may contain multiple-language versions of the software. Double-click the folder of your preferred language.

3. Double-click the EPSON Photo!2 Disk 1 icon.
4. Double-click the Photo!2 Installer - Part 1 icon to start the installation program. Follow the on-screen instructions.

### Installing EPSON Photo File Uploader

Follow the steps below to install EPSON Photo File Uploader.

1. Turn on the computer, and insert the included CD for Macintosh in the CD-ROM drive.
2. The EPSON folder appears on your computer's desktop. Double-click the File Uploader folder.

In some locations, the File Uploader folder may contain multiple-language versions of the software. Double-click the folder of your preferred language.

3. Drag-and-drop the contents of the folder to the preferred location of your hard drive to install the software.

## *Installing other software*

Your camera comes with other software to expand the capabilities of your camera. Follow the steps below to install the software of your choice. See your software documentation for a description of the available software.

1. Turn on the computer and insert the CD for Macintosh shipped with your camera in the CD-ROM drive.
2. The EPSON folder appears on your computer's desktop. Double-click the folder that contains the software you want to install.

Some folders may contain multiple-language versions of the software. Double-click the folder of your preferred language.

3. Double-click the installer icon of the program you want to install. Then follow the on-screen instructions.

### Using EPSON Photo!2

Now that EPSON Photo!2 is installed in your computer, you are ready to connect your camera to your computer and transfer the images you shot with your camera to your computer. You can then use your images in letters, presentations, or other documents you create on your computer.

This chapter tells you how to do all these things, as well as how to erase pictures from the camera and upload EPSON Photo images to your camera.

---

#### Connecting the Camera to Your Computer

When the camera is connected to your computer, you cannot use any of the control buttons on the camera, including the shutter button. You can only operate the camera through your computer.

**Note:**

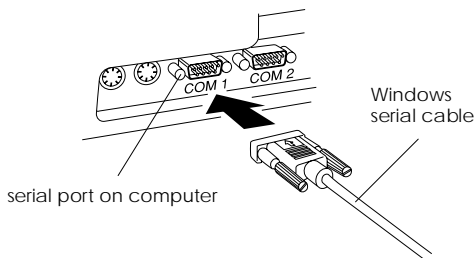
*You can save battery power by using the optional AC adapter whenever you connect the camera to your computer.*

The camera's automatic shut-off feature remains in effect when the camera is connected to your computer. Shut-off takes place after five minutes of inactivity. To turn the camera back on, turn off the camera and reset its dial switch to Play (for PhotoPC 750Z), or close and reopen the lens cover or use any of your software's camera controls (for PhotoPC 600/700).

## Connecting to a PC

To connect the camera to a PC, you need the Windows serial cable. Follow the steps below.

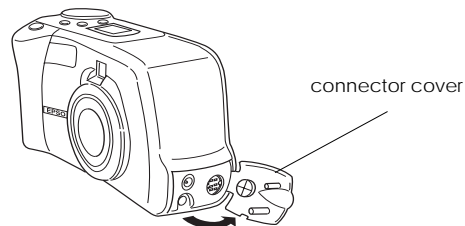
1. Make sure the camera and your computer are turned off. If your camera has an LCD monitor, make sure it is off.
2. Plug the cable connector into the serial port on your computer. Then tighten the screws.



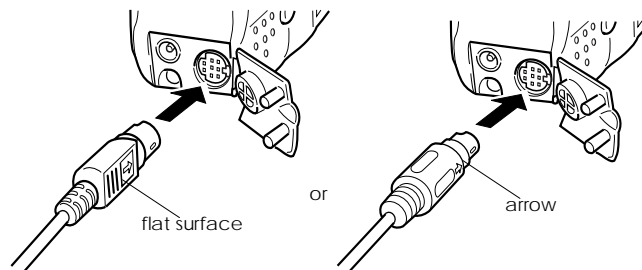
### **Note:**

*If you have more than one port available, use COM1 or the similarly labelled port.*

3. Open the connector cover on the side of the camera.



4. Depending on the type of cable you have, line up either the arrow or the flat surface of the cable connector with the mark on the camera's serial port. Then insert the connector.



5. Turn the camera's dial switch to Play (for PhotoPC 750Z), or turn the camera on (for PhotoPC 600/700). Then turn on your computer.

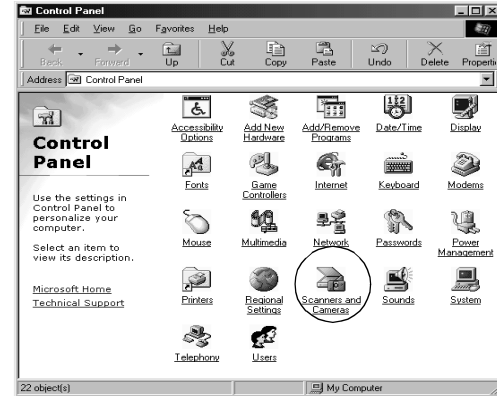


**Caution:**

*Keep your camera and computer away from potential sources of electromagnetic interference, such as loudspeakers or base units of cordless telephones.*

## Viewing Camera Properties (Windows 98 only)

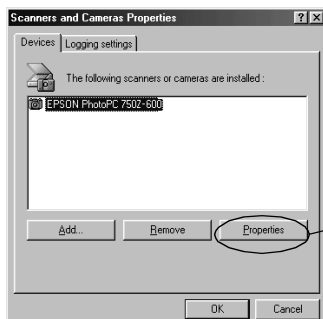
With EPSON Photo!2 installed on your computer, you can easily check your camera's properties when it is connected to your computer. You can access these properties from either the Scanners and Cameras icon or the System icon in the Control Panel.



### From the Scanners and Cameras icon

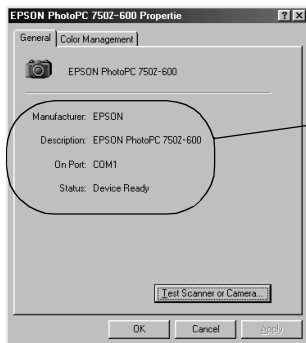
To open the Control Panel dialog box, click the Start button, point to Settings and click Control Panel. Double-click the Scanners and Cameras icon on the Control Panel.

The following dialog box appears. To see the properties of your EPSON PhotoPC, click the Properties button.



Click here.

The General menu appears, showing the type, manufacturer, and current status of your camera.

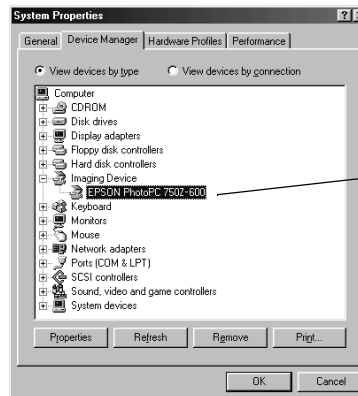


General information about your camera appears.

You can test the connection between your camera and computer with the Test Scanner or Camera button. However, EPSON recommends clicking the Test Connection button in EPSON Photo!2's Setup menu to test the connection. For details, see "Using the Setup Menu" on page 2-20.

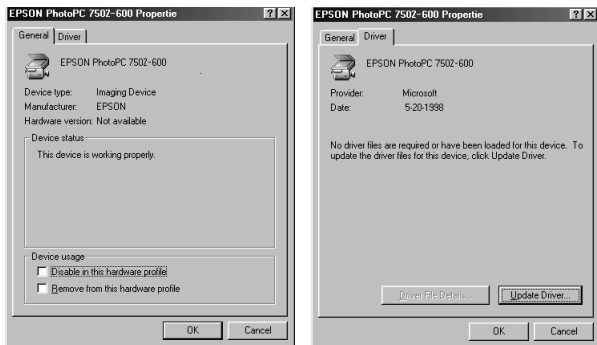
### From the System icon

To open the Control Panel dialog box, click the Start button, point to Settings and click Control Panel. Click the System icon on the Control Panel. Then click the Device Manager tab in the System Properties dialog box.



The name of the camera you have installed in the computer appears.

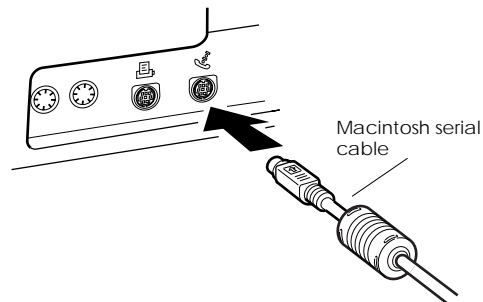
Click the camera name or the Properties button to see camera properties and driver information.



## Connecting to a Macintosh

To connect the camera to a Macintosh, you need the Macintosh serial cable. Follow the steps below.

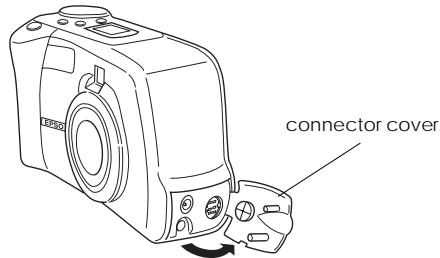
1. Make sure the camera and your computer are turned off. If your camera has an LCD monitor, make sure it is off.
2. Plug the serial connector on the cable into the modem port or the printer port on your computer.



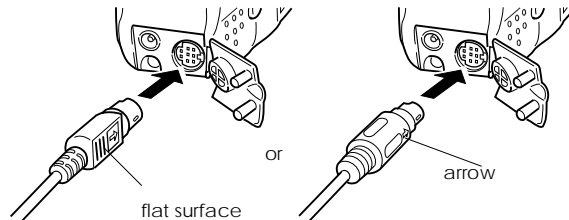
2



3. Open the connector cover on the side of the camera.



4. Depending on the type of cable you have, line up either the arrow or the flat surface of the cable connector with the mark on the camera's serial port. Then insert the connector.



5. Turn the camera's dial switch to Play (for PhotoPC 750Z), or turn the camera on (for PhotoPC 600/700). Then turn on your computer.

**Note:**

*Make sure AppleTalk is inactive for the port that you use to connect your camera. Otherwise, the computer may not recognize your camera.*



**Caution:**

*Keep your camera and computer away from potential sources of electromagnetic interference, such as loudspeakers or the base units of cordless telephones.*

---

## Working with EPSON Photo!2

Once your camera and computer are connected and turned on, you are ready to start working with EPSON Photo!2. If you have not yet installed EPSON Photo!2, see Chapter 1 to install it.

### **Note:**

*If you do not set your camera's clock before connecting it to the computer, the camera's time and date is automatically set to that of the computer's after opening EPSON Photo!2.*

## Accessing EPSON Photo!2

There are two ways to access EPSON Photo!2 to download your photos to your computer. Before accessing EPSON Photo!2, make sure your camera's dial switch is set to Play (for PhotoPC 750Z), or your camera is on (for PhotoPC 600/700).

### **Note for PhotoPC 750Z users:**

*When you turn the dial switch to Play, the camera's LCD monitor comes on. Wait until the monitor displays a full image before accessing EPSON Photo!2.*

## Opening EPSON Photo!2 directly

*For Windows 95, 98 and NT 4.0 users*

Click Start, point to Programs, point to EPSON Photo!2 Ver.2, then click EPSON Photo!2 Ver. 2.

*For Windows NT 3.51 or Macintosh users*

Double-click the EPSON Photo!2 icon in the EPSON Photo!2 program group or folder.

## Opening EPSON Photo!2 from an application program

*From a TWAIN-compliant application*

Choose EPSON PhotoPC 750Z-600 (for Windows) or PhotoPC 750Z-600 (for Macintosh) as the TWAIN data source on your application's File menu, then acquire an image.

*From an OLE2-compliant application (Windows only)*

From an application that supports OLE2 (object linking and embedding), choose EPSON PhotoPC 750Z-600 Object on the Insert Object menu and click OK.

**Note:**

- ❑ *The process for accessing EPSON Photo!2 from TWAIN or OLE2-compliant applications may vary slightly depending on your software.*
- ❑ *Refer to your software documentation for detailed instructions on selecting TWAIN data sources or inserting OLE objects.*

## Getting information through online help

EPSON Photo!2's online help can answer most of your questions about this software.

To access online help, click the Help button on any of the EPSON Photo!2 menus for help related to the items on that menu. Alternatively, click Start, point to Programs, point to EPSON Photo!2 Ver.2, then click EPSON Photo!2 Ver.2 (for Windows 95, 98, and NT 4.0), double-click the Photo!2 Help icon in the EPSON Photo!2 folder (for Macintosh), or program group (for Windows NT 3.51).

## EPSON Photo!2 menus

There are four menus in the EPSON Photo!2 dialog box; Camera, Folder, Controls, and Setup.

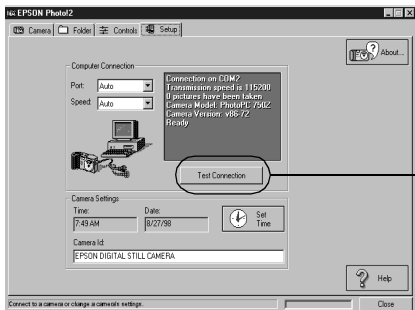
When you open EPSON Photo!2, the Camera menu appears, indicating your camera and computer are connected properly.



**Note:**

*While the camera and the computer are communicating, star icons move across the camera's display panel. Avoid opening or using other applications during this time; otherwise, communication may be interrupted.*

If the Setup menu appears when you open EPSON Photo!2, your camera and computer may not be connected properly.



After checking the connection between the camera and computer, click here.

Connect the camera to your computer and make sure your camera's dial switch is set to Play (for PhotoPC 750Z), or your camera is on (for PhotoPC 600/700). Then click the Test Connection button.

### **Note for PhotoPC 750Z users:**

*When you turn the dial switch to Play, the camera's LCD monitor comes on. Wait until the monitor displays a full image before clicking the Test Connection button. After communication between the camera and computer is established, the camera's LCD monitor turns off.*

If you still cannot open the Camera menu, see "Using the Setup Menu" on page 2-20 to establish a proper connection.

## **Camera menu**

Displays small thumbnail images of all the photos stored your the camera. You can transfer any image to the computer or erase it from the camera.

If an optional CompactFlash Card is installed in the camera, the Camera menu displays the images stored in the card instead of the images stored in the camera's internal memory. To display the images stored in the camera, remove the CompactFlash Card from the camera.

## **Folder menu**

Displays thumbnail images of photos that have been saved to a folder on your hard disk. Select images to transfer them to an application, or erase them from the folder. You can also upload these images from your computer to your camera.

## **Controls menu**

Displays camera settings such as image quality and flash control. You can change some of the camera settings, and also take pictures using the Live Preview window on your computer.

**Note for PhotoPC 750Z users:**

Turn the camera's dial switch to **On** before starting **EPSON Photo!2**. If the camera is in **Play mode**, the **Live Preview** and the **Take a Picture** buttons are disabled.

## Setup menu

Displays the current status of communication between your camera and the computer. You can change the communication settings if needed, and also set the camera's internal time and date.

---

## Using the Camera Menu

When you open **EPSON Photo!2**, the **Camera** menu appears and starts downloading thumbnail images of the photos stored in your camera. The images are downloaded in the order that they were taken and are displayed in the image selection window. To change the downloading order, click the blank thumbnail frames of the photos you want to see first.

If an optional **CompactFlash Card** is installed in the camera, the **Camera** menu displays the images stored in the card instead of the images stored in the camera's internal memory.

**Note:**

If a message appears indicating that the camera is not connected properly, make sure the serial port is working, and that the port setting in the **Setup** menu matches the port you are using. To change the port setting, see "Changing the communication port" on page 2-20.



image selection window

## Transferring photos to your computer

There are two ways to transfer, or save, your pictures to your computer. The Save To Folder button creates a JPEG file that is named automatically. The Export Photos button lets you name the file yourself and save it as a JPEG, BMP, PCX, or PICT (for Macintosh only) file.

### Using the Save To Folder button

Follow the steps below to save photos with the Save To Folder button.

1. Make sure EPSON Photo!2 is open. See “Accessing EPSON Photo!2” on page 2-7.
2. Click the thumbnails of the images you want to save in the image selection window, or click the Select All button to save all the photos in your camera.

**Note:**

*To rotate an image, select the image and click one of the rotation buttons.*

3. Click the Save To Folder button.
4. Select a folder in the dialog box, then click Save. Your photos will be saved to the folder you selected.

### Using the Export Photos button

The Export Photos button is only available when you open EPSON Photo!2 directly. Follow the steps below to save photos with this button.

1. Open EPSON Photo!2 by clicking its icon.
2. In the Camera menu, click the thumbnails of the images you want to save, or click the Select All button to save all the photos in your camera.

**Note:**

*To rotate an image, select the image and click one of the rotation buttons.*

3. Click the Export Photos button.

**Note:**

*If you want to improve the image quality of your photos, select the Photo Enhance check box before clicking Export Photos. Transferring takes a longer time when using this feature.*

4. Select a folder in which to save your photo, specify a file name, and select a file format in the dialog box. Then click Save.

## *Placing photos in your documents*

You can use your pictures in many different types of applications, such as word processors, presentation programs, spreadsheets, database managers, page layout and desktop publishing packages.

If your application supports OLE2 (such as Microsoft Word 6.0 & 7.0 and WordPerfect® 6.1) or TWAIN (such as HotShots, Photoshop, PicturePublisher and Photostyler), you can directly transfer your photos from your camera to your documents.

If your application does not support OLE2 or TWAIN, you need to save your photos as JPEG, BMP, PCX, or PICT (for Macintosh) files, and then open them from within your application.

If you are not sure whether your application supports OLE2 or TWAIN, give it a try. If it does not work, you can always insert the photo by first saving it and then opening it from your application.

## *Inserting photos directly into documents*

You can add pictures directly to your documents with the Get Photo button (or the Get Photos button), or you can use the drag-and-drop method (Windows only).

### **Note:**

*Depending on the application you use, the Get Photo button may appear as the Get Photos button.*

## *Using the Get Photo (or Get Photos) button*

Following is a typical procedure for directly transferring a photo to an OLE2 or TWAIN-compliant application.

1. Start your word processor or other application.
2. Open the document or file where you want to use the photo.
3. Position the cursor where you want to insert the photo.
4. For OLE2-compliant applications, choose Object from the Insert menu and double-click EPSON PhotoPC 750Z-600 Object in the Object Type list box.

For TWAIN-compliant applications, select EPSON PhotoPC 750Z-600 (or PhotoPC 750Z-600 for Macintosh) as the TWAIN data source, then acquire the image.

**Note:**

*The process for accessing EPSON Photo!2 from TWAIN or OLE2-compliant applications may vary depending on your software. Please refer to your software documentation for detailed instructions.*

5. In the EPSON Photo!2 Camera menu, click the thumbnail of the image you want to use, then click the Get Photo button. A copy of the picture appears in your document.

**Note:**

- If you want to rotate an image, select the image and click one of the rotation buttons.*
- If you want to improve the image quality of your photos, select the Photo Enhance check box before clicking Get Photo. Transferring takes a longer time when using this feature.*

*Using drag-and-drop (Windows only)*

Following is a typical procedure for transferring a photo to any Windows application that supports OLE2 (object linking and embedding).

1. Make sure EPSON Photo!2 is open.
2. Start your word processor or other application.

3. Open the document or file where you want to use the photo.
4. Arrange your screen so that both the application window and the EPSON Photo!2 window can be seen.
5. In the EPSON Photo!2 Camera menu, click the thumbnail of the image you want to use.

**Note:**

- If you want to rotate an image, select the image and click one of the rotation buttons in the Camera menu.*
- If you want to improve the image quality of your photos, select the Photo Enhance check box before clicking Get Photos. Transferring takes a longer time when using this feature.*

6. Drag the photo from the Camera menu to your document. After a few seconds you will see the drop cursor. If your application does not support drag-and-drop, the drop cursor will not appear.
7. Position the drop cursor in your document and release the mouse button. A copy of the photo appears in your document.



## *Inserting a picture by importing*

If your application program does not support OLE2 or TWAIN, you need to export your photos to a folder, and open them from your application. Follow these steps to insert a picture by importing.

1. Open EPSON Photo!2 by clicking its icon.
2. Click the thumbnail of the image you want to use.

### **Note:**

*If you want to rotate an image, select the image and click one of the rotation buttons in the Camera menu.*

3. Click the Export Photos button. A dialog box appears in which you can select a folder, specify a file name, select a file format, and save the photos. You can save photos in JPEG, BMP, PCX, or PICT (for Macintosh only) format.

### **Note:**

- If you want to improve the image quality of your photos, select the Photo Enhance check box before clicking Export Photos. Transferring takes a longer time when using this feature.*
- If more than one photo is selected when you click Export Photos, a number will be added automatically to the end of each file name.*

4. Start your application and open the document or file where you want to use the photo.
5. Position the cursor where you want to insert the photo.
6. Choose the Insert Picture or Import File command. The command name may vary depending on your application. It may appear on the File menu, the Insert menu, or another menu.
7. Enter the file name in the box that appears, or use the list to locate and select your photo.
8. Click OK. The photo appears in your document.

## *Erasing selected pictures from your camera*




You can erase selected images from your camera, as described below.

1. Click the thumbnails of the images you want to erase, or click the Select All button to erase all the photos in your camera.
2. Click the Erase Photos button. A dialog box appears asking you to confirm that you want to erase these photos.
3. Click Yes. The images you selected are erased.

If any of the photos are locked, a dialog box appears asking you whether you want to leave the photos in your camera or erase them. Click Yes to leave the photos in your camera, or click No to erase them.

## Getting photo information

You can see an enlarged view of any thumbnail in the selection window by clicking the Photo Info button. The image of the selected thumbnail is shown in double-size, along with following information

- Date and time the photo was taken
- Image size
- Digital Zoom rate
- Image Quality (HyPict, Super-fine, Fine, or Standard)
- Flash state 
- Macro state 
- Locked state 
- Camera model
- Camera ID

You can also see this enlarged view and information by clicking the image with the right mouse button when running Windows, or on the Macintosh by clicking the image while the control key is pressed.

### **Note:**

*The Photo Info button is disabled when multiple images are selected.*

## Viewing your photos

You can see a much larger view of any thumbnail in the selection window by clicking the View Photo button or double-clicking the thumbnail. The photo's number in the camera and its dimensions are displayed above the image view area.

The size of the photo will be one-half the width and height of your monitor's screen resolution. For example, if your monitor is set to 800 × 600 mode, the view of the photo will be 400 × 300 in normal mode and 400 × 150 in panorama mode.

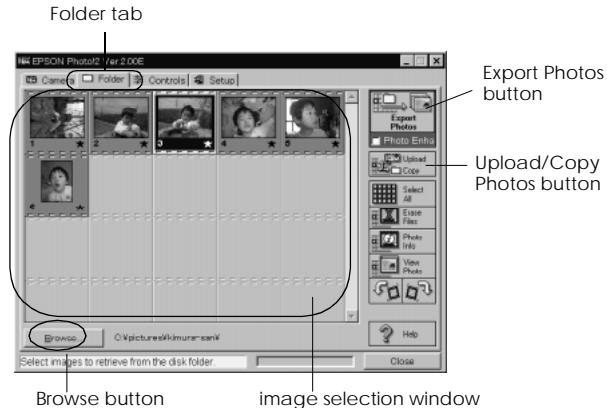
### **Note:**

*The View Photo button is disabled when multiple thumbnails are selected.*

---

## Using the Folder Menu

Click the Folder tab to open the Folder menu. Thumbnails of the images in the selected folder appear in the image selection window. The name of the selected folder appears below the selection window.



As in the Camera menu, you can transfer images from the Folder menu to your documents. To do so, follow the steps in “Placing photos in your documents” on page 2-12, clicking the thumbnails in the Folder menu instead of the Camera menu.

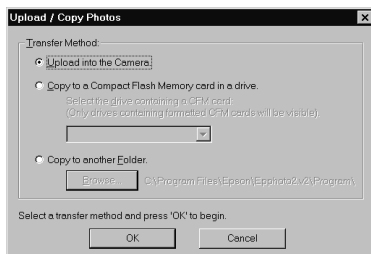
The major difference between the Folder menu and the Camera menu is that in the Folder menu you can open a dialog box with the Browse button to find the folder containing the images you downloaded or saved. Also, you can upload images saved in EPSON Photo file format from your computer to your camera using the Upload Photo button.

### Finding the folder containing your photos

Click the Browse button to open a dialog box that allows you to locate the folder containing the images you downloaded from your camera. Select the folder where you stored the photos and click OK.

## Uploading and copying photos to the camera

Click the Upload/Copy Photos button to upload selected photos to the camera or optional CompactFlash memory card (for Windows only) installed in your computer. You can also copy photos to another folder with this button. The following dialog box appears after clicking this button.



Uploaded or copied images are added to the camera, to the memory card, or to another folder in the order they appear in the Folder menu's image selection window.

### Note:

Image files that were not originally downloaded from the camera using the Save To Folder button or converted to EPSON Photo file format cannot be uploaded or copied using this button. For instructions on converting files to EPSON Photo file format, see "Using EPSON Photo File Uploader" on page 3-1.

## Using the Controls Menu

Click the Controls tab to open the Controls menu. This menu allows you to see a live preview on your computer screen, take photos from your computer, and change camera settings.

When the camera is not connected to your computer, this menu is not accessible. See "Connecting the Camera to Your Computer" on page 2-1 to connect your camera.



### Note for PhotoPC 750Z users:

Turn the camera's dial switch to On before starting EPSON Photo!2.

## Controlling the camera from your computer

You can change camera settings by using the Control Options box in the Controls menu, just as you would use the control buttons on the top of the camera. When the camera is connected to the computer, you cannot use any buttons on the camera itself other than the power switch (or the dial switch for PhotoPC 750Z).

The display panel on the computer and the display panel on the camera are updated whenever the image quality setting, flash mode, or picture count changes.

### Selecting the image quality setting

Click anywhere inside the Mode box to select an image quality setting.

	PhotoPC 600	PhotoPC 700	PhotoPC 750Z
Standard	640 × 480 pixels		
Fine	1024 × 768	1280 × 960	
Super Fine	1024 × 768	1280 × 960	
HyPict	Not available		1600 × 1200
Monochrome Fine	1024 × 768	1280 × 960	
Monochrome Super Fine	1024 × 768	1280 × 960	
Monochrome HyPict	Not available		1600 × 1200

### Note for PhotoPC 750Z users:

If you turn the HyPict mode OFF using the LCD monitor on the camera, the HyPict and Monochrome HyPict modes do not appear in the Mode list box and cannot be selected.

You can switch freely between these settings and mix pictures of varying image quality in the camera. Keep in mind that the camera's picture capacity will vary accordingly. See your camera's *User's Guide* for more information on the image quality settings.

### Selecting the flash mode

Use the arrow in the Flash box to select one of following flash mode settings.

Off, Automatic, Forced

See your camera's *User's Guide* for details.

### Setting the self timer

Select the Self Timer check box to activate the self timer. See your camera's *User's Guide* for more information.

### Selecting macro mode

Select the Macro check box to turn on the macro mode. See your camera's *User's Guide* for details on the macro mode.

## Taking pictures from your computer

You can take pictures from your computer using the camera's viewfinder to set up your shot, and you can see a live preview of the shot on your computer screen before you capture it. This live preview feature works somewhat like a video camera, except the image moves more slowly.

Follow these steps to take pictures from the computer.

1. If your camera is the PhotoPC 750Z, make sure its dial switch is set to On.
2. Position the camera facing the subject. Use a tripod for maximum flexibility in setting up your shots.
3. Click the Start button in the Live Preview box to display your image in the Live Preview window.

### **Note:**

- ❑ *The live preview feature consumes much battery power, so use of the optional AC adapter is recommended. See your camera's User's Guide for more information on using the AC adapter.*
- ❑ *You cannot turn off the camera when you are using live preview. Click the Stop button to turn off the live preview feature, and then turn off the camera.*

4. Click the Take a Picture button to take a picture. The status light beside the viewfinder on your camera flashes red and the camera beeps.
5. When the light stops flashing and turns green, the image is saved and you can take another picture.

The live preview image will be updated every few seconds for the amount of time specified in the Auto-Stop Timer list as follows:

30 Seconds, 1 Minute (default setting),  
3 Minutes, 5 Minutes

This feature helps save battery power.

## Erasing photos

To erase the last picture you took, click the Erase Last button.

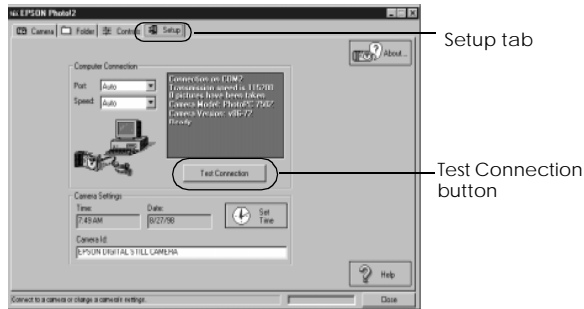
To erase all the photos in your camera, click the Erase All button.

A message appears asking you to confirm your command. Click Yes to execute the erase, or No to cancel.

---

## Using the Setup Menu

Click the Setup tab to display the Setup menu. This menu allows you to make computer connection settings and a few camera settings, such as the date and time. You can also test the connection between your camera and the computer from this menu.



## Changing computer connection settings

You can change settings for communication between your computer and camera with the Port and Speed options. You can also test the connection and establish communication by clicking the Test Connection button. Connection information appears in the Computer Connection window.

### Note:

- ❑ If your camera is PhotoPC 750Z, make sure camera's dial switch is set to Play.
- ❑ Do not change the Port and Speed settings from Auto unless you know the configuration of the serial port you want to use. If you change the Port and Speed settings, you may lose the connection between the camera and your computer.

## Changing the communication port

You can change the communication port used to connect the camera to your computer. When Auto is selected, EPSON Photo!2 automatically selects the port used to connect the camera and the computer.

### For Windows

Select Auto or any available COM port, such as COM1 or COM2.

### For Macintosh

Select Auto, Modem Port, or Printer Port.

## Changing the communication speed

You can change the speed at which EPSON Photo!2 communicates with the camera. When Auto is selected, EPSON Photo!2 automatically selects the fastest possible communication speed. The following speeds are available.

Auto, 19200, 38400, 57600, 115200, and 230400 bps.

### Note:

- ❑ For Windows, the 230400 bps speed is only available if your PC has a high-speed serial interface and driver.
- ❑ For Macintosh, the 115200 and 230400 bps speeds are only available in System 7.5.3 or higher.

## Checking the current status of the camera

The Computer Connection window displays the current status of the camera and its connection to the computer. If there is a problem with the connection, EPSON Photo!2 provides information in this window to help you solve the problem.

If you get an error message in the Computer Connection window:

1. Make sure that both Port and Speed are set to Auto.

2. Make sure that the cable is connected correctly, as described in “Connecting the Camera to Your Computer” on page 2-1.
3. Make sure the camera’s dial switch is set to Play (for PhotoPC 750Z), or your camera is on (for PhotoPC 600/700), and the batteries have enough power.
4. Make sure the serial port used to connect the camera is enabled and properly configured on your computer.
5. Click the Test Connection button to confirm the connection between your camera and the computer.

## Changing camera settings

You can see the camera's internal time and date settings in the Time and Date fields, and you can change these settings using the Set Time button. You can also change the name used to identify your camera in the Camera Id box.

### Setting the clock

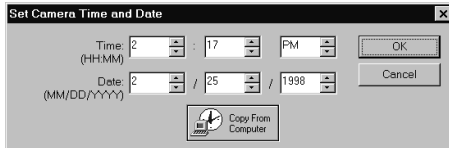
Your camera can record the time and date of your pictures automatically. When you transfer pictures from the camera to your computer, you can see exactly when each shot was taken.



In order to have the time and date recorded, you need to set the camera's clock using the camera's LCD monitor, or by using the Set Time feature described below. The camera's clock will continue to keep time accurately as long as power is being supplied to your camera. If your batteries run out, you must replace them within 30 minutes to avoid losing the time settings in your camera.

Follow these steps to set the camera's clock.

1. Click the Set Time button. The Set Camera Time and Date dialog box appears.



2. Use the arrows to change the time and date. If you want to set your camera to your computer's time and date, click the Copy From Computer button.
3. Click OK. EPSON Photo!2 updates the time and date in your camera.

## Changing the camera ID

If you want to change the name that is used to identify the camera when it is connected to a computer, simply type a new name into the Camera Id box. The camera name appears on the introductory screen when you start EPSON Photo!2 and in the About dialog box. You can also see your camera ID by clicking the Photo Info button.

### *Using the Uploader Utilities*

Your camera comes with two uploader utility programs that allow you to upload images and optional programs from your computer to your camera. This chapter teaches you how to use these programs and includes an explanation of how to capture screen shots of your computer desktop.

---

#### *Using EPSON Photo File Uploader*

The EPSON Photo File Uploader software included on the CD-ROM shipped with your camera allows you to convert any JPEG or BMP image to EPSON Photo file format, and upload it to your camera or to a CompactFlash memory card.

You can also use this software to make and save “screen shots” of everything displayed on the computer screen. Use this feature to turn any of the documents you create, for example PowerPoint presentations, into image files that you can upload to the camera or to a memory card.

You can upload images in the following sizes.

PhotoPC 750Z/ 700:	640 × 480, 1280 × 960 or 1280 × 480 pixel
PhotoPC 600:	640 × 480, 1024 × 768 or 1024 × 384 pixel

**Note:**

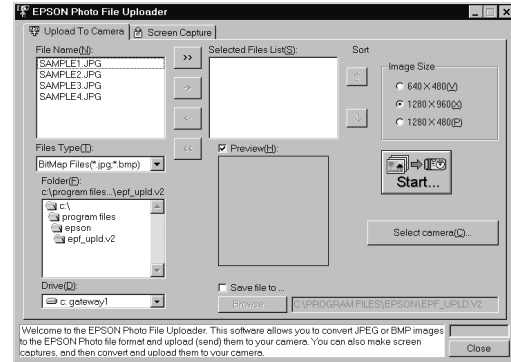
*EPSON Photo File Uploader automatically converts images from their original size to whichever of these three sizes you choose.*

To use EPSON Photo File Uploader, you need to install the program in your computer along with the EPSON Photo!2 software. If you have not yet installed these programs, do so now, following the instructions in “Installing the Software” on page 1-1.

### **Uploading images from your PC**

Follow these steps to upload images to your camera from a PC running Windows 95, Windows 98, or Windows NT versions 3.51 or 4.0.

1. Make sure EPSON Photo!2 is not open on your computer. Connect your camera to the computer.
2. Turn the camera’s dial switch to Play (for PhotoPC 750Z), or turn the camera on and make sure its LCD monitor is turned off (for PhotoPC 600/700).
3. Open your EPSON Photo File Uploader program. The Upload To Camera menu appears.



4. Select a file type from the File Type list, and select the folder containing the images you want to upload from the Drive list and Folder list. Then double-click your selected folder. File names appear in the File Name box.

**Note:**

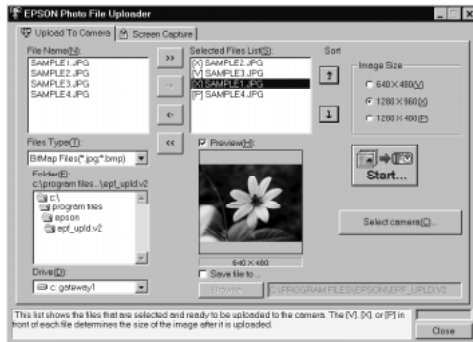
*To upload images from a network drive, you may need to map the drive before opening EPSON Photo File Uploader.*

5. Select the images you want to upload in the File Name list. Then click the -> button. If you want to upload the images in the list all at once, simply click the >> button.

The selected files appear in the Selected Files List in the order they will be uploaded. If you want to change your selection, click the <- button to remove selected files or click the << button to remove all the files from the Selected Files List. These function buttons are disabled when several files are selected.

If you want to rearrange the uploading order, select the image you want to rearrange, then click the ↑ or ↓ Sort arrow.

6. For each file in the Selected Files List, select an image size from the Image Size box.



During the uploading process, EPSON Photo File Uploader converts your files to EPSON Photo file format with the image sizes you specified.

7. If you want to save copies of the converted files on your computer, check the Save file to check box before uploading the photos. Click Browse, then select the folder where you want to save the files.
8. Click OK. The folder you selected is displayed to the right of the Browse button.

If you want to upload photos to your camera, click the Select camera button. The Select Camera Type window appears. Highlight your camera type and click Select, then click Start to start uploading the photos.

### Note:

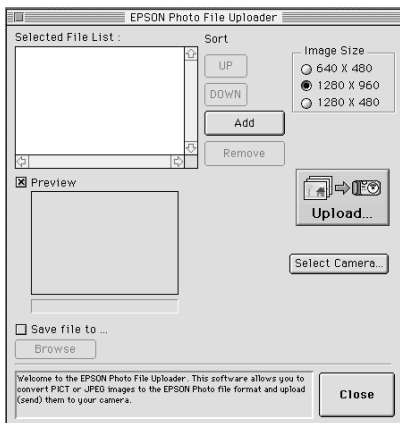
If you want to preview a selected image and confirm its size, select the Preview check box.

If you selected the Save file to check box in the EPSON Photo File Uploader window, the converted images are also saved to the folder you specified.

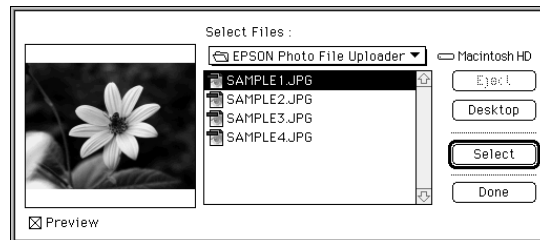
## Uploading images from your Macintosh

You need System 7.1 or later to upload images to your camera from your Macintosh.

1. Make sure EPSON Photo!2 is not open on your computer. Connect your camera to the computer.
2. Turn your camera's dial switch to Play (for PhotoPC 750Z), or turn your camera on and make sure its LCD monitor is turned off (for PhotoPC 600/700).
3. Double-click the EPSON Photo File Uploader icon. The EPSON Photo File Uploader dialog box appears.



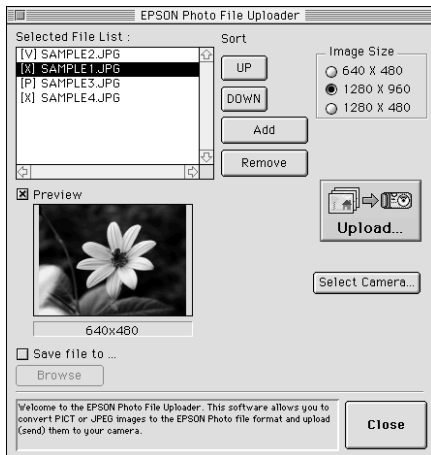
4. Click Add. The Select Files dialog box appears. Double-click the folder containing the images you want to upload, then select each file you want to upload and click Select.



When you finish selecting image files, click Done to close the Select Files dialog box. The selected images appear in the Selected Files list in the order they will be uploaded.

If you want to remove files from this list, select the files and click Remove.

- For each file in the Selected Files List, select an image size in the Image Size box.



During the uploading process, EPSON Photo File Uploader converts your files to EPSON Photo file format in the image sizes you specified.

- If you want to save copies of the converted files on your computer, check the Save file to check box before uploading the photos. Then click Browse and select the folder where you want to save the files.

- Click OK. The folder you selected is displayed to the right of the Browse button.

If you want to upload photos to your camera, click the Select camera button. The Select Camera Type window appears. Highlight your camera type and click Select, then click Start to begin uploading the photos.

**Note:**

If you want to preview a selected image and confirm its size, select the Preview check box.

If you selected the Save file to check box in the EPSON Photo File Uploader window, the converted images are also saved to the folder you specified.

## Making screen copies

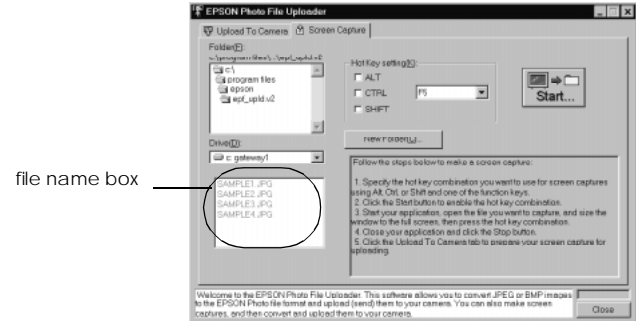
If you want to upload to your camera a document that is not saved as a standard image file, you can turn the document into an image file by making a copy, or a “screen shot,” of the things that appear on your computer screen.

### For Windows users

You can take screen shots using EPSON Photo File Uploader. Follow the steps below.

1. Make sure EPSON Photo!2 is not open on your computer. Connect your camera to the computer.
2. Turn your camera on and make sure its LCD monitor is turned off (for PhotoPC 750Z, turn the camera’s dial switch to Play).
3. Open your EPSON Photo File Uploader program.

4. Click the Screen Capture menu tab. The Screen Capture menu appears.



5. Select the folder containing the images you want to upload using the Drive list and Folder list. Then double-click the folder where you want to save the screen capture. File names appear in the file name box.

If you need to create a new folder for the images, click **New Folder** and name a folder.

### **Note:**

*To select a folder located on a network drive, you may need to map the drive before opening EPSON Photo File Uploader.*

6. Specify the key combination you want to use for screen captures using the Hot Key settings box. Select the ALT, CTRL, or SHIFT check box, then select a key from the hot key list. The default hot key is the F5 key.
7. Click Start to register the key combination. When the key combination is registered, the Start button will change to a Stop button. The key combination remains registered only for the current session. Pressing the Stop button erases the hot key combination.
8. Start your application and open the file you want to capture, then press the hot key combination you selected.

You can make as many screen captures as you like; simply open each file you want to capture and press your screen capture key combination again.

**Note:**

*File names are created automatically.*

9. When you are finished making screen captures, close your application and click the Stop button in the Screen Capture menu. The key combination you selected is erased.

If you want to upload your screen captures to the camera right away, click the Upload To Camera menu tab. The screen capture files appear in the file name box. To upload the screen shots, follow the uploading directions in “Uploading images from your PC” on page 3-2.

### *For Macintosh users*

EPSON Photo File Uploader for the Macintosh does not have a screen shot feature. However, you can make screen shots using your Macintosh system software, then use EPSON Photo File Uploader to upload the screen shots to your camera.

The instructions below are representative of many Macintosh computers, but the procedure may be different depending on your Macintosh. See your computer documentation for detailed instructions on making screen shots.

Follow these steps to make screen shots on your Macintosh.

1. Make sure EPSON Photo!2 is not open on your computer. Connect your camera to the computer.
2. Turn the camera’s dial switch to Play (for PhotoPC 750Z), or turn the camera on and make sure its LCD monitor is turned off (for PhotoPC 600/700).



3. Double-click the EPSON Photo File Uploader icon. The EPSON Photo File Uploader window appears.
4. Start your application and open the file you want to capture, then press SHIFT+COMMAND+3 on your computer keyboard. Your Macintosh names and saves the screen shot on your hard drive.

You can make as many screen shots as you like; simply repeat this step.

5. When you are finished making screen shots, close your application.

To upload your screen shots to the camera, click the EPSON Photo File Uploader window to make it active, then follow the uploading instructions in “Uploading images from your Macintosh” on page 3-4.

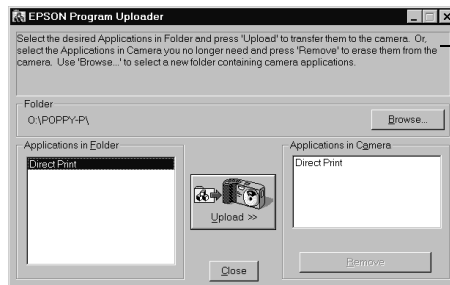
---

## Using EPSON Program Uploader

The EPSON Program Uploader utility allows you to upload optional programs from your PC or Macintosh to your camera. You can upload up to ten programs to PhotoPC 750Z, or five programs to PhotoPC 600 or PhotoPC 700.

### Note:

- ❑ *EPSON Program Uploader is installed automatically when you install EPSON Photo!2.*
- ❑ *When uploading optional programs, the number of pictures you can store in your camera's internal memory decreases.*
- ❑ *You can also upload optional programs from CompactFlash memory cards. See your User's Guide for instructions.*



This area provides helpful information on the operation and use of the optional program.

## Uploading programs

Follow these steps to upload optional programs to the camera.

### **Note:**

You can also upload programs by using the Software menu in the camera's LCD monitor menus. See your User's Guide for instructions.

1. Make sure EPSON Photo!2 is not open on your computer. Connect your camera to the computer.
2. Turn the camera's dial switch to Play (for PhotoPC 750Z) or turn the camera on and make sure its LCD monitor is turned off (for PhotoPC 600/700).
3. If there are any photos in the camera's internal memory, transfer the ones you want to save to your computer or to a CompactFlash Card. Then erase all the photos from the camera.



### **Caution:**

*Make sure to erase all photos from the camera's memory before uploading an optional program. Otherwise, the camera may not work properly.*

4. Click or double-click the EPSON Program Uploader icon in the EPSON Photo!2 program group or folder. The EPSON Program Uploader window appears.

### **Note:**

*If an error dialog box appears indicating the camera is not properly connected to the computer, check the cable connection and make sure the camera's dial switch is set to Play (for PhotoPC 750Z) or that the camera is turned on (for PhotoPC 600/700). Then click OK.*

5. Click Browse and select the folder that contains the programs you want to upload.
6. Select the programs you want to upload from the Applications in Folder list.
7. Click Upload. EPSON Program Uploader begins uploading the selected programs.  
  
When the uploading process is finished, the uploaded programs appear in the Applications in Camera list.
8. Click Close to close the program.

Now you can use the programs in your camera. See your User's Guide for instructions on opening the programs.

## Removing programs

Follow these steps to remove optional programs from the camera.

**Note:**

*You can also remove programs by using the Software menu in the camera's LCD monitor menus. See your User's Guide for instructions.*

1. Make sure EPSON Photo!2 is not open on your computer. Connect your camera to the computer.
2. Turn the camera's dial switch to Play (for PhotoPC 750Z) or turn the camera on and make sure its LCD monitor is turned off (for PhotoPC 600/700).
3. Click or double-click the EPSON Program Uploader icon in the EPSON program group or folder. The EPSON Program Uploader window appears.

**Note:**

*If an error dialog box appears indicating the camera is not properly connected to the computer, check the cable connection and make sure the camera's dial switch is set to Play (for PhotoPC 750Z) or that the camera is turned on (for PhotoPC 600/700). Then click OK.*

4. Click the programs you want to remove in the Applications in Camera list.

5. Click Remove. A confirmation message appears.
6. Click OK. The selected programs are removed from the camera and from the Applications in Camera list.
7. Click Close to close the program.

# Troubleshooting

Your camera's software is easy to use, and any problems you may have can be solved quickly and easily.

See the following section to solve problems with EPSON Photo!2.

---

### Software Problems

#### **The EPSON Photo!2 Setup menu appears instead of the Camera menu when you connect the camera to your computer and open EPSON Photo!2.**

Make sure the cable is connected correctly, as described in “Connecting the Camera to Your Computer” on page 2-1.

Make sure the camera's dial switch is set to Play (for PhotoPC 750Z) or you camera is turned on (for PhotoPC 600/700) and the batteries have enough power.

Check the serial port settings on the Setup menu of your EPSON Photo!2 software. You may need to change the Port and Speed serial connection settings to Auto.

Check that the port to which your camera is connected is properly configured, and that the Base I/O port address and the Interrupt Request Number (IRQ) assigned to the port are not in conflict with other devices.

If you are using a Macintosh, and the camera is sharing a serial port with another device, make sure AppleTalk is inactive.

**An error message appears when you are using EPSON Photo!2 with the camera connected to the computer.**

Make sure the cable is connected correctly, as described in “Connecting the Camera to Your Computer” on page 2-1.

Make sure the camera’s dial switch is set to Play (for PhotoPC 750Z) or you camera is turned on (for PhotoPC 600/ 700) and the batteries have enough power.

Check the serial port settings on the Setup menu of your EPSON Photo!2 software. You may need to change the Port and Speed serial connection settings to Auto.

Avoid opening or working with applications unrelated to the photo transfer process while the camera and computer are communicating.

**Note:**

*While the camera and computer are communicating, star icons move across the camera's display panel.*

---

# Glossary

## ***application***

A software program that helps you carry out a particular task, such as word processing or financial planning.

## ***black and white***

Images represented only by the intensity of luminosity.

## ***BMP***

A Windows file format for storing image data.

## ***bps (bits per second)***

A measure of data transmission speed.

## ***default***

A value or setting that takes effect when the equipment is turned on, reset, or initialized. Also known as a factory setting.

## ***drag-and-drop***

Method for moving an on-screen object by holding the pointer over the object, pressing and holding the mouse button, dragging the mouse, then releasing the mouse button to drop the object in a new location.

## ***grayscale***

Images represented with various shades of gray in addition to black and white.

## ***interface***

The connection between the computer and the camera.

## ***JPEG***

A file format for storing color and grayscale images in compressed files. Data in JPEG files receives greater compression than TIFF and other formats.

## ***OLE***

A way to transfer and share information between Windows-based applications.

## ***PCX***

A file format for storing color and grayscale images.

## ***PICT***

A file format widely used for Macintosh graphics.

## ***pixel***

Short for picture element. Each image is composed of a number of pixels. Pixels are also counted in units of dots.

## ***port***

An interface channel through which data is transmitted between devices.

## ***resolution***

Indication of how finely an image is resolved into pixels. Often measured in dots per inch (dpi) or pixels per inch (ppi).

## ***thumbnails***

Small representations of images.

## ***TWAIN***

A type of interface protocol that makes input peripherals, such as scanners or digital cameras, easier to access directly from application programs.



---

# Index

## A

### Accessing

- EPSON Photo!2, 2-7 to 2-8
- EPSON Photo File Uploader, 3-2, 3-4
- EPSON Program Uploader, 3-9
- Online help, 2-8

### Activating the shutter, 2-19

### Adjusting camera settings

- flash, 2-18
- image quality, 2-18
- macro, 2-18
- self timer, 2-18

### Auto shut-off, 2-1

### Auto-stop timer, 2-19

## B

### Buttons

- Browse, 2-16
- Copy From Computer, 2-22
- Erase All, 2-19
- Erase Last, 2-19
- Erase Photos, 2-14
- Export Photos, 2-11, 2-14, 2-16
- Get Photo, 2-12
- Get Photos, 2-12
- Photo Info, 2-15
- rotation, 2-11, 2-13, 2-14
- Save To Folder, 2-11, 2-17

### Set Time, 2-21, 2-22

### Start, 2-19

### Take a Picture, 2-19

### Test Connection, 2-20, 2-21

### Upload/Copy Photos, 2-16, 2-17

### View Photo, 2-15

## C

### Cables, 2-2, 2-5

### Camera ID, 2-15, 2-22

### Camera menu, 2-9, 2-10 to 2-15

### Clock setting, 2-21 to 2-22

### CompactFlash Cards

#### installing programs from, 3-8

#### uploading photos to, 2-17

### Computer connection settings, 2-20 to 2-21

### Connecting the camera

#### to a Macintosh, 2-5 to 2-6

#### to a PC, 2-2 to 2-3

### Controlling the camera from the computer, 2-17 to 2-19

### Controls menu, 2-9, 2-17 to 2-19

### Copying photos, 2-17

## D

### Date and time setting, 2-22



- E**
- EPSON Photo!2
    - accessing, 2-7 to 2-8
    - installing, 1-1 to 1-2, 1-3
    - using, 2-7 to 2-22
  - EPSON Photo File Uploader, 3-1 to 3-8
    - installing, 1-2, 1-3
    - making screen copies, 3-6 to 3-8
    - Preview option, 3-3, 3-5
    - uploading images, 3-1 to 3-5
    - Upload To Camera menu, 3-2 to 3-3
  - EPSON Program Uploader
    - installing, 1-1
    - using, 3-8 to 3-10
  - Erasing photos, 2-14 to 2-15, 2-19
- F**
- Finding the folder containing your photos, 2-16
  - Flash settings, 2-18
  - Folder menu, 2-9, 2-16 to 2-17
- H**
- Help, 2-8
- I**
- Image quality settings, 2-18
  - Image selection window, 2-10, 2-16
  - Inserting a picture by importing, 2-14
  - Inserting photos into your documents, 2-12 to 2-13
  - Installing
    - EPSON Photo!2, 1-1 to 1-2, 1-3
    - EPSON Photo File Uploader, 1-2, 1-3
    - EPSON Program Uploader, 1-1, 3-8
    - optional programs in the camera, 3-9
    - optional software in your Macintosh, 1-4
    - optional software in your PC, 1-2
- L**
- Live preview, 2-19
- M**
- Macro mode settings, 2-18
  - Making screen copies, 3-6 to 3-8
  - Menus
    - Camera, 2-9, 2-10 to 2-15
    - Controls, 2-9, 2-17 to 2-19
    - EPSON Photo!2, 2-8 to 2-10
    - Folder, 2-9, 2-16 to 2-17
    - Setup, 2-10, 2-20 to 2-22
- P**
- Photos
    - copying, 2-17
    - finding the folder containing photos, 2-16
    - getting information on, 2-15
    - inserting into your documents, 2-12 to 2-13
    - rotating, 2-11, 2-13, 2-14
    - saving to a folder, 2-11
    - transferring to your computer, 2-11
    - uploading to the camera, 2-17
    - viewing, 2-15

## Pictures

- erasing, 2-14 to 2-15
- inserting by importing, 2-14
- taking from the computer, 2-19

Port option, 2-20

Ports, 2-2, 2-6

Problems, 4-1 to 4-2

## R

Removing programs, 3-10

Rotating photos, 2-11, 2-13, 2-14

## S

Saving photos to a folder, 2-11

Screen Capture menu, 3-6 to 3-7

Self timer settings, 2-18

Setup menu, 2-10, 2-20 to 2-22

Shutter, activating from the computer, 2-19

Speed options, 2-21

System requirements, 2

## T

Taking pictures from your computer, 2-19

Test Connection button, 2-20

Transferring photos to your computer, 2-11

Troubleshooting, 4-1 to 4-2

## U

Uploader utilities

- EPSON Photo File Uploader, 3-1 to 3-8

EPSON Program Uploader, 3-8 to 3-10

Uploading

images, 3-1 to 3-5

photos, 2-17

programs to the camera, 3-9

## V

Viewing

camera properties, 2-3 to 2-5

photo information, 2-15

photos, 2-15

## EPSON OVERSEAS MARKETING LOCATIONS

---

**EPSON AMERICA, INC.**

20770 Madrona Ave.  
P.O. Box 2842  
Torrance, CA 90509-2842  
Phone: (800) 922-8911  
Fax: (310) 782-5220

**EPSON UK LTD.**

Campus 100, Maylands Avenue,  
Hemel Hempstead, Herts,  
HP2 7TJ, U.K.  
Phone: (+44) 01442 261144  
Fax: (+44) 01442 227227

**EPSON DEUTSCHLAND GmbH**

Zilpicher StraÙe 6,  
40549 D. sseldorf Germany  
Phone: (0211) 56030  
Fax: (0211) 5047787

**EPSON FRANCE S.A.**

68 bis, rue Marjolin  
92300, Levallois-Perret, France  
Phone: 33.1.40.87.37.37  
Telex: 610657

---

**EPSON AUSTRALIA PTY.  
LTD.**

70 GIBBES STREET,  
CHATSWOOD 2067 NSW.  
Phone: 2-9903-9000  
Fax: 2-9903-9177

**EPSON SINGAPORE PTE. LTD.**

No. 1 Temasek Avenue #36-00  
Millenia Tower, Singapore 039192  
Phone: (065) 33 77 911  
Fax: (065) 33 41 185

**EPSON HONG KONG LTD.**

Rooms 4706-10, 47/F,  
China Resources Bldg.,  
26 Harbour Road, Wanchai,  
Hong Kong  
Phone: 2585-4300  
Fax: 2827-7083

**EPSON TAIWAN TECHNOLOGY &  
TRADING LTD.**

10F, No. 287 Nanking E. Road, Sec. 3,  
Taipei, Taiwan, R.O.C.  
Phone: (02) 717-7360  
Fax: (02) 712-9164

---

**EPSON ITALIA S.p.A.**

V.le F.lli Casiraghi 427  
20099 Sesto S. Giovanni  
MI, Italy  
Phone: 2-262331  
Fax: 2-2440750

**EPSON IBERICA S.A.**

Av. de Roma, 18-26  
08290 Cerdanyola del Valles  
Barcelona, Spain  
Phone: 582. 15.00  
Fax: 582. 15.55

**EPSON PORTUGAL, S.A.**

R. do Progresso, 471, 1.ª Perafita  
4460 Matosinhos, Portugal  
Phone: (02) 996 14 02  
Fax: (02) 996 14 11

**SEIKO EPSON CORPORATION  
(Hirooka Office)**

80 Harashinden, Hirooka  
Shiojiri-shi, Nagano-ken  
399-0785 Japan



**EPSON**

Digital Camera Utility Programs

*EPSON Photo!2*  
*EPSON Photo File Uploader*

**User's Guide**