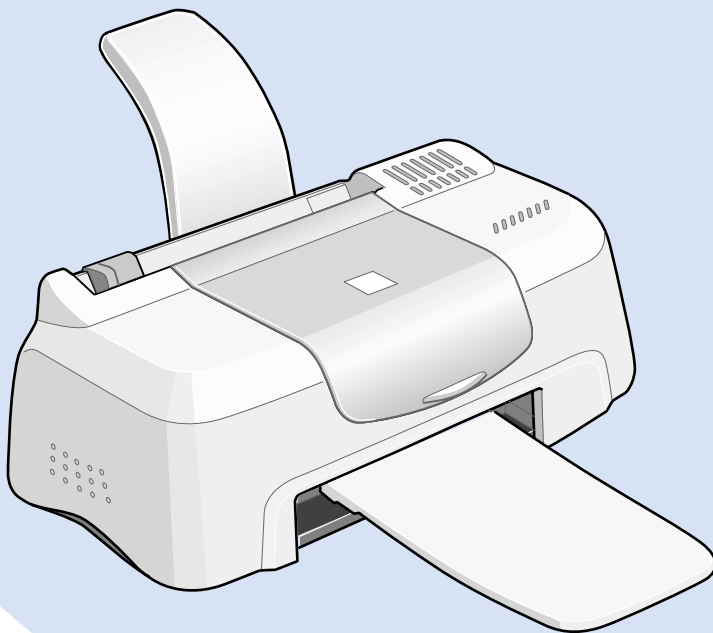


# EPSON STYLUS™ COLOR 580



## *Daily Use Guide*

**EPSON®**

# EPSON STYLUS™ COLOR 580

## Daily Use

<b><i>Where to Find Information</i></b> . . . . .	<b>2</b>
<b><i>Safety Instructions</i></b> . . . . .	<b>4</b>
Important Safety Instructions . . . . .	4
A Few Precautions . . . . .	5
For United Kingdom Users . . . . .	7
Warnings, Cautions, and Notes . . . . .	8
<b><i>Loading Special Paper, Envelopes, and Other Media</i></b> . . . . .	<b>8</b>
Loading Special Paper and Other Media . . . . .	8
Loading Envelopes . . . . .	9
<b><i>Printing with Windows</i></b> . . . . .	<b>10</b>
Printer Software Introduction . . . . .	10
Making Changes to Printer Settings . . . . .	11
<b><i>Printing with Macintosh</i></b> . . . . .	<b>12</b>
Printer Software Introduction . . . . .	12
Making Changes to Printer Settings . . . . .	12
<b><i>Replacing Ink Cartridges</i></b> . . . . .	<b>13</b>
Replacing an Empty Ink Cartridge . . . . .	13
<b><i>Maintenance</i></b> . . . . .	<b>14</b>
Checking the Print Head Nozzles . . . . .	14
Cleaning the Print Head . . . . .	15
Aligning the Print Head . . . . .	16
<b><i>Troubleshooting</i></b> . . . . .	<b>17</b>
Correcting USB Problems . . . . .	17
Error Messages . . . . .	20
Typical Problems and Solutions . . . . .	20
<b><i>Options and Consumable Products</i></b> . . . . .	<b>20</b>

# Where to Find Information

## Setup Guide

This guide will help you set up and begin using your printer. It includes information on setting up your printer and installing the printer software.

## Daily Use guide

This guide provides information on normal printer operation. It also contains troubleshooting tips.

## Reference Guide included on the CD-ROM

The Reference Guide contained on the CD-ROM included with your printer provides detailed information about printer software settings, printing on special paper, maintenance, and problem solving.

To open the *Reference Guide*, insert the printer software CD in the CD-ROM drive.

For Windows, select Online Guide in the Installer dialog box and click . Then, click View Reference Guide to open the guide.

For Macintosh, double-click the Online Guide icon in the EPSON window and then the EPSON STYLUS COLOR 580 icon. Then, click View Reference Guide to open the guide.

To read this manual it is necessary to have a Web browser installed on the computer.

All rights reserved. No part of this publication may be reproduced, stored in a retrieval system, or transmitted in any form or by any means, electronic, mechanical, photocopying, recording, or otherwise, without the prior written permission of SEIKO EPSON CORPORATION. The information contained herein is designed only for use with this EPSON printer. EPSON is not responsible for any use of this information as applied to other printers.

Neither SEIKO EPSON CORPORATION nor its affiliates shall be liable to the purchaser of this product or third parties for damages, losses, costs, or expenses incurred by the purchaser or third parties as a result of: accident, misuse, or abuse of this product or unauthorized modifications, repairs, or alterations to this product, or (excluding the U.S.) failure to strictly comply with SEIKO EPSON CORPORATION's operating and maintenance instructions.

SEIKO EPSON CORPORATION shall not be liable for any damages or problems arising from the use of any options or any consumable products other than those designated as Original EPSON Products or EPSON Approved Products by SEIKO EPSON CORPORATION.

SEIKO EPSON CORPORATION shall not be held liable for any damage resulting from electromagnetic interference that occurs from the use of any interface cables other than those designated as EPSON Approved Products by SEIKO EPSON CORPORATION.

EPSON is a registered trademark and EPSON Stylus is a trademark of SEIKO EPSON CORPORATION.

Microsoft and Windows are registered trademarks of Microsoft Corporation.

*General Notice: Other product names used herein are for identification purposes only and may be trademarks of their respective owners. EPSON disclaims any and all rights in those marks.*

Copyright © 2000 by SEIKO EPSON CORPORATION, Nagano, Japan.



**Printed on Recycled Paper.**

# ***Safety Instructions***

---

## ***Important Safety Instructions***

Read all of these instructions before using your printer. Also, be sure to follow all warnings and instructions marked on the printer.

- Do not block or cover the openings in the printer's cabinet. Do not insert objects through the slots.
- Take care not to spill liquid on the printer.
- Use only the type of power source indicated on the printer's label.
- Connect all equipment to properly grounded power outlets. Avoid using outlets on the same circuit as photocopiers or air control systems that regularly switch on and off.
- Avoid electrical outlets controlled by wall switches or automatic timers.
- Keep the entire computer system away from potential sources of electromagnetic interference, such as loudspeakers or the base units of cordless telephones.
- Do not use a damaged or frayed power cord.
- Unplug the printer's power cord from the electrical outlet when you do not use the printer for a long period of time.
- If you use an extension cord with the printer, make sure that the total ampere rating of the devices plugged into the extension cord does not exceed the cord's ampere rating. Also, make sure that the total ampere rating of all devices plugged into the wall outlet does not exceed the wall outlet's ampere rating.
- Do not attempt to service the printer yourself.

- ❑ Unplug the printer and refer servicing to qualified service personnel under the following conditions:

The power cord or plug is damaged; liquid has entered the printer; the printer has been dropped or the cabinet damaged; the printer does not operate normally or exhibits a distinct change in performance.

- ❑ If you plan to use the printer in Germany, the building installation must be protected by a 10 or 16 amp circuit breaker to provide adequate short-circuit protection and over-current protection for this printer.

---

## ***A Few Precautions***

Take note of the following when using the printer, handling the ink cartridges, or choosing a location for the printer.

### ***When using the printer***

Observe the following:

- ❑ Do not put your hand inside the printer or touch the ink cartridges during printing.
- ❑ Do not move the print head by hand; otherwise, you may damage the printer.
- ❑ Before transporting the printer, make sure that the print head is in the home (far right) position and the ink cartridges are in place.

### ***When handling the ink cartridges***

Observe the following:

- ❑ Keep ink cartridges out of the reach of children. Do not allow children to drink from or otherwise handle the cartridges.
- ❑ Be careful when you handle the used ink cartridges, as there may be some ink around the ink supply port.

- ❑ If ink gets on your skin, wash it off with soap and water. If it gets in your eyes, flush them immediately with water. If discomfort or vision problems remain after a thorough flushing, see a doctor immediately.
- ❑ Do not shake an ink cartridge; this can cause leakage.
- ❑ Install the ink cartridge immediately after you remove it from its package. Leaving the cartridge unpacked for a long time before use may result in reduced print quality.
- ❑ Once you install an ink cartridge, do not open the clamp or remove the cartridge except to replace it with a new one. Otherwise, the cartridge may become unusable.
- ❑ Do not use an ink cartridge beyond the date printed on the cartridge carton. For best results, use up the ink cartridges within six months of installing them.
- ❑ Do not dismantle the ink cartridges or try to refill them. This could damage the print head.
- ❑ After bringing an ink cartridge inside from a cold storage site, allow it to warm up at room temperature for at least three hours before using it.
- ❑ Store ink cartridges in a cool, dark place.

## ***When choosing a place for the printer***

Observe the following:

- ❑ Place the printer on a flat, stable surface that extends beyond the printer base in all directions. The printer will not operate properly if it is tilted or at an angle.
- ❑ Leave enough space in front of the printer for paper to be ejected smoothly.
- ❑ Avoid places subject to rapid changes in temperature and humidity. Also, keep the printer away from direct sunlight, strong light, or heat sources.
- ❑ Avoid places subject to shocks and vibrations.

- ❑ Leave enough room around the printer to allow for sufficient ventilation.
- ❑ Avoid places subject to dust.
- ❑ Place the printer near a wall outlet where the plug can be easily unplugged.

---

## ***For United Kingdom Users***

### ***Use of options***

EPSON (UK) Limited shall not be liable against any damages or problems arising from the use of any options or consumable products other than those designated as Original EPSON Products or EPSON Approved Products by EPSON (UK) Limited.

### ***Safety information***



***Warning:***

*This appliance must be earthed. Refer to the rating plate for voltage and check that the appliance voltage corresponds to the supply voltage.*

**Important:**

The wires in the mains lead fitted to this appliance are coloured in accordance with the following code:

Green and yellow — Earth

Blue — Neutral

Brown — Live

**If you have to fit a plug:**

As the colours of the mains lead of this appliance may not match the coloured markings used to identify the terminals in a plug, please proceed as follows:

The green and yellow wire must be connected to the terminal in the plug which is marked with the letter E or the earth symbol ( $\perp$ ).



The blue wire must be connected to the terminal in the plug marked with the letter N.

The brown wire must be connected to the terminal in the plug marked with the letter L.

If damage occurs to the plug, replace the cord set or consult a qualified electrician.

Replace fuses only with a fuse of the correct size and rating.

---

## **Warnings, Cautions, and Notes**



### **Warnings**

*must be followed carefully to avoid bodily injury.*



### **Cautions**

*must be observed to avoid damage to your equipment.*

### **Notes**

*contain important information and useful tips on the operation of your printer.*

## **Loading Special Paper, Envelopes, and Other Media**

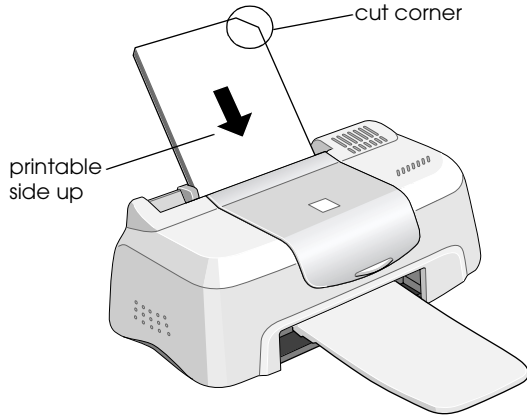
---

### **Loading Special Paper and Other Media**

You can print on a wide variety of special media, including ink jet paper, photo quality glossy film, photo paper, transparencies, index cards, and adhesive sheets.

When loading special media distributed by EPSON, read the instruction sheets packed with the media first and keep the following points in mind. For more details on using such media, see "Paper Handling" in the online *Reference Guide*.

- ❑ Make sure the printable side of the paper is facing up when loading media into the sheet feeder. See the instruction sheets packed with the media to determine which side is the printable surface. Some media have cut corners to help identify the correct loading direction, as shown in the illustration.



- ❑ Make sure the paper stack fits under the arrow mark located on the inside surface of the left edge guide.
- ❑ For more information on loading capacities for EPSON special media, see your online *Reference Guide*.

---

## ***Loading Envelopes***

When printing on envelopes, please note the following:

- ❑ You can load up to 10 envelopes in the sheet feeder.

***Note:***

*The folding quality and thickness of envelopes varies widely. If the total thickness of the stack of envelopes exceeds 10 mm, press each envelope in the stack flat before loading.*

- ❑ Load envelopes flap edge first with the flap side down.

- ❑ Do not use envelopes that are curled or folded. Flatten the envelope flaps before loading. Avoid using envelopes that are too thin; they may curl during printing.
- ❑ Select Plain Paper as the Media Type setting in the printer driver.

## ***Printing with Windows***

---

### ***Printer Software Introduction***

The printer software which comes with your printer includes a printer driver and printer utilities. The printer driver lets you choose from a wide variety of settings to get the best results from your printer. The printer utilities help you check the printer and keep it in top operating condition.

If you encounter any problems, refer to the Technical Support Web site for help by clicking Technical Support on the Main menu of the printer driver.

### ***Accessing the printer software***

You can access the printer software from most Windows applications, or from the Windows Start menu.

When you access the printer software from a Windows application, the settings that you make apply only to the application you are using.

When you access the printer software from the Start menu, the settings that you make apply to all of your Windows applications.

#### ***From Windows applications***

1. From the File menu, click Print or Print Setup.

2. In the dialog box that appears, click Printer, Setup, Options, or Properties. (Depending on your application, you may need to click a combination of these buttons.) The printer driver opens.

### ***From the Windows Start menu***

1. Click Start, point to Settings, then click Printers.
2. For Windows 98, select your printer, then click Properties on the File menu. For Windows 2000, select your printer, then click Printing Preferences on the File menu. The printer driver opens.

---

## ***Making Changes to Printer Settings***

The printer driver features the following menus and settings.

Main:      Media Type, Ink, Mode, Print Preview

Paper:     Paper Size, Copies, Orientation, Printable Area

Layout:    Reduce/Enlarge, Multi-Page, Watermark

The Mode settings on the Main menu are arranged to give you three levels of control over the printer driver, Automatic, PhotoEnhance and Custom.

In addition to making comprehensive Mode settings that affect overall print quality, you can also modify individual aspects of your printout using the Paper and Layout menus. For more information about the Paper and Layout menus, see your online *Reference Guide*.

### ***Making the Media Type setting***

The Media Type setting determines what other settings are available, so you should always make this setting first.

On the Main menu, select a Media Type setting that matches the media that is loaded in the printer.

## ***Printing with Macintosh***

---

### ***Printer Software Introduction***

The printer software which comes with your printer includes a printer driver and printer utilities. The printer driver lets you choose from a wide variety of settings to get the best results from your printer. The printer utilities help you check the printer and keep it in top condition.

For information on using the printer driver, see “Making Changes to Printer Settings” on page 12.


For information on using the printer utilities, see “Using the Printer Utilities” in the online *Reference Guide*.



You can also get more information about the printer software by clicking the help icon in any of the dialog boxes in the printer driver.

---

### ***Making Changes to Printer Settings***

You will find the printer driver settings in the following dialog boxes.

- Print dialog box (click Print on the File menu of your application or click Options in the Page Setup dialog box)
- Page Setup dialog box (click Page Setup on the File menu of your application)
- Layout dialog box (click the  Layout icon button in the Print dialog box)

- ❑ Background Printing dialog box (click the  Background Printing icon button located in the Print dialog box)
- ❑ Preview dialog box (click the  Preview icon button and then click Preview in the Print dialog box)

The Mode settings in the Print dialog box are arranged to give you three levels of control over the printer driver, Automatic, PhotoEnhance and Custom.

In addition to making comprehensive Mode settings that affect overall print quality, you can also modify individual aspects of your printout using the settings contained in the Page Setup and the Layout dialog boxes.

## ***Making the Media Type setting***

The Media Type setting determines what other settings are available, so you should always make this setting first.

In the Print dialog box, select the Media Type setting that matches the paper that is loaded in the printer. To find out what media type you are using, find your media in the list found under “Media types” on page 22, and refer to the corresponding media type under which it is grouped (shown in larger type). For some media, there are several Media Type settings to choose from.

## ***Replacing Ink Cartridges***

---

### ***Replacing an Empty Ink Cartridge***

The Status Monitor 3 utility (for Windows), or the StatusMonitor utility (for Macintosh), lets you monitor the remaining ink levels from your computer and view on-screen instructions for replacing an empty or nearly empty ink cartridge.

When an ink cartridge is empty or nearly empty, click the How to button in the Status Monitor window to move the print head to the ink cartridge replacement position. Follow the on-screen instructions to replace the cartridge.

**Note:**

*If you need to replace an ink cartridge before it is empty, access the Ink Cartridge Replacement utility from the Utilities menu in your EPSON printer driver.*

## **Maintenance**

---

### **Checking the Print Head Nozzles**

If you find that the printed image is unexpectedly faint or dots in the printed image are missing, you may be able to identify the problem by checking the print head nozzles.

You can check the print head nozzles from your computer using the Nozzle Check utility, accessed through the printer software. Windows users can also access the Nozzle Check utility using a shortcut icon.

### **Using the Nozzle Check utility**

**Note:**


*Do not use the Nozzle Check utility while printing is in progress; otherwise, your printout may be marred.*

#### **For Windows users**

There are two ways to access the Nozzle Check utility:

- ❑ Right-click the printer-shaped icon on the Windows taskbar and click Nozzle Check on the shortcut menu that appears.
- ❑ Access the printer software and click the Utility tab, then click the Nozzle Check button. And follow the instructions.

## For Macintosh users

Access the Print or Page Setup dialog box and click the  Utility icon button, then click the Nozzle Check button in the Utility dialog box. And follow the instructions.

---

## Cleaning the Print Head

If you find that the printed image is unexpectedly faint or dots in the printed image are missing, you may be able to solve these problems by cleaning the print head, which ensures that the nozzles are delivering ink properly.

You can clean the print head from your computer using the Head Cleaning utility, accessed through the printer software. Windows users can also access the Head Cleaning utility using a shortcut icon.

### Note:

- ❑ *Print head cleaning uses both color and black ink. To avoid wasting ink, clean the print head only if print quality declines; for example, if the printout is blurry or colors are incorrect or missing.*
- ❑ *Use the Nozzle Check utility first to confirm that the print head needs to be cleaned. This saves ink.*
- ❑ *Do not start the Head Cleaning or Nozzle Check utility while printing is in progress; otherwise, your printout may be marred.*

## Using the Head Cleaning utility

### Note:

*If the Status Monitor 3, Progress Meter, or StatusMonitor displays a message indicating that the ink cartridges need replacing, you cannot clean the print head. Replace the appropriate ink cartridge first.*

## For Windows users


- ❑ Right-click the printer-shaped icon on the Windows taskbar and click Head Cleaning on the shortcut menu that appears.



- ❑ Access the printer software and click the Utility tab, then click the Head Cleaning button. And follow the instructions.

After opening the utility, follow the on-screen instructions.

### **For Macintosh users**

Access the printer software and click the  Utility icon button in the Print or Page Setup dialog box, then click the Head Cleaning button in the Utility dialog box. And follow the instructions.

---

## **Aligning the Print Head**

If you notice a misalignment of vertical lines, you may be able to solve this problem from your computer using the Print Head Alignment utility in your printer software. Windows users can also access the Print Head Alignment utility using a shortcut icon. Refer to the appropriate section below.

### **Note:**


*Do not start the Print Head Alignment utility while printing is in progress; otherwise, your printout may be marred.*

### **For Windows users**

There are two ways to access the Print Head Alignment utility:

- ❑ Right-click the printer-shaped icon on the Windows taskbar and click Print Head Alignment on the shortcut menu that appears.
- ❑ Access the printer software and click the Utility tab, then click the Print Head Alignment button. And follow the instructions.

### **For Macintosh users**

Access the printer software and click the  Utility icon button in the Print or Page Setup dialog box, then click the Print Head Alignment button. And follow the instructions.

## ***Troubleshooting***

EPSON's Technical Support Web Site provides help with problems that cannot be solved using the troubleshooting information in your printer documentation.

### ***For Windows users***

If you encounter a problem, access the Technical Support Web Site in one of the following ways:

- From Status Monitor 3

Click Technical Support in the Status Monitor 3 dialog box.

- From your printer driver

Click Technical Support on the Main menu of the printer driver.

### ***For Macintosh users***

To access Technical Support, insert the CD in the CD-ROM drive and double-click the Technical Support Web Site icon in the EPSON window.

---

## ***Correcting USB Problems***

If you are having difficulty using your printer with a USB connection, read the information in this section.

## ***Make sure that your computer is a Windows 98 or Windows 2000 pre-installed model***

Your computer must be a Windows 98 pre-installed model, a Windows 2000 pre-installed model, or a Windows 98 pre-installed model that has been upgraded to Windows 2000. You may not be able to install or run the USB Printer Driver on a computer which is not equipped with a USB port or which has been upgraded from Windows 95.

## ***Make sure that EPSON USB Printer Devices appears on the Device Manager menu (for Windows 98 only)***

If you canceled the plug-and-play driver installation before the procedure was completed, either the USB printer device driver or the printer driver may be incorrectly installed.

Follow the steps below to check the installation and reinstall the drivers.

1. Plug in the power cord and then plug the USB cable into the printer and the computer.
2. Right-click the My Computer icon on your desktop, then click Properties.
3. Click the Device Manager tab.

If your drivers are correctly installed, EPSON USB Printer Devices should appear on the Device Manager menu.

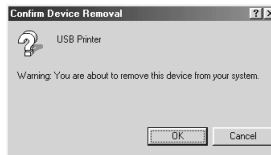
If EPSON USB Printer Devices does not appear on the Device Manager menu, click the plus (+) sign beside Other Devices to view the installed devices.



If USB Printer appears under Other Devices, the USB printer device driver is not installed correctly. If EPSON Stylus COLOR 580 appears, the printer driver is not installed correctly.

If neither USB Printer nor EPSON Stylus COLOR 580 appears under Other Devices, click Refresh or unplug the USB cable from the printer, then plug it into the printer again.

4. Under Other Devices, click USB Printer or EPSON Stylus COLOR 580, then click Remove and then OK.
5. When the following dialog box appears, click OK. Then, click OK to close the System Properties dialog box.



6. Turn off the PC and unplug both the printer and the PC. Then, reinstall the drivers from the beginning, following the instructions in the *Setup Guide*.

## ***Printer does not work correctly with the USB cable***

If your printer does not work correctly with the USB cable, try one or more of these solutions:

- Use the USB cable (C83623\*) recommended in "System Requirements" in the online *Reference Guide*.
- If you use a USB hub, connect the printer to the first tier of the hub, or connect the printer directly to the computer's USB port.

- ❑ For Windows 98 users, try reinstalling the USB printer device driver and the printer software. First, uninstall EPSON Printer Software using the Add/Remove Programs utility in the Control Panel, then uninstall EPSON USB Printer Devices. Next, reinstall the software as described in *Setup Guide*. If EPSON USB Printer Devices is not registered in the Add/Remove Programs list, access the CD-ROM and double-click epusbun.exe in the Win 9x folder. Then follow the on-screen instructions.

---

## ***Error Messages***

The Status Monitor 3 (Windows) or StatusMonitor (Macintosh) utility provides status messages and a graphic display showing the current state of the printer.

If a problem occurs while printing, an error message appears in the Progress Meter window. Click the How To button to have the Status Monitor provide instructions for dealing with the problem.

---

## ***Typical Problems and Solutions***

Most printer problems have simple solutions. Find the problem in the list below and apply the recommended solution. For more information, see “Troubleshooting” in the online *Reference Guide*.

## ***Options and Consumable Products***

The following options and consumable products are available for your printer.

## Options

EPSON supplies the following interface cable for your printer. However, you can use any interface cable that meets these specifications. See your computer manual for any additional requirements.

USB Interface Cable (shielded) C83623\* from Series A4-pin (computer) to Series B4-pin (printer)

This cable supports bidirectional communication.

**Note:**

- ❑ *The asterisk (\*) is a substitute for the last digit of the product number, which varies by location.*
- ❑ *Depending on your geographic location, this cable may not be supplied.*



**Caution:**

*Use only interface cables which meet the specifications listed above. Using other cables not covered by EPSON warranties may cause the printer to malfunction.*

## Consumable products

The following ink cartridges and EPSON special media are available for your printer.

### Ink cartridges

You can use the following cartridges with your printer.

Black ink cartridge	T013
Color ink cartridge	T014

**Note:**

*The product numbers of ink cartridges may vary by location.*

### Media types

EPSON offers specially-designed media for ink jet printers to meet most high-quality printing needs.

To make the Media Type setting in your printer driver, select the Media Type setting that matches the media that is loaded in the printer. To find out what Media Type you are using, find your media in the list below, and refer to the corresponding Media Type under which it is grouped (shown in larger type). For some media, there are several Media Type settings to choose from.

The available media types are listed below.

Plain Paper	
EPSON Premium Ink Jet Plain Paper (A4)	S041214
360 dpi Ink Jet Paper	
EPSON 360 dpi Ink Jet Paper (A4)	S041059 S041025
EPSON 360 dpi Ink Jet Paper (Letter)	S041060 S041028
EPSON Iron-On Cool Peel Transfer Paper (A4)	S041154
EPSON Iron-On Cool Peel Transfer Paper (Letter)	S041153 S041155
Photo Quality Ink Jet Paper	
EPSON Photo Quality Ink Jet Paper (A4)	S041061 S041026
EPSON Photo Quality Ink Jet Paper (Letter)	S041062 S041029
EPSON Photo Quality Ink Jet Paper (Legal)	S041067 S041048
EPSON Photo Quality Ink Jet Cards (A6)	S041054
EPSON Photo Quality Ink Jet Cards (5 × 8")	S041121
EPSON Photo Quality Ink Jet Cards (8 × 10")	S041122
EPSON Photo Quality Self Adhesive Sheets (A4)	S041106
EPSON Ink Jet Note Cards A6 (with envelopes)	S041147
EPSON Ink Jet Greeting Cards 5 × 8" (with envelopes)	S041148
EPSON Ink Jet Greeting Cards 8 × 10" (with envelopes)	S041149



## Matte Paper-Heavyweight

EPSON Matte Paper-Heavyweight (A4)	S041256 S041258 S041259
EPSON Matte Paper-Heavyweight (Letter)	S041257

## Photo Paper

EPSON Photo Paper (A4)	S041140
EPSON Photo Paper (Letter)	S041141
EPSON Photo Paper (4 × 6")	S041134
EPSON Photo Paper (100 × 150 mm)	S041255
EPSON Photo Paper (200 × 300 mm)	S041254
EPSON Panoramic Photo Paper (210 × 594 mm)	S041145
EPSON Photo Paper Cards (A4)	S041177

## Photo Quality Glossy Film

EPSON Photo Quality Glossy Film (A4)	S041071
EPSON Photo Quality Glossy Film (Letter)	S041072
EPSON Photo Quality Glossy Film (A6)	S041107
EPSON Photo Stickers 16 (A6)	S041144
EPSON Photo Stickers 4 (A6)	S041176

## Ink Jet Transparencies

EPSON Ink Jet Transparencies (A4)	S041063
EPSON Ink Jet Transparencies (Letter)	S041064

### **Note:**

*The availability of special media varies by location.*

The EPSON logo is displayed in a bold, blue, sans-serif font. A thin blue arc is positioned behind the text, curving from the bottom left towards the top right. A registered trademark symbol (®) is located at the top right of the word.

**EPSON®**