

Network Guide

Copyright

Copyright

No part of this publication may be reproduced, stored in a retrieval system, or transmitted in any form or by any means, electronic, mechanical, photocopying, recording, or otherwise, without the prior written permission of Seiko Epson Corporation. No patent liability is assumed with respect to the use of the information contained herein. Neither is any liability assumed for damages resulting from the use of the information herein. The information contained herein is designed only for use with this Epson product. Epson is not responsible for any use of this information as applied to other products.

Neither Seiko Epson Corporation nor its affiliates shall be liable to the purchaser of this product or third parties for damages, losses, costs, or expenses incurred by the purchaser or third parties as a result of accident, misuse, or abuse of this product or unauthorized modifications, repairs, or alterations to this product, or (excluding the U.S.) failure to strictly comply with Seiko Epson Corporation's operating and maintenance instructions.

Seiko Epson Corporation and its affiliates shall not be liable for any damages or problems arising from the use of any options or any consumable products other than those designated as Original Epson Products or Epson Approved Products by Seiko Epson Corporation.

Seiko Epson Corporation shall not be held liable for any damage resulting from electromagnetic interference that occurs from the use of any interface cables other than those designated as Epson Approved Products by Seiko Epson Corporation.

© 2015 Seiko Epson Corporation. All rights reserved.

The contents of this manual and the specifications of this product are subject to change without notice.

Trademarks

Trademarks

- ❑ EPSON® is a registered trademark, and EPSON EXCEED YOUR VISION or EXCEED YOUR VISION is a trademark of Seiko Epson Corporation.
- ❑ EPSON Scan software is based in part on the work of the Independent JPEG Group.
- ❑ Microsoft®, Windows®, and Windows Vista® are registered trademarks of Microsoft Corporation.
- ❑ Apple, Macintosh, Mac OS, OS X, AirPort, AirMac, Bonjour, and Safari are trademarks of Apple Inc., registered in the U.S. and other countries. AirPrint is a trademark of Apple Inc.
- ❑ Android™ is a trademark of Google Inc.
- ❑ General Notice: Other product names used herein are for identification purposes only and may be trademarks of their respective owners. Epson disclaims any and all rights in those marks.

Contents

Copyright

Trademarks

About this Manual

Marks and Symbols.	6
Definitions of Terms Used in this Manual.	6
Artworks.	7
Operating System References.	7

Introduction

Introduction of This Manual.	8
Using the Printer from a Smart Device.	8
Using the printer from a Computer.	8
Connecting the Printer to an Access Point.	8

Connecting the Printer to a Smart Device

Connection Types Between the Printer and a Smart Device.	9
Wi-Fi.	9
Wi-Fi Direct (Direct Connection).	9
Connection Settings Between the Printer and a Smart Device.	10
Connecting through an Access Point.	10
Preparing an Application and Wi-Fi Connection from a Smart Device.	11
Connecting by Wi-Fi Direct.	12
Checking the Connection Between the Printer and the Smart Device.	18
Changing the Connection Method Between the Printer and the Smart Device.	20
Additional Connections for a Smart Device.	20

Connecting the Printer and a Computer

Connection Types Between the Printer and a Computer.	22
Wi-Fi.	22
Wi-Fi Direct Simple AP Mode.	22
Ad Hoc Mode.	23
USB Connection.	23

Connection Settings Between the Printer and a Computer.	24
Connecting to Wi-Fi.	24
Connecting the Printer and a Computer Directly.	28
Setting up a USB Connection.	30
Changing a Connection Method Between the Printer and a Computer.	32
Replacing or Adding New Access Points.	33
Changing the Printer Connection to Wi-Fi.	33
Adding a USB Connection to the Printer.	36
Adding Computers.	38
Adding Computers Using the Software Disc (for Windows Only).	38
Adding Computers from the Website - Windows.	40
Adding Computers from the Website - Mac OS X.	42
Adding Computers Manually - Windows.	42
Adding Computers Manually - Mac OS X.	43

Making Wi-Fi Network Settings from the Printer's Control Panel

Setting Up Manually.	44
Setting Up Automatically by Pressing a Button (WPS).	47
PIN Code Setup (WPS).	49
Simple AP Mode.	51

Checking the Printer's Network Connection Status

Network Icon.	55
Checking the Network Status from the Printer's Control Panel.	55
Printing a Network Connection Report.	56
Printing a Network Status Sheet.	56

Advanced Network Settings

Setting Up from the Printer's Control Panel.	57
Setting Up from Web Config.	58

Disconnecting or Initializing the Network

Disabling Wi-Fi from the Printer's Control Panel.	59
---	----

Contents

Disconnecting Wi-Fi Direct from the Printer's Control Panel.	59	Setting Up a WSD Port – Windows.	87
Initializing the Network Settings from the Printer's Control Panel.	59	Checking the Print Port.	89
Disabling Wi-Fi from Web Config.	59	Connecting a Scanner to the Network.	90
Solving Problems			
Cannot Connect by Wi-Fi.	61		
A: Cannot Connect to the Internet from a Smart Device.	61		
B: Cannot Print with Wi-Fi from a Smart Device.	62		
C: Cannot Print with Direct Connect from a Smart Device.	62		
D: Cannot Connect to the Internet from a Computer.	63		
E: Cannot Print or Scan by Wi-Fi from a Computer.	67		
F: Cannot Print with Direct Connect from a Computer.	68		
G: Cannot Register the Printer to Cloud Services or Cannot Update the Firmware.	68		
H: The Internet Disconnects when no Changes were made to the Network Environment.	68		
Messages and Solutions on the Network Connection Report.	69		
Checking the Connection Using a Ping Command. .73			
Checking the Connection Using a Ping Command - Windows.	73		
Checking the Connection Using a Ping Command - Mac OS X.	74		
Cannot Connect After Trying all Solutions.	76		
Appendix			
Basic Network Information Used by the Printer. . . .77			
Type of Network Used by the Printer.	77		
Summary of Networks with a Relay Point.	77		
Networks Without a Relay Point (Wi-Fi Direct/Ad Hoc).	81		
Public Line Networks.	82		
Network Functions and IPv4/IPv6 Tables.	82		
Client Operating Systems that Support the TCP/IP Protocol.	82		
Network Functions and IPv4/IPv6 Tables.	83		
Combinations that can be Connected at the Same Time.	83		
Ports and Protocols.	84		
Setting Up Standard TCP/IP Ports – Windows. . .85			

About this Manual

Marks and Symbols

**Caution:**

Instructions that must be followed carefully to avoid bodily injury.

**Important:**

Instructions that must be observed to avoid damage to your equipment.

Note:

Instructions containing useful tips and restrictions on printer operation.

➔ Related Information

Clicking this icon takes you to related information.

Definitions of Terms Used in this Manual

The following terms are used in this manual.

 Wi-Fi (Wireless LAN)

Wi-Fi (Wireless LAN) is a network that wirelessly communicates data. This term is the same as the term "Infrastructure mode" that communicates data through a relay point (for example, an access point) when connecting printers and computers.

 Ethernet (Wired LAN)

An Ethernet is a network that communicates data using an Ethernet cable. This is also known as a "Wired LAN", but in this manual we will use "Ethernet".

 Access Point

This relays communication between Wi-Fi devices. We also use the term "access point" for a wireless router that has a relay function. Many wireless routers have a LAN port to allow wired LAN connections. These can also be used as a hub for wired LAN connections.

 Smart Device

This term is a generic term for Android devices and iOS devices that are capable of communicating with a printer. This term includes smart phones and tablets.

 Password

This is an encryption key used in the security for the access point. A password may also be called a "WEP key", a "WPA passphrase", a "Pre-Shared Key", and so on according to the access point or security system being used. We use "Password" in this manual.

Artworks

- ❑ Details of screen shots and illustrations may vary by model, but the instructions are the same.
- ❑ Screen shots are from Windows 7 and Mac OS X v 10.10.x. Details may vary between OS versions.
- ❑ Some of the menu items in the screen shots may vary by model.

Operating System References

Windows

In this manual, terms such as "Windows 8.1", "Windows 8", "Windows 7", "Windows Vista", and "Windows XP" refer to the following operating systems. Additionally, "Windows" is used to refer to all versions.

- ❑ Microsoft® Windows® 8.1 operating system
- ❑ Microsoft® Windows® 8 operating system
- ❑ Microsoft® Windows® 7 operating system
- ❑ Microsoft® Windows Vista® operating system
- ❑ Microsoft® Windows® XP operating system
- ❑ Microsoft® Windows® XP Professional x64 Edition operating system

Mac OS X

In this manual, "Mac OS X v10.10.x" refers to OS X Yosemite, "Mac OS X v10.9.x" refers to OS X Mavericks, and "Mac OS X v10.8.x" refers to OS X Mountain Lion. Additionally, "Mac OS X" is used to refer to "Mac OS X v10.10.x", "Mac OS X v10.9.x", "Mac OS X v10.8.x", "Mac OS X v10.7.x", and "Mac OS X v10.6.8".

Introduction

Introduction of This Manual

This manual introduces the procedures for connecting smart devices and computers to the printer, building a network connection, and making network settings for the printer. To use the printer with Wi-Fi, you need a relay point such as an access point or a router. If you have a relay point, we recommend that you use it to connect the printer by Wi-Fi. If you do not have a relay point, you can also connect the printer directly to your smart device by Wi-Fi.

This manual explains the procedures for making network settings on computers and smart devices. Follow the procedure that best suits your network setup.

Before you start reading this manual, you have to finish the initial setup for the printer. See the manual supplied with the printer for details. Also, if you want to make the printer's network settings from a computer, connect a computer and relay point (access point), and connect the computer to the network beforehand.

Using the Printer from a Smart Device

The [Connecting the Printer to a Smart Devices] section explains how to connect the printer to a smart device. If you want to connect a computer and a smart device to the printer at the same time, we recommend connecting the printer to the computer first. This allows you to connect the smart device to the printer simply by selecting the same network (SSID) as the printer.

Related Information

➔ [“Connecting the Printer to a Smart Device” on page 9](#)

Using the printer from a Computer

The [Connecting the Printer and a Computer] section explains how to make printer connection settings from a computer. You can set up by using the software disc, set up from the website, or set up manually.

Related Information

➔ [“Connecting the Printer and a Computer” on page 22](#)

Connecting the Printer to an Access Point

Explains how to connect the printer to an access point. Make settings from the printer's control panel.

Related Information

➔ [“Making Wi-Fi Network Settings from the Printer's Control Panel” on page 44](#)

Connecting the Printer to a Smart Device

Connection Types Between the Printer and a Smart Device

Use one of the following connection methods to connect the printer to a smart device. The illustrations may vary by model.

Wi-Fi

Connect the printer and the smart device to the access point. This is the typical connection method for home or office networks where computers are connected by Wi-Fi through the access point.



Related Information

- ➔ [“Connecting by Wi-Fi” on page 10](#)
- ➔ [“Basic Network Information Used by the Printer” on page 77](#)

Wi-Fi Direct (Direct Connection)

Use this connection method when you are not using Wi-Fi at home or at the office, or when you want to connect the printer and the smart device directly.

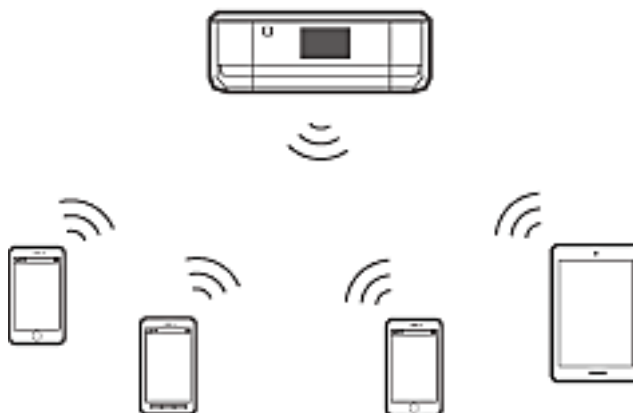
There are two Wi-Fi Direct modes.

Simple AP Mode

In this mode, the printer acts as an access point and you can connect up to four devices to the printer without having to use a standard access point. However, devices directly connected to the printer cannot communicate

Connecting the Printer to a Smart Device

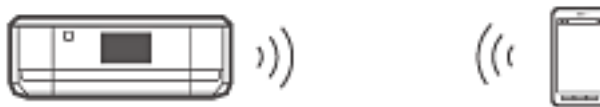
with each other through the printer. There are two ways to connect to the printer from a smart device; Wi-Fi connection and Wi-Fi Direct connection.



The printer can be connected by Wi-Fi and Simple AP mode simultaneously. However, if you start a network connection in Simple AP mode when the printer is connected by Wi-Fi, the Wi-Fi is temporarily disconnected.

Wi-Fi Direct Mode

You can establish a one-to-one connection between the printer and a smart device. Since the network connection is disconnected in Wi-Fi Direct mode, this type of connection should only be used as a temporary measure. Your smart device must be Wi-Fi Direct capable. See the documentation provided with your smart device for details.



Related Information

- ➔ [“Connecting by Wi-Fi Direct” on page 12](#)
- ➔ [“Basic Network Information Used by the Printer” on page 77](#)

Connection Settings Between the Printer and a Smart Device

Connecting through an Access Point

Connecting by Wi-Fi

Connect the printer to the access point by Wi-Fi, and select the same network (SSID) as the smart device. Make the following settings.

Making Wi-Fi Settings on the Printer

Use one of the following methods to set up the Wi-Fi and connect to the access point.

Connecting the Printer to a Smart Device

- From the printer's control panel

Make Wi-Fi settings from the printer's control panel.

- From the computer

Make Wi-Fi settings for the printer automatically from the computer if your computer is connected to the network by Wi-Fi.

Note:

Connect a smart device to the same network as the printer when you want to connect the smart device to a printer that has already been connected to the network.

Related Information

- ➔ [“Making Wi-Fi Network Settings from the Printer's Control Panel” on page 44](#)

Preparing an Application and Wi-Fi Connection from a Smart Device

Install Epson iPrint on your smart device, and then connect it to the same network (SSID) as the printer. Epson iPrint is a free application for smart devices. This allows you to print photos and other content from the smart device.

Related Information

- ➔ [“Preparing an Application and Wi-Fi Connection from a Smart Device” on page 11](#)

Checking the Connection Using Epson iPrint

Check the connection between the printer and the smart device using Epson iPrint.

Related Information

- ➔ [“Checking the Connection Between the Printer and the Smart Device” on page 18](#)

Preparing an Application and Wi-Fi Connection from a Smart Device

Connect a smart device to a printer that is already connected to the network by Wi-Fi.

1. Install Epson iPrint on your smart device.



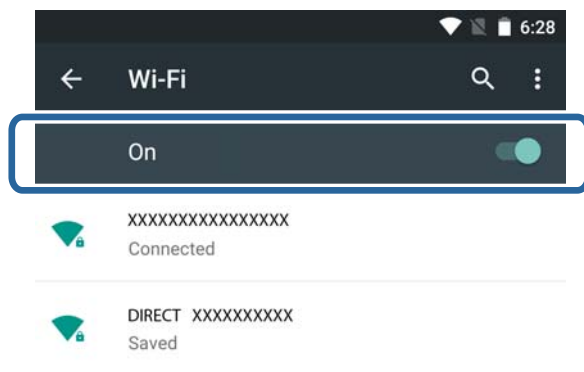
Install Epson iPrint on your smart device from the following URL or QR code.

Connecting the Printer to a Smart Device

<http://ipr.to>



2. Select Wi-Fi from the settings screen on your smart device, and then enable Wi-Fi.
See the documentation provided with your smart device for the operating instructions.



3. Select the same SSID as the printer, and then enter the password.
You can check the SSID that the printer has already connected to from the network status screen on the printer's control panel or by printing a network status sheet. For the SSID and password, contact the person who set up the access point, or see the documentation provided with the access point.
4. After establishing a connection, return to the home screen on the smart device.
You can check the connection between the printer and the smart device using Epson iPrint.

Related Information

➔ [“Checking the Connection Between the Printer and the Smart Device” on page 18](#)

Connecting by Wi-Fi Direct

Connects the printer and the smart device directly without using an access point.

Related Information

- ➔ [“Connecting by Wi-Fi to the Printer in Simple AP Mode” on page 12](#)
- ➔ [“Making a Wi-Fi Direct Connection to the Printer in Simple AP Mode \(for Android Only\)” on page 15](#)
- ➔ [“Connecting the Printer and Smart Device by Wi-Fi Direct Mode \(for Android Only\)” on page 16](#)

Connecting by Wi-Fi to the Printer in Simple AP Mode

This connection method allows you to use the printer in Simple AP mode and connect devices by Wi-Fi.

Connecting the Printer to a Smart Device

! Important:

- ❑ Devices directly connected to the printer cannot communicate with each other through the printer.
- ❑ Smart devices directly connected to the printer cannot access the Internet through the printer.
- ❑ The printer can be connected by Wi-Fi and Simple AP mode simultaneously. However, if you start a network connection in Simple AP mode when the printer is connected by Wi-Fi, the Wi-Fi is temporarily disconnected.
- ❑ You cannot connect directly by Wi-Fi when the printer is connected to a computer in Ad Hoc mode.

Make the following settings.

Making Simple AP Mode Settings on the Printer

Make Simple AP mode settings from the printer's control panel.

Related Information

➔ [“Simple AP Mode” on page 51](#)

Preparing an Application and Wi-Fi Connection from a Smart Device (Simple AP Mode)

Install Epson iPrint on your smart device, and then connect it to the printer. Epson iPrint is a free application for smart devices. This allows you to print photos and other content from the smart device.

Related Information

➔ [“Preparing an Application and Wi-Fi Connection from a Smart Device \(Simple AP Mode\)” on page 13](#)

Checking the Connection Using Epson iPrint

Check the connection between the printer and the smart device using Epson iPrint.

Related Information

➔ [“Checking the Connection Between the Printer and the Smart Device” on page 18](#)

Preparing an Application and Wi-Fi Connection from a Smart Device (Simple AP Mode)

Connect the smart device to the printer in Simple AP mode.

1. Install Epson iPrint on your smart device.



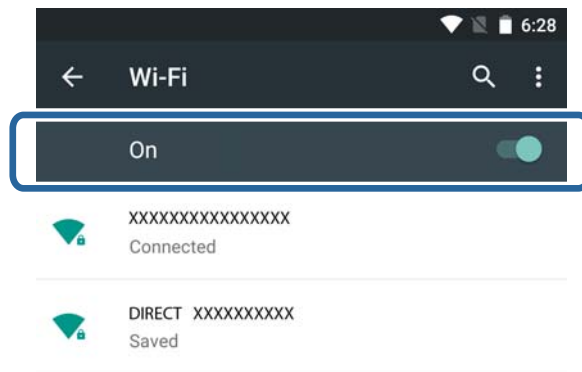
Install Epson iPrint on your smart device from the following URL or QR code.

Connecting the Printer to a Smart Device

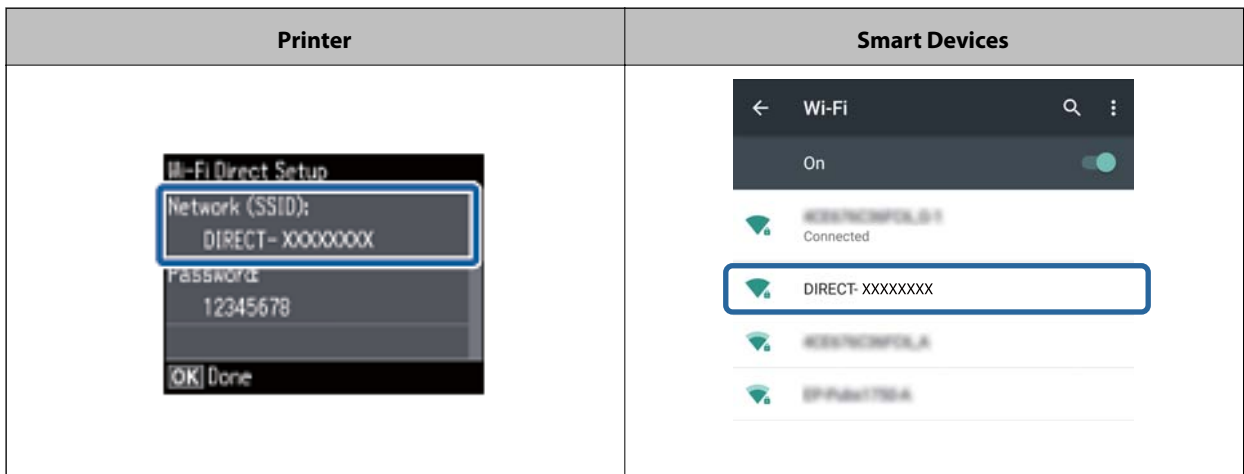
<http://ipr.to>



2. Select Wi-Fi from the settings screen on your smart device, and then enable Wi-Fi.
See the documentation provided with your smart device for the operating instructions.



3. Select **Wi-Fi Setup** on the printer's home screen, and then press the OK button.
4. Select **Wi-Fi Direct Setup**, and then press the OK button.
5. Select **Connection Setup**, and then press the OK button.
6. Press the OK button.
7. Press the OK button to display the SSID.
8. Select the same SSID that is displayed on the printer's control panel on the smart device.



9. Enter the password displayed on the printer's control panel in the smart device and connect.

Connecting the Printer to a Smart Device

10. After the connection is established, press the OK button on the printer's control panel.
 You can check the connection between the printer and the smart device using Epson iPrint.

Related Information

- ➔ “Checking the Connection Between the Printer and the Smart Device” on page 18
- ➔ “Checking the Printer's Network Connection Status” on page 55

Making a Wi-Fi Direct Connection to the Printer in Simple AP Mode (for Android Only)

If you have an Android device that supports Wi-Fi Direct, you can connect the smart device to the printer in Simple AP mode by using Wi-Fi Direct mode on the Android device.

Note:

- Depending on the Android OS version or the model, you may not be able to connect the smart device to the printer by Wi-Fi Direct. The operating procedure is also different.
- If you cannot connect using the following procedure, set the printer to Wi-Fi Direct mode, and then try again.

1. Install Epson iPrint on your smart device.

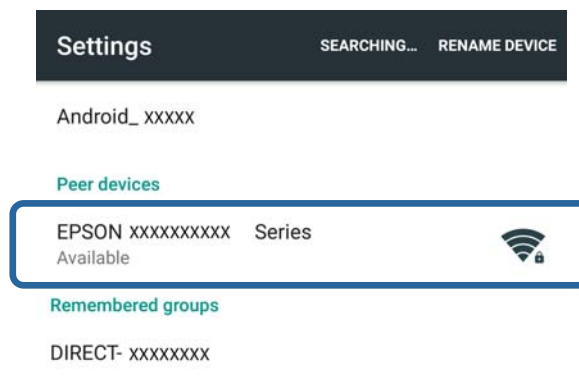


Install Epson iPrint on your smart device from the following URL or QR code.

<http://ipr.to>



2. Open the Wi-Fi Direct settings screen on your smart device. Select the printer's device name, and then connect using Wi-Fi Direct.



Connecting the Printer to a Smart Device

Note:

See the documentation provided with your smart device for the operating instructions.

3. Check the message on the printer's control panel, and then select whether or not to connect to the smart device.
 - To connect
Select **Approve**.
 - If you do not want to connect
Select **Reject**. If you received a connection request from an unknown device, select **Reject**.
4. Select whether or not to register the device information to the printer.
 - To register
Select **Yes**.

When you register the device after selecting **Approve**, the device connects automatically without asking you the next time it connects.

When you register the device after selecting **Reject**, the device is rejected without asking you the next time you try to connect.
 - To reject
Select **No**.

When a connection request is sent from a device to the printer, the connection permission screen is displayed on the printer. Follow step 3 and 4 every time the screen is displayed.

Note:

- If you frequently receive a connection request from an unknown device, we recommend registering this device as a rejected device.
- You can delete the registered device information from **Delete Registered Device in Wi-Fi Setup > Wi-Fi Direct Setup** if you accidentally approve an unwanted device, or reject the device you want to connect. All information for rejected devices and approved devices is deleted.

You can check the connection between the printer and the smart device using Epson iPrint.

Related Information

- ➔ [“Connecting the Printer and Smart Device by Wi-Fi Direct Mode \(for Android Only\)” on page 16](#)
- ➔ [“Checking the Connection Between the Printer and the Smart Device” on page 18](#)
- ➔ [“Checking the Printer's Network Connection Status” on page 55](#)

Connecting the Printer and Smart Device by Wi-Fi Direct Mode (for Android Only)

Connect the smart device to the printer in Wi-Fi Direct mode. The smart device needs to support Wi-Fi Direct to connect. See the documentation provided with your smart device for the operating instructions.

Connecting the Printer to a Smart Device

Important:

- ❑ Smart devices directly connected to the printer cannot access the Internet through the printer.
- ❑ If you start a network connection in Wi-Fi Direct mode when the printer is connected either by Wi-Fi or Simple AP mode, the original connection is disconnected. If you disconnect Wi-Fi Direct mode, the original connection is re-established.
- ❑ Some of the functions (for example, printer firmware updates and Epson Connect setup) are disabled during Wi-Fi Direct connection.
- ❑ You cannot connect directly by Wi-Fi when the printer is connected to a computer in Ad Hoc mode.
- ❑ Use Web Config to make Wi-Fi Direct settings for the printer. To use Web Config, the IP address must be assigned to the printer, and the printer and the smart device must be connected to the same network.

1. Install a printing application on your smart device.

Epson iPrint is used here as an example.

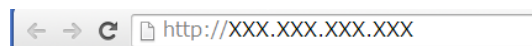


Install Epson iPrint on your smart device from the following URL or QR code.

<http://ipr.to>



2. Check the printer's IP address.
Check the IP address from the network status screen on the printer's control panel or the network status sheet.
3. Run Web Config by entering the printer's IP address in the browser on your smart device.



Note:

See the documentation provided with your smart device for the operating instructions.

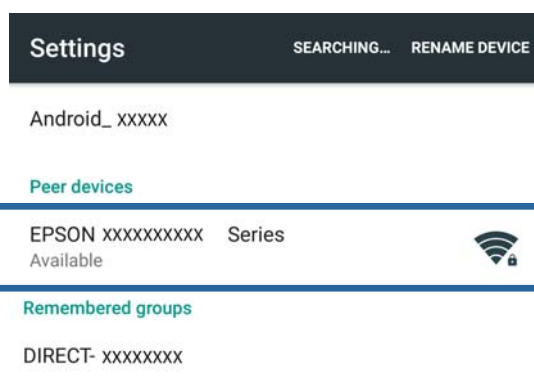
4. Select **Advanced Settings > Services > Wi-Fi Direct**.
5. Select **Connect to the Wi-Fi Direct devices only** from **Connection Mode**.
6. Press **Next**, check the settings, and then press **OK** on the next screen.

Note:

The printer is set to connect in Wi-Fi Direct mode. This setting is available until the next time you change the mode setting. You do not need to make settings every time.

Connecting the Printer to a Smart Device

7. Select **Wi-Fi Setup** on the home screen, and then press the OK button.
8. Select **Wi-Fi Direct Setup**, and then press the OK button.
9. Select **Connection Setup**, and then press the OK button.
10. Press the OK button after checking the message.
11. Press the OK button after checking the message.
12. Connect to the printer by Wi-Fi Direct from the smart device.



Note:

- Wi-Fi Direct mode is disconnected if you turn the printer off or the smart device moves too far from the printer. Repeat steps 7 to 11 each time you want to use the printer.*
- See the documentation provided with your smart device for instructions on connecting from the device using Wi-Fi Direct.*

You can check the connection between the printer and the smart device using Epson iPrint.

Related Information

- ➔ [“Checking the Connection Between the Printer and the Smart Device” on page 18](#)
- ➔ [“Checking the Printer's Network Connection Status” on page 55](#)

Checking the Connection Between the Printer and the Smart Device

Make printer settings from a printing application and check the connection. Epson iPrint is used here as an example.

1. Run Epson iPrint.



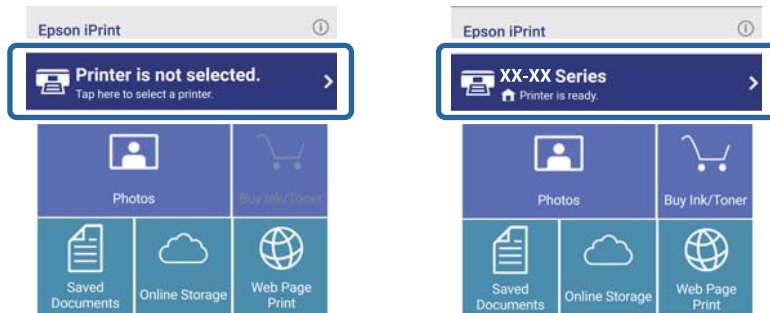
Connecting the Printer to a Smart Device

If Epson iPrint is not installed, install it on your smart device from the following URL or QR code.

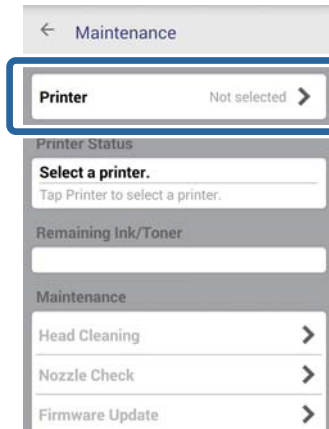
<http://ipr.to>



2. Tap **Printer is not selected.** at the top of the screen, or tap the printer name.



3. Tap **Printer.**



Connecting the Printer to a Smart Device

- Select the printer name you want to connect to.

If the connection is successful, the remaining ink/toner levels are displayed.



Changing the Connection Method Between the Printer and the Smart Device

Follow the steps below to change to the connection method you want to use.

When changing to Wi-Fi, make sure that the smart device is connected to the same Wi-Fi network as the printer. See the documentation provided with your smart device for instructions on making network settings.

When changing the connection method from Wi-Fi Direct mode to Simple AP mode, connect the printer and smart device in Wi-Fi Direct mode and run Web Config. Change the **Connection Mode** to **OFF** or **Simple AP** from **Advanced Settings > Services > Wi-Fi Direct**.

Related Information

- ➔ [“Connecting by Wi-Fi” on page 10](#)
- ➔ [“Connecting by Wi-Fi to the Printer in Simple AP Mode” on page 12](#)
- ➔ [“Making a Wi-Fi Direct Connection to the Printer in Simple AP Mode \(for Android Only\)” on page 15](#)
- ➔ [“Connecting the Printer and Smart Device by Wi-Fi Direct Mode \(for Android Only\)” on page 16](#)
- ➔ [“Checking the Connection Between the Printer and the Smart Device” on page 18](#)

Additional Connections for a Smart Device

- Adding a smart device to the printer that is connected by Wi-Fi.

Connect the smart device and the printer to the same network (SSID). See the documentation provided with your smart device for instructions on making network settings.

- Adding a smart device to the printer in Simple AP mode.

Follow the Simple AP mode connection procedure. You can simultaneously connect up to four Wi-Fi devices in Simple AP mode.

You can check the connection between the printer and the smart device using Epson iPrint.

Connecting the Printer to a Smart Device

Related Information

- ➔ [“Preparing an Application and Wi-Fi Connection from a Smart Device” on page 11](#)
- ➔ [“Preparing an Application and Wi-Fi Connection from a Smart Device” on page 11](#)
- ➔ [“Connecting the Printer and Smart Device by Wi-Fi Direct Mode \(for Android Only\)” on page 16](#)
- ➔ [“Checking the Connection Between the Printer and the Smart Device” on page 18](#)

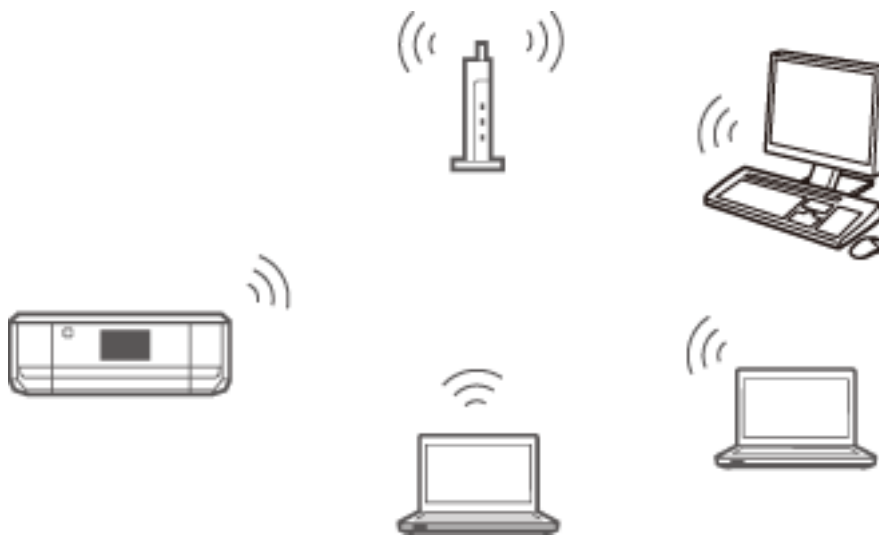
Connecting the Printer and a Computer

Connection Types Between the Printer and a Computer

Use one of the following connection methods to connect the printer to a computer.

Wi-Fi

This connection method is recommended for home or office networks where computers and smart devices are connected by Wi-Fi through an access point.



Related Information

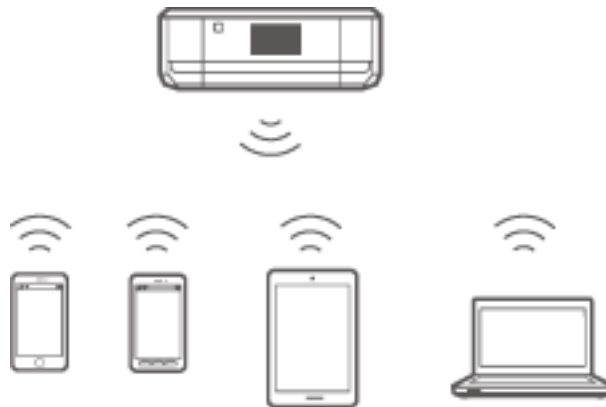
➔ [“Connecting to Wi-Fi” on page 24](#)

Wi-Fi Direct Simple AP Mode

This connection method is recommended when you are not using Wi-Fi for your home or office networks. Some Internet services are unavailable when connecting in Simple AP mode.

Connecting the Printer and a Computer

In this mode, the printer acts as an access point and you can connect up to four devices to the printer. However, devices directly connected to the printer cannot communicate with each other through the printer.



Related Information

➔ [“Connecting in Simple AP Mode \(for Windows Only\)” on page 28](#)

Ad Hoc Mode

You can connect the printer directly to a computer without using an access point. To use this mode, your computer's wireless adapter needs to support Ad Hoc mode. See the documentation provided with the computer for details.

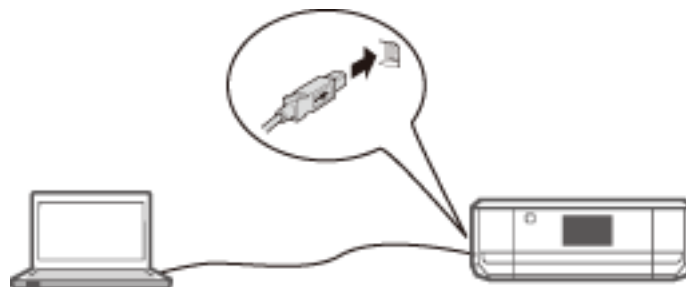


Related Information

➔ [“Connecting in Ad Hoc Mode \(for Windows Only\)” on page 29](#)

USB Connection

Connect the printer to a computer with a USB cable.



Related Information

➔ [“Setting up a USB Connection” on page 30](#)

Connection Settings Between the Printer and a Computer

Make sure you finish setting up the printer before connecting to a computer. (Connecting the power cable, installing ink cartridges, and loading paper.)

Connecting to Wi-Fi

You can set up Wi-Fi on your printer from a computer using one of the following methods.

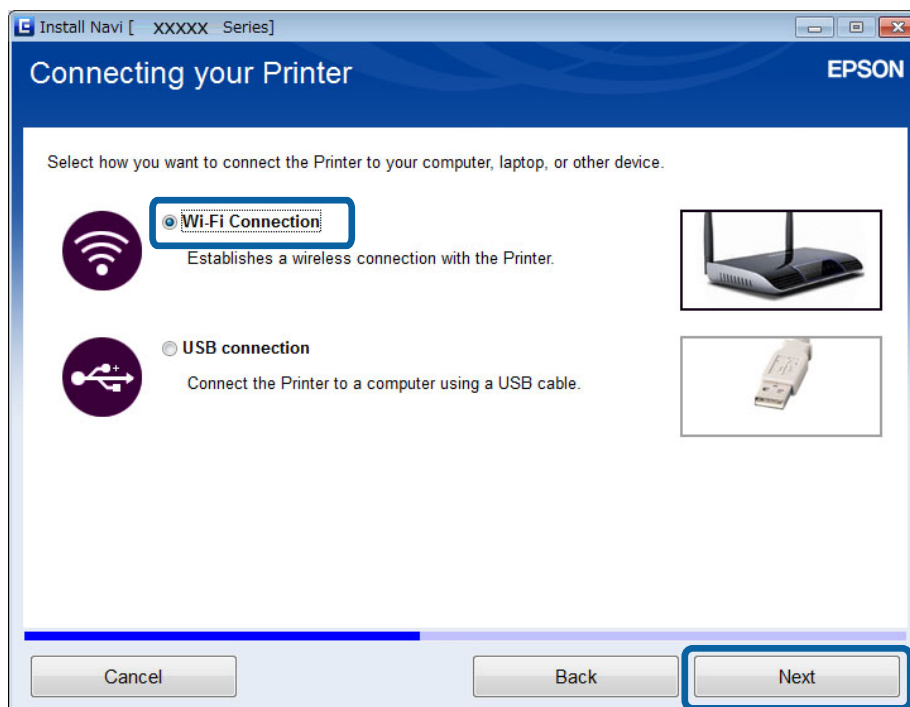
Related Information

- ➔ [“Setting Up a Wi-Fi Connection from the Software Disc \(for Windows Only\)” on page 24](#)
- ➔ [“Setting Up Wi-Fi from the Website” on page 25](#)
- ➔ [“Connecting to Wi-Fi Manually” on page 27](#)

Setting Up a Wi-Fi Connection from the Software Disc (for Windows Only)

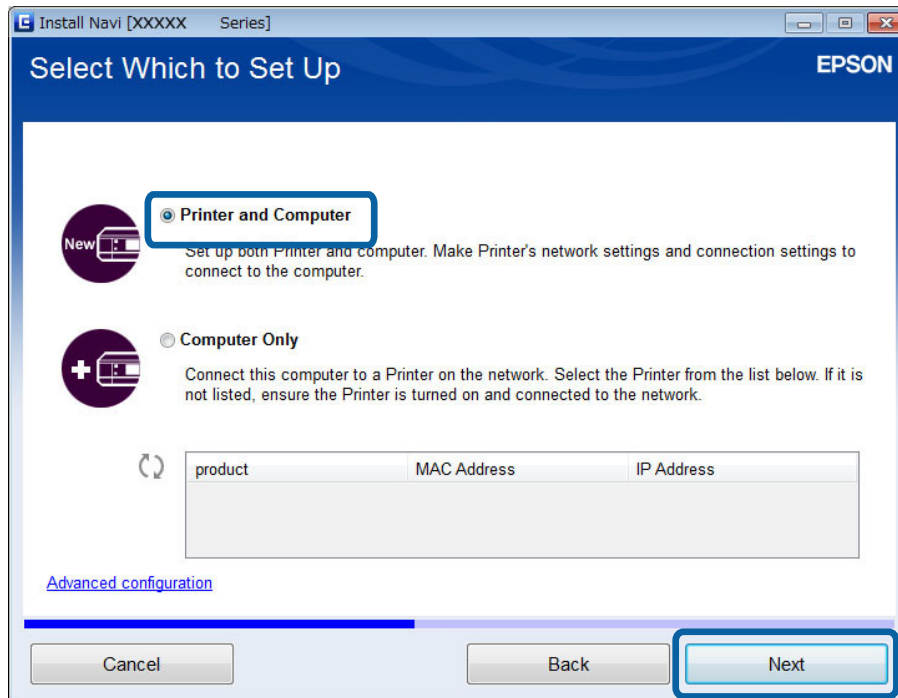
This method is recommended for Windows users to automatically set up a connection.

1. Insert the software disc supplied with the printer into the computer.
2. Follow the on-screen instructions.
3. Select **Wi-Fi Connection** on the Connecting your Printer screen.



Connecting the Printer and a Computer

4. Select **Printer and Computer** on the Select Which to Set Up screen.



5. Follow the on-screen instructions.

Setting Up Wi-Fi from the Website

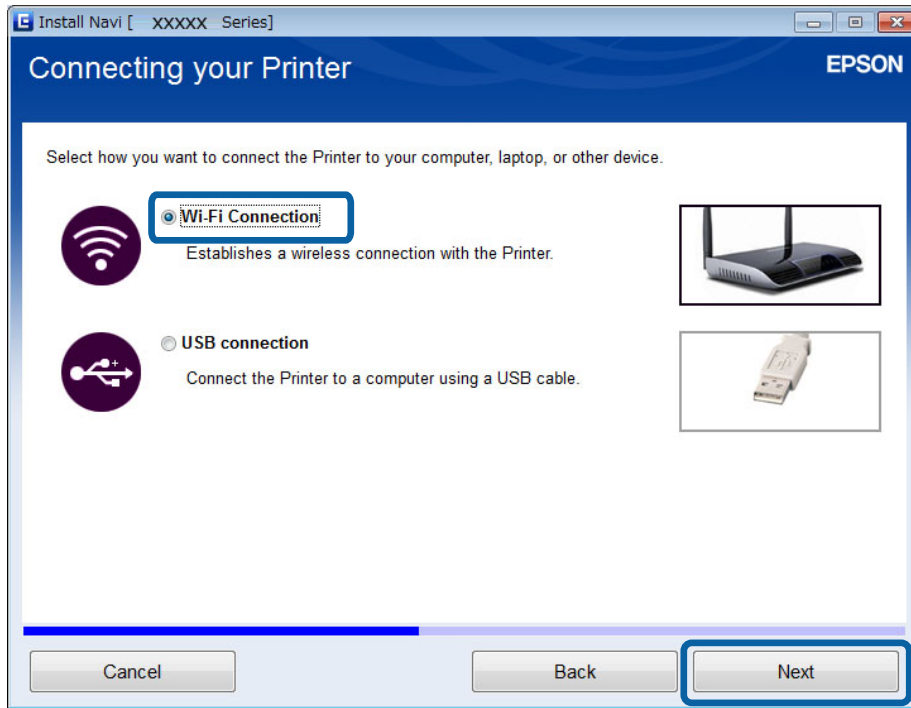
This method is for Mac OS X users or if you cannot use the software disc.

1. Access the following website, and then enter the product's model number.
<http://epson.sn>
2. Go to **Setup**, and then download the software.
3. Run the software, and then follow the on-screen instructions.

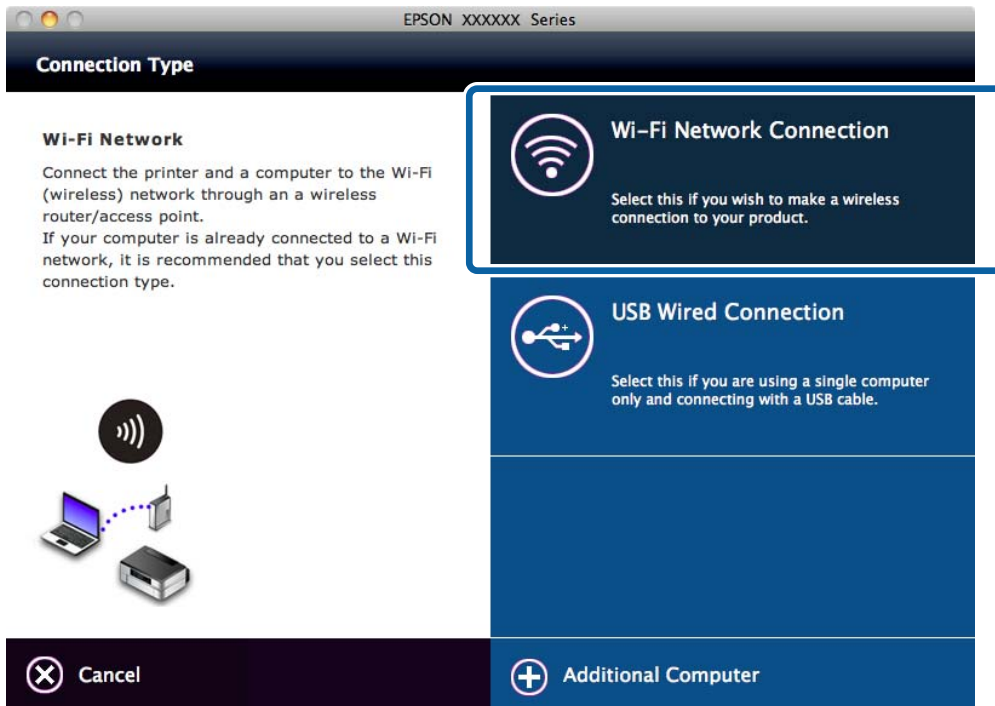
Connecting the Printer and a Computer

4. Select Wi-Fi on the following screen.

❑ Windows



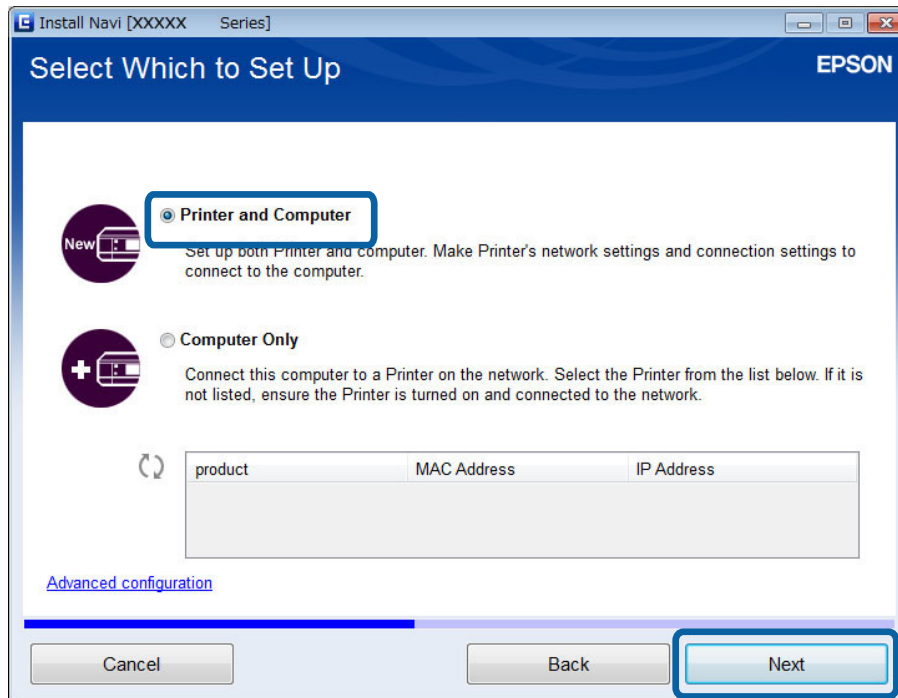
❑ Mac OS X



Follow the on-screen instructions.

Connecting the Printer and a Computer

5. Select **Printer and Computer** on the Select Which to Set Up screen. (for Windows only)



Follow the on-screen instructions.

Connecting to Wi-Fi Manually

This method allows you to install essential software by making network settings on the printer's control panel. Set up the following.

Connecting the Printer to Wi-Fi

You can set up Wi-Fi from the printer's control panel using one of the following methods.

- Wi-Fi Setup Wizard
- Push Button Setup (WPS)
- PIN Code Setup (WPS)

Set up Printer Driver

Install the printer driver from the following website.

<http://epson.sn> > **Additional Software**

Install EPSON Scan from the following website

- Install EPSON Scan from the following website.

<http://epson.sn> > **Additional Software**

- Make connection settings from EPSON Scan Settings.

Related Information

- ➔ [“Setting Up Manually” on page 44](#)

Connecting the Printer and a Computer

- ➔ “Setting Up Automatically by Pressing a Button (WPS)” on page 47
- ➔ “PIN Code Setup (WPS)” on page 49
- ➔ “Ports and Protocols” on page 84
- ➔ “Connecting a Scanner to the Network” on page 90

Connecting the Printer and a Computer Directly

Connecting in Simple AP Mode (for Windows Only)

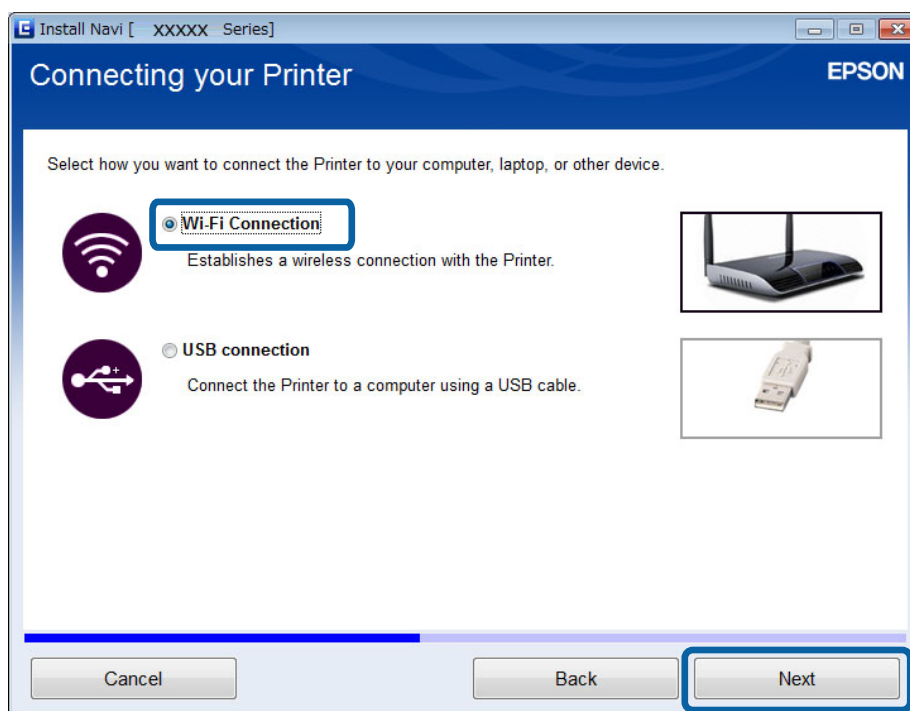
You can connect the printer directly to a computer using Simple AP mode. If you have an access point, we recommend you connect using Wi-Fi.

1. Set the printer to Simple AP mode.
2. Connect the computer to the SSID for Simple AP mode.

Note:

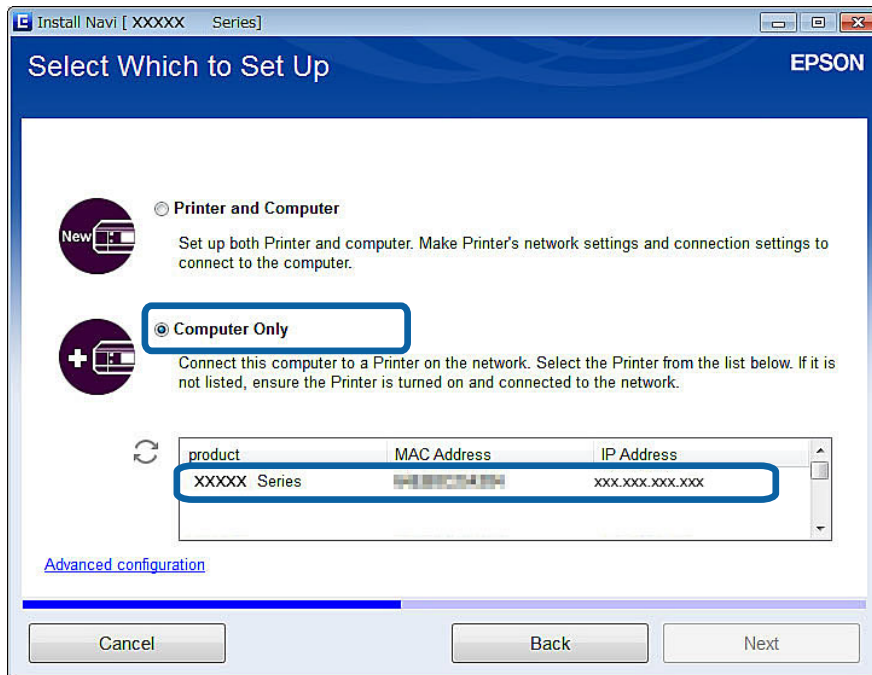
See the documentation provided with your computer for the operating instructions.

3. Insert the software disc supplied with the printer into the computer.
4. Select **Wi-Fi Connection** on the Connecting your Printer screen.



Connecting the Printer and a Computer

5. Select **Computer Only** on the Select Which to Set Up screen.



6. Follow the on-screen instructions.

Related Information

➔ [“Simple AP Mode” on page 51](#)

Connecting in Ad Hoc Mode (for Windows Only)

You can connect the printer directly to a computer using Ad Hoc mode.

! Important:

- ❑ *The computer's Wi-Fi adapter needs to support Ad Hoc mode.*
- ❑ *Windows 8 and later operating systems do not support Ad Hoc mode.*

Note:

- ❑ *If the computer is connected to an access point, we recommend connecting the printer using Wi-Fi.*
- ❑ *We recommend setting the printer to automatically obtain the IP address. This allows the computer to assign a valid IP address to the printer so that you do not have to obtain an IP address manually.*
- ❑ *Ad Hoc mode does not provide strong security. The printer is only capable of WEP security.*

1. Follow the steps on the computer to set up an Ad Hoc network from your computer.
2. Insert the software disc supplied with the printer into the computer.
3. Follow the on-screen instructions.

Connecting the Printer and a Computer

Setting up a USB Connection

You can connect the printer to a computer using one of the following methods.

! *Important:*

When you install the printer driver, the on-screen instructions show you how to connect a USB cable. Do not connect the USB cable until you are instructed to do so.

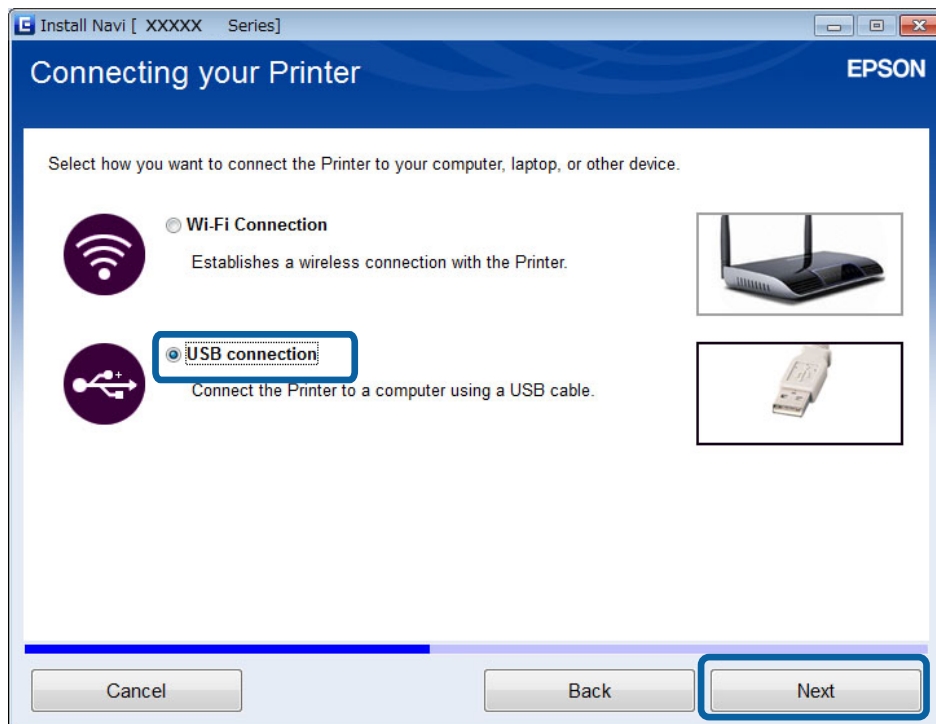
Related Information

- ➔ [“Setting up a USB Connection from the Software Disc \(for Windows Only\)” on page 30](#)
- ➔ [“Setting up a USB Connection from the Website” on page 30](#)
- ➔ [“Setting Up a USB Connection Manually” on page 32](#)

Setting up a USB Connection from the Software Disc (for Windows Only)

This is an automatic connection method for Windows users.

1. Insert the software disc supplied with the printer into the computer.
2. Follow the on-screen instructions.
3. Select **USB connection** on the Connecting your Printer screen.



4. Follow the on-screen instructions.

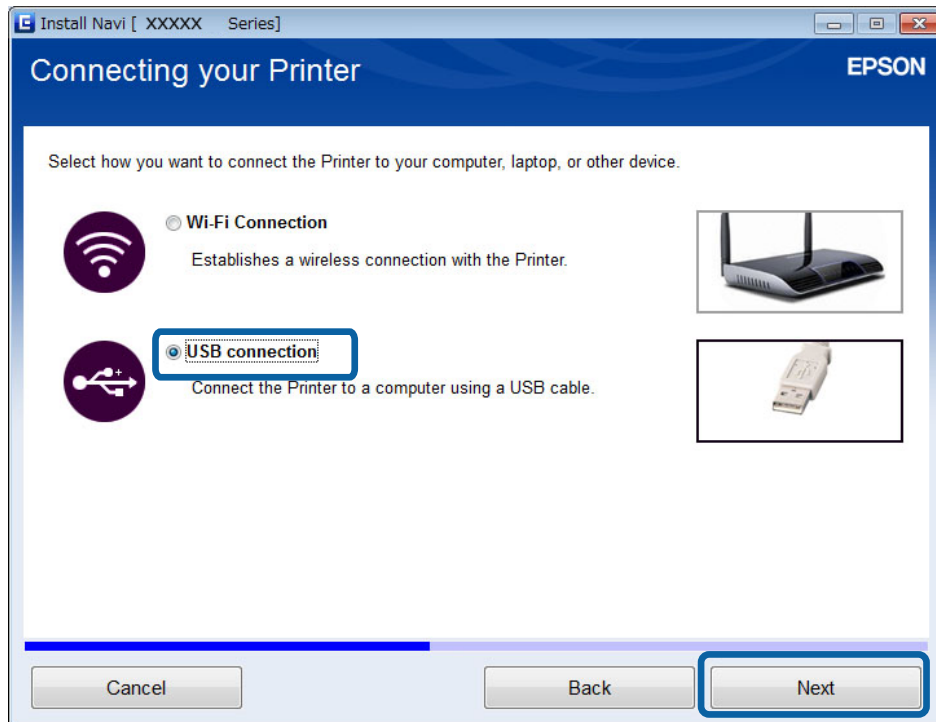
Setting up a USB Connection from the Website

This method is for Mac OS X users or if you cannot use the software disc.

Connecting the Printer and a Computer

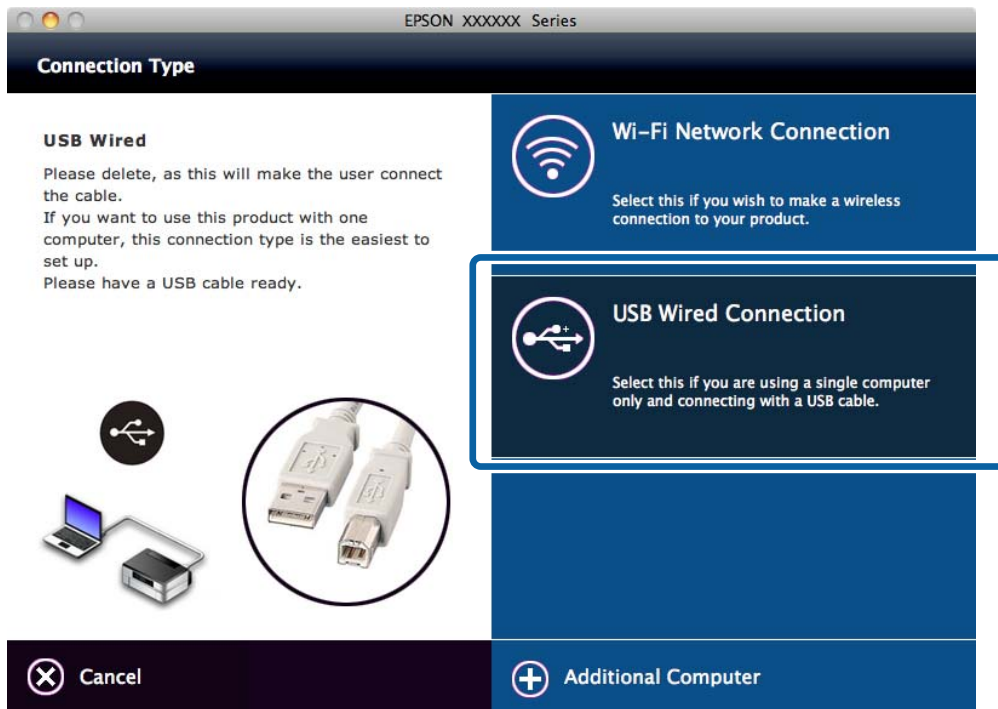
1. Access the following website, and then enter the product's model number.
<http://epson.sn>
2. Go to **Setup**, and then download the software.
3. Run the software, and then follow the on-screen instructions.
4. Select USB on the following screen.

Windows



Connecting the Printer and a Computer

Mac OS X



5. Follow the on-screen instructions.

Setting Up a USB Connection Manually

Set up the following.

Set up Printer Driver

Install the printer driver from the following website.

<http://epson.sn> > **Additional Software**

Set up EPSON Scan

Install EPSON Scan from the following website.

<http://epson.sn> > **Additional Software**

Related Information

- ➔ “Ports and Protocols” on page 84
- ➔ “Connecting a Scanner to the Network” on page 90

Changing a Connection Method Between the Printer and a Computer

You can use a different connection method when changing the network environment or adding another network.

Connecting the Printer and a Computer

Replacing or Adding New Access Points

If the SSID changes due to the replacement of an access point, or an access point is added and a new network environment is established, reset the Wi-Fi settings. If the SSID changes, you can use the same setup procedure as [Changing the Printer Connection to Wi-Fi].

Related Information

- ➔ “Connecting to Wi-Fi” on page 24
- ➔ “Changing the Printer Connection to Wi-Fi” on page 33

Changing the Printer Connection to Wi-Fi

Follow the steps below to change the connection method to Wi-Fi from USB or Ad Hoc mode.

Changing to a Wi-Fi Connection - Windows

The following is an example of when the print port is set as EpsonNet Print.

1. Connect the computer to the SSID for the access point that you want to connect to.
2. Insert the software disc supplied with the printer into the computer.

Note:

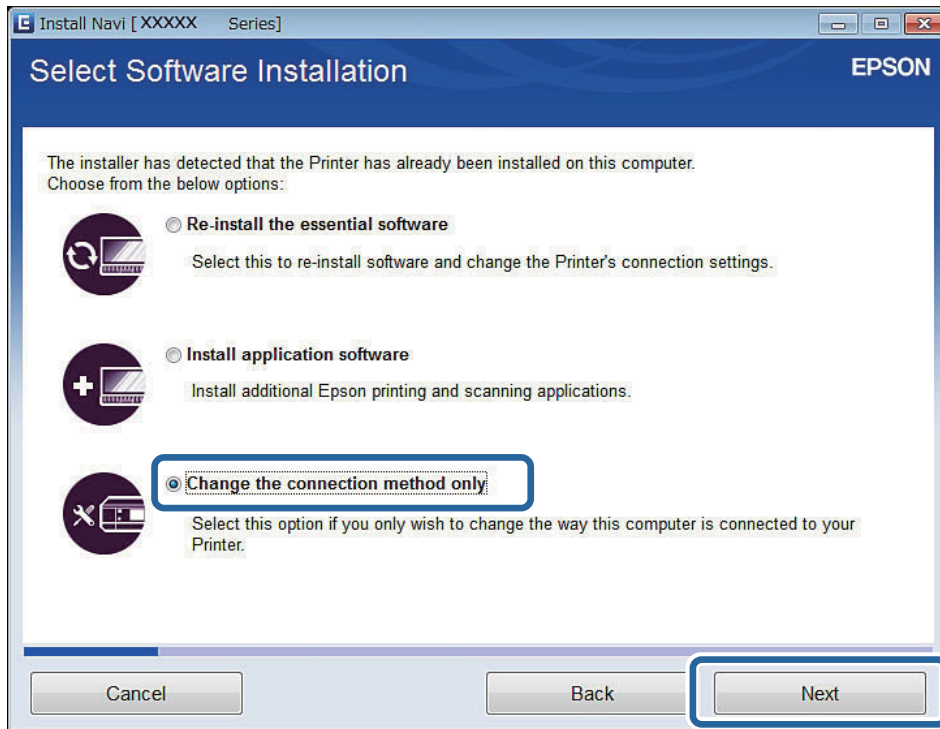
*If you cannot use the software disc, access the following website, and then download the software from **Setup** and make the connection settings. This software operates in the same way as the software disc.*

<http://epson.sn>

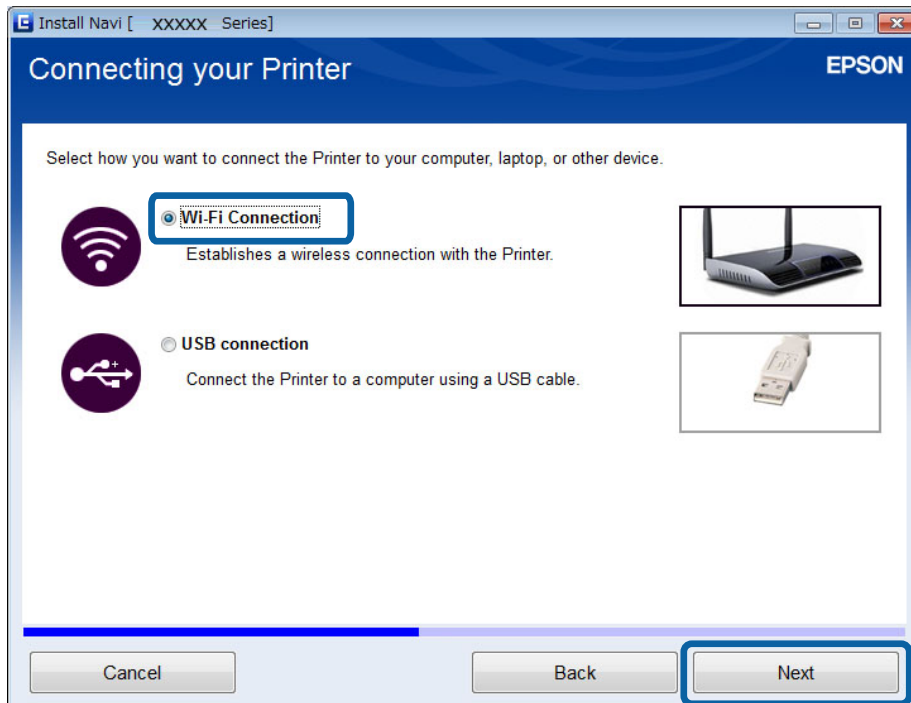
3. Follow the on-screen instructions.

Connecting the Printer and a Computer

4. Select **Change the connection method only** on the Select Software Installation screen.

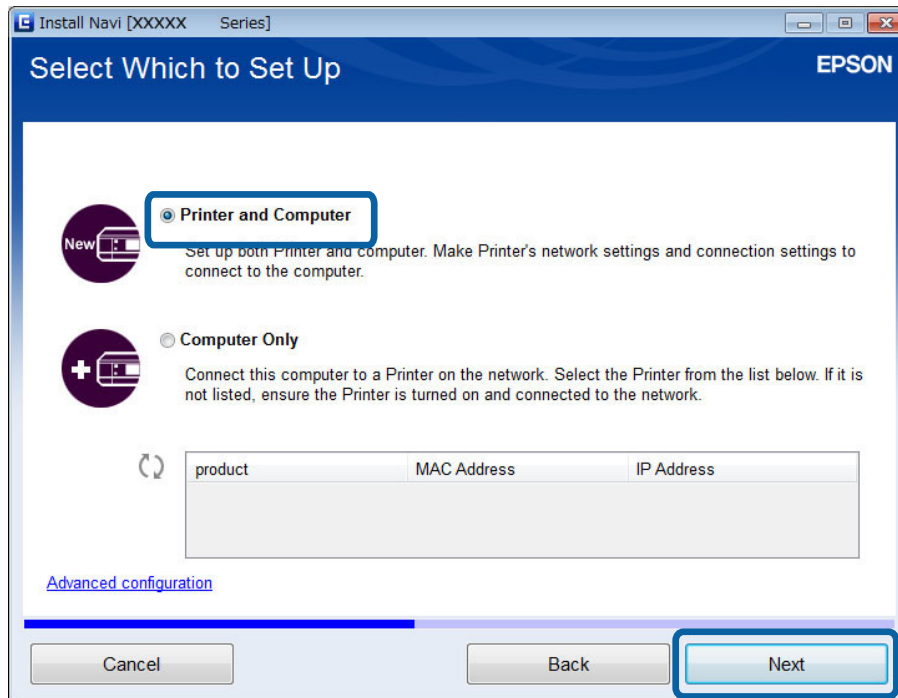


5. Select **Wi-Fi Connection** on the Connecting your Printer screen.



Connecting the Printer and a Computer

6. Select **Printer and Computer** on the Select Which to Set Up screen.



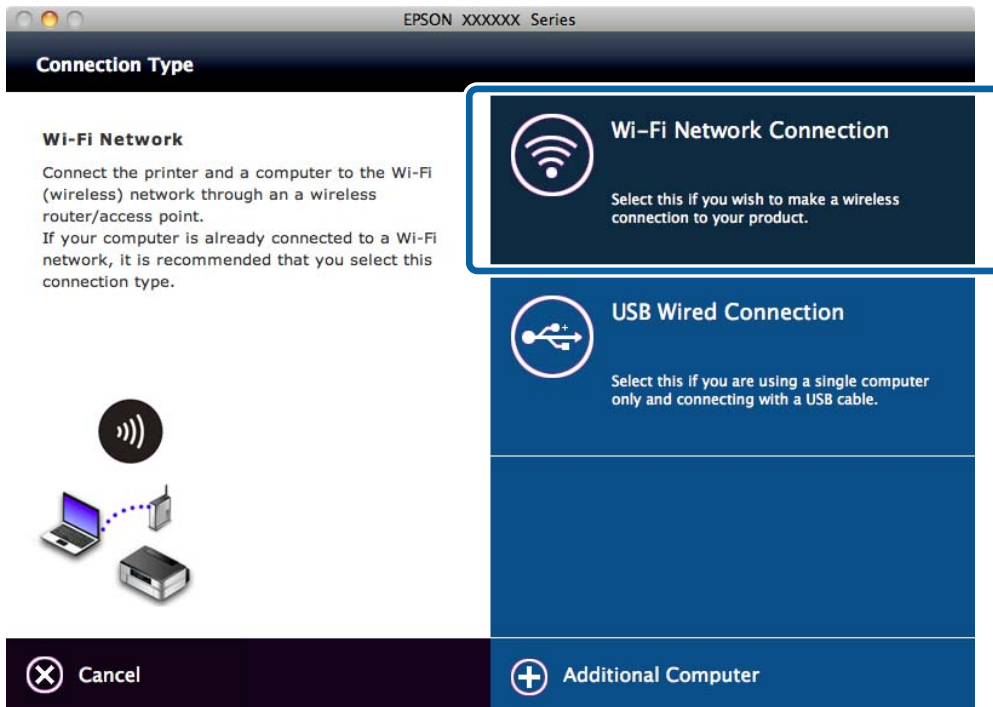
7. Follow the on-screen instructions.

Changing to a Wi-Fi Connection – Mac OS X

1. Access the following website, and then enter the product's model number.
<http://epson.sn>
2. Go to **Setup**, and then download the software.
3. Run the software, and then follow the on-screen instructions.

Connecting the Printer and a Computer

4. Select **Wi-Fi Network Connection** on the Connection Type screen.



5. Follow the on-screen instructions.

Adding a USB Connection to the Printer

You can connect the printer and a computer with a USB cable when the printer is connected to Wi-Fi. You can add a USB connection even when the printer is on a network.

Adding a USB Connection - Windows

1. Insert the software disc supplied with the printer into the computer.

Note:

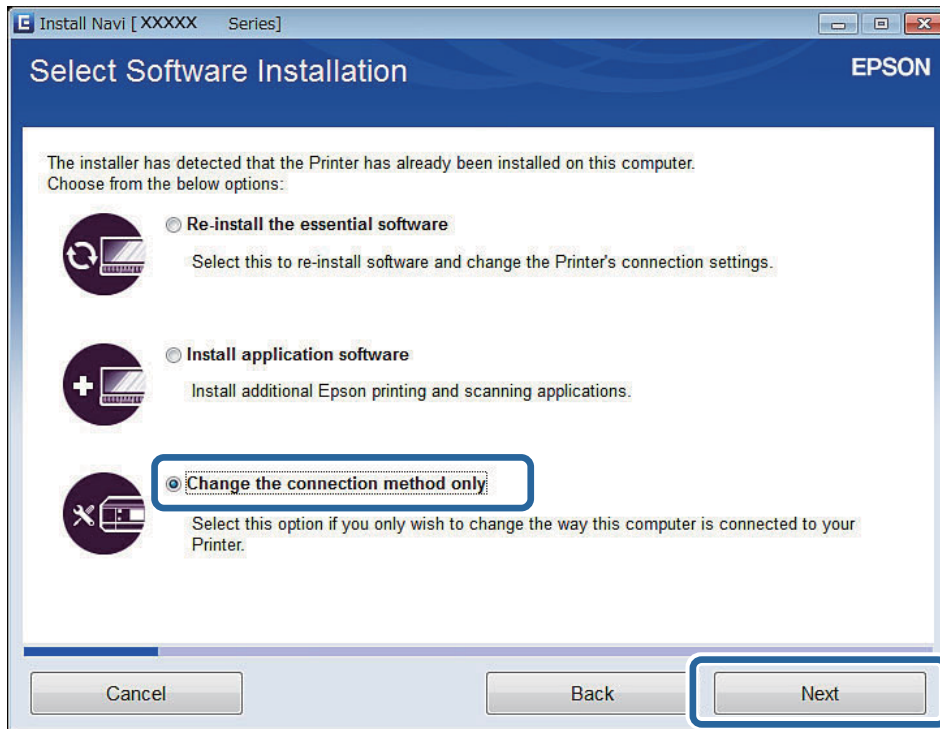
If you cannot use the software disc, access the following website, and then download the software and make the connection settings. This software operates in the same way as the software disc.

<http://epson.sn>

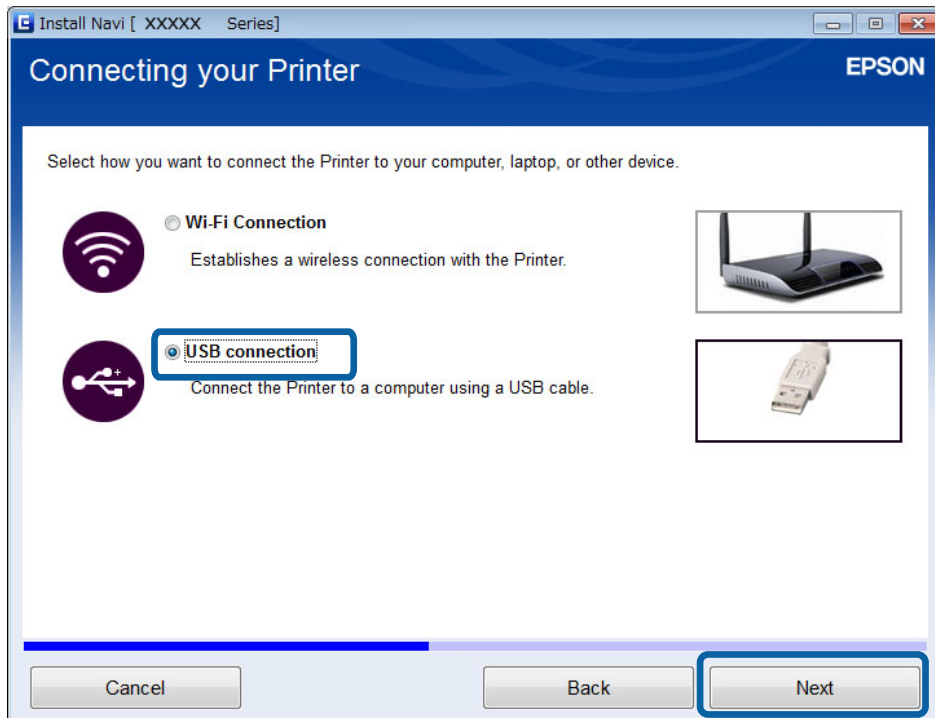
2. Follow the on-screen instructions.

Connecting the Printer and a Computer

3. Select **Change the connection method only** on the Select Software Installation screen.



4. Select **USB connection** on the Connecting your Printer screen.



5. Follow the on-screen instructions.

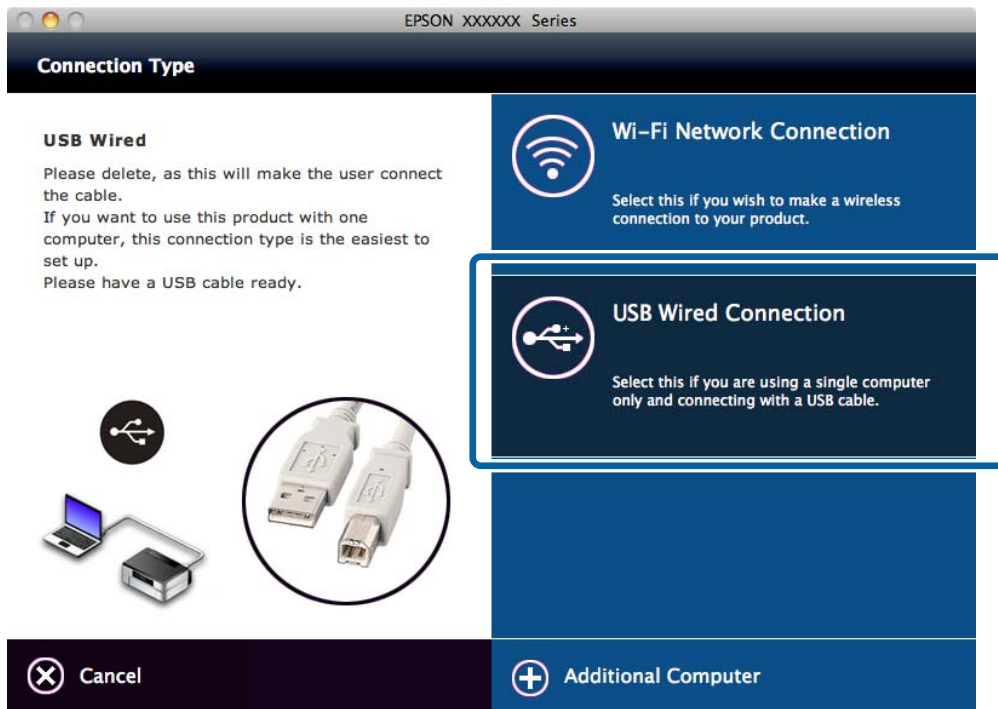
Related Information

- ➔ “Combinations that can be Connected at the Same Time” on page 83

Connecting the Printer and a Computer

Adding a USB Connection - Mac OS X

1. Access the following website, and then enter the product's model number.
<http://epson.sn>
2. Go to **Setup**, and then download the software.
3. Run the software, and then follow the on-screen instructions.
4. Select **USB Wired Connection** on the Connection Type screen.



5. Follow the on-screen instructions.

Related Information

➔ [“Combinations that can be Connected at the Same Time” on page 83](#)

Adding Computers

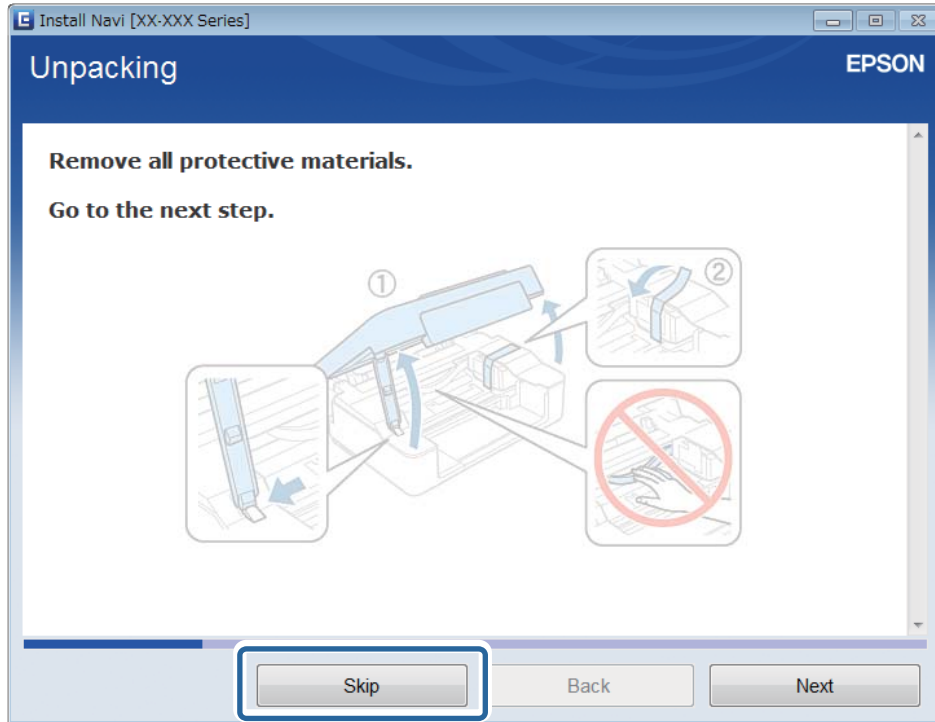
You can set up the printer as a network printer that can be used from another computer.

Adding Computers Using the Software Disc (for Windows Only)

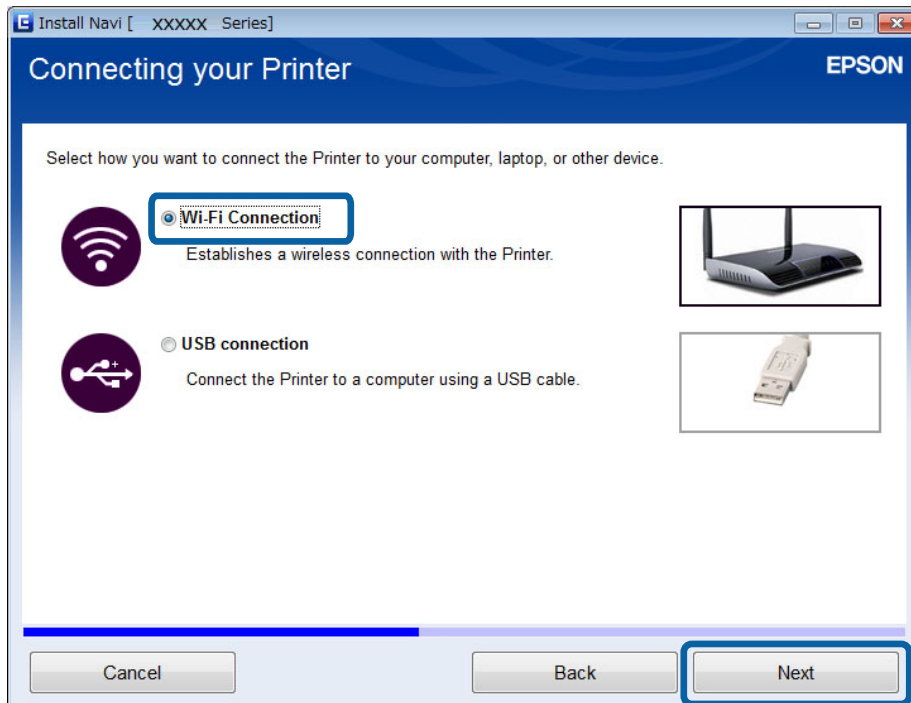
1. Insert the software disc supplied with the printer into the computer you want to add.
Follow the on-screen instructions until the screen in step 2 is displayed.

Connecting the Printer and a Computer

- When the printer's setup instructions screen is displayed, select **Skip**.



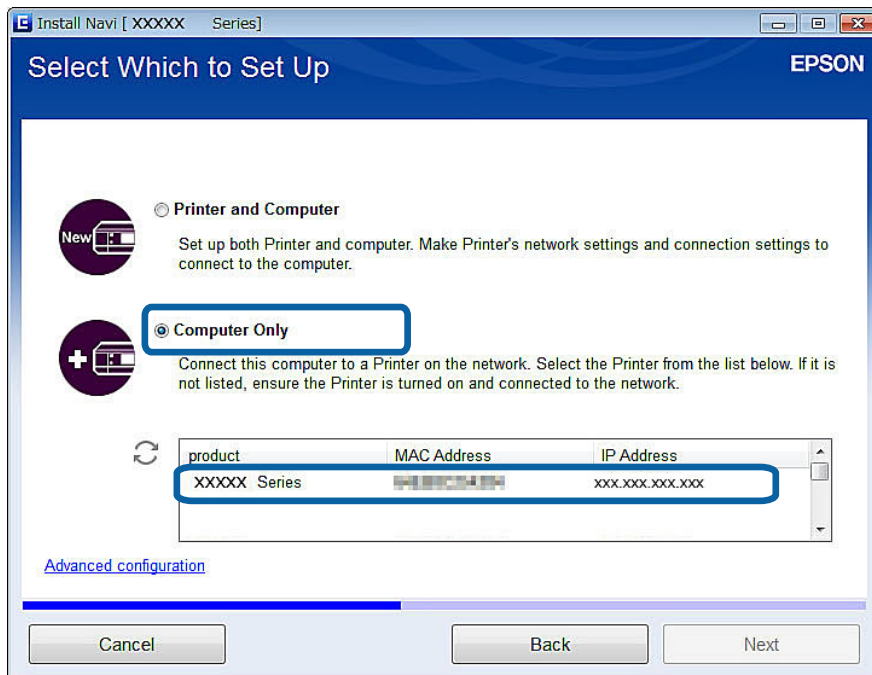
- Select **Wi-Fi Connection** on the Connecting your Printer screen.



Note:
Select the connection according to your printer's connection setup.

Connecting the Printer and a Computer

4. Select **Computer Only** on the Select Which to Set Up screen, and then select the printer you want to connect to from the list.



5. Follow the on-screen instructions.

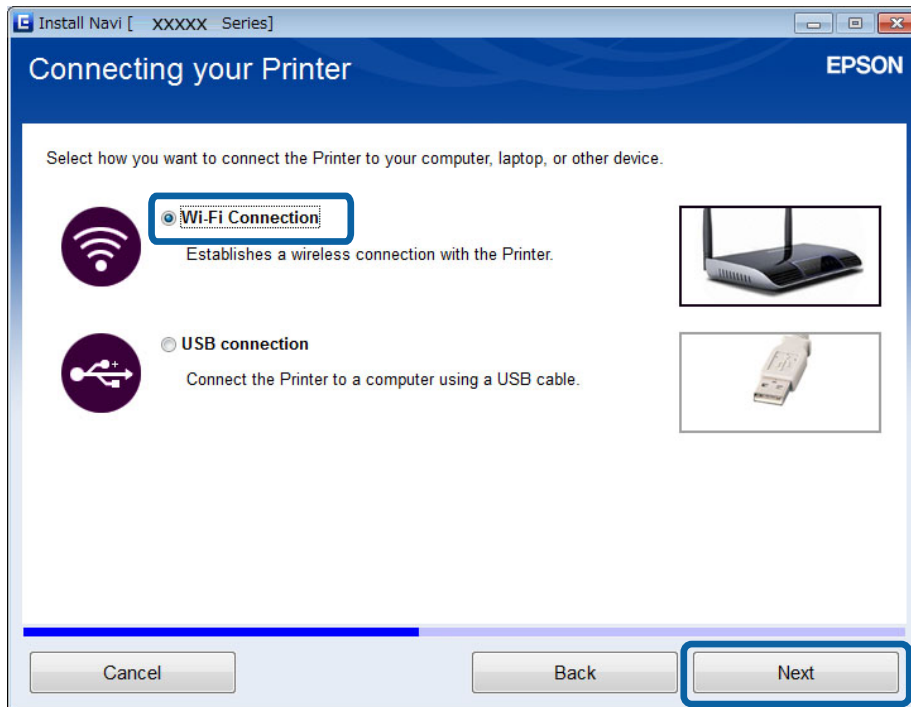
Adding Computers from the Website - Windows

Download the software from the website, and then make connection settings for adding a computer.

1. Access the following website from the computer you want to add, and then enter the product's model number.
<http://epson.sn>
2. Go to **Setup**, and then download the software.
3. Run the software, and then follow the on-screen instructions.
Follow the on-screen instructions until the screen of step 4 is displayed.

Connecting the Printer and a Computer

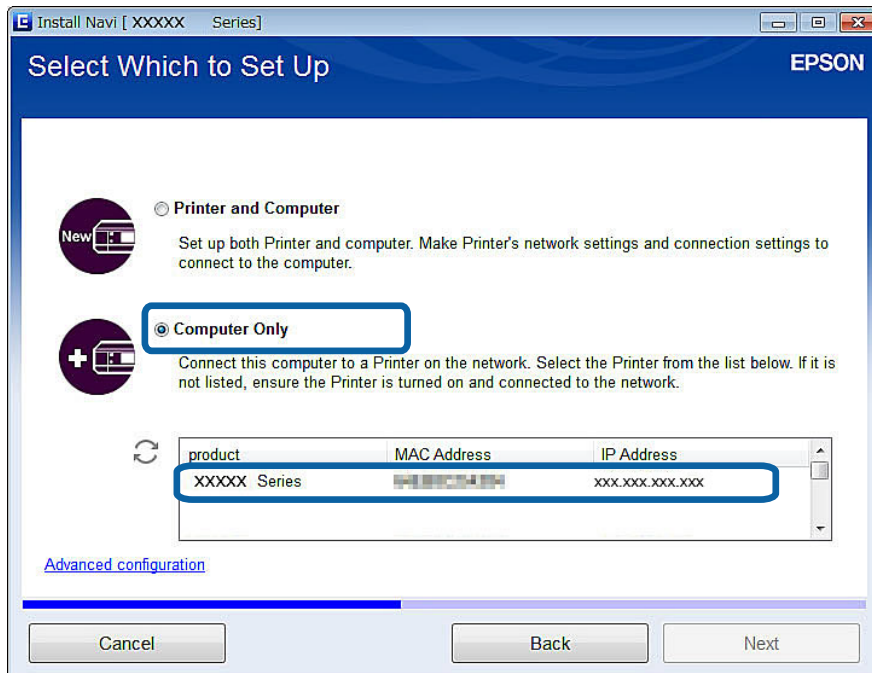
4. Select **Wi-Fi Connection** on the Connecting your Printer screen.



Note:

Select the connection according to your printer's connection setup.

5. Select **Computer Only** on the Select Which to Set Up screen, and then select the printer you want to connect to from the list.



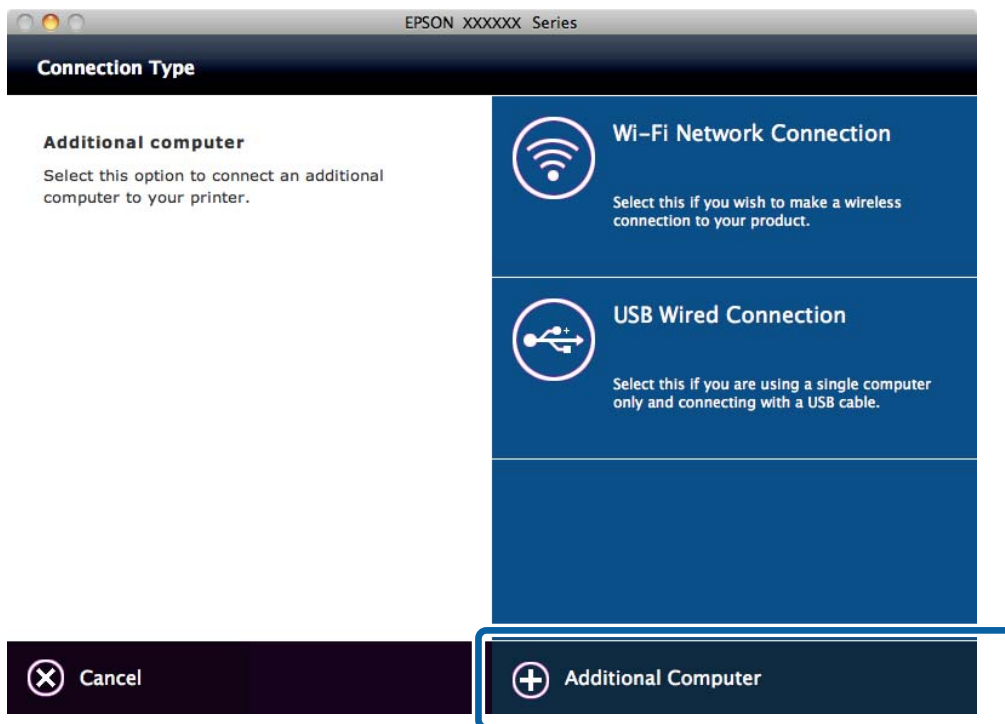
6. Follow the on-screen instructions.

Connecting the Printer and a Computer

Adding Computers from the Website - Mac OS X

Download the software from the website, and then make connection settings for adding a computer.

1. Access the following website from the computer you want to add, and then enter the product's model number.
<http://epson.sn>
2. Go to **Setup**, and then download the software.
3. Run the software, and then follow the on-screen instructions.
4. Select **Additional Computer** on the Connection Type screen.



5. Follow the on-screen instructions.

Adding Computers Manually - Windows

Set up the following.

- Connect the computer to the same network (SSID) as the printer.
- Install the printer driver from the following website.
<http://epson.sn> > **Additional Software**
- Install EPSON Scan from the following website.
<http://epson.sn> > **Additional Software**
- Make connection settings from EPSON Scan Settings.

Related Information

- ➔ [“Connecting a Scanner to the Network” on page 90](#)

Connecting the Printer and a Computer

Adding Computers Manually - Mac OS X

Set up the following.

- Connect the computer to the same network (SSID) as the printer.
- Add the printer from the following website.

<http://epson.sn> > **Support**

Making Wi-Fi Network Settings from the Printer's Control Panel

Related Information

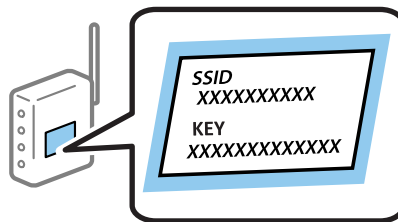
- ➔ “Setting Up Manually” on page 44
- ➔ “Setting Up Automatically by Pressing a Button (WPS)” on page 47
- ➔ “PIN Code Setup (WPS)” on page 49
- ➔ “Simple AP Mode” on page 51
- ➔ “Adding Computers” on page 38

Setting Up Manually

You can manually set up the information necessary to connect to an access point from the printer's control panel. To set up manually, you need the SSID and password for an access point.

Note:

If you are using an access point with its default settings, the SSID and password are on the label. If you do not know the SSID and password, contact the person who set up the access point, or see the documentation provided with the access point.

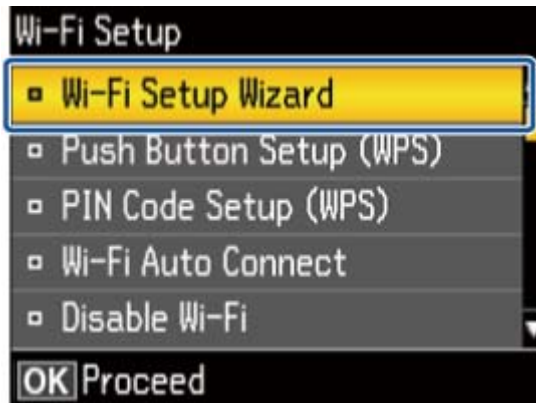


1. Select **Wi-Fi Setup** on the home screen, and then press the OK button.

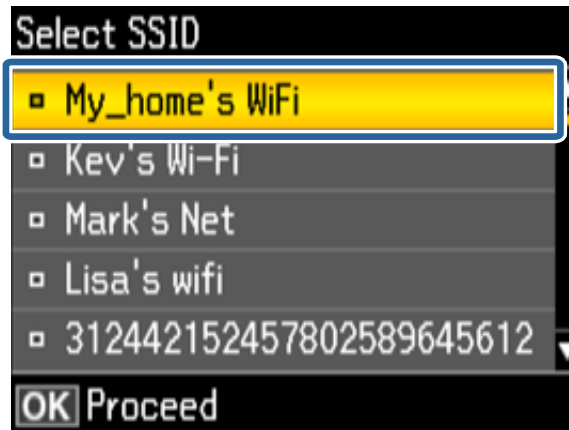


Making Wi-Fi Network Settings from the Printer's Control Panel

2. Select **Wi-Fi Setup Wizard**, and then press the OK button.



3. Select the SSID for the access point from printer's control panel, and then press the OK button.



Note:

- ❑ If the SSID you want to connect to is not displayed on the printer's control panel, select **Other SSIDs**, and then enter the SSID directly.
- ❑ If you do not know the SSID, check if it is written on the label of the access point. If you are using the access point with its default settings, use the SSID written on the label.

4. Enter the password, and then select **Done**. Press the OK button.



Making Wi-Fi Network Settings from the Printer's Control Panel

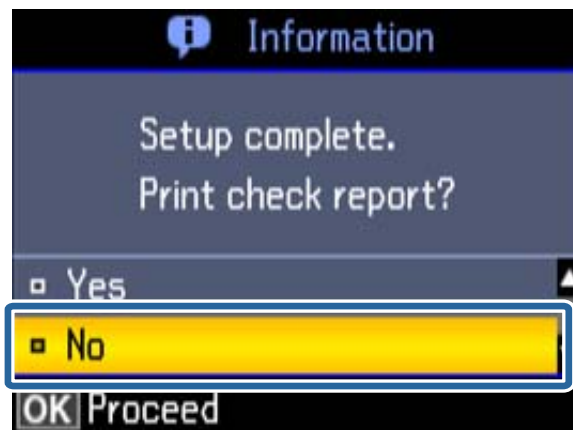
Note:

- ❑ The password is case-sensitive.
- ❑ If you do not know the password, check if it is written on the label of the access point. If you are using the access point with its default settings, use the password written on the label. The password may also be called a “Key”, a “Passphrase”, and so on.
- ❑ If you do not know the password for the access point, see the documentation provided with the access point, or contact the person who set it up.


5. Check the settings, and then press the OK button.



6. Select whether or not you print a network status report after finishing the settings.



Note:

If you fail to connect, load A4 size plain paper, and then print a connection report. Select **Yes**, press the OK button, and then press the  button.

To connect a smart device, use Epson iPrint to configure the printer.

To connect a computer, make connection settings for adding a computer.

Related Information

- ➔ “Messages and Solutions on the Network Connection Report” on page 69
- ➔ “Preparing an Application and Wi-Fi Connection from a Smart Device” on page 11
- ➔ “Adding Computers” on page 38

Setting Up Automatically by Pressing a Button (WPS)

You can automatically set up a Wi-Fi network by pressing a button on the access point. If the following conditions are met, you can set up by using this method.

- ❑ The access point is compatible with WPS (Wi-Fi Protected Setup).
- ❑ The current Wi-Fi connection was established by pressing a button on the access point.

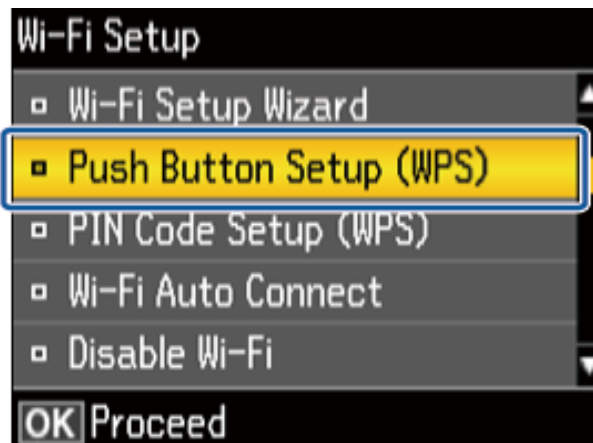
Note:

If you cannot find the button or you are setting up using the software, see the documentation provided with the access point.

1. Select **Wi-Fi Setup** on the home screen, and then press the OK button.



2. Select **Push Button Setup (WPS)**, and then press the OK button.



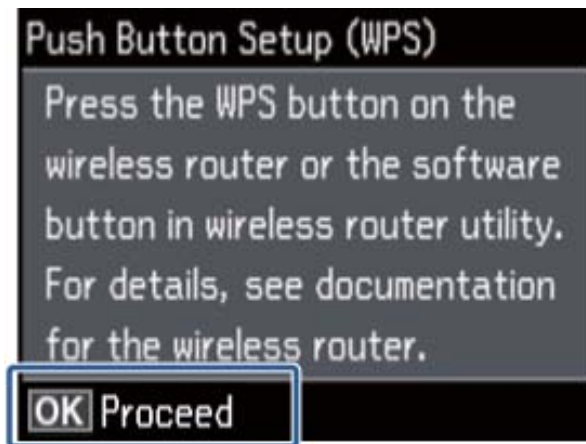
Making Wi-Fi Network Settings from the Printer's Control Panel

3. Hold down the [WPS] button on the access point until the security light flashes.



If you do not know where the [WPS] button is, or there are no buttons on the access point, see the documentation provided with your access point for details.

4. Press the OK button on the printer's control panel.



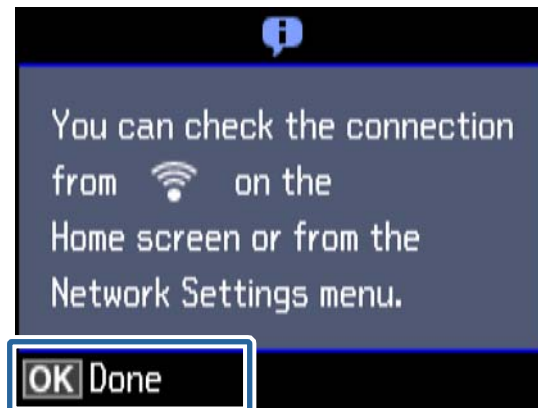
5. Press the OK button.



The screen automatically proceeds after a specific length of time if you do not press the OK button.

Making Wi-Fi Network Settings from the Printer's Control Panel

6. Press the OK button.



The screen automatically closes after a specific length of time if you do not press the OK button.

If an error screen is displayed, make network settings again.

To connect a smart device, use Epson iPrint to configure the printer.

To connect a computer, make connection settings for adding a computer.

Related Information

- ➔ [“Messages and Solutions on the Network Connection Report” on page 69](#)
- ➔ [“Preparing an Application and Wi-Fi Connection from a Smart Device” on page 11](#)
- ➔ [“Adding Computers” on page 38](#)

PIN Code Setup (WPS)

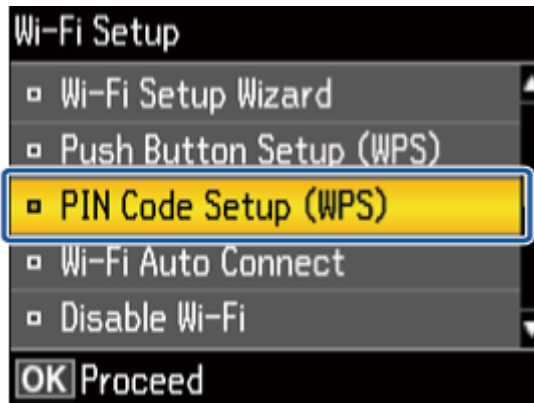
You can automatically connect to an access point by using a PIN code. You can use this method to set up if an access point is capable of WPS (Wi-Fi Protected Setup). Use a computer to enter a PIN code into the access point.

1. Select **Wi-Fi Setup** on the home screen and then press the OK button.

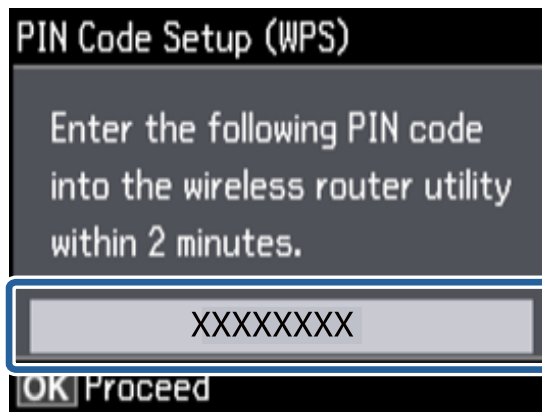


Making Wi-Fi Network Settings from the Printer's Control Panel

2. Select **PIN Code Setup (WPS)** and then press the OK button.



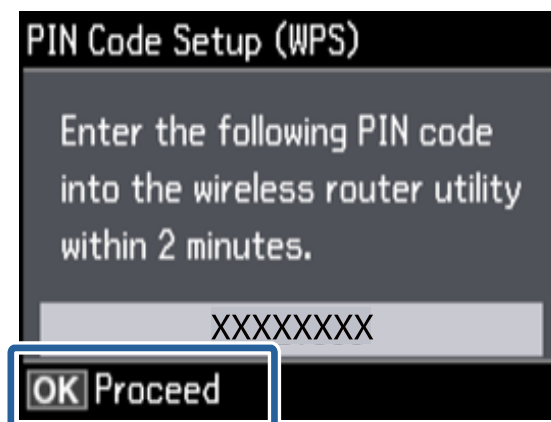
3. Use your computer to enter the PIN code (an eight digit number) displayed on the printer's control panel into the access point within two minutes.



Note:

See the documentation provided with your access point for details on entering a PIN code.

4. Press the OK button.



Setup is complete when the setup completion message is displayed.

Note:

If connection fails, restart the access point, move it closer to the printer, and try again. If it still does not work, print a connection report and check the solution.

Making Wi-Fi Network Settings from the Printer's Control Panel

To connect a smart device, use Epson iPrint to configure the printer.

To connect a computer, make connection settings for adding a computer.

Related Information

- ➔ [“Messages and Solutions on the Network Connection Report” on page 69](#)
- ➔ [“Preparing an Application and Wi-Fi Connection from a Smart Device” on page 11](#)
- ➔ [“Adding Computers” on page 38](#)

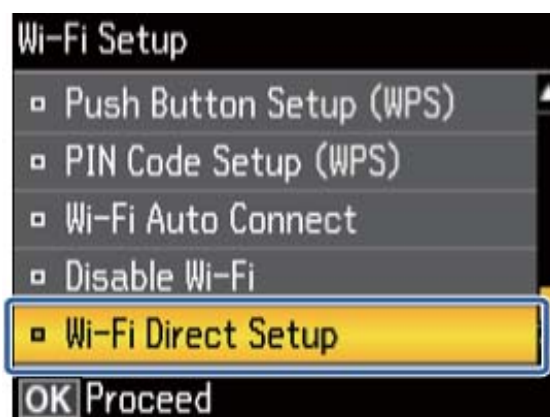
Simple AP Mode

This method allows you to connect the printer directly to devices without an access point. The printer acts as an access point.

1. Select **Wi-Fi Setup** on the home screen, and then press the OK button.



2. Select **Wi-Fi Direct Setup**, and then press the OK button.



Making Wi-Fi Network Settings from the Printer's Control Panel

3. Select **Connection Setup**, and then press the OK button.



4. Press the OK button.



5. Press the OK button.



Making Wi-Fi Network Settings from the Printer's Control Panel

6. Check the SSID and password displayed on the printer's control panel. On the computer's network connection screen, select the SSID shown on the printer's control panel to connect.



7. Enter the password displayed on the printer's control panel.



8. After the connection is established, press the OK button on the printer's control panel.



To connect a smart device, use Epson iPrint to configure the printer.

To connect a computer, make connection settings for adding a computer.

Making Wi-Fi Network Settings from the Printer's Control Panel







Related Information

- ➔ [“Preparing an Application and Wi-Fi Connection from a Smart Device” on page 11](#)
- ➔ [“Adding Computers” on page 38](#)

Checking the Printer's Network Connection Status

Network Icon

You can check the network connection status using the network icon on the printer's home screen. The icon changes depending on the connection type and strength of the radio wave.

Icon	Description
	Network is not set up.
	Wi-Fi is enabled. Simple AP mode is disabled.
	Wi-Fi is disabled. Simple AP mode is enabled.
	Wi-Fi and Simple AP mode are enabled.
	Indicates that the connection has changed from Wi-Fi to Wi-Fi Direct mode. Automatically reconnect using Wi-Fi when Wi-Fi Direct is disabled.
	Ad Hoc mode is enabled.

Checking the Network Status from the Printer's Control Panel

You can also view other network-related information by pressing the network menus you want to check.

1. Select **Setup** on the home screen.

2. Select **Network Settings > Network Status**.

Displays the network connection status and Wi-Fi Direct connection status. You can check if the printer is connected to the network, or what mode you are using and how many devices are connected when the printer is connected by Wi-Fi Direct.

3. To check other information, press the ◀ or ▶ button and then select the menus that you want to check.

Wi-Fi Status

Displays the network information (Printer Name, Obtain IP Address, Default Gateway, DNS Server Setup Mode and so on) for Wi-Fi connections.

Wi-Fi Direct Status

Displays the network information (Printer Name, Connection, Obtain IP Address, the number of connected devices, Default Gateway and so on) for Wi-Fi Direct connections.

Epson Connect Status

Checking the Printer's Network Connection Status

Displays the registered information for Epson Connect services.

- ❑ Google Cloud Print Status

Displays the registered information for Google Cloud Print services and the connection status.

- ❑ Print Status Sheet

Make sure that A4 plain paper is set to the printer, then press the  button to print a network status sheet.

4. Press the OK button.

The printer's control panel returns to the menu screen.


Printing a Network Connection Report

1. Load paper.

2. Select **Setup** on the home screen, and then press the OK button.

3. Select **Network Settings** > **Connection Check**.

The connection check starts.

4. Press the  button to print the network connection report.

If an error has occurred, check the network connection report, and then follow the printed solutions.

Related Information

- ➔ [“Messages and Solutions on the Network Connection Report” on page 69](#)

Printing a Network Status Sheet


The network status sheet is printed on A4-size plain paper.

1. Load paper.

2. Select **Setup** on the home screen.

3. Select **Network Settings** > **Network Status**.

4. Press the  or  button, then select **Print Status Sheet** using the  or  button.

5. Make sure that paper is set and press the  button.

The network status sheet is printed.

Advanced Network Settings

Setting Up from the Printer's Control Panel

You can change the network printer name, TCP/IP setup, DNS server and so on. Check your network environment before making changes.

1. Select **Setup** on the home screen.
2. Select **Network Settings > Manual Network Setup**.
3. Enter the printer name.

You can enter the following characters. To fix the printer name, move the cursor on the **Done**, and then press the OK button.

- Character limits: 2 to 15 (you must enter at least 2 characters)
- Usable characters: A to Z, a to z, 0 to 9, -.
- Characters you cannot use at the top: 0 to 9.
- Characters you cannot use at the bottom: -



Note:

If you press the OK button without entering the printer name, the default printer name (EPSON and the last six digits of the printer's MAC address) are set.

4. Select the method for acquiring the IP address (TCP/IP Setup).
 - Auto

Select when you are using an access point at home or you are allowing the IP address to be acquired automatically by DHCP.
 - Manual

Select when you do not want the printer's IP address to be changed. Enter the IP address, subnet mask, default gateway, primary DNS server, and secondary DNS server according to your network environment. Press the OK button, and go to step 6.

Advanced Network Settings

5. Select the method for setting the DNS server.

Auto

Select when you want to acquire the IP address automatically.

Manual

Select when you want to set a unique DNS server address to the printer. Enter the addresses for the primary DNS server and the secondary DNS server.

6. Select whether or not to use a proxy server.

Use

Select when you are using a proxy server in your network environment and you want to set it to the printer. Enter the proxy server address and port number.

Do Not Use

Select when you are using the printer in a home network environment.

7. Check the settings and press the OK button.

A message is displayed on the LCD screen when the network settings are complete, and you are returned to the home screen after a short period of time.

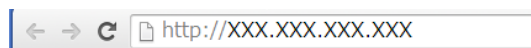
Setting Up from Web Config

To use Web Config, printers and devices must have an IP address and be connected to the same network.

1. Check the printer's IP address.

You can check this from the Network Status screen on the printer's control panel, a connection report, or the [IP Address] column of a network status sheet.

2. Enter the printer's IP address into a browser to run Web Config.



3. Select **Network Settings**.

Note:

*If the menu is not displayed, change the page to **Advanced Settings** from the top of the screen.*

4. You can change the network basic settings and Wi-Fi settings.

Related Information

- ➔ [“Printing a Network Connection Report” on page 56](#)
- ➔ [“Printing a Network Status Sheet” on page 56](#)

Disconnecting or Initializing the Network

Disabling Wi-Fi from the Printer's Control Panel

When Wi-Fi is disabled, the Wi-Fi connection is disconnected.

1. Select the **Wi-Fi Setup** on the home screen.
2. Select **Disable Wi-Fi**.
3. Check the message, and then select **Yes**.

Disconnecting Wi-Fi Direct from the Printer's Control Panel

Note:

- When Simple AP mode is disabled, all devices connected to the printer in Simple AP mode are disconnected. If you want to disconnect a specific device, disconnect from the device instead of the printer.*
- If you disconnect Wi-Fi Direct mode from the printer or from a device, the network is returned to its original setup.*

1. Select **Wi-Fi Setup** on the home screen.
2. Select **Wi-Fi Direct > Disconnect**.
3. Check the message, and then select **Yes**.

Initializing the Network Settings from the Printer's Control Panel

You can restore all network settings to their defaults.

1. Select **Setup** on the home screen.
2. Select **Restore Default Settings > Network Settings**.
3. Check the message, and then select **Yes**.

Disabling Wi-Fi from Web Config

To use Web Config, printers and devices must have an IP address and be connected to the same network.

Disconnecting or Initializing the Network

1. Check the printer's IP address.

You can check this from the Network Status screen on the printer's control panel, a connection report, or the [IP Address] column of a network status sheet.

2. Enter the printer's IP address into a browser to run Web Config.



3. Select **Network Settings** > **Wi-Fi**, and then select **Disable Wi-Fi**.

Note:

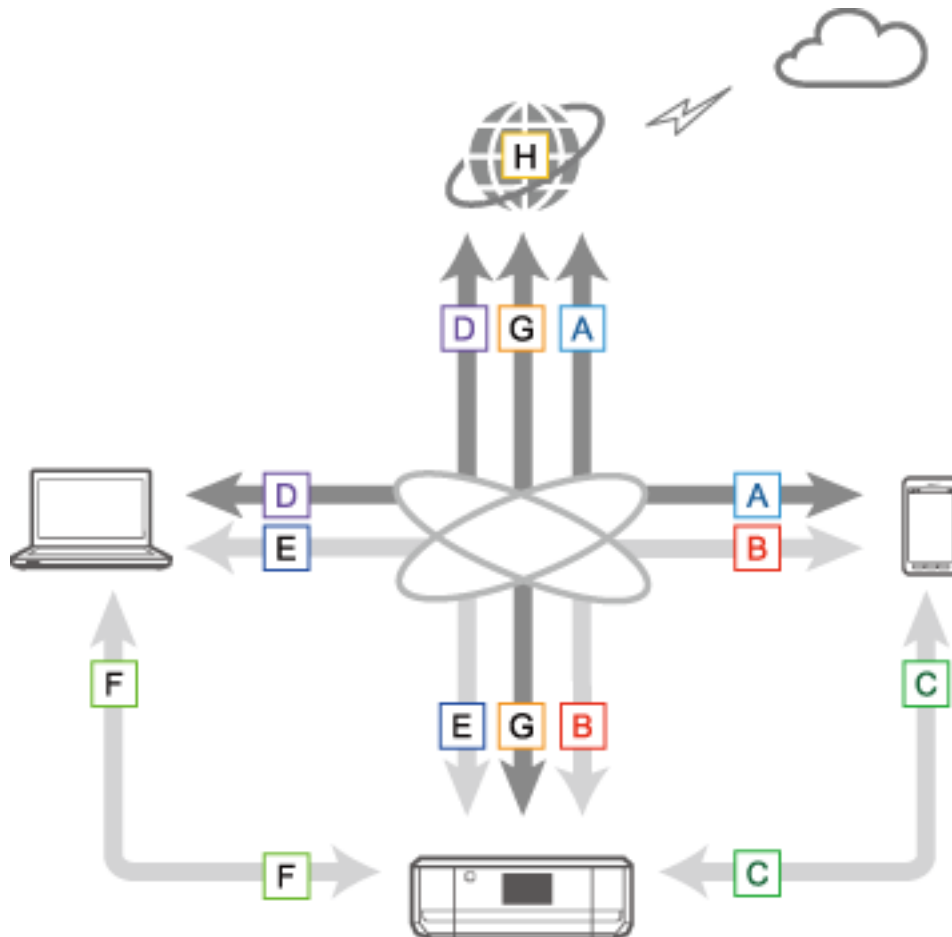
*If the menu is not displayed, change the page to **Advanced Settings** from the top of the screen.*

4. Check the message, and then select **OK**.

Solving Problems

Cannot Connect by Wi-Fi

Examine your current situation and then check the solutions.



Related Information

- ➔ “A: Cannot Connect to the Internet from a Smart Device” on page 61
- ➔ “B: Cannot Print with Wi-Fi from a Smart Device” on page 62
- ➔ “C: Cannot Print with Direct Connect from a Smart Device” on page 62
- ➔ “D: Cannot Connect to the Internet from a Computer” on page 63
- ➔ “E: Cannot Print or Scan by Wi-Fi from a Computer” on page 67
- ➔ “F: Cannot Print with Direct Connect from a Computer” on page 68
- ➔ “G: Cannot Register the Printer to Cloud Services or Cannot Update the Firmware” on page 68
- ➔ “H: The Internet Disconnects when no Changes were made to the Network Environment” on page 68

A: Cannot Connect to the Internet from a Smart Device

- Restart the access point (consider other users who may be using the network).

Solving Problems

- You cannot access the Internet by Wi-Fi when the printer and smart device are connected in Wi-Fi Direct mode. Disconnect the printer if you want to access the Internet.
- Check the status of the access point to make sure it is working correctly. See the documentation provided with the access point for details.
- If the smart device cannot receive signals sufficiently from the access point, move them closer together. If interference occurs, move them away from other electromagnetic wave equipment or radio equipment.
- You can check the strength of the radio wave from the [Wireless] column on the network status sheet. If the [Signal Strength] is [Fair], the strength of the radio wave may be weak.
- If there is an IP address conflict, the network connection may become unstable or unavailable. Assign a unique IP address to each network device.
- You can check the printer's IP address from the [IP address] column of a network status sheet.
- You may not be able to connect to a network that is receiving connections from too many devices. Reduce the number of devices on the network by turning off the unused devices and so on.
- If the access point is set to hide the SSID, enter the SSID and password directly.

Related Information

- ➔ [“Advanced Network Settings” on page 57](#)
- ➔ [“Setting Up Manually” on page 44](#)

B: Cannot Print with Wi-Fi from a Smart Device

- Check that the access point's access light is flashing.
- If a privacy separator on the access point is enabled, you cannot make network settings for the printer. Disable the privacy separator, and then try again. See the documentation provided with the access point for details.
- If the access point is set to hide the SSID, enter the SSID and password directly.
- Check if the password is correct. The password is case sensitive.
- Make sure that the printer is correctly connected to the network.

Related Information

- ➔ [“Setting Up Manually” on page 44](#)
- ➔ [“Simple AP Mode” on page 51](#)
- ➔ [“Checking the Network Status from the Printer's Control Panel” on page 55](#)

C: Cannot Print with Direct Connect from a Smart Device

- Check if the password has changed. If you are asked to enter a password, the password for Simple AP mode might have been changed. Enter a new password to re-establish the connection. You can check the password for Simple AP mode on the printer's control panel.
- Check if the printer is turned off. If you have set the power off timer on the printer, the printer turns off automatically after a certain period of time.
- Check if the network settings on the printer have been changed. If you disable Wi-Fi or Wi-Fi Direct settings, communication is disconnected.
- Check if the network environment has been changed. If you change the access point, make network setting again and connect the smart device and printer to the same network.

Solving Problems

- ❑ If you cannot connect to the printer from a smart device using Wi-Fi Direct mode even if the Wi-Fi connection status is [Invited], the device may have been registered as a rejected device on the printer. Reset the registered information from **Delete Registered Device** in **Wi-Fi Setup**. This function deletes all registered device information.

Related Information

- ➔ [“Simple AP Mode” on page 51](#)

D: Cannot Connect to the Internet from a Computer

- ❑ Restart the access point (consider other users who may be using the network).
- ❑ Check the status of the access point to make sure it is working correctly. See the documentation provided with the access point for details.
- ❑ If the computer cannot receive signals from the access point, move them closer together. If interference occurs, move them away from other electromagnetic wave equipment or radio equipment.
- ❑ You may not be able to connect to a network that is receiving connections from too many devices. Reduce the number of devices on the network by turning off the unused devices and so on.
- ❑ If there is an IP address conflict, the network connection may become unstable or unavailable. Assign a unique IP address to each network device.
- ❑ You cannot connect to the network if multiple network adapters are enabled. Disable unused network adapters.
- ❑ If wireless channels between the computer and the access point do not match, they cannot connect to each other.
- ❑ Available wireless channels may be restricted on computers that have a Wi-Fi adapter. Check that the computer has the wireless channel that is set on the access point.
- ❑ If the access point is set to hide the SSID, enter the SSID and password directly.
- ❑ For Windows, you may not be able to connect to the network when a network bridge is created. Delete the network bridge.
- ❑ If you have connected a Windows computer to the Internet using a USB type mobile data communication device, the Internet connection may be disabled when you connect to the printer in Simple AP mode. Set the network priorities to increase the priority setting for mobile data communication.

Related Information

- ➔ [“Advanced Network Settings” on page 57](#)
- ➔ [“Setting Up Manually” on page 44](#)
- ➔ [“Setting the Network Priority - Windows” on page 63](#)

Setting the Network Priority - Windows

When connecting a computer to the printer by Wi-Fi Direct (Simple AP mode) while using the Internet over low-speed mobile data communication, you may not be able to access the Internet because the printer has a priority connection. Follow the steps below to lower the priority for Simple AP mode and increase the priority for mobile data communication.

1. Display the Windows network connection screen.
 - ❑ Windows 8.1/Windows 8

Solving Problems

Desktop > Settings > Control Panel > Network and Internet > View network status and tasks > Change adapter settings.

Windows 7

Click the start button, and then select **Control Panel > View network status and tasks > Change adapter settings.**

Windows Vista

Click the start button, and then select **Control Panel > View network status and tasks > Manage network connections.**

Windows XP

Click the start button, and then select **Control Panel > Network and Internet Connections > Network Connections.**

2. Select **Wireless Network Connection (DIRECT-XXXXXXX)**, right-click to display the menu, and then select **Properties.**

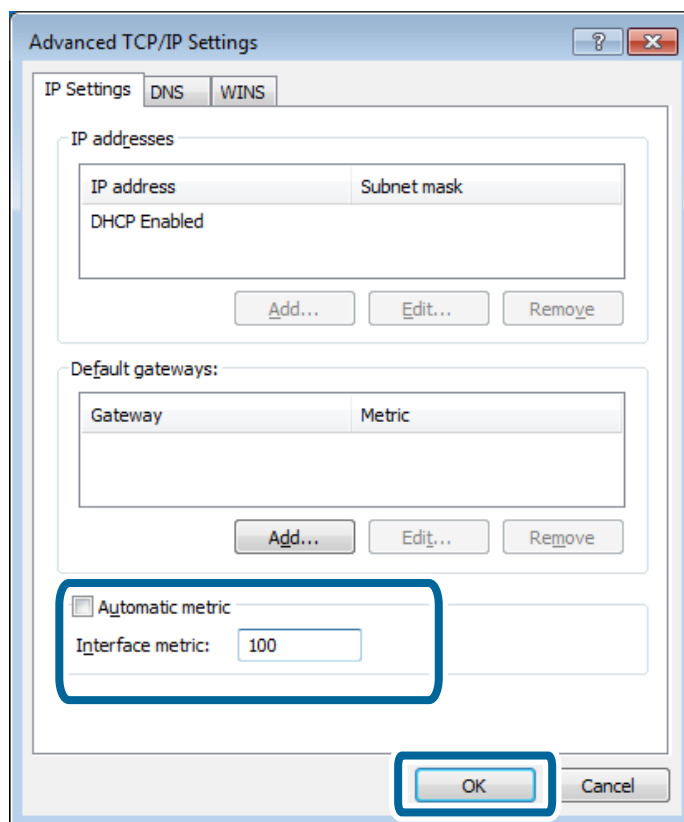
3. Select **Internet Protocol Version 4 (TCP/IPv4)** or **Internet**, and then click **Properties.**

Note:

*If you are using Windows Vista or later with IPv6, select **Internet Protocol Version 6 (TCP/IPv6).***

4. Click **Advanced.**



5. Clear **Automatic metric**, and then enter "100" in **Interface metric.**



6. Click **OK** to close the window.

Solving Problems

Setting the Network Priority - Mac OS X

1. Select  > **System preferences** > **Network**.
2. Click , and then select **Set Service Order**.
3. Drag the service for which you want to increase the priority to the top of the list.
4. Click **OK**.
5. Click **Apply** to close the screen.

Checking the Status Using the Network Icon - Windows

Check if the computer's network is enabled. Display the network connection screen on the computer you want to connect to the network, and then check the network connection icon.

- Windows 8.1/Windows 8

Desktop > Settings > Control Panel > Network and Internet > View network status and tasks > Change adapter settings.

- Windows 7

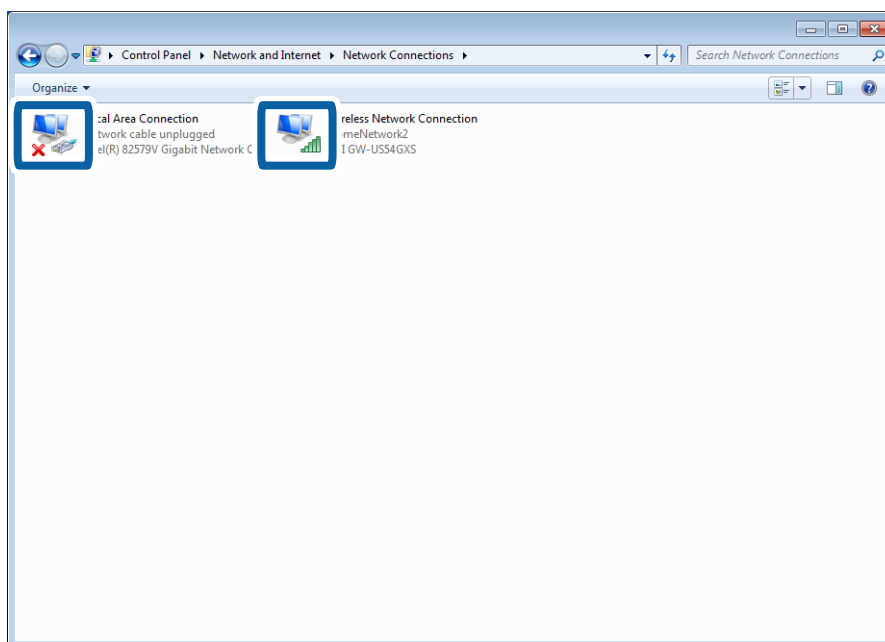
Click the start button, and then select **Control Panel > View network status and tasks > Change adapter settings.**

- Windows Vista





Click the start button, and then select **Control Panel > View network status and tasks > Manage network connections.**

- Windows XP

Click the start button, and then select **Control Panel > Network and Internet Connections > Network Connections.**




Solving Problems

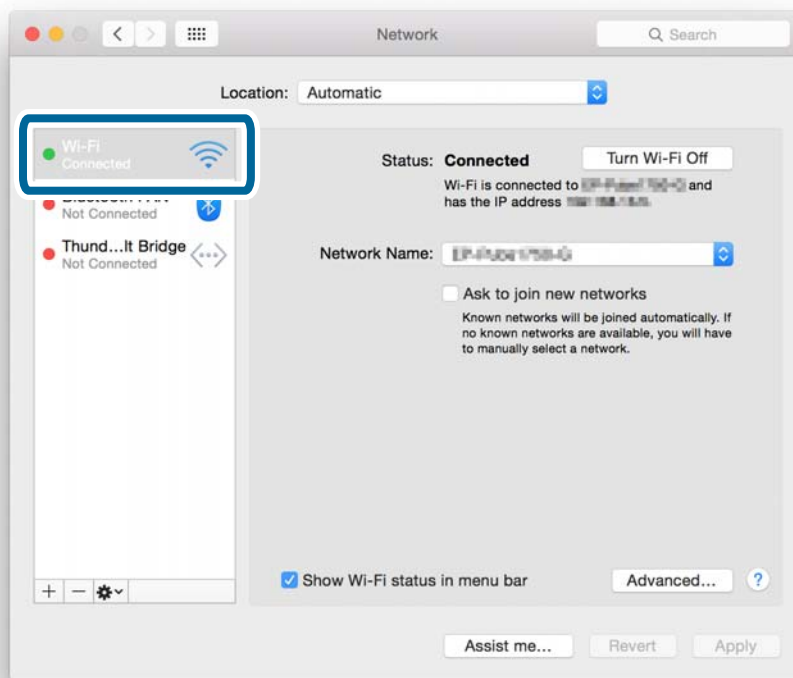
For Windows Vista or later	Windows XP	Descriptions
		The computer is connected to the network device by Wi-Fi.
		The computer's Wi-Fi adapter is recognized, but it is not working correctly.
No Icons	No Icons	The network adapter cannot be recognized. Connect the computer and the printer directly using a USB cable, or make connection settings after preparing the required devices for network connection.

Related Information

➔ [“Checking the Connection Using a Ping Command - Windows” on page 73](#)

Checking the Status Using the Network Light - Mac OS X

Check if the computer's network is enabled. Select  > **System preferences** > **Network** on the computer that you want to connect to the network, and then check the connection status on the network screen.



Service name	Light color	Descriptions
Wi-Fi (or AirPort)	Green	The computer is connected to a network device by Wi-Fi.
	Red or orange	The computer's Wi-Fi adapter is recognized, but it is not working correctly.

Solving Problems

Service name	Light color	Descriptions
Nothing	–	The network adapter cannot be recognized. Connect the computer and the printer directly using a USB cable, or make connection settings after preparing the required devices for network connection.

Related Information

- ➔ [“Checking the Connection Using a Ping Command - Mac OS X” on page 74](#)

E: Cannot Print or Scan by Wi-Fi from a Computer**Cannot Print**

- Check if the printer is turned off. If you have set the power off timer on the printer, the printer turns off automatically after a certain period of time.
- Check that the access point's access light is flashing.
- Use a Ping command to make sure the printer and computer are connected.
- If the printer port is wrong, you cannot print or printing might stop. Check that print port is set up and selected correctly.
- Check if the network environment has been changed. If you change the access point, make network setting again and connect the computer and printer to the same network.
- You can check the network that the printer is connected from [SSID] column of a network status sheet.

Related Information

- ➔ [“Checking the Connection Using a Ping Command - Windows” on page 73](#)
- ➔ [“Checking the Connection Using a Ping Command - Mac OS X” on page 74](#)
- ➔ [“Checking the Print Port” on page 89](#)
- ➔ [“Setting the Network Priority - Mac OS X” on page 65](#)

Cannot Scan

- EPSON Scan may not be able to communicate with a computer that has multiple interfaces. If you want to use the scanner, disable all other interfaces except for the scanner.
- If you cannot find the printer in EPSON Scan, make network scanner settings in EPSON Scan Settings. If the printer is not displayed in the list after searching on the network, enter the printer address in EPSON Scan Settings to connect with the printer.
- If a connection error occurs or scanning stops in the middle, set up a time-out in EPSON Scan Settings. See the EPSON Scan Settings help for details.

Related Information

- ➔ [“Connecting a Scanner to the Network” on page 90](#)

Solving Problems

F: Cannot Print with Direct Connect from a Computer

- ❑ Check if the Simple AP mode password has been changed. If the password has been changed, the connection is disconnected. Check if the password has been changed by other users. You can check the password for Simple AP mode on the printer's control panel.
- ❑ Check if the network settings on the printer have been changed. If you disable Wi-Fi or Wi-Fi Direct settings, or change the connection mode to Ad Hoc mode, communication is disconnected.

Related Information

- ➔ [“Simple AP Mode” on page 51](#)
- ➔ [“Combinations that can be Connected at the Same Time” on page 83](#)

G: Cannot Register the Printer to Cloud Services or Cannot Update the Firmware

If you failed to connect to the network or if you are having problems with the printer, check the network connection report.

Related Information

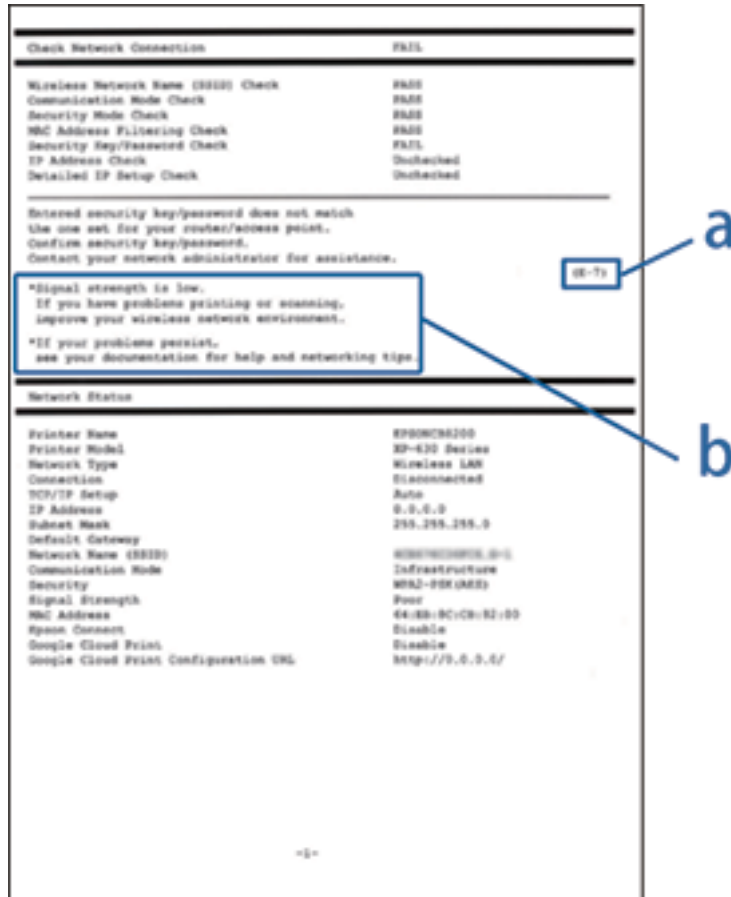
- ➔ [“Printing a Network Connection Report” on page 56](#)
- ➔ [“Cannot Connect After Trying all Solutions” on page 76](#)

H: The Internet Disconnects when no Changes were made to the Network Environment

If you are suddenly unable to connect to the Internet when no network changes have been made, there may be a problem with the server or a temporary problem. If you are still unable to connect after waiting for a while, contact your Internet provider.

Messages and Solutions on the Network Connection Report

Check the messages and error codes on the network connection report, and then follow the solutions.



- a. Error code
- b. Messages on the Network Environment

a. Error code

Code	Message	Solution
E-1	Confirm that the network cable is connected and network devices such as hub, router, or access point are turned on.	<ul style="list-style-type: none"> <input type="checkbox"/> Make sure that the Ethernet cable is connected to the printer, a hub, or other network devices. <input type="checkbox"/> Make sure that the hub or other network devices are turned on.

Solving Problems

Code	Message	Solution
E-2	<p>No wireless network names (SSID) found. Confirm that the router/access point is turned on and the wireless network (SSID) is set up correctly. Contact your network administrator for assistance.</p>	<ul style="list-style-type: none"> <input type="checkbox"/> Make sure that the access point is turned on. <input type="checkbox"/> Check that the computer or other devices are connected correctly to the access point. <input type="checkbox"/> Place the printer close to the access point. Remove any obstacles between them. <input type="checkbox"/> If you have entered the SSID manually, check if it is correct. Check the SSID from the network status screen on the printer's control panel or the network status sheet. <input type="checkbox"/> To establish a network using Push Button Setup (WPS), check that the access point supports WPS. If it does not support WPS, you cannot establish a network using Push Button Setup (WPS). <input type="checkbox"/> If you want to connect the printer and a computer in Ad Hoc mode, set up your computer in Ad Hoc mode and start a connection, and then make the printer's network settings. <input type="checkbox"/> Check that only ASCII characters (alphanumeric characters and symbols) are used for the SSID. The printer cannot display an SSID which contains any characters other than ASCII characters.
E-3	<p>No wireless network names (SSID) found. Confirm that the wireless network name (SSID) of the PC you wish to connect is set up correctly. Contact your network administrator for assistance.</p>	<ul style="list-style-type: none"> <input type="checkbox"/> To establish a connection in Ad Hoc mode, make sure the computer is turned on. If it is turned off, turn it on and then make the printer's network settings. <input type="checkbox"/> Place the computer close to the printer.
E-4	<p>Wi-Fi communication mode (IEEE802.11b/g/n) does not match the current setting of the printer. Set the same communication mode to the printer, router/access point, and PC. Contact your network administrator for assistance.</p>	<p>Make sure the Wi-Fi standard set on the access point matches the printer's Wi-Fi standard. See the <i>User's Guide</i> for the printer's Wi-Fi standards. If the standard does not match, adjust the Wi-Fi standard on the access point. See the documentation provided with the access point for details.</p>
E-5	<p>Security mode (e.g. WEP, WPA) does not match the current setting of the printer. Confirm security mode. Contact your network administrator for assistance.</p>	<p>Make sure the access point's security type is set to one of the following. If it is not, change the security type on the access point, and then reset the printer's network settings.</p> <ul style="list-style-type: none"> <input type="checkbox"/> WEP-64 bit (40 bit) <input type="checkbox"/> WEP-128 bit (104 bit) <input type="checkbox"/> WPA PSK (TKIP/AES)* <input type="checkbox"/> WPA2 PSK (TKIP/AES)* <input type="checkbox"/> WPA (TKIP/AES) <input type="checkbox"/> WPA2 (TKIP/AES) <p>* : WPA PSK is also known as WPA Personal. WPA2 PSK is also known as WPA2 Personal.</p>

Solving Problems

Code	Message	Solution
E-6	MAC address of your printer may be filtered. Check whether your router/access point has restrictions such as MAC address filtering. See the documentation of the router/access point or contact your network administrator for assistance.	<ul style="list-style-type: none"> <input type="checkbox"/> Check if the MAC address is disabled. If it is enabled, register the printer's MAC address so that it is not filtered. See the documentation provided with the access point for details. You can check the printer's MAC address from the network status screen on the printer's control panel or by printing a network status sheet. <input type="checkbox"/> If the access point's shared authentication is enabled on the WEP security method, make sure the authentication key and index are correct.
E-7	Entered security key/password does not match the one set for your router/access point. Confirm security key/password. Contact your network administrator for assistance.	<ul style="list-style-type: none"> <input type="checkbox"/> The password set on the access point and the entered password do not match. The password is case sensitive. Enter the correct password. <input type="checkbox"/> If the Wi-Fi connection is suddenly disconnected, check the following. If any of these are applicable, reset the network settings using the software disc supplied or using the software downloaded from the website. http://epson.sn <ul style="list-style-type: none"> <input type="checkbox"/> Another Wi-Fi device was added to the network using Push Button Setup (WPS). <input type="checkbox"/> The Wi-Fi network was set up using any method other than Push Button Setup (WPS) from the software disc supplied.
E-8	Incorrect IP address is assigned to the printer. Confirm IP address setup of the network device (hub, router, or access point). Contact your network administrator for assistance.	<ul style="list-style-type: none"> <input type="checkbox"/> Enable DHCP on the access point when the printer's Obtain IP Address is set to Auto. <input type="checkbox"/> If the printer's Obtain IP Address is set to Manual, the IP address you manually set is out of range (for example: 0.0.0.0) and it is disabled. Set a valid IP address.
E-9	Confirm the connection and network setup of the PC or other device. Connection using the EpsonNet Setup is available. Contact your network administrator for assistance.	<p>Check the following.</p> <ul style="list-style-type: none"> <input type="checkbox"/> Devices are turned on. <input type="checkbox"/> You can access the Internet and other computers or network devices on the same network from the devices you want to connect to the printer. <p>If it still does not work after checking the above, reset the network settings using the software disc supplied or using the software downloaded from the website.</p> <p>http://epson.sn</p>
E-10	Confirm IP address, subnet mask, and default gateway setup. Connection using the EpsonNet Setup is available. Contact your network administrator for assistance.	<p>Check the following.</p> <ul style="list-style-type: none"> <input type="checkbox"/> Other devices on the network are turned on. <input type="checkbox"/> Network addresses (IP address, subnet mask, and default gateway) are correct if you have set the printer's Obtain IP Address to Manual. <p>Reset the network address if these are incorrect. You can check the IP address, subnet mask, and default gateway from the network status screen on the printer's control panel or by printing a network status sheet.</p> <p>When DHCP is enabled, change the printer's Obtain IP Address to Auto. If you want to set the IP address manually, check the access point's IP address, and then select Manual on the printer's control panel. Set the subnet mask to [255.255.255.0].</p>

Solving Problems

Code	Message	Solution
E-11	Setup is incomplete. Confirm default gateway setup. Connection using the EpsonNet Setup is available. Contact your network administrator for assistance.	<p>Check the following.</p> <ul style="list-style-type: none"> <input type="checkbox"/> The default gateway address is correct when you set the printer's TCP/IP Setup to Manual. <input type="checkbox"/> The device that is set as the default gateway is turned on. <p>Set the correct default gateway address. You can check the default gateway address from the network status screen on the printer's control panel or by printing a network status sheet.</p>
E-12	<p>Confirm the following:</p> <ul style="list-style-type: none"> <input type="checkbox"/> Entered security key/password is correct <input type="checkbox"/> Index of the security key/password is set to the first number <input type="checkbox"/> IP address, subnet mask, or default gateway setup is correct <p>Contact your network administrator for assistance.</p>	<p>Check the following.</p> <ul style="list-style-type: none"> <input type="checkbox"/> Other devices on the network are turned on. <input type="checkbox"/> The network addresses (IP address, subnet mask, and default gateway) are correct if you are entering them manually. <input type="checkbox"/> The network addresses for other devices (subnet mask and default gateway) are the same. <input type="checkbox"/> The IP address does not conflict with other devices. <p>If it still does not work after checking the above, try the following.</p> <ul style="list-style-type: none"> <input type="checkbox"/> Make network settings on the computer that is on the same network as the printer using the software disc supplied or using the software downloaded from the website. http://epson.sn <input type="checkbox"/> You can register several passwords on an access point that uses the WEP security type. If several passwords are registered, check if the first registered password is set on the printer.
E-13	<p>Confirm the following:</p> <ul style="list-style-type: none"> <input type="checkbox"/> Entered security key/password is correct <input type="checkbox"/> Index of the security key/password is set to the first number <input type="checkbox"/> Connection and network setup of the PC or other device is correct <p>Contact your network administrator for assistance.</p>	<p>Check the following.</p> <ul style="list-style-type: none"> <input type="checkbox"/> Network devices such as an access point, hub, and router are turned on. <input type="checkbox"/> The TCP/IP Setup for network devices has not been set up manually. (If the printer's TCP/IP Setup is set automatically while the TCP/IP Setup for other network devices is performed manually, the printer's network may differ from the network for other devices.) <p>If it still does not work after checking the above, try the following.</p> <ul style="list-style-type: none"> <input type="checkbox"/> Make network settings on the computer that is on the same network as the printer using the software disc supplied or using the software downloaded from the website. http://epson.sn <input type="checkbox"/> You can register several passwords on an access point that uses the WEP security type. If several passwords are registered, check if the first registered password is set on the printer.

b. Messages on the Network Environment

Message	Solution
*Multiple network names (SSID) that match your entered network name (SSID) have been detected. Confirm network name (SSID).	The same SSID may be set on several access points. Check the settings on the access points, and change the SSID.

Solving Problems

Message	Solution
*Signal strength is low. If you have problems printing or scanning, improve your wireless network environment.	The printing speed may be slow or printing may stop due to medium signal strength. Placing the printer close to the access point, or removing any obstacles between the access point and the printer may improve the environment.
*A router/access point channel conflict has been detected. If you have problems printing or scanning, improve your wireless network environment.	Signal interference can be caused by other wireless networks being used in nearby rooms or buildings. Placing the printer close to the access point, or changing the access point channel setting may improve the environment. See the documentation provided with the access point for details.
*Signal strength is low. A router/access point channel conflict has been detected. If you have problems printing or scanning, improve your wireless network environment.	The printing speed may be slow or printing may stop due to low signal strength. Signal interference can be caused by other wireless networks being used in nearby rooms or buildings. Placing the printer close to the access point, or changing the access point channel setting may improve the environment. See the documentation provided with the access point for details.
*No more devices can be connected. Disconnect one of the connected devices if you want to add another one.	You can simultaneously connect up to four Wi-Fi devices in Simple AP mode. To add another Wi-Fi device, disconnect one of the connected Wi-Fi devices first.

Checking the Connection Using a Ping Command

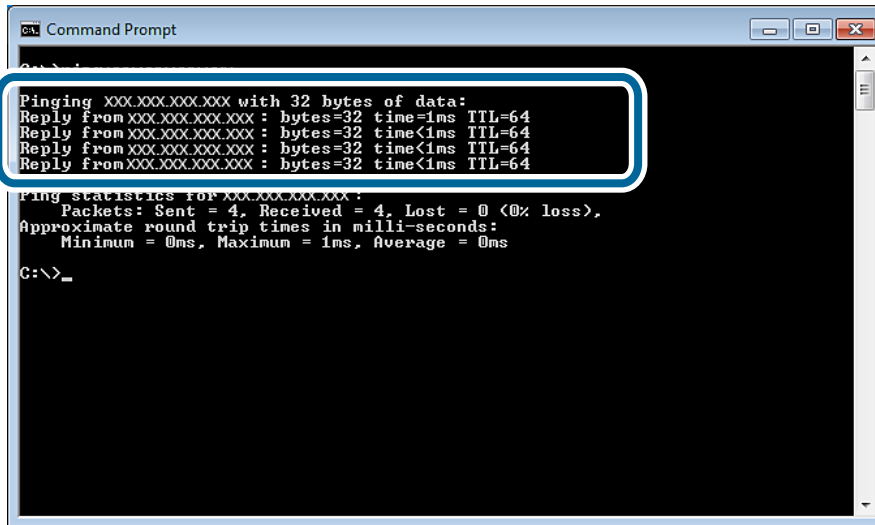
Checking the Connection Using a Ping Command - Windows

- Check the printer's IP address for the connection that you want to check.
You can check this from the Network Status screen on the printer's control panel, a connection report, or the [IP Address] column of a network status sheet.
- Display the computer's command prompt screen.
 - Windows 8.1/Windows 8
Display the application screen, and then select **Command Prompt**.
 - Windows 7 or earlier
Click the start button, select **All Programs** or **Programs > Accessories > Command Prompt**.
- Enter 'ping xxx.xxx.xxx.xxx', and then press the Enter key.
Enter the printer's IP address for xxx.xxx.xxx.xxx.

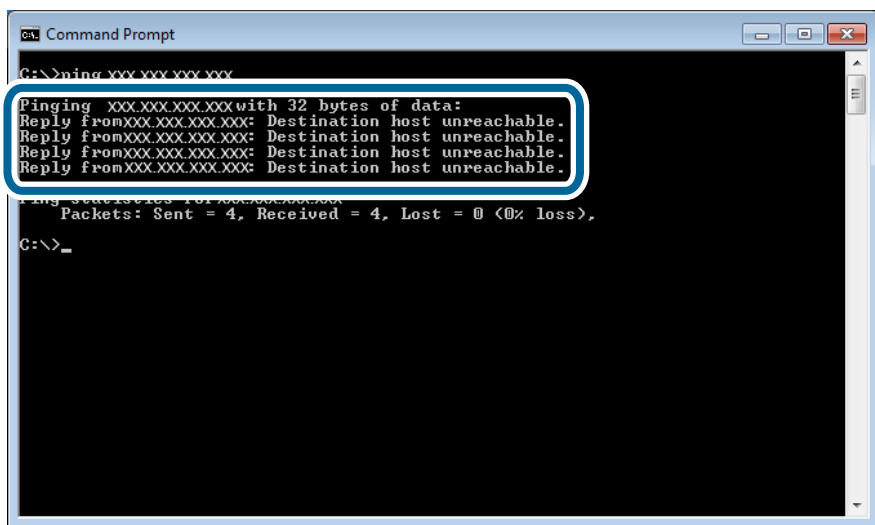
Solving Problems

4. Check the communication status.

If the printer and the computer are communicating, the following message is displayed.



If the printer and the computer are not communicating, the following message is displayed.

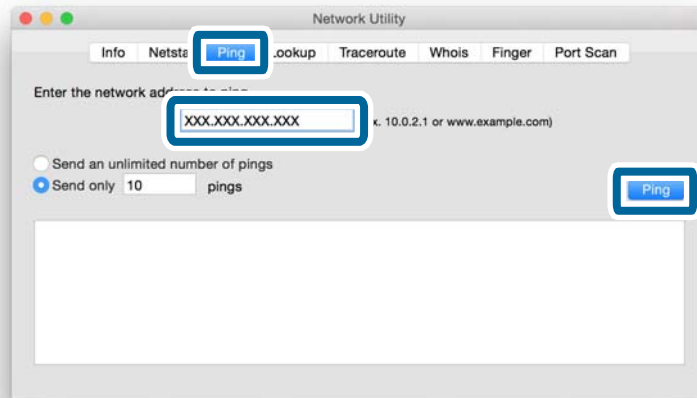


Checking the Connection Using a Ping Command - Mac OS X

1. Check the printer's IP address for the connection that you want to check.
 You can check this from the Network Status screen on the printer's control panel, a connection report, or the [IP Address] column of a network status sheet.
2. Run Network Utility.
 Enter "Network Utility" in **Spotlight**.

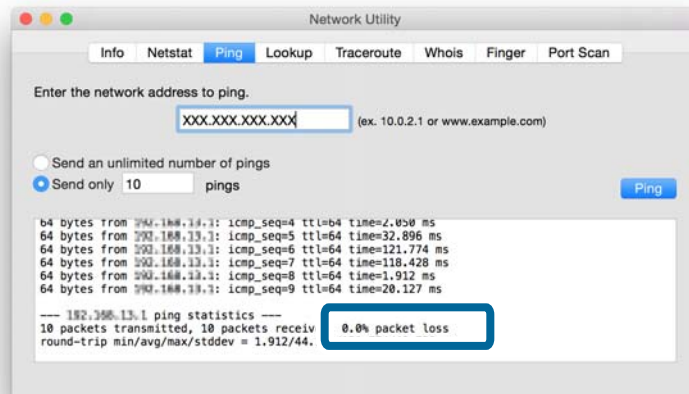
Solving Problems

3. Click the **Ping** tab, enter the IP address that you checked in step 1, and then click **Ping**.



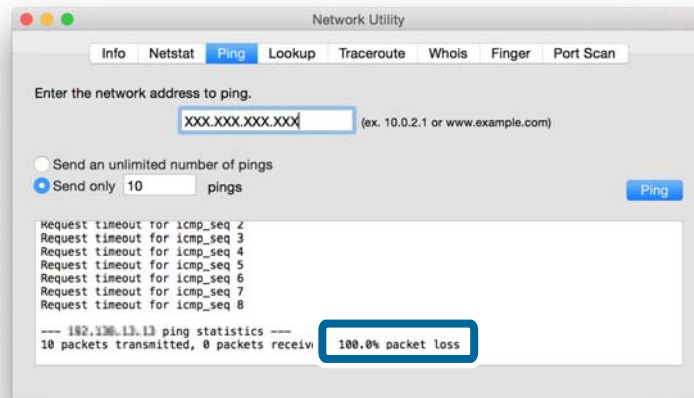
4. Check the communication status.

If the printer and the computer are communicating, the following message is displayed.



Solving Problems

If the printer and the computer are not communicating, the following message is displayed.



Cannot Connect After Trying all Solutions

- ❑ Initialize all of the printer's network settings, and then set up the network again.
- ❑ Restart network devices such as an access point or printer (consider other users who may be using the network).
- ❑ Check the latest firmware update release for the printer or access point. If the latest version has been released, update your device.

Note:

If you changed the network settings for the printer or the access point, the changes are applied after approximately 30 seconds to one minute.

Related Information

- ➔ [“Initializing the Network Settings from the Printer's Control Panel” on page 59](#)
- ➔ [“Connection Settings Between the Printer and a Smart Device” on page 10](#)
- ➔ [“Connection Settings Between the Printer and a Computer” on page 24](#)

Appendix

Basic Network Information Used by the Printer

Type of Network Used by the Printer

Your printer is able to use the following networks. See the documentation supplied with your printer to check which networks apply to your printer.

Networks with a Relay Point

Networks with a relay point such as a hub or access point that communicate with the printer through the relay point.

- Ethernet
- Wi-Fi

Networks Without a Relay Point

Networks without a relay point that allow the device to communicate directly with the printer.

- Wi-Fi Direct: Simple AP Mode
- Wi-Fi Direct: Wi-Fi Direct Mode
- Wi-Fi Ad Hoc Mode

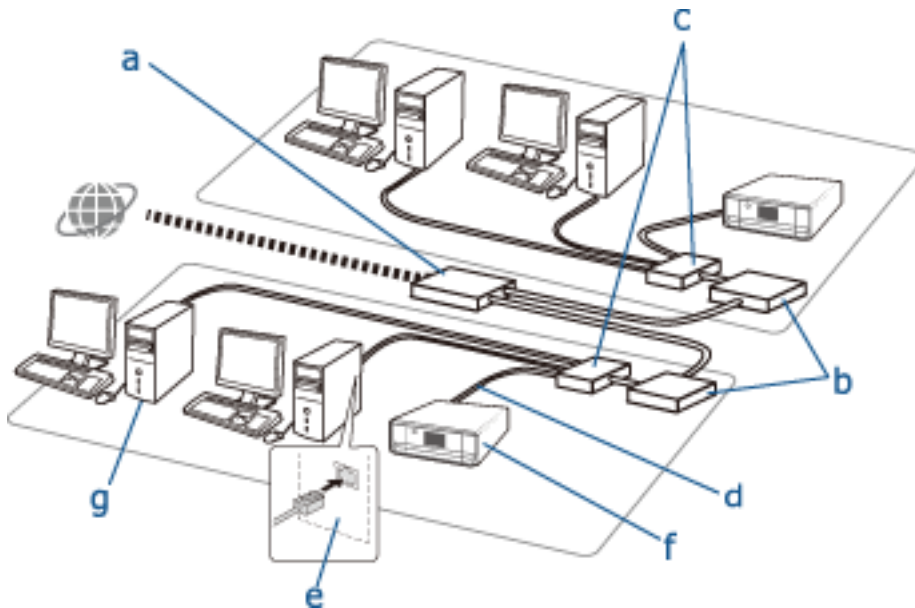
Summary of Networks with a Relay Point

Networks Using Cables (Ethernet)

Networks that are established by using a hub and cable are called Ethernet networks.

Appendix

Devices Used to Configure Ethernet Connections



The following is a list of the devices shown in the figure above.

- (a) Modem
- (b) Router
- (c) Hub
- (d) Ethernet Cable
- (e) Network Interface
- (f) Printer
- (g) Computer

The following explains the functions of the devices.

<p>(a) Modem or Optical Network Unit</p>	<p>Connects home or office networks to an external network (Internet) with a line through a computer or router. The computer or router cannot receive signals themselves without converting the information.</p> <p>There are two types of devices used to convert information depending on the signal.</p> <ul style="list-style-type: none"> <input type="checkbox"/> Modem: Converts an analog signal sent from an analog line such as a telephone line into a digital signal, or vice versa. <input type="checkbox"/> Optical Network Unit: Converts an optical signal into electrical signal, or vice versa and is installed on the user's side of the network.
<p>(b) Router</p>	<p>The router is the doorway to the network. They act as a relay point between devices and external signals. If the router is able to connect to the Internet, devices connected to the router are also able to connect to the Internet.</p> <p>Since the router is the doorway to the network, each router can be defined as an individual unit of the network. This individual unit is known as a "Segment".</p>
<p>(c) Hub</p>	<p>Routers cannot connect directly to a large number of devices. You can use a hub and Ethernet cable (d) to connect several devices such as printers and computers to the router. Some products are a combination of a hub and router.</p>

Appendix

(d) Ethernet Cable	<p>An Ethernet cable is used to connect a hub and devices like Network Interface devices.</p> <p>You can use UTP (Unshielded Twist Pair) and STP (Shielded Twist Pair) Ethernet cables for noise suppression as well as different types of Ethernet cables for different transfer rates. Select which Ethernet cable is most suitable for your environment.</p>
(e) Network Interface	<p>The Network Interface is a system that can control the network. This is implemented in the printer (f). It can be implemented in a computer or you can add this system by inserting a network interface card or using an adapter. The Ethernet cable should be inserted into the LAN port of the Network Interface enabled computer or device.</p> <p>A unique ID is given to every network interface. This is known as a MAC address. The Mac address consists of a 12 digit hexadecimal number. The first half of the ID number is given to a Network Interface sales company from an institution that manages MAC addresses, and the rest is used by the Network Interface sales company to create unique address and make sure there is no overlap.</p>

Glossary

IP address

When sending signals through a hub, an IP address is necessary to distinguish which device is which to deliver the signals. As an address is essential when sending letters by post, an IP address is essential for network communication to receive signals. IP is an abbreviation of Internet Protocol. The IP address is a combination of the network address to which a computer or device is connected to and the host address itself.

Assigning IP Address

IP addresses cannot overlap, so a unique IP address is assigned in the network to which the device belongs.

IP addresses are divided into two groups; Global IP addresses and Private IP addresses. To connect to the Internet, you need a global IP address. These are managed by global institutions and provided to Internet providers. The provider assigns the IP address to the contractor's devices.

When using a network in a local area such as a home or office, a private IP address that is only available in the closed network is assigned to each device. The device playing the role of a doorway to the network has a global IP address and it converts the private IP address and global IP address to give access to the Internet for devices that only have a private IP address.

Devices playing the role of a doorway to the network have a function called DHCP and this assigns the IP address to devices dynamically, or a provider or network administrator assigns a static IP address manually. If a device has an IP address which is dynamically assigned, it may be changed when connection fails or reconnects. If this is inconvenient, you can get a static IP address from a provider or network administrator.

Default Gateway

A device which converts data to alternately communicate with an external network such as the Internet is called a Gateway. A router acts as a gateway when connecting to the Internet from a home or office network using Ethernet or Wi-Fi. The router's IP address is known as the Default Gateway.

Subnet Mask

The subnet mask is a numerical value which distinguishes between the network address and the host address of the IP address. You can find the breakpoint of network address and host address by masking the IP address with the subnet mask.

Ethernet Communication Standard

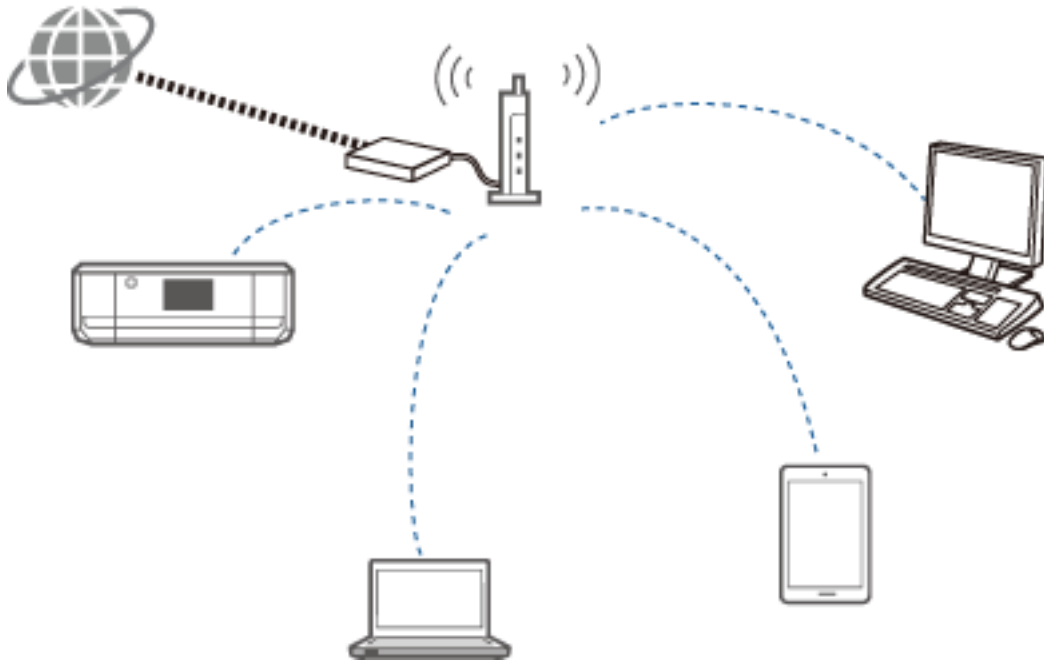
Ethernet has standards such as 1000BASE-T, 100BASE-TX, and 10BASE-T based on the transfer rate, transmission medium, transmission mode and so on. Each standard has a communication mode that must match the hub and device's communication mode to be used.

Networks Without Cables (Wi-Fi)

Wi-Fi uses radio waves instead of an Ethernet cable and communicates through access points.

Appendix

Devices Used to Configure Wi-Fi Connections



Wi-Fi uses radio waves to communicate with the network, whereas Ethernet uses cables. The following highlights the specific differences from Ethernet connections.

- It has access points.
It is equivalent to a hub on an Ethernet connection.
- It has an SSID.
Name of the network.
- It has a security feature to prevent unauthorized access.
It has a feature to prevent unauthorized access.

Glossary

Glossary of words related to Wi-Fi

- Access Point
An access point is a radio wave relay point that connects each device on the network. It also allows access to other networks such as Ethernet networks.
- SSID
Unlike an Ethernet network, Wi-Fi uses radio waves to connect to other devices. It is therefore possible to accidentally connect to unintended devices. To prevent devices from connecting to unknown networks, you need to specify which network to connect to. SSID (Service Set Identifier) is used to specify a network. If the SSID does not match, a connection will not be established. Normally, devices or computers search for the SSID set on the access point and establish a connection.
- Password
This is used to enter a security encrypted network. It is also known as a Pass phrase or Encrypted Key. You can select a variety of encryption schemes, such as WEP and WPA, to encrypt your security.

Appendix

Stealth SSID

An access point sends out SSID signals at regular intervals that can be searched from network devices. Stealth SSID does not send out any signals so that it cannot be found in the radio wave signal. If you want to connect to an access point that uses stealth SSID, you need to enter the SSID manually into your device.

MAC Address Filtering

MAC address filtering is a feature that only allows you to connect to devices for which the MAC address has been registered in advance. If the device is not registered in advance, a connection will not be established even if the password is correct.

Wi-Fi Standard

The following are the current Wi-Fi standards. They each have a different communication method, frequency band, and transmission rate. IEEE802.11b, IEEE802.11a, IEEE802.11g, IEEE802.11n, IEEE802.11ac, and so on. Each device must be using the same standard to connect by Wi-Fi.

2.4 or 5 GHz is used as the frequency band for Wi-Fi communication. The frequency band has a frequency width to enable data transmission and is known as a "channel". Each device has to use the same channel of the frequency band. The printer uses the 2.4 GHz frequency. Bluetooth, microwave, and medical equipment also use the 2.4 GHz frequency, and sometimes they may interfere with the radio waves if they are too close. In this situation it may help to change the channel being used.

Multi SSID

When you have several different Wi-Fi standards and securities, you can have SSIDs for each situation. This is known as Multi SSID. Each SSID is recognized as a different network. Even if devices are connected to the same access point, you cannot communicate with them if the SSID is different. The printer and your devices have to be on the same SSID network.

Networks Without a Relay Point (Wi-Fi Direct/Ad Hoc)

You can connect directly to devices that do not use any relay points, such as hubs and access points.



Wi-Fi Direct

Wi-Fi Direct allows you to connect two devices without using an access point. This is a radio communication standard certified by the Wi-Fi Alliance. By having one of the devices act as an access point in the application, you can connect directly to another device. Since this uses the same configuration as a Wi-Fi connection, you can use the same security method.

Simple AP Mode

In Simple AP mode, the printer acts as an access point. Enter the password into the printer's network (SSID) from a device to connect it to the same network. You can use the network continuously once it has been set up.

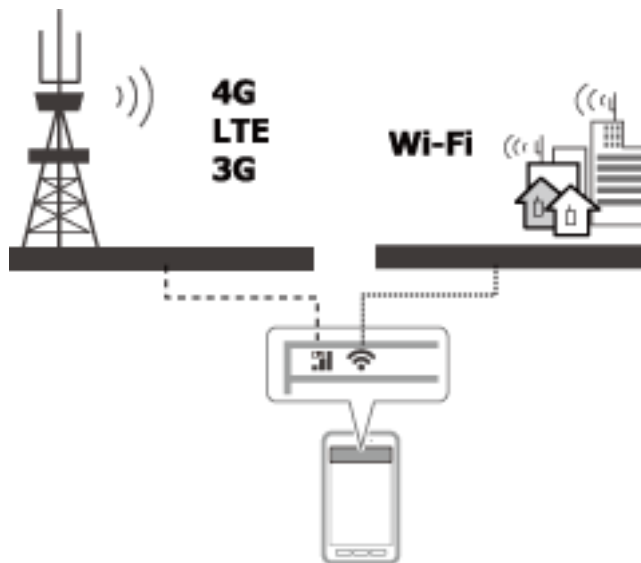
Wi-Fi Direct Mode

In Wi-Fi Direct mode, you can connect Wi-Fi Direct devices using a one-to-one connection. Either the printer or device acts as an access point. Even though you do not have to enter a password, you need to manually re-establish the connection each time it is disconnected.

Wi-Fi Ad Hoc Mode

In Wi-Fi Ad Hoc mode, you can connect devices through a radio wave directly without using an access point. Unlike Wi-Fi Direct, there are no access points even in the application.

Public Line Networks



You can use the following methods to connect to the Internet while you are in a public place. The printer cannot be connected to a public line.

Mobile Data Communication

Mobile devices come with features such as emailing and Internet that do not require a Wi-Fi connection. Instead, they connect to the Internet using the base station of a telecommunication carrier. This is known as mobile data communication.

It is also possible to use mobile data communication from other devices.

- You can use a mobile router or tethering to relay the Wi-Fi device to the mobile data communication line.
- Use a built-in wireless adapter or one connected to a computer.

Wi-Fi Spot, Public Wi-Fi Service

This is a service offered by the owners of many facilities such as shops, stations, or airports, as well as by telecom carriers, that provides a free wireless connection to the Internet from a mobile device or computer. (In some areas this service is not free.) You cannot use the printer with this service.

Network Functions and IPv4/IPv6 Tables

Client Operating Systems that Support the TCP/IP Protocol

Operating System	IPv4	IPv6
Windows Vista and later	✓	✓
Windows XP	✓	-
Mac OS X v10.6.8 to v10.10.x	✓	✓

Appendix

Network Functions and IPv4/IPv6 Tables

Function		Support	Remarks
Network Print	EpsonNet Print (Windows)	IPv4	-
	Standard TCP/IP (Windows)	IPv4/IPv6	IPv6 is for Windows Vista and later.
	WSD Print (Windows)	IPv4/IPv6	For Windows Vista and later.
	Bonjour Print (Mac OS X)	IPv4/IPv6	-
	IPP Print (Mac OS X)	IPv4/IPv6	For Mac OS X v10.7.x and later.
	Epson Connect (Email Print)	IPv4	-
	AirPrint	IPv4/IPv6	For iOS 5.0 and later, Mac OS X v10.7.x and later.
	Google Cloud Print	IPv4/IPv6	-
Network Scan	EPSON Scan (Windows/Mac OS X)	IPv4/IPv6	IPv6 is for Windows Vista and later.
	Push Scan (Windows/Mac OS X)	IPv4	Install EPSON Scan and Event Manager to enable one-push scanning from your scanner.
	WSD Scan	IPv4/IPv6	WSD Scan is for Windows Vista or later. WSD Push Scan is only for English operating systems.
	Epson Connect(Scan to Cloud)	IPv4	-
	AirPrint	IPv4/IPv6	For Mac OS X v10.9 and later.

Combinations that can be Connected at the Same Time

You can simultaneously connect with the approved combinations shown below. Set up each connection.

For example, if you want to use Wi-Fi and Simple AP mode at the same time:

- Set your printer to Wi-Fi from the computer, and then connect.
- Set your printer to Simple AP mode, and then connect from smart devices.

	Wi-Fi	Simple AP Mode	Wi-Fi Direct Mode	Ad Hoc Mode	USB
Wi-Fi	-	✓	-	-	✓
Simple AP Mode	✓	-	-	-	✓
Wi-Fi Direct Mode	-	-	-	-	✓
Ad Hoc Mode	-	-	-	-	✓

Appendix

	Wi-Fi	Simple AP Mode	Wi-Fi Direct Mode	Ad Hoc Mode	USB
USB	✓	✓	✓	✓	-

Ports and Protocols

EpsonNet Print (for Windows Only)

This is Epson's original printing port.

EpsonNet Print is set to the print port when you set up your printer using the software disc supplied or using the software downloaded from the website. EpsonNet Print is also set to the print port when you install the printer driver.

- You do not need to reset the printer's network settings even if the printer's IP address is changed by the DHCP function on a server or router.
- You can use printers in a different network segment over the router.
- The printer's status is displayed at the top of the Windows spooler screen.

Standard TCP/IP

This is a communication protocol pre-installed on a computer.

- You need to reset the printer's network settings when the printer's IP address is changed by the DHCP function on a server or router.
- You can use printers in a different network segment over the router.
- You can acquire a print log from **Event Viewer**.

Bonjour (for Mac OS X Only)

This is a protocol used in Mac OS X.

You do not need to reset the printer's network settings when the printer's IP address is changed by the DHCP function on a server or router.

To add printers from Bonjour, enter the product's model number on the following website. Go to Support and follow the on-screen instructions to add printers.

<http://epson.sn> > **Additional Software**

WSD (for Windows Only)

WSD (Web Services on Devices) is a communication protocol pre-installed on computers running Windows Vista or later.

- You do not need to reset the printer's network settings when the printer's IP address is changed by the DHCP function on a server or router.
- You can use printers in a different network segment over the router.

Appendix

Note:

The WSD port is automatically set up if your computer's operating system is later than Windows 8. If you set up the WSD port without installing the Epson printer driver, your computer's standard driver is set up instead. In that case, we recommend installing the Epson printer driver separately. Access the following website, then enter the product's model number.

<http://epson.sn>

After installing, change the printer driver from the printer's property screen under Devices and Printers.

When printing using WSD, select the printer on the network.

Related Information

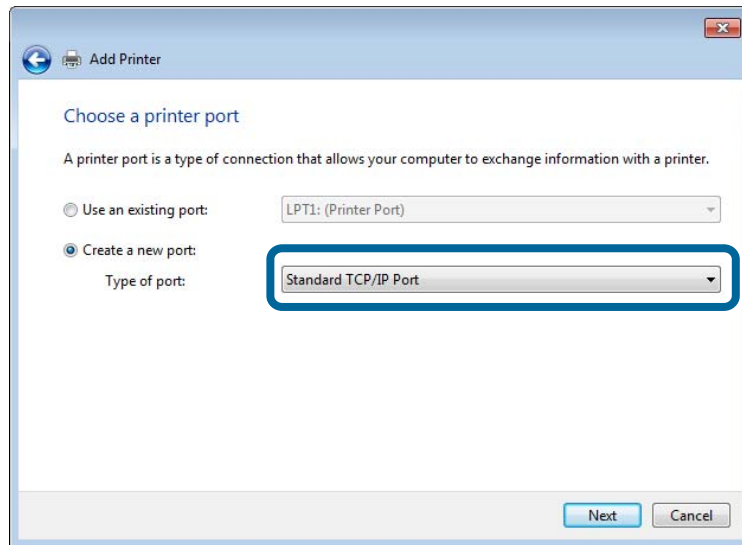
- ➔ [“Setting Up Standard TCP/IP Ports – Windows” on page 85](#)
- ➔ [“Setting Up a WSD Port – Windows” on page 87](#)

Setting Up Standard TCP/IP Ports – Windows

1. Open the devices and printers screen.
 - Windows 8.1/Windows 8
Desktop > Settings > Control Panel > Hardware and Sound or Hardware > Devices and Printers.
 - Windows 7
Click start > Control Panel > Hardware and Sound (or Hardware) > Devices and Printers.
 - Windows Vista
Click start > Control Panel > Hardware and Sound > Printers.
 - Windows XP
Click start > Control Panel > Printers and Other Hardware > Printers and Faxes.
2. Add a printer.
 - Windows 8.1/Windows 8
Click **Add printer**, and then select **The printer that I want isn't listed**.
 - Windows 7
Click **Add printer**.
 - Windows Vista
Click **Install Printer**.
 - Windows XP
Click **Install Printer**, and then click **Next**.
3. Add a local printer.
 - Windows 8.1/Windows 8
Select **Add a local printer or network printer with manual settings**, and then click **Next**.
 - Windows 7/Windows Vista
Click **Add a local printer**.
 - Windows XP
Select **Local printer attached to this computer**, and then click **Next**.

Appendix

4. Select **Create a new port**, select **Standard TCP/IP Port** as the Port Type, and then click **Next**.
For Windows XP, click **Next** on the **Add Standard TCP/IP Printer Port Wizard** screen.

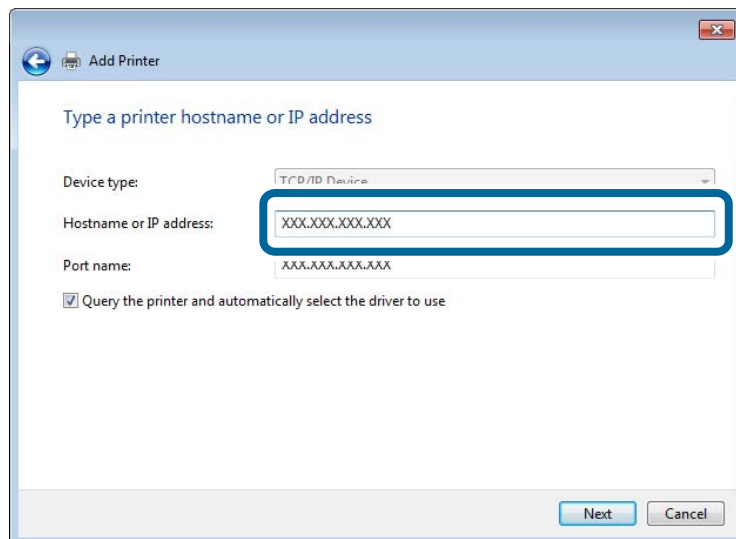


5. Enter the printer's IP address in **Host Name or IP Address** or **Printer Name or IP Address**, and then click **Next**.

Do not change **Port Name**.

Click **Continue** when the **User Account Control** screen is displayed.

For Windows XP, click **Done** on the **Standard TCP/IP Printer Port** screen.



6. Set the printer driver.

If the printer driver is already installed:
Select **Manufacturer** and **Printer**. Click **Next**.

If the printer driver is not installed:

Click **Have Disk** and then insert the software disc supplied with the printer. Click **Browse**, and then select the folder on the disc containing the printer driver. Make sure you select the correct folder. The location of the folder may change depending on your operating system.

Appendix

32 bit version of Windows: WINX86

64 bit version of Windows: WINX64

7. Follow the on-screen instructions.

For Windows XP, setup is complete. For Windows Vista and later, check the port configuration.

Checking the Port Configuration - Windows

After setting up the port, check the port configuration if you are using Windows Vista or later and using the TCP/IP port for printing.

1. Open the devices and printers screen.
 - Windows 8.1/Windows 8
Desktop > Settings > Control Panel > Hardware and Sound or Hardware > Devices and Printers.
 - Windows 7
 Click start > **Control Panel > Hardware and Sound (or Hardware) > Devices and Printers.**
 - Windows Vista
 Click start > **Control Panel > Hardware and Sound > Printers.**
2. Open the devices and printers screen.
 - Windows 8.1/Windows 8/Windows 7
 Right-click the printer icon, and then click **Printer properties.**
 - Windows Vista
 Right-click the printer icon, and then select **Run as administrator > Properties.**
3. Click the **Ports** tab, select **Standard TCP/IP Port**, and then click **Configure Port**.
4. Check the port configuration.
 - For RAW
 Check that **Raw** is selected in **Protocol**, and then click **OK**.
 - For LPR
 Check that **LPR** is selected in **Protocol**. Enter "PASSTHRU" in **Queue name** from **LPR Settings**. Select **LPR Byte Counting Enabled**, and then click **OK**.

Setting Up a WSD Port – Windows

This section explains how to set up a WSD port for Windows 7/Windows Vista.

Note:

For Windows 8, the WSD port is set up automatically.

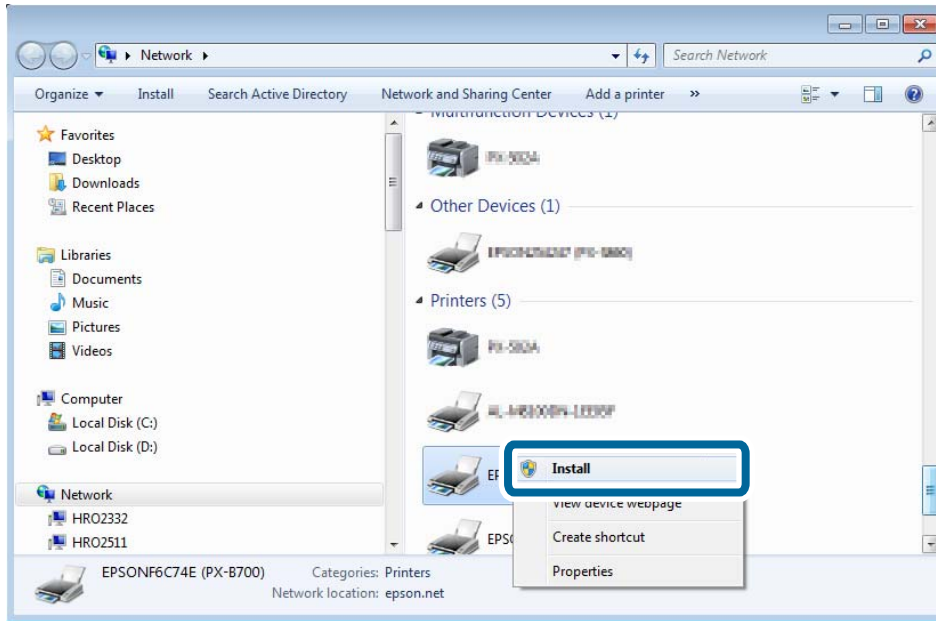
The following is necessary to set up a WSD port.

- The printer and computer are connected to the network.
- The printer driver is installed on the computer.

1. Turn the printer on.

Appendix

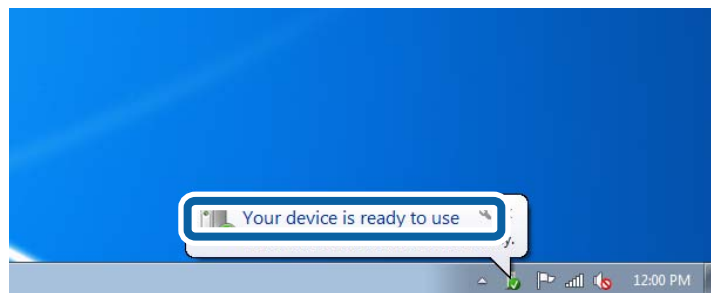
2. Click start, and then click **Network** on the computer.
3. Right-click the printer, and then click **Install**.
Click Continue when the **User Account Control** screen is displayed.
Click **Uninstall** and start again if the **Uninstall** screen is displayed.



Note:

The printer name you set on the network and model name (EPSONXXXXXX(XX-XXXX)) are displayed on the network screen. You can check the printer's name set on the network from the printer's control panel or by printing a network status sheet.

4. Click **Your device is ready to use**.



5. Check the message, and then click **Close**.



Appendix

6. Open the devices and printers screen.

- ❑ Windows 7

Click start > **Control Panel** > **Hardware and Sound** (or **Hardware**) > **Devices and Printers**.

- ❑ Windows Vista

Click start > **Control Panel** > **Hardware and Sound** > **Printers**.

7. Check that an icon with the printer's name on the network is displayed.

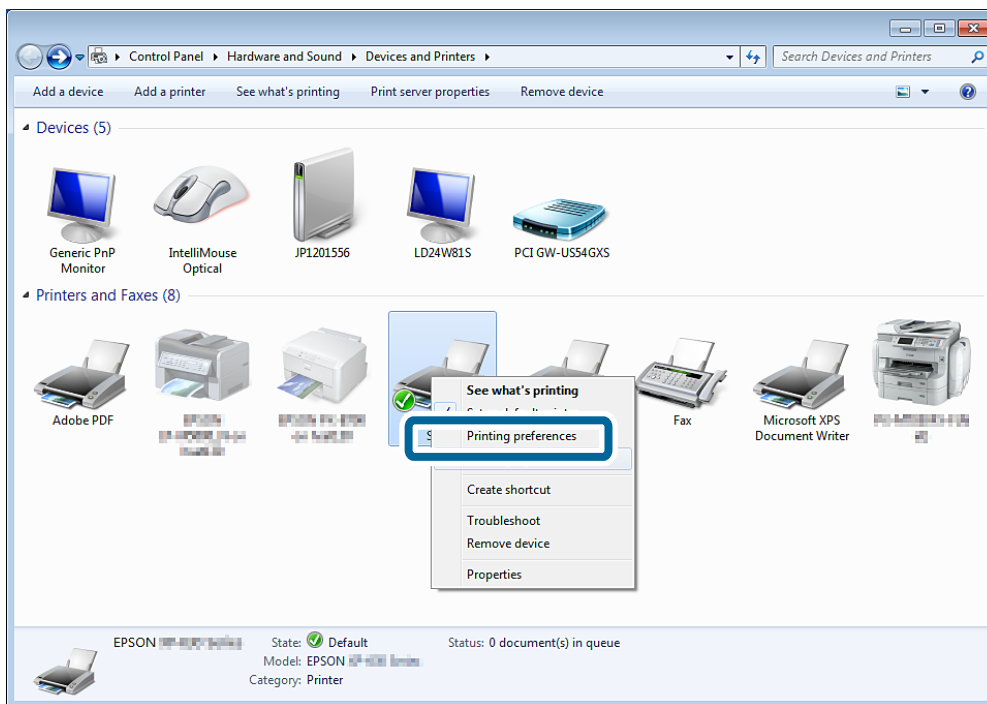
Select the printer name when printing with WSD.

Checking the Print Port

For Windows you can switch between multiple print ports to print. Check which print port is available. The following example is for Windows 7.

1. Click start, and then select **Devices and Printers**.

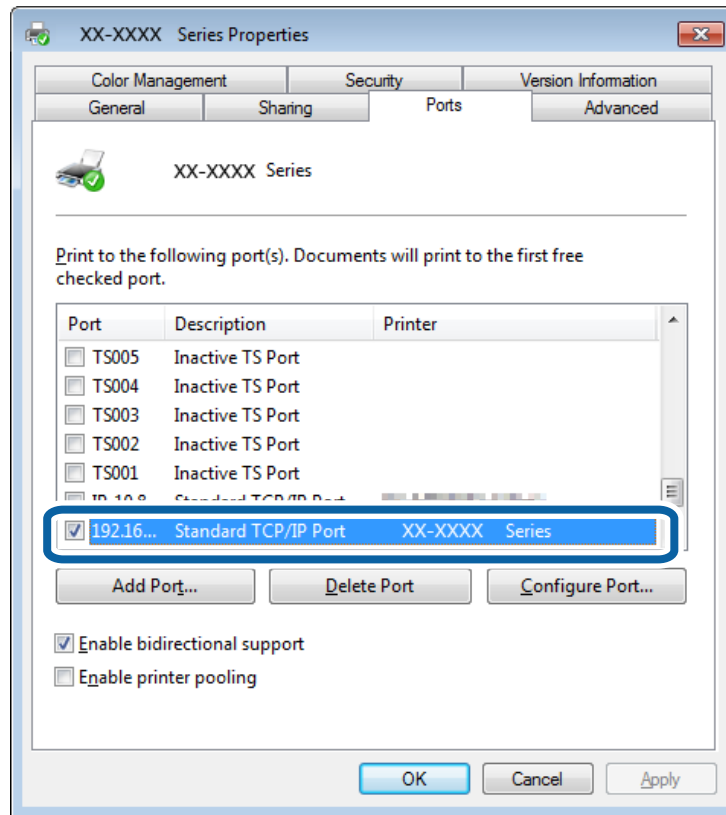
2. Right-click the printer icon, and then click **Printer Properties**.



Appendix

3. Select the **Ports** tab to check which print port is selected.

Print ports selected in the port column are available. You can check the port type from **Description**.



Connecting a Scanner to the Network

You need to install EPSON Scan on your computer to use scanners on a network.

1. Install EPSON Scan.

- Windows

This is included on software disc supplied.

\Driver\Scanner\Driver

Note:

If you do not have a software disc or disc drive, download the software from the following website.

<http://epson.sn> > **Additional Software**

- Mac OS X

Download the software from EPSON Software Updater or the following website, and then install.

<http://epson.sn> > **Additional Software**

2. Start EPSON Scan Settings.

- Windows

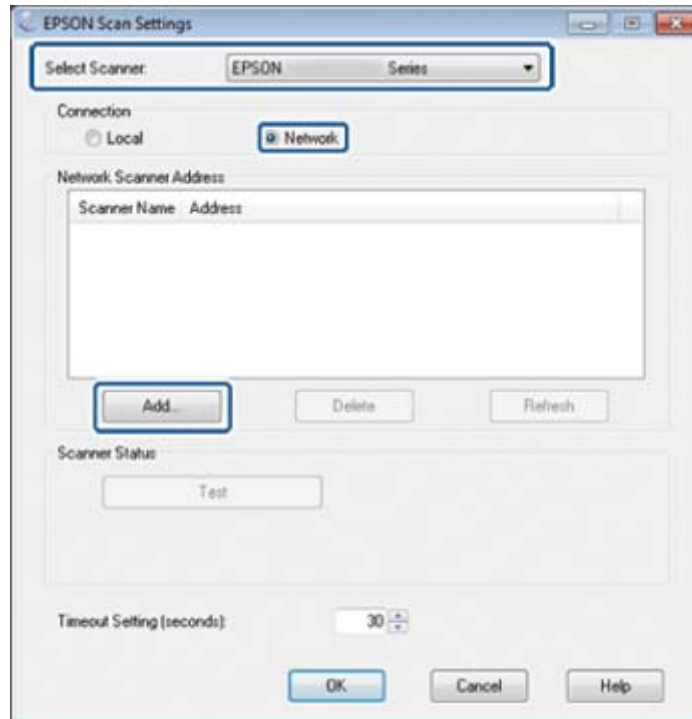
Click **All Programs > EPSON > EPSON Scan > EPSON Scan Settings**.

- Mac OS X

Appendix

Click **Go > Application > Epson Software > EPSON Scan Settings**.

3. Select the scanner you want to use from **Select Scanner**, and then click **Network** from **Connection**.



The **Add** screen is displayed and the computer searches for the scanner.

Note:

*If the **Add** screen is not displayed, click **Add** on the **EPSON Scan Settings** screen.*

4. Click the scanner's IP address, and then click **OK**.



Important:

You cannot search for a scanner in a different network segment over the router. Specify the address directly if it is not found.

5. Select an IP address, and then click **Test**.

When the completion message is displayed, you have successfully connected the scanner and computer.

6. Click **OK**.