

# Supplement for Windows 98 Users

Your EPSON Digital Camera software is fully compatible with your Microsoft® Windows® 98 operating system.

To see information on the camera connected to your computer, as well as driver and port information, install the EPSON Digital Camera driver on your Windows 98 system.

**Note:**

- ❑ *Before installing the EPSON Digital Camera driver on your computer, you need to uninstall EPSON Photo!2 and EPSON Photo File Uploader.*
- ❑ *Connect your digital camera to the computer using the serial cable according to your digital camera User's Guide.*

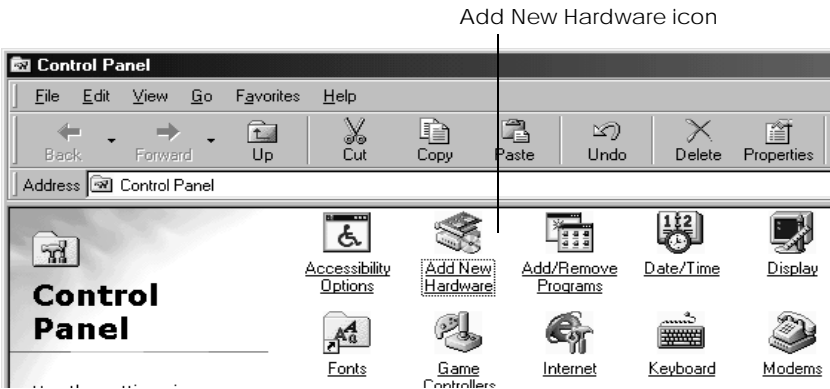
To install the EPSON Digital Camera driver, follow the steps in the next section. If you have already installed the driver and want to add another device to your system, see page 7.

---

## Installing the Driver

To install the EPSON Digital Camera driver, follow the steps below.

1. Turn on your computer, and start Windows 98.
2. Open the Control Panel window from the settings menu and click the Add New Hardware icon. Then follow the instructions on the screen.



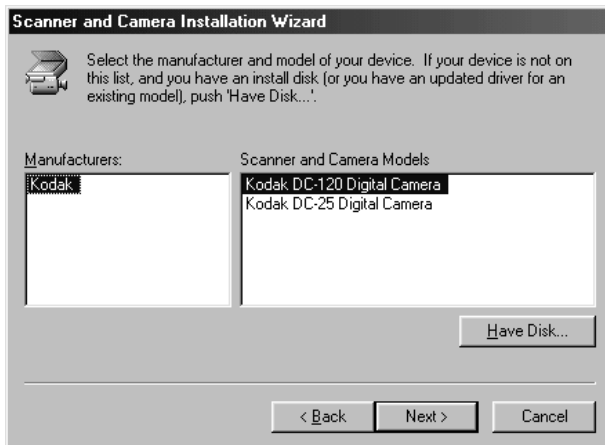
3. When the Add New Hardware Wizard appears, select No and click Next.



4. From the Hardware type list, select Imaging Device, then click Next.



5. When the Scanner and Camera Installation Wizard appears, click Next again. The screen below appears. Click Have Disk....

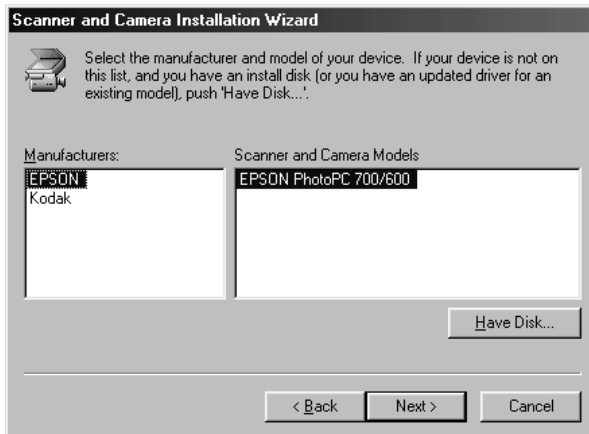


6. Insert the CD into the CD-ROM drive. Click Browse to select a directory for your respective language. You can also type in the CD-ROM drive letter, EPSON, the folder of your preferred language, and Win98 folder as the location as shown below in the Copy manufacturer's files from: box.



After your choice of directory is made, click OK.

7. Select EPSON as the manufacturer and your camera model, and click Next.



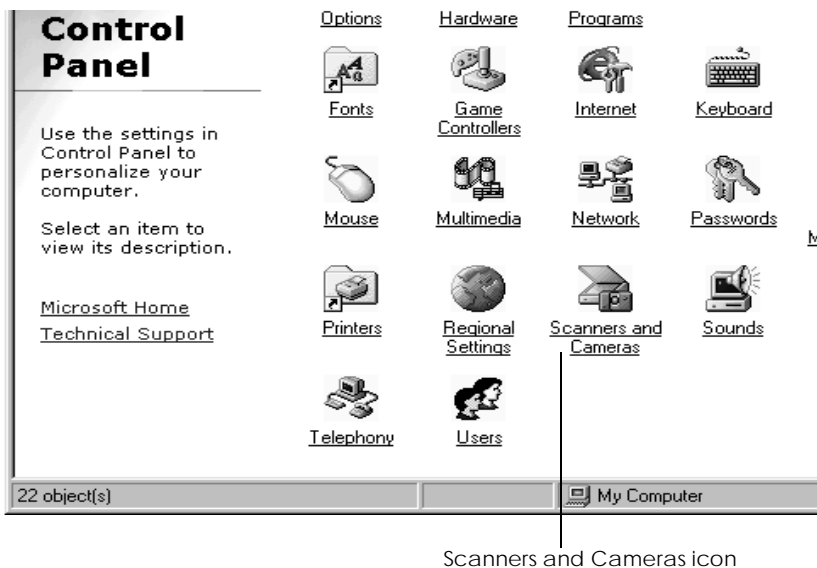
8. The screen below appears. Click Next without changing the selection, as the driver sets the port automatically.



9. The screen below appears. Click Finish to end installation. If you want to change previous settings, click Back, and follow the instructions on the screen.



10. The EPSON Digital Camera driver is now installed on your computer. To add the Scanners and Cameras icon to the Control Panel window, close and reopen the window, or press the F5 key.



Scanners and Cameras icon

To reinstall EPSON Photo!2 and EPSON Photo File Uploader, open the CD folder and double-click Cdsetup.exe. For further instructions on installation, see your digital camera software manual.

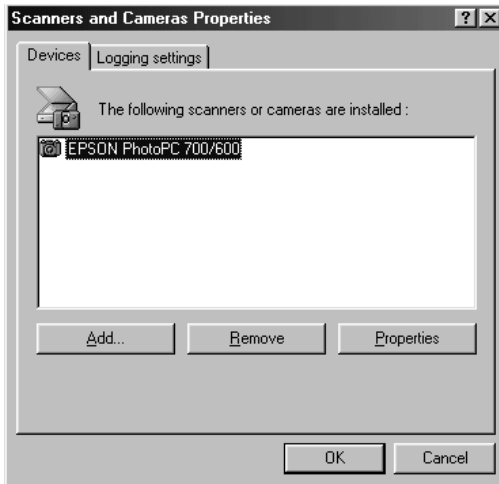
---

## Viewing Camera Properties

After you install the EPSON Digital Camera driver on your computer, the Scanners and Cameras icon appears on the Control Panel, allowing you to see camera properties easily. Also a new directory appears in the System menu.

## *From the Scanners and Cameras icon*

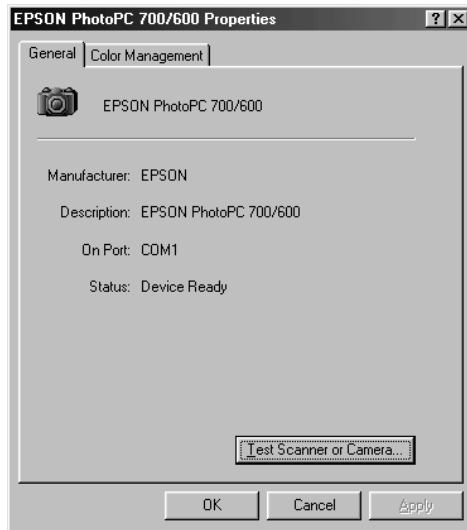
Click the Scanners and Cameras icon on the Control Panel. You will see the dialog box below.



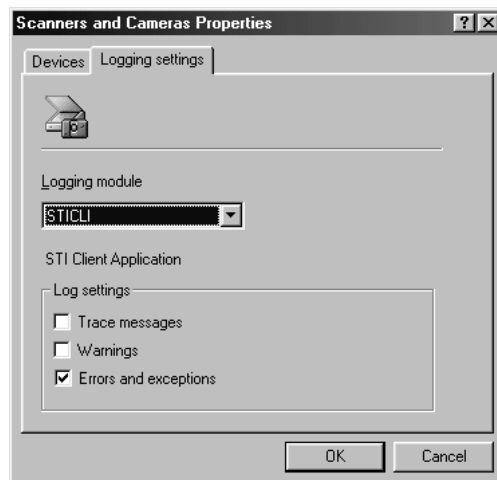
To add another device to your computer, click the Add button. The Add New Hardware Wizard screen appears. Then follow step 3 on page 2.

To remove any device, click to highlight the device name in the list, then press the Remove button. When there is no scanner or camera installed, the Scanners and Cameras button disappears from the Control Panel.

To see the properties of the device, click the Properties button. The General menu appears as follows, indicating the camera type, manufacturer, port, and the current status of your camera.



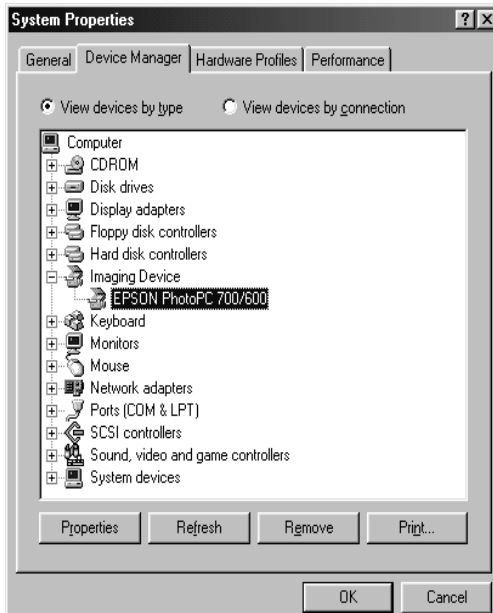
Click the Logging settings tab to see logging information on the camera and computer.





## From the System icon

Click the System icon on the Control Panel and the Device Manager tab. The following dialog box appears.



Under the Imaging Device directory, you will see the name of the camera you have installed in the computer. Click the camera name or the Properties button to see camera properties and driver information as shown below.

