

Optimal PRINT Image Matching for Printing from Digital Cameras

What is PRINT Image Matching?

This system enables stunning printing to be achieved easily through the combination of a digital camera loaded with the PRINT Image Matching function and a printer that supports such matching.

Print commands are attached to photo data during digital camera photography and the printer adheres to these commands to print photos with the color match that optimally fulfills the objectives of the digitally composed shots. This, indeed, is a new technology that links digital cameras and printers.

What effects does it produce?

Do you find that sometimes the printout of a digital camera image does not meet your expectations? If so, this is because the digital camera and printer are inadequately matched. What is needed to get the right effect is PRINT Image Matching.

<Effect 1> Color and brightness data are transferred to the printer in the form of print commands to achieve optimum color and brightness.

The factors determining image quality – “color space,” which determines richness of color expression and “print gamma,” which determines color brightness – are transferred as print commands to enhance printing.

<Effect 2> The photography objectives are reflected in the printing results.

For instance, if the subject is a macro shot, printing will reflect the aimed-for vivid colors with sharp image quality. If the photo is a portrait shot, and the print commands have been set at the digital camera to give a soft toned, delicate color, then printing will reproduce the image intended by the digital camera user.

<Effect 3> Printing can express characteristics of a digital camera.

Combining a digital camera loaded with the PRINT Image Matching function and a printer that supports PRINT Image Matching makes possible print images that reflect the characteristics of a particular digital camera. This means that color will be expressed differently for print images depending on the type of digital camera and the settings of that camera.

How is PRINT Image Matching used?

The PRINT Image Matching function can be utilized if this EPSON printer is used to print images from digital cameras loaded with the PRINT Image Matching function. Print commands are attached to image data for printing if photos are taken with a digital camera loaded with the PRINT Image Matching function.

Note:

- ❑ See the relevant digital camera instruction manual for details concerning the use of digital cameras loaded with the PRINT Image Matching function.
- ❑ Please check with the digital camera manufacturer to determine whether your digital camera is loaded with the PRINT Image Matching function.

Printing without a PC

Insert the digital camera memory card into the PC card slot, specify the image to be printed to recall print commands registered in the image file and print.

Note:

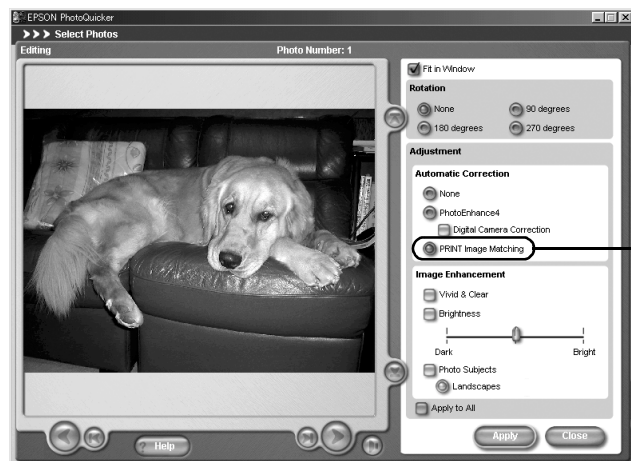
Set PhotoEnhance on the printer operation panel to Off if the PRINT Image Matching function is not to be used.

Printing with a PC

EPSON PhotoQuicker is automatically launched when a memory card is inserted in the PC card slot and image files with print commands are uploaded. Just specify the desired image to enable easy printing.

Note:

- ❑ EPSON PhotoQuicker lets the user decide whether or not the PRINT Image Matching function is to be used.
- ❑ If EPSON PhotoQuicker is not used, and printing is performed from general retouch software that does not support PRINT Image Matching, the PRINT Image Matching function cannot be used.



Enable or disable the function here

Media for which PRINT Image Matching is enabled

PRINT Image Matching is enabled when the following media are used:

- Plain Paper/EPSON Premium Ink Jet Plain Paper/EPSON Bright White Ink Jet Paper
- EPSON Photo Paper/EPSON Matte Paper-Heavyweight
- EPSON Premium Glossy Photo Paper/EPSON Premium Semigloss Photo Paper

Can this function be used without a digital camera?

Use of the PRINT Image Matching function is not restricted to digital camera images. Support of items such as input devices handling images and application software is being planned. This means even more effective printing from a wider range of devices supporting PRINT Image Matching can be looked forward to.