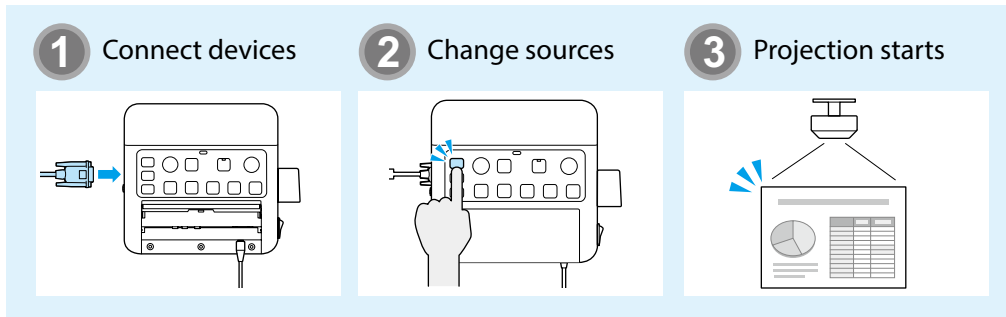
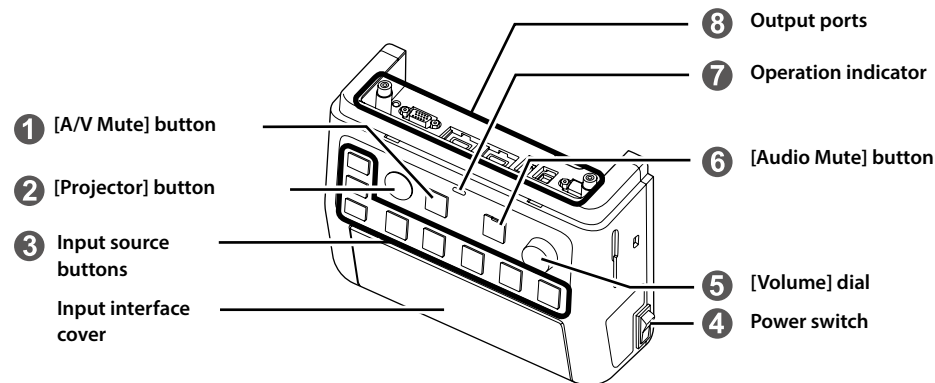


# Connection & Control Box Operation Guide

## How To Switch Input Sources



## Part Names and Functions



**1** Temporarily interrupts video and audio output from the projector or speakers, except for the [Mic] port and the [AUX In] port.

**2** Turns the projector power on or off.

**3** Switches the source.

**4** Turns the power on or off.

**5** Adjusts the volume of the projector or the external speakers.

**6** Temporarily mutes the audio. While audio is muted, the indicator of the mute button turns blue.

**7** Indicates the status of the Connection & Control Box. (This does not indicate the status of the projector.)

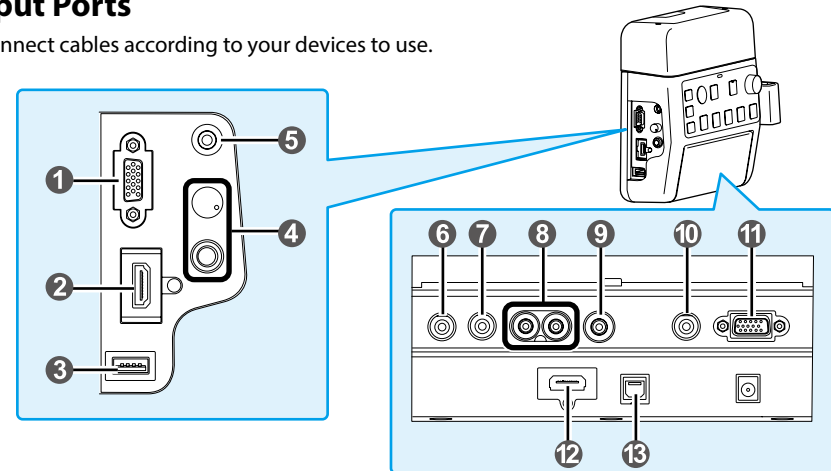
- : Operating normally.
- : Sleep mode. This device enters sleep mode after eight hours of inactivity. Press any button to resume.
- : An error has occurred. Unplug the Connection & Control Box, and contact your dealer. For inquiries: Projector's "User's Guide"

**8** Connects the projector to this device. See the *Installation Manual* for more details.

You can stop this device from entering sleep mode. Turn On the power switch while simultaneously holding down the [Projector] and the [LAN] buttons. To return to the original status, turn On the power switch while simultaneously holding down the [Projector] and the [A/V Mute] buttons.

## Input Ports

Connect cables according to your devices to use.



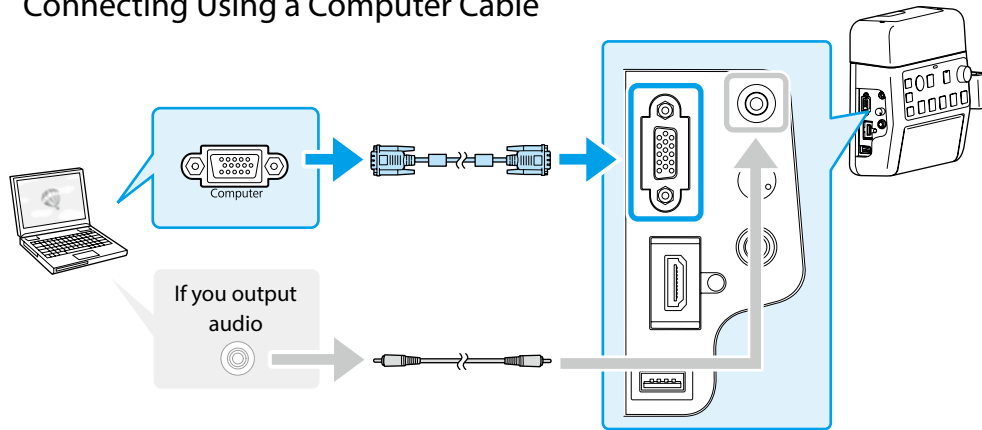
- 1** [Computer1] input port (Mini D-Sub 15-pin (female))
- 11** [Computer2] input port
- 2** [HDMI1] port
- 12** [HDMI2] port
- 3** [USB-A] port
- 4** [Mic] port (φ 6.3 mm stereo pin jack, 2 plugs)/ [Volume] dial (mic input)
- 5** [Audio1] port
- 10** [Audio2] port (Φ 3.5 mm stereo mini pin jack, 3 plugs)
- 6** [AUX In] port We recommend using a shielded cable.
- 7** [REC Out] port
- 8** [Audio-L/R] port (RCA jack)
- 9** [Video] input port (RCA jack)
- 13** [USB-B] port



- When using a commercially available dynamic microphone, connect to the **4** [Mic] port. Plug-in power is not supported.
- When inputting audio from a portable audio player and such, connect the audio cable to **6** [AUX In] port. The audio input from **6** [AUX In] port is always played regardless of the selected source.
- When the projector's source is set to HDMI, USB display, or LAN, audio from audio devices connected to the [Mic] or [AUX In] ports cannot be simultaneously output from the projector's built-in speakers.
- When connecting a recording device, connect the audio cable to **7** [REC Out] port. The audio input from the audio input ports, the Aux In, and the Mic port is output. Audio is output in a constant level and cannot be adjusted.

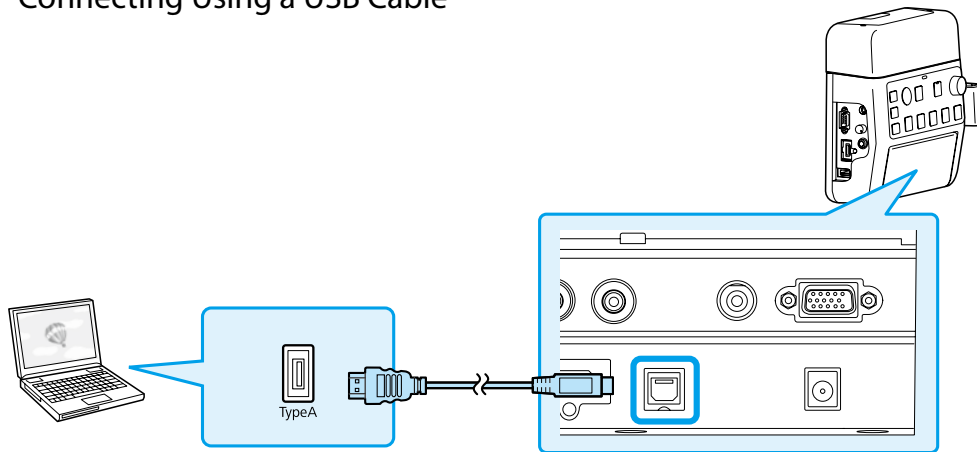
## ■ Connection Examples

### Connecting Using a Computer Cable



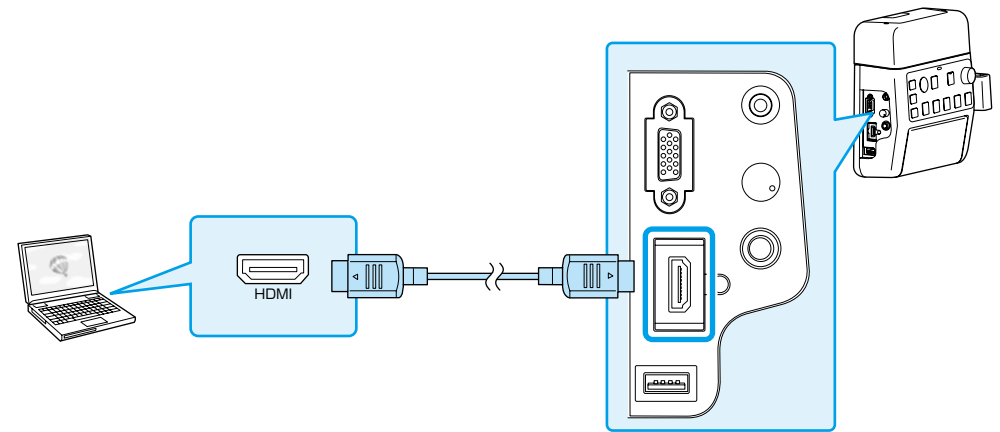
Connect the ports in either of the following combinations.  
When using [Computer1] input port → [Audio1] port  
When using [Computer2] input port → [Audio2] port

### Connecting Using a USB Cable

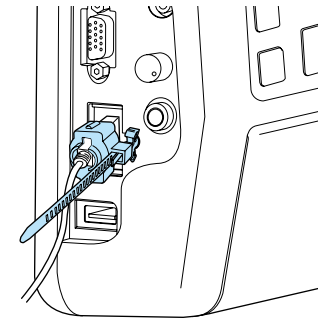


Be sure to connect the projector and the computer directly, not via a USB hub.

### Connecting with HDMI Cables



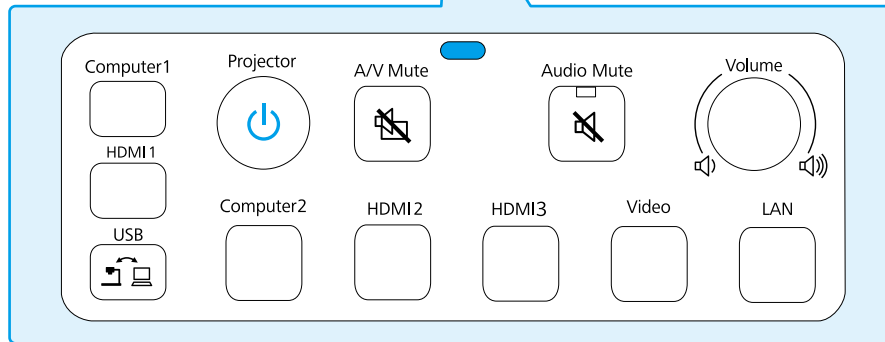
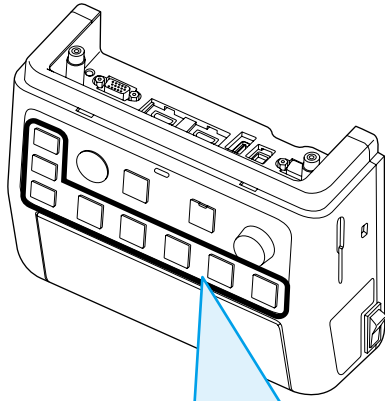
If you use a thick HDMI cable, it may disconnect under its own weight.  
Use the HDMI cable clamp to secure the cable.



- When the projector only has one HDMI port, make sure you connect the HDMI cable to the [HDMI1] port.
- If you switch the HDMI1 source and the HDMI2 source while playing a movie, the movie may freeze. Stop the movie before switching sources.

## Switching Images

### Names and Functions of the Input Source Buttons



Press the Input Source buttons to input images and audio from the device connected to the port as shown in the following table.

Switching sources may take a while.

| Input Source Button | Image Input         | Audio Input*         |
|---------------------|---------------------|----------------------|
| Computer1           | Computer1           | Audio1               |
| HDMI1               | HDMI1               | HDMI1                |
| USB                 | USB Display ↔ USB-A | USB Display/Audio2** |
| Computer2           | Computer2           | Audio2               |
| HDMI2               | HDMI2               | HDMI2                |
| HDMI3               | HDMI3***            | HDMI3***             |
| Video               | Video               | Audio-L/R            |
| LAN                 | LAN                 | LAN/Audio2**         |


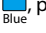
\*Audio from the [Mic] port or [AUX In] port on this device is also input.

\*\*If the projector supports audio transfer using USB display or over a network, audio is input through USB Display or LAN. When you use a projector that does not support audio transfer, [Audio2] is input.

\*\*\*Inputs images and audio from the device connected to the projector's HDMI3 port.

## Troubleshooting


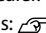
### No images appear

|   |   |
|---|---|
| Did you turn on the connected device?   | Turn on the power of the connected device.  |
| Did you turn on the projector?  | Press the [Projector] button.   |
| Did you press the correct Input Source button for the connected device you want to play?                                  | When no specific input source is selected, [Computer1] button is automatically selected and images from the [Computer1] input port are displayed. Press the correct Input Source button corresponding to the connected device.  |
| Did you press the [A/V Mute] button?  | Press the [A/V Mute] button again.  |
| Is the operation indicator light on  ? | This device enters sleep mode after eight hours of inactivity. Press any button and the indicator turns to  , press the Input Source button. |



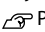
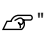
### The source can not be switched

|  |   |
|--|---|
| Did you press the correct Input Source button corresponding to the connected device? | Press the correct Input Source button.                  |
| Is the Message Broadcasting dialog displayed?  | Press the [Projector] button and restart the projector. |

### The Connection & Control Box is not operating

|   |   |
|---|---|
| Is the power of this product on?  | Turn on the power switch.   |
| Is the power cable plugged?   | Plug in the power cable of the Connection & Control Box.  |
| Is the operation indicator flashing  ? | Unplug the power cable of the Connection & Control Box, and contact your dealer.<br>For inquiries:  Projector's "User's Guide" |

### No sound comes out or the sound is faint

|   |  |
|---|--|
| Is the projector's audio input setting correct?                             | Check the projector's "A/V Output" or "Audio Settings".<br> Projector's "User's Guide"  |
| Did you turn down the audio volume of the projector or speakers too much?   | Turn up the volume with the [Volume] dial.<br> Projector's or Speakers' "User's Guide"  |
| Is the microphone level appropriately set for the projector or this device? | Adjust the input level of the microphone.<br> Projector's "User's Guide", "Input Ports"                                       |
| Is the audio cable of the connected device correctly connected?             | Check the connection of the audio cable.<br> "Input Ports", "Installation Manual" - "Connection example for outputting audio" |
| Is there a cable connected to the projector's audio output port?            | If a cable is connected to the projector's audio output port, sound does not come out from the built-in speaker.   |