

Be sure to read the accompanying User's Guide before using the projector.

WARNING

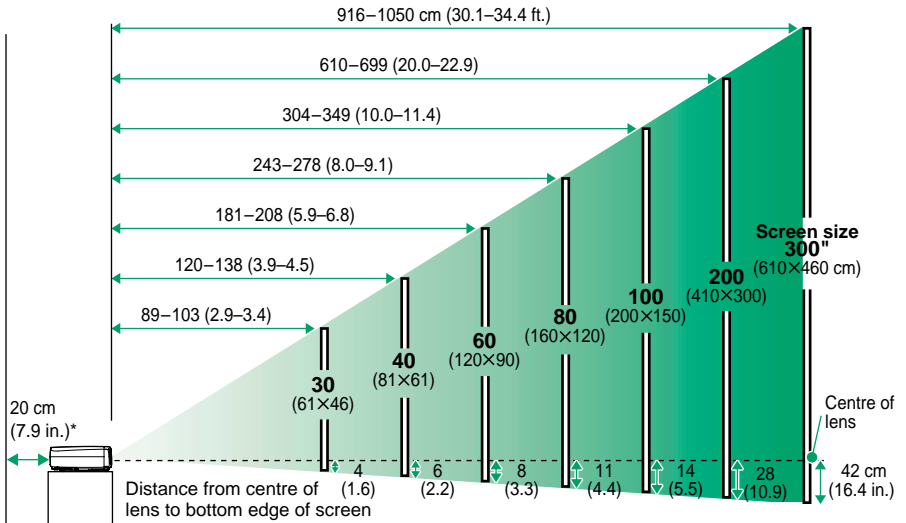
Do not look into the lens while the projector's power is turned on.

Adjusting the Image Size



User's Guide
"Screen Size and Projection Distance"

The size of the projected image is basically determined by the distance from the lens to the screen. The values should be used as a guide for setting up the projector.



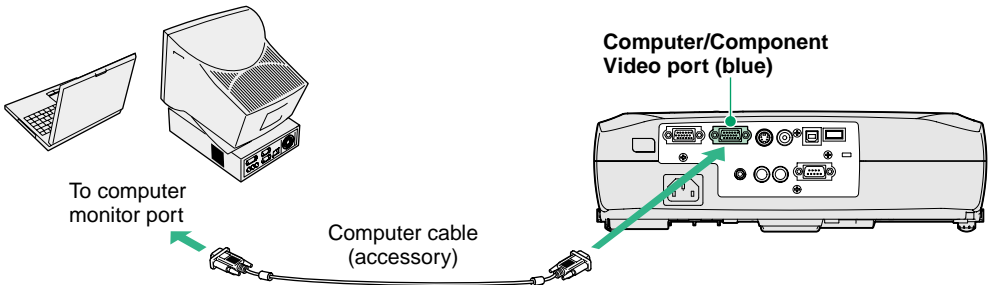
* When installing against a wall, leave about 20 cm (7.9 in.) between the projector and the wall.

Connecting to a Computer



User's Guide
"Connecting to a Computer"


Turn off the power for both the projector and the computer before connecting them.



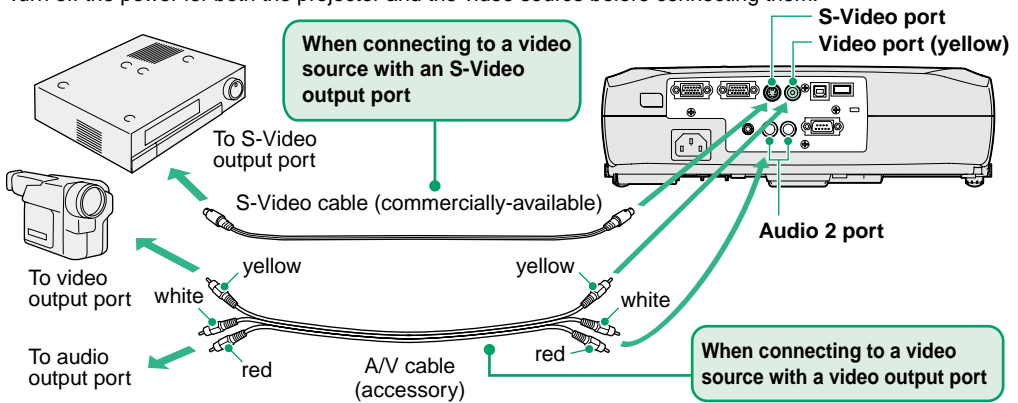
Tip

The computer cable supplied with the projector may not match the monitor port on some computers. In such cases, you will need to purchase a separate adapter.

Connecting to a Video Source

 User's Guide
"Connecting to a Video Source"

Turn off the power for both the projector and the video source before connecting them.



* To output sound from the video equipment through the projector's built-in speaker, connect the video equipment and the projector with the accessory A/V cable (white/red).

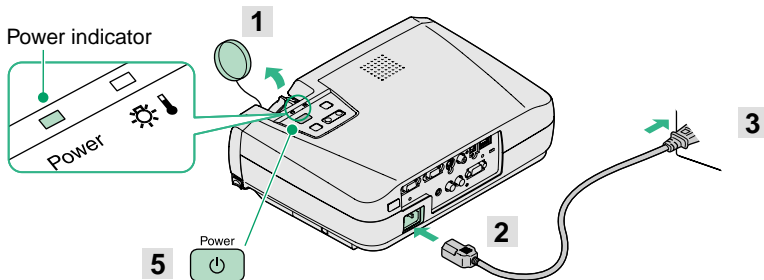


Tip

If connecting a component video source (such as a DVD player), you can use the optional component video cable to connect the source to the Computer/Component Video port at the rear of the projector.

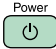
Preparation before Projecting

 User's Guide
"Turning On the Projector"



- 1 Remove the lens cover.**
- 2 Insert the projector's power cable into the projector.**
- 3 Insert the power cable into an earthed electrical outlet.**

The Power indicator will light orange.

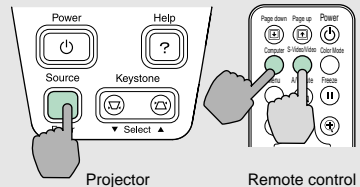
- 4 Turn on the power for the signal input source.**
- 5 Press  to turn on the projector's power.**

The Power indicator will flash green, and projection will then start (warm-up in progress).




Tip


- If no images are projected, change the input signal.



- If connecting to a computer with a built-in monitor, or to a laptop computer, you may need to change the output destination using the buttons or setting menus.

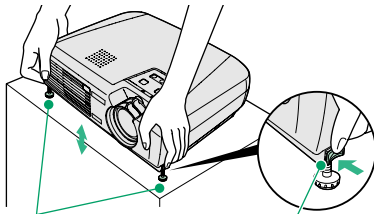
 User's Guide "Turning On the Power and Projecting Images"

Adjustments

 User's Guide
"Adjusting the Screen Image"

● Adjusting the image angle

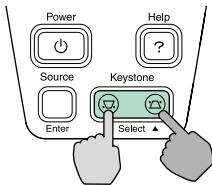
While pressing the foot adjust buttons at either side, lift up the front of the projector.
When the desired angle is obtained, release the foot adjust buttons.



Front adjustable feet

Foot adjust button

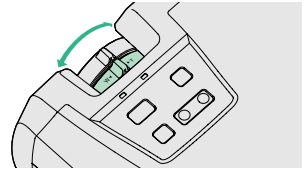
When the projector is tilted, it will cause keystone distortion to appear in the image, but this distortion can be corrected using the automatic keystone correction function as long as the vertical angle of tilt is within a range of approximately 15°. If you would like to make further minor adjustments to the effects of automatic keystone correction, use [keystone] on the projector's control panel.



● Adjusting the image size and focus

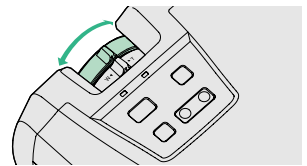
Fine adjustments to image size

Turn the zoom ring to adjust the image size.
Turn to the "W" side to increase the image size, and turn to the "T" side to reduce the image size.



Adjusting the focus


Turn the focus ring to adjust the focus.



Tip

The following adjustments can also be made.

• Automatic setup (only when computer images are projected)


 User's Guide "Adjusting Computer Images"

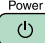
When projecting computer images, the input signals are detected automatically and adjusted so that the optimum images are projected. If the results of automatic adjustment are not satisfactory, individual settings can also be adjusted manually using the menus.

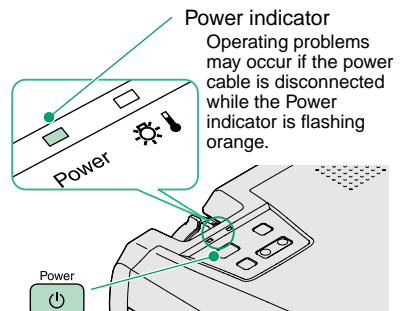
• Other adjustments User's Guide "Using the Configuration Menu Functions"

Press [Menu] on the remote control to display the configuration menu. You can use the configuration menu functions to adjust setting such as brightness, contrast and colour.

Turning Off the Projector

 User's Guide
"Turning Off the Projector"

- 1 Turn off the power for all sources connected to the projector.
- 2 Press  twice to turn off the power.
The Power indicator will flash orange (cool-down in progress/about 20 seconds).
- 3 Check that the Power indicator lights orange, and then disconnect the power cable from the electrical outlet.



Useful Functions

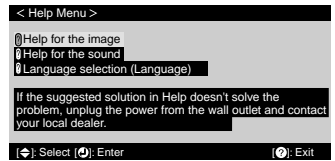
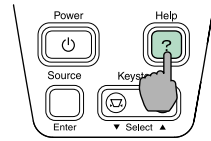
Colour mode selection	The following six preset types of colour mode can be selected by pressing [Color Mode] on the remote control. <ul style="list-style-type: none"> • sRGB • Normal • Meeting • Presentation • Theatre • Game 	User's Guide "Selecting the Colour Mode"
A/V Mute	Playback of images and sound can be momentarily paused and then resumed each time [A/V Mute] on the remote control is pressed.	User's Guide "A/V Mute"
Automatic Setup	Automatic setup detects the status of the signals coming from the connected computer, and automatically adjusts these signals so that the optimum images can be obtained.	User's Guide "Adjusting Computer Images"

Troubleshooting

User's Guide "Troubleshooting"

Using the help function

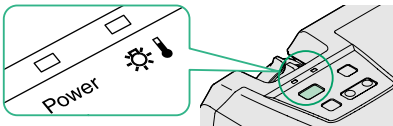
- 1** Press on the projector's control panel.
- 2** Select the item to view.
Press [▼ Select ▲] (or the [▲] and [▼] on the remote control).
- 3** Accept the selection.
Press [Enter] on the control panel or on the remote control.
- 4** The help contents will then be displayed.
To clear the display, press on the control panel.



Checking the indicators

These indicators alert you to problems with projector operation. The following tables show what the indicators mean and how to remedy problems that they indicate.

Refer to "When Having Some Trouble" in the *User's Guide* for further details.



(Warning) indicator

Lit Flashing

Power indicator Lit Flashing

Status	Problem and remedy
Orange 	Standby condition The power cable should only be disconnected in this condition. Projection starts when you press .
Orange 	Cool-down in progress The projector changes to standby (indicator lights orange) after about 20 seconds.
Green 	Projection in progress
Green 	Warm-up in progress After warm-up finishes, projection starts when an image signal is input.

Status	Problem and remedy
Red 	High temperature inside projector (overheating) The lamp will turn off automatically and projection will stop. Wait for about 5 minutes, unplug the power cable and then plug it back in again. Then press to turn the projector back on.
Red (0.5-second intervals)	Lamp problem Remove the lamp and check if it is broken. If the lamp is not broken, reinsert it. If the lamp is broken replace by a new lamp, or contact your local dealer for further advise. *1
Red (1-second intervals)	Internal problem Stop using the projector and send it for service. *2
Orange 	High-speed cooling in progress. If the temperature rises too high again, projection will stop automatically. Check that the air filter and air exhaust vent are clear, and that the internal room temperature is not too high.

*1 Contact your dealer for a spare lamp.

*2 For repairs, contact your dealer or the nearest address provided at "International Warranty Conditions" in *Safety Instructions/World-Wide Warranty Terms*.