

# Understanding This User's Guide

You can carry out the following tasks by clicking on these buttons.



Displays the print window.



Displays or hides bookmarks.



Click this button if the text or illustrations are too small to see easily. Move the pointer to the place you would like to view and then click the left mouse button to enlarge the document at that place. If you hold down the [Ctrl] key when you click the left mouse button, the document viewing size will be reduced.



Moves to another page in the document (first/previous/next/last page).



Moves forward or back to the page that was last displayed. You can use this to return to the page you were viewing if you have jumped to a different page such as a reference page or the Glossary.



Displays the page at actual size.



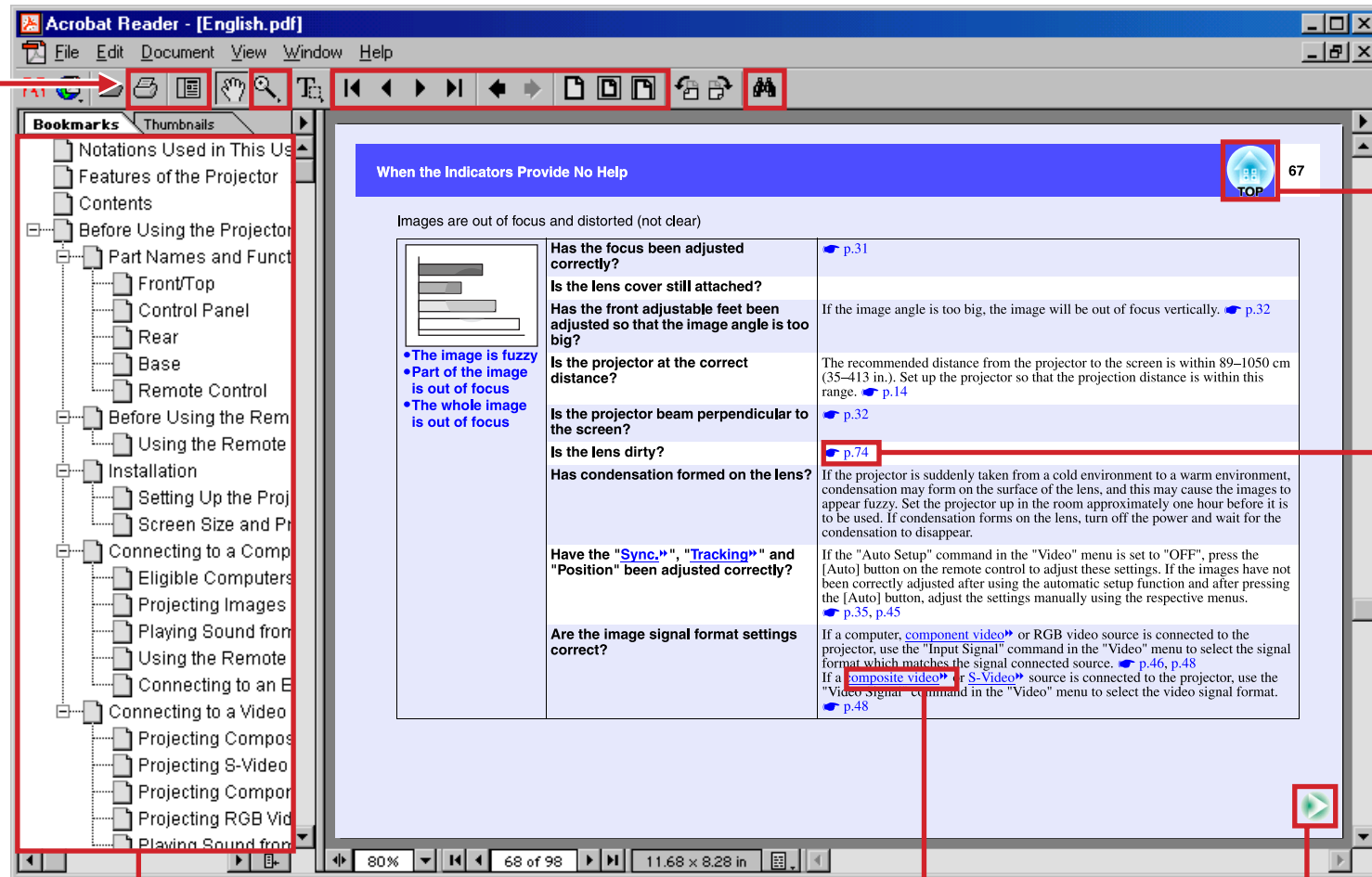
Displays the whole of a page in a single window.



Displays the page so that the width of the page is the same as the width of the window.



Searches for text.



Click to jump to the TOP page.



Jumps to a page that contains a related topic or a more detailed explanation.



Indicates that an explanation of the underlined word or words in front of this symbol appears in the glossary of terms. Click to jump to the Glossary page.



This is displayed when the contents continue on to the next page. Click to move to the next page.



This is displayed when the contents continue from the previous page. Click to move to the previous page.

[Bookmarks]  
Click on the title of a section to jump to the first page for that section.