

Useful Functions

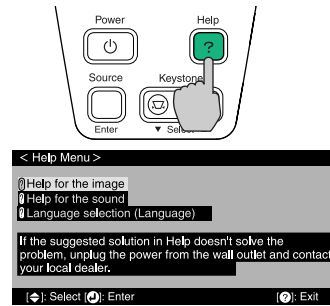
Colour mode selection	The following six preset types of colour mode can be selected by pressing [Color Mode] on the remote control. • sRGB • Normal • Meeting • Presentation • Theatre • Game	User's Guide "Selecting the Colour Mode"
A/V Mute	Playback of images and sound can be momentarily paused and then resumed each time [A/V Mute] on the remote control is pressed.	User's Guide "A/V Mute"
Automatic Setup	Automatic setup detects the status of the signals coming from the connected computer, and automatically adjusts these signals so that the optimum images can be obtained.	User's Guide "Adjusting Computer Images"

Troubleshooting

EMP-735 User's Guide
"Troubleshooting"

Using the help function

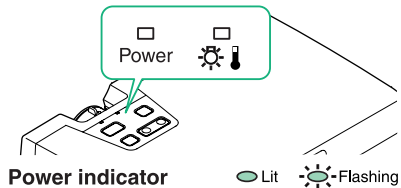
- Press on the projector's control panel.
- Select the item to view.
Press [▼ Select ▲] (or the [▲] and [▼] on the remote control).
- Accept the selection.
Press [Enter] on the control panel or on the remote control.
- The help contents will then be displayed.
To clear the display, press on the control panel.



Checking the indicators

These indicators alert you to problems with projector operation. The following tables show what the indicators mean and how to remedy problems that they indicate.

Refer to "Using the Indicators" in the *EMP-735 User's Guide* for further details.



Power indicator Lit -Flashing

(Warning) indicator

Lit -Flashing

Status	Problem and remedy
Red	High temperature inside projector (overheating) The lamp will turn off automatically and projection will stop. Wait for about 5 minutes, unplug the power cable and then plug it back in again. Then press to turn the projector back on.
Red (0.5-second intervals)	Lamp problem Remove the lamp and check it for cracks. If there are no cracks, reinsert the lamp. If the lamp is broken, replace with a new lamp, or contact your local dealer for further advice. *1
Red (1-second intervals)	Internal problem Stop using the projector and ask for service. *2
Orange 	High-speed cooling in progress. If the temperature rises too high again, projection will stop automatically. Check that the air inlet and air exhaust vent are clear, and that the internal room temperature is not too high.

*1 Contact your dealer to purchase a new lamp.

*2 For repairs, contact your dealer or the nearest address provided at "International Warranty Conditions" in *Safety Instructions/World-Wide Warranty Terms*.

EPSON[®] EMP-735[™] Quick Reference Guide

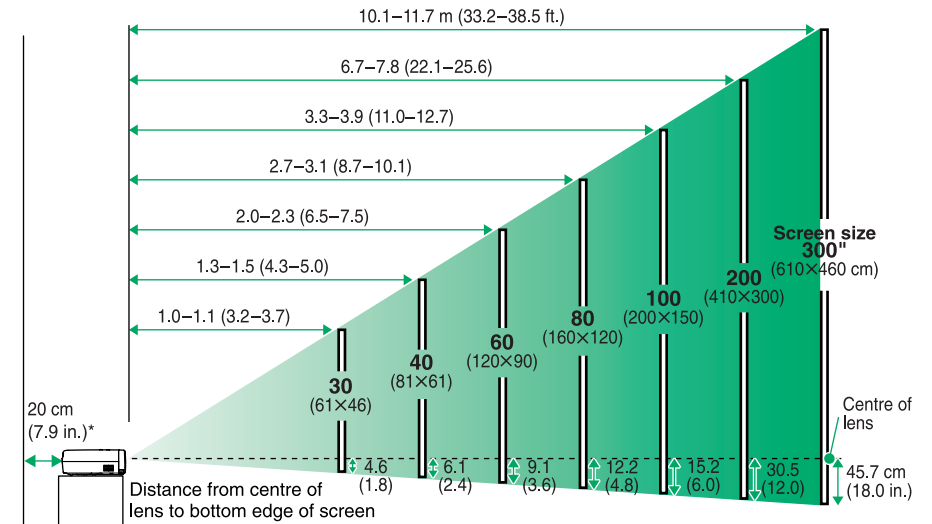
Be sure to read the accompanying EMP-735 User's Guide before using the projector.

WARNING Do not look into the lens while the projector's power is turned on.

Adjusting the Image Size

EMP-735 User's Guide
"Screen Size and Projection Distance"

The size of the projected image is basically determined by the distance from the lens to the screen. The values should be used as a guide for setting up the projector.

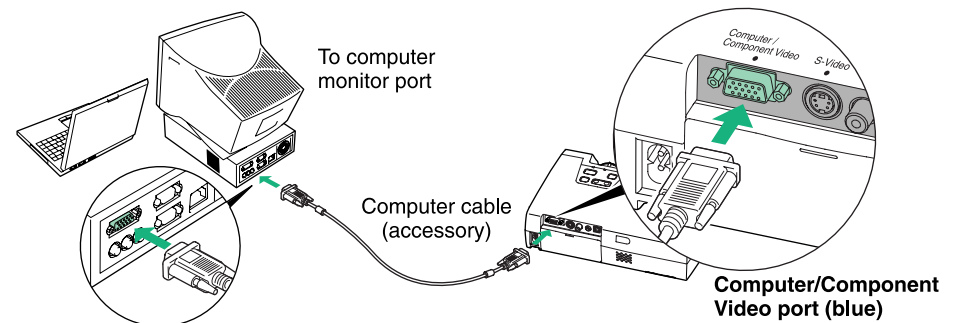


* When installing against a wall, leave about 20 cm (7.9 in.) between the projector and the wall.

Connecting to a Computer

EMP-735 User's Guide
"Connecting to a Computer"

Turn off the power for both the projector and the computer before connecting them.



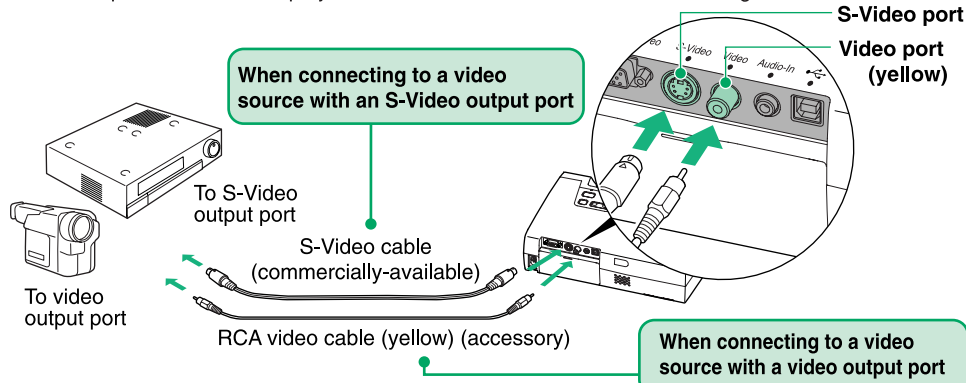
Tip

The computer cable supplied with the projector may not match the monitor port on some computers. In such cases, you will need to purchase a separate adapter.

Connecting to a Video Source

EMP-735 User's Guide
"Connecting to a Video Source"

Turn off the power for both the projector and the video source before connecting them.

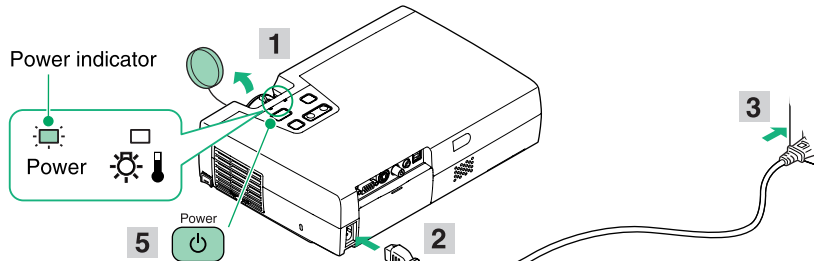



Tip

- If connecting a component video source (such as a DVD player), you can use the optional component video cable to connect the source to the Computer/Component Video port at the rear of the projector.
- To output the audio from the video source through the built-in speaker, connect to Audio-In port at the rear of the projector using a 3.5ø stereo mini jack cable or a 2RCA (L-R)/stereo mini jack (zero impedance) cable.

Preparation before Projecting

EMP-735 User's Guide
"Turning On the Projector"

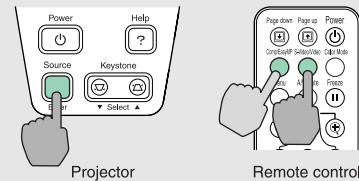


- Remove the lens cover.
- Insert the projector's power cable into the projector.
- Insert the power cable into an earthed electrical outlet.
The Power indicator will light orange.
- Turn on the power for the signal input source.
For video equipment, press [Play] to start playback.
- Press  to turn on the projector's power.
The Power indicator will flash green, and projection will then start (warm-up in progress).



Tip

- If no images appear, change the input source.



- If connecting to a computer with a built-in monitor, or to a laptop computer, you may need to change the output destination using the buttons or setting menus on the computer.

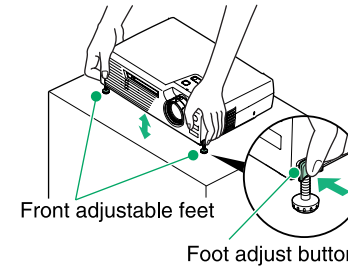
EMP-735 User's Guide "Turning On the Power and Projecting Images"

Adjustments

EMP-735 User's Guide
"Adjusting the Screen Image"

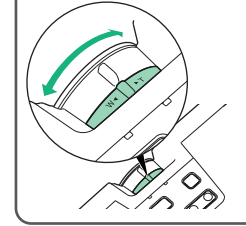
Adjusting the image angle

Using the foot adjust buttons, adjust the projection angle of the projector. The automatic keystone correction function is activated when the vertical tilt is within approximately 15 degrees, so images are automatically adjusted to eliminate any distortion.

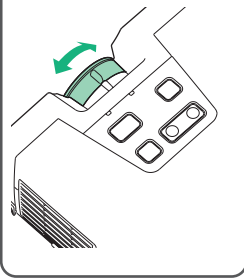


Adjusting the image size and focus

Fine adjustments to image size
Adjust the image size by turning the zoom ring. Turn it to the "W" side to enlarge images, and to the "T" side to reduce images.

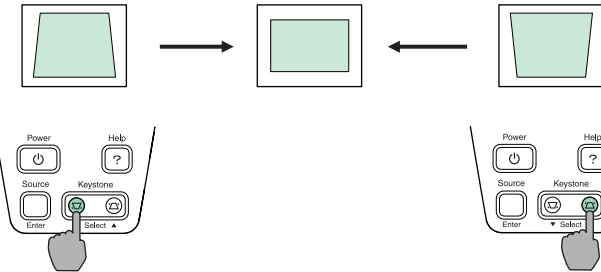


Adjusting the focus
Turn the focus ring to adjust the focus.



Fine adjustments of automatic keystone correction results

To make further adjustments after an automatic keystone correction has been performed, press the [Keystone] button on the projector's control panel.




Tip

Other adjustments EMP-735 User's Guide "Using the Configuration Menu Functions"

Press [Menu] on the remote control to display the configuration menu. You can use the menu functions to adjust settings such as brightness, contrast and colour.

Turning Off the Projector

EMP-735 User's Guide
"Turning Off the Projector"

- Turn off the power for all sources connected to the projector.
- Press  twice to turn off the power.
The Power indicator will flash orange (cool-down in progress/about 45 seconds).
- Check that the Power indicator lights orange, and then disconnect the power cable from the electrical outlet.

