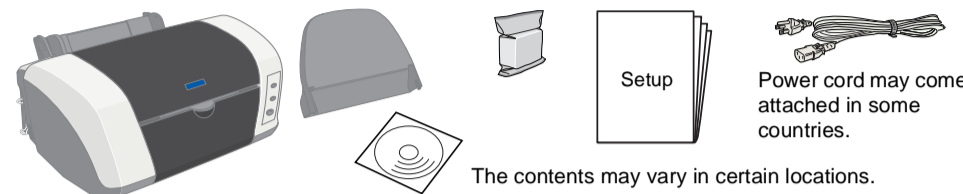


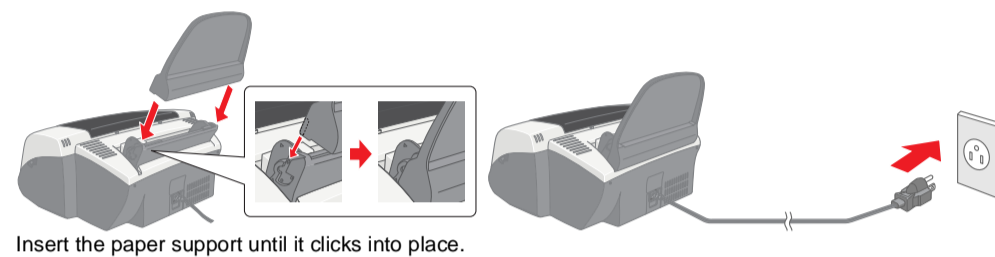
# Setup

## 1 Unpacking

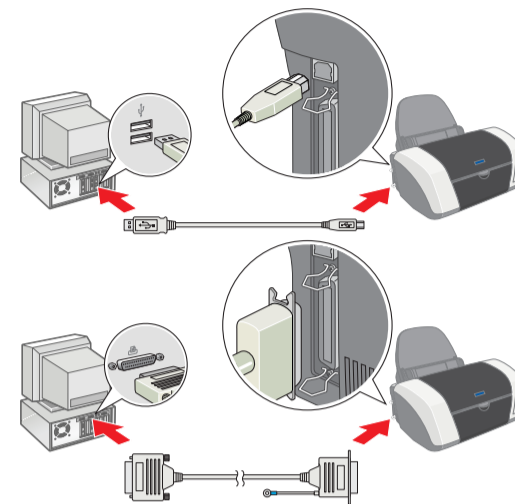
### 1. Unpack the printer.



### 2. Attach the printer parts.



### 3. Connect the printer.



## 2 Setting up

### Installing the Printer Software

**Note:**  
For installing the Photo Print Software, refer to the Photo Print Software Setup on the online Reference Guide.

#### For Windows

- Make sure that the printer is off.
- Insert the printer software CD in the CD-ROM drive. If the installer dialog box does not appear, double-click **SETUP.EXE** in the CD-ROM.
- Select **Install Software**, and then click **Next**.
- Follow the on-screen instructions. After installing the printer software, the on-screen instructions continue with the installation of the ink cartridges.

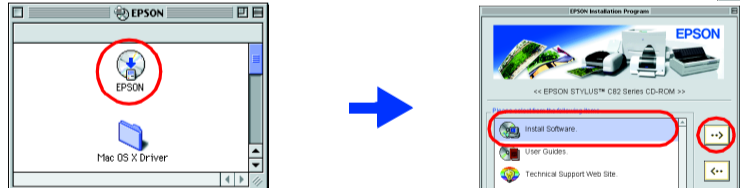


#### For Macintosh

**Caution:**  
Turn off all virus protection programs before you install the printer software.

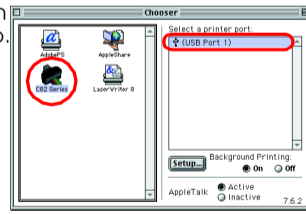
#### For users of Mac OS 8.1 or later (Except Mac OS X)

- Make sure that the printer is off.
- Insert the printer software CD in the CD-ROM drive.
- Double-click the **EPSON** icon, select **Install Software**, and then click **Next**.



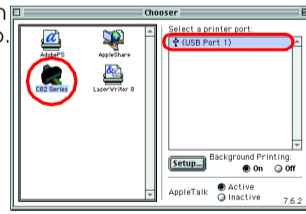
- Follow the on-screen instructions to install the printer software.
- Press the **Power** button to turn on the printer. The print head moves to the ink cartridge installation position.

- Choose **Chooser** from the Apple menu. Then, select the icon for your printer and the port that your printer is connected to.



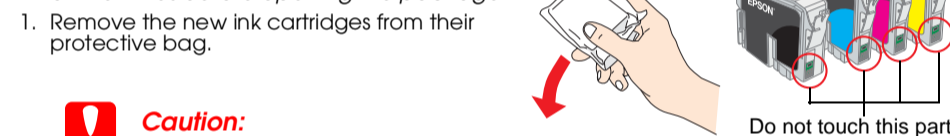
#### For Mac OS X users

- Make sure that the printer is off.
- Insert the printer software CD in the CD-ROM drive.
- Double-click the **Mac OS X Driver** folder, and then double-click the **C82Series.pkg** icon inside it. If the Authorization window opens, click the key icon, enter the administrator's name and password, click **OK**, and then click **Continue**.
- Follow the on-screen instructions to install the printer software.
- Press the **Power** button to turn on the printer. The print head moves to the ink cartridge installation position.
- Follow the instruction below to select your printer:  
Double-click Macintosh HD. → Double-click the Application folder. → Double-click the Utilities folder. → Double-click the Printer Center icon. → Click **Add**. → Select EPSON USB. → Select your printer. → Click **Add**.

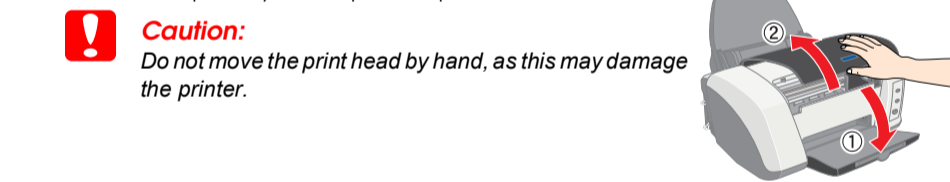


### Installing the Ink Cartridges

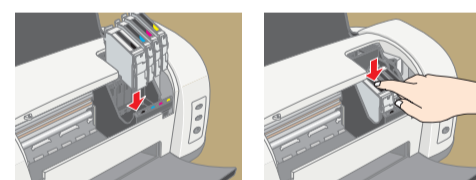
**Note:**  
For best results, shake the ink cartridge four or five times before opening the package.



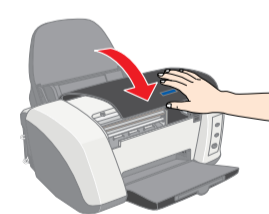
- Remove the new ink cartridges from their protective bag.
  - Caution:**
    - Be careful not to break the hook on the side of the cartridge when you remove it from the protective bag.
    - Do not shake the ink cartridge after removing from the bag; this can cause leakage.
    - Do not remove or tear the label on the cartridge; this can cause leakage.
    - Do not touch the green IC chip on the side of the cartridge. Doing so may prevent normal operation and printing.
- Lower the output tray, then open the printer cover.



- Place the ink cartridges vertically into the cartridge holders. Without applying excessive force, push the ink cartridges down until they click into place.



- Close the printer cover.
- Press the **ink** button. The printer moves the print head and begins charging the ink delivery system. This process takes about **one and half minutes**. While charging, the **Power** light flashes and the printer produces a variety of mechanical sounds. This is normal.



- When the ink charging process is finished, the **Power** light stops flashing and remains on.
  - Caution:**
    - Do not turn the power off during the ink charging process.
    - Do not load paper until ink charging is complete.

- Note:**
    - If the ink end error occurs after the print head moves to its home position, the ink cartridge may not be installed properly. Press the **ink** button again, and reinstall the ink cartridge until it clicks into place.
    - The ink cartridges packaged with your printer are partly used during initial setup. In order to produce high quality printouts, the print head in your printer will be fully charged with ink. This one-off process consumes a quantity of ink and subsequent cartridge sets will last for their full rated life.

- When the ink charging process is finished, the **Power** light stops flashing and remains on.

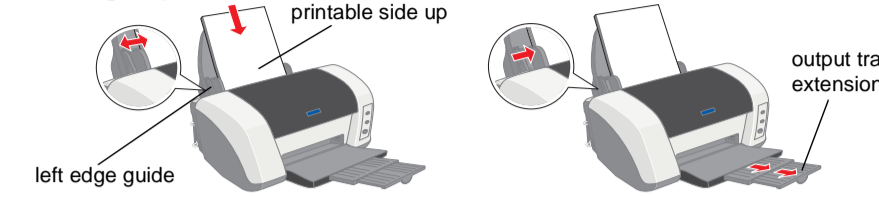
**Warnings** must be followed carefully to avoid bodily.

**Cautions** must be observed to avoid damage to your equipment.

**Notes** contain important information and useful tips on the operation of your printer.

## 3 Checking the Printer

### Loading Paper



Your printer is now ready to use.

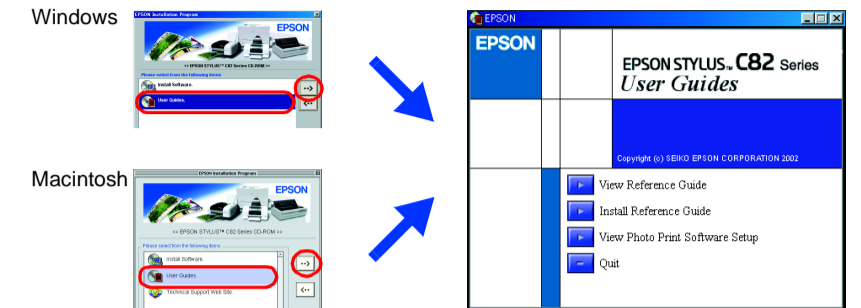
See "Printing Basics" on the online Reference Guide for detailed instructions when printing for the first time. The online Reference Guide also contains information on the following:

- Various Printing Options
- Printer Software Functions
- How To
- Problem Solver
- Product Information
- Safety Instructions

Please refer to it for more details.

### Accessing the Online Reference Guide

- Follow these steps to access the online Reference Guide.
- Insert the printer software CD in the CD-ROM drive.
- For Windows, select **User Guides** in the dialog box, and then click **Next**. For Macintosh, double-click the **EPSON** icon, select **User Guides**, and then click **Next**.



On Mac OS X, the dialog box does not appear when the printer software CD is inserted. To access the online Reference Guide, double-click **English \User Guides \REF\_G \INDEX.HTM**.

## Problem Solver

### Online problem-solving

The EPSON's Technical Support Web Site provide you with tips to help solve problems. Access the Technical Support in the following ways:

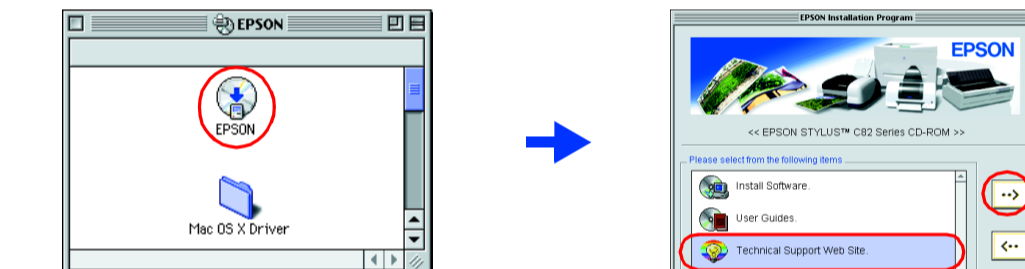
#### For Windows users

- You can also access them by clicking **Technical Support** in the Status Monitor 3 dialog box or on the Main menu of the printer software.
- For further information on the customer support services available in your area, see the online Reference Guide.

#### For users of Mac OS 8.1 or later (Except Mac OS X)

- Insert the CD in the CD-ROM drive.
- Double-click **EPSON** icon.
- Select **Technical Support Web Site** and click **Next**.

For further information on the customer support services available in your area, see the online Reference Guide.



#### For Mac OS X users

Access the site at:  
<http://support.epson.net/StylusC82/>

### Error indicators

You can identify many common problems using the lights on the printer's control panel. Use the following table of light patterns to diagnose the problem, and then follow the recommended corrective measures.

Lights	Problem and Solution
	<b>Paper out</b> No paper is loaded in the printer. Load paper in the sheet feeder, and then press the <b>paper</b> button. The printer resumes printing and the light goes out.
	<b>Paper jam</b> Paper has jammed in the printer. Press the <b>paper</b> button to eject the jammed paper. If the error does not clear, open the printer cover and remove all of the paper inside, including any torn pieces. Then, reload the paper in the sheet feeder and press the <b>paper</b> button to resume printing.
	<b>Ink low</b> The ink cartridge is nearly empty. Obtain a replacement black (T0321), cyan (T0422), magenta (T0423), or yellow (T0424) ink cartridge. To determine which cartridge is nearly empty, check the ink level using EPSON Status Monitor 3 (Windows) or EPSON StatusMonitor (Macintosh).
	<b>Wrong cartridge</b> The ink cartridge is empty or not installed. Replace the black (T0321), cyan (T0422), magenta (T0423), or yellow (T0424) ink cartridge with a new one. Use the appropriate black (T0321), cyan (T0422), magenta (T0423), or yellow (T0424) ink cartridge.
	<b>Incorrectly installed ink cartridge</b> The ink cartridge is not installed correctly. If the print head is at the home position, press the <b>ink</b> button to move the print head to the ink cartridge replacement position. Remove and reinsert the ink cartridge. Then continue with ink cartridge installation. If the print head is at the ink cartridge replacement position, remove and reinsert the ink cartridge. Then continue with ink cartridge installation.
	<b>Carriage error</b> The print head carriage is obstructed by jammed paper or other foreign material and cannot return to the home position. Turn off the printer. Open the printer cover and remove any paper or other obstructions from the paper path by hand. Then, turn the printer back on. If the error does not clear, contact your dealer.
	<b>Unknown printer error</b> An unknown printer error has occurred. Turn off the printer and contact your dealer.

= on, = off, = flashing

## Safety Instructions

Read all of the instructions in this section when setting up and using your printer.

#### When choosing a place for the printer

- Avoid places subject to rapid changes in temperature and humidity. Also, keep the printer away from direct sunlight, strong light, or heat sources.
- Avoid places subject to dust, shocks, and vibrations.
- Leave enough room around the printer to allow for sufficient ventilation.
- Place the printer near a wall outlet where the plug can be easily unplugged.
- Place the printer on a flat, stable surface that extends beyond the printer base in all directions. If you place the printer by the wall, leave more than 10 cm between the back of the printer and the wall. The printer will not operate properly if it is tilted at an angle.
- When storing or transporting the printer, do not tilt it, put it vertically or turn it upside down; otherwise, ink may leak from the cartridge.

#### When choosing a power source

- Use only the type of power source indicated on the printer's label.
- Be sure your AC power cord meets the relevant local safety standard.
- Do not use a damaged or frayed power cord.
- If you use an extension cord with the printer, make sure that the total ampere rating of the devices plugged into the extension cord does not exceed the cord's ampere rating. Also, make sure that the total ampere rating of all devices plugged into the wall outlet does not exceed the wall outlet's ampere rating.
- If you plan to use the printer in Germany, the building installation must be protected by a 10 or 16 amp circuit breaker to provide adequate short-circuit protection and over-current protection for this printer.

#### When handling ink cartridges

- Do not open the ink cartridge packages until just before you install them.
- Before installing the new ink cartridge, shake it four or five times before opening its package.
- Do not shake the ink cartridges after removing from the bag; this can cause leakage.
- Be careful not to break the hooks on the side of the ink cartridge when you remove it from the package.
- Keep ink cartridges out of the reach of children. Do not allow children to drink from or otherwise handle the cartridges.
- Be careful when you handle used ink cartridges, as there may be some ink remaining around the ink supply port. If ink gets on your skin, wash the area thoroughly with soap and water. If ink gets into your eyes, flush them immediately with water. If discomfort or vision problems remain after a thorough flushing, see a doctor immediately.
- Do not touch the green IC chip that is located on the side of the cartridge.

- Do not remove or tear the label on the cartridge; this can cause leakage.
- Store each ink cartridge so that the bottom of its packaging faces down.

#### When using the printer

- Do not put your hand inside the printer or touch the ink cartridges during printing.
- Do not block or cover the openings on the printer.
- Do not attempt to service the printer yourself.
- Unplug the printer and refer servicing to qualified service personnel under the following conditions:  
The power cord or plug is damaged; liquid has entered the printer; the printer has been dropped or the cabinet damaged; the printer does not operate normally or exhibits a distinct change in performance.
- Do not insert objects into the slots on the printer.
- Take care not to spill liquid on the printer.
- Leave the ink cartridges installed. Removing the cartridges can dehydrate the printer head and may prevent the printer from printing.

#### Information for United Kingdom Users

##### Use of options

EPSON (UK) Limited shall not be liable against any damages or problems arising from the use of any options or consumable products other than those designated as Original EPSON Products or EPSON Approved Products by EPSON (UK) Limited.

##### Safety information

- Warning:**  
Refer to the rating plate for the voltage and check that the appliance voltage corresponds to the supply voltage.  
**Important:** The wires in the mains lead fitted to this appliance are coloured in accordance with the following code:  
Blue — Neutral  
Brown — Live

##### If you have to fit a plug:

- As the colours of the mains lead of this appliance may not match the coloured markings used to identify the terminals in a plug, please observe the following:  
The blue wire must be connected to the terminal in the plug marked with the letter N.  
The brown wire must be connected to the terminal in the plug marked with the letter L.  
If the plug is damaged, replace the cord set or consult a qualified electrician.  
Replace fuses only with fuses of the correct size and rating.

All rights reserved. No part of this publication may be reproduced, stored in a retrieval system, or transmitted in any form or by any means, electronic, mechanical, photocopying, recording, or otherwise, without the prior written permission of SEIKO EPSON CORPORATION. The information contained herein is designed only for use with this EPSON printer. EPSON is not responsible for any use of this information as applied to other printers. Neither SEIKO EPSON CORPORATION nor its affiliates shall be liable to the purchaser of this product or third parties for damages, losses, costs, or expenses incurred by the purchaser or third parties as a result of: accident, misuse, or abuse of this product or unauthorized modifications, repairs, or alterations to this product, or (excluding the U.S.) failure to strictly comply with SEIKO EPSON CORPORATION's operating and maintenance instructions.

SEIKO EPSON CORPORATION shall not be liable for any damages or problems arising from the use of any options or any consumable products other than those designated as Original EPSON Products or EPSON Approved Products by SEIKO EPSON CORPORATION. SEIKO EPSON CORPORATION shall not be held liable for any damage resulting from electromagnetic interference that occurs from the use of any interface cables other than those designated as EPSON-Approved Products by SEIKO EPSON CORPORATION. EPSON is a registered trademark and EPSON Stylus is a trademark of SEIKO EPSON CORPORATION.

Microsoft and Windows are registered trademarks of Microsoft Corporation.

Apple and Macintosh are registered trademarks of Apple Computer, Inc.

**General Notice:** Other product names used herein are for identification purposes only and may be trademarks of their respective owners. EPSON disclaims any and all rights in those marks.