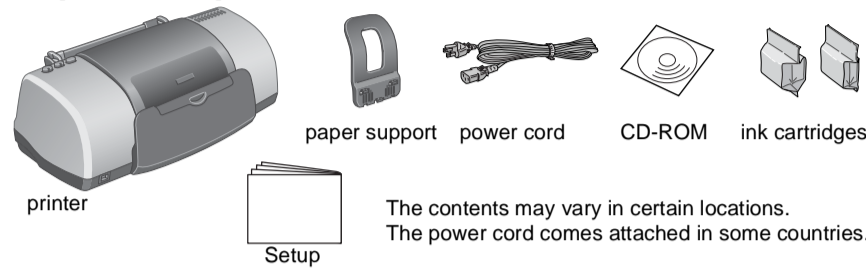


Setup

4041716-00
xxx

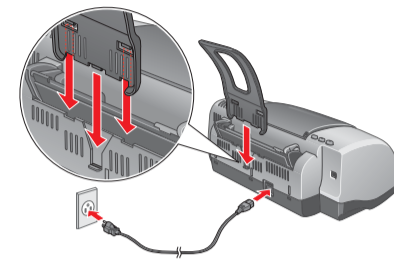
1 Unpacking

1. Unpack the printer.



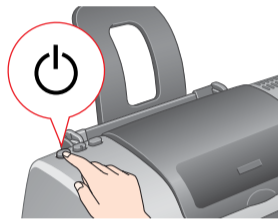
The contents may vary in certain locations. The power cord comes attached in some countries.

2. Attach the paper support and plug in the printer.

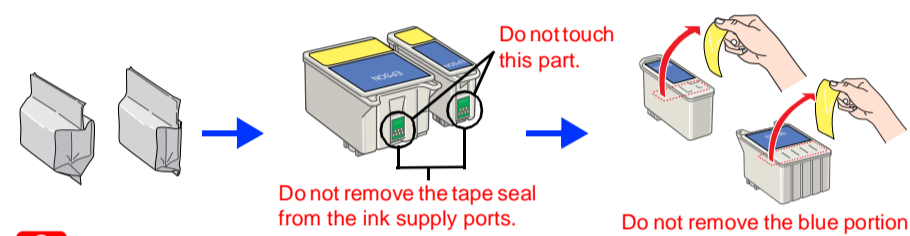


2 Installing the Ink Cartridges

1. Press button to turn on the printer.

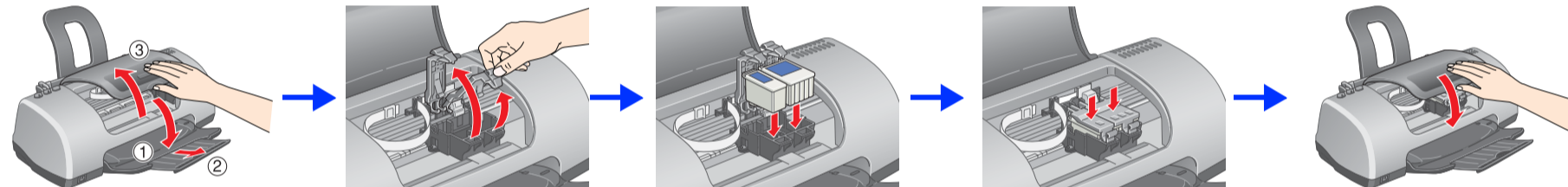


2. Remove the ink cartridges from their protective bags, then peel off the yellow tape.



Caution: Do not shake the ink cartridges; this can cause leakage.

3. Install the ink cartridges as shown below.

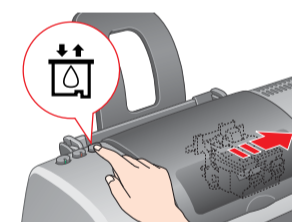


Caution:

- Do not move the print head by hand; otherwise, you may damage the printer.
- Do not load paper until ink charging is complete.

Note: Install both ink cartridges. The printer will not work unless both cartridges are installed properly.

4. Press the ink cartridge replacement button.



The printer begins ink charging. It takes about **one and a half minutes**. While charging, the printer produces a variety of mechanical sounds. This is normal. When the green lamp stops flashing, ink charging is complete.

Caution: Do not turn off the printer during the ink charging process.

Note: The ink cartridges packaged with your printer are partly used during initial setup. In order to produce high quality printouts, the print head in your printer will be fully charged with ink. This one-off process consumes a quantity of ink and subsequent cartridge sets will last for their full rated life.

Safety Instructions

Read all of the instructions in this section when setting up and using your printer.

When choosing a place for the printer

- Avoid places subject to rapid changes in temperature and humidity. Also, keep the printer away from direct sunlight, strong light, or heat sources.
- Avoid places subject to dust, shocks, and vibrations.
- Leave enough room around the printer to allow for sufficient ventilation.
- Place the printer near a wall outlet where the plug can be easily unplugged.
- Place the printer on a flat, stable surface that extends beyond the printer base in all directions. If you place the printer by the wall, leave more than 10 cm between the back of the printer and the wall. The printer will not operate properly if it is tilted at an angle.
- When storing or transporting the printer, do not tilt it, put it vertically or turn it upside down; otherwise, ink may leak from the cartridge.

When choosing a power source

- Use only the type of power source indicated on the printer's label.
- Be sure your AC power cord meets the relevant local safety standard.
- Do not use a damaged or frayed power cord.
- If you use an extension cord with the printer, make sure that the total ampere rating of the devices plugged into the extension cord does not exceed the cord's ampere rating. Also, make sure that the total ampere rating of all devices plugged into the wall outlet does not exceed the wall outlet's ampere rating.
- If you plan to use the printer in Germany, the building installation must be protected by a 10 or 16 amp circuit breaker to provide adequate short-circuit protection and over-current protection for this printer.

When handling ink cartridges

- Do not open the ink cartridge packages until just before you install them.
- Keep ink cartridges out of the reach of children. Do not allow children to drink from or otherwise handle the cartridges.
- Be careful when you handle used ink cartridges, as there may be some ink remaining around the ink supply port. If ink gets on your skin, wash the area thoroughly with soap and water. If ink gets into your eyes, flush them immediately with water. If discomfort or vision problems remain after a thorough flushing, see a doctor immediately.
- Do not shake the ink cartridges; this can cause leakage.
- You must remove the yellow tape seals from the cartridges before installing them; otherwise, the cartridges will become unusable.
- Do not remove the blue portion of the tape seal from the top of the cartridges.
- Do not remove the tape seals from the bottom of the cartridges.
- Do not touch the green IC chip on the side of the cartridge.

- The IC chip on this ink cartridge retains a variety of cartridge related-information, such as the amount of ink remaining, so that a cartridge may be removed and reinserted freely. However, each time the cartridge is inserted, some ink is consumed because the printer automatically performs a reliability check.

When using the printer

- Do not put your hand inside the printer or touch the ink cartridges during printing.
- Do not block or cover the openings in the printer.
- Do not attempt to service the printer yourself.
- Unplug the printer and refer servicing to qualified service personnel under the following conditions: The power cord or plug is damaged; liquid has entered the printer; the printer has been dropped or the cabinet damaged; the printer does not operate normally or exhibits a distinct change in performance.
- Do not insert objects through the slots in the printer.
- Take care not to spill liquid on the printer.
- Leave the ink cartridges installed. Removing the cartridges can dehydrate the printer head and may prevent the printer from printing.

Information for United Kingdom Users

Use of options

EPSON (UK) Limited shall not be liable against any damages or problems arising from the use of any options or consumable products other than those designated as Original EPSON Products or EPSON Approved Products by EPSON (UK) Limited.

Safety information

Warning: Refer to the rating plate for the voltage and check that the appliance voltage corresponds to the supply voltage.

Important: The wires in the mains lead fitted to this appliance are coloured in accordance with the following code:
Blue — Neutral
Brown — Live

If you have to fit a plug:

- As the colours of the mains lead of this appliance may not match the coloured markings used to identify the terminals in a plug, please observe the following:
- The blue wire must be connected to the terminal in the plug marked with the letter N.
 - The brown wire must be connected to the terminal in the plug marked with the letter L.
 - If the plug is damaged, replace the cord set or consult a qualified electrician.
 - Replace fuses only with fuses of the correct size and rating.

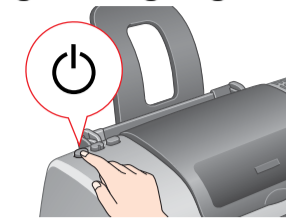
Warnings must be followed carefully to avoid bodily injury.

Cautions must be observed to avoid damage to your equipment.

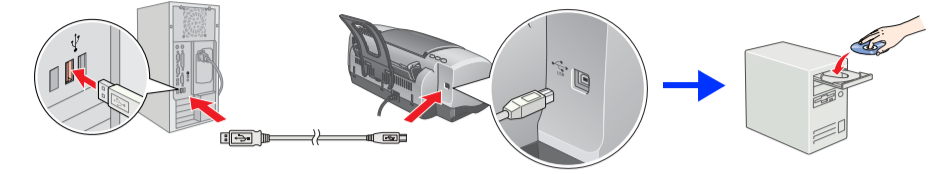
Notes contain important information and useful tips on the operation of your printer.

3 Installing the Printer Software

1. Press the power button to turn off the printer. The green light goes off.



2. Connect the printer and computer with a USB cable, then insert the printer software CD into the CD-ROM drive.



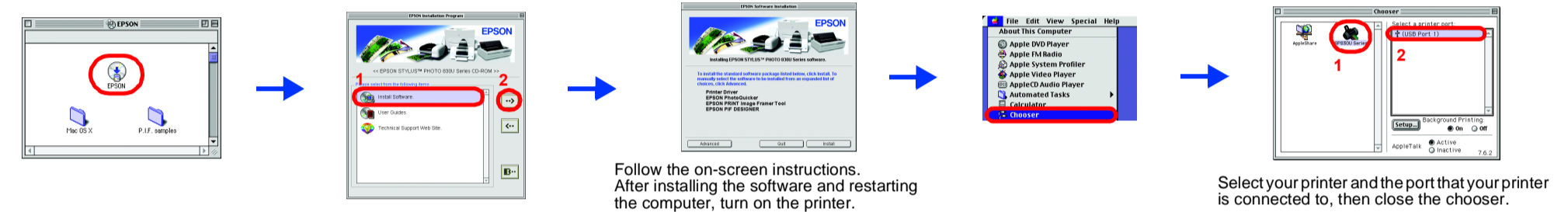
3. Install the printer software.

Except where otherwise instructed, click or double-click the areas circled in red to proceed.

Caution: Macintosh users turn off all virus protection programs before installing the printer software.

Note: For information about installing the Photo Print Software, refer to the Photo Print Software Setup under User Guides on the printer software CD.

For Max OS 8.6 to 9.X



Follow the on-screen instructions. After installing the software and restarting the computer, turn on the printer.

Select your printer and the port that your printer is connected to, then close the chooser.

For Mac OS X

- Open the Mac OS X folder, then double-click the SP830USeries_XXXX.pkg icon. If the Authorization dialog box appears, click the icon (Mac OS X 10.1.x only), enter the Password or phrase, then click **OK**.
- Follow the on-screen instructions to install the software.
- After installing the software and restarting the computer, press the button to turn on the printer.
- Open the Applications folder on your hard drive, then open the Utilities folder and double-click the Print Center icon. Click **Add Printer** in the Printer List dialog box.

Note: When you print, be sure to match the **Format** for setting in the Page Setup dialog box and the **Printer** setting in the Print dialog box. Otherwise, the data may not be printed correctly. See the Reference Guide for more details.

After installation is complete, see **Printing Basics** on the online **Reference Guide** for detailed information about printing from your computer for the first time.

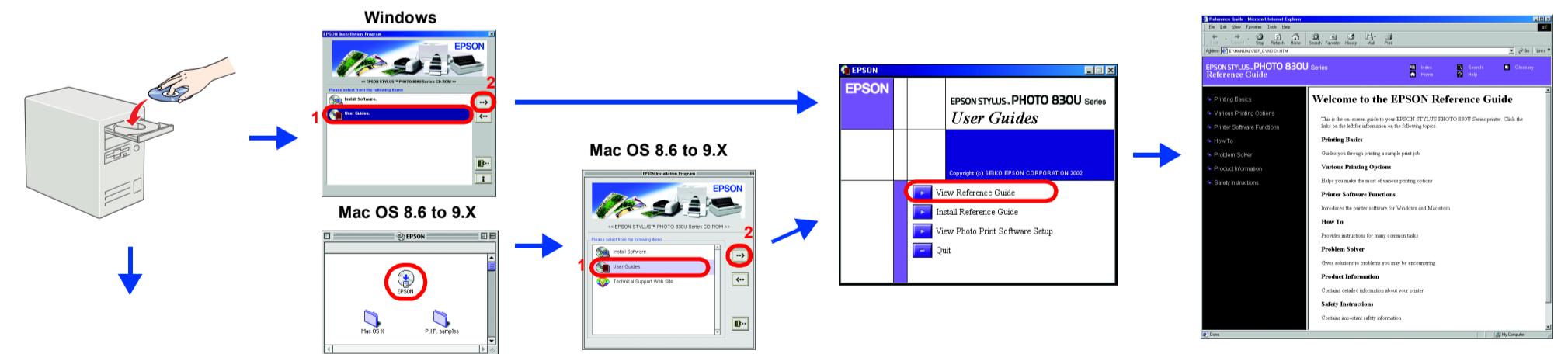
- Select **EPSON USB** from the pop-up menu. Select **SP830U Series(USB)** in the Product list, then select **All** from the Page Setup pop-up menu. Click **Add**.
- Make sure the Printer List contains the printer(margin-type) options as illustrated below. See the Reference Guide on the printer software CD-ROM for more details.



- Close Print Center.

4 Accessing the Reference Guide

The *Reference Guide* provides detailed information about printing from a computer, printer maintenance, problem solving, and safety.



For Mac OS X

- Use the scroll bar to scroll down until the English folder appears, then open it.
- Open the User Guides folder, then open the REF_G folder.
- Double-click the INDEX.HTM icon to open the online *Reference Guide*.

All rights reserved. No part of this publication may be reproduced, stored in a retrieval system, or transmitted in any form or by any means, electronic, mechanical, photocopying, recording, or otherwise, without the prior written permission of SEIKO EPSON CORPORATION. The information contained herein is designed only for use with this EPSON printer. EPSON is not responsible for any use of this information as applied to other printers. Neither SEIKO EPSON CORPORATION nor its affiliates shall be liable to the purchaser of this product or third parties for damages, losses, costs, or expenses incurred by the purchaser or third parties as a result of: accident, misuse, or abuse of this product or unauthorized modifications, repairs, or alterations to this product, or (excluding the U.S.) failure to strictly comply with SEIKO EPSON CORPORATION's operating and maintenance instructions.

SEIKO EPSON CORPORATION shall not be liable for any damages or problems arising from the use of any options or any consumable products other than those designated as Original EPSON Products or EPSON Approved Products by SEIKO EPSON CORPORATION. SEIKO EPSON CORPORATION shall not be held liable for any damage resulting from electromagnetic interference that occurs from the use of any interface cables other than those designated as EPSON Approved Products by SEIKO EPSON CORPORATION. EPSON is a registered trademark and EPSON Stylus is a trademark of SEIKO EPSON CORPORATION.

Microsoft and Windows are registered trademarks of Microsoft Corporation. Apple and Macintosh are registered trademarks of Apple Computer, Inc.

General Notice: Other product names used herein are for identification purposes only and may be trademarks of their respective owners. EPSON disclaims any and all rights in those marks.