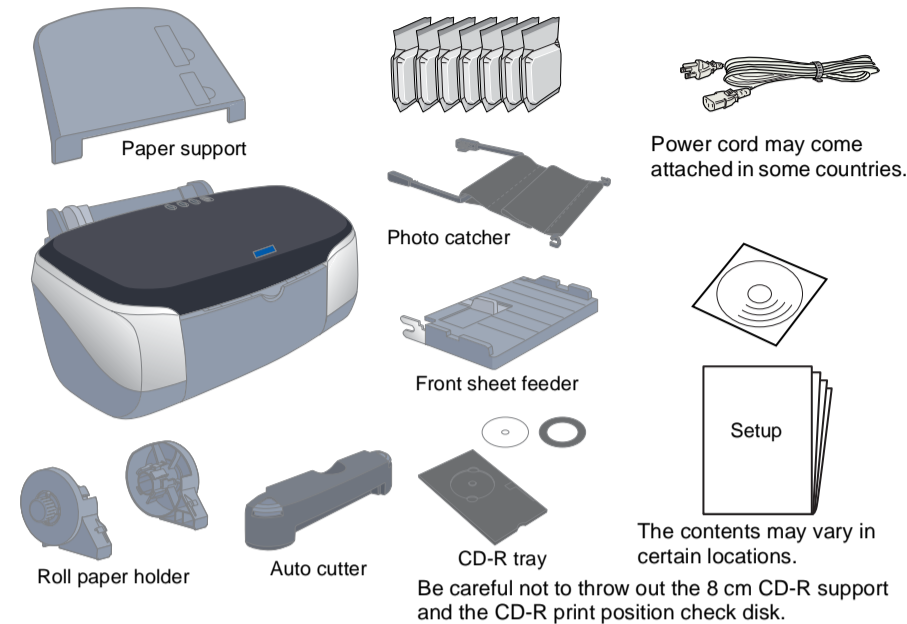
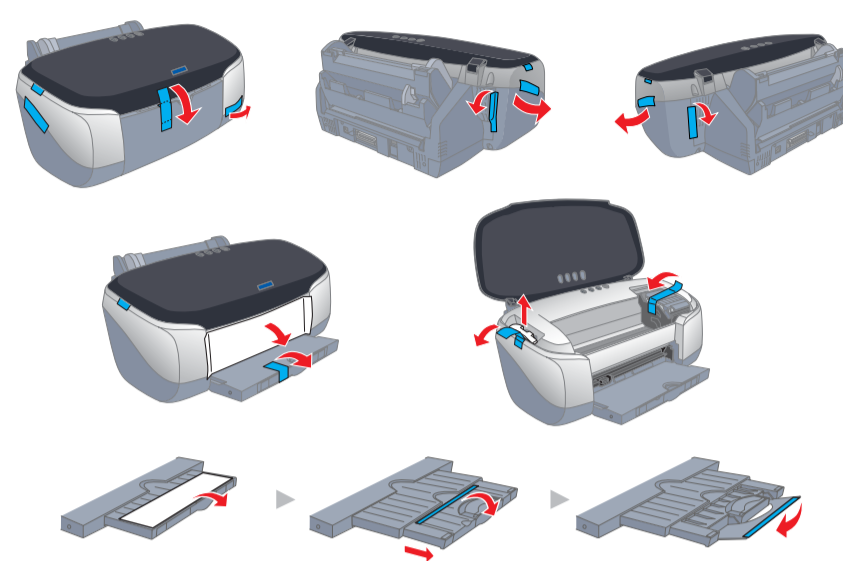


Setting Up the Printer Hardware

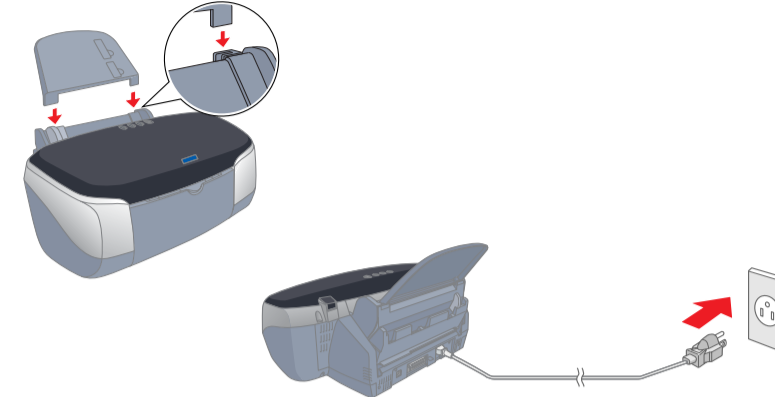
1. Unpack



2. Remove protective materials



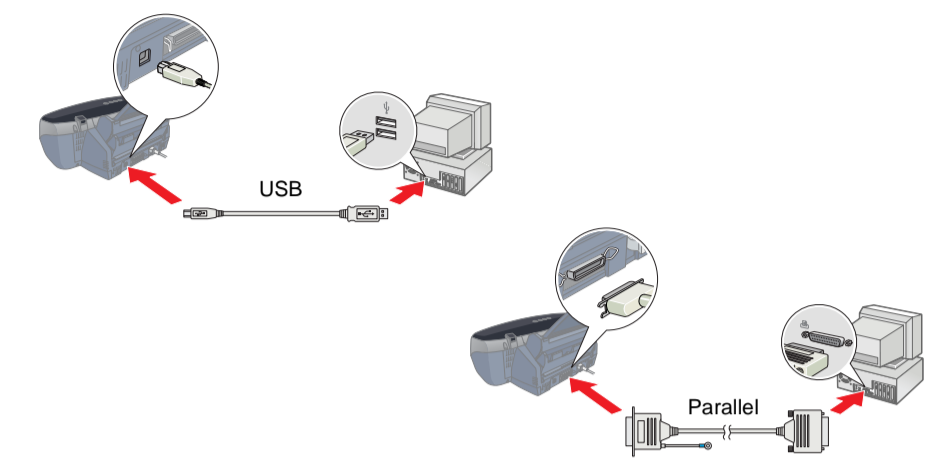
3. Attach the printer parts



Caution: If the printer comes on when you plug in the power cord, turn off the printer by pressing down the power button until the printer lights go out.

4. Connect the printer

Connect the printer cable to the ports on the computer and the printer.



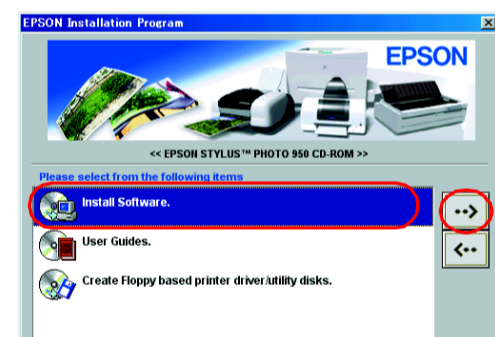
Installing the Printer Software and the Ink Cartridges

For Windows

Note:

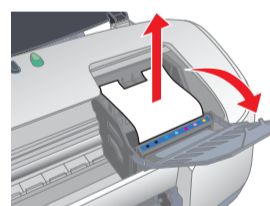
- To install software programs in Windows 2000/NT 4.0, it is necessary to log on as a user with administrative privileges (a user who belongs to the Administrators group).
- To install software programs in Windows XP, it is necessary to log on with a Computer Administrator account. You cannot install software programs if you log on as a Limited account user. After you install Windows XP, the user account is set as a Computer Administrator account.

- Make sure that printer is off, then turn on your computer.
- Insert the printer software CD in the CD-ROM drive. If the Installer dialog box does not appear, double-click **SETUP.EXE** in the CD-ROM.
- Select **Install Software**, and click **Next**.
- Follow the on-screen instructions.



Note:

- Remove the protective material under the cartridge cover before installing ink cartridges, as shown below.
- If the Setup utility does not start, press the power button on the printer and follow the instructions in the Macintosh section of this sheet, beginning from "3. Install the ink cartridges."



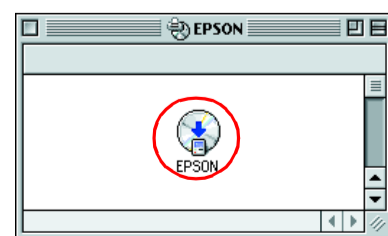
When ink cartridge installation is complete, proceed to "Load paper and check the print head nozzles" on this sheet.

For Macintosh

1. Install the printer software

Caution: Turn off all virus protection programs before you install the printer software.

- Make sure that printer is off, then turn on your Macintosh and insert the printer software CD in the CD-ROM drive.
- Double-click the **EPSON** icon.



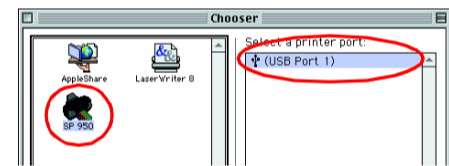
- Select **Install Software**, and click **Next**.
- Follow the on-screen instructions.



2. Select the printer

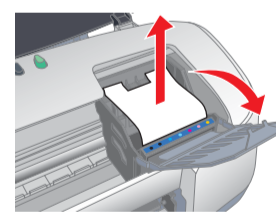
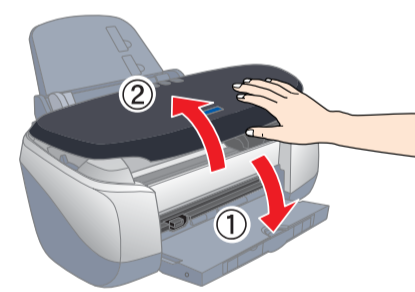
After you have installed the printer software, you need to select your printer.

- Press the power button to turn on the printer. The print head moves to the ink cartridge installation position.
- Choose **Chooser** from the Apple menu. Then, select the icon for your printer and the port that your printer is connected to.
- Close the Chooser.

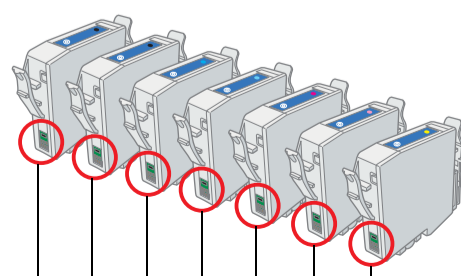


3. Install the ink cartridges

- Lower the output tray, then open the printer cover and the cartridge cover.
- Remove the protective material under the cartridge cover before installing ink cartridges.
- Remove the new ink cartridges from their protective bag.

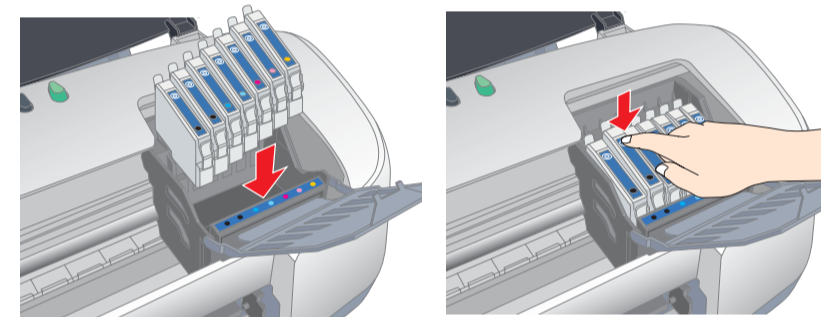


- Caution:**
- Be careful not to break the hook on the side of the cartridge when you remove from the protective bag.
 - Do not remove or tear the label on the cartridge; this can cause leakage.
 - Do not remove the green IC chip from the side of the cartridge. This may damage the printer.
 - Do not touch the green IC chip on the side of the cartridge. Doing so may prevent normal operation and printing.



Do not touch this part.

- Place the ink cartridges vertically into the cartridge holders. Without applying excessive force, push the ink cartridges down until they click into place. To place them vertically, install the ink cartridges from the one end.



Note: Install all ink cartridges. The printer will not work unless all cartridges are installed properly.

- Close the cartridge cover and the printer cover.
- Press the ink button. The printer moves the print head and begins charging the ink delivery system. This process takes about one and half minutes. While charging, the power light flashes and the printer produces a variety of mechanical sounds. This is normal.

Caution:

- Do not turn the power off during the ink charging process.
- Do not load paper until ink charging is complete.

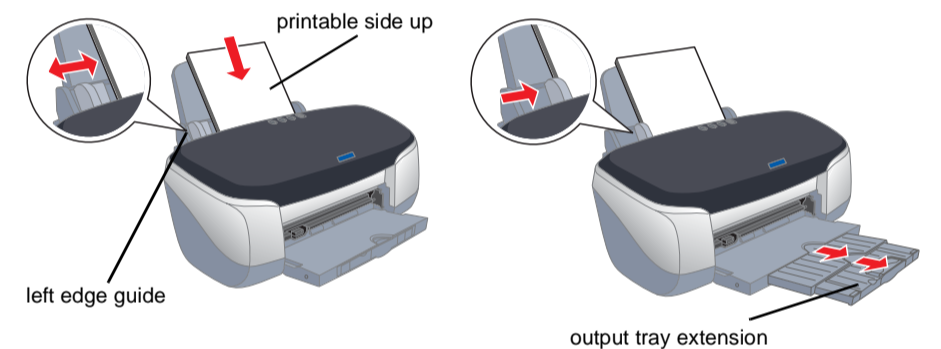
Note: If the ink end error occurs after the print head moves to its home position, the ink cartridge may not be installed properly. Press the ink button again, and reinstall the ink cartridge until it clicks into place.

When the ink charging process is finished, the power light stops flashing and remains on.

The ink cartridges packaged with your printer are for initial setup. In order to maintain high quality printouts, your printer will use large quantities of ink during the setup process. As a result, the ink cartridges used for setup will empty faster than normal.

Load paper and check the print head nozzles

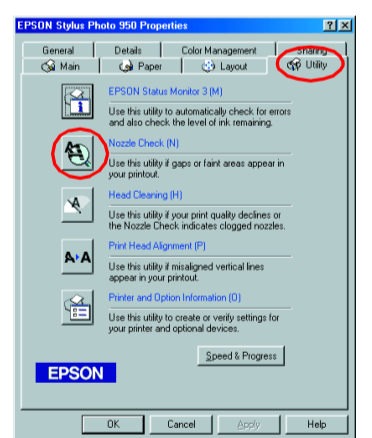
Make sure that the computer is turned on. Load paper into the sheet feeder making sure that the side of the paper that you wish to print onto is facing up and that the right edge of the paper is against the right edge guide. Next, slide the left edge guide so that it is against the left edge of the paper.



Once paper is loaded, follow these steps to check the print head nozzles.

For Windows users

- For Windows Me, 2000, NT 4.0, 98 and 95 users, click the **Start** button, point to **Settings**, and click **Printers**. For Windows XP users, click the **Start** button, then click **Control Panel**, then click **Printers and Other Hardware**, then click **Printers and Faxes**.
- For Windows Me, 98, and 95 users, select your printer, then click **Properties** on the File menu. Then click **Utility** tab. For Windows XP and 2000 users, select your printer, then click **Printing Preferences** on the File menu. Then click **Utility** tab. For Windows NT 4.0 users, select your printer, then click **Document Defaults** on the File menu. Then click **Utility** tab.
- Click the **Nozzle Check** button, and follow the on-screen instructions.
- When you are finished, click **OK** to close the Properties dialog box. Your printer is now set up and ready to use.



For Macintosh users

- Select **Page Setup** in the Finder's **File** menu.
- Click the utility icon.
- Click the **Nozzle Check** button, and follow the on-screen instructions.
- When you are finished, click **OK** to close the utility dialog box. Then click **OK** to close the Page Setup dialog box. Your printer is now set up and ready to use.

