

# EPSON StylusRIP™

All rights reserved. No part of this publication may be reproduced, stored in a retrieval system, or transmitted in any form or by any means, electronic, mechanical, photocopying, recording, or otherwise, without the prior written permission of SEIKO EPSON CORPORATION. The information contained herein is designed only for use with this EPSON printer. EPSON is not responsible for any use of this information as applied to other printers.

Neither SEIKO EPSON CORPORATION nor its affiliates shall be liable to the purchaser of this product or third parties for damages, losses, costs, or expenses incurred by the purchaser or third parties as a result of: accident, misuse, or abuse of this product or unauthorized modifications, repairs, or alterations to this product, or (excluding the U.S.) failure to strictly comply with SEIKO EPSON CORPORATION's operating and maintenance instructions.

SEIKO EPSON CORPORATION shall not be liable for any damages or problems arising from the use of any options or any consumable products other than those designated as Original EPSON Products or EPSON Approved Products by SEIKO EPSON CORPORATION.

Adobe, PageMaker, PostScript, and the PostScript logo are trademarks of Adobe Systems Incorporated which may be registered in certain jurisdictions.

Apple, the Apple logo, LaserWriter, LocalTalk, Performa, and Power Macintosh are trademarks of Apple Computer, Inc.

EPSON is a registered trademark and EPSON Stylus and EPSON StylusRIP are trademarks of SEIKO EPSON CORPORATION.

**General Notice:** *Other product names used herein are for identification purposes only and may be trademarks of their respective owners. EPSON disclaims any and all rights in those marks.*

Copyright © 1999 by SEIKO EPSON CORPORATION, Nagano, Japan.

---

# Contents

## *Introduction*

---

Features . . . . .	5
Network Environment . . . . .	6

## *Chapter 1 Installing the StylusRIP Software*

---

System Requirements . . . . .	9
Setting up StylusRIP for a standalone environment . . . . .	11
What to Check Before Setting Up StylusRIP . . . . .	12
Easy Installation . . . . .	13
Custom Installation . . . . .	15
Color Matching . . . . .	16
PANTONE Color Support . . . . .	16
ColorSync 2.0 Support . . . . .	16

## *Chapter 2 Printing With StylusRIP (Server)*

---

Using the StylusRIP Server . . . . .	17
Exiting the StylusRIP Server . . . . .	19
Checking Print Status . . . . .	19
Using the Preferences Dialog Box . . . . .	21
Selecting and Setting up the StylusRIP Server . . . . .	23
Starting the StylusRIP Server automatically . . . . .	25
Using the Print Options Window . . . . .	26
Printing From Your Macintosh to the StylusRIP Server . . . . .	28
Cancelling a Print Job . . . . .	28

## *Chapter 3 Troubleshooting*

---

Troubleshooting Hints . . . . .	29
An Out of Memory, Memory Low, or VM error message	

appears.....	29
Font not found: using Courier; Find font errors.....	30
Images on printed pages are clipped.....	30
Printer out of synch - outputting repeated pages of extraneous code .....	30
Printer cannot be opened or printer not found .....	31
Job in pre-print queue not printed .....	31
Job prints in black and white or one or more colors are missing.....	31
Client times out while sending a job to StylusRIP.....	32
A line is printed at the bottom of the printed page .....	32
Printing is not possible in a standalone environment....	32
Not possible to print clearly with Adobe Photoshop ....	33
Color matching differs during offset printing with Adobe Photoshop 4.0 or later versions despite the fact that the product's Press simulation function is in use.....	33
Not possible to print clearly with Adobe Illustrator .....	33
Color matching differs during offset printing with Adobe Illustrator 7.0 or later versions despite the fact that the product's Press simulation function is in use.....	34
A certain proportion of the gradation is lost when printing with Adobe Illustrator 5.5 or later versions ...	34
Not possible to print with PageMaker in a standalone environment .....	34
Not possible to print clearly with PageMaker .....	35
Color matching differs during offset printing with Adobe PageMaker 6.5 or later versions despite the fact that the product's Press simulation function is in use.....	35
Not possible to print with QuarkXPress 3.11/3.3 .....	35
Not possible to print clearly with QuarkXPress.....	36

## *Appendix A StylusRIP File List*

---

## *Glossary*

---



---

## Introduction

EPSON® StylusRIP is software that turns your EPSON Stylus™ printer into a PostScript® printer. StylusRIP processes raster images for your Apple® Macintosh®, reads and interprets Adobe PostScript 3, and allows your EPSON Stylus printer to print color raster images.

Adobe PostScript is the standard for high quality graphic output. All elements of a document, including text, graphics, and images are processed, stored, and reproduced using the PostScript code. When you print from an application, such as PageMaker®, StylusRIP processes the PostScript code and sends the processed image to the printer.

---

## Features

EPSON StylusRIP includes the following features:

- ❑ **Enables PostScript printing**  
StylusRIP is software that enables an EPSON Stylus printer connected to Macintosh to perform as a PostScript printer.
- ❑ **Power Macintosh compatibility**  
StylusRIP is designed for the Power Macintosh or Power PC owner.
- ❑ **Print server capability**  
StylusRIP is available for use in either a standalone or network environment. If you set up your EPSON Stylus printer as a print server, you can print from other Macintosh computers on the network to the print server on a host Macintosh. Your print data will then be sent to the printer in the order it was received.

- ❑ Easy to operate in a network or standalone environment  
StylusRIP is as easy to use over a network as it is to use in a standalone (one Macintosh and one printer) environment. Once you decide how you want to use StylusRIP and set it up, you never have to think about its environment again.

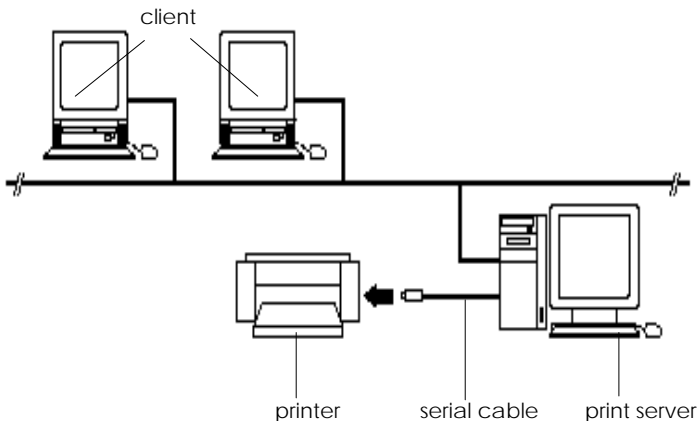
---

## Network Environment

StylusRIP can be used on any AppleTalk, EtherTalk, or LocalTalk network with two or more Macintosh computers.

There are two ways to use StylusRIP as a print server on a network, as shown by the following illustrations. Choose the environment that best suits your needs.

In the illustration below, the Macintosh that is directly connected to the printer and contains the StylusRIP software is called the “print server.” The other Macintosh computers are called clients. The print server in this case is a Macintosh that has the power to receive and send a lot of data very quickly.

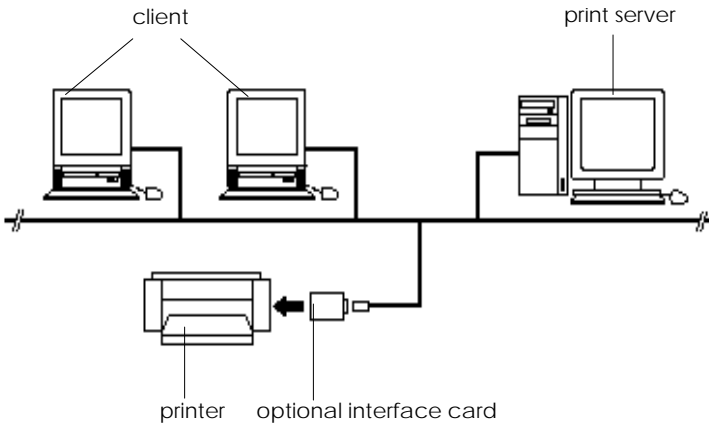


**Note:**

- ❑ *The most efficient way to use StylusRIP as a print server is to install the software on a Power Macintosh that has strong data management capabilities and devote it to the management of the print data that is sent over the network. In this way, you can print even faster than if your printer and StylusRIP enabled Macintosh were connected directly in a standalone environment.*
- ❑ *If you use a LocalTalk network environment, be sure to use a serial cable to connect the printer with the modem port of the print server.*

When printing from a client Macintosh, the print job is first sent to the print sever. Then the Print Server puts that print job in a print queue and sends the print job to the printer in the order received.

EPSON recommends you to connect the printer and print server, by serial cable, as shown above.



In a general network environment, the printer is shared by multiple Macintosh computers over the network. For this situation, you may have to install an optional interface card in the printer, set it up for use on an EtherTalk network, and set up the card or another device as the print server. The illustration above shows an example of a general network environment.

In the above network environment, you need to install StylusRIP on all PostScript enabled Macintosh computers. One more factor to consider when choosing what network architecture you want to use is the amount of traffic generated on the network. In the first diagram, print data is only sent once over the network, while in the second diagram it will be sent twice; once to the print server and once to the printer. You may notice delays on the network if detailed image data is sent often.



# Installing the StylusRIP Software

Before you install the StylusRIP software in your Macintosh, make sure your Macintosh meets the system requirements listed below.

---

### System Requirements

Your Macintosh needs to meet the following configuration requirements to use StylusRIP, whether in a standalone or network environment:

- ❑ Power Macintosh or iMac series, depending on how you use the StylusRIP software.
- ❑ At least 15 MB of RAM. 20 MB of RAM is recommended. Also, any memory requirements for optional software must be added to this total.
- ❑ At least 80 MB of available disk space. As the number of files in the jobs folder increases, the amount of required disk space also increases.
- ❑ Macintosh Operating System version 7.6.1 or later
- ❑ CPU: PowerPC
- ❑ CD-ROM drive is required.

**Note:**

- ❑ *Performa series Macintosh computers that have built-in CD-ROM drives cannot be used as a print server.*
- ❑ *If you do not use the printer or printer's interface card as the print server, EPSON recommends you directly connect the printer and host computer by serial interface. Use of the serial interface connection decreases the amount of traffic on your network.*
- ❑ *For details about the network environment, refer to "Network Environment" on page 6.*

A StylusRIP client requires the following minimum configuration:

- ❑ Centris, Quadra, PowerBook, Power Macintosh, Performa, or iMac series Macintosh.
- ❑ Macintosh Operating System version 7.6.1 or later
- ❑ AppleTalk network connection with the StylusRIP Server
- ❑ 8MB of RAM to install the StylusRIP client software

## ***Setting up StylusRIP for a standalone environment***

To print PostScript documents in a standalone environment, you need to set AppleTalk to Active in Chooser and connect the printer to the modem port (the printer port is not suitable for StylusRIP). However, if you cannot use the modem port, follow the steps below:

1. Insert the StylusRIP CD-ROM into the CD-ROM drive.
2. From the CD-ROM, copy the Remote Only file to the Extensions folder in the System folder.
3. Open the Control Panels on the Apple menu.
4. Click the Network icon and select Remote Only. If your system uses the Open Transport protocol (there is no Network icon), open the AppleTalk folder and select Remote Only in the Connect via list box.
5. Restart your Macintosh.
6. Select Active for the AppleTalk setting in the Chooser. You can now print PostScript documents with the printer connected to the printer port.

---

## ***What to Check Before Setting Up StylusRIP***

Before setting up StylusRIP, make sure your system meets the minimum hardware and software requirements listed above, and install any necessary fonts and printer drivers in your Macintosh. See your font installation software and printer user's guides for more details.

Also, be sure to note the following when setting up StylusRIP:

- ❑ Turn off all virus protection. For instructions on how to do this, see your virus protection or Macintosh documentation.
- ❑ Close all other active applications.
- ❑ Carefully choose which printer to install the software in; you can only install the software in one printer.
- ❑ Be sure to print a self test for the printer in question to make sure the printer is operating properly. Also, make sure the printer and Macintosh are connected correctly.
- ❑ Determine what kind of installation you need, standard or custom. To install StylusRIP on a standalone or print server Macintosh, follow the standard installation instructions below. To install StylusRIP on a client Macintosh or if you don't want to print from your print server, follow the custom installation instructions starting on page 15.

---

## Easy Installation

Follow these steps:

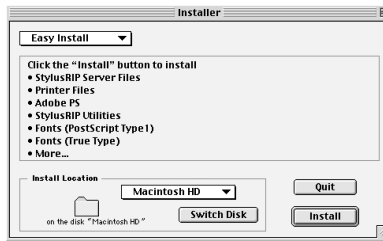
1. Turn off all virus protection programs before you install the software. To do this, see your virus protection or Macintosh documentation.
2. Insert the CD-ROM into the appropriate drive. The following icons appear on your screen.



3. Double-click the Installer icon. The following screen appears:



4. Click Continue. The following dialog box appears:

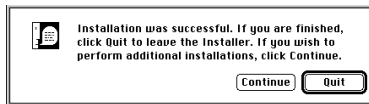


5. Click Install for the default installation.

**Note:**

*The installer saves the StylusRIP files to your hard disk. If you want to install the files somewhere other than on your hard disk, click the Select Folder button and choose the destination.*

The program installs all files necessary to run StylusRIP. When installation is complete, the following dialog box appears:



6. Click Quit to complete the StylusRIP software installation.

---

## ***Custom Installation***

For a StylusRIP client (a typical workstation connected to the network) or minimum StylusRIP print server installation, follow the steps below. The minimum StylusRIP print server setup includes only print server software, which means you will not be able to print PostScript documents directly from the host machine that contains your print server.

1. Turn off all virus protection programs before you install the software. To do this, see your virus protection or Macintosh documentation.
2. Insert the CD-ROM into the appropriate drive.
3. Double-click the Installer icon.
4. Follow the on-screen instructions.
5. Choose Custom Install.
6. Select the item(s) you want to install.
7. Click Install to begin installation.

***Note:***

*The installer saves the StylusRIP files to your hard disk. If you want to install the files somewhere other than on your hard disk, click the Select Folder button and choose the destination.*

8. Click Quit to complete the StylusRIP software installation.

---

## ***Color Matching***

During the StylusRIP installation, Pantone color profiles for EPSON Stylus printers and the ColorSync 2.0 color matching system are installed in the StylusRIP Utilities folder.

## ***PANTONE Color Support***

PANTONE professional color palette files for the EPSON Stylus series printer are included with StylusRIP. These files can be read directly into all PANTONE-licensed applications so you can have printer calibrated versions of all Pantone colors. The colors are calibrated to use StylusRIP's stochastic screens and EPSON's coated and high-quality glossy paper.

For installation instructions, refer to the README file, Pantone documentation, and Pantone manual in the Pantone folder.

## ***ColorSync 2.0 Support***

For applications that support ColorSync 2.0, use the ICC (International Color Consortium) profiles that are included in the StylusRIP software.



# Printing With StylusRIP (Server)

StylusRIP Server is software that can play the role of print server. When you send a print job from your application program, the StylusRIP Server receives job and puts it in a print queue in the order it was received. When your print job reaches the top of the queue, the StylusRIP Server sends it to the printer to be printed. StylusRIP Server, just like any other application, must be opened before you can use it.

---

## Using the StylusRIP Server

When you open the StylusRIP Server for the first time, set up the StylusRIP software package.

1. Turn on the printer. Make sure the printer's Power light (or Operate light depending on the printer) is on before you open StylusRIP Server.
2. Double-click the hard drive icon, and double-click the StylusRIP Server icon in the StylusRIP folder.

**Note:**

*Make sure AppleTalk is active in the Chooser. If it is not, StylusRIP is not available.*

3. Select the port or printer name. Select the port (printer, modem or USB) if you connect the printer by serial cable. Select the printer name if you connect the printer to the AppleTalk network via a LocalTalk or EtherTalk interface.

**Note:**

*If you have multiple AppleTalk zones, select the zone where the printer is located and then select the printer name.*

4. Click OK. If the printer's power is on and the printer is ready to print, StylusRIP Server selects the printer and prepares it for printing. When the License key dialog box appears, type your key in the box.

### ***Using the Printer Connection dialog box***

The first time you activate StylusRIP Server after installation (or if there is no response from the printer), choose Printer Connection on the PostScript menu of StylusRIP Server and restart StylusRIP to open the Printer Connection dialog box.

Select your StylusRIP printer in the dialog box. After making sure the printer is turned on and ready to print, choose the port that the printer is connected to and click OK. If you print over an AppleTalk network, select the printer name after selecting the AppleTalk zone.

#### ***Note:***

*If you do not use the printer or the printer's interface card as the print server, EPSON recommends you use a serial cable to directly connect the printer and host computer. Use of the serial interface connection decreases the amount of traffic on your network. For details, refer to "Network Environment" on page 6.*

---

## Exiting the StylusRIP Server

Close the StylusRIP Server by choosing Exit on the File menu of the StylusRIP Server. Keep in mind, you need to open StylusRIP every time before printing.

### **Note:**

*Unless your Macintosh is low on memory, you do not need to exit StylusRIP after every print job. You can leave it active until you turn off your Macintosh.*

---

## Checking Print Status

If the StylusRIP Server is activated, the Server Status window automatically appears and shows the print status when you send a print job. This window displays the following information:

### **Conection:**

Displays the name of the application program used to create the PostScript file.

### **Printer:**

Displays the raster output printer name that is selected in the StylusRIP Server.

### **Page:**

Displays the number of the page that is being ripped and the total number of pages.

### **Quality:**

Displays the print resolution and print direction.

### **Data Size:**

Displays the size of the PostScript file that is being ripped. The value increases as more of the file is received and ripped. Once the entire file has been received and ripped, the raster output is sent to the printer, as shown by the “Progress” bar.

**Status:**

Displays the current status of StylusRIP.

**Message:**

Displays specific printer information such as “Paper out” or “Ink end.” All recoverable printer errors are displayed here. When an error occurs, StylusRIP holds the print job until the error is fixed and then automatically releases the job for printing. PostScript error messages are also shown here.

**Progress:**

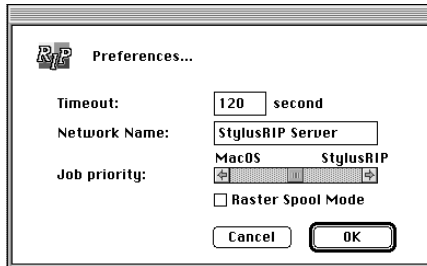
Displays the progress of the raster output that is sent to the printer using a status bar. The color of this bar changes to gray when data is first sent to the printer. Printing begins soon after this. The bar progresses from left to right and reaches the right edge when the print job has been completely sent.

To hide the Server Status window, choose **Hide Window on the PostScript menu**. To display the window again, choose **Show Window**.

---

## Using the Preferences Dialog Box

You can make special preference settings by choosing Preferences on the File menu. The Preferences settings are for network environments only.



### **Timeout:**

The StylusRIP Server disconnects from a client Macintosh if the StylusRIP gets no response from the client for the specified amount of time. The default timeout setting is 120 seconds.

To make the Timeout setting, click in the Timeout box and type in a new value.

### **Network Name:**

This is the same StylusRIP Server name that you select in the Chooser. The default name is StylusRIP Server.

To change the name of the network, click in the Network Name box and type a new, unique name.

### **Job Priority:**

This setting controls whether priority is given to your application or the StylusRIP Server. The default setting is in the center, giving equal priority to both pieces of software.

To improve the StylusRIP Server's performance, move the slide bar to the right. To improve your application's performance, move the slide bar to the left.

**Note:**

*The Timeout, Network Name, and Job Priority settings will go into effect soon after you click the OK button.*

**Raster Spool Mode:**

This setting turns on or off raster image spooling. The default setting is off. It is on when a check appears in the check box. Click the check box to turn it on or off.

Turning on raster image spooling is recommended to get the following benefits:

(1). Faster ripping of multiple copies

When 2 or more copies of one PostScript print job are sent to the printer, StylusRIP only rips the job once. This saves time and frees up hardware resources.

(2). Faster ripping

When this setting is on, StylusRIP spools raster images to the hard drive faster than it can output the print data to the printer. Because of this, StylusRIP is ready to receive the next print job much quicker.

The drawback with spooling raster images is that spooling requires a lot of free space on your hard disk. The amount of free disk space that your print job requires depends on the size of, resolution of, and amount of detail in the print job. If you do not have enough space on your hard drive, StylusRIP stops spooling when the hard disk becomes full and restarts spooling as soon as the previous print job is finished. This can cause slower performance than if Raster Spool Mode is turned off.

**Note:**

*If you turn on or off Raster Spool Mode, you must quit and restart StylusRIP before the new setting takes effect.*

---

## Selecting and Setting up the StylusRIP Server

You need to select and set up the StylusRIP Server before printing, as described in this section.

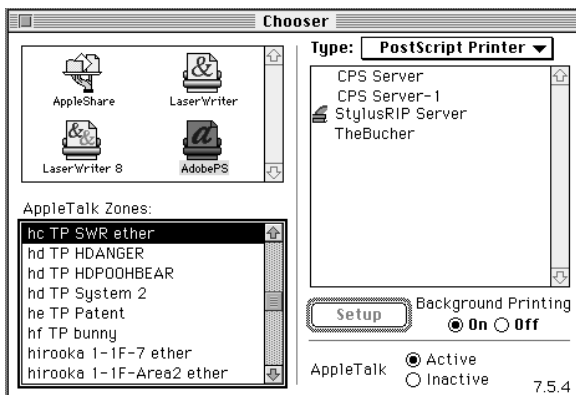
### Note:

*If you consistently use the StylusRIP Server, see “Starting the StylusRIP Server automatically” on page 25.*

1. Double-click the StylusRIP Server icon in the StylusRIP folder.

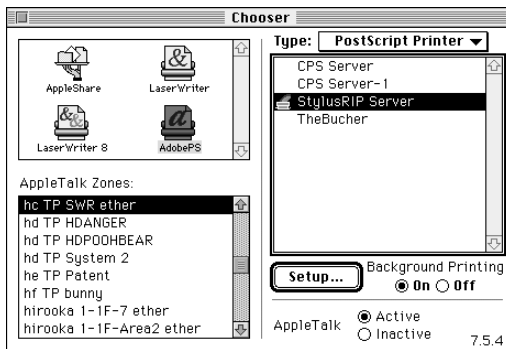
### Note:

- ❑ *Although you need to activate the StylusRIP Server before printing, you only need not to select a printer (printer driver) if you switch to a different printer.*
  - ❑ *If you cannot proceed with the steps below, either the StylusRIP Server is not activated or an interface cable is not connected. Make sure the StylusRIP Server is active and all interface cables are properly connected.*
2. Open the Chooser; then click the AdobePS icon in the left column.



**Note:**

- ❑ *If you print over an AppleTalk network, select the printer name after selecting the zone where the printer is connected.*
  - ❑ *You can change the server name. Choose Preferences in the File menu of the StylusRIP Server, then input the name you want to name.*
3. Select the StylusRIP Server (keep in mind that the name may have been changed) in the right column
  4. Select the On radio button under Background Printing.



**Note:**

*If the Off radio button is selected, control of your application does not return to you until the entire print job has been sent to the printer or print server. Also, some applications can only print with Background Printing turned on.*

5. Click the Active radio button to make the AppleTalk setting.

**Note:**

*You need to click the AppleTalk Active radio button whether the printer is connected to the network or not.*

6. Click Setup. The correct PPD file is automatically selected.



**Note:**

*The PPD file is automatically installed in the Printer Description file of the Extensions folder in the System Folder.*

7. Close the Chooser by clicking the close box at the top left corner.

**Note:**

*Some applications display a proprietary dialog box at this point. If one appears, see your application manual for instructions.*

### ***Starting the StylusRIP Server automatically***

Follow the steps below if you often use the StylusRIP Server. This procedure causes the StylusRIP Server to start automatically every time you turn on your Macintosh.

1. Double-click the EPSON StylusRIP folder in the hard drive.
2. Choose StylusRIP Server icon.
3. On the File menu, choose Make Alias to make the StylusRIP Server alias icon.
4. Move the alias into the Startup Items folder in the System Folder.

---

## Using the Print Options Window

You can make the following Print Options settings in the Print window. To open this dialog box, press the “⌘” and “P” keys on the keyboard simultaneously, and then click Options in the dialog box that appears.

### *Press Simulation*

The Press Simulation function is useful when you print CMYK color data. You can easily make colors match CMYK color with the standard 3 offset colors (SWOP, Euro (Eurostandard), and DIC), and print.

Almost all PostScript compliance applications, suchs PageMaker, QuarkXPress, Illustrator, and PhotoShop (CMYK mode), use CMYK color designation. You can easily simulate offset color printing by using the Press Simulation function.

Select the profile of the target offset printing machine that you want to use. Your choices are SWOP, Euro (Eurostandard), DIC, or OFF. SWOP is the profile to simulate SWOP publications. Euro (Eurostandard) is the profile to simulate European publications. DIC is the profile to simulate standard DIC color publication. The default setting is SWOP. When using this settings, make sure of the following:

- ❑ Use only 360 dpi Ink Jet Paper, Photo Quality Ink Jet Paper, Photo Quality Glossy Paper, or Photo Quality Glossy Film (see your printer manual for which paper is available for your printer). You can not use Press Simulation with other paper types.
- ❑ Turn the Color settings to Color/Grayscale in the Print window.

- ❑ Some applications, such as PageMaker 6.5, Illustrator 7.0, or QuarkXPress 3.3 with HELIOS ColorSync2 XTension, can be used for color management functions. When using the application's color management function, make sure to select OFF for Press Simulation.
- ❑ The color of printouts look different depending on lighting. Press Simulation assumes you are looking at the printouts under correlated color temperature 5,000K°.
- ❑ Because each offset machine has its unique properties, the simulation results may vary.

### *Quality*

Select the Media Type and Resolution combinations.

### *Ink*

Select color or black ink only.

### *Paper Options*

Select Paper Options for a model using roll paper. The designated paper type is used as the default setting in the PPD file when the printer default settings are made. Select Roll Paper to use roll paper, or Cut Sheet to use cut sheets of paper.

- ❑ Cut Paper is the default setting.
- ❑ To use roll paper, set the custom paper size in the Paper Setting dialog box. To achieve a printed length longer than the maximum paper length of 1117.6 mm (44 inches), multiple pages must be printed with no margins between. For portrait printing, set the top and bottom margins to zero. For landscape printing, set the left and right margins to zero.
- ❑ When using roll paper, refer to the printer instruction manual for details on how to use and load the paper to ensure that the paper is loaded correctly.

- ❑ Use the Cut Sheet setting to feed continuous sheets with a tractor unit.

---

## *Printing From Your Macintosh to the StylusRIP Server*

Follow these steps to print from a client Macintosh to the StylusRIP Server:

1. Make sure the StylusRIP Monitor and printer are open on your server.
2. From your client Macintosh, select AdobePS in the Chooser.
3. On the right, next to Type, select PostScript Printer and then exit the Chooser.
4. In your application's print dialog box, select Printer as the destination when printing.

---

## *Cancelling a Print Job*

To cancel the current print job, follow one of the ways described below:

- ❑ If the print job that you want to cancel is now spooling, press the “⌘” and “.” keys on the keyboard simultaneously.
- ❑ If Raster Spool Mode is turned on in the Preferences dialog box, the StylusRIP MONITOR appears on screen. If the print job that you want to cancel is already spooled and is waiting to be printed, click the Job Cancel button in the center of the StylusRIP MONITOR.

## Chapter 3

---

# Troubleshooting

This chapter lists possible solutions for common problems. Please refer to the troubleshooting hints before calling technical support.

When calling for technical assistance, be ready to identify your system and its configuration, the serial number of your copy of StylusRIP, and a description of the problems you are encountering.

---

## Troubleshooting Hints

This section includes the most common problems StylusRIP users may encounter. These problems may include several possible solutions.

### *An Out of Memory, Memory Low, or VM error message appears*

Install additional memory or enhance StylusRIP's performance, especially on complex jobs, by using available memory more efficiently as described below.

- ❑ Turn on Virtual Memory. From the Apple menu, select Control Panel, select Memory Control Panel, and then click the On button in the Virtual Memory panel.
- ❑ Allocate more memory to StylusRIP. Quit StylusRIP, then select the StylusRIP icon on the desktop. From the File menu, select Get Info. Increase the number in the Preferred size box relative to the amount of available memory you have. Keep in mind that the system software requires available memory in addition to other applications you may want to have active while StylusRIP is running.

### ***Font not found: using Courier; Find font errors***

- ❑ Are you allowing Font Substitution in your page setups? If so, turn Font Substitution off.
- ❑ Make sure you have PostScript-compatible printer fonts rather than just screen fonts. If you do not have PostScript-compatible printer fonts loaded on your system, you cannot print them.
- ❑ If you have renamed or moved the StylusRIP folder after the original installation, you need to reinstall the StylusRIP on the hard drive.

If the problem still persists, delete the tmp folder and the StylusRIP Preferences in the StylusRIP folder. A new preference file is automatically created when you restart StylusRIP.

### ***Images on printed pages are clipped***

- ❑ Verify the printable area of your EPSON Stylus printer and the type of paper you are using in the printer user's guide. You may need to increase your margins or decrease the size of your image.
- ❑ Make sure you selected the proper PPD in the Chooser Setup.

### ***Printer out of synch - outputting repeated pages of extraneous code***

- ❑ If clicking Cancel Job has no effect, turn off your printer to avoid wasting paper.
- ❑ Force quit the StylusRIP application. Do this by holding down the option and command keys and then pressing the escape key to force quit. You must then reboot your Macintosh to reestablish communication with the printer.

### ***Printer cannot be opened or printer not found***

- ❑ Make sure the printer is powered on.
- ❑ Make sure the printer is connected properly to the StylusRIP Server. Defective serial cables are a common problem. Try using Belkin serial cable F2V024-10-S.
- ❑ If you are using EPSON's optional LocalTalk or EtherTalk interface card, make sure you named the printer correctly in the Printer Setup dialog box.

### ***Job in pre-print queue not printed***

- ❑ Make sure the printer is ready and the Pause light is off.
- ❑ Make sure the printer is connected properly to the Macintosh.

### ***Job prints in black and white or one or more colors are missing***

- ❑ Make sure you specified color output in your application's print dialog. If you selected black ink only, color images will print in grayscale (varying shades of gray) instead of color.
- ❑ Check the color ink cartridge to see if it is empty or the print head is dirty. See your printer documentation for details on how to do this.
- ❑ Make sure you selected the correct PPD.

## *Client times out while sending a job to StylusRIP*

- ❑ Did you switch to another application on the StylusRIP Server? If you did, the other application may not give StylusRIP enough time to maintain its connection with the client. Switch back to StylusRIP and try printing again.
- ❑ Is StylusRIP running on a slower Macintosh computer, and are there several clients trying to print to StylusRIP simultaneously? Your server may not be fast enough to support a large number of simultaneous transfers. Wait for some of the clients to complete sending their jobs to StylusRIP, then try again.

## *A line is printed at the bottom of the printed page*

- ❑ Depending on the printer, it is possible to print to within 3 mm of the bottom of the sheet, but the range where printing results are guaranteed is to within 14 mm of the bottom of the sheet. For that reason, if you are printing closer than 14 mm from the bottom of the sheet, irregular color or other problems might occur.

## *Printing is not possible in a standalone environment*

- ❑ Background Printing is turned off (no spool file) in the Adobe PS printer driver. Turn on Background Printing in the Adobe PS printer driver. This setting is necessary in order to transmit data normally between the StylusRIP and the application, when the application must output to the printer in a standalone environment.  
When using StylusRIP, we recommend turning on Background Printing for all formats. This will improve print speed.



## ***Not possible to print clearly with Adobe Photoshop***

- ❑ PostScript Color Matching or ColorSync Color Matching has been specified. Open the Print Option dialog box on the Print dialog box when printing with this product's Press Simulation function, and set Color to Color/Gray Scale. Or, ensure that the color matching system for the printer that is to perform the simulation is correctly selected with the Press Simulation.

## ***Color matching differs during offset printing with Adobe Photoshop 4.0 or later versions despite the fact that the product's Press simulation function is in use***

- ❑ The Photoshop color management function is in use. Open the Print Option dialog box on the Print dialog box when the color management function is used with application software and set the Press Simulation to Off. Or, set the Color field to Color/Gray Scale.
- ❑ The colors of the printed product seem to differ because of different styles of lighting. The printing simulation function presumes that printed products will be viewed under lighting with a correlated color temperature of 5,000 K°. It is therefore recommended that the printout be viewed under standard lighting equivalent to 5,000 K°.

## ***Not possible to print clearly with Adobe Illustrator***

- ❑ PostScript Color Matching or ColorSync Color Matching has been specified. Open the Print Option dialog box on the Print dialog box when printing with the use of this product's offset printing simulation function, and set Color to Color/Gray Scale. Or, ensure that the color Matching system for the printer that is to perform the simulation is correctly selected with the Press Simulation.

***Color matching differs during offset printing with Adobe Illustrator 7.0 or later versions despite the fact that the product's Press simulation function is in use***

- ❑ The Illustrator color management function is in use. Open the Print Option dialog box on the Print dialog box when the color management function is used with application software and set the Press Simulation to Off. Or, set the Color field to Color/Gray Scale.
- ❑ The colors of the printed product seem to differ because of different styles of lighting. The printing simulation function presumes that printed products will be viewed under lighting with a correlated color temperature of 5,000 K°. It is therefore recommended that the printout be viewed under standard lighting equivalent to 5,000 K°.

***A certain proportion of the gradation is lost when printing with Adobe Illustrator 5.5 or later versions***

- ❑ This phenomena is caused by limitations in the Illustrator specifications.  
Check (add an 'X') to the Compatible Gradient Printing in the Illustrator File Document Setup box.

***Not possible to print with PageMaker in a standalone environment***

- ❑ The Background Printing is set to Off. Ensure that the Background Printing is always set to On when selecting the StylusRIP Server with the Chooser. This setting is required to ensure normal communications between StylusRIP and PageMaker when printing from PageMaker in a standalone environment. It is recommended that the Background Printing be always set to On.

### ***Not possible to print clearly with PageMaker***

- ❑ PostScript Color Matching or ColorSync Color Matching has been specified. Open the Print Option dialog box on the Print dialog box when printing with this product's offset Press simulation function, and set Color to Color/Gray Scale. Or, ensure that the color Matching system for the printer that is to perform the simulation is correctly selected with the Press Simulation.

### ***Color matching differs during offset printing with Adobe PageMaker 6.5 or later versions despite the fact that the product's Press simulation function is in use***

- ❑ The PageMaker color management function is in use. Open the Print Option dialog box on the Print dialog box when the color management function is used with application software and set the Press Simulation to Off. Or, set the Color field to Color/Gray Scale.
- ❑ The colors of the printed product seem to differ because of different styles of lighting. The printing simulation function presumes that printed products will be viewed under lighting with a correlated color temperature of 5,000 K°. It is therefore recommended that the printout be viewed under standard lighting equivalent to 5,000 K°.

### ***Not possible to print with QuarkXPress 3.11/3.3***

- ❑ The Background Printing is set to Off. Ensure that the Background Printing is always set to On with the Chooser. There are cases where printing is not possible if the Background Printing is set to Off.

## *Not possible to print clearly with QuarkXPress*

- PostScript Color Matching or ColorSync Color Matching has been specified. Open the Print Option dialog box on the Print dialog box when printing with this product's offset printing simulation function, and set Color to Color/Gray Scale. Or, ensure that the color Matching system for the printer that is to perform the simulation is correctly selected with the Press Simulation.

### **StylusRIP File List**

The following list includes all the files provided in the StylusRIP software package.

**README file:** Contains some important notices and the latest information on StylusRIP. Read this file, before setting up.

**Installer:**

There are two kinds of installer for StylusRIP, and both are included on the CD-ROM. To install the StylusRIP Server, use the “Installer” that appears first when set the CD-ROM in the CD-ROM drive. (When setting up the StylusRIP in a client Macintosh on a network environment, use the installer which is contained in the “Client Installer” folder.)

**Client Installer:**

Sets up the StylusRIP in a client Macintosh in a network environment.

When setting up StylusRIP, the following files and folders are installed on your hard drive.

**StylusRIP Server:**

This is the main application of StylusRIP. Make sure to open this application before choosing the printer driver in the Chooser under the Apple menu. This application is installed in the StylusRIP folder of the host computer. This file is not installed in a client Macintosh.

**AdobePS:**

This is the printer driver that controls the PostScript printer. Select this printer driver and select StylusRIP Server in the Chooser. This is installed in the Extension folder of the System folder.

**Note:**

*You can use the AdobePS printer driver to print to other PostScript printers, and you should use the AdobePS when printing over the network, even if you are using an optional LocalTalk or EtherTalk interface. However, when using QuickDraw-based application programs, such as SuperPaint, or using TrueType fonts, you should use the original printer driver that came with the printer rather than StylusRIP. Also, use the original printer driver when you are sending regular, non-PostScript, print jobs to the printer.*

**PPD file:**

Contains information regarding your printer. Select the Setup button in the Chooser, and the PPD file is automatically selected for your printer. This file is installed in the Printer Description file of the Extension folder.

**Printer Fonts:**

Includes the fonts that can be printed by StylusRIP. The following standard printer font are installed in the StylusRIP folder in the host computer.

**Screen Fonts:**

These fonts are displayed on screen. This font file is installed in the Font folder of the System folder in both host computer and client Macintosh.

**StylusRIP Utility folder:**

This StylusRIP Utility folder installs along with the StylusRIP folder. You can move this folder anywhere. The following utilities are included in this folder:

- PDF file for QuarkXPress:  
This file is needed when printing from QuarkXPress. For details on how to use it, refer to “Not possible to print with QuarkXPress 3.11/3.3” on page 35.
- Other file folders:  
The StylusRIP folder contains miscellaneous files and folders that are necessary for printing with StylusRIP.

**Note:**

*You can move the StylusRIP Utility folder and its contents anywhere on the same hard disk. However you cannot delete or take out the files included in the StylusRIP Utility folder. If you do so, you may not be able to print. Do not add or make new files in the StylusRIP Utility folder other than those automatically made by Installer.*

**Fonts**

This folder contains a minimum set of PostScript fonts.

**ColorSync profile**

This folder contains the self-extracting archives and README file for the ColorSync 2.0 color matching system.

---

# Glossary

## ***CPSI***

Configurable PostScript Interpreter. This Adobe Level 2 PostScript Interpreter runs on a Macintosh server rather than on a hardware peripheral device. StylusRIP uses this interpreter to render a raster image.

## ***FPU***

Floating Point Unit. A chip capable of executing operations with real numbers. The FPU may be built-in (MC 68040 or PPC 601) or available as an add-on to the main CPU (MC 68881).

## ***ICC***

International Color Consortium. A consortium of operating-system vendors that has agreed to a standard color matching system for device profiles.

## ***imaging device***

A device capable of printing a raster image on a physical medium, for example, a printer, imagesetter, or digital film recorder.

## ***interpreter***

A set of software functions that convert PostScript language commands into a raster image. StylusRIP uses the CPSI interpreter.

## ***LaserWriter driver***

An Apple printer driver used by an application to create a PostScript file describing the visible contents of a document.

## ***OPI***

Open Prepress Interface. A set of PostScript language comments for defining and specifying the placement of images.

## ***Post-print queue***

A list in the StylusRIP Completed Jobs window containing all jobs already printed for all open StylusRIP printers.

## ***PostScript***

An interpretive computer language developed by Adobe that describes the text, graphics, and image content of a document to a printer or other output device. PostScript is hardware, software, and network independent so your images always appear the way you want them to.

## ***Printer Connection dialog box***

A dialog box in which you select options for a StylusRIP printer.



***AdobePS driver***

A printer driver used by an application to create a PostScript file. This driver is distributed with StylusRIP and may be installed as a substitute for a LaserWriter driver. Within this manual, all references to LaserWriter should be interpreted as references to either LaserWriter or AdobePS.

***raster image***

A digital representation of an image, consisting of values that are assigned to, and represent, each dot in an image.

***render***

The process by which PostScript language commands are interpreted and a raster image is produced.

***RIP***

Raster Image Processor. An application or device that translates PostScript language-based data into dots that can be printed.

***StylusRIP client***

A Macintosh computer that is connected to the network and contains the StylusRIP software. Users can print from applications in a client Macintosh to printers or imaging devices connected to a StylusRIP server.

***StylusRIP server***

A Macintosh computer running the StylusRIP server application.

***TIFF***

Tagged Image File Format. A standard image file format consisting of labeled fields.

---

# Index

## A

AppleTalk, 6, 17

## C

Cancelling

    print job, 28

Client, 6, 7

Color Matching, 16

ColorSync, 16

Conection, 19

Custom installation, 15

## D

Data Size, 19

## E

Easy installation, 13–14

EtherTalk, 6, 8

## I

Ink, 27

Installing on

    custom, 15

    easy, 13–14

    StylusRIP, 9–16

## J

Job Priority, 21

## L

LocalTalk, 6, 7

## M

Message, 20

## N

Network environment, 21

Network Name, 21

## P

Page, 19

PANTONE, 16

PostScript, 5

Preferences, 21

Printer, 19

Print job

    cancelling, 28

Print server, 5–8

Progress, 20

## Q

Quality, 19, 27

## R

Raster Spool Mode, 22

Remote Only, 11

## S

Serial cable, 7

Server installation

    custom, 15

    easy, 13–14

Standalone, 11

Status, 20

StylusRIP

    installing, 9–16

StylusRIP Monitor, 28

System requirements, 9

## T

Timeout, 21



<b>EPSON OVERSEAS MARKETING LOCATIONS</b>
---

---

**EPSON AMERICA, INC.**

20770 Madrona Ave.  
P.O. Box 2842  
Torrance, CA 90509-2842  
Phone: (800) 922-8911  
Fax: (310) 782-5220

**EPSON UK LTD.**

Campus 100, Maylands Avenue,  
Hemel Hempstead, Herts,  
HP2 7TJ, U.K.  
Phone: (+44) 01442 261144  
Fax: (+44) 01442 227227

---

**EPSON DEUTSCHLAND GmbH**

Zülpicher Straße 6,  
40549 Düsseldorf Germany  
Phone: (0211) 56030  
Fax: (0211) 5047787

**EPSON FRANCE S.A.**

68 bis, rue Marjolin  
92300, Levallois-Perret, France  
Phone: 33.1.40.87.37.37  
Telex: 610657

---

**EPSON AUSTRALIA PTY. LTD.**

70 GIBBES STREET, CHATSWOOD 2067 NSW.  
Phone: 2-9903-9000  
Fax: 2-9903-9177

**EPSON SINGAPORE PTE. LTD.**

No. 1 Temasek Avenue #36-00  
Millenia Tower, Singapore 039192  
Phone: (065) 33 77 911  
Fax: (065) 33 41 185

---

**EPSON HONG KONG LTD.**

Rooms 4706-10, 47/F,  
China Resources Bldg.,  
26 Harbour Road, Wanchai, Hong Kong  
Phone: 2585-4300  
Fax: 2827-7083

**EPSON TAIWAN TECHNOLOGY & TRADING LTD.**

10F, No. 287 Nanking E. Road, Sec. 3,  
Taipei, Taiwan, R.O.C.  
Phone: (02) 717-7360  
Fax: (02) 712-9164

---

**EPSON ITALIA S.p.A.**

V.le F.lli Casiraghi 427  
20099 Sesto S.Giovanni  
MI, Italy  
Phone: 2-262331  
Fax: 2-2440750

**EPSON IBERICA S.A.**

Av. de Roma, 18-26  
08290 Cerdanyola del Valles  
Barcelona, Spain  
Phone: 582. 15.00  
Fax: 582. 15.55

---

**SEIKO EPSON CORPORATION  
(Hirooka Office)**

80 Harashinden, Hirooka  
Shiojiri-shi, Nagano-ken  
399-0785 Japan

**EPSON PORTUGAL, S.A.**

R. do Progresso, 471, 1° Perafita  
4460 Matosinhos, Portugal  
Phone: (02) 996 14 02  
Fax: (02) 996 14 11